



# Poultry Slaughter

---

Released June 6, 2003, by the National Agricultural Statistics Service (NASS), Agricultural Statistics Board, U.S. Department of Agriculture. For information on "Poultry Slaughter" call John Lange at 202-720-0585, office hours 7:00 a.m. to 4:30 p.m. ET.

## Ready-to-Cook Weight Down 2 Percent

Poultry certified wholesome during April 2003 (ready-to-cook weight) totaled 3.25 billion pounds, down 2 percent from the amount certified in April 2002. Updated totals for March 2003 show that 3.10 billion pounds were certified.

The preliminary total live weight of poultry inspected during April 2003 was 4.37 billion pounds, down 2 percent from a year ago. Young chickens inspected totaled 3.68 billion pounds, down 1 percent from April 2002, and mature chickens at 73.3 million pounds, were down 8 percent from the previous year. Turkey inspections totaled 600 million pounds, down 4 percent, and ducks totaled 13.5 million pounds, up 3 percent.

Young chickens slaughtered during April 2003 averaged 5.18 pounds per bird, up 2 percent from April 2002. The average live weight of mature chickens was 5.25 pounds per bird, up 3 percent from a year ago. Turkeys slaughtered during April 2003 averaged 27.2 pounds per bird, up slightly from April 2002.

Ante-mortem condemnations during April 2003 totaled 16.4 million pounds. Condemnations were 0.38 percent of the live weight inspected, compared to 0.37 percent a year earlier. Post-mortem condemnations, at 47.2 million pounds (N.Y. dressed weight), were 1.20 percent of quantities inspected, compared with 1.28 percent a year earlier.

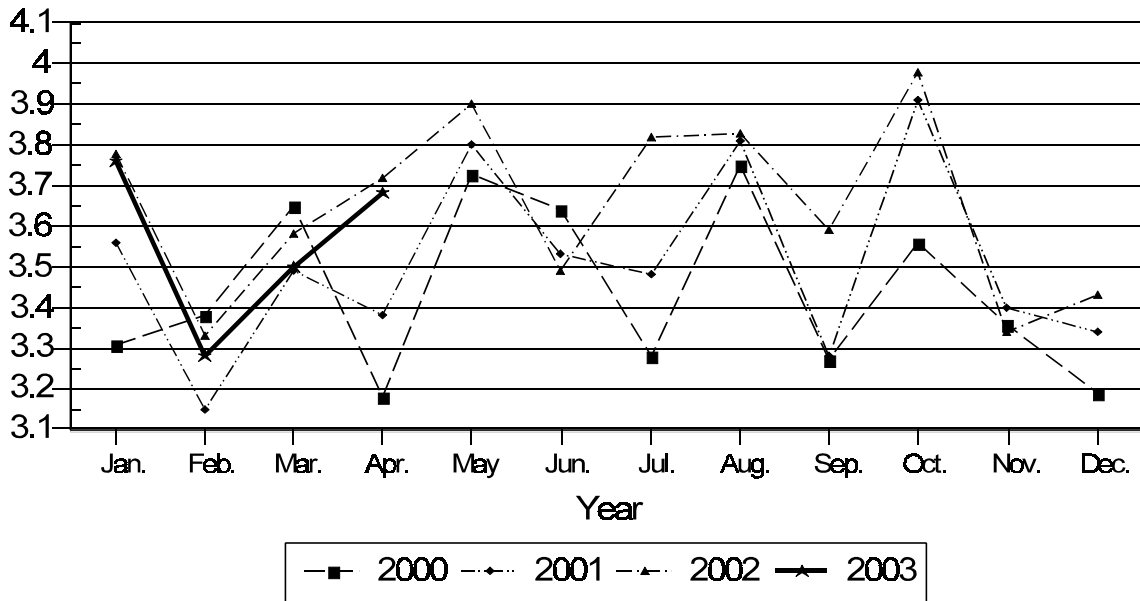
April 2003 contained 22 weekdays and four Saturdays. The same as April 2002.

## Contents

	<b>Page</b>
Poultry Slaughter: Number, Live Weight, and Average Live Weight by Type, United States, April 2003 .....	4
Poultry Slaughter: Chilled and Frozen, Pounds Certified by Type, United States, April 2003 .....	6
Poultry Slaughter: Ante-Mortem Condemnations by Type, United States, April 2003 .....	8
Poultry Slaughter: Post-Mortem Condemnations by Type, United States, April 2003 .....	9
Young Chickens Slaughtered: Number, Live Weight, and Average Live Weight, by State and United States, April 2003 .....	10
Young Chickens Slaughtered: Pounds Certified and Post-Mortem Condemnations, by State and United States, April 2003 .....	11
Young Chickens Slaughtered: Number Condemned Post-Mortem by Cause, by Type, by State and United States, March 2003 .....	12
Young Chickens Slaughtered: Number Condemned Post-Mortem by Cause, by Type, by State and United States, April 2003 .....	14
Young Turkeys (Mature) Slaughtered: Number, Live Weight, and Average Live Weight, by State and United States, April 2003 .....	16
Young Turkeys (Mature) Slaughtered: Pounds Certified and Post-Mortem Condemnations, by State and United States, April 2003 .....	16
Young Turkeys Slaughtered: Number Condemned Post-Mortem by Cause, by Type, by State and United States, March 2003 .....	17
Young Turkeys Slaughtered: Number Condemned Post-Mortem by Cause, by Type, by State and United States, April 2003 .....	18
Reliability Statement .....	19
Definitions .....	20

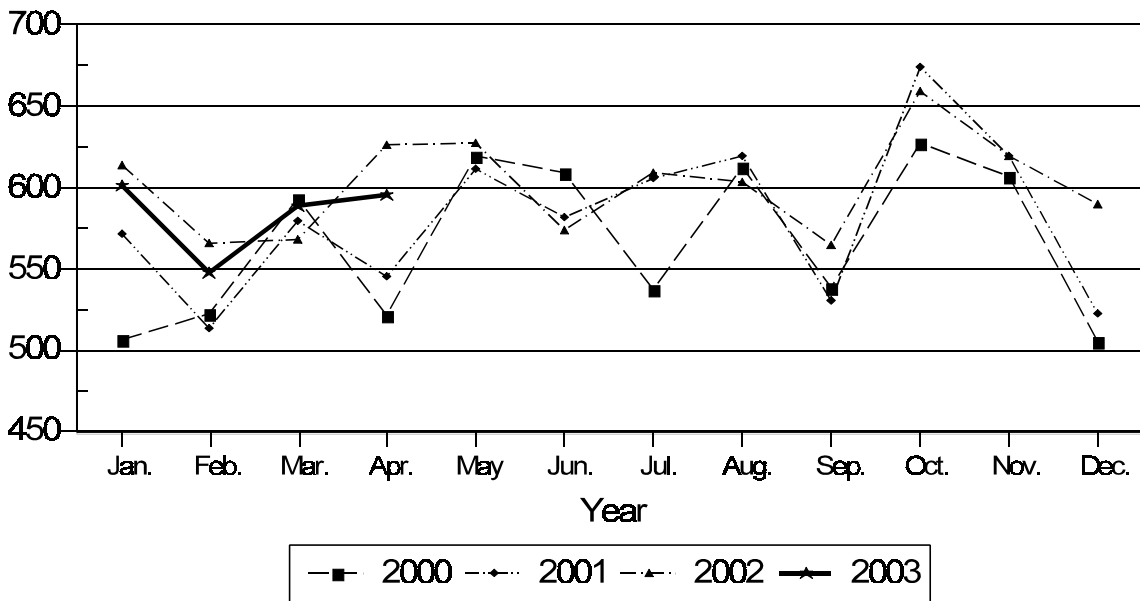
# Young Chickens: Live Weight Slaughtered, by Month, 2000-2003

Billion Pounds



# Young Turkeys: Live Weight Slaughtered, by Month, 2000-2003

Million Pounds



**Poultry Slaughter: Number, Live Weight, and Average Live Weight by Type,  
United States, April 2003 <sup>1</sup>**

Commodity	Apr 2002	Mar 2003	Apr 2003	Percent of	
				Apr 2002	Mar 2003
	<i>1,000 Head</i>	<i>1,000 Head</i>	<i>1,000 Head</i>	<i>Percent</i>	<i>Percent</i>
Number Slaughtered					
Chickens					
Young	733,131	681,866	710,657	97	104
Mature	15,488	12,559	13,955	90	111
Light	9,630	6,963	8,334	87	120
Heavy	5,858	5,596	5,621	96	100
Total	748,619	694,425	724,612	97	104
Turkeys					
Young	22,944	21,458	21,908	95	102
Old	233	189	171	73	90
Total	23,177	21,647	22,079	95	102
Ducks	1,948	1,964	2,023	104	103
	<i>1,000 pounds</i>	<i>1,000 pounds</i>	<i>1,000 pounds</i>	<i>Percent</i>	<i>Percent</i>
Live Weight					
Chickens					
Young	3,727,960	3,497,276	3,679,394	99	105
Mature	79,289	67,748	73,303	92	108
Light	32,995	23,584	28,539	86	121
Heavy	46,294	44,164	44,764	97	101
Total	3,807,249	3,565,024	3,752,697	99	105
Turkeys					
Young	621,454	588,777	595,677	96	101
Old	6,450	5,217	4,559	71	87
Total	627,904	593,994	600,236	96	101
Ducks	13,058	12,860	13,493	103	105
Other Poultry	873	775	843	97	109
Total Poultry	4,449,084	4,172,653	4,367,269	98	105
	<i>Pounds</i>	<i>Pounds</i>	<i>Pounds</i>	<i>Percent</i>	<i>Percent</i>
Average Live Weight					
Chickens					
Young	5.08	5.13	5.18	102	101
Mature	5.12	5.39	5.25	103	97
Light	3.43	3.39	3.42	100	101
Heavy	7.90	7.89	7.97	101	101
Total	5.09	5.13	5.18	102	101
Turkeys					
Young	27.09	27.44	27.19	100	99
Old	27.69	27.55	26.58	96	96
Total	27.09	27.44	27.19	100	99
Ducks	6.70	6.55	6.67	100	102

See footnote(s) at end of table.

--continued

**Poultry Slaughter: Number, Live Weight, and Average Live Weight by Type,  
United States, April 2003 <sup>1</sup> (continued)**

Commodity	January to Date			Percent of	
	2001	2002	2003	2001	2002
	<i>1,000 Head</i>	<i>1,000 Head</i>	<i>1,000 Head</i>	<i>Percent</i>	<i>Percent</i>
Number Slaughtered					
Chickens					
Young	2,714,698	2,815,179	2,749,833	101	98
Mature	54,076	58,519	53,077	98	91
Light	31,977	36,009	30,336	95	84
Heavy	22,099	22,510	22,741	103	101
Total	2,768,774	2,873,698	2,802,910	101	98
Turkeys					
Young	82,196	85,734	84,683	103	99
Old	638	759	857	134	113
Total	82,834	86,493	85,540	103	99
Ducks	8,703	7,996	8,114	93	101
	<i>1,000 pounds</i>	<i>1,000 pounds</i>	<i>1,000 pounds</i>	<i>Percent</i>	<i>Percent</i>
Live Weight					
Chickens					
Young	13,644,701	14,357,656	14,216,461	104	99
Mature	281,754	299,366	281,627	100	94
Light	109,678	122,705	102,822	94	84
Heavy	172,076	176,661	178,805	104	101
Total	13,926,455	14,657,022	14,498,088	104	99
Turkeys					
Young	2,215,643	2,358,907	2,327,807	105	99
Old	17,194	21,251	23,367	136	110
Total	2,232,837	2,380,158	2,351,174	105	99
Ducks	57,516	54,048	53,538	93	99
Other Poultry	3,131	2,958	3,192	102	108
Total Poultry	16,219,939	17,094,186	16,905,992	104	99
	<i>Pounds</i>	<i>Pounds</i>	<i>Pounds</i>	<i>Percent</i>	<i>Percent</i>
Average Live Weight					
Chickens					
Young	5.03	5.10	5.17	103	101
Mature	5.21	5.12	5.31	102	104
Light	3.43	3.41	3.39	99	99
Heavy	7.79	7.85	7.86	101	100
Total	5.03	5.10	5.17	103	101
Turkeys					
Young	26.96	27.51	27.49	102	100
Old	26.96	28.01	27.27	101	97
Total	26.96	27.52	27.49	102	100
Ducks	6.61	6.76	6.60	100	98

<sup>1</sup> Federally inspected only.

**Poultry Slaughter: Chilled and Frozen, Pounds Certified by Type,  
United States, April 2003 <sup>1</sup>**

Commodity	Apr 2002	Mar 2003	Apr 2003	Percent of	
				Apr 2002	Mar 2003
	<i>1,000 Pounds</i>	<i>1,000 Pounds</i>	<i>1,000 Pounds</i>	<i>Percent</i>	<i>Percent</i>
Chilled					
Chickens					
Young	2,506,186	2,339,270	2,449,335	98	105
Mature	45,785	40,184	41,957	92	104
Light	15,669	11,221	12,803	82	114
Heavy	30,116	28,963	29,154	97	101
Total	2,551,971	2,379,454	2,491,292	98	105
Turkeys					
Young	230,577	245,660	247,817	107	101
Old	4,284	3,410	2,886	67	85
Total	234,861	249,070	250,703	107	101
Ducks	3,365	2,971	3,438	102	116
Other Poultry	254	161	181	71	112
Total Poultry	2,790,451	2,631,656	2,745,614	98	104
Frozen					
Chickens					
Young	245,611	246,509	272,275	111	110
Mature	1,556	952	1,639	105	172
Light	1,350	781	1,411	105	181
Heavy	206	171	228	111	133
Total	247,167	247,461	273,914	111	111
Turkeys					
Young	255,814	218,913	223,121	87	102
Old	623	417	413	66	99
Total	256,437	219,330	223,534	87	102
Ducks	6,130	5,994	6,304	103	105
Other Poultry	291	295	329	113	112
Total Poultry	510,025	473,080	504,081	99	107
Total Chilled and Frozen					
Chickens					
Young	2,751,797	2,585,779	2,721,610	99	105
Mature	47,341	41,136	43,596	92	106
Light	17,019	12,002	14,214	84	118
Heavy	30,322	29,134	29,382	97	101
Total	2,799,138	2,626,915	2,765,206	99	105
Turkeys					
Young	486,391	464,573	470,938	97	101
Old	4,907	3,827	3,299	67	86
Total	491,298	468,400	474,237	97	101
Ducks	9,495	8,965	9,742	103	109
Other Poultry	545	456	510	94	112
Total Poultry	3,300,476	3,104,736	3,249,695	98	105

See footnote(s) at end of table.

--continued

**Poultry Slaughter: Chilled and Frozen, Pounds Certified by Type,  
United States, April 2003 <sup>1</sup> (continued)**

Commodity	January to Date			Percent of	
	2001	2002	2003	2001	2002
	<i>1,000 Pounds</i>	<i>1,000 Pounds</i>	<i>1,000 Pounds</i>	<i>Percent</i>	<i>Percent</i>
<b>Chilled</b>					
Chickens					
Young	9,162,632	9,629,917	9,479,207	103	98
Mature	165,337	173,408	165,024	100	95
Light	53,210	58,647	48,469	91	83
Heavy	112,127	114,761	116,555	104	102
Total	9,327,969	9,803,325	9,644,231	103	98
Turkeys					
Young	869,296	903,956	967,231	111	107
Old	11,005	13,484	14,953	136	111
Total	880,301	917,440	982,184	112	107
Ducks	16,011	14,909	13,173	82	88
Other Poultry	754	822	697	92	85
<b>Total Poultry</b>	<b>10,225,035</b>	<b>10,736,496</b>	<b>10,640,285</b>	<b>104</b>	<b>99</b>
<b>Frozen</b>					
Chickens					
Young	886,023	940,425	1,012,877	114	108
Mature	3,656	5,535	4,312	118	78
Light	3,003	4,730	3,484	116	74
Heavy	653	805	828	127	103
Total	889,679	945,960	1,017,189	114	108
Turkeys					
Young	878,802	949,346	868,958	99	92
Old	2,191	2,629	2,093	96	80
Total	880,993	951,975	871,051	99	91
Ducks	25,561	25,564	25,054	98	98
Other Poultry	1,068	1,012	1,237	116	122
<b>Total Poultry</b>	<b>1,797,301</b>	<b>1,924,511</b>	<b>1,914,531</b>	<b>107</b>	<b>99</b>
<b>Total Chilled and Frozen</b>					
Chickens					
Young	10,048,655	10,570,342	10,492,084	104	99
Mature	168,993	178,943	169,336	100	95
Light	56,213	63,377	51,953	92	82
Heavy	112,780	115,566	117,383	104	102
Total	10,217,648	10,749,285	10,661,420	104	99
Turkeys					
Young	1,748,098	1,853,302	1,836,189	105	99
Old	13,196	16,113	17,046	129	106
Total	1,761,294	1,869,415	1,853,235	105	99
Ducks	41,572	40,473	38,227	92	94
Other Poultry	1,822	1,834	1,934	106	105
<b>Total Poultry</b>	<b>12,022,336</b>	<b>12,661,007</b>	<b>12,554,816</b>	<b>104</b>	<b>99</b>

<sup>1</sup> Ready-to-cook weights.

**Poultry Slaughter: Ante-Mortem Condemnations by Type,  
United States, April 2003 <sup>1</sup>**

Commodity	Apr 2002	Mar 2003	Apr 2003	Percent of		January to Date		Percent of 2002
				Apr 2002	Mar 2003	2002	2003	
				<i>1,000 Pounds</i>	<i>1,000 Pounds</i>			
Live Weight				<i>Percent</i>	<i>Percent</i>			<i>Percent</i>
Chickens								
Young	13,192	13,038	13,319	101	102	59,526	58,898	99
Mature	1,433	856	1,087	76	127	5,085	4,155	82
Light	766	508	614	80	121	2,349	2,320	99
Heavy	667	348	473	71	136	2,736	1,835	67
Total	14,625	13,894	14,406	99	104	64,611	63,053	98
Turkeys								
Young	1,772	3,079	1,859	105	60	6,993	9,132	131
Old	70	108	84	120	78	227	575	253
Total	1,842	3,187	1,943	105	61	7,220	9,707	134
Ducks	17	21	34	200	162	155	113	73
Other Poultry	5	2	2	40	100	11	10	91
Total Poultry	16,489	17,104	16,385	99	96	71,997	72,883	101
	<i>Percent</i>	<i>Percent</i>	<i>Percent</i>	<i>Percent</i>	<i>Percent</i>	<i>Percent</i>	<i>Percent</i>	<i>Percent</i>
Percent of Total Weight Condemned <sup>2</sup>								
Chickens								
Young	0.35	0.37	0.36	103	97	0.41	0.41	100
Mature	1.81	1.26	1.48	82	117	1.70	1.48	87
Light	2.32	2.15	2.15	93	100	1.91	2.26	118
Heavy	1.44	0.79	1.06	74	134	1.55	1.03	66
Total	0.38	0.39	0.38	100	97	0.44	0.43	98
Turkeys								
Young	0.28	0.52	0.31	111	60	0.30	0.39	130
Old	1.09	2.11	1.83	168	87	1.07	2.46	230
Total	0.29	0.54	0.32	110	59	0.30	0.41	137
Ducks	0.13	0.16	0.25	192	156	0.28	0.21	75
Other Poultry	0.61	0.34	0.23	38	68	0.39	0.31	79
Total Poultry	0.37	0.41	0.38	103	93	0.42	0.43	102

<sup>1</sup> Federally inspected only.

<sup>2</sup> Pounds condemned as a percent of live weight pounds inspected.



**Poultry Slaughter: Post-Mortem Condemnations by Type,  
United States, April 2003 <sup>1</sup>**

Commodity	Apr 2002	Mar 2003	Apr 2003	Percent of		January to Date		Percent of 2002
				Apr 2002	Mar 2003	2002	2003	
	<i>1,000 Pounds</i>	<i>1,000 Pounds</i>	<i>1,000 Pounds</i>	<i>Percent</i>	<i>Percent</i>	<i>1,000 Pounds</i>	<i>1,000 Pounds</i>	<i>Percent</i>
N.Y. Dressed Weight								
Chickens								
Young	35,326	31,326	31,003	88	99	141,214	125,978	89
Mature	3,917	3,593	4,429	113	123	15,027	16,278	108
Light	2,178	2,011	2,620	120	130	8,514	9,179	108
Heavy	1,739	1,582	1,809	104	114	6,513	7,099	109
Total	39,243	34,919	35,432	90	101	156,241	142,256	91
Turkeys								
Young	11,385	11,221	11,093	97	99	43,847	42,910	98
Old	425	438	363	85	83	1,462	1,762	121
Total	11,810	11,659	11,456	97	98	45,309	44,672	99
Ducks	244	274	316	130	115	995	1,147	115
Other Poultry	11	17	17	155	100	35	58	166
Total Poultry	51,308	46,869	47,221	92	101	202,580	188,133	93
	<i>Percent</i>	<i>Percent</i>	<i>Percent</i>	<i>Percent</i>	<i>Percent</i>	<i>Percent</i>	<i>Percent</i>	<i>Percent</i>
Percent of Total Weight Condemned <sup>2</sup>								
Chickens								
Young	1.05	1.00	0.94	90	94	1.09	0.98	90
Mature	5.49	5.89	6.71	122	114	5.58	6.42	115
Light	7.33	9.47	10.20	139	108	7.71	9.92	129
Heavy	4.17	3.98	4.49	108	113	4.10	4.41	108
Total	1.15	1.09	1.05	91	96	1.18	1.09	92
Turkeys								
Young	2.04	2.12	2.07	101	98	2.07	2.05	99
Old	7.33	9.35	8.85	121	95	7.65	8.38	110
Total	2.09	2.18	2.12	101	97	2.12	2.11	100
Ducks	2.08	2.37	2.60	125	110	2.05	2.38	116
Other Poultry	1.35	2.61	2.27	168	87	1.35	2.02	150
Total Poultry	1.28	1.25	1.20	94	96	1.32	1.24	94

<sup>1</sup> Federally inspected only.

<sup>2</sup> Pounds condemned as a percent of N.Y. dressed weight of quantity inspected.

**Young Chickens Slaughtered: Number, Live Weight, and Average Live Weight,  
by State and United States, April 2003**

State	Number Slaughtered		Live Weight		Average Live Weight	
	March	April	March	April	March	April
	<i>1,000 Head</i>	<i>1,000 Head</i>	<i>1,000 Pounds</i>	<i>1,000 Pounds</i>	<i>Pounds</i>	<i>Pounds</i>
AL	81,066	84,289	413,618	431,334	5.10	5.12
AR	92,029	98,738	452,542	494,012	4.92	5.00
CA	*	*	*	*	*	*
DE	21,504	21,768	128,485	130,953	5.97	6.02
FL	9,648	9,835	54,677	54,173	5.67	5.51
GA	98,248	102,635	486,910	513,359	4.96	5.00
KY	20,482	21,609	107,770	114,627	5.26	5.30
LA	15,634	15,616	80,280	81,179	5.13	5.20
MD	15,763	16,264	74,590	78,012	4.73	4.80
MS	58,510	60,746	311,300	322,439	5.32	5.31
MO	29,950	29,991	136,081	141,462	4.54	4.72
NJ	*	*	*	*	*	*
NY	*	*	*	*	*	*
NC	54,353	54,883	323,604	333,739	5.95	6.08
OH	3,006	3,257	17,524	19,375	5.83	5.95
PA	8,460	8,413	44,008	44,145	5.20	5.25
SC	20,101	20,739	115,662	115,848	5.75	5.59
TN	17,076	18,395	87,021	93,862	5.10	5.10
TX	51,806	54,638	254,540	275,626	4.91	5.04
VA	26,690	28,280	129,689	139,009	4.86	4.92
WA	*	*	*	*	*	*
Oth Sts	57,540	60,561	278,975	296,240	4.85	4.89
US	681,866	710,657	3,497,276	3,679,394	5.13	5.18

\* Included in "Other States" to avoid disclosing individual operations.

**Young Chickens Slaughtered: Pounds Certified and Post-Mortem Condemnations  
by State and United States, April 2003**

State	Total Chilled and Frozen Pounds Certified <sup>1</sup>		Post-Mortem Condemnations			
			N.Y. Dressed Weight		Percent <sup>2</sup>	
	March	April	March	April	March	April
	<i>1,000 Pounds</i>	<i>1,000 Pounds</i>	<i>1,000 Pounds</i>	<i>1,000 Pounds</i>	<i>Percent</i>	<i>Percent</i>
AL	301,857	316,127	3,428	3,550	0.92	0.91
AR	327,262	357,325	4,264	4,728	1.05	1.06
CA	*	*	*	*	*	*
DE	93,901	94,793	1,985	2,047	1.72	1.74
FL	37,899	38,252	590	597	1.20	1.23
GA	355,216	380,075	3,286	3,116	0.75	0.67
KY	77,279	83,601	741	777	0.76	0.75
LA	59,146	58,564	433	411	0.60	0.56
MD	52,732	55,915	1,030	1,222	1.53	1.74
MS	236,266	239,127	2,303	2,472	0.82	0.85
MO	99,395	103,500	1,338	1,227	1.09	0.96
NJ	*	*	*	*	*	*
NY	*	*	*	*	*	*
NC	255,123	262,371	3,948	3,173	1.36	1.06
OH	12,336	13,918	347	306	2.20	1.75
PA	31,212	31,182	791	701	2.00	1.76
SC	84,905	84,178	625	725	0.60	0.70
TN	63,022	68,985	1,153	667	1.47	0.79
TX	197,973	211,860	1,910	2,041	0.83	0.82
VA	93,149	101,887	1,118	1,173	0.96	0.94
WA	*	*	*	*	*	*
Oth Sts	207,106	219,950	2,036	2,070	0.81	0.78
US	2,585,779	2,721,610	31,326	31,003	1.00	0.94

\* Included in "Other States" to avoid disclosing individual operations.

<sup>1</sup> Ready-to-cook weights.

<sup>2</sup> Pounds condemned as percent of equivalent N.Y. dressed weight of quantity inspected.

**Chickens Slaughtered: Number Condemned Post-Mortem by Cause, by Type,  
by State and United States, March 2003**

State	Tuber- culosis	Leukosis	Septicemia	Airsac- culitis	Synovitis	Tumors
	<i>Number of Head</i>	<i>Number of Head</i>	<i>Number of Head</i>	<i>Number of Head</i>	<i>Number of Head</i>	<i>Number of Head</i>
Young Birds						
AL		*	108,245	54,103	1,374	*
AR		3,842	208,334	122,858	4,006	2,867
CA		1,388	*	3,994	300	944
DE		6,311	92,247	42,660	*	*
FL		104	*	*	*	*
GA		371	86,412	80,975	226	5,550
IN		16	6,825	*	*	127
KY		*	31,023	16,825	65	*
LA		*	15,496	10,302	128	264
MD		4,384	62,649	36,220	*	*
MS		224	66,328	38,356	435	1,090
MO		1,101	105,194	*	652	*
NJ		*	*	*	*	*
NY		249	*	*	*	*
NC		631	93,334	57,347	*	*
OH		*	20,918	*	*	*
PA		255	21,702	18,064	228	511
SC		*	17,069	13,811	14	944
TN		*	44,605	12,830	216	*
TX		*	136,763	57,263	486	2,378
VA		*	49,928	23,905	*	*
WA		*	*	*	*	*
Oth Sts		3,158	178,696	108,415	2,338	57,895
US		22,098	1,345,768	697,928	10,468	72,570
Mature Birds						
Light		2,236	171,466	14,330	194	72,586
Heavy		999	72,641	3,516	201	9,533
US		3,235	244,107	17,846	395	82,119

See footnote(s) at end of table.

--continued

**Chickens Slaughtered: Number Condemned Post-Mortem by Cause, by Type,  
by State and United States, March 2003 (continued)**

	Bruises	Cadaver	Contam-ination	Overscald	Other	Total <sup>1</sup>
	<i>Number of Head</i>	<i>Number of Head</i>	<i>Number of Head</i>	<i>Number of Head</i>	<i>Number of Head</i>	<i>Number of Head</i>
Young Birds						
AL	4,307	22,480	21,218	7,550	86,024	311,162
AR	7,081	18,483	27,591	2,787	47,261	445,110
CA	231	*	1,777	*	3,459	*
DE	2,369	12,146	11,010	*	24,569	205,501
FL	*	3,405	*	495	13,958	52,344
GA	3,528	32,598	20,827	3,494	83,888	317,869
IN	64	*	*	*	*	13,713
KY	187	8,164	*	*	*	72,732
LA	338	2,957	2,461	*	2,364	35,383
MD	1,956	19,182	*	2,671	20,225	178,729
MS	2,980	10,296	8,938	431	56,658	185,736
MO	1,116	11,481	11,384	1,042	34,518	249,361
NJ	*	*	*	*	*	*
NY	*	*	2,643	*	*	*
NC	3,469	19,553	17,983	5,612	57,479	275,197
OH	*	*	*	*	*	37,793
PA	1,101	*	4,616	99	*	67,272
SC	*	4,267	1,888	4,098	5,364	48,627
TN	896	7,407	3,700	*	*	89,166
TX	1,130	7,334	9,768	*	17,469	233,477
VA	1,392	10,297	*	*	17,012	126,214
WA	*	*	*	*	*	*
Oth Sts	5,845	16,799	80,231	14,535	78,121	265,503
US	37,990	206,849	226,035	42,814	548,369	3,210,889
Mature Birds						
Light	14,797	26,040	154,823	1,006	127,285	584,763
Heavy	1,946	14,662	23,131	1,746	66,056	194,431
US	16,743	40,702	177,954	2,752	193,341	779,194

\* Included in "Other States" to avoid disclosing individual operations.

<sup>1</sup> The sum of the individual diseases does not add across to the total for "Other States".

**Chickens Slaughtered: Number Condemned Post-Mortem by Cause, by Type,  
by State and United States, April 2003**

State	Tuber- culosis	Leukosis	Septicemia	Airsac- culitis	Synovitis	Tumors
	<i>Number of Head</i>	<i>Number of Head</i>	<i>Number of Head</i>	<i>Number of Head</i>	<i>Number of Head</i>	<i>Number of Head</i>
Young Birds						
AL		565	111,733	45,032	*	*
AR		2,974	195,988	99,962	4,022	3,357
CA		*	*	4,567	497	911
DE		*	97,970	35,240	91	*
FL		143	*	*	*	*
GA		639	82,436	53,017	299	4,836
IN		*	5,868	*	*	122
KY		84	34,116	14,910	50	*
LA		*	14,422	8,455	127	258
MD		4,181	65,322	36,547	*	6,230
MS		338	64,858	40,549	431	961
MO		1,094	98,793	*	672	*
NJ		*	*	*	*	*
NY		175	*	*	124	*
NC		761	89,094	46,789	*	*
OH		*	19,848	*	*	*
PA		*	19,169	13,947	159	383
SC		57	17,395	12,263	*	1,042
TN		*	45,963	10,185	143	727
TX		*	131,801	41,407	731	2,435
VA		388	56,592	21,746	22	*
WA		*	*	*	*	*
Oth Sts		9,824	186,642	74,505	4,510	44,253
US		21,223	1,338,010	559,121	11,878	65,515
Mature Birds						
Light		2,577	217,355	19,099	408	96,778
Heavy		733	72,163	4,869	1,100	8,371
US		3,310	289,518	23,968	1,508	105,149

See footnote(s) at end of table.

--continued

**Chickens Slaughtered: Number Condemned Post-Mortem by Cause, by Type,  
by State and United States, April 2003 (continued)**

	Bruises	Cadaver	Contam-ination	Overscald	Other	Total <sup>1</sup>
	<i>Number of Head</i>	<i>Number of Head</i>	<i>Number of Head</i>	<i>Number of Head</i>	<i>Number of Head</i>	<i>Number of Head</i>
Young Birds						
AL	4,470	24,116	28,731	5,536	85,579	313,105
AR	6,984	18,425	30,266	3,399	49,905	415,282
CA	489	*	2,030	*	4,909	*
DE	2,337	17,884	11,429	*	34,360	219,175
FL	*	2,902	3,069	532	13,658	51,664
GA	3,945	31,274	17,763	6,354	71,683	272,246
IN	92	*	*	7	*	*
KY	165	10,311	*	738	*	80,054
LA	324	2,750	*	*	*	34,181
MD	1,913	18,220	*	*	22,627	179,461
MS	2,977	12,659	9,470	777	62,423	195,443
MO	1,144	12,026	9,648	285	37,726	210,770
NJ	*	*	*	*	*	*
NY	*	*	2,931	*	*	*
NC	4,025	23,392	17,370	5,577	70,053	272,178
OH	142	*	*	*	*	32,803
PA	1,073	2,362	*	72	12,172	54,269
SC	*	4,632	1,930	1,941	4,900	45,266
TN	904	9,166	3,921	368	*	91,560
TX	1,021	8,599	7,398	*	17,260	212,552
VA	1,479	11,517	*	*	14,800	129,239
WA	*	*	*	*	*	*
Oth Sts	5,115	14,630	73,178	16,200	72,465	285,403
US	38,599	224,865	219,134	41,786	574,520	3,094,651
Mature Birds						
Light	22,602	25,311	178,521	2,912	87,814	653,377
Heavy	1,531	18,382	24,710	1,241	58,888	191,988
US	24,133	43,693	203,231	4,153	146,702	845,365

\* Included in "Other States" to avoid disclosing individual operations.

<sup>1</sup> The sum of the individual diseases does not add across to the total for "Other States".

**Young Turkeys (Mature) Slaughtered: Number, Live Weight, and Average Live Weight, by State and United States, April 2003**

State	Number Slaughtered		Live Weight		Average Live Weight	
	March	April	March	April	March	April
	<i>1,000 Head</i>	<i>1,000 Head</i>	<i>1,000 Pounds</i>	<i>1,000 Pounds</i>	<i>Pounds</i>	<i>Pounds</i>
AR	2,701	3,002	50,220	55,846	18.59	18.60
CA	*	*	*	*	*	*
IA	1,469	1,510	48,507	48,632	33.03	32.21
MN	2,793	3,031	79,542	83,984	28.47	27.71
MO	1,658	1,694	51,298	54,291	30.94	32.05
NC	3,364	3,287	84,596	82,955	25.15	25.24
OH	*	*	*	*	*	*
PA	*	*	*	*	*	*
VA	*	*	*	*	*	*
Oth Sts	9,473	9,384	274,614	269,969	28.99	28.77
US	21,458	21,908	588,777	595,677	27.44	27.19

\* Included in "Other States" to avoid disclosing individual operations.

**Young Turkeys (Mature) Slaughtered: Pounds Certified and Post-Mortem Condemnations, by State and United States, April 2003**

State	Total Chilled and Frozen Pounds Certified <sup>1</sup>		Post-Mortem Condemnations			
			N.Y. Dressed Weight		Percent <sup>2</sup>	
	March	April	March	April	March	April
	<i>1,000 Pounds</i>	<i>1,000 Pounds</i>	<i>1,000 Pounds</i>	<i>1,000 Pounds</i>	<i>Percent</i>	<i>Percent</i>
AR	41,877	46,079	791	833	1.75	1.66
CA	*	*	*	*	*	*
IA	38,107	37,764	1,192	1,646	2.73	3.76
MN	60,921	66,209	1,583	1,802	2.21	2.38
MO	40,025	42,436	1,191	1,168	2.58	2.39
NC	67,585	65,988	1,081	1,016	1.42	1.36
OH	*	*	*	*	*	*
PA	*	*	*	*	*	*
VA	*	*	*	*	*	*
Oth Sts	216,058	212,462	5,383	4,628	2.18	1.90
US	464,573	470,938	11,221	11,093	2.12	2.07

\* Included in "Other States" to avoid disclosing individual operations.

<sup>1</sup> Ready-to-cook weights.

<sup>2</sup> Pounds condemned as percent of equivalent N.Y. dressed weight of quantity inspected.



**Turkeys Slaughtered: Number Condemned Post-Mortem by Cause, by Type,  
by State and United States, March 2003**

State	Tuber- culosis	Leukosis	Septicemia	Airsac- culitis	Synovitis	Tumors
	<i>Number of Head</i>	<i>Number of Head</i>	<i>Number of Head</i>	<i>Number of Head</i>	<i>Number of Head</i>	<i>Number of Head</i>
Young (Mature)						
AR			*	*	*	*
CA		4	*	*	*	5
IA		*	6,635	2,194	*	*
MN		*	16,667	3,103	*	26
MO			17,658	*	*	*
NC		*	*	*	*	*
OH		*	*	*	*	*
PA			*	490	11	*
VA		*	*	*	*	*
Other States	1	349	53,520	9,676	4,664	34
US	1	353	94,480	15,463	4,675	65
Old (Breeders)						
US		9	3,869	1,174	105	98
	<b>Bruises</b>	<b>Cadaver</b>	<b>Contam- ination</b>	<b>Overscald</b>	<b>Other</b>	<b>Total <sup>1</sup></b>
	<i>Number of Head</i>	<i>Number of Head</i>	<i>Number of Head</i>	<i>Number of Head</i>	<i>Number of Head</i>	<i>Number of Head</i>
Young (Mature)						
AR	14	665	*	*	*	*
CA	*	*	*	*	*	*
IA	*	577	535	88	680	12,879
MN	*	645	659	*	1,465	24,254
MO	*	*	407	7	*	21,370
NC	197	*	*	59	1,285	9,864
OH	*	*	*	*	*	*
PA	*	*	*	*	*	*
VA	*	*	*	*	*	*
Other States	735	5,534	3,791	1,837	10,976	76,826
US	946	7,421	5,392	1,991	14,406	145,193
Old (Breeders)						
US	39	310	396	18	1,712	7,730

\* Included in "Other States" to avoid disclosing individual operations.

<sup>1</sup> The sum of the individual diseases does not add across to the total for "Other States".

**Turkeys Slaughtered: Number Condemned Post-Mortem by Cause, by Type,  
by State and United States, April 2003**

State	Tuber- culosis	Leukosis	Septicemia	Airsac- culitis	Synovitis	Tumors
	<i>Number of Head</i>	<i>Number of Head</i>	<i>Number of Head</i>	<i>Number of Head</i>	<i>Number of Head</i>	<i>Number of Head</i>
Young (Mature)						
AR			*	*	*	*
CA		*	*	*	*	*
IA		*	7,468	2,108	*	*
MN		*	18,219	2,370	*	12
MO		*	14,196	*	*	
NC		4	*	*	*	4
OH		*	*	*	*	*
PA		*	*	492	*	*
VA		*	*	*	*	*
Other States		194	46,633	6,898	5,480	39
US		198	86,516	11,868	5,480	55
Old (Breeders)						
US			5,682	1,251	96	250
	<b>Bruises</b>	<b>Cadaver</b>	<b>Contam- ination</b>	<b>Overscald</b>	<b>Other</b>	<b>Total <sup>1</sup></b>
	<i>Number of Head</i>	<i>Number of Head</i>	<i>Number of Head</i>	<i>Number of Head</i>	<i>Number of Head</i>	<i>Number of Head</i>
Young (Mature)						
AR	*	610	*	*	*	*
CA	*	*	90	*	*	*
IA	*	*	479	*	*	14,971
MN	128	607	869	*	1,987	25,594
MO	51	*	*	*	*	18,547
NC	*	1,049	484	*	630	*
OH	*	*	*	*	*	*
PA	*	*	*	*	*	*
VA	*	*	*	*	*	*
Other States	597	4,226	3,198	2,838	12,437	75,285
US	776	6,492	5,120	2,838	15,054	134,397
Old (Breeders)						
US	26	217	321	79	1,616	9,538

\* Included in "Other States" to avoid disclosing individual operations.

<sup>1</sup> The sum of the individual diseases does not add across to the total for "Other States".

## Poultry Slaughter Estimates

**Data Sources:** Primary data for poultry slaughter estimates are obtained from the Poultry Inspection Form (FSIS 6000-21). This form is completed by inspectors of the Food Safety and Inspection Service (FSIS), USDA for all Federally Inspected (FI) plants. Over 99 percent of the total U.S. slaughter for any species is under FI. The FSIS 6000-21 forms collect number of head slaughtered daily under FI by species and class as well as condemnations and total live and dressed weights. Approximately 350 plants in the U.S. are operated under Federal Inspection.

**Revision Policy:** Revisions are generally the result of late reports received by FSIS from plants and are usually less than one-half of 1 percent of the preliminary totals. Revisions for the previous month and year-to-date totals are published in each monthly release. Final data are published in the annual summary released in April and reflect any late reports or corrections which occurred after the monthly revision were published.

**Procedures and Reliability:** Plant inspectors submit forms (FSIS 6000-21) weekly summarizing the plant's activity. When inconsistencies in the data are detected, the reports are returned to the inspectors for correction. Inspectors correct or validate the report and resubmit it. The reports cover weekly activities through Saturday night and reported data are allocated to the appropriate month as it enters the database.

A NASS computer program provides a review of current data with historical data for each plant. An edit provides checks for the detection of errors such as invalid plant information, duplication, and erroneous data. Data are summarized weekly and accumulated to monthly totals for this release.

Data for major slaughter plants with missing reports are adjusted prior to publication to assure that all plants slaughtering a significant portion of a specific class are accounted for each week. Estimates for missing weeks are made only after verifying that the plant was in operation. Adjustments are based on either the previous week's information or a week determined to be similar to the one missing. Late reports replace imputed data as they become available. While there is a varying degree of incompleteness from month to month, it has only a minimal impact on the published totals.

Poultry slaughter estimates are based on a census of operating plants and, therefore, have no sampling error. However, they may be subject to errors such as omissions, duplications, and mistakes in reporting, recording, and processing the data. These errors are minimized through strict quality controls in the edit and summarization process, and a careful review of all reported data for consistency and reasonableness.

State data are published for selected states for young chickens and young turkeys. State data are not published if less than three plants operate for a species in a State, or if one plant has 60 percent or more of the total live weight for that species. Data for all states not published are included in the "Other States" category. Also included in this category are data for published states that are confidential (denoted by an \*). Data for all states are included in the U.S. totals. For 2001, young chickens were killed in 31 states, young turkeys in 21 states.

## Definitions

**Ante-Mortem Condemnations** - Birds condemned prior to their entry into the slaughter plant.

**Certified Ready-to-Cook** - The weight of poultry certified wholesome by inspection after post-mortem condemnation pounds are removed. Ready-to-cook represents poultry meat ready for the marketing channel.

**Ducks** - Includes all ducks regardless of age and weight.

**Fryer-Roaster Turkeys** - Young immature birds, usually under 16 weeks of age. Included with young turkeys.

**Mature Chickens** - Fowl from breeder and market egg flocks and stags and cocks.

**New York Dressed Weight** - Carcass weight after only feathers and blood are removed. This weight is approximately 90% of live weight.

**Old Turkeys (Breeders)** - Fully matured birds held for egg production, usually over 15 months of age.

**Other Poultry** - Includes all other ready-to-cook products which bear the USDA Inspected for Wholesomeness legend.

**Post-Mortem Condemnations** - Carcasses or parts condemned by the inspector because of disease or mishandling and removed from the slaughter line and destroyed.

**Young Chickens** - Commercially grown broilers-fryers and other young immature birds such as roasters and capons.

**Young Turkeys (Mature)** - Young birds grown to a matured market age, about 5 months.

The next "Poultry Slaughter" report will be released at 8:30 a.m. ET on July 7, 2003.

The United States Department of Agriculture (USDA) prohibits discrimination in all its programs on the basis of race, color, national origin, gender, religion, age, disability, political beliefs, sexual orientation, and marital or family status. (Not all prohibited bases apply to all programs.) Persons with disabilities who require alternative means for communication of program information (braille, large print, audiotape, etc.) should contact the USDA's TARGET Center at 202-720-2600 (voice and TDD).

To file a complaint of discrimination, write USDA, Director, Office of Civil Rights, Room 326-W, Whitten Building, 1400 Independence Avenue, SW, Washington, D.C., 20250-9410, or call 202-720-5964 (voice or TDD). USDA is an equal opportunity provider and employer.

## **ACCESS TO REPORTS!!**

---

For your convenience, there are several ways to obtain NASS reports, data products, and services:

### **INTERNET ACCESS**

All NASS reports are available free of charge on the worldwide Internet. For access, connect to the Internet and go to the NASS Home Page at: <http://www.usda.gov/nass/>. Select "Today's Reports" or Publications and then Reports Calendar or Publications and then Search, by Title or Subject.

### **E-MAIL SUBSCRIPTION**

All NASS reports are available by subscription free of charge direct to your e-mail address. Starting with the NASS Home Page at <http://www.usda.gov/nass/>, click on **Publications**, then click on the **Subscribe by E-mail** button which takes you to the page describing e-mail delivery of reports. Finally, click on **Go to the Subscription Page** and follow the instructions.

### **AUTOFAX ACCESS**

NASSFax service is available for some reports from your fax machine. Please call 202-720-2000, using the handset attached to your fax. Respond to the voice prompts. Document 0411 is a list of available reports.

-----  
**PRINTED REPORTS OR DATA PRODUCTS**

**CALL OUR TOLL-FREE ORDER DESK: 800-999-6779 (U.S. and Canada)**  
**Other areas, please call 703-605-6220      FAX: 703-605-6900**  
**(Visa, MasterCard, check, or money order acceptable for payment.)**  
-----

### **ASSISTANCE**

For **assistance** with general agricultural statistics or further information about NASS or its products or services, contact the **Agricultural Statistics Hotline** at **800-727-9540**, 7:30 a.m. to 4:00 p.m. ET, or e-mail: [nass@nass.usda.gov](mailto:nass@nass.usda.gov).

---