



Poultry Slaughter

Released November 7, 2003, by the National Agricultural Statistics Service (NASS), Agricultural Statistics Board, U.S. Department of Agriculture. For information on "Poultry Slaughter" call John Lange at 202-720-0585, office hours 7:00 a.m. to 4:30 p.m. ET.

Ready-to-Cook Weight Up 7 Percent

Poultry certified wholesome during September 2003 (ready-to-cook weight) totaled 3.32 billion pounds, up 7 percent from the amount certified in September 2002. Updated totals for August 2003 show that 3.25 billion pounds were certified.

The preliminary total live weight of poultry inspected during September 2003 was 4.46 billion pounds, up 7 percent from a year ago. Young chickens inspected totaled 3.79 billion pounds, up 8 percent from September 2002, and mature chickens at 65.2 million pounds, were down 14 percent from the previous year. Turkey inspections totaled 589 million pounds, up 4 percent, and ducks totaled 13.6 million pounds, up slightly.

Young chickens slaughtered during September 2003 averaged 5.20 pounds per bird, up 2 percent from September 2002. The average live weight of mature chickens was 5.90 pounds per bird, up 8 percent from a year ago. Turkeys slaughtered during September 2003 averaged 26.3 pounds per bird, up 1 percent from September 2002.

Ante-mortem condemnations during September 2003 totaled 15.1 million pounds. Condemnations were 0.34 percent of the live weight inspected, compared to 0.42 percent a year earlier. Post-mortem condemnations, at 43.1 million pounds (N.Y. dressed weight), were 1.08 percent of quantities inspected, compared with 1.16 percent a year earlier.

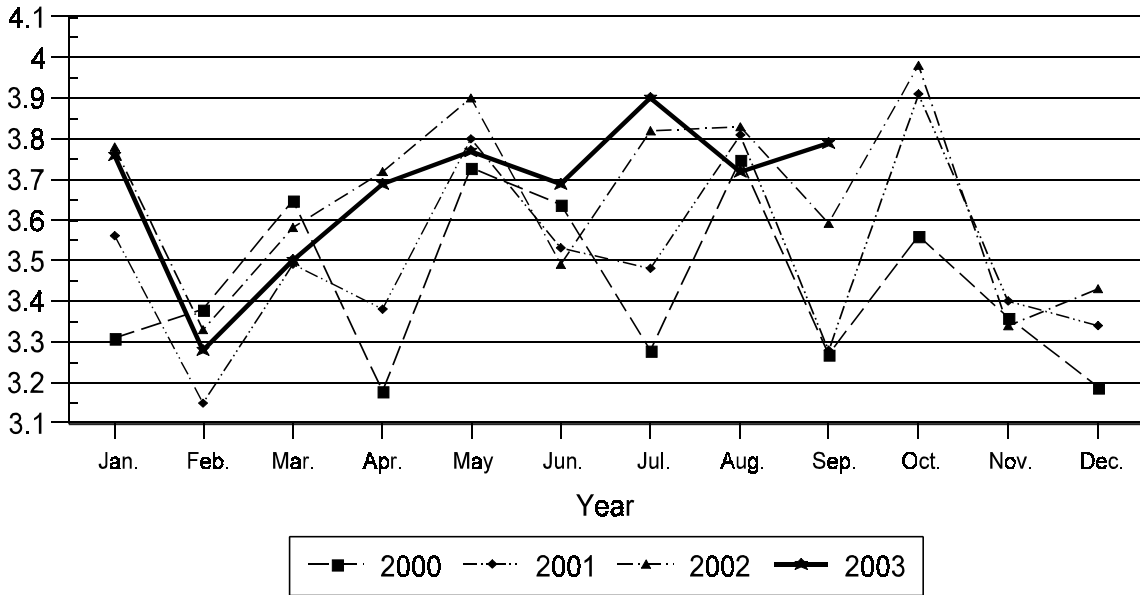
September 2003 contained 22 weekdays (including one holiday) and four Saturdays. September 2002 contained 21 weekdays (including one holiday) and four Saturdays.

Contents

	Page
Poultry Slaughter: Number, Live Weight, and Average Live Weight by Type, United States, September 2003	4
Poultry Slaughter: Chilled and Frozen, Pounds Certified by Type, United States, September 2003	6
Poultry Slaughter: Ante-Mortem Condemnations by Type, United States, September 2003	8
Poultry Slaughter: Post-Mortem Condemnations by Type, United States, September 2003	9
Young Chickens Slaughtered: Number, Live Weight, and Average Live Weight, by State and United States, September 2003	10
Young Chickens Slaughtered: Pounds Certified and Post-Mortem Condemnations, by State and United States, September 2003	11
Young Chickens Slaughtered: Number Condemned Post-Mortem by Cause, by Type, by State and United States, August 2003	12
Young Chickens Slaughtered: Number Condemned Post-Mortem by Cause, by Type, by State and United States, September 2003	14
Young Turkeys (Mature) Slaughtered: Number, Live Weight, and Average Live Weight, by State and United States, September 2003	16
Young Turkeys (Mature) Slaughtered: Pounds Certified and Post-Mortem Condemnations, by State and United States, September 2003	16
Young Turkeys Slaughtered: Number Condemned Post-Mortem by Cause, by Type, by State and United States, August 2003	17
Young Turkeys Slaughtered: Number Condemned Post-Mortem by Cause, by Type, by State and United States, September 2003	18
Reliability Statement	19
Definitions	20

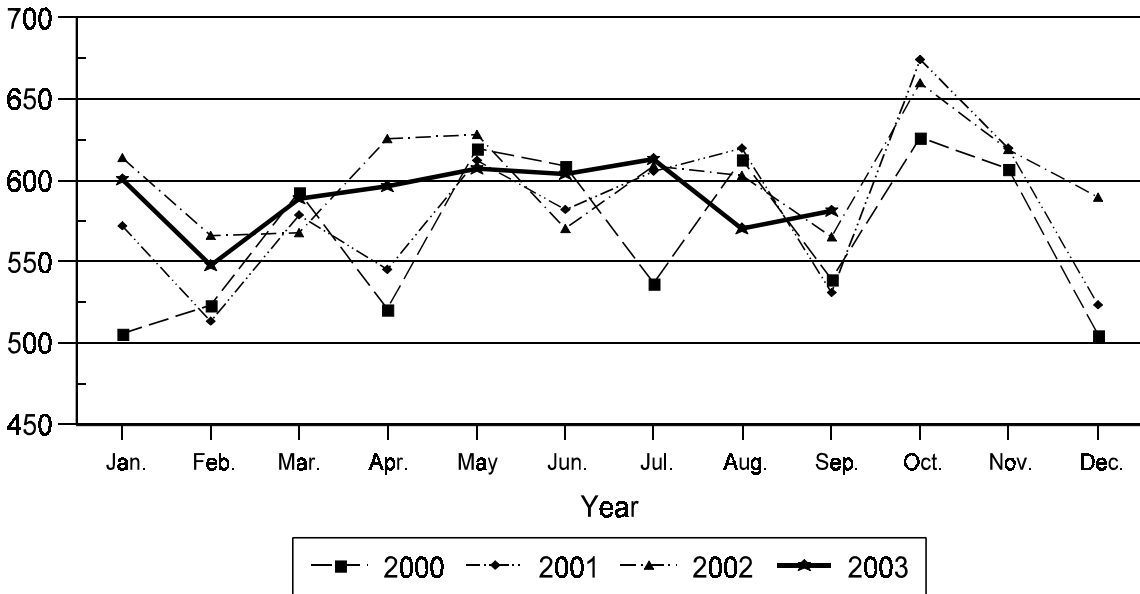
Young Chickens: Live Weight Slaughtered, by Month, 2000-2003

Billion Pounds



Young Turkeys: Live Weight Slaughtered, by Month, 2000-2003

Million Pounds



**Poultry Slaughter: Number, Live Weight, and Average Live Weight by Type,
United States, September 2003¹**

Commodity	Sep 2002	Aug 2003	Sep 2003	Percent of	
				Sep 2002	Aug 2003
	<i>1,000 Head</i>	<i>1,000 Head</i>	<i>1,000 Head</i>	<i>Percent</i>	<i>Percent</i>
Number Slaughtered					
Chickens					
Young	686,869	723,786	728,238	106	101
Mature	13,843	11,685	11,055	80	95
Light	7,512	5,515	5,037	67	91
Heavy	6,331	6,170	6,018	95	98
Total	700,712	735,471	739,293	106	101
Turkeys					
Young	21,503	22,019	22,106	103	100
Old	285	339	286	100	84
Total	21,788	22,358	22,392	103	100
Ducks	2,031	1,893	2,037	100	108
	<i>1,000 pounds</i>	<i>1,000 pounds</i>	<i>1,000 pounds</i>	<i>Percent</i>	<i>Percent</i>
Live Weight					
Chickens					
Young	3,514,256	3,716,037	3,787,428	108	102
Mature	75,784	68,573	65,243	86	95
Light	25,411	19,260	17,261	68	90
Heavy	50,373	49,313	47,982	95	97
Total	3,590,040	3,784,610	3,852,671	107	102
Turkeys					
Young	558,005	570,004	580,960	104	102
Old	7,558	8,583	7,889	104	92
Total	565,563	578,587	588,849	104	102
Ducks	13,545	12,431	13,600	100	109
Other Poultry	1,806	859	1,272	70	148
Total Poultry	4,170,954	4,376,487	4,456,392	107	102
	<i>Pounds</i>	<i>Pounds</i>	<i>Pounds</i>	<i>Percent</i>	<i>Percent</i>
Average Live Weight					
Chickens					
Young	5.12	5.13	5.20	102	101
Mature	5.47	5.87	5.90	108	101
Light	3.38	3.49	3.43	101	98
Heavy	7.96	7.99	7.97	100	100
Total	5.12	5.15	5.21	102	101
Turkeys					
Young	25.95	25.89	26.28	101	102
Old	26.52	25.35	27.63	104	109
Total	25.96	25.88	26.30	101	102
Ducks	6.67	6.56	6.68	100	102

See footnote(s) at end of table.

--continued

**Poultry Slaughter: Number, Live Weight, and Average Live Weight by Type,
United States, September 2003 ¹ (continued)**

Commodity	January to Date			Percent of	
	2001	2002	2003	2001	2002
	<i>1,000 Head</i>	<i>1,000 Head</i>	<i>1,000 Head</i>	<i>Percent</i>	<i>Percent</i>
Number Slaughtered					
Chickens					
Young	6,318,275	6,463,228	6,397,788	101	99
Mature	120,145	129,532	114,456	95	88
Light	68,239	74,897	60,334	88	81
Heavy	51,906	54,635	54,122	104	99
Total	6,438,420	6,592,760	6,512,244	101	99
Turkeys					
Young	196,384	198,804	196,483	100	99
Old	1,726	1,806	2,358	137	131
Total	198,110	200,610	198,841	100	99
Ducks	19,990	17,968	17,974	90	100
	<i>1,000 pounds</i>	<i>1,000 pounds</i>	<i>1,000 pounds</i>	<i>Percent</i>	<i>Percent</i>
Live Weight					
Chickens					
Young	31,689,474	32,930,405	33,093,173	104	100
Mature	643,891	687,119	635,583	99	92
Light	233,840	255,349	206,388	88	81
Heavy	410,051	431,770	429,195	105	99
Total	32,333,365	33,617,524	33,728,756	104	100
Turkeys					
Young	5,145,919	5,325,185	5,303,634	103	100
Old	45,504	49,152	63,312	139	129
Total	5,191,423	5,374,337	5,366,946	103	100
Ducks	131,810	119,973	117,757	89	98
Other Poultry	9,149	8,530	7,235	79	85
Total Poultry	37,665,747	39,120,364	39,220,694	104	100
	<i>Pounds</i>	<i>Pounds</i>	<i>Pounds</i>	<i>Percent</i>	<i>Percent</i>
Average Live Weight					
Chickens					
Young	5.02	5.10	5.17	103	101
Mature	5.36	5.30	5.55	104	105
Light	3.43	3.41	3.42	100	100
Heavy	7.90	7.90	7.93	100	100
Total	5.02	5.10	5.18	103	102
Turkeys					
Young	26.20	26.79	26.99	103	101
Old	26.36	27.21	26.86	102	99
Total	26.20	26.79	26.99	103	101
Ducks	6.59	6.68	6.55	99	98

¹ Federally inspected only.

**Poultry Slaughter: Chilled and Frozen, Pounds Certified by Type,
United States, September 2003 ¹**

Commodity	Sep 2002	Aug 2003	Sep 2003	Percent of	
				Sep 2002	Aug 2003
	<i>1,000 Pounds</i>	<i>1,000 Pounds</i>	<i>1,000 Pounds</i>	<i>Percent</i>	<i>Percent</i>
Chilled					
Chickens					
Young	2,334,451	2,464,953	2,502,667	107	102
Mature	44,639	41,108	40,061	90	97
Light	11,794	9,599	8,747	74	91
Heavy	32,845	31,509	31,314	95	99
Total	2,379,090	2,506,061	2,542,728	107	101
Turkeys					
Young	234,365	230,126	232,870	99	101
Old	4,446	4,926	4,640	104	94
Total	238,811	235,052	237,510	99	101
Ducks	3,324	3,366	6,023	181	179
Other Poultry	250	229	166	66	72
Total Poultry	2,621,475	2,744,708	2,786,427	106	102
Frozen					
Chickens					
Young	261,973	277,354	310,925	119	112
Mature	1,792	256	146	8	57
Light	1,233	90	68	6	76
Heavy	559	166	78	14	47
Total	263,765	277,610	311,071	118	112
Turkeys					
Young	204,399	219,161	218,517	107	100
Old	1,370	1,433	1,373	100	96
Total	205,769	220,594	219,890	107	100
Ducks	6,480	5,670	4,559	70	80
Other Poultry	842	315	610	72	194
Total Poultry	476,856	504,189	536,130	112	106
Total Chilled and Frozen					
Chickens					
Young	2,596,424	2,742,307	2,813,592	108	103
Mature	46,431	41,364	40,207	87	97
Light	13,027	9,689	8,815	68	91
Heavy	33,404	31,675	31,392	94	99
Total	2,642,855	2,783,671	2,853,799	108	103
Turkeys					
Young	438,764	449,287	451,387	103	100
Old	5,816	6,359	6,013	103	95
Total	444,580	455,646	457,400	103	100
Ducks	9,804	9,036	10,582	108	117
Other Poultry	1,092	544	776	71	143
Total Poultry	3,098,331	3,248,897	3,322,557	107	102

See footnote(s) at end of table.

--continued

**Poultry Slaughter: Chilled and Frozen, Pounds Certified by Type,
United States, September 2003 ¹ (continued)**

Commodity	January to Date			Percent of	
	2001	2002	2003	2001	2002
	<i>1,000 Pounds</i>	<i>1,000 Pounds</i>	<i>1,000 Pounds</i>	<i>Percent</i>	<i>Percent</i>
Chilled					
Chickens					
Young	21,370,736	21,999,842	22,021,599	103	100
Mature	377,381	399,083	378,629	100	95
Light	111,340	119,775	99,131	89	83
Heavy	266,041	279,308	279,498	105	100
Total	21,748,117	22,398,925	22,400,228	103	100
Turkeys					
Young	1,956,790	2,097,032	2,166,188	111	103
Old	27,712	30,513	40,503	146	133
Total	1,984,502	2,127,545	2,206,691	111	104
Ducks	36,433	31,334	31,892	88	102
Other Poultry	2,345	1,994	1,807	77	91
Total Poultry	23,771,397	24,559,798	24,640,618	104	100
Frozen					
Chickens					
Young	2,032,388	2,303,666	2,437,460	120	106
Mature	11,226	14,241	7,337	65	52
Light	9,305	11,520	5,442	58	47
Heavy	1,921	2,721	1,895	99	70
Total	2,043,614	2,317,907	2,444,797	120	105
Turkeys					
Young	2,115,882	2,096,610	2,008,672	95	96
Old	7,226	7,049	6,619	92	94
Total	2,123,108	2,103,659	2,015,291	95	96
Ducks	57,996	56,381	53,492	92	95
Other Poultry	3,150	3,235	2,649	84	82
Total Poultry	4,227,868	4,481,182	4,516,229	107	101
Total Chilled and Frozen					
Chickens					
Young	23,403,124	24,303,508	24,459,059	105	101
Mature	388,607	413,324	385,966	99	93
Light	120,645	131,295	104,573	87	80
Heavy	267,962	282,029	281,393	105	100
Total	23,791,731	24,716,832	24,845,025	104	101
Turkeys					
Young	4,072,672	4,193,642	4,174,860	103	100
Old	34,938	37,562	47,122	135	125
Total	4,107,610	4,231,204	4,221,982	103	100
Ducks	94,429	87,715	85,384	90	97
Other Poultry	5,495	5,229	4,456	81	85
Total Poultry	27,999,265	29,040,980	29,156,847	104	100

¹ Ready-to-cook weights.

**Poultry Slaughter: Ante-Mortem Condemnations by Type,
United States, September 2003¹**

Commodity	Sep 2002	Aug 2003	Sep 2003	Percent of		January to Date		Percent of 2002
				Sep 2002	Aug 2003	2002	2003	
	<i>1,000 Pounds</i>	<i>1,000 Pounds</i>	<i>1,000 Pounds</i>	<i>Percent</i>	<i>Percent</i>	<i>1,000 Pounds</i>	<i>1,000 Pounds</i>	<i>Percent</i>
Live Weight								
Chickens								
Young	13,683	16,626	12,443	91	75	138,280	131,803	95
Mature	1,700	1,748	763	45	44	14,220	10,764	76
Light	849	644	273	32	42	6,370	5,013	79
Heavy	851	1,104	490	58	44	7,850	5,751	73
Total	15,383	18,374	13,206	86	72	152,500	142,567	93
Turkeys								
Young	1,969	2,310	1,749	89	76	17,676	20,144	114
Old	81	98	89	110	91	507	1,106	218
Total	2,050	2,408	1,838	90	76	18,183	21,250	117
Ducks	26	32	33	127	103	265	260	98
Other Poultry	8	1	4	50	400	39	20	51
Total Poultry	17,467	20,815	15,081	86	72	170,987	164,097	96
	<i>Percent</i>	<i>Percent</i>	<i>Percent</i>	<i>Percent</i>	<i>Percent</i>	<i>Percent</i>	<i>Percent</i>	<i>Percent</i>
Percent of Total Weight Condemned ²								
Chickens								
Young	0.39	0.45	0.33	85	73	0.42	0.40	95
Mature	2.24	2.55	1.17	52	46	2.07	1.70	82
Light	3.34	3.34	1.58	47	47	2.49	2.43	98
Heavy	1.69	2.24	1.02	60	46	1.82	1.35	74
Total	0.43	0.49	0.34	79	69	0.45	0.42	93
Turkeys								
Young	0.35	0.40	0.30	86	75	0.33	0.38	115
Old	1.08	1.14	1.13	105	99	1.03	1.75	170
Total	0.36	0.42	0.31	86	74	0.34	0.40	118
Ducks	0.19	0.26	0.24	126	92	0.22	0.22	100
Other Poultry	0.45	0.16	0.30	67	188	0.47	0.31	66
Total Poultry	0.42	0.48	0.34	81	71	0.44	0.42	95

¹ Federally inspected only.

² Pounds condemned as a percent of live weight pounds inspected.

**Poultry Slaughter: Post-Mortem Condemnations by Type,
United States, September 2003¹**

Commodity	Sep 2002	Aug 2003	Sep 2003	Percent of		January to Date		Percent of 2002
				Sep 2002	Aug 2003	2002	2003	
	<i>1,000 Pounds</i>	<i>1,000 Pounds</i>	<i>1,000 Pounds</i>	<i>Percent</i>	<i>Percent</i>	<i>1,000 Pounds</i>	<i>1,000 Pounds</i>	<i>Percent</i>
N.Y. Dressed Weight								
Chickens								
Young	27,638	28,642	28,478	103	99	293,812	275,330	94
Mature	4,189	2,972	2,983	71	100	35,146	33,093	94
Light	2,114	1,438	1,462	69	102	18,080	17,811	99
Heavy	2,075	1,534	1,521	73	99	17,066	15,282	90
Total	31,827	31,614	31,461	99	100	328,958	308,423	94
Turkeys								
Young	10,970	9,862	10,987	100	111	98,728	94,130	95
Old	369	428	394	107	92	3,065	3,930	128
Total	11,339	10,290	11,381	100	111	101,793	98,060	96
Ducks	227	245	279	123	114	2,198	2,556	116
Other Poultry	19	9	13	68	144	97	107	110
Total Poultry	43,412	42,158	43,134	99	102	433,046	409,146	94
	<i>Percent</i>	<i>Percent</i>	<i>Percent</i>	<i>Percent</i>	<i>Percent</i>	<i>Percent</i>	<i>Percent</i>	<i>Percent</i>
Percent of Total Weight Condemned ²								
Chickens								
Young	0.87	0.86	0.84	97	98	0.99	0.92	93
Mature	6.14	4.82	5.08	83	105	5.68	5.79	102
Light	9.24	8.30	9.41	102	113	7.87	9.59	122
Heavy	4.58	3.46	3.52	77	102	4.39	3.96	90
Total	0.99	0.93	0.91	92	98	1.09	1.02	94
Turkeys								
Young	2.18	1.92	2.10	96	109	2.06	1.97	96
Old	5.43	5.53	5.54	102	100	6.93	6.90	100
Total	2.23	1.98	2.15	96	109	2.10	2.03	97
Ducks	1.86	2.19	2.28	123	104	2.03	2.41	119
Other Poultry	1.20	1.14	1.16	97	102	1.30	1.69	130
Total Poultry	1.16	1.07	1.08	93	101	1.23	1.16	94

¹ Federally inspected only.

² Pounds condemned as a percent of N.Y. dressed weight of quantity inspected.

**Young Chickens Slaughtered: Number, Live Weight, and Average Live Weight,
by State and United States, September 2003**

State	Number Slaughtered		Live Weight		Average Live Weight	
	August	September	August	September	August	September
	<i>1,000 Head</i>	<i>1,000 Head</i>	<i>1,000 Pounds</i>	<i>1,000 Pounds</i>	<i>Pounds</i>	<i>Pounds</i>
AL	87,679	86,747	445,989	445,857	5.09	5.14
AR	95,977	98,972	470,466	500,729	4.90	5.06
CA	*	*	*	*	*	*
DE	23,100	23,332	143,158	146,559	6.20	6.28
FL	10,273	10,345	55,868	56,226	5.44	5.43
GA	104,516	108,221	522,633	542,260	5.00	5.01
KY	17,640	17,820	98,399	102,232	5.58	5.74
LA	15,862	14,850	78,397	76,182	4.94	5.13
MD	14,697	14,832	70,765	72,526	4.81	4.89
MS	65,308	65,673	335,418	344,256	5.14	5.24
MO	33,600	34,388	155,725	156,436	4.63	4.55
NJ	*	*	*	*	*	*
NY	*	*	*	*	*	*
NC	59,806	58,557	362,403	355,354	6.06	6.07
OH	3,592	3,658	19,003	19,271	5.29	5.27
PA	9,072	9,582	46,717	50,616	5.15	5.28
SC	18,819	20,968	107,667	121,645	5.72	5.80
TN	18,962	18,073	94,376	93,487	4.98	5.17
TX	54,342	54,223	268,567	264,294	4.94	4.87
VA	28,894	27,284	140,104	137,074	4.85	5.02
WA	5,039	4,707	26,666	25,136	5.29	5.34
Oth Sts	56,608	56,006	273,716	277,288	4.84	4.95
US	723,786	728,238	3,716,037	3,787,428	5.13	5.20

* Included in "Other States" to avoid disclosing individual operations.

**Young Chickens Slaughtered: Pounds Certified and Post-Mortem Condemnations
by State and United States, September 2003**

State	Total Chilled and Frozen Pounds Certified ¹		Post-Mortem Condemnations			
	August	September	N.Y. Dressed Weight		Percent ²	
			August	September	August	September
	<i>1,000 Pounds</i>	<i>1,000 Pounds</i>	<i>1,000 Pounds</i>	<i>1,000 Pounds</i>	<i>Percent</i>	<i>Percent</i>
AL	329,861	326,436	3,798	3,679	0.95	0.92
AR	341,618	365,535	3,041	3,146	0.72	0.70
CA	*	*	*	*	*	*
DE	102,588	106,207	2,038	2,214	1.58	1.68
FL	40,677	40,244	702	719	1.40	1.42
GA	382,053	397,402	3,029	3,016	0.64	0.62
KY	71,165	72,926	685	633	0.77	0.69
LA	57,438	56,078	276	270	0.39	0.39
MD	51,194	51,830	909	857	1.43	1.31
MS	246,147	268,043	2,463	2,391	0.82	0.77
MO	116,042	115,984	1,354	953	0.97	0.68
NJ	*	*	*	*	*	*
NY	*	*	*	*	*	*
NC	281,948	278,690	3,393	3,432	1.04	1.07
OH	13,919	14,024	278	289	1.63	1.66
PA	33,797	36,192	620	713	1.48	1.57
SC	79,383	86,251	475	557	0.49	0.51
TN	67,743	67,453	503	561	0.59	0.67
TX	207,362	211,343	1,809	1,597	0.75	0.67
VA	101,619	96,449	1,051	1,022	0.83	0.83
WA	19,887	18,793	289	288	1.20	1.27
Oth Sts	197,866	203,712	1,929	2,141	0.78	0.86
US	2,742,307	2,813,592	28,642	28,478	0.86	0.84

* Included in "Other States" to avoid disclosing individual operations.

¹ Ready-to-cook weights.

² Pounds condemned as percent of equivalent N.Y. dressed weight of quantity inspected.

**Chickens Slaughtered: Number Condemned Post-Mortem by Cause, by Type,
by State and United States, August 2003**

State	Tuber- culosis	Leukosis	Septicemia	Airsac- culitis	Synovitis	Tumors
	<i>Number of Head</i>	<i>Number of Head</i>	<i>Number of Head</i>	<i>Number of Head</i>	<i>Number of Head</i>	<i>Number of Head</i>
Young Birds						
AL		499	111,634	32,511	*	*
AR		1,380	145,313	55,608	2,818	2,040
CA		*	*	*	373	560
DE		1,954	106,299	21,588	45	*
FL		117	*	8,837	*	*
GA		423	86,901	39,425	497	3,699
IN		*	4,217	*	*	*
KY		*	44,567	*	38	2,361
LA		*	15,456	4,112	151	175
MD		1,200	52,499	14,854	52	5,035
MS		275	71,787	23,115	434	604
MO		830	69,548	14,687	*	*
NJ		*	*	*	*	*
NY		92	*	*	*	*
NC		386	87,223	30,069	*	*
OH		97	15,099	*	*	*
PA		*	17,303	7,921	91	283
SC		*	11,258	6,208	116	*
TN		66	32,527	6,532	*	330
TX		*	100,042	28,155	*	2,200
VA		227	55,872	17,096	12	*
WA		59	*	*	*	*
Oth Sts		4,668	176,827	29,172	5,670	38,844
US		12,273	1,204,372	339,890	10,297	56,131
Mature Birds						
Light		2,043	138,337	10,507	37	69,422
Heavy	2	1,113	67,122	3,728	415	12,851
US	2	3,156	205,459	14,235	452	82,273

See footnote(s) at end of table.

--continued

**Chickens Slaughtered: Number Condemned Post-Mortem by Cause, by Type,
by State and United States, August 2003 (continued)**

	Bruises	Cadaver	Contam-ination	Overscald	Other	Total ¹
	<i>Number of Head</i>	<i>Number of Head</i>	<i>Number of Head</i>	<i>Number of Head</i>	<i>Number of Head</i>	<i>Number of Head</i>
Young Birds						
AL	4,390	26,188	25,102	6,790	93,046	306,424
AR	6,842	13,627	26,845	2,356	33,212	290,041
CA	302	*	1,643	*	*	142,217
DE	2,729	21,675	14,130	*	18,727	199,274
FL	*	3,769	*	714	13,068	58,307
GA	3,978	28,810	15,023	11,264	39,948	229,968
IN	*	*	*	*	*	*
KY	230	9,630	*	*	3,486	72,268
LA	513	2,700	2,643	*	1,610	28,841
MD	*	17,366	*	3,741	11,800	128,754
MS	3,904	19,937	15,179	613	34,334	170,182
MO	1,720	14,535	16,155	1,259	34,035	155,223
NJ	*	*	*	*	*	*
NY	787	*	3,214	315	*	*
NC	4,138	24,216	21,325	7,308	76,284	267,124
OH	*	942	*	*	*	30,737
PA	1,001	2,692	4,581	580	*	49,861
SC	*	4,697	*	*	2,298	31,169
TN	807	12,420	3,927	*	7,218	65,511
TX	1,155	7,662	7,425	811	10,406	158,368
VA	1,763	14,553	*	*	13,841	125,705
WA	*	860	*	*	6,688	23,352
Oth Sts	6,453	11,443	64,955	23,887	87,551	137,408
US	40,712	237,722	222,147	59,638	487,552	2,670,734
Mature Birds						
Light	13,568	32,708	128,161	236	55,049	450,068
Heavy	2,001	24,343	19,521	1,910	61,288	194,294
US	15,569	57,051	147,682	2,146	116,337	644,362

* Included in "Other States" to avoid disclosing individual operations.

¹ The sum of the individual diseases does not add across to the total for "Other States".

**Chickens Slaughtered: Number Condemned Post-Mortem by Cause, by Type,
by State and United States, September 2003**

State	Tuber- culosis	Leukosis	Septicemia	Airsac- culitis	Synovitis	Tumors
	<i>Number of Head</i>	<i>Number of Head</i>	<i>Number of Head</i>	<i>Number of Head</i>	<i>Number of Head</i>	<i>Number of Head</i>
Young Birds						
AL		517	107,337	25,773	*	*
AR		1,014	140,786	54,258	*	2,145
CA		*	*	3,166	384	859
DE		752	130,149	23,600	40	*
FL		*	*	*	*	*
GA		*	88,539	36,705	*	3,781
IN		*	5,366	*	*	*
KY		*	34,642	7,252	*	*
LA		*	13,965	4,732	*	130
MD		1,458	48,953	14,513	*	4,695
MS		286	74,348	22,977	376	757
MO		977	63,989	10,485	*	*
NJ		*	*	*	*	*
NY		146	*	*	*	*
NC		599	85,625	27,712	206	15,586
OH		*	17,411	*	*	*
PA		126	18,854	8,095	*	402
SC		*	*	*	*	*
TN		84	33,073	7,434	102	384
TX		*	82,333	17,801	273	1,994
VA		176	55,815	*	*	*
WA		101	*	2,886	*	*
Oth Sts		2,079	180,610	63,799	10,566	25,074
US		8,315	1,181,795	331,188	11,947	55,807
Mature Birds						
Light		9,823	148,815	14,548	2,665	66,656
Heavy		764	72,493	3,760	314	11,536
US		10,587	221,308	18,308	2,979	78,192

See footnote(s) at end of table.

--continued

**Chickens Slaughtered: Number Condemned Post-Mortem by Cause, by Type,
by State and United States, September 2003 (continued)**

	Bruises	Cadaver	Contam-ination	Overscald	Other	Total ¹
	<i>Number of Head</i>	<i>Number of Head</i>	<i>Number of Head</i>	<i>Number of Head</i>	<i>Number of Head</i>	<i>Number of Head</i>
Young Birds						
AL	4,171	22,514	19,193	5,026	72,758	263,522
AR	6,487	15,582	24,139	*	37,910	286,812
CA	519	*	2,281	*	*	123,430
DE	2,681	22,294	14,994	*	21,906	228,890
FL	923	4,293	*	3,412	11,124	70,361
GA	3,465	29,780	19,193	5,744	38,627	226,989
IN	*	*	199	*	*	*
KY	163	11,124	*	1,273	2,620	64,735
LA	408	*	*	*	1,572	29,407
MD	*	16,041	*	2,276	12,004	123,276
MS	3,607	21,468	18,928	1,055	44,875	188,677
MO	1,541	9,739	12,710	1,034	30,526	133,631
NJ	*	*	*	2	*	*
NY	885	*	3,832	380	*	*
NC	4,021	26,892	20,958	5,291	65,063	251,953
OH	*	964	*	*	*	32,152
PA	953	2,686	4,684	203	*	47,495
SC	703	*	*	*	*	50,307
TN	708	7,977	3,873	1,437	8,708	63,780
TX	1,044	7,073	6,886	*	7,330	126,270
VA	1,778	11,413	*	*	13,475	118,901
WA	*	*	*	*	6,522	*
Oth Sts	5,003	26,552	70,276	25,114	72,657	155,986
US	39,060	236,392	222,146	52,247	447,677	2,586,574
Mature Birds						
Light	7,598	18,204	121,312	1,610	39,518	430,749
Heavy	3,038	20,338	22,348	2,019	63,926	200,536
US	10,636	38,542	143,660	3,629	103,444	631,285

* Included in "Other States" to avoid disclosing individual operations.

¹ The sum of the individual diseases does not add across to the total for "Other States".

Young Turkeys (Mature) Slaughtered: Number, Live Weight, and Average Live Weight, by State and United States, September 2003

State	Number Slaughtered		Live Weight		Average Live Weight	
	August	September	August	September	August	September
	<i>1,000 Head</i>	<i>1,000 Head</i>	<i>1,000 Pounds</i>	<i>1,000 Pounds</i>	<i>Pounds</i>	<i>Pounds</i>
AR	2,910	2,713	50,747	47,646	17.44	17.56
CA	*	1,604	*	38,706	*	24.14
IA	1,514	1,605	43,750	48,770	28.89	30.39
MN	3,177	3,003	80,025	81,449	25.19	27.13
MO	1,488	1,490	45,081	44,516	30.29	29.88
NC	3,175	*	81,061	*	25.53	*
OH	*	*	*	*	*	*
PA	*	*	*	*	*	*
VA	*	*	*	*	*	*
Oth Sts	9,755	11,691	269,340	319,873	27.61	27.36
US	22,019	22,106	570,004	580,960	25.89	26.28

* Included in "Other States" to avoid disclosing individual operations.

Young Turkeys (Mature) Slaughtered: Pounds Certified and Post-Mortem Condemnations, by State and United States, September 2003

State	Total Chilled and Frozen Pounds Certified ¹		Post-Mortem Condemnations			
			N.Y. Dressed Weight		Percent ²	
	August	September	August	September	August	September
	<i>1,000 Pounds</i>	<i>1,000 Pounds</i>	<i>1,000 Pounds</i>	<i>1,000 Pounds</i>	<i>Percent</i>	<i>Percent</i>
AR	42,096	39,419	791	754	1.73	1.76
CA	*	30,822	*	937	*	2.69
IA	34,343	37,870	956	1,031	2.43	2.35
MN	62,977	59,367	1,476	1,364	2.05	1.86
MO	35,168	34,701	1,112	1,508	2.74	3.76
NC	64,670	*	1,044	*	1.43	*
OH	*	*	*	*	*	*
PA	*	*	*	*	*	*
VA	*	*	*	*	*	*
Oth Sts	210,033	249,208	4,483	5,393	1.85	1.87
US	449,287	451,387	9,862	10,987	1.92	2.10

* Included in "Other States" to avoid disclosing individual operations.

¹ Ready-to-cook weights.

² Pounds condemned as percent of equivalent N.Y. dressed weight of quantity inspected.

**Turkeys Slaughtered: Number Condemned Post-Mortem by Cause, by Type,
by State and United States, August 2003**

State	Tuber- culosis	Leukosis	Septicemia	Airsac- culitis	Synovitis	Tumors
	<i>Number of Head</i>	<i>Number of Head</i>	<i>Number of Head</i>	<i>Number of Head</i>	<i>Number of Head</i>	<i>Number of Head</i>
Young (Mature)						
AR		*	5,955	630	*	*
CA		*	7,392	522	*	5
IA			4,849	1,751	*	*
MN		*	17,177	*	*	*
MO			15,553	*		
NC		*	3,218	*	2	*
OH			*	*	*	
PA		*	*	458	*	
VA		*	*	*	*	*
Other States		933	31,950	7,771	5,073	109
US		933	86,094	11,132	5,075	114
Old (Breeders)						
US		25	4,981	1,562	17	263
	Bruises	Cadaver	Contam- ination	Overscald	Other	Total ¹
	<i>Number of Head</i>	<i>Number of Head</i>	<i>Number of Head</i>	<i>Number of Head</i>	<i>Number of Head</i>	<i>Number of Head</i>
Young (Mature)						
AR	*	*	*	*	*	*
CA	9	*	*	*	*	9,609
IA	100	313	442	*	*	10,375
MN	*	654	1,185	*	3,025	25,417
MO	*	*	251	*	*	19,350
NC	*	1,169	356	*	608	6,885
OH	*	*	*	*	*	*
PA	*	*	*	*	*	*
VA	*	*	*	*	*	*
Other States	453	3,760	2,666	1,736	12,255	60,694
US	562	5,896	4,900	1,736	15,888	132,330
Old (Breeders)						
US	46	223	185	12	1,408	8,722

* Included in "Other States" to avoid disclosing individual operations.

¹ The sum of the individual diseases does not add across to the total for "Other States".

**Turkeys Slaughtered: Number Condemned Post-Mortem by Cause, by Type,
by State and United States, September 2003**

State	Tuber- culosis	Leukosis	Septicemia	Airsac- culitis	Synovitis	Tumors
	<i>Number of Head</i>	<i>Number of Head</i>	<i>Number of Head</i>	<i>Number of Head</i>	<i>Number of Head</i>	<i>Number of Head</i>
Young (Mature)						
AR			6,018	*	*	*
CA		*	13,803	668	*	5
IA			5,972	1,792	*	*
MN		*	16,323	*	*	*
MO			14,885	*	*	*
NC		*	3,937	*	*	*
OH		*	*	*	*	*
PA		*	*	*	*	*
VA		*	*	*	*	*
Other States		61	35,201	12,083	5,022	58
US		61	96,139	14,543	5,022	63
Old (Breeders)						
US		545	4,592	1,126	46	83
	Bruises	Cadaver	Contam- ination	Overscald	Other	Total ¹
	<i>Number of Head</i>	<i>Number of Head</i>	<i>Number of Head</i>	<i>Number of Head</i>	<i>Number of Head</i>	<i>Number of Head</i>
Young (Mature)						
AR	*	2,259	*	*	*	13,254
CA	*	359	*	*	681	17,472
IA	107	*	426	*	*	11,532
MN	129	558	647	169	2,718	23,259
MO	*	*	*	*	*	19,229
NC	60	949	390	*	*	7,671
OH	*	*	*	*	*	*
PA	31	*	130	*	*	*
VA	*	*	*	*	*	*
Other States	255	3,257	3,722	2,310	12,417	54,985
US	582	7,382	5,315	2,479	15,816	147,402
Old (Breeders)						
US	13	143	122	22	1,268	7,960

* Included in "Other States" to avoid disclosing individual operations.

¹ The sum of the individual diseases does not add across to the total for "Other States".

Poultry Slaughter Estimates

Data Sources: Primary data for poultry slaughter estimates are obtained from the Poultry Inspection Form (FSIS 6000-21). This form is completed by inspectors of the Food Safety and Inspection Service (FSIS), USDA for all Federally Inspected (FI) plants. Over 99 percent of the total U.S. slaughter for any species is under FI. The FSIS 6000-21 forms collect number of head slaughtered daily under FI by species and class as well as condemnations and total live and dressed weights. Approximately 350 plants in the U.S. are operated under Federal Inspection.

Revision Policy: Revisions are generally the result of late reports received by FSIS from plants and are usually less than one-half of 1 percent of the preliminary totals. Revisions for the previous month and year-to-date totals are published in each monthly release. Final data are published in the annual summary released in April and reflect any late reports or corrections which occurred after the monthly revision were published.

Procedures and Reliability: Plant inspectors submit forms (FSIS 6000-21) weekly summarizing the plant's activity. When inconsistencies in the data are detected, the reports are returned to the inspectors for correction. Inspectors correct or validate the report and resubmit it. The reports cover weekly activities through Saturday night and reported data are allocated to the appropriate month as it enters the database.

A NASS computer program provides a review of current data with historical data for each plant. An edit provides checks for the detection of errors such as invalid plant information, duplication, and erroneous data. Data are summarized weekly and accumulated to monthly totals for this release.

Data for major slaughter plants with missing reports are adjusted prior to publication to assure that all plants slaughtering a significant portion of a specific class are accounted for each week. Estimates for missing weeks are made only after verifying that the plant was in operation. Adjustments are based on either the previous week's information or a week determined to be similar to the one missing. Late reports replace imputed data as they become available. While there is a varying degree of incompleteness from month to month, it has only a minimal impact on the published totals.

Poultry slaughter estimates are based on a census of operating plants and, therefore, have no sampling error. However, they may be subject to errors such as omissions, duplications, and mistakes in reporting, recording, and processing the data. These errors are minimized through strict quality controls in the edit and summarization process, and a careful review of all reported data for consistency and reasonableness.

State data are published for selected states for young chickens and young turkeys. State data are not published if less than three plants operate for a species in a State, or if one plant has 60 percent or more of the total live weight for that species. Data for all states not published are included in the "Other States" category. Also included in this category are data for published states that are confidential (denoted by an *). Data for all states are included in the U.S. totals. For 2002, young chickens were killed in 34 states, young turkeys in 21 states.

Definitions

Ante-Mortem Condemnations - Birds condemned prior to their entry into the slaughter plant.

Certified Ready-to-Cook - The weight of poultry certified wholesome by inspection after post-mortem condemnation pounds are removed. Ready-to-cook represents poultry meat ready for the marketing channel.

Ducks - Includes all ducks regardless of age and weight.

Fryer-Roaster Turkeys - Young immature birds, usually under 16 weeks of age. Included with young turkeys.

Mature Chickens - Fowl from breeder and market egg flocks and stags and cocks.

New York Dressed Weight - Carcass weight after only feathers and blood are removed. This weight is approximately 90% of live weight.

Old Turkeys (Breeders) - Fully matured birds held for egg production, usually over 15 months of age.

Other Poultry - Includes all other ready-to-cook products which bear the USDA Inspected for Wholesomeness legend.

Post-Mortem Condemnations - Carcasses or parts condemned by the inspector because of disease or mishandling and removed from the slaughter line and destroyed.

Young Chickens - Commercially grown broilers-fryers and other young immature birds such as roasters and capons.

Young Turkeys (Mature) - Young birds grown to a matured market age, about 5 months.

The next "*Poultry Slaughter*" report will be released at 8:30 a.m. ET on December 5, 2003.

The United States Department of Agriculture (USDA) prohibits discrimination in all its programs on the basis of race, color, national origin, gender, religion, age, disability, political beliefs, sexual orientation, and marital or family status. (Not all prohibited bases apply to all programs.) Persons with disabilities who require alternative means for communication of program information (braille, large print, audiotape, etc.) should contact the USDA's TARGET Center at 202-720-2600 (voice and TDD).

To file a complaint of discrimination, write USDA, Director, Office of Civil Rights, Room 326-W, Whitten Building, 1400 Independence Avenue, SW, Washington, D.C., 20250-9410, or call 202-720-5964 (voice or TDD). USDA is an equal opportunity provider and employer.

ACCESS TO REPORTS!!

For your convenience, there are several ways to obtain NASS reports, data products, and services:

INTERNET ACCESS

All NASS reports are available free of charge on the worldwide Internet. For access, connect to the Internet and go to the NASS Home Page at: <http://www.usda.gov/nass/>. Select "Today's Reports" or Publications and then Reports Calendar or Publications and then Search, by Title or Subject.

E-MAIL SUBSCRIPTION

All NASS reports are available by subscription free of charge direct to your e-mail address. Starting with the NASS Home Page at <http://www.usda.gov/nass/>, click on **Publications**, then click on the **Subscribe by E-mail** button which takes you to the page describing e-mail delivery of reports. Finally, click on **Go to the Subscription Page** and follow the instructions.

PRINTED REPORTS OR DATA PRODUCTS

CALL OUR TOLL-FREE ORDER DESK: 800-999-6779 (U.S. and Canada)
Other areas, please call 703-605-6220 FAX: 703-605-6900
(Visa, MasterCard, check, or money order acceptable for payment.)

ASSISTANCE

For **assistance** with general agricultural statistics or further information about NASS or its products or services, contact the **Agricultural Statistics Hotline** at **800-727-9540**, 7:30 a.m. to 4:00 p.m. ET, or e-mail: nass@nass.usda.gov.
