



# Poultry Slaughter

---

Released December 5, 2003, by the National Agricultural Statistics Service (NASS), Agricultural Statistics Board, U.S. Department of Agriculture. For information on "*Poultry Slaughter*" call John Lange at 202-720-0585, office hours 7:00 a.m. to 4:30 p.m. ET.

## Ready-to-Cook Weight Up 2 Percent

Poultry certified wholesome during October 2003 (ready-to-cook weight) totaled 3.62 billion pounds, up 2 percent from the amount certified in October 2002. Updated totals for September 2003 show that 3.33 billion pounds were certified.

The preliminary total live weight of poultry inspected during October 2003 was 4.85 billion pounds, up 2 percent from a year ago. Young chickens inspected totaled 4.10 billion pounds, up 2 percent from October 2002, mature chickens at 70.7 million pounds, were down 15 percent from the previous year. Turkey inspections totaled 669 million pounds, down slightly, and ducks totaled 15.2 million pounds, up 6 percent from last year.

Young chickens slaughtered during October 2003 averaged 5.27 pounds per bird, up 2 percent from October 2002. The average live weight of mature chickens was 5.75 pounds per bird, up 6 percent from a year ago. Turkeys slaughtered during October 2003 averaged 26.4 pounds per bird, down 1 percent from October 2002.

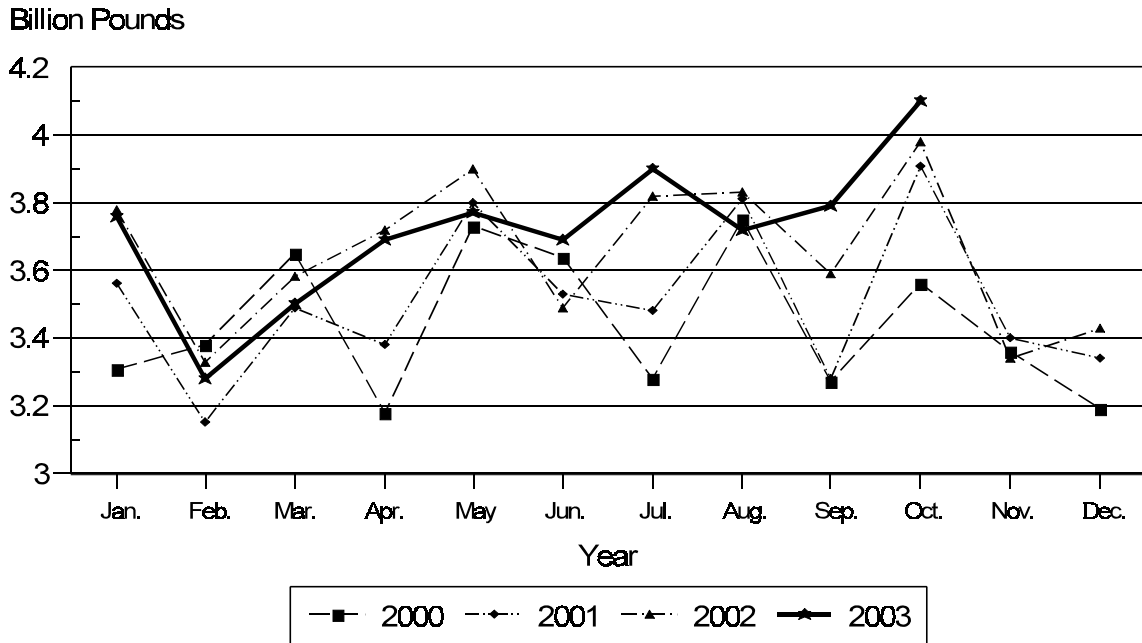
Ante-mortem condemnations during October 2003 totaled 16.9 million pounds. Condemnations were 0.35 percent of the live weight inspected, unchanged from a year earlier. Post-mortem condemnations, at 46.4 million pounds (N.Y. dressed weight), were 1.06 percent of quantities inspected, compared with 1.12 percent a year earlier.

October 2003 contained 23 weekdays (including one holiday) and four Saturdays. The same as October 2002.

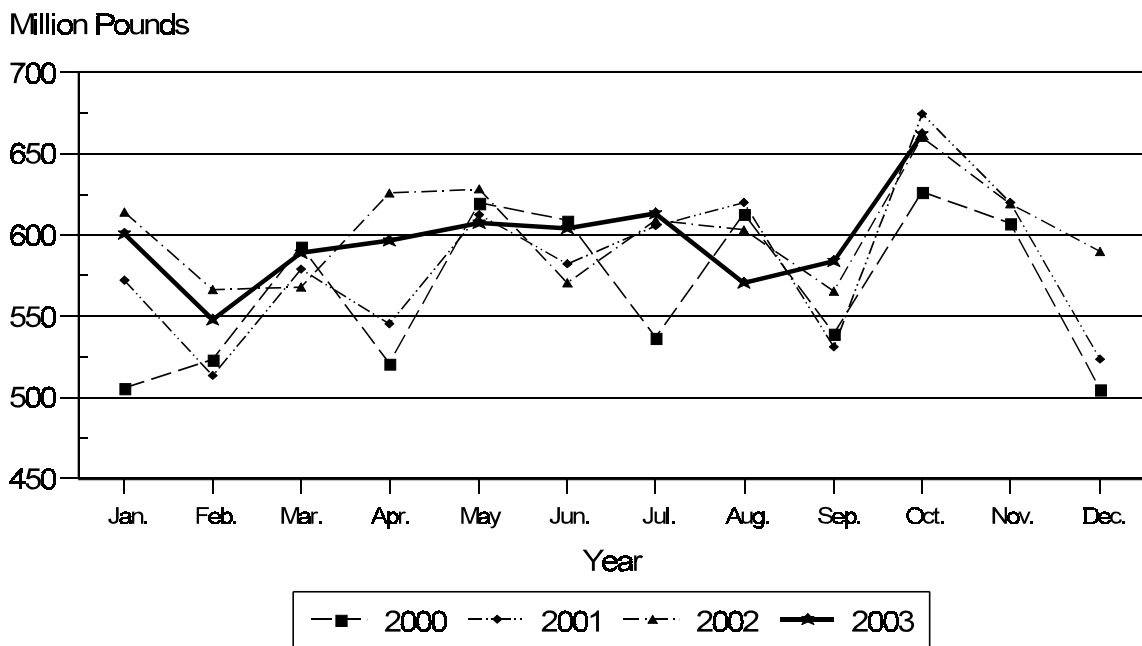
## Contents

	<b>Page</b>
Poultry Slaughter: Number, Live Weight, and Average Live Weight by Type, United States, October 2003 .....	4
Poultry Slaughter: Chilled and Frozen, Pounds Certified by Type, United States, October 2003 .....	6
Poultry Slaughter: Ante-Mortem Condemnations by Type, United States, October 2003 .....	8
Poultry Slaughter: Post-Mortem Condemnations by Type, United States, October 2003 .....	9
Young Chickens Slaughtered: Number, Live Weight, and Average Live Weight, by State and United States, October 2003 .....	10
Young Chickens Slaughtered: Pounds Certified and Post-Mortem Condemnations, by State and United States, October 2003 .....	11
Young Chickens Slaughtered: Number Condemned Post-Mortem by Cause, by Type, by State and United States, September 2003 .....	12
Young Chickens Slaughtered: Number Condemned Post-Mortem by Cause, by Type, by State and United States, October 2003 .....	14
Young Turkeys (Mature) Slaughtered: Number, Live Weight, and Average Live Weight, by State and United States, October 2003 .....	16
Young Turkeys (Mature) Slaughtered: Pounds Certified and Post-Mortem Condemnations, by State and United States, October 2003 .....	16
Young Turkeys Slaughtered: Number Condemned Post-Mortem by Cause, by Type, by State and United States, September 2003 .....	17
Young Turkeys Slaughtered: Number Condemned Post-Mortem by Cause, by Type, by State and United States, October 2003 .....	18
Reliability Statement .....	19
Definitions .....	20

## Young Chickens: Live Weight Slaughtered, by Month, 2000-2003



## Young Turkeys: Live Weight Slaughtered, by Month, 2000-2003



**Poultry Slaughter: Number, Live Weight, and Average Live Weight by Type,  
United States, October 2003<sup>1</sup>**

Commodity	Oct 2002	Sep 2003	Oct 2003	Percent of	
				Oct 2002	Sep 2003
	<i>1,000 Head</i>	<i>1,000 Head</i>	<i>1,000 Head</i>	<i>Percent</i>	<i>Percent</i>
<b>Number Slaughtered</b>					
Chickens					
Young	773,084	729,180	777,869	101	107
Mature	15,373	11,035	12,293	80	111
Light	8,390	5,037	6,022	72	120
Heavy	6,983	5,998	6,271	90	105
Total	788,457	740,215	790,162	100	107
Turkeys					
Young	24,772	22,184	25,129	101	113
Old	278	286	259	93	91
Total	25,050	22,470	25,388	101	113
Ducks	2,135	2,037	2,241	105	110
	<i>1,000 pounds</i>	<i>1,000 pounds</i>	<i>1,000 pounds</i>	<i>Percent</i>	<i>Percent</i>
<b>Live Weight</b>					
Chickens					
Young	3,999,930	3,791,269	4,096,766	102	108
Mature	83,237	65,130	70,681	85	109
Light	28,010	17,261	20,624	74	119
Heavy	55,227	47,869	50,057	91	105
Total	4,083,167	3,856,399	4,167,447	102	108
Turkeys					
Young	662,011	583,788	662,128	100	113
Old	7,483	7,889	6,849	92	87
Total	669,494	591,677	668,977	100	113
Ducks	14,363	13,600	15,226	106	112
Other Poultry	2,224	1,321	1,501	67	114
Total Poultry	4,769,248	4,462,997	4,853,151	102	109
	<i>Pounds</i>	<i>Pounds</i>	<i>Pounds</i>	<i>Percent</i>	<i>Percent</i>
<b>Average Live Weight</b>					
Chickens					
Young	5.17	5.20	5.27	102	101
Mature	5.41	5.90	5.75	106	97
Light	3.34	3.43	3.42	102	100
Heavy	7.91	7.98	7.98	101	100
Total	5.18	5.21	5.27	102	101
Turkeys					
Young	26.72	26.31	26.35	99	100
Old	26.93	27.63	26.41	98	96
Total	26.73	26.33	26.35	99	100
Ducks	6.73	6.68	6.79	101	102

See footnote(s) at end of table.

--continued

**Poultry Slaughter: Number, Live Weight, and Average Live Weight by Type,  
United States, October 2003 <sup>1</sup> (continued)**

Commodity	January to Date			Percent of	
	2001	2002	2003	2001	2002
	<i>1,000 Head</i>	<i>1,000 Head</i>	<i>1,000 Head</i>	<i>Percent</i>	<i>Percent</i>
Number Slaughtered					
Chickens					
Young	7,087,811	7,236,312	7,176,599	101	99
Mature	134,687	144,905	126,729	94	87
Light	76,612	83,287	66,356	87	80
Heavy	58,075	61,618	60,373	104	98
Total	7,222,498	7,381,217	7,303,328	101	99
Turkeys					
Young	222,779	223,576	221,690	100	99
Old	1,979	2,084	2,617	132	126
Total	224,758	225,660	224,307	100	99
Ducks	22,216	20,103	20,215	91	101
	<i>1,000 pounds</i>	<i>1,000 pounds</i>	<i>1,000 pounds</i>	<i>Percent</i>	<i>Percent</i>
Live Weight					
Chickens					
Young	35,601,587	36,930,335	37,193,780	104	101
Mature	721,076	770,356	706,151	98	92
Light	262,191	283,359	227,012	87	80
Heavy	458,885	486,997	479,139	104	98
Total	36,322,663	37,700,691	37,899,931	104	101
Turkeys					
Young	5,821,604	5,987,196	5,968,590	103	100
Old	52,404	56,635	70,161	134	124
Total	5,874,008	6,043,831	6,038,751	103	100
Ducks	146,807	134,336	132,983	91	99
Other Poultry	11,660	10,754	8,785	75	82
Total Poultry	42,355,138	43,889,612	44,080,450	104	100
	<i>Pounds</i>	<i>Pounds</i>	<i>Pounds</i>	<i>Percent</i>	<i>Percent</i>
Average Live Weight					
Chickens					
Young	5.02	5.10	5.18	103	102
Mature	5.35	5.32	5.57	104	105
Light	3.42	3.40	3.42	100	101
Heavy	7.90	7.90	7.94	101	101
Total	5.03	5.11	5.19	103	102
Turkeys					
Young	26.13	26.78	26.92	103	101
Old	26.47	27.17	26.81	101	99
Total	26.13	26.78	26.92	103	101
Ducks	6.61	6.68	6.58	100	99

<sup>1</sup> Federally inspected only.

**Poultry Slaughter: Chilled and Frozen, Pounds Certified by Type,  
United States, October 2003 <sup>1</sup>**

Commodity	Oct 2002	Sep 2003	Oct 2003	Percent of	
				Oct 2002	Sep 2003
	<i>1,000 Pounds</i>	<i>1,000 Pounds</i>	<i>1,000 Pounds</i>	<i>Percent</i>	<i>Percent</i>
<b>Chilled</b>					
Chickens					
Young	2,649,642	2,506,296	2,714,325	102	108
Mature	48,775	40,019	43,179	89	108
Light	12,772	8,747	10,435	82	119
Heavy	36,003	31,272	32,744	91	105
Total	2,698,417	2,546,315	2,757,504	102	108
Turkeys					
Young	294,670	235,062	288,379	98	123
Old	3,877	4,640	4,124	106	89
Total	298,547	239,702	292,503	98	122
Ducks	3,709	6,023	6,806	183	113
Other Poultry	291	201	220	76	109
<b>Total Poultry</b>	<b>3,000,964</b>	<b>2,792,241</b>	<b>3,057,033</b>	<b>102</b>	<b>109</b>
<b>Frozen</b>					
Chickens					
Young	303,703	310,925	320,787	106	103
Mature	1,904	142	291	15	205
Light	1,590	68	35	2	51
Heavy	314	74	256	82	346
Total	305,607	311,067	321,078	105	103
Turkeys					
Young	225,591	218,517	233,830	104	107
Old	1,729	1,373	1,386	80	101
Total	227,320	219,890	235,216	103	107
Ducks	6,564	4,559	5,088	78	112
Other Poultry	1,078	610	712	66	117
<b>Total Poultry</b>	<b>540,569</b>	<b>536,126</b>	<b>562,094</b>	<b>104</b>	<b>105</b>
<b>Total Chilled and Frozen</b>					
Chickens					
Young	2,953,345	2,817,221	3,035,112	103	108
Mature	50,679	40,161	43,470	86	108
Light	14,362	8,815	10,470	73	119
Heavy	36,317	31,346	33,000	91	105
Total	3,004,024	2,857,382	3,078,582	102	108
Turkeys					
Young	520,261	453,579	522,209	100	115
Old	5,606	6,013	5,510	98	92
Total	525,867	459,592	527,719	100	115
Ducks	10,273	10,582	11,894	116	112
Other Poultry	1,369	811	932	68	115
<b>Total Poultry</b>	<b>3,541,533</b>	<b>3,328,367</b>	<b>3,619,127</b>	<b>102</b>	<b>109</b>

See footnote(s) at end of table.

--continued

**Poultry Slaughter: Chilled and Frozen, Pounds Certified by Type,  
United States, October 2003 <sup>1</sup> (continued)**

Commodity	January to Date			Percent of	
	2001	2002	2003	2001	2002
	<i>1,000 Pounds</i>	<i>1,000 Pounds</i>	<i>1,000 Pounds</i>	<i>Percent</i>	<i>Percent</i>
<b>Chilled</b>					
Chickens					
Young	24,012,075	24,649,484	24,739,553	103	100
Mature	422,693	447,858	421,766	100	94
Light	124,823	132,547	109,566	88	83
Heavy	297,870	315,311	312,200	105	99
Total	24,434,768	25,097,342	25,161,319	103	100
Turkeys					
Young	2,220,959	2,391,702	2,456,759	111	103
Old	31,119	34,390	44,627	143	130
Total	2,252,078	2,426,092	2,501,386	111	103
Ducks	40,461	35,043	38,698	96	110
Other Poultry	2,663	2,285	2,062	77	90
<b>Total Poultry</b>	<b>26,729,970</b>	<b>27,560,762</b>	<b>27,703,465</b>	<b>104</b>	<b>101</b>
<b>Frozen</b>					
Chickens					
Young	2,288,220	2,607,369	2,758,247	121	106
Mature	12,875	16,145	7,624	59	47
Light	10,728	13,110	5,477	51	42
Heavy	2,147	3,035	2,147	100	71
Total	2,301,095	2,623,514	2,765,871	120	105
Turkeys					
Young	2,387,824	2,322,201	2,242,502	94	97
Old	9,027	8,778	8,005	89	91
Total	2,396,851	2,330,979	2,250,507	94	97
Ducks	64,543	62,945	58,580	91	93
Other Poultry	4,406	4,313	3,361	76	78
<b>Total Poultry</b>	<b>4,766,895</b>	<b>5,021,751</b>	<b>5,078,319</b>	<b>107</b>	<b>101</b>
<b>Total Chilled and Frozen</b>					
Chickens					
Young	26,300,295	27,256,853	27,497,800	105	101
Mature	435,568	464,003	429,390	99	93
Light	135,551	145,657	115,043	85	79
Heavy	300,017	318,346	314,347	105	99
Total	26,735,863	27,720,856	27,927,190	104	101
Turkeys					
Young	4,608,783	4,713,903	4,699,261	102	100
Old	40,146	43,168	52,632	131	122
Total	4,648,929	4,757,071	4,751,893	102	100
Ducks	105,004	97,988	97,278	93	99
Other Poultry	7,069	6,598	5,423	77	82
<b>Total Poultry</b>	<b>31,496,865</b>	<b>32,582,513</b>	<b>32,781,784</b>	<b>104</b>	<b>101</b>

<sup>1</sup> Ready-to-cook weights.

**Poultry Slaughter: Ante-Mortem Condemnations by Type,  
United States, October 2003 <sup>1</sup>**

Commodity	Oct 2002	Sep 2003	Oct 2003	Percent of		January to Date		Percent of 2002
				Oct 2002	Sep 2003	2002	2003	
				<i>1,000 Pounds</i>	<i>1,000 Pounds</i>	<i>1,000 Pounds</i>	<i>Percent</i>	
Live Weight								
Chickens								
Young	13,844	12,454	13,488	97	108	152,124	145,302	96
Mature	1,181	751	778	66	104	15,401	11,530	75
Light	497	273	386	78	141	6,867	5,399	79
Heavy	684	478	392	57	82	8,534	6,131	72
Total	15,025	13,205	14,266	95	108	167,525	156,832	94
Turkeys								
Young	1,802	1,758	2,588	144	147	19,478	22,741	117
Old	57	89	52	91	58	564	1,158	205
Total	1,859	1,847	2,640	142	143	20,042	23,899	119
Ducks	23	33	30	130	91	288	290	101
Other Poultry	14	4	5	36	125	53	25	47
Total Poultry	16,921	15,089	16,941	100	112	187,908	181,046	96
	<i>Percent</i>	<i>Percent</i>	<i>Percent</i>	<i>Percent</i>	<i>Percent</i>	<i>Percent</i>	<i>Percent</i>	<i>Percent</i>
Percent of Total Weight Condemned <sup>2</sup>								
Chickens								
Young	0.35	0.33	0.33	94	100	0.41	0.39	95
Mature	1.42	1.15	1.10	77	96	2.00	1.64	82
Light	1.78	1.58	1.87	105	118	2.42	2.38	98
Heavy	1.24	1.00	0.78	63	78	1.75	1.29	74
Total	0.37	0.34	0.34	92	100	0.44	0.41	93
Turkeys								
Young	0.27	0.30	0.39	144	130	0.33	0.38	115
Old	0.76	1.13	0.75	99	66	1.00	1.65	165
Total	0.28	0.31	0.39	139	126	0.33	0.40	121
Ducks	0.16	0.24	0.20	125	83	0.21	0.22	105
Other Poultry	0.63	0.30	0.34	54	113	0.50	0.31	62
Total Poultry	0.35	0.34	0.35	100	103	0.43	0.41	95

<sup>1</sup> Federally inspected only.

<sup>2</sup> Pounds condemned as a percent of live weight pounds inspected.



**Poultry Slaughter: Post-Mortem Condemnations by Type,  
United States, October 2003 <sup>1</sup>**

Commodity	Oct 2002	Sep 2003	Oct 2003	Percent of		January to Date		Percent of 2002
				Oct 2002	Sep 2003	2002	2003	
				<i>1,000 Pounds</i>	<i>1,000 Pounds</i>	<i>1,000 Pounds</i>	<i>Percent</i>	
N.Y. Dressed Weight								
Chickens								
Young	30,750	28,513	31,334	102	110	324,562	306,699	94
Mature	4,653	2,974	3,383	73	114	39,799	36,467	92
Light	2,254	1,462	1,681	75	115	20,334	19,492	96
Heavy	2,399	1,512	1,702	71	113	19,465	16,975	87
Total	35,403	31,487	34,717	98	110	364,361	343,166	94
Turkeys								
Young	12,053	11,087	11,035	92	100	110,781	105,265	95
Old	363	394	323	89	82	3,428	4,253	124
Total	12,416	11,481	11,358	91	99	114,209	109,518	96
Ducks	269	279	320	119	115	2,467	2,876	117
Other Poultry	31	15	11	35	73	128	120	94
Total Poultry	48,119	43,262	46,406	96	107	481,165	455,680	95
	<i>Percent</i>	<i>Percent</i>	<i>Percent</i>	<i>Percent</i>	<i>Percent</i>	<i>Percent</i>	<i>Percent</i>	<i>Percent</i>
Percent of Total Weight Condemned <sup>2</sup>								
Chickens								
Young	0.85	0.84	0.85	100	101	0.98	0.92	94
Mature	6.21	5.07	5.32	86	105	5.74	5.74	100
Light	8.94	9.41	9.06	101	96	7.97	9.54	120
Heavy	4.83	3.51	3.78	78	108	4.44	3.94	89
Total	0.96	0.91	0.93	97	102	1.07	1.01	94
Turkeys								
Young	2.02	2.11	1.85	92	88	2.06	1.96	95
Old	5.40	5.54	5.23	97	94	6.73	6.74	100
Total	2.06	2.16	1.89	92	88	2.10	2.02	96
Ducks	2.08	2.28	2.33	112	102	2.04	2.40	118
Other Poultry	1.51	1.18	0.88	58	75	1.34	1.55	116
Total Poultry	1.12	1.08	1.06	95	98	1.22	1.15	94

<sup>1</sup> Federally inspected only.

<sup>2</sup> Pounds condemned as a percent of N.Y. dressed weight of quantity inspected.

**Young Chickens Slaughtered: Number, Live Weight, and Average Live Weight,  
by State and United States, October 2003**

State	Number Slaughtered		Live Weight		Average Live Weight	
	September	October	September	October	September	October
	<i>1,000 Head</i>	<i>1,000 Head</i>	<i>1,000 Pounds</i>	<i>1,000 Pounds</i>	<i>Pounds</i>	<i>Pounds</i>
AL	86,747	92,141	445,857	482,955	5.14	5.24
AR	98,972	106,709	500,729	538,025	5.06	5.04
CA	*	*	*	*	*	*
DE	23,332	26,523	146,559	165,030	6.28	6.22
FL	10,345	10,567	56,226	58,787	5.43	5.56
GA	108,755	114,255	543,988	586,012	5.00	5.13
KY	17,820	20,142	102,232	116,956	5.74	5.81
LA	14,850	16,455	76,182	84,775	5.13	5.15
MD	14,832	15,776	72,526	79,284	4.89	5.03
MS	65,673	70,736	344,256	377,408	5.24	5.34
MO	34,388	36,344	156,436	170,170	4.55	4.68
NJ	*	*	*	*	*	*
NY	*	*	*	*	*	*
NC	58,965	63,250	357,467	387,857	6.06	6.13
OH	3,658	3,761	19,271	20,143	5.27	5.36
PA	9,582	10,015	50,616	54,718	5.28	5.46
SC	20,968	21,862	121,645	129,888	5.80	5.94
TN	18,073	19,438	93,487	102,625	5.17	5.28
TX	54,223	58,293	264,294	287,918	4.87	4.94
VA	27,284	29,878	137,074	151,634	5.02	5.08
WA	4,707	5,086	25,136	26,795	5.34	5.27
Oth Sts	56,006	56,638	277,288	275,786	4.95	4.87
US	729,180	777,869	3,791,269	4,096,766	5.20	5.27

\* Included in "Other States" to avoid disclosing individual operations.

**Young Chickens Slaughtered: Pounds Certified and Post-Mortem Condemnations  
by State and United States, October 2003**

State	Total Chilled and Frozen Pounds Certified <sup>1</sup>		Post-Mortem Condemnations			
			N.Y. Dressed Weight		Percent <sup>2</sup>	
	September	October	September	October	September	October
	<i>1,000 Pounds</i>	<i>1,000 Pounds</i>	<i>1,000 Pounds</i>	<i>1,000 Pounds</i>	<i>Percent</i>	<i>Percent</i>
AL	326,436	361,705	3,679	3,475	0.92	0.80
AR	365,535	391,591	3,146	3,554	0.70	0.73
CA	*	*	*	*	*	*
DE	106,207	117,940	2,214	2,204	1.68	1.48
FL	40,244	40,579	719	576	1.42	1.09
GA	399,271	428,568	3,028	3,825	0.62	0.73
KY	72,926	82,976	633	668	0.69	0.63
LA	56,078	62,662	270	274	0.39	0.36
MD	51,830	55,723	857	859	1.31	1.20
MS	268,043	280,956	2,391	3,279	0.77	0.97
MO	115,984	125,821	953	1,177	0.68	0.77
NJ	*	*	*	*	*	*
NY	*	*	*	*	*	*
NC	280,450	306,036	3,455	3,607	1.07	1.03
OH	14,024	14,501	289	283	1.66	1.56
PA	36,192	38,157	713	784	1.57	1.59
SC	86,251	95,897	557	651	0.51	0.56
TN	67,453	73,950	561	1,053	0.67	1.14
TX	211,343	223,419	1,597	1,711	0.67	0.66
VA	96,449	110,635	1,022	1,169	0.83	0.86
WA	18,793	19,990	288	277	1.27	1.15
Oth Sts	203,712	204,006	2,141	1,908	0.86	0.77
US	2,817,221	3,035,112	28,513	31,334	0.84	0.85

\* Included in "Other States" to avoid disclosing individual operations.

<sup>1</sup> Ready-to-cook weights.

<sup>2</sup> Pounds condemned as percent of equivalent N.Y. dressed weight of quantity inspected.

**Chickens Slaughtered: Number Condemned Post-Mortem by Cause, by Type,  
by State and United States, September 2003**

State	Tuber- culosis	Leukosis	Septicemia	Airsac- culitis	Synovitis	Tumors
	<i>Number of Head</i>	<i>Number of Head</i>	<i>Number of Head</i>	<i>Number of Head</i>	<i>Number of Head</i>	<i>Number of Head</i>
Young Birds						
AL		517	107,337	25,773	*	*
AR		1,014	140,786	54,258	*	2,145
CA		*	*	3,166	384	859
DE		752	130,149	23,600	40	*
FL		*	*	*	*	*
GA		*	88,688	36,770	*	3,791
IN		*	5,366	*	*	*
KY		*	34,642	7,252	*	*
LA		*	13,965	4,732	*	130
MD		1,458	48,953	14,513	*	4,695
MS		286	74,348	22,977	376	757
MO		977	63,989	10,485	*	*
NJ		*	*	*	*	*
NY		146	*	*	*	*
NC		606	86,173	27,853	206	15,600
OH		*	17,411	*	*	*
PA		126	18,854	8,095	*	402
SC		*	*	*	*	*
TN		84	33,073	7,434	102	384
TX		*	82,333	17,801	273	1,994
VA		176	55,815	*	*	*
WA		101	*	2,886	*	*
Oth Sts		2,079	180,610	63,799	10,566	25,074
US		8,322	1,182,492	331,394	11,947	55,831
Mature Birds						
Light		9,823	148,815	14,548	2,665	66,656
Heavy		764	72,057	3,759	303	11,360
US		10,587	220,872	18,307	2,968	78,016

See footnote(s) at end of table.

--continued

**Chickens Slaughtered: Number Condemned Post-Mortem by Cause, by Type,  
by State and United States, September 2003 (continued)**

	Bruises	Cadaver	Contam-ination	Overscald	Other	Total <sup>1</sup>
	<i>Number of Head</i>	<i>Number of Head</i>	<i>Number of Head</i>	<i>Number of Head</i>	<i>Number of Head</i>	<i>Number of Head</i>
Young Birds						
AL	4,171	22,514	19,193	5,026	72,758	263,522
AR	6,487	15,582	24,139	*	37,910	286,812
CA	519	*	2,281	*	*	123,430
DE	2,681	22,294	14,994	*	21,906	228,890
FL	923	4,293	*	3,412	11,124	70,361
GA	3,489	29,947	19,238	5,748	38,905	227,731
IN	*	*	199	*	*	*
KY	163	11,124	*	1,273	2,620	64,735
LA	408	*	*	*	1,572	29,407
MD	*	16,041	*	2,276	12,004	123,276
MS	3,607	21,468	18,928	1,055	44,875	188,677
MO	1,541	9,739	12,710	1,034	30,526	133,631
NJ	*	*	*	2	*	*
NY	885	*	3,832	380	*	*
NC	4,047	27,004	21,140	5,368	65,343	253,340
OH	*	964	*	*	*	32,152
PA	953	2,686	4,684	203	*	47,495
SC	703	*	*	*	*	50,307
TN	708	7,977	3,873	1,437	8,708	63,780
TX	1,044	7,073	6,886	*	7,330	126,270
VA	1,778	11,413	*	*	13,475	118,901
WA	*	*	*	*	6,522	*
Oth Sts	5,003	26,552	70,276	25,114	72,657	155,986
US	39,110	236,671	222,373	52,328	448,235	2,588,703
Mature Birds						
Light	7,598	18,204	121,312	1,610	39,518	430,749
Heavy	2,993	19,969	22,312	2,031	63,775	199,323
US	10,591	38,173	143,624	3,641	103,293	630,072

\* Included in "Other States" to avoid disclosing individual operations.

<sup>1</sup> The sum of the individual diseases does not add across to the total for "Other States".

**Chickens Slaughtered: Number Condemned Post-Mortem by Cause, by Type,  
by State and United States, October 2003**

State	Tuber- culosis	Leukosis	Septicemia	Airsac- culitis	Synovitis	Tumors
	<i>Number of Head</i>	<i>Number of Head</i>	<i>Number of Head</i>	<i>Number of Head</i>	<i>Number of Head</i>	<i>Number of Head</i>
Young Birds						
AL		675	106,900	29,874	*	*
AR		*	158,857	66,452	*	2,442
CA		*	*	3,679	345	674
DE		1,076	133,885	33,200	*	*
FL		94	*	*	*	*
GA		344	86,798	43,442	519	4,008
IN		*	5,811	*	*	*
KY		*	35,126	7,835	16	*
LA		*	13,499	3,620	59	151
MD		*	49,761	21,406	*	*
MS		*	72,088	20,563	492	669
MO		3,284	87,265	13,480	787	*
NJ		*	*	*	*	*
NY		140	*	*	*	*
NC		1,024	93,724	38,342	*	*
OH		104	17,783	2,224	29	*
PA		99	18,810	9,930	98	494
SC		*	14,401	*	*	*
TN		125	39,324	8,806	*	374
TX		*	78,494	19,308	295	2,220
VA		*	55,125	*	*	*
WA		65	*	*	*	*
Oth Sts		7,894	175,657	58,984	8,639	47,838
US		14,924	1,243,308	381,145	11,279	58,870
Mature Birds						
Light		13,648	175,763	14,996	5,298	78,919
Heavy	2	777	73,991	4,249	315	10,240
US	2	14,425	249,754	19,245	5,613	89,159

See footnote(s) at end of table.

--continued

**Chickens Slaughtered: Number Condemned Post-Mortem by Cause, by Type,  
by State and United States, October 2003 (continued)**

	Bruises	Cadaver	Contam- ination	Overscald	Other	Total <sup>1</sup>
	<i>Number of Head</i>	<i>Number of Head</i>	<i>Number of Head</i>	<i>Number of Head</i>	<i>Number of Head</i>	<i>Number of Head</i>
Young Birds						
AL	3,651	24,426	18,929	6,269	79,386	276,186
AR	6,957	18,272	27,496	3,112	38,709	327,027
CA	*	*	2,271	*	*	113,500
DE	2,817	17,058	12,012	3,645	24,862	235,405
FL	960	*	*	498	*	53,041
GA	3,555	40,171	19,129	8,162	50,573	256,701
IN	124	*	246	*	*	*
KY	182	10,363	*	*	*	64,028
LA	328	2,760	*	*	1,194	27,302
MD	*	14,374	*	*	12,559	127,803
MS	3,438	21,465	*	493	42,636	184,795
MO	1,352	8,871	13,209	*	28,751	160,050
NJ	*	*	*	*	*	*
NY	729	*	3,816	232	*	*
NC	4,136	28,203	25,926	6,675	85,060	301,189
OH	*	*	*	*	*	36,483
PA	1,000	3,032	4,902	*	*	51,454
SC	598	6,173	1,545	*	4,256	41,056
TN	1,056	10,578	4,320	*	13,774	79,003
TX	1,105	*	7,293	466	8,209	127,526
VA	1,580	13,525	*	*	16,806	133,029
WA	*	705	*	52	*	22,171
Oth Sts	5,314	27,560	91,860	16,831	95,922	160,281
US	38,882	247,536	232,954	46,435	502,697	2,778,030
Mature Birds						
Light	9,280	18,608	149,732	1,986	71,155	539,385
Heavy	2,007	24,808	27,146	1,623	62,969	208,127
US	11,287	43,416	176,878	3,609	134,124	747,512

\* Included in "Other States" to avoid disclosing individual operations.

<sup>1</sup> The sum of the individual diseases does not add across to the total for "Other States".

**Young Turkeys (Mature) Slaughtered: Number, Live Weight, and Average  
Live Weight, by State and United States, October 2003**

State	Number Slaughtered		Live Weight		Average Live Weight	
	September	October	September	October	September	October
	<i>1,000 Head</i>	<i>1,000 Head</i>	<i>1,000 Pounds</i>	<i>1,000 Pounds</i>	<i>Pounds</i>	<i>Pounds</i>
AR	2,713	2,800	47,646	52,185	17.56	18.64
CA	1,604	2,271	38,706	54,910	24.14	24.18
IA	1,605	1,760	48,770	52,576	30.39	29.87
MN	3,003	3,273	81,449	86,553	27.13	26.44
MO	1,490	1,725	44,516	53,602	29.88	31.08
NC	*	3,796	*	94,226	*	24.82
OH	*	*	*	*	*	*
PA	*	*	*	*	*	*
VA	*	*	*	*	*	*
Oth Sts	11,769	9,504	322,701	268,076	27.42	28.21
US	22,184	25,129	583,788	662,128	26.31	26.35

\* Included in "Other States" to avoid disclosing individual operations.

**Young Turkeys (Mature) Slaughtered: Pounds Certified and Post-Mortem  
Condemnations, by State and United States, October 2003**

State	Total Chilled and Frozen Pounds Certified <sup>1</sup>		Post-Mortem Condemnations			
	September	October	N.Y. Dressed Weight		Percent <sup>2</sup>	
			September	October	September	October
	<i>1,000 Pounds</i>	<i>1,000 Pounds</i>	<i>1,000 Pounds</i>	<i>1,000 Pounds</i>	<i>Percent</i>	<i>Percent</i>
AR	39,419	43,455	754	707	1.76	1.51
CA	30,822	44,324	937	1,070	2.69	2.16
IA	37,870	41,795	1,031	1,123	2.35	2.37
MN	59,367	68,843	1,364	1,521	1.86	1.95
MO	34,701	42,128	1,508	1,128	3.76	2.34
NC	*	75,120	*	1,205	*	1.42
OH	*	*	*	*	*	*
PA	*	*	*	*	*	*
VA	*	*	*	*	*	*
Oth Sts	251,400	206,544	5,493	4,281	1.89	1.77
US	453,579	522,209	11,087	11,035	2.11	1.85

\* Included in "Other States" to avoid disclosing individual operations.

<sup>1</sup> Ready-to-cook weights.

<sup>2</sup> Pounds condemned as percent of equivalent N.Y. dressed weight of quantity inspected.



**Turkeys Slaughtered: Number Condemned Post-Mortem by Cause, by Type,  
by State and United States, September 2003**

State	Tuber- culosis	Leukosis	Septicemia	Airsac- culitis	Synovitis	Tumors
	<i>Number of Head</i>	<i>Number of Head</i>	<i>Number of Head</i>	<i>Number of Head</i>	<i>Number of Head</i>	<i>Number of Head</i>
Young (Mature)						
AR			6,018	*	*	*
CA		*	13,803	668	*	5
IA			5,972	1,792	*	*
MN		*	16,323	*	*	*
MO			14,885	*	*	
NC		*	3,937	*		*
OH		*	*	*	*	*
PA		*	*	*	*	
VA		*	*	*	*	*
Other States		61	35,201	12,083	5,022	58
US		61	96,139	14,543	5,022	63
Old (Breeders)						
US		545	4,592	1,126	46	83
	Bruises	Cadaver	Contam- ination	Overscald	Other	Total <sup>1</sup>
	<i>Number of Head</i>	<i>Number of Head</i>	<i>Number of Head</i>	<i>Number of Head</i>	<i>Number of Head</i>	<i>Number of Head</i>
Young (Mature)						
AR	*	2,259	*	*	*	13,254
CA	*	359	*	*	681	17,472
IA	107	*	426	*	*	11,532
MN	129	558	647	169	2,718	23,259
MO	*	*	*	*	*	19,229
NC	60	949	390	*	*	7,671
OH	*	*	*	*	*	*
PA	31	*	130	*	*	*
VA	*	*	*	*	*	*
Other States	255	3,257	3,722	2,310	12,417	54,985
US	582	7,382	5,315	2,479	15,816	147,402
Old (Breeders)						
US	13	143	122	22	1,268	7,960

\* Included in "Other States" to avoid disclosing individual operations.

<sup>1</sup> The sum of the individual diseases does not add across to the total for "Other States".

**Turkeys Slaughtered: Number Condemned Post-Mortem by Cause, by Type,  
by State and United States, October 2003**

State	Tuber- culosis	Leukosis	Septicemia	Airsac- culitis	Synovitis	Tumors
	<i>Number of Head</i>	<i>Number of Head</i>	<i>Number of Head</i>	<i>Number of Head</i>	<i>Number of Head</i>	<i>Number of Head</i>
Young (Mature)						
AR			6,181	467	*	*
CA		*	13,699	*	*	*
IA			7,469	1,547	*	*
MN		*	19,143	*	*	*
MO			12,761	*	*	*
NC		*	*	*	*	*
OH		*	*	112	*	14
PA		*	*	333	*	*
VA		*	*	*	*	*
Other States		767	42,589	8,004	5,062	65
US		767	101,842	10,463	5,062	79
Old (Breeders)						
US		2	4,426	886	7	90
	Bruises	Cadaver	Contam- ination	Overscald	Other	Total <sup>1</sup>
	<i>Number of Head</i>	<i>Number of Head</i>	<i>Number of Head</i>	<i>Number of Head</i>	<i>Number of Head</i>	<i>Number of Head</i>
Young (Mature)						
AR	12	903	*	*	*	10,205
CA	43	*	611	*	1,288	18,275
IA	103	353	465	*	*	12,685
MN	122	707	672	*	3,240	26,425
MO	*	*	331	*	*	16,249
NC	*	1,135	373	*	652	8,184
OH	*	*	*	*	*	*
PA	63	*	110	*	752	*
VA	*	*	*	*	*	*
Other States	371	3,861	2,566	2,650	9,973	57,546
US	714	6,959	5,128	2,650	15,905	149,569
Old (Breeders)						
US	22	108	153	7	1,060	6,761

\* Included in "Other States" to avoid disclosing individual operations.

<sup>1</sup> The sum of the individual diseases does not add across to the total for "Other States".

## Poultry Slaughter Estimates

**Data Sources:** Primary data for poultry slaughter estimates are obtained from the Poultry Inspection Form (FSIS 6000-21). This form is completed by inspectors of the Food Safety and Inspection Service (FSIS), USDA for all Federally Inspected (FI) plants. Over 99 percent of the total U.S. slaughter for any species is under FI. The FSIS 6000-21 forms collect number of head slaughtered daily under FI by species and class as well as condemnations and total live and dressed weights. Approximately 350 plants in the U.S. are operated under Federal Inspection.

**Revision Policy:** Revisions are generally the result of late reports received by FSIS from plants and are usually less than one-half of 1 percent of the preliminary totals. Revisions for the previous month and year-to-date totals are published in each monthly release. Final data are published in the annual summary released in April and reflect any late reports or corrections which occurred after the monthly revision were published.

**Procedures and Reliability:** Plant inspectors submit forms (FSIS 6000-21) weekly summarizing the plant's activity. When inconsistencies in the data are detected, the reports are returned to the inspectors for correction. Inspectors correct or validate the report and resubmit it. The reports cover weekly activities through Saturday night and reported data are allocated to the appropriate month as it enters the database.

A NASS computer program provides a review of current data with historical data for each plant. An edit provides checks for the detection of errors such as invalid plant information, duplication, and erroneous data. Data are summarized weekly and accumulated to monthly totals for this release.

Data for major slaughter plants with missing reports are adjusted prior to publication to assure that all plants slaughtering a significant portion of a specific class are accounted for each week. Estimates for missing weeks are made only after verifying that the plant was in operation. Adjustments are based on either the previous week's information or a week determined to be similar to the one missing. Late reports replace imputed data as they become available. While there is a varying degree of incompleteness from month to month, it has only a minimal impact on the published totals.

Poultry slaughter estimates are based on a census of operating plants and, therefore, have no sampling error. However, they may be subject to errors such as omissions, duplications, and mistakes in reporting, recording, and processing the data. These errors are minimized through strict quality controls in the edit and summarization process, and a careful review of all reported data for consistency and reasonableness.

State data are published for selected states for young chickens and young turkeys. State data are not published if less than three plants operate for a species in a State, or if one plant has 60 percent or more of the total live weight for that species. Data for all states not published are included in the "Other States" category. Also included in this category are data for published states that are confidential (denoted by an \*). Data for all states are included in the U.S. totals. For 2002, young chickens were killed in 34 states, young turkeys in 21 states.

## Definitions

**Ante-Mortem Condemnations** - Birds condemned prior to their entry into the slaughter plant.

**Certified Ready-to-Cook** - The weight of poultry certified wholesome by inspection after post-mortem condemnation pounds are removed. Ready-to-cook represents poultry meat ready for the marketing channel.

**Ducks** - Includes all ducks regardless of age and weight.

**Fryer-Roaster Turkeys** - Young immature birds, usually under 16 weeks of age. Included with young turkeys.

**Mature Chickens** - Fowl from breeder and market egg flocks and stags and cocks.

**New York Dressed Weight** - Carcass weight after only feathers and blood are removed. This weight is approximately 90% of live weight.

**Old Turkeys (Breeders)** - Fully matured birds held for egg production, usually over 15 months of age.

**Other Poultry** - Includes all other ready-to-cook products which bear the USDA Inspected for Wholesomeness legend.

**Post-Mortem Condemnations** - Carcasses or parts condemned by the inspector because of disease or mishandling and removed from the slaughter line and destroyed.

**Young Chickens** - Commercially grown broilers-fryers and other young immature birds such as roasters and capons.

**Young Turkeys (Mature)** - Young birds grown to a matured market age, about 5 months.

The next "*Poultry Slaughter*" report will be released at 8:30 a.m. ET on January 5, 2004.

The United States Department of Agriculture (USDA) prohibits discrimination in all its programs on the basis of race, color, national origin, gender, religion, age, disability, political beliefs, sexual orientation, and marital or family status. (Not all prohibited bases apply to all programs.) Persons with disabilities who require alternative means for communication of program information (braille, large print, audiotape, etc.) should contact the USDA's TARGET Center at 202-720-2600 (voice and TDD).

To file a complaint of discrimination, write USDA, Director, Office of Civil Rights, Room 326-W, Whitten Building, 1400 Independence Avenue, SW, Washington, D.C., 20250-9410, or call 202-720-5964 (voice or TDD). USDA is an equal opportunity provider and employer.

## ACCESS TO REPORTS!!

---

For your convenience, there are several ways to obtain NASS reports, data products, and services:

### INTERNET ACCESS

All NASS reports are available free of charge on the worldwide Internet. For access, connect to the Internet and go to the NASS Home Page at: <http://www.usda.gov/nass/>. Select "Today's Reports" or Publications and then Reports Calendar or Publications and then Search, by Title or Subject.

### E-MAIL SUBSCRIPTION

All NASS reports are available by subscription free of charge direct to your e-mail address. Starting with the NASS Home Page at <http://www.usda.gov/nass/>, click on **Publications**, then click on the **Subscribe by E-mail** button which takes you to the page describing e-mail delivery of reports. Finally, click on **Go to the Subscription Page** and follow the instructions.

-----

### PRINTED REPORTS OR DATA PRODUCTS

**CALL OUR TOLL-FREE ORDER DESK: 800-999-6779 (U.S. and Canada)**  
**Other areas, please call 703-605-6220      FAX: 703-605-6900**  
**(Visa, MasterCard, check, or money order acceptable for payment.)**

-----

### ASSISTANCE

For **assistance** with general agricultural statistics or further information about NASS or its products or services, contact the **Agricultural Statistics Hotline** at **800-727-9540**, 7:30 a.m. to 4:00 p.m. ET, or e-mail: [nass@nass.usda.gov](mailto:nass@nass.usda.gov).

---