



# Poultry Slaughter

---

Released September 7, 2004, by the National Agricultural Statistics Service (NASS), Agricultural Statistics Board, U.S. Department of Agriculture. For information on *Poultry Slaughter* call John Lange at 202-720-0585, office hours 7:00 a.m. to 4:30 p.m. ET.

## Ready-to-Cook Weight Down 1 Percent

Poultry certified wholesome during July 2004 (ready-to-cook weight) totaled 3.39 billion pounds, down 1 percent from the amount certified in July 2003. Updated totals for June 2004 show that 3.43 billion pounds were certified.

The preliminary total live weight of poultry inspected during July 2004 was 4.55 billion pounds, down 2 percent from a year ago. Young chickens inspected totaled 3.88 billion pounds, down 1 percent from July 2003, and mature chickens at 69.6 million pounds, were down 8 percent from the previous year. Turkey inspections totaled 585 million pounds, down 6 percent, and ducks totaled 14.3 million pounds, up 13 percent from last year.

Young chickens slaughtered during July 2004 averaged 5.22 pounds per bird, up 2 percent from July 2003. The average live weight of mature chickens was 5.72 pounds per bird, down 3 percent from a year ago. Turkeys slaughtered during July 2004 averaged 26.6 pounds per bird, up 1 percent from July 2003.

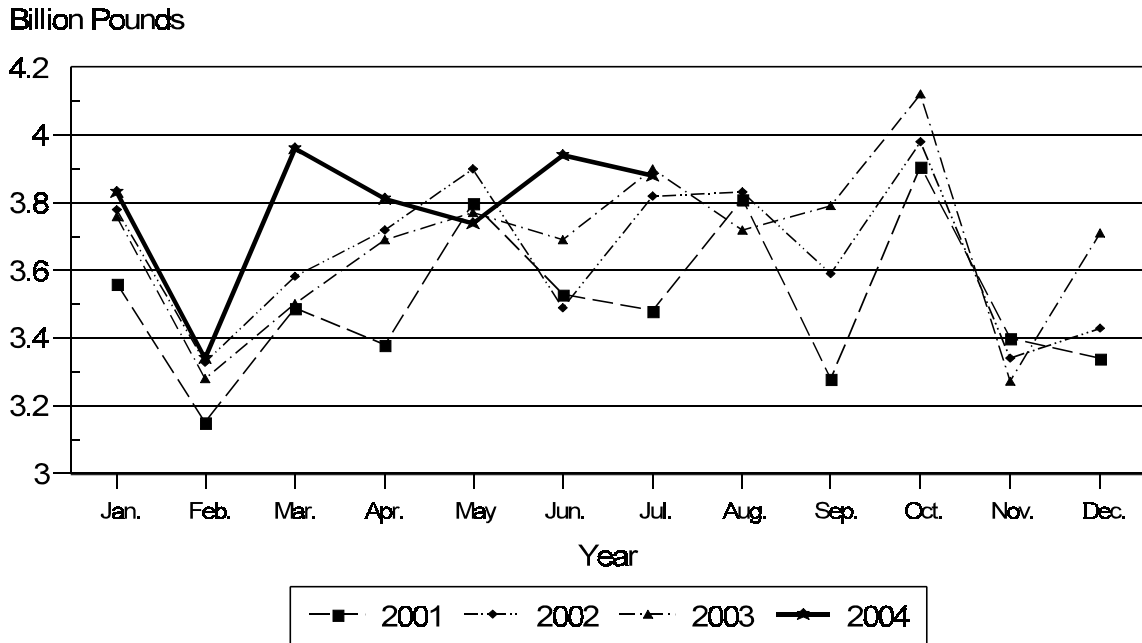
Ante-mortem condemnations during July 2004 totaled 21.8 million pounds. Condemnations were 0.48 percent of the live weight inspected, compared to 0.47 percent a year earlier. Post-mortem condemnations, at 49.7 million pounds (N.Y. dressed weight), were 1.21 percent of quantities inspected, compared with 1.07 percent a year earlier.

July 2004 contained 22 weekdays (including one holiday) and five Saturdays.  
July 2003 contained 23 weekdays (including one holiday) and four Saturdays.

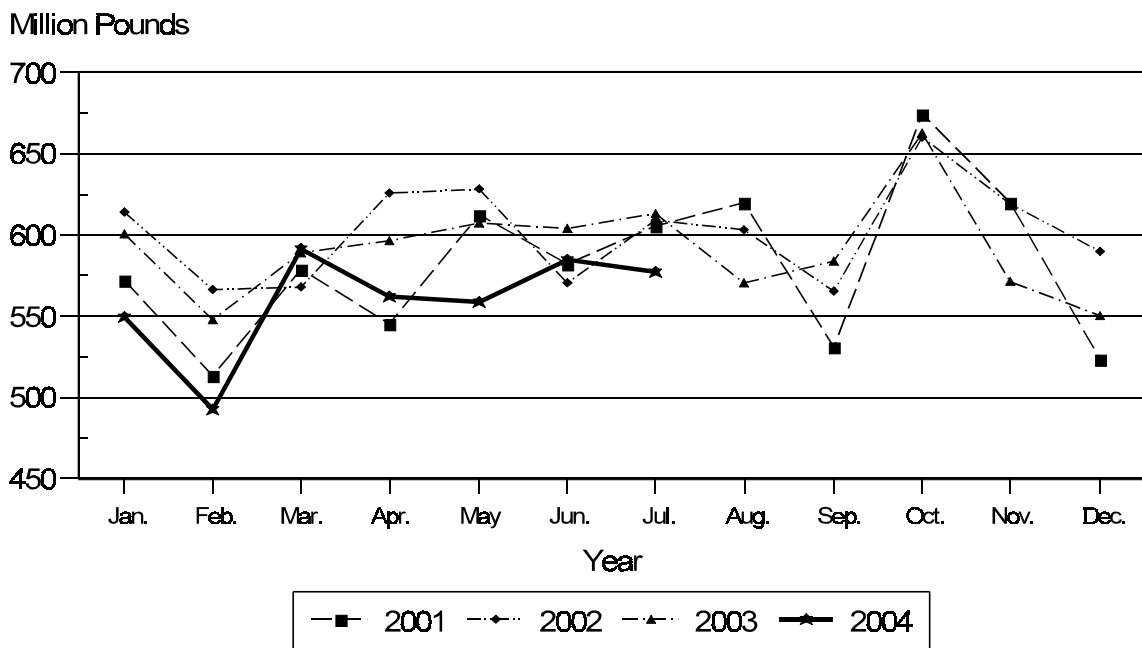
## Contents

	<b>Page</b>
Poultry Slaughter: Number, Live Weight, and Average Live Weight by Type, United States, July 2004 .....	4
Poultry Slaughter: Chilled and Frozen, Pounds Certified by Type, United States, July 2004 .....	6
Poultry Slaughter: Ante-Mortem Condemnations by Type, United States, July 2004 .....	8
Poultry Slaughter: Post-Mortem Condemnations by Type, United States, July 2004 .....	9
Young Chickens Slaughtered: Number, Live Weight, and Average Live Weight, by State and United States, July 2004 .....	10
Young Chickens Slaughtered: Pounds Certified and Post-Mortem Condemnations, by State and United States, July 2004 .....	11
Young Chickens Slaughtered: Number Condemned Post-Mortem by Cause, by Type, by State and United States, June 2004 .....	12
Young Chickens Slaughtered: Number Condemned Post-Mortem by Cause, by Type, by State and United States, July 2004 .....	14
Young Turkeys (Mature) Slaughtered: Number, Live Weight, and Average Live Weight, by State and United States, July 2004 .....	16
Young Turkeys (Mature) Slaughtered: Pounds Certified and Post-Mortem Condemnations, by State and United States, July 2004 .....	16
Young Turkeys Slaughtered: Number Condemned Post-Mortem by Cause, by Type, by State and United States, June 2004 .....	17
Young Turkeys Slaughtered: Number Condemned Post-Mortem by Cause, by Type, by State and United States, July 2004 .....	18
Reliability Statement .....	19
Definitions .....	20

## Young Chickens: Live Weight Slaughtered, by Month, 2001-2004



## Young Turkeys: Live Weight Slaughtered, by Month, 2001-2004



**Poultry Slaughter: Number, Live Weight, and Average Live Weight by Type,  
United States, July 2004 <sup>1</sup>**

Commodity	Jul 2003	Jun 2004	Jul 2004	Percent of	
				Jul 2003	Jun 2004
	<i>1,000 Head</i>	<i>1,000 Head</i>	<i>1,000 Head</i>	<i>Percent</i>	<i>Percent</i>
Number Slaughtered					
Chickens					
Young	762,876	751,634	742,483	97	99
Mature	12,803	12,403	12,172	95	98
Light	5,842	6,304	5,994	103	95
Heavy	6,961	6,099	6,178	89	101
Total	775,679	764,037	754,655	97	99
Turkeys					
Young	23,297	21,271	21,716	93	102
Old	384	218	284	74	130
Total	23,681	21,489	22,000	93	102
Ducks	1,927	2,217	2,149	112	97
	<i>1,000 pounds</i>	<i>1,000 pounds</i>	<i>1,000 pounds</i>	<i>Percent</i>	<i>Percent</i>
Live Weight					
Chickens					
Young	3,906,159	3,935,589	3,878,624	99	99
Mature	75,394	70,116	69,640	92	99
Light	20,093	21,037	19,731	98	94
Heavy	55,301	49,079	49,909	90	102
Total	3,981,553	4,005,705	3,948,264	99	99
Turkeys					
Young	613,534	584,919	577,224	94	99
Old	10,256	5,842	7,330	71	125
Total	623,790	590,761	584,554	94	99
Ducks	12,619	14,773	14,258	113	97
Other Poultry	608	414	406	67	98
Total Poultry	4,618,570	4,611,653	4,547,482	98	99
	<i>Pounds</i>	<i>Pounds</i>	<i>Pounds</i>	<i>Percent</i>	<i>Percent</i>
Average Live Weight					
Chickens					
Young	5.12	5.24	5.22	102	100
Mature	5.89	5.65	5.72	97	101
Light	3.44	3.34	3.29	96	99
Heavy	7.94	8.05	8.08	102	100
Total	5.13	5.24	5.23	102	100
Turkeys					
Young	26.33	27.50	26.58	101	97
Old	26.73	26.80	25.81	97	96
Total	26.34	27.49	26.57	101	97
Ducks	6.55	6.66	6.63	101	100

See footnote(s) at end of table.

--continued

**Poultry Slaughter: Number, Live Weight, and Average Live Weight by Type,  
United States, July 2004 <sup>1</sup> (continued)**

Commodity	January to Date			Percent of	
	2002	2003	2004	2002	2003
	<i>1,000 Head</i>	<i>1,000 Head</i>	<i>1,000 Head</i>	<i>Percent</i>	<i>Percent</i>
Number Slaughtered					
Chickens					
Young	5,018,239	4,959,912	5,077,842	101	102
Mature	100,974	91,723	81,970	81	89
Light	59,661	49,783	41,776	70	84
Heavy	41,313	41,940	40,194	97	96
Total	5,119,213	5,051,635	5,159,812	101	102
Turkeys					
Young	153,747	152,419	144,073	94	95
Old	1,232	1,733	1,449	118	84
Total	154,979	154,152	145,522	94	94
Ducks	13,950	14,043	14,911	107	106
	<i>1,000 pounds</i>	<i>1,000 pounds</i>	<i>1,000 pounds</i>	<i>Percent</i>	<i>Percent</i>
Live Weight					
Chickens					
Young	25,586,488	25,656,252	26,494,225	104	103
Mature	529,757	501,868	457,699	86	91
Light	203,937	169,870	139,716	69	82
Heavy	325,820	331,998	317,983	98	96
Total	26,116,245	26,158,120	26,951,924	103	103
Turkeys					
Young	4,164,276	4,154,398	3,914,453	94	94
Old	33,814	46,841	38,858	115	83
Total	4,198,090	4,201,239	3,953,311	94	94
Ducks	93,419	91,729	99,760	107	109
Other Poultry	5,429	5,209	2,379	44	46
Total Poultry	30,413,183	30,456,297	31,007,374	102	102
	<i>Pounds</i>	<i>Pounds</i>	<i>Pounds</i>	<i>Percent</i>	<i>Percent</i>
Average Live Weight					
Chickens					
Young	5.10	5.17	5.22	102	101
Mature	5.25	5.47	5.58	106	102
Light	3.42	3.41	3.34	98	98
Heavy	7.89	7.92	7.91	100	100
Total	5.10	5.18	5.23	103	101
Turkeys					
Young	27.09	27.26	27.23	101	100
Old	27.44	27.02	26.82	98	99
Total	27.09	27.25	27.23	101	100
Ducks	6.70	6.53	6.69	100	102

<sup>1</sup> Federally inspected only.

**Poultry Slaughter: Chilled and Frozen, Pounds Certified by Type,  
United States, July 2004 <sup>1</sup>**

Commodity	Jul 2003	Jun 2004	Jul 2004	Percent of	
				Jul 2003	Jun 2004
	<i>1,000 Pounds</i>	<i>1,000 Pounds</i>	<i>1,000 Pounds</i>	<i>Percent</i>	<i>Percent</i>
<b>Chilled</b>					
Chickens					
Young	2,610,249	2,640,944	2,624,201	101	99
Mature	46,195	43,198	42,734	93	99
Light	10,179	10,734	9,961	98	93
Heavy	36,016	32,464	32,773	91	101
Total	2,656,444	2,684,142	2,666,935	100	99
Turkeys					
Young	243,188	244,368	238,551	98	98
Old	6,987	3,471	4,700	67	135
Total	250,175	247,839	243,251	97	98
Ducks	3,045	6,140	5,608	184	91
Other Poultry	283	221	234	83	106
<b>Total Poultry</b>	<b>2,909,947</b>	<b>2,938,342</b>	<b>2,916,028</b>	<b>100</b>	<b>99</b>
<b>Frozen</b>					
Chickens					
Young	277,828	262,714	252,817	91	96
Mature	304	547	176	58	32
Light	42	56	23	55	41
Heavy	262	491	153	58	31
Total	278,132	263,261	252,993	91	96
Turkeys					
Young	242,481	218,440	216,891	89	99
Old	887	842	835	94	99
Total	243,368	219,282	217,726	89	99
Ducks	6,103	4,560	4,620	76	101
Other Poultry	104	48	34	33	71
<b>Total Poultry</b>	<b>527,707</b>	<b>487,151</b>	<b>475,373</b>	<b>90</b>	<b>98</b>
<b>Total Chilled and Frozen</b>					
Chickens					
Young	2,888,077	2,903,658	2,877,018	100	99
Mature	46,499	43,745	42,910	92	98
Light	10,221	10,790	9,984	98	93
Heavy	36,278	32,955	32,926	91	100
Total	2,934,576	2,947,403	2,919,928	100	99
Turkeys					
Young	485,669	462,808	455,442	94	98
Old	7,874	4,313	5,535	70	128
Total	493,543	467,121	460,977	93	99
Ducks	9,148	10,700	10,228	112	96
Other Poultry	387	269	268	69	100
<b>Total Poultry</b>	<b>3,437,654</b>	<b>3,425,493</b>	<b>3,391,401</b>	<b>99</b>	<b>99</b>

See footnote(s) at end of table.

--continued

**Poultry Slaughter: Chilled and Frozen, Pounds Certified by Type,  
United States, July 2004 <sup>1</sup> (continued)**

Commodity	January to Date			Percent of	
	2002	2003	2004	2002	2003
	<i>1,000 Pounds</i>	<i>1,000 Pounds</i>	<i>1,000 Pounds</i>	<i>Percent</i>	<i>Percent</i>
<b>Chilled</b>					
Chickens					
Young	17,122,695	17,099,771	17,862,242	104	104
Mature	306,851	297,522	282,235	92	95
Light	96,103	80,787	70,366	73	87
Heavy	210,748	216,735	211,869	101	98
Total	17,429,546	17,397,293	18,144,477	104	104
Turkeys					
Young	1,611,800	1,705,886	1,659,632	103	97
Old	21,664	30,939	24,289	112	79
Total	1,633,464	1,736,825	1,683,921	103	97
Ducks	24,870	22,506	44,781	180	199
Other Poultry	1,490	1,489	1,311	88	88
<b>Total Poultry</b>	<b>19,089,370</b>	<b>19,158,113</b>	<b>19,874,490</b>	<b>104</b>	<b>104</b>
<b>Frozen</b>					
Chickens					
Young	1,756,072	1,849,428	1,713,813	98	93
Mature	10,882	6,936	2,443	22	35
Light	8,896	5,284	353	4	7
Heavy	1,986	1,652	2,090	105	127
Total	1,766,954	1,856,364	1,716,256	97	92
Turkeys					
Young	1,667,174	1,571,170	1,439,908	86	92
Old	4,083	3,815	4,455	109	117
Total	1,671,257	1,574,985	1,444,363	86	92
Ducks	43,768	43,264	30,465	70	70
Other Poultry	1,860	1,725	259	14	15
<b>Total Poultry</b>	<b>3,483,839</b>	<b>3,476,338</b>	<b>3,191,343</b>	<b>92</b>	<b>92</b>
<b>Total Chilled and Frozen</b>					
Chickens					
Young	18,878,767	18,949,199	19,576,055	104	103
Mature	317,733	304,458	284,678	90	94
Light	104,999	86,071	70,719	67	82
Heavy	212,734	218,387	213,959	101	98
Total	19,196,500	19,253,657	19,860,733	103	103
Turkeys					
Young	3,278,974	3,277,056	3,099,540	95	95
Old	25,747	34,754	28,744	112	83
Total	3,304,721	3,311,810	3,128,284	95	94
Ducks	68,638	65,770	75,246	110	114
Other Poultry	3,350	3,214	1,570	47	49
<b>Total Poultry</b>	<b>22,573,209</b>	<b>22,634,451</b>	<b>23,065,833</b>	<b>102</b>	<b>102</b>

<sup>1</sup> Ready-to-cook weights.

**Poultry Slaughter: Ante-Mortem Condemnations by Type,  
United States, July 2004 <sup>1</sup>**

Commodity	Jul 2003	Jun 2004	Jul 2004	Percent of		January to Date		Percent of 2003
				Jul 2003	Jun 2004	2003	2004	
				<i>1,000 Pounds</i>	<i>1,000 Pounds</i>	<i>1,000 Pounds</i>	<i>Percent</i>	
Live Weight								
Chickens								
Young	17,316	16,220	18,081	104	111	102,929	113,239	110
Mature	1,656	1,485	1,575	95	106	8,282	7,366	89
Light	638	536	574	90	107	4,096	2,874	70
Heavy	1,018	949	1,001	98	105	4,186	4,492	107
Total	18,972	17,705	19,656	104	111	111,211	120,605	108
Turkeys								
Young	2,582	1,737	2,045	79	118	16,094	14,293	89
Old	164	41	63	38	154	922	314	34
Total	2,746	1,778	2,108	77	119	17,016	14,607	86
Ducks	28	121	30	107	25	194	287	148
Other Poultry	2	1	1	50	100	18	3	17
Total Poultry	21,748	19,605	21,795	100	111	128,439	135,502	105
	<i>Percent</i>	<i>Percent</i>	<i>Percent</i>	<i>Percent</i>	<i>Percent</i>	<i>Percent</i>	<i>Percent</i>	<i>Percent</i>
Percent of Total Weight Condemned <sup>2</sup>								
Chickens								
Young	0.44	0.41	0.47	107	115	0.40	0.41	103
Mature	2.20	2.12	2.26	103	107	1.65	1.61	98
Light	3.18	2.55	2.91	92	114	2.41	2.06	85
Heavy	1.84	1.93	2.01	109	104	1.26	1.41	112
Total	0.48	0.44	0.50	104	114	0.43	0.43	100
Turkeys								
Young	0.42	0.30	0.35	83	117	0.39	0.37	95
Old	1.60	0.70	0.85	53	121	1.97	0.81	41
Total	0.44	0.30	0.36	82	120	0.40	0.37	93
Ducks	0.22	0.82	0.21	95	26	0.21	0.29	138
Other Poultry	0.38	0.13	0.19	50	146	0.33	0.15	45
Total Poultry	0.47	0.43	0.48	102	112	0.42	0.43	102

<sup>1</sup> Federally inspected only.

<sup>2</sup> Pounds condemned as a percent of live weight pounds inspected.



**Poultry Slaughter: Post-Mortem Condemnations by Type,  
United States, July 2004 <sup>1</sup>**

Commodity	Jul 2003	Jun 2004	Jul 2004	Percent of		January to Date		Percent of 2003
				Jul 2003	Jun 2004	2003	2004	
				<i>1,000 Pounds</i>	<i>1,000 Pounds</i>	<i>1,000 Pounds</i>	<i>Percent</i>	
N.Y. Dressed Weight								
Chickens								
Young	30,104	38,438	36,223	120	94	218,509	257,234	118
Mature	3,627	2,856	2,721	75	95	27,151	21,266	78
Light	1,658	1,412	1,167	70	83	14,915	10,558	71
Heavy	1,969	1,444	1,554	79	108	12,236	10,708	88
Total	33,731	41,294	38,944	115	94	245,660	278,500	113
Turkeys								
Young	9,942	10,102	10,018	101	99	73,321	69,254	94
Old	539	378	417	77	110	3,110	2,583	83
Total	10,481	10,480	10,435	100	100	76,431	71,837	94
Ducks	256	327	308	120	94	2,031	2,388	118
Other Poultry	7	6	7	100	117	89	40	45
Total Poultry	44,475	52,107	49,694	112	95	324,211	352,765	109
	<i>Percent</i>	<i>Percent</i>	<i>Percent</i>	<i>Percent</i>	<i>Percent</i>	<i>Percent</i>	<i>Percent</i>	<i>Percent</i>
Percent of Total Weight Condemned <sup>2</sup>								
Chickens								
Young	0.86	1.09	1.04	121	95	0.95	1.06	112
Mature	5.35	4.53	4.34	81	96	6.01	5.16	86
Light	9.17	7.46	6.57	72	88	9.76	8.40	86
Heavy	3.96	3.27	3.46	87	106	4.09	3.74	91
Total	0.94	1.15	1.10	117	96	1.04	1.13	109
Turkeys								
Young	1.80	1.92	1.93	107	101	1.96	1.97	101
Old	5.85	7.19	6.33	108	88	7.38	7.39	100
Total	1.87	1.97	1.98	106	101	2.02	2.02	100
Ducks	2.25	2.46	2.40	107	98	2.46	2.66	108
Other Poultry	1.25	1.64	1.89	151	115	1.91	1.97	103
Total Poultry	1.07	1.26	1.21	113	96	1.18	1.25	106

<sup>1</sup> Federally inspected only.

<sup>2</sup> Pounds condemned as a percent of N.Y. dressed weight of quantity inspected.

**Young Chickens Slaughtered: Number, Live Weight, and Average Live Weight,  
by State and United States, July 2004**

State	Number Slaughtered		Live Weight		Average Live Weight	
	June	July	June	July	June	July
	<i>1,000 Head</i>	<i>1,000 Head</i>	<i>1,000 Pounds</i>	<i>1,000 Pounds</i>	<i>Pounds</i>	<i>Pounds</i>
AL	93,387	89,837	477,149	464,972	5.11	5.18
AR	101,290	100,513	513,419	503,683	5.07	5.01
CA	*	*	*	*	*	*
DE	24,308	24,290	157,070	152,418	6.46	6.27
FL	*	*	*	*	*	*
GA	105,823	106,733	529,198	531,826	5.00	4.98
KY	23,466	23,253	123,894	123,256	5.28	5.30
LA	15,938	16,109	85,898	84,386	5.39	5.24
MD	12,517	12,428	63,487	62,670	5.07	5.04
MS	67,428	66,647	357,845	359,428	5.31	5.39
MO	36,311	34,860	164,587	163,965	4.53	4.70
NJ	*	*	*	*	*	*
NY	*	*	*	*	*	*
NC	58,030	57,333	365,056	357,684	6.29	6.24
OH	3,341	3,479	17,362	18,158	5.20	5.22
PA	10,445	10,014	52,780	52,060	5.05	5.20
SC	21,813	22,007	125,747	124,731	5.76	5.67
TN	19,879	20,330	102,590	98,755	5.16	4.86
TX	56,578	56,286	294,162	291,215	5.20	5.17
VA	30,363	28,617	151,055	140,567	4.98	4.91
WA	*	*	*	*	*	*
Oth Sts	70,717	69,747	354,290	348,850	5.01	5.00
US	751,634	742,483	3,935,589	3,878,624	5.24	5.22

\* Included in "Other States" to avoid disclosing individual operations.

**Young Chickens Slaughtered: Pounds Certified and Post-Mortem Condemnations  
by State and United States, July 2004**

State	Total Chilled and Frozen Pounds Certified <sup>1</sup>		Post-Mortem Condemnations			
			N.Y. Dressed Weight		Percent <sup>2</sup>	
	June	July	June	July	June	July
	<i>1,000 Pounds</i>	<i>1,000 Pounds</i>	<i>1,000 Pounds</i>	<i>1,000 Pounds</i>	<i>Percent</i>	<i>Percent</i>
AL	348,906	343,546	4,850	4,737	1.13	1.13
AR	369,054	361,912	5,323	4,812	1.15	1.06
CA	*	*	*	*	*	*
DE	112,747	110,401	2,040	1,819	1.44	1.33
FL	*	*	*	*	*	*
GA	383,138	388,521	4,525	4,195	0.95	0.88
KY	91,961	91,607	1,095	697	0.98	0.63
LA	63,157	62,526	354	405	0.46	0.53
MD	46,457	45,239	602	591	1.05	1.05
MS	274,808	271,096	2,601	2,651	0.81	0.82
MO	120,244	122,433	1,130	1,256	0.76	0.85
NJ	*	*	*	*	*	*
NY	*	*	*	*	*	*
NC	277,193	277,256	5,583	4,032	1.70	1.25
OH	12,555	13,540	225	204	1.44	1.25
PA	37,036	36,045	817	1,180	1.72	2.52
SC	94,230	93,834	779	1,281	0.69	1.14
TN	77,893	76,470	743	765	0.81	0.86
TX	227,671	224,667	2,654	3,046	1.00	1.16
VA	111,787	105,285	1,616	1,144	1.19	0.90
WA	*	*	*	*	*	*
Oth Sts	254,821	252,640	3,501	3,408	1.10	1.09
US	2,903,658	2,877,018	38,438	36,223	1.09	1.04

\* Included in "Other States" to avoid disclosing individual operations.

<sup>1</sup> Ready-to-cook weights.

<sup>2</sup> Pounds condemned as percent of equivalent N.Y. dressed weight of quantity inspected.

**Chickens Slaughtered: Number Condemned Post-Mortem by Cause, by Type,  
by State and United States, June 2004**

State	Tuber- culosis	Leukosis	Septicemia	Airsac- culitis	Synovitis	Tumors
	<i>Number of Head</i>	<i>Number of Head</i>	<i>Number of Head</i>	<i>Number of Head</i>	<i>Number of Head</i>	<i>Number of Head</i>
Young Birds						
AL		400	125,551	66,863	1,379	2,834
AR		*	162,590	58,462	*	1,599
CA		*	*	3,894	215	923
DE		*	99,345	26,716	*	*
FL		*	*	*	*	*
GA		*	83,618	33,572	*	3,372
IN		*	4,985	*	*	*
KY		*	38,828	9,561	*	1,728
LA		*	19,707	5,007	*	166
MD		*	38,370	10,070	39	*
MS		416	68,015	21,149	773	715
MO		1,259	67,811	11,311	*	*
NJ		*	*	*	*	*
NY		*	*	*	*	*
NC		488	107,274	48,425	*	*
OH		*	14,039	*	*	59
PA		*	23,850	11,485	*	381
SC		228	14,725	*	*	1,054
TN		*	47,551	9,707	144	376
TX		*	86,467	33,895	212	1,547
VA		*	46,789	10,079	13	*
WA		*	*	*	*	*
Oth Sts		23,712	179,395	35,002	7,334	24,581
US		26,503	1,228,910	395,198	10,109	39,335
Mature Birds						
Light	2	2,599	179,055	17,726	166	88,774
Heavy		655	60,024	5,120	141	8,803
US	2	3,254	239,079	22,846	307	97,577

See footnote(s) at end of table.

--continued

**Chickens Slaughtered: Number Condemned Post-Mortem by Cause, by Type,  
by State and United States, June 2004 (continued)**

	Bruises	Cadaver	Contam-ination	Overscald	Other	Total <sup>1</sup>
	<i>Number of Head</i>	<i>Number of Head</i>	<i>Number of Head</i>	<i>Number of Head</i>	<i>Number of Head</i>	<i>Number of Head</i>
Young Birds						
AL	4,152	25,998	26,078	8,834	118,489	380,578
AR	8,458	20,472	30,482	8,835	50,162	345,883
CA	419	7,138	2,232	*	10,511	126,836
DE	2,569	18,954	12,090	3,355	31,177	210,132
FL	*	*	*	*	*	*
GA	3,514	30,072	10,048	14,602	73,880	253,454
IN	50	*	297	*	*	*
KY	*	10,001	*	1,175	7,782	75,358
LA	441	2,813	*	*	3,671	35,226
MD	*	6,799	*	794	*	102,321
MS	2,387	12,583	9,093	740	38,845	154,716
MO	1,519	11,353	13,739	470	22,030	132,561
NJ	*	*	*	*	*	*
NY	*	*	1,978	342	4,875	14,827
NC	3,566	24,372	21,975	8,855	89,927	314,792
OH	*	*	*	*	*	*
PA	1,136	3,785	6,647	281	35,404	84,976
SC	702	4,191	2,153	3,158	4,522	40,261
TN	1,325	7,195	6,454	2,038	*	96,234
TX	1,324	7,745	7,760	*	11,268	151,580
VA	1,519	15,159	8,324	*	14,596	105,165
WA	*	*	*	*	*	*
Oth Sts	4,080	9,137	45,025	13,782	98,246	217,104
US	37,161	217,767	204,375	67,261	615,385	2,842,004
Mature Birds						
Light	6,431	3,829	100,373	2,360	76,054	477,369
Heavy	1,519	11,325	24,016	1,516	73,645	186,764
US	7,950	15,154	124,389	3,876	149,699	664,133

\* Included in "Other States" to avoid disclosing individual operations.

<sup>1</sup> The sum of the individual diseases does not add across to the total for "Other States".

**Chickens Slaughtered: Number Condemned Post-Mortem by Cause, by Type,  
by State and United States, July 2004**

State	Tuber- culosis	Leukosis	Septicemia	Airsac- culitis	Synovitis	Tumors
	<i>Number of Head</i>	<i>Number of Head</i>	<i>Number of Head</i>	<i>Number of Head</i>	<i>Number of Head</i>	<i>Number of Head</i>
Young Birds						
AL		233	125,381	88,323	*	*
AR		*	152,638	47,940	*	1,733
CA		*	*	4,115	191	744
DE		5,386	91,904	20,423	*	*
FL		*	*	*	*	*
GA		*	79,163	26,655	*	3,448
IN		*	4,667	*	*	*
KY		*	36,946	7,115	*	1,763
LA		*	19,925	3,083	*	176
MD		*	38,653	8,358	64	*
MS		308	73,757	19,412	690	1,014
MO		1,254	68,306	12,936	436	*
NJ		*	*	*	*	*
NY		*	*	*	*	*
NC	*	570	114,741	39,860	89	*
OH		7	10,586	*	53	24
PA		1,300	24,973	10,684	*	330
SC		*	17,699	*	110	*
TN		*	44,342	*	150	288
TX	*	74	79,861	*	228	1,361
VA		*	41,225	6,761	*	*
WA		*	*	*	*	*
Oth Sts	2	9,124	174,360	69,870	9,172	26,251
US	2	18,256	1,199,127	365,535	11,183	37,132
Mature Birds						
Light		2,182	151,320	16,098	141	73,640
Heavy		725	60,076	2,778	125	9,026
US		2,907	211,396	18,876	266	82,666

See footnote(s) at end of table.

--continued

**Chickens Slaughtered: Number Condemned Post-Mortem by Cause, by Type,  
by State and United States, July 2004 (continued)**

	Bruises	Cadaver	Contam-ination	Overscald	Other	Total <sup>1</sup>
	<i>Number of Head</i>	<i>Number of Head</i>	<i>Number of Head</i>	<i>Number of Head</i>	<i>Number of Head</i>	<i>Number of Head</i>
Young Birds						
AL	4,299	38,116	26,413	4,801	111,950	403,678
AR	7,619	18,733	29,444	2,066	46,508	311,947
CA	437	7,453	2,205	*	*	*
DE	2,459	20,050	11,776	5,032	31,224	193,951
FL	*	*	*	*	*	*
GA	3,830	34,077	9,917	10,711	60,185	228,623
IN	*	*	209	*	*	*
KY	215	10,282	*	*	4,514	67,088
LA	427	2,474	3,201	110	*	31,441
MD	*	8,734	*	1,805	*	112,421
MS	2,458	13,317	9,774	802	36,661	158,193
MO	*	10,784	16,709	1,251	25,101	140,846
NJ	*	*	*	*	*	*
NY	*	*	1,867	*	*	*
NC	3,460	25,335	21,716	7,627	83,441	305,411
OH	*	1,224	*	*	*	*
PA	1,318	*	6,897	196	35,012	85,900
SC	759	4,686	*	2,873	4,012	42,609
TN	1,424	9,466	*	*	*	98,807
TX	1,428	7,009	8,402	1,801	10,316	139,581
VA	1,418	11,960	7,465	*	11,736	88,803
WA	*	*	*	*	*	*
Oth Sts	5,454	12,341	48,229	15,897	117,313	332,151
US	37,005	236,041	204,224	54,972	577,973	2,741,450
Mature Birds						
Light	8,918	5,038	83,288	949	63,536	405,110
Heavy	1,254	9,419	16,727	559	70,950	171,639
US	10,172	14,457	100,015	1,508	134,486	576,749

\* Included in "Other States" to avoid disclosing individual operations.

<sup>1</sup> The sum of the individual diseases does not add across to the total for "Other States".

**Young Turkeys (Mature) Slaughtered: Number, Live Weight, and Average  
Live Weight, by State and United States, July 2004**

State	Number Slaughtered		Live Weight		Average Live Weight	
	June	July	June	July	June	July
	<i>1,000 Head</i>	<i>1,000 Head</i>	<i>1,000 Pounds</i>	<i>1,000 Pounds</i>	<i>Pounds</i>	<i>Pounds</i>
AR	2,500	2,596	46,791	48,103	18.72	18.53
CA	*	*	*	*	*	*
IA	*	*	*	*	*	*
MN	3,190	3,334	84,961	85,663	26.63	25.69
MO	1,604	1,580	49,479	49,500	30.86	31.33
NC	3,254	3,285	90,060	84,796	27.68	25.82
OH	*	*	*	*	*	*
PA	*	*	*	*	*	*
VA	*	*	*	*	*	*
Oth Sts	10,723	10,921	313,628	309,162	29.25	28.31
US	21,271	21,716	584,919	577,224	27.50	26.58

\* Included in "Other States" to avoid disclosing individual operations.

**Young Turkeys (Mature) Slaughtered: Pounds Certified and Post-Mortem  
Condemnations, by State and United States, July 2004**

State	Total Chilled and Frozen Pounds Certified <sup>1</sup>		Post-Mortem Condemnations			
	June	July	N.Y. Dressed Weight		Percent <sup>2</sup>	
			June	July	June	July
	<i>1,000 Pounds</i>	<i>1,000 Pounds</i>	<i>1,000 Pounds</i>	<i>1,000 Pounds</i>	<i>Percent</i>	<i>Percent</i>
AR	39,303	40,132	640	611	1.52	1.41
CA	*	*	*	*	*	*
IA	*	*	*	*	*	*
MN	66,736	67,738	1,714	1,510	2.24	1.96
MO	39,007	38,159	1,023	1,042	2.30	2.34
NC	71,293	68,639	1,256	1,259	1.55	1.65
OH	*	*	*	*	*	*
PA	*	*	*	*	*	*
VA	*	*	*	*	*	*
Oth Sts	246,469	240,774	5,469	5,596	1.94	2.01
US	462,808	455,442	10,102	10,018	1.92	1.93

\* Included in "Other States" to avoid disclosing individual operations.

<sup>1</sup> Ready-to-cook weights.

<sup>2</sup> Pounds condemned as percent of equivalent N.Y. dressed weight of quantity inspected.



**Turkeys Slaughtered: Number Condemned Post-Mortem by Cause, by Type,  
by State and United States, June 2004**

State	Tuber- culosis	Leukosis	Septicemia	Airsac- culitis	Synovitis	Tumors
	<i>Number of Head</i>	<i>Number of Head</i>	<i>Number of Head</i>	<i>Number of Head</i>	<i>Number of Head</i>	<i>Number of Head</i>
Young (Mature)						
AR			4,615	*	*	*
CA		*	6,829	*	*	*
IA			*	*	*	2
MN		*	16,614	*	899	*
MO			9,242	*		*
NC		*	*	*	4	4
OH		*	*	*	*	*
PA			*	*	*	6
VA		*	*	*	*	*
Other States		56	30,741	7,478	3,468	32
US		56	68,041	7,478	4,371	44
Old (Breeders)						
US		6	4,919	639	32	206
	Bruises	Cadaver	Contam- ination	Overscald	Other	Total <sup>1</sup>
	<i>Number of Head</i>	<i>Number of Head</i>	<i>Number of Head</i>	<i>Number of Head</i>	<i>Number of Head</i>	<i>Number of Head</i>
Young (Mature)						
AR	*	*	*	*	1,218	*
CA	*	191	137	*	331	8,064
IA	39	*	311	*	488	*
MN	92	544	740	*	2,992	23,760
MO	*	*	199	*	*	12,346
NC	35	*	476	*	2,913	8,835
OH	*	*	*	*	*	*
PA	151	*	*	*	2,216	*
VA	*	*	*	*	*	*
Other States	240	5,841	2,459	1,471	5,148	55,217
US	557	6,576	4,322	1,471	15,306	108,222
Old (Breeders)						
US	19	156	109	1	3,006	9,093

\* Included in "Other States" to avoid disclosing individual operations.

<sup>1</sup> The sum of the individual diseases does not add across to the total for "Other States".

**Turkeys Slaughtered: Number Condemned Post-Mortem by Cause, by Type,  
by State and United States, July 2004**

State	Tuber- culosis	Leukosis	Septicemia	Airsac- culitis	Synovitis	Tumors
	<i>Number of Head</i>	<i>Number of Head</i>	<i>Number of Head</i>	<i>Number of Head</i>	<i>Number of Head</i>	<i>Number of Head</i>
Young (Mature)						
AR		*	3,971	*	*	2
CA		*	5,496	*	7	*
IA			4,456	1,227	*	*
MN		*	15,235	*	*	*
MO			9,100	*		
NC			*	*		
OH		*	*	*	*	
PA		*	*	*	*	*
VA		*	*	*	*	*
Other States		35	31,250	5,738	3,950	76
US		35	69,508	6,965	3,957	78
Old (Breeders)						
US		1	4,917	733	20	175
	Bruises	Cadaver	Contam- ination	Overscald	Other	Total <sup>1</sup>
	<i>Number of Head</i>	<i>Number of Head</i>	<i>Number of Head</i>	<i>Number of Head</i>	<i>Number of Head</i>	<i>Number of Head</i>
Young (Mature)						
AR	32	605	*	*	1,232	*
CA	15	*	78	*	590	6,918
IA	*	270	*	*	443	8,842
MN	88	425	601	*	2,703	21,925
MO	*	*	*	*	*	12,615
NC	20	*	450	*	2,336	8,580
OH	*	*	*	*	*	*
PA	*	*	*	*	*	*
VA	*	*	*	*	*	*
Other States	308	5,311	3,194	2,694	11,181	54,239
US	463	6,611	4,323	2,694	18,485	113,119
Old (Breeders)						
US	25	148	103	1	3,548	9,671

\* Included in "Other States" to avoid disclosing individual operations.

<sup>1</sup> The sum of the individual diseases does not add across to the total for "Other States".

## Poultry Slaughter Estimates

**Data Sources:** Primary data for poultry slaughter estimates are obtained from the Poultry Inspection Form (FSIS 6000-21). This form is completed by inspectors of the Food Safety and Inspection Service (FSIS), USDA for all Federally Inspected (FI) plants. Over 99 percent of the total U.S. slaughter for any species is under FI. The FSIS 6000-21 forms collect number of head slaughtered daily under FI by species and class as well as condemnations and total live and dressed weights. Approximately 350 plants in the U.S. are operated under Federal Inspection.

**Revision Policy:** Revisions are generally the result of late reports received by FSIS from plants and are usually less than one-half of 1 percent of the preliminary totals. Revisions for the previous month and year-to-date totals are published in each monthly release. Final data are published in the annual summary released in April and reflect any late reports or corrections which occurred after the monthly revision were published.

**Procedures and Reliability:** Plant inspectors submit forms (FSIS 6000-21) weekly summarizing the plant's activity. When inconsistencies in the data are detected, the reports are returned to the inspectors for correction. Inspectors correct or validate the report and resubmit it. The reports cover weekly activities through Saturday night and reported data are allocated to the appropriate month as it enters the database.

A NASS computer program provides a review of current data with historical data for each plant. An edit provides checks for the detection of errors such as invalid plant information, duplication, and erroneous data. Data are summarized weekly and accumulated to monthly totals for this release.

Data for major slaughter plants with missing reports are adjusted prior to publication to assure that all plants slaughtering a significant portion of a specific class are accounted for each week. Estimates for missing weeks are made only after verifying that the plant was in operation. Adjustments are based on either the previous week's information or a week determined to be similar to the one missing. Late reports replace imputed data as they become available. While there is a varying degree of incompleteness from month to month, it has only a minimal impact on the published totals.

Poultry slaughter estimates are based on a census of operating plants and, therefore, have no sampling error. However, they may be subject to errors such as omissions, duplications, and mistakes in reporting, recording, and processing the data. These errors are minimized through strict quality controls in the edit and summarization process, and a careful review of all reported data for consistency and reasonableness.

State data are published for selected states for young chickens and young turkeys. State data are not published if less than three plants operate for a species in a State, or if one plant has 60 percent or more of the total live weight for that species. Data for all states not published are included in the "Other States" category. Also included in this category are data for published states that are confidential (denoted by an \*). Data for all states are included in the U.S. totals. For 2002, young chickens were killed in 34 states, young turkeys in 21 states.

## Definitions

**Ante-Mortem Condemnations** - Birds condemned prior to their entry into the slaughter plant.

**Certified Ready-to-Cook** - The weight of poultry certified wholesome by inspection after post-mortem condemnation pounds are removed. Ready-to-cook represents poultry meat ready for the marketing channel.

**Ducks** - Includes all ducks regardless of age and weight.

**Fryer-Roaster Turkeys** - Young immature birds, usually under 16 weeks of age. Included with young turkeys.

**Mature Chickens** - Fowl from breeder and market egg flocks and stags and cocks.

**New York Dressed Weight** - Carcass weight after only feathers and blood are removed. This weight is approximately 90% of live weight.

**Old Turkeys (Breeders)** - Fully matured birds held for egg production, usually over 15 months of age.

**Other Poultry** - Includes all other ready-to-cook products which bear the USDA Inspected for Wholesomeness legend.

**Post-Mortem Condemnations** - Carcasses or parts condemned by the inspector because of disease or mishandling and removed from the slaughter line and destroyed.

**Young Chickens** - Commercially grown broilers-fryers and other young immature birds such as roasters and capons.

**Young Turkeys (Mature)** - Young birds grown to a matured market age, about 5 months.

## ACCESS TO REPORTS!!

---

For your convenience, there are several ways to obtain NASS reports, data products, and services:

### INTERNET ACCESS

All NASS reports are available free of charge on the worldwide Internet. For access, connect to the Internet and go to the NASS Home Page at: [www.usda.gov/nass/](http://www.usda.gov/nass/). Select "Today's Reports" or Publications and then Reports Calendar or Publications and then Search, by Title or Subject.

### E-MAIL SUBSCRIPTION

All NASS reports are available by subscription free of charge direct to your e-mail address. Starting with the NASS Home Page at [www.usda.gov/nass/](http://www.usda.gov/nass/), click on **Publications**, then click on the **Subscribe by E-mail** button which takes you to the page describing e-mail delivery of reports. Finally, click on **Go to the Subscription Page** and follow the instructions.

-----

### PRINTED REPORTS OR DATA PRODUCTS

**CALL OUR TOLL-FREE ORDER DESK: 800-999-6779 (U.S. and Canada)**  
**Other areas, please call 703-605-6220      FAX: 703-605-6900**  
**(Visa, MasterCard, check, or money order acceptable for payment.)**

-----

### ASSISTANCE

For **assistance** with general agricultural statistics or further information about NASS or its products or services, contact the **Agricultural Statistics Hotline** at **800-727-9540**, 7:30 a.m. to 4:00 p.m. ET, or e-mail: [nass@nass.usda.gov](mailto:nass@nass.usda.gov).

The United States Department of Agriculture (USDA) prohibits discrimination in all its programs on the basis of race, color, national origin, gender, religion, age, disability, political beliefs, sexual orientation, and marital or family status. (Not all prohibited bases apply to all programs.) Persons with disabilities who require alternative means for communication of program information (braille, large print, audiotape, etc.) should contact the USDA's TARGET Center at 202-720-2600 (voice and TDD).

To file a complaint of discrimination, write USDA, Director, Office of Civil Rights, Room 326-W, Whitten Building, 1400 Independence Avenue, SW, Washington, D.C., 20250-9410, or call 202-720-5964 (voice or TDD). USDA is an equal opportunity provider and employer.