



Poultry Slaughter

Released February 28, 2005, by the National Agricultural Statistics Service (NASS), Agricultural Statistics Board, U.S. Department of Agriculture. For information on *Poultry Slaughter* call John Lange at 202-720-0585, office hours 7:00 a.m. to 4:30 p.m. ET.

Ready-to-Cook Weight Down Slightly

Poultry certified wholesome during January 2005 (ready-to-cook weight) totaled 3.30 billion pounds, down slightly from the amount certified in January 2004. Updated totals for December 2004 show that 3.33 billion pounds were certified.

The preliminary total live weight of poultry inspected during January 2005 was 4.44 billion pounds, down slightly from 4.46 billion pounds a year ago. Young chickens inspected totaled 3.80 billion pounds, down 1 percent from January 2004, and mature chickens at 62.2 million pounds, were down 3 percent from the previous year. Turkey inspections totaled 565 million pounds, up 2 percent, and ducks totaled 15.5 million pounds, up 6 percent from last year.

Young chickens slaughtered during January 2005 averaged 5.34 pounds per bird, up 1 percent from January 2004. The average live weight of mature chickens was 5.62 pounds per bird, down 1 percent from a year ago. Turkeys slaughtered during January 2005 averaged 28.8 pounds per bird, up 5 percent from January 2004.

Ante-mortem condemnations during January 2005 totaled 21.3 million pounds. Condemnations were 0.48 percent of the live weight inspected, compared to 0.45 percent a year earlier. Post-mortem condemnations, at 50.5 million pounds (N.Y. dressed weight), were 1.26 percent of quantities inspected, compared with 1.13 percent a year earlier.

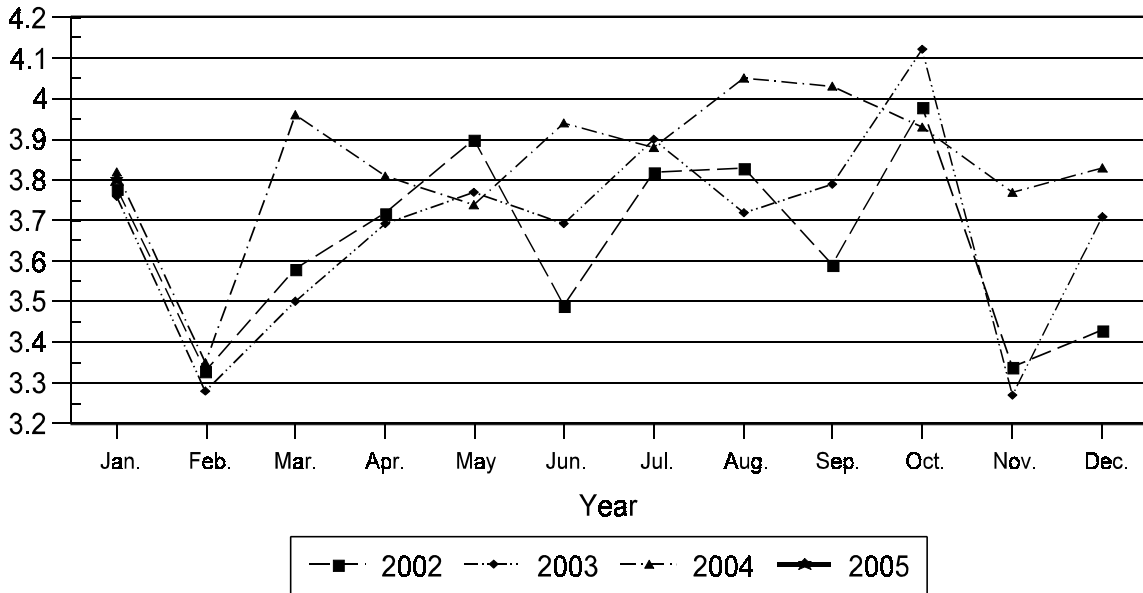
January 2005 contained 21 weekdays (including one holiday) and five Saturdays.
January 2004 contained 22 weekdays (including two holidays) and five Saturdays.

Contents

	Page
Poultry Slaughter: Number, Live Weight, and Average Live Weight by Type, United States, January 2005	4
Poultry Slaughter: Chilled and Frozen, Pounds Certified by Type, United States, January 2005	6
Poultry Slaughter: Ante-Mortem Condemnations by Type, United States, January 2005	8
Poultry Slaughter: Post-Mortem Condemnations by Type, United States, January 2005	9
Young Chickens Slaughtered: Number, Live Weight, and Average Live Weight, by State and United States, January 2005	10
Young Chickens Slaughtered: Pounds Certified and Post-Mortem Condemnations, by State and United States, January 2005	11
Young Chickens Slaughtered: Number Condemned Post-Mortem by Cause, by Type, by State and United States, December 2004	12
Young Chickens Slaughtered: Number Condemned Post-Mortem by Cause, by Type, by State and United States, January 2005	14
Young Turkeys (Mature) Slaughtered: Number, Live Weight, and Average Live Weight, by State and United States, January 2005	16
Young Turkeys (Mature) Slaughtered: Pounds Certified and Post-Mortem Condemnations, by State and United States, January 2005	16
Young Turkeys Slaughtered: Number Condemned Post-Mortem by Cause, by Type, United States, December 2004	17
Young Turkeys Slaughtered: Number Condemned Post-Mortem by Cause, by Type, United States, January 2005	17
Reliability Statement	18
Definitions	19

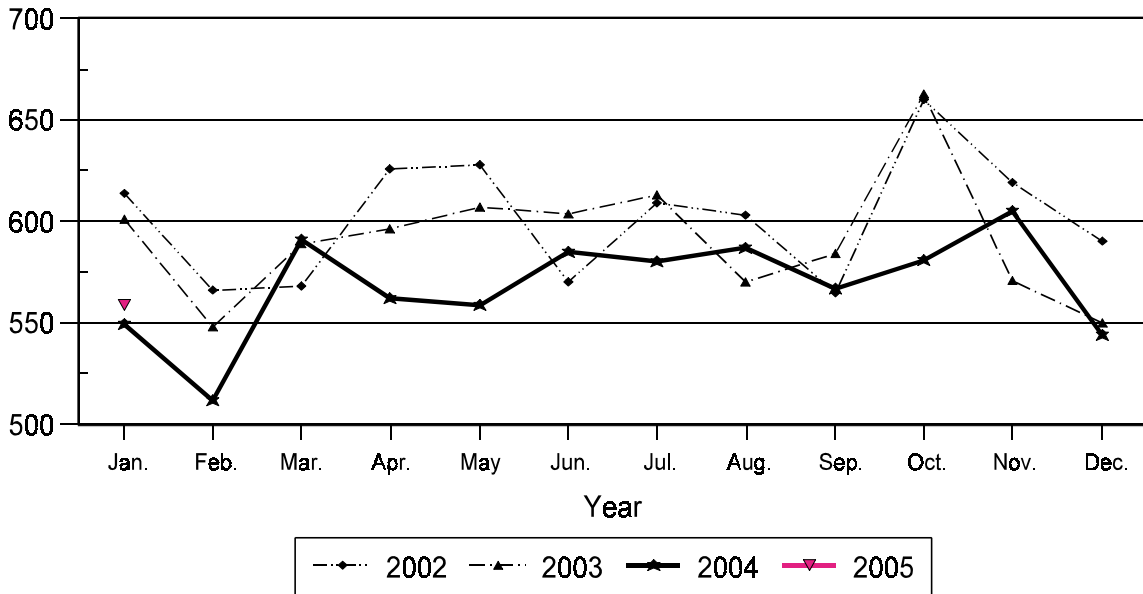
Young Chickens: Live Weight Slaughtered, by Month, 2002-2005

Billion Pounds



Young Turkeys: Live Weight Slaughtered, by Month, 2002-2005

Million Pounds



**Poultry Slaughter: Number, Live Weight, and Average Live Weight by Type,
United States, January 2005 1**

Commodity	Jan 2004	Dec 2004	Jan 2005	Percent of	
				Jan 2004	Dec 2004
	<i>1,000 Head</i>	<i>1,000 Head</i>	<i>1,000 Head</i>	<i>Percent</i>	<i>Percent</i>
Number Slaughtered					
Chickens					
Young	720,976	722,811	711,307	99	98
Mature	11,325	12,259	11,066	98	90
Light	5,838	6,140	5,812	100	95
Heavy	5,487	6,119	5,254	96	86
Total	732,301	735,070	722,373	99	98
Turkeys					
Young	19,946	19,641	19,413	97	99
Old	207	269	202	98	75
Total	20,153	19,910	19,615	97	99
Ducks	2,153	2,385	2,295	107	96
	<i>1,000 pounds</i>	<i>1,000 pounds</i>	<i>1,000 pounds</i>	<i>Percent</i>	<i>Percent</i>
Live Weight					
Chickens					
Young	3,823,817	3,834,267	3,799,291	99	99
Mature	64,110	68,934	62,152	97	90
Light	20,188	20,619	18,981	94	92
Heavy	43,922	48,315	43,171	98	89
Total	3,887,927	3,903,201	3,861,443	99	99
Turkeys					
Young	549,136	544,364	558,938	102	103
Old	5,995	7,290	5,727	96	79
Total	555,131	551,654	564,665	102	102
Ducks	14,608	16,175	15,518	106	96
Other Poultry	222	528	419	189	79
Total Poultry	4,457,888	4,471,558	4,442,045	100	99
	<i>Pounds</i>	<i>Pounds</i>	<i>Pounds</i>	<i>Percent</i>	<i>Percent</i>
Average Live Weight					
Chickens					
Young	5.30	5.30	5.34	101	101
Mature	5.66	5.62	5.62	99	100
Light	3.46	3.36	3.27	95	97
Heavy	8.00	7.90	8.22	103	104
Total	5.31	5.31	5.35	101	101
Turkeys					
Young	27.53	27.72	28.79	105	104
Old	28.92	27.08	28.29	98	104
Total	27.55	27.71	28.79	105	104
Ducks	6.79	6.78	6.76	100	100

See footnote(s) at end of table.

--continued

**Poultry Slaughter: Number, Live Weight, and Average Live Weight by Type,
United States, January 2005 ¹ (continued)**

Commodity	January to Date			Percent of	
	2003	2004	2005	2003	2004
	<i>1,000 Head</i>	<i>1,000 Head</i>	<i>1,000 Head</i>	<i>Percent</i>	<i>Percent</i>
Number Slaughtered					
Chickens					
Young	725,178	720,976	711,307	98	99
Mature	14,362	11,325	11,066	77	98
Light	8,224	5,838	5,812	71	100
Heavy	6,138	5,487	5,254	86	96
Total	739,540	732,301	722,373	98	99
Turkeys					
Young	21,342	19,946	19,413	91	97
Old	319	207	202	63	98
Total	21,661	20,153	19,615	91	97
Ducks	2,134	2,153	2,295	108	107
	<i>1,000 pounds</i>	<i>1,000 pounds</i>	<i>1,000 pounds</i>	<i>Percent</i>	<i>Percent</i>
Live Weight					
Chickens					
Young	3,762,861	3,823,817	3,799,291	101	99
Mature	75,245	64,110	62,152	83	97
Light	28,000	20,188	18,981	68	94
Heavy	47,245	43,922	43,171	91	98
Total	3,838,106	3,887,927	3,861,443	101	99
Turkeys					
Young	600,502	549,136	558,938	93	102
Old	8,631	5,995	5,727	66	96
Total	609,133	555,131	564,665	93	102
Ducks	14,266	14,608	15,518	109	106
Other Poultry	985	222	419	43	189
Total Poultry	4,462,490	4,457,888	4,442,045	100	100
	<i>Pounds</i>	<i>Pounds</i>	<i>Pounds</i>	<i>Percent</i>	<i>Percent</i>
Average Live Weight					
Chickens					
Young	5.19	5.30	5.34	103	101
Mature	5.24	5.66	5.62	107	99
Light	3.40	3.46	3.27	96	95
Heavy	7.70	8.00	8.22	107	103
Total	5.19	5.31	5.35	103	101
Turkeys					
Young	28.14	27.53	28.79	102	105
Old	27.04	28.92	28.29	105	98
Total	28.12	27.55	28.79	102	105
Ducks	6.69	6.79	6.76	101	100

¹ Federally inspected only.

**Poultry Slaughter: Chilled and Frozen, Pounds Certified by Type,
United States, January 2005 ¹**

Commodity	Jan 2004	Dec 2004	Jan 2005	Percent of	
				Jan 2004	Dec 2004
	<i>1,000 Pounds</i>	<i>1,000 Pounds</i>	<i>1,000 Pounds</i>	<i>Percent</i>	<i>Percent</i>
Chilled					
Chickens					
Young	2,553,222	2,582,848	2,570,903	101	100
Mature	39,039	42,178	38,126	98	90
Light	10,384	10,653	9,951	96	93
Heavy	28,655	31,525	28,175	98	89
Total	2,592,261	2,625,026	2,609,029	101	99
Turkeys					
Young	239,252	258,020	252,801	106	98
Old	3,823	4,382	4,064	106	93
Total	243,075	262,402	256,865	106	98
Ducks	7,132	6,104	5,579	78	91
Other Poultry	129	287	211	164	74
Total Poultry	2,842,597	2,893,819	2,871,684	101	99
Frozen					
Chickens					
Young	270,377	254,075	234,507	87	92
Mature	170	302	223	131	74
Light			1		
Heavy	170	302	222	131	74
Total	270,547	254,377	234,730	87	92
Turkeys					
Young	196,235	176,424	186,184	95	106
Old	721	1,139	232	32	20
Total	196,956	177,563	186,416	95	105
Ducks	4,282	5,322	5,501	128	103
Other Poultry	39	58	42	108	72
Total Poultry	471,824	437,320	426,689	90	98
Total Chilled and Frozen					
Chickens					
Young	2,823,599	2,836,923	2,805,410	99	99
Mature	39,209	42,480	38,349	98	90
Light	10,384	10,653	9,952	96	93
Heavy	28,825	31,827	28,397	99	89
Total	2,862,808	2,879,403	2,843,759	99	99
Turkeys					
Young	435,487	434,444	438,985	101	101
Old	4,544	5,521	4,296	95	78
Total	440,031	439,965	443,281	101	101
Ducks	11,414	11,426	11,080	97	97
Other Poultry	168	345	253	151	73
Total Poultry	3,314,421	3,331,139	3,298,373	100	99

See footnote(s) at end of table.

--continued

**Poultry Slaughter: Chilled and Frozen, Pounds Certified by Type,
United States, January 2005 ¹ (continued)**

Commodity	January to Date			Percent of	
	2003	2004	2005	2003	2004
	<i>1,000 Pounds</i>	<i>1,000 Pounds</i>	<i>1,000 Pounds</i>	<i>Percent</i>	<i>Percent</i>
Chilled					
Chickens					
Young	2,505,935	2,553,222	2,570,903	103	101
Mature	44,299	39,039	38,126	86	98
Light	13,480	10,384	9,951	74	96
Heavy	30,819	28,655	28,175	91	98
Total	2,550,234	2,592,261	2,609,029	102	101
Turkeys					
Young	257,580	239,252	252,801	98	106
Old	5,499	3,823	4,064	74	106
Total	263,079	243,075	256,865	98	106
Ducks	3,693	7,132	5,579	151	78
Other Poultry	250	129	211	84	164
Total Poultry	2,817,256	2,842,597	2,871,684	102	101
Frozen					
Chickens					
Young	268,662	270,377	234,507	87	87
Mature	912	170	223	24	131
Light	729		1		
Heavy	183	170	222	121	131
Total	269,574	270,547	234,730	87	87
Turkeys					
Young	215,986	196,235	186,184	86	95
Old	775	721	232	30	32
Total	216,761	196,956	186,416	86	95
Ducks	6,668	4,282	5,501	82	128
Other Poultry	354	39	42	12	108
Total Poultry	493,357	471,824	426,689	86	90
Total Chilled and Frozen					
Chickens					
Young	2,774,597	2,823,599	2,805,410	101	99
Mature	45,211	39,209	38,349	85	98
Light	14,209	10,384	9,952	70	96
Heavy	31,002	28,825	28,397	92	99
Total	2,819,808	2,862,808	2,843,759	101	99
Turkeys					
Young	473,566	435,487	438,985	93	101
Old	6,274	4,544	4,296	68	95
Total	479,840	440,031	443,281	92	101
Ducks	10,361	11,414	11,080	107	97
Other Poultry	604	168	253	42	151
Total Poultry	3,310,613	3,314,421	3,298,373	100	100

¹ Ready-to-cook weights.

**Poultry Slaughter: Ante-Mortem Condemnations by Type,
United States, January 2005 ¹**

Commodity	Jan 2004	Dec 2004	Jan 2005	Percent of		January to Date		Percent of 2004
				Jan 2004	Dec 2004	2004	2005	
				<i>1,000 Pounds</i>				
	<i>1,000 Pounds</i>	<i>1,000 Pounds</i>	<i>1,000 Pounds</i>	<i>Percent</i>	<i>Percent</i>	<i>1,000 Pounds</i>	<i>1,000 Pounds</i>	<i>Percent</i>
Live Weight								
Chickens								
Young	16,733	18,439	18,319	109	99	16,733	18,319	109
Mature	1,178	974	979	83	101	1,178	979	83
Light	458	313	361	79	115	458	361	79
Heavy	720	661	618	86	93	720	618	86
Total	17,911	19,413	19,298	108	99	17,911	19,298	108
Turkeys								
Young	2,093	1,493	1,827	87	122	2,093	1,827	87
Old	40	46	90	225	196	40	90	225
Total	2,133	1,539	1,917	90	125	2,133	1,917	90
Ducks	25	159	33	132	21	25	33	132
Other Poultry		1	2		200		2	
Total Poultry	20,069	21,112	21,250	106	101	20,069	21,250	106
	<i>Percent</i>	<i>Percent</i>	<i>Percent</i>	<i>Percent</i>	<i>Percent</i>	<i>Percent</i>	<i>Percent</i>	<i>Percent</i>
Percent of Total Weight Condemned ²								
Chickens								
Young	0.44	0.48	0.48	109	100	0.44	0.48	109
Mature	1.84	1.41	1.58	86	112	1.84	1.58	86
Light	2.27	1.52	1.90	84	125	2.27	1.90	84
Heavy	1.64	1.37	1.43	87	104	1.64	1.43	87
Total	0.46	0.50	0.50	109	100	0.46	0.50	109
Turkeys								
Young	0.38	0.27	0.33	87	122	0.38	0.33	87
Old	0.66	0.63	1.58	239	251	0.66	1.58	239
Total	0.38	0.28	0.34	89	121	0.38	0.34	89
Ducks	0.17	0.98	0.21	124	21	0.17	0.21	124
Other Poultry	0.07	0.12	0.50	714	417	0.07	0.50	714
Total Poultry	0.45	0.47	0.48	107	102	0.45	0.48	107

¹ Federally inspected only.

² Pounds condemned as a percent of live weight pounds inspected.

**Poultry Slaughter: Post-Mortem Condemnations by Type,
United States, January 2005 ¹**

Commodity	Jan 2004	Dec 2004	Jan 2005	Percent of		January to Date		Percent of 2004
				Jan 2004	Dec 2004	2004	2005	
				<i>1,000 Pounds</i>				
<i>N.Y. Dressed Weight</i>	<i>1,000 Pounds</i>	<i>1,000 Pounds</i>	<i>1,000 Pounds</i>	<i>Percent</i>	<i>Percent</i>	<i>1,000 Pounds</i>	<i>1,000 Pounds</i>	<i>Percent</i>
Chickens								
Young	32,084	38,637	37,759	118	98	32,084	37,759	118
Mature	3,056	3,044	2,999	98	99	3,056	2,999	98
Light	1,576	1,566	1,292	82	83	1,576	1,292	82
Heavy	1,480	1,478	1,707	115	115	1,480	1,707	115
Total	35,140	41,681	40,758	116	98	35,140	40,758	116
Turkeys								
Young	9,437	9,002	9,047	96	100	9,437	9,047	96
Old	342	369	302	88	82	342	302	88
Total	9,779	9,371	9,349	96	100	9,779	9,349	96
Ducks	350	474	401	115	85	350	401	115
Other Poultry	3	6	5	167	83	3	5	167
Total Poultry	45,272	51,532	50,513	112	98	45,272	50,513	112
	<i>Percent</i>	<i>Percent</i>	<i>Percent</i>	<i>Percent</i>	<i>Percent</i>	<i>Percent</i>	<i>Percent</i>	<i>Percent</i>
<i>Percent of Total Weight Condemned ²</i>								
Chickens								
Young	0.93	1.12	1.10	118	98	0.93	1.10	118
Mature	5.30	4.91	5.36	101	109	5.30	5.36	101
Light	8.67	8.44	7.56	87	90	8.67	7.56	87
Heavy	3.74	3.40	4.39	117	129	3.74	4.39	117
Total	1.00	1.19	1.17	117	98	1.00	1.17	117
Turkeys								
Young	1.91	1.84	1.80	94	98	1.91	1.80	94
Old	6.34	5.63	5.85	92	104	6.34	5.85	92
Total	1.96	1.89	1.84	94	97	1.96	1.84	94
Ducks	2.66	3.26	2.87	108	88	2.66	2.87	108
Other Poultry	1.51	1.25	1.46	97	117	1.51	1.46	97
Total Poultry	1.13	1.28	1.26	112	98	1.13	1.26	112

¹ Federally inspected only.

² Pounds condemned as a percent of N.Y. dressed weight of quantity inspected.

**Young Chickens Slaughtered: Number, Live Weight, and Average Live Weight,
by State and United States, January 2005**

State	Number Slaughtered		Live Weight		Average Live Weight	
	December	January	December	January	December	January
	<i>1,000 Head</i>	<i>1,000 Head</i>	<i>1,000 Pounds</i>	<i>1,000 Pounds</i>	<i>Pounds</i>	<i>Pounds</i>
AL	89,505	86,199	467,679	454,867	5.23	5.28
AR	98,558	95,152	488,910	473,880	4.96	4.98
CA	*	*	*	*	*	*
DE	24,254	23,787	154,485	155,898	6.37	6.55
FL	*	*	*	*	*	*
GA	106,096	100,423	539,294	508,522	5.08	5.06
KY	21,890	22,325	119,108	119,555	5.44	5.36
LA	16,229	15,980	92,344	89,481	5.69	5.60
MD	11,983	11,865	57,220	55,746	4.77	4.70
MS	63,078	62,741	353,383	350,822	5.60	5.59
MO	33,482	31,999	157,524	152,677	4.70	4.77
NJ	*	*	*	*	*	*
NY	*	*	*	*	*	*
NC	54,544	58,120	352,250	365,397	6.46	6.29
OH	3,214	3,403	17,674	19,157	5.50	5.63
PA	9,720	10,049	51,831	53,924	5.33	5.37
SC	20,294	20,119	121,045	124,148	5.96	6.17
TN	19,864	19,842	104,664	105,255	5.27	5.30
TX	54,970	51,538	277,344	272,362	5.05	5.28
VA	27,889	27,736	139,395	139,982	5.00	5.05
WA	*	*	*	*	*	*
Oth Sts	67,241	70,029	340,117	357,618	5.06	5.11
US	722,811	711,307	3,834,267	3,799,291	5.30	5.34

* Included in "Other States" to avoid disclosing individual operations.

**Young Chickens Slaughtered: Pounds Certified and Post-Mortem Condemnations
by State and United States, January 2005**

State	Total Chilled and Frozen Pounds Certified ¹		Post-Mortem Condemnations			
			N.Y. Dressed Weight		Percent ²	
	December	January	December	January	December	January
	<i>1,000 Pounds</i>	<i>1,000 Pounds</i>	<i>1,000 Pounds</i>	<i>1,000 Pounds</i>	<i>Percent</i>	<i>Percent</i>
AL	347,972	338,474	5,080	4,575	1.21	1.12
AR	352,992	342,982	5,113	4,768	1.16	1.12
CA	*	*	*	*	*	*
DE	111,103	111,969	2,225	2,686	1.60	1.91
FL	*	*	*	*	*	*
GA	392,894	366,284	4,518	3,650	0.93	0.80
KY	88,626	90,511	1,096	862	1.02	0.80
LA	66,387	63,841	485	491	0.58	0.61
MD	41,545	40,071	599	757	1.16	1.51
MS	262,060	258,132	2,750	2,750	0.86	0.87
MO	117,047	111,133	1,413	1,319	1.00	0.96
NJ	*	*	*	*	*	*
NY	*	*	*	*	*	*
NC	270,900	283,875	4,699	4,864	1.48	1.48
OH	12,728	14,143	342	270	2.15	1.57
PA	36,089	37,455	844	885	1.81	1.82
SC	91,367	89,575	702	632	0.64	0.57
TN	79,938	81,318	908	923	0.96	0.97
TX	215,556	211,715	2,739	2,858	1.10	1.17
VA	103,526	103,281	1,786	1,873	1.42	1.49
WA	*	*	*	*	*	*
Oth Sts	246,193	260,651	3,338	3,596	1.09	1.12
US	2,836,923	2,805,410	38,637	37,759	1.12	1.10

* Included in "Other States" to avoid disclosing individual operations.

¹ Ready-to-cook weights.

² Pounds condemned as percent of equivalent N.Y. dressed weight of quantity inspected.

**Chickens Slaughtered: Number Condemned Post-Mortem by Cause, by Type,
by State and United States, December 2004**

State	Tuber- culosis	Leukosis	Septicemia	Airsac- culitis	Synovitis	Tumors
	<i>Number of Head</i>	<i>Number of Head</i>	<i>Number of Head</i>	<i>Number of Head</i>	<i>Number of Head</i>	<i>Number of Head</i>
Young Birds						
AL		349	108,809	60,538	*	*
AR		1,638	184,910	101,693	4,244	2,383
CA		*	*	6,524	188	734
DE		*	111,153	52,899	*	7,361
FL		*	*	*	*	*
GA		345	76,422	62,537	175	4,505
IN		*	*	*	*	*
KY		53	54,187	*	43	*
LA		96	18,824	4,341	*	*
MD		*	44,321	25,859	*	*
MS		245	68,453	35,186	597	1,189
MO		1,196	95,365	25,135	*	2,390
NJ		*	*	*	*	*
NY		*	*	*	*	*
NC		321	106,010	64,189	*	*
OH		10	16,934	*	13	50
PA		*	34,870	21,271	406	315
SC		75	*	*	75	*
TN		161	52,791	11,543	125	529
TX		272	88,219	45,680	105	1,715
VA		248	56,944	26,750	*	*
WA		*	*	*	*	*
Oth Sts		28,869	216,499	90,867	3,233	25,122
US		33,878	1,334,711	635,012	9,204	46,293
Mature Birds						
Light	1	2,822	217,723	21,192	189	87,563
Heavy		3,439	61,792	2,443	85	10,322
US	1	6,261	279,515	23,635	274	97,885

See footnote(s) at end of table.

--continued

**Chickens Slaughtered: Number Condemned Post-Mortem by Cause, by Type,
by State and United States, December 2004 (continued)**

	Bruises	Cadaver	Contam-ination	Overscald	Other	Total ¹
	<i>Number of Head</i>	<i>Number of Head</i>	<i>Number of Head</i>	<i>Number of Head</i>	<i>Number of Head</i>	<i>Number of Head</i>
Young Birds						
AL	3,243	26,418	20,578	7,149	120,805	352,050
AR	8,252	28,624	29,879	4,023	54,393	420,039
CA	357	*	1,829	1,448	9,830	*
DE	2,418	11,297	10,512	2,213	52,825	272,103
FL	*	*	*	*	*	*
GA	2,672	42,162	8,715	5,685	67,582	270,800
IN	*	*	*	*	*	*
KY	186	9,286	3,416	1,374	*	*
LA	289	3,763	2,570	*	*	32,651
MD	*	8,497	*	*	*	*
MS	1,708	16,399	11,936	1,962	38,296	175,971
MO	1,355	8,109	*	*	24,245	168,526
NJ	*	*	*	*	*	*
NY	*	*	3,111	274	*	26,401
NC	2,940	16,629	16,104	5,372	108,756	330,349
OH	89	*	*	*	*	*
PA	1,003	*	6,753	*	12,955	83,308
SC	*	4,646	1,941	1,653	4,687	36,530
TN	*	11,734	4,623	*	*	126,664
TX	811	7,278	7,838	1,615	16,764	170,297
VA	1,376	9,926	5,536	2,475	19,954	127,498
WA	*	*	*	*	*	*
Oth Sts	5,100	21,554	53,902	6,043	191,990	677,643
US	31,799	226,322	189,243	41,286	723,082	3,270,830
Mature Birds						
Light	7,854	6,499	128,530	2,170	67,379	541,922
Heavy	1,505	13,274	21,444	300	79,189	193,793
US	9,359	19,773	149,974	2,470	146,568	735,715

* Included in "Other States" to avoid disclosing individual operations.

¹ The sum of the individual diseases does not add across to the total for "Other States".

**Chickens Slaughtered: Number Condemned Post-Mortem by Cause, by Type,
by State and United States, January 2005**

State	Tuber- culosis	Leukosis	Septicemia	Airsac- culitis	Synovitis	Tumors
	<i>Number of Head</i>	<i>Number of Head</i>	<i>Number of Head</i>	<i>Number of Head</i>	<i>Number of Head</i>	<i>Number of Head</i>
Young Birds						
AL		*	111,565	58,339	1,144	*
AR		1,024	174,538	115,551	3,090	2,603
CA		*	*	4,830	349	833
DE		20,890	113,117	55,042	35	9,115
FL		*	*	*	*	*
GA		*	72,018	50,893	*	4,648
IN		10	*	*	*	*
KY		*	48,004	16,617	31	*
LA		69	18,116	5,335	66	*
MD		*	49,452	33,056	87	*
MS		*	63,480	39,491	507	796
MO		1,096	88,783	20,883	*	*
NJ		*	*	*	*	*
NY		*	*	*	*	*
NC		532	110,040	96,305	*	*
OH			15,551	*	32	*
PA		*	35,257	24,733	*	432
SC		*	11,533	6,021	*	*
TN		187	55,915	16,731	69	558
TX		71	97,534	69,285	123	1,504
VA		*	59,217	28,386	42	*
WA		*	*	*	*	*
Oth Sts		18,504	228,490	35,491	2,253	31,848
US		42,383	1,352,610	676,989	7,828	52,337
Mature Birds						
Light		2,482	189,028	20,008	87	91,881
Heavy		1,811	55,744	2,018	44	7,846
US		4,293	244,772	22,026	131	99,727

See footnote(s) at end of table.

--continued

**Chickens Slaughtered: Number Condemned Post-Mortem by Cause, by Type,
by State and United States, January 2005 (continued)**

	Bruises	Cadaver	Contam-ination	Overscald	Other	Total ¹
	<i>Number of Head</i>	<i>Number of Head</i>	<i>Number of Head</i>	<i>Number of Head</i>	<i>Number of Head</i>	<i>Number of Head</i>
Young Birds						
AL	3,478	31,607	20,491	5,499	132,467	368,276
AR	6,054	24,082	25,345	3,474	60,612	416,373
CA	525	*	1,657	*	15,177	158,512
DE	2,164	11,609	10,496	2,015	69,586	294,069
FL	*	*	*	*	*	*
GA	2,542	40,747	8,971	5,768	83,108	270,454
IN	*	*	*	*	*	16,416
KY	*	7,316	2,991	*	*	88,282
LA	477	4,914	2,702	*	3,050	37,272
MD	*	8,532	*	*	*	*
MS	1,675	12,454	11,168	*	36,848	167,463
MO	1,395	9,418	9,010	388	23,654	157,997
NJ	120	*	*	*	*	*
NY	*	*	2,303	*	*	22,466
NC	2,830	17,392	20,812	4,237	129,566	393,706
OH	112	1,205	*	*	*	38,762
PA	918	*	8,403	*	11,436	89,461
SC	447	4,651	1,661	*	2,314	30,085
TN	866	11,944	4,400	*	*	119,047
TX	805	6,223	7,048	838	12,532	195,963
VA	1,424	9,590	5,752	*	14,715	124,769
WA	*	*	*	*	*	*
Oth Sts	3,782	27,198	37,478	18,463	164,838	382,543
US	29,614	228,882	180,688	40,682	759,903	3,371,916
Mature Birds						
Light	4,025	7,194	111,938	1,115	59,886	487,644
Heavy	1,629	25,123	15,156	69	51,673	161,113
US	5,654	32,317	127,094	1,184	111,559	648,757

* Included in "Other States" to avoid disclosing individual operations.

¹ The sum of the individual diseases does not add across to the total for "Other States".

Young Turkeys (Mature) Slaughtered: Number, Live Weight, and Average Live Weight, by State and United States, January 2005

State	Number Slaughtered		Live Weight		Average Live Weight	
	December	January	December	January	December	January
	<i>1,000 Head</i>	<i>1,000 Head</i>	<i>1,000 Pounds</i>	<i>1,000 Pounds</i>	<i>Pounds</i>	<i>Pounds</i>
AR	3,012	2,945	55,155	55,825	18.31	18.96
CA	1,298	*	31,613	*	24.36	*
MN	2,745	2,663	77,387	77,837	28.20	29.22
MO	1,460	1,636	46,725	46,322	32.00	28.32
Oth Sts	11,126	12,169	333,484	378,954	29.97	31.14
US	19,641	19,413	544,364	558,938	27.72	28.79

Young Turkeys (Mature) Slaughtered: Pounds Certified and Post-Mortem Condemnations, by State and United States, January 2005

State	Total Chilled and Frozen Pounds Certified ¹		Post-Mortem Condemnations			
			N.Y. Dressed Weight		Percent ²	
	December	January	December	January	December	January
	<i>1,000 Pounds</i>	<i>1,000 Pounds</i>	<i>1,000 Pounds</i>	<i>1,000 Pounds</i>	<i>Percent</i>	<i>Percent</i>
AR	45,840	46,266	575	677	1.16	1.35
CA	26,165	*	650	*	2.29	*
MN	61,848	60,288	1,944	1,624	2.79	2.32
MO	36,602	35,973	848	815	2.02	1.96
Oth Sts	263,989	296,458	4,985	5,931	1.66	1.74
US	434,444	438,985	9,002	9,047	1.84	1.80

¹ Ready-to-cook weights.

² Pounds condemned as percent of equivalent N.Y. dressed weight of quantity inspected.

**Turkeys Slaughtered: Number Condemned Post-Mortem by Cause, by Type,
United States, December 2004**

State	Tuber- culosis	Leukosis	Septicemia	Airsac- culitis	Synovitis	Tumors
	<i>Number of Head</i>	<i>Number of Head</i>	<i>Number of Head</i>	<i>Number of Head</i>	<i>Number of Head</i>	<i>Number of Head</i>
Young (Mature) US		50	76,905	7,370	4,437	42
Old (Breeders) US		6	4,287	904	12	166
	Bruises	Cadaver	Contam- ination	Overscald	Other	Total ¹
	<i>Number of Head</i>	<i>Number of Head</i>	<i>Number of Head</i>	<i>Number of Head</i>	<i>Number of Head</i>	<i>Number of Head</i>
Young (Mature) US	645	4,753	4,697	2,268	18,690	119,857
Old (Breeders) US	21	81	218	1	2,212	7,908

**Turkeys Slaughtered: Number Condemned Post-Mortem by Cause, by Type,
United States, January 2005**

State	Tuber- culosis	Leukosis	Septicemia	Airsac- culitis	Synovitis	Tumors
	<i>Number of Head</i>	<i>Number of Head</i>	<i>Number of Head</i>	<i>Number of Head</i>	<i>Number of Head</i>	<i>Number of Head</i>
Young (Mature) US	292	83	80,841	13,356	4,355	89
Old (Breeders) US		5	5,197	617	13	72
	Bruises	Cadaver	Contam- ination	Overscald	Other	Total ¹
	<i>Number of Head</i>	<i>Number of Head</i>	<i>Number of Head</i>	<i>Number of Head</i>	<i>Number of Head</i>	<i>Number of Head</i>
Young (Mature) US	576	4,552	5,023	1,797	15,167	126,131
Old (Breeders) US	22	65	148	2	1,319	7,460

Poultry Slaughter Estimates

Data Sources: Primary data for poultry slaughter estimates are obtained from the Poultry Inspection Form (FSIS 6000-21). This form is completed by inspectors of the Food Safety and Inspection Service (FSIS), USDA for all Federally Inspected (FI) plants. Over 99 percent of the total U.S. slaughter for any species is under FI. The FSIS 6000-21 forms collect number of head slaughtered daily under FI by species and class as well as condemnations and total live and dressed weights. Approximately 350 plants in the U.S. are operated under Federal Inspection.

Revision Policy: Revisions are generally the result of late reports received by FSIS from plants and are usually less than one-half of 1 percent of the preliminary totals. Revisions for the previous month and year-to-date totals are published in each monthly release. Final data are published in the annual summary released in April and reflect any late reports or corrections which occurred after the monthly revision were published.

Procedures and Reliability: Plant inspectors submit forms (FSIS 6000-21) weekly summarizing the plant's activity. When inconsistencies in the data are detected, the reports are returned to the inspectors for correction. Inspectors correct or validate the report and resubmit it. The reports cover weekly activities through Saturday night and reported data are allocated to the appropriate month as it enters the database.

A NASS computer program provides a review of current data with historical data for each plant. An edit provides checks for the detection of errors such as invalid plant information, duplication, and erroneous data. Data are summarized weekly and accumulated to monthly totals for this release.

Data for major slaughter plants with missing reports are adjusted prior to publication to assure that all plants slaughtering a significant portion of a specific class are accounted for each week. Estimates for missing weeks are made only after verifying that the plant was in operation. Adjustments are based on either the previous week's information or a week determined to be similar to the one missing. Late reports replace imputed data as they become available. While there is a varying degree of incompleteness from month to month, it has only a minimal impact on the published totals.

Poultry slaughter estimates are based on a census of operating plants and, therefore, have no sampling error. However, they may be subject to errors such as omissions, duplications, and mistakes in reporting, recording, and processing the data. These errors are minimized through strict quality controls in the edit and summarization process, and a careful review of all reported data for consistency and reasonableness.

State data are published for selected states for young chickens and young turkeys. State data are not published if less than three plants operate for a species in a State, or if one plant has 60 percent or more of the total live weight for that species. Data for all states not published are included in the "Other States" category. Also included in this category are data for published states that are confidential (denoted by an *). Data for all states are included in the U.S. totals. For 2002, young chickens were killed in 34 states, young turkeys in 21 states.

Definitions

Ante-Mortem Condemnations - Birds condemned prior to their entry into the slaughter plant.

Certified Ready-to-Cook - The weight of poultry certified wholesome by inspection after post-mortem condemnation pounds are removed. Ready-to-cook represents poultry meat ready for the marketing channel.

Ducks - Includes all ducks regardless of age and weight.

Fryer-Roaster Turkeys - Young immature birds, usually under 16 weeks of age. Included with young turkeys.

Mature Chickens - Fowl from breeder and market egg flocks and stags and cocks.

New York Dressed Weight - Carcass weight after only feathers and blood are removed. This weight is approximately 90% of live weight.

Old Turkeys (Breeders) - Fully matured birds held for egg production, usually over 15 months of age.

Other Poultry - Includes all other ready-to-cook products which bear the USDA Inspected for Wholesomeness legend.

Post-Mortem Condemnations - Carcasses or parts condemned by the inspector because of disease or mishandling and removed from the slaughter line and destroyed.

Young Chickens - Commercially grown broilers-fryers and other young immature birds such as roasters and capons.

Young Turkeys (Mature) - Young birds grown to a matured market age, about 5 months.

ACCESS TO REPORTS!!

For your convenience, there are several ways to obtain NASS reports, data products, and services:

INTERNET ACCESS

All NASS reports are available free of charge on the worldwide Internet. For access, connect to the Internet and go to the NASS Home Page at: www.usda.gov/nass/. Select "Today's Reports" or Publications and then Reports Calendar or Publications and then Search, by Title or Subject.

E-MAIL SUBSCRIPTION

All NASS reports are available by subscription free of charge direct to your e-mail address. Starting with the NASS Home Page at www.usda.gov/nass/, click on **Publications**, then click on the **Subscribe by E-mail** button which takes you to the page describing e-mail delivery of reports. Finally, click on **Go to the Subscription Page** and follow the instructions.

PRINTED REPORTS OR DATA PRODUCTS

CALL OUR TOLL-FREE ORDER DESK: 800-999-6779 (U.S. and Canada)
Other areas, please call 703-605-6220 FAX: 703-605-6900
(Visa, MasterCard, check, or money order acceptable for payment.)

ASSISTANCE

For **assistance** with general agricultural statistics or further information about NASS or its products or services, contact the **Agricultural Statistics Hotline** at **800-727-9540**, 7:30 a.m. to 4:00 p.m. ET, or e-mail: nass@nass.usda.gov.

The United States Department of Agriculture (USDA) prohibits discrimination in all its programs on the basis of race, color, national origin, gender, religion, age, disability, political beliefs, sexual orientation, and marital or family status. (Not all prohibited bases apply to all programs.) Persons with disabilities who require alternative means for communication of program information (braille, large print, audiotape, etc.) should contact the USDA's TARGET Center at 202-720-2600 (voice and TDD).

To file a complaint of discrimination, write USDA, Director, Office of Civil Rights, Room 326-W, Whitten Building, 1400 Independence Avenue, SW, Washington, D.C., 20250-9410, or call 202-720-5964 (voice or TDD). USDA is an equal opportunity provider and employer.