



NASS

FACT FINDERS FOR AGRICULTURE
UNITED STATES DEPARTMENT OF AGRICULTURE

Washington, D.C.

Poultry Slaughter

Released January 31, 2006, by the National Agricultural Statistics Service (NASS), Agricultural Statistics Board, U.S. Department of Agriculture. For information on *Poultry Slaughter* call John Lange at 202-720-0585, office hours 7:00 a.m. to 4:30 p.m. ET.

Ready-to-Cook Weight Up 3 Percent

Poultry certified wholesome during December 2005 (ready-to-cook weight) totaled 3.42 billion pounds, up 3 percent from the amount certified in December 2004. Updated totals for November 2005 show that 3.47 billion pounds were certified.

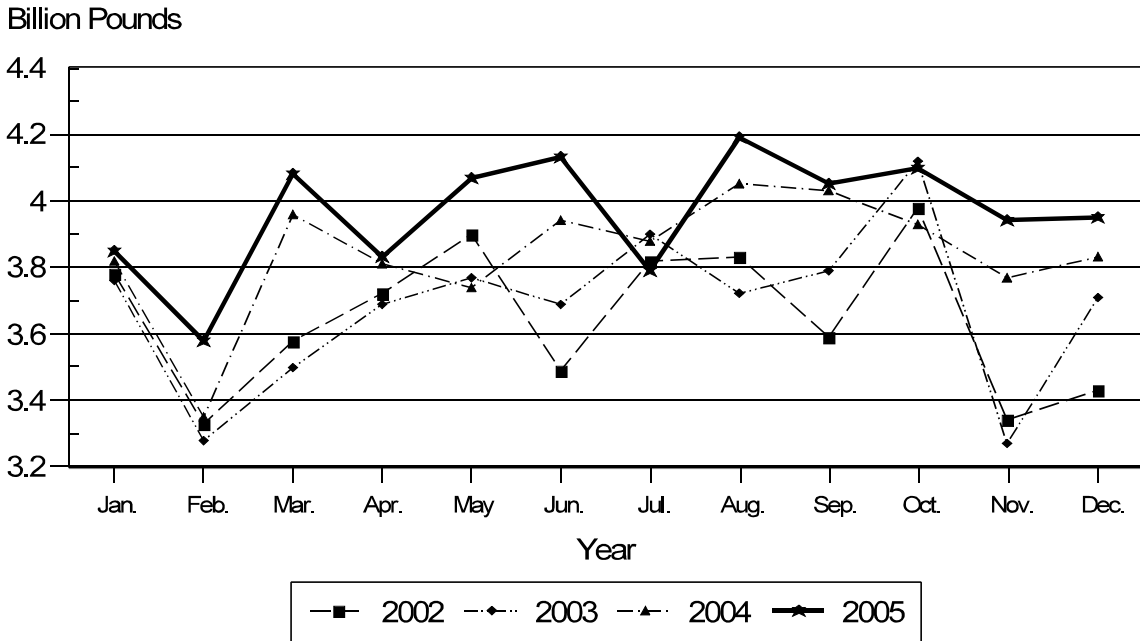
The preliminary total live weight of poultry inspected during December 2005 was 4.59 billion pounds, up 3 percent from 4.47 billion pounds a year ago. Young chickens inspected totaled 3.95 billion pounds, up 3 percent from December 2004, but mature chickens at 67.1 million pounds, were down 3 percent from the previous year. Turkey inspections totaled 555 million pounds, up 1 percent from a year ago. Ducks totaled 17.3 million pounds, up 7 percent from last year.

Young chickens slaughtered during December 2005 averaged 5.47 pounds per bird, up 3 percent from December 2004. The average live weight of mature chickens was 5.68 pounds per bird, up 1 percent from a year ago. Turkeys slaughtered during December 2005 averaged 28.6 pounds per bird, 3 percent above December 2004.

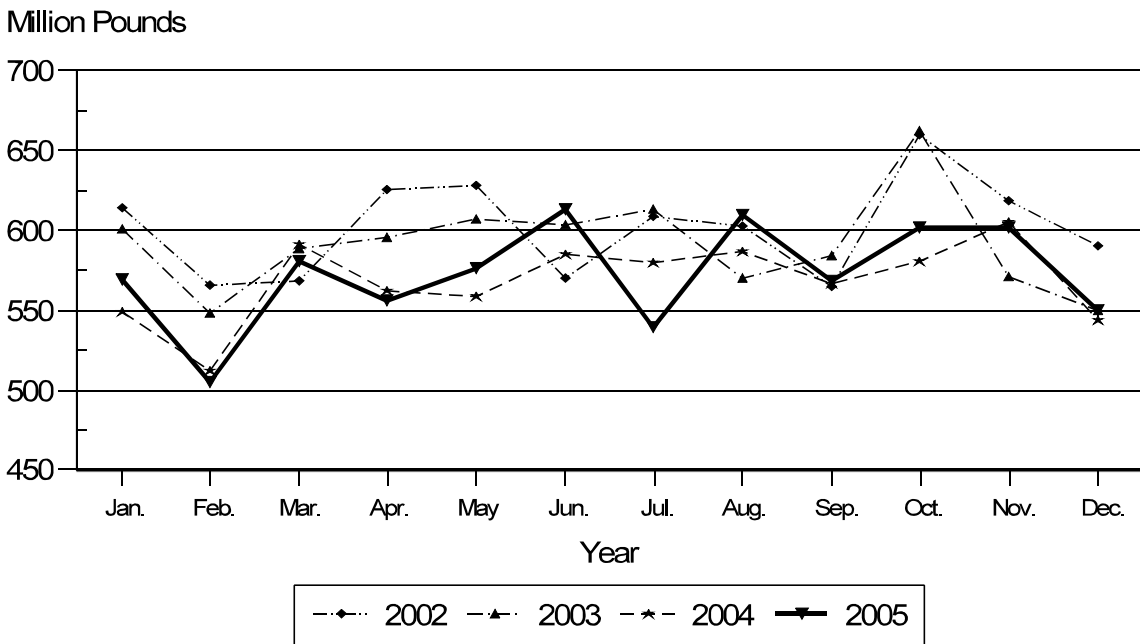
Ante-mortem condemnations during December 2005 totaled 17.5 million pounds. Condemnations were 0.38 percent of the live weight inspected, compared to 0.47 percent a year earlier. Post-mortem condemnations, at 47.6 million pounds (N.Y. dressed weight), were 1.15 percent of quantities inspected, compared with 1.28 percent a year earlier.

December 2005 contained 22 weekdays (including one holiday) and five Saturdays.
December 2004 contained 23 weekdays (including two holidays) and four Saturdays.

Young Chickens: Live Weight Slaughtered, by Month, 2002-2005



Young Turkeys: Live Weight Slaughtered, by Month, 2002-2005



Contents

	Page
Poultry Slaughter	1
Young Chickens Slaughtered	7
Young Turkeys (Mature) Slaughtered	13
Reliability Statement	15
Definitions	16

**Poultry Slaughter: Number, Live Weight, and Average Live Weight by Type,
United States, December 2005¹**

Commodity	Dec 2004	Nov 2005	Dec 2005	Percent of	
				Dec 2004	Nov 2005
	<i>1,000 Head</i>	<i>1,000 Head</i>	<i>1,000 Head</i>	<i>Percent</i>	<i>Percent</i>
Number Slaughtered					
Chickens					
Young	722,811	717,875	721,659	100	101
Mature	12,259	11,307	11,827	96	105
Light	6,140	5,467	5,735	93	105
Heavy	6,119	5,840	6,092	100	104
Total	735,070	729,182	733,486	100	101
Turkeys					
Young	19,641	22,429	19,249	98	86
Old	269	227	167	62	74
Total	19,910	22,656	19,416	98	86
Ducks	2,385	2,509	2,560	107	102
	<i>1,000 pounds</i>	<i>1,000 pounds</i>	<i>1,000 pounds</i>	<i>Percent</i>	<i>Percent</i>
Live Weight					
Chickens					
Young	3,834,267	3,941,740	3,949,597	103	100
Mature	68,934	65,080	67,146	97	103
Light	20,619	18,139	19,302	94	106
Heavy	48,315	46,941	47,844	99	102
Total	3,903,201	4,006,820	4,016,743	103	100
Turkeys					
Young	544,364	601,524	550,414	101	92
Old	7,290	6,019	4,303	59	71
Total	551,654	607,543	554,717	101	91
Ducks	16,175	17,002	17,285	107	102
Other Poultry	528	690	344	65	50
Total Poultry	4,471,558	4,632,055	4,589,089	103	99
	<i>Pounds</i>	<i>Pounds</i>	<i>Pounds</i>	<i>Percent</i>	<i>Percent</i>
Average Live Weight					
Chickens					
Young	5.30	5.49	5.47	103	100
Mature	5.62	5.76	5.68	101	99
Light	3.36	3.32	3.37	100	102
Heavy	7.90	8.04	7.85	99	98
Total	5.31	5.49	5.48	103	100
Turkeys					
Young	27.72	26.82	28.59	103	107
Old	27.08	26.52	25.61	95	97
Total	27.71	26.82	28.57	103	107
Ducks	6.78	6.78	6.75	100	100

See footnote(s) at end of table.

--continued

**Poultry Slaughter: Number, Live Weight, and Average Live Weight by Type,
United States, December 2005 ¹ (continued)**

Commodity	January to Date			Percent of	
	2003	2004	2005	2003	2004
	<i>1,000 Head</i>	<i>1,000 Head</i>	<i>1,000 Head</i>	<i>Percent</i>	<i>Percent</i>
Number Slaughtered					
Chickens					
Young	8,536,865	8,752,436	8,850,215	104	101
Mature	147,569	143,312	145,984	99	102
Light	76,605	72,438	73,073	95	101
Heavy	70,964	70,874	72,911	103	103
Total	8,684,434	8,895,748	8,996,199	104	101
Turkeys					
Young	264,753	251,563	245,186	93	97
Old	3,028	2,745	2,372	78	86
Total	267,781	254,308	247,558	92	97
Ducks	24,301	25,967	27,895	115	107
	<i>1,000 pounds</i>	<i>1,000 pounds</i>	<i>1,000 pounds</i>	<i>Percent</i>	<i>Percent</i>
Live Weight					
Chickens					
Young	44,317,531	46,109,201	47,555,969	107	103
Mature	824,973	811,674	830,375	101	102
Light	261,326	242,715	242,331	93	100
Heavy	563,647	568,959	588,004	104	103
Total	45,142,504	46,920,875	48,386,344	107	103
Turkeys					
Young	7,093,431	6,822,172	6,872,333	97	101
Old	81,480	73,697	62,201	76	84
Total	7,174,911	6,895,869	6,934,534	97	101
Ducks	160,871	174,231	187,741	117	108
Other Poultry	10,016	8,404	7,808	78	93
Total Poultry	52,488,302	53,999,379	55,516,427	106	103
	<i>Pounds</i>	<i>Pounds</i>	<i>Pounds</i>	<i>Percent</i>	<i>Percent</i>
Average Live Weight					
Chickens					
Young	5.19	5.27	5.37	103	102
Mature	5.59	5.66	5.69	102	101
Light	3.41	3.35	3.32	97	99
Heavy	7.94	8.03	8.07	102	100
Total	5.20	5.27	5.38	103	102
Turkeys					
Young	26.80	27.12	28.03	105	103
Old	26.92	26.85	26.22	97	98
Total	26.80	27.12	28.01	105	103
Ducks	6.62	6.71	6.73	102	100

¹ Federally inspected only.

**Poultry Slaughter: Chilled and Frozen, Pounds Certified by Type,
United States, December 2005 ¹**

Commodity	Dec 2004	Nov 2005	Dec 2005	Percent of	
				Dec 2004	Nov 2005
	<i>1,000 Pounds</i>	<i>1,000 Pounds</i>	<i>1,000 Pounds</i>	<i>Percent</i>	<i>Percent</i>
Chilled					
Chickens					
Young	2,582,848	2,643,627	2,655,683	103	100
Mature	42,178	39,836	41,315	98	104
Light	10,653	9,077	9,786	92	108
Heavy	31,525	30,759	31,529	100	103
Total	2,625,026	2,683,463	2,696,998	103	101
Turkeys					
Young	258,020	291,432	259,974	101	89
Old	4,382	3,443	2,537	58	74
Total	262,402	294,875	262,511	100	89
Ducks	6,104	5,950	6,105	100	103
Other Poultry	287	173	189	66	109
Total Poultry	2,893,819	2,984,461	2,965,803	102	99
Frozen					
Chickens					
Young	254,075	289,587	274,540	108	95
Mature	302	380	241	80	63
Heavy	302	380	241	80	63
Total	254,377	289,967	274,781	108	95
Turkeys					
Young	176,424	186,811	175,897	100	94
Old	1,139	1,160	725	64	63
Total	177,563	187,971	176,622	99	94
Ducks	5,322	6,251	6,213	117	99
Other Poultry	58	247	27	47	11
Total Poultry	437,320	484,436	457,643	105	94
Total Chilled and Frozen					
Chickens					
Young	2,836,923	2,933,214	2,930,223	103	100
Mature	42,480	40,216	41,556	98	103
Light	10,653	9,077	9,786	92	108
Heavy	31,827	31,139	31,770	100	102
Total	2,879,403	2,973,430	2,971,779	103	100
Turkeys					
Young	434,444	478,243	435,871	100	91
Old	5,521	4,603	3,262	59	71
Total	439,965	482,846	439,133	100	91
Ducks	11,426	12,201	12,318	108	101
Other Poultry	345	420	216	63	51
Total Poultry	3,331,139	3,468,897	3,423,446	103	99

See footnote(s) at end of table.

--continued

**Poultry Slaughter: Chilled and Frozen, Pounds Certified by Type,
United States, December 2005¹ (continued)**

Commodity	January to Date			Percent of	
	2003	2004	2005	2003	2004
	<i>1,000 Pounds</i>	<i>1,000 Pounds</i>	<i>1,000 Pounds</i>	<i>Percent</i>	<i>Percent</i>
Chilled					
Chickens					
Young	29,549,667	31,016,076	31,979,528	108	103
Mature	494,784	499,926	508,866	103	102
Light	126,961	122,614	123,611	97	101
Heavy	367,823	377,312	385,255	105	102
Total	30,044,451	31,516,002	32,488,394	108	103
Turkeys					
Young	2,959,743	2,952,855	3,115,474	105	106
Old	50,301	44,859	37,466	74	84
Total	3,010,044	2,997,714	3,152,940	105	105
Ducks	52,061	73,896	67,924	130	92
Other Poultry	2,841	2,624	2,380	84	91
Total Poultry	33,109,397	34,590,236	35,711,638	108	103
Frozen					
Chickens					
Young	3,199,329	3,047,263	3,366,638	105	110
Mature	7,871	4,373	4,547	58	104
Light	5,579	979	8		1
Heavy	2,292	3,394	4,539	198	134
Total	3,207,200	3,051,636	3,371,185	105	110
Turkeys					
Young	2,629,294	2,446,176	2,330,526	89	95
Old	11,019	10,103	9,599	87	95
Total	2,640,313	2,456,279	2,340,125	89	95
Ducks	66,946	54,134	66,714	100	123
Other Poultry	3,694	2,644	2,393	65	91
Total Poultry	5,918,153	5,564,693	5,780,417	98	104
Total Chilled and Frozen					
Chickens					
Young	32,748,996	34,063,339	35,346,166	108	104
Mature	502,655	504,299	513,413	102	102
Light	132,540	123,593	123,619	93	100
Heavy	370,115	380,706	389,794	105	102
Total	33,251,651	34,567,638	35,859,579	108	104
Turkeys					
Young	5,589,037	5,399,031	5,446,000	97	101
Old	61,320	54,962	47,065	77	86
Total	5,650,357	5,453,993	5,493,065	97	101
Ducks	119,007	128,030	134,638	113	105
Other Poultry	6,535	5,268	4,773	73	91
Total Poultry	39,027,550	40,154,929	41,492,055	106	103

¹ Ready-to-cook weights.

**Poultry Slaughter: Ante-Mortem Condemnations by Type,
United States, December 2005 ¹**

Commodity	Dec 2004	Nov 2005	Dec 2005	Percent of		January to Date		Percent of 2004
				Dec 2004	Nov 2005	2004	2005	
	<i>1,000 Pounds</i>	<i>1,000 Pounds</i>	<i>1,000 Pounds</i>	<i>Percent</i>	<i>Percent</i>	<i>1,000 Pounds</i>	<i>1,000 Pounds</i>	<i>Percent</i>
Live Weight								
Chickens								
Young	18,439	12,733	14,904	81	117	188,010	169,008	90
Mature	974	736	910	93	124	12,151	12,572	103
Light	313	271	310	99	114	4,932	4,634	94
Heavy	661	465	600	91	129	7,219	7,938	110
Total	19,413	13,469	15,814	81	117	200,161	181,580	91
Turkeys								
Young	1,493	1,508	1,600	107	106	23,976	19,203	80
Old	46	52	74	161	142	498	591	119
Total	1,539	1,560	1,674	109	107	24,474	19,794	81
Ducks	159	27	33	21	122	551	390	71
Other Poultry	1	1				28	19	68
Total Poultry	21,112	15,057	17,521	83	116	225,214	201,783	90
	<i>Percent</i>	<i>Percent</i>	<i>Percent</i>	<i>Percent</i>	<i>Percent</i>	<i>Percent</i>	<i>Percent</i>	<i>Percent</i>
Percent of Total Weight Condemned ²								
Chickens								
Young	0.48	0.32	0.38	79	119	0.41	0.36	88
Mature	1.41	1.13	1.36	96	120	1.50	1.51	101
Light	1.52	1.49	1.61	106	108	2.03	1.91	94
Heavy	1.37	0.99	1.26	92	127	1.27	1.35	106
Total	0.50	0.34	0.39	78	115	0.43	0.38	88
Turkeys								
Young	0.27	0.25	0.29	107	116	0.35	0.28	80
Old	0.63	0.86	1.72	273	200	0.68	0.95	140
Total	0.28	0.26	0.30	107	115	0.35	0.29	83
Ducks	0.98	0.15	0.19	19	127	0.32	0.21	66
Other Poultry	0.12	0.14				0.33	0.24	73
Total Poultry	0.47	0.33	0.38	81	115	0.42	0.36	86

¹ Federally inspected only.

² Pounds condemned as a percent of live weight pounds inspected.

**Poultry Slaughter: Post-Mortem Condemnations by Type,
United States, December 2005 ¹**

Commodity	Dec 2004	Nov 2005	Dec 2005	Percent of		January to Date		Percent of 2004
				Dec 2004	Nov 2005	2004	2005	
	<i>1,000 Pounds</i>	<i>1,000 Pounds</i>	<i>1,000 Pounds</i>	<i>Percent</i>	<i>Percent</i>	<i>1,000 Pounds</i>	<i>1,000 Pounds</i>	<i>Percent</i>
N.Y. Dressed Weight								
Chickens								
Young	38,637	32,288	36,249	94	112	442,374	414,925	94
Mature	3,044	3,136	3,164	104	101	36,662	37,383	102
Light	1,566	1,573	1,582	101	101	17,658	18,793	106
Heavy	1,478	1,563	1,582	107	101	19,004	18,590	98
Total	41,681	35,424	39,413	95	111	479,036	452,308	94
Turkeys								
Young	9,002	7,999	7,544	84	94	118,716	101,335	85
Old	369	308	236	64	77	4,210	3,525	84
Total	9,371	8,307	7,780	83	94	122,926	104,860	85
Ducks	474	405	427	90	105	4,249	4,505	106
Other Poultry	6	6	4	67	67	96	81	84
Total Poultry	51,532	44,142	47,624	92	108	606,307	451,754	75
	<i>Percent</i>	<i>Percent</i>	<i>Percent</i>	<i>Percent</i>	<i>Percent</i>	<i>Percent</i>	<i>Percent</i>	<i>Percent</i>
Percent of Total Weight Condemned ²								
Chickens								
Young	1.12	0.91	1.02	91	112	1.07	0.97	91
Mature	4.91	5.35	5.24	107	98	5.02	5.00	100
Light	8.44	9.63	9.11	108	95	8.08	8.62	107
Heavy	3.40	3.70	3.67	108	99	3.71	3.51	95
Total	1.19	0.98	1.09	92	111	1.13	1.04	92
Turkeys								
Young	1.84	1.48	1.52	83	103	1.93	1.64	85
Old	5.63	5.69	6.07	108	107	6.35	6.30	99
Total	1.89	1.52	1.56	83	103	1.98	1.68	85
Ducks	3.26	2.64	2.74	84	104	2.71	2.67	99
Other Poultry	1.25	0.80	0.65	52	81	1.27	1.15	91
Total Poultry	1.28	1.06	1.15	90	108	1.25	1.12	90

¹ Federally inspected only.

² Pounds condemned as a percent of N.Y. dressed weight of quantity inspected.

**Young Chickens Slaughtered: Number, Live Weight, and Average Live Weight,
by State and United States, December 2005**

State	Number Slaughtered		Live Weight		Average Live Weight	
	November	December	November	December	November	December
	<i>1,000 Head</i>	<i>1,000 Head</i>	<i>1,000 Pounds</i>	<i>1,000 Pounds</i>	<i>Pounds</i>	<i>Pounds</i>
AL	89,398	86,799	483,246	465,311	5.41	5.36
AR	96,245	92,967	508,183	494,882	5.28	5.32
CA	*	*	*	*	*	*
DE	24,771	24,731	167,796	170,519	6.77	6.89
FL	*	*	*	*	*	*
GA	101,922	104,801	534,431	539,462	5.24	5.15
KY	23,549	23,005	130,580	126,556	5.54	5.50
LA	15,639	18,117	87,847	101,281	5.62	5.59
MD	12,246	12,372	60,158	59,632	4.91	4.82
MS	58,728	61,570	331,162	353,818	5.64	5.75
MO	33,448	33,926	158,285	156,614	4.73	4.62
NJ	*	*	*	*	*	*
NY	*	*	*	*	*	*
NC	55,701	57,063	380,637	387,963	6.83	6.80
OH	2,559	3,672	12,476	19,933	4.88	5.43
PA	9,802	9,741	54,245	54,952	5.53	5.64
SC	22,055	21,419	136,878	131,538	6.21	6.14
TN	21,693	22,361	112,165	112,901	5.17	5.05
TX	55,770	51,222	293,007	266,938	5.25	5.21
VA	26,074	26,556	138,461	139,521	5.31	5.25
WA	*	*	*	*	*	*
Oth Sts	68,275	71,337	352,183	367,776	5.16	5.16
US	717,875	721,659	3,941,740	3,949,597	5.49	5.47

* Included in "Other States" to avoid disclosing individual operations.

**Young Chickens Slaughtered: Pounds Certified and Post-Mortem Condemnations
by State and United States, December 2005**

State	Total Chilled and Frozen Pounds Certified ¹		Post-Mortem Condemnations			
	November	December	N.Y. Dressed Weight		Percent ²	
			November	December	November	December
	<i>1,000 Pounds</i>	<i>1,000 Pounds</i>	<i>1,000 Pounds</i>	<i>1,000 Pounds</i>	<i>Percent</i>	<i>Percent</i>
AL	358,820	345,680	4,318	4,396	0.99	1.05
AR	377,153	365,125	4,249	4,716	0.93	1.06
CA	*	*	*	*	*	*
DE	121,586	122,962	1,894	2,312	1.25	1.51
FL	*	*	*	*	*	*
GA	398,710	400,992	3,194	3,316	0.66	0.68
KY	96,525	93,430	881	1,215	0.75	1.07
LA	63,904	74,343	495	679	0.63	0.74
MD	44,105	43,659	564	769	1.04	1.43
MS	253,774	269,421	2,801	3,370	0.94	1.06
MO	116,481	114,953	1,157	1,336	0.81	0.95
NJ	*	*	*	*	*	*
NY	*	*	*	*	*	*
NC	291,093	296,028	3,588	3,972	1.05	1.14
OH	9,208	14,753	115	193	1.03	1.08
PA	37,737	38,256	741	854	1.52	1.73
SC	102,016	98,518	726	779	0.59	0.66
TN	81,839	82,304	1,045	1,151	1.04	1.13
TX	225,762	204,483	2,186	2,233	0.83	0.93
VA	97,112	97,130	912	1,079	0.73	0.86
WA	*	*	*	*	*	*
Oth Sts	257,389	268,186	3,422	3,879	1.08	1.17
US	2,933,214	2,930,223	32,288	36,249	0.91	1.02

* Included in "Other States" to avoid disclosing individual operations.

¹ Ready-to-cook weights.

² Pounds condemned as percent of equivalent N.Y. dressed weight of quantity inspected.

**Chickens Slaughtered: Number Condemned Post-Mortem by Cause, by Type,
by State and United States, November 2005**

State	Tuber- culosis	Leukosis	Septicemia	Airsac- culitis	Synovitis	Tumors
	<i>Number of Head</i>	<i>Number of Head</i>	<i>Number of Head</i>	<i>Number of Head</i>	<i>Number of Head</i>	<i>Number of Head</i>
Young Birds						
AL		161	106,011	50,034	798	4,082
AR		*	150,403	50,155	*	3,684
CA		*	*	*	*	*
DE		*	115,656	27,192	*	6,330
FL		*	*	*	*	*
GA		434	73,334	42,551	158	4,862
IN		*	*	*	*	*
KY		*	37,835	*	*	*
LA		60	14,562	4,340	*	343
MD		447	33,416	*	*	*
MS		*	59,315	35,161	420	1,395
MO		1,073	73,144	10,412	180	1,462
NJ		*	*	*	*	*
NY		*	*	*	*	*
NC		389	91,989	30,325	*	*
OH			4,290	*	*	47
PA		71	29,764	13,298	*	464
SC		*	10,896	4,542	14	*
TN		*	64,867	28,726	181	726
TX		160	67,901	35,618	*	2,095
VA		313	45,414	12,128	50	*
WA		*	*	*	*	*
Oth Sts		7,783	195,541	76,177	5,659	30,292
US		10,891	1,174,338	420,659	7,460	55,782
Mature Birds						
Light		2,898	214,966	46,381	157	67,767
Heavy		624	51,400	2,141	44	6,279
US		3,522	266,366	48,522	201	74,046

See footnote(s) at end of table.

--continued

**Chickens Slaughtered: Number Condemned Post-Mortem by Cause, by Type,
by State and United States, November 2005 (continued)**

	Bruises	Cadaver	Contam-ination	Overscald	Other	Total ¹
	<i>Number of Head</i>	<i>Number of Head</i>	<i>Number of Head</i>	<i>Number of Head</i>	<i>Number of Head</i>	<i>Number of Head</i>
Young Birds						
AL	2,870	16,930	16,207	6,849	147,430	351,372
AR	4,322	20,714	24,798	4,325	83,407	344,631
CA	*	*	*	*	*	*
DE	2,675	8,506	10,456	4,504	36,904	217,992
FL	*	*	*	*	*	*
GA	1,924	29,342	9,017	4,849	85,391	251,862
IN	*	*	*	*	*	*
KY	*	3,992	3,360	*	*	*
LA	287	3,143	1,856	*	*	29,167
MD	*	5,517	*	*	*	*
MS	1,962	8,669	7,035	*	86,147	201,437
MO	1,084	3,649	7,786	*	*	157,757
NJ	*	*	*	*	*	*
NY	*	*	*	*	*	*
NC	2,033	19,137	13,618	5,678	96,906	274,735
OH	60	*	*	*	*	12,580
PA	844	3,068	9,549	*	9,601	67,040
SC	398	1,505	*	2,652	29,745	53,783
TN	1,082	10,228	6,783	*	*	128,353
TX	743	4,864	6,713	*	39,782	158,833
VA	1,097	4,221	5,011	2,510	*	107,499
WA	*	*	*	*	*	*
Oth Sts	4,588	14,559	37,353	13,348	258,254	573,926
US	25,969	158,044	159,542	44,715	873,567	2,930,967
Mature Birds						
Light	10,562	5,510	134,558	1,533	57,297	541,629
Heavy	1,122	9,276	16,641	651	67,382	155,560
US	11,684	14,786	151,199	2,184	124,679	697,189

* Included in "Other States" to avoid disclosing individual operations.

¹ The sum of the individual diseases does not add across to the total for "Other States".

**Chickens Slaughtered: Number Condemned Post-Mortem by Cause, by Type,
by State and United States, December 2005**

State	Tuber- culosis	Leukosis	Septicemia	Airsac- culitis	Synovitis	Tumors
	<i>Number of Head</i>	<i>Number of Head</i>	<i>Number of Head</i>	<i>Number of Head</i>	<i>Number of Head</i>	<i>Number of Head</i>
Young Birds						
AL		*	109,791	77,480	1,133	4,667
AR		847	170,448	71,848	1,696	4,073
CA		*	*	*	*	*
DE		*	127,456	43,647	*	7,007
FL		*	*	*	*	*
GA		456	78,949	53,025	168	5,722
IN		*	*	*	*	*
KY		*	37,904	*	33	*
LA		*	20,824	7,231	*	404
MD		642	43,389	*	*	*
MS		*	66,809	53,743	368	1,618
MO		800	94,620	17,855	294	1,544
NJ		*	*	*	*	*
NY		*	*	*	*	*
NC		380	98,824	46,222	*	*
OH			6,496	*	*	86
PA		117	32,949	20,174	441	481
SC		*	10,507	4,930	15	*
TN		357	69,484	36,376	87	993
TX		140	67,371	48,115	*	2,120
VA		*	54,695	*	*	*
WA		*	*	*	*	*
Oth Sts		11,703	231,561	228,951	3,472	32,855
US		15,442	1,322,077	709,597	7,707	61,570
Mature Birds						
Light		3,274	216,823	43,395	1,040	89,449
Heavy		749	48,400	1,461	21	5,991
US		4,023	265,223	44,856	1,061	95,440

See footnote(s) at end of table.

--continued

**Chickens Slaughtered: Number Condemned Post-Mortem by Cause, by Type,
by State and United States, December 2005 (continued)**

	Bruises	Cadaver	Contam-ination	Overscald	Other	Total ¹
	<i>Number of Head</i>	<i>Number of Head</i>	<i>Number of Head</i>	<i>Number of Head</i>	<i>Number of Head</i>	<i>Number of Head</i>
Young Birds						
AL	2,793	15,393	15,297	*	165,089	399,980
AR	4,466	19,051	24,741	1,849	88,902	387,921
CA	*	*	*	*	*	*
DE	2,721	8,610	10,920	*	53,016	267,571
FL	*	*	*	*	*	*
GA	2,012	36,015	8,906	3,527	98,332	287,112
IN	*	*	*	*	*	*
KY	*	4,501	2,929	*	*	*
LA	336	3,354	2,783	110	2,500	37,654
MD	*	7,864	*	*	*	*
MS	2,095	8,775	6,678	*	114,087	255,729
MO	1,276	4,881	7,672	*	*	206,443
NJ	*	*	*	*	*	*
NY	*	*	*	*	*	*
NC	2,056	19,891	12,524	7,234	94,083	296,286
OH	*	*	396	*	*	15,016
PA	1,035	3,051	11,249	48	10,910	80,455
SC	347	1,580	*	2,725	33,230	57,248
TN	1,187	9,207	6,062	*	*	141,683
TX	775	4,600	7,614	*	51,023	183,868
VA	1,167	5,783	3,923	*	*	139,464
WA	*	*	*	*	*	*
Oth Sts	5,038	20,681	38,465	28,651	293,692	769,671
US	27,304	173,237	160,159	44,144	1,004,864	3,526,101
Mature Birds						
Light	8,373	6,708	121,566	933	60,346	551,907
Heavy	993	6,697	13,489	515	76,115	154,431
US	9,366	13,405	135,055	1,448	136,461	706,338

* Included in "Other States" to avoid disclosing individual operations.

¹ The sum of the individual diseases does not add across to the total for "Other States".

Young Turkeys (Mature) Slaughtered: Number, Live Weight, and Average Live Weight, by State and United States, December 2005

State	Number Slaughtered		Live Weight		Average Live Weight	
	November	December	November	December	November	December
	<i>1,000 Head</i>	<i>1,000 Head</i>	<i>1,000 Pounds</i>	<i>1,000 Pounds</i>	<i>Pounds</i>	<i>Pounds</i>
AR	2,933	2,451	56,450	48,613	19.24	19.84
MN	3,169	2,667	84,071	75,615	26.53	28.35
MO	1,439	1,413	45,431	46,550	31.58	32.95
Oth Sts	14,888	12,718	415,572	379,636	27.91	29.85
US	22,429	19,249	601,524	550,414	26.82	28.59

Young Turkeys (Mature) Slaughtered: Pounds Certified and Post-Mortem Condemnations, by State and United States, December 2005

State	Total Chilled and Frozen Pounds Certified ¹		Post-Mortem Condemnations			
			N.Y. Dressed Weight		Percent ²	
	November	December	November	December	November	December
	<i>1,000 Pounds</i>	<i>1,000 Pounds</i>	<i>1,000 Pounds</i>	<i>1,000 Pounds</i>	<i>Percent</i>	<i>Percent</i>
AR	46,016	39,646	768	695	1.51	1.59
MN	67,405	60,372	1,393	1,287	1.84	1.89
MO	35,833	36,625	588	628	1.44	1.50
Oth Sts	328,989	299,228	5,250	4,934	1.40	1.44
US	478,243	435,871	7,999	7,544	1.48	1.52

¹ Ready-to-cook weights.

² Pounds condemned as percent of equivalent N.Y. dressed weight of quantity inspected.

**Turkeys Slaughtered: Number Condemned Post-Mortem by Cause, by Type,
United States, November 2005**

State	Tuber- culosis	Leukosis	Septicemia	Airsac- culitis	Synovitis	Tumors
	<i>Number of Head</i>	<i>Number of Head</i>	<i>Number of Head</i>	<i>Number of Head</i>	<i>Number of Head</i>	<i>Number of Head</i>
Young (Mature) US		50	75,063	8,476	3,888	81
Old (Breeders) US			2,965	540		130
	Bruises	Cadaver	Contam- ination	Overscald	Other	Total
	<i>Number of Head</i>	<i>Number of Head</i>	<i>Number of Head</i>	<i>Number of Head</i>	<i>Number of Head</i>	<i>Number of Head</i>
Young (Mature) US	564	5,016	4,616	2,646	20,910	121,310
Old (Breeders) US	26	205	160	17	2,344	6,387

**Turkeys Slaughtered: Number Condemned Post-Mortem by Cause, by Type,
United States, December 2005**

State	Tuber- culosis	Leukosis	Septicemia	Airsac- culitis	Synovitis	Tumors
	<i>Number of Head</i>	<i>Number of Head</i>	<i>Number of Head</i>	<i>Number of Head</i>	<i>Number of Head</i>	<i>Number of Head</i>
Young (Mature) US		150	72,392	7,646	4,061	198
Old (Breeders) US			2,145	289	1	104
	Bruises	Cadaver	Contam- ination	Overscald	Other	Total
	<i>Number of Head</i>	<i>Number of Head</i>	<i>Number of Head</i>	<i>Number of Head</i>	<i>Number of Head</i>	<i>Number of Head</i>
Young (Mature) US	440	4,149	4,541	953	19,815	114,345
Old (Breeders) US	11	61	87	9	2,165	4,872

Poultry Slaughter Estimates

Data Sources: Data for poultry slaughter estimates are collected by inspectors of the Food Safety and Inspection Service (FSIS), USDA for all Federally Inspected (FI) plants using computers. Over 99 percent of the total U.S. slaughter for any species is under FI. The number of head slaughtered daily, by species and class, as well as condemnations and total live and dressed weights are obtained by shift for each plant. Approximately 350 plants in the U.S. are operated under Federal Inspection.

Revision Policy: Revisions are generally the result of late reports received by FSIS from plants and are usually less than one-half of 1 percent of the preliminary totals. Revisions for the previous month and year-to-date totals are published in each monthly release. Final data are published in the annual summary released in April and reflect any late reports or corrections which occurred after the monthly revisions were published.

Procedures and Reliability: Plant inspectors submit data electronically for each shift a plant operates. An edit provides checks for the detection of errors such as invalid plant information, duplication, and erroneous data. Data are accumulated to monthly totals for this release.

Data for major slaughter plants with missing reports are adjusted prior to publication to assure that all plants slaughtering a significant portion of a specific class are accounted for. Estimates for missing shifts are made only after verifying that the plant was in operation. Adjustments are based on an “normal” shift’s data. Late reports replace imputed data as they become available. While there is a varying degree of incompleteness from month to month, it has only a minimal impact on the published totals.

Poultry slaughter estimates are based on a census of operating plants and, therefore, have no sampling error. However, they may be subject to errors such as omissions, duplications, and mistakes in reporting, recording, and processing the data. These errors are minimized through strict quality controls in the edit and summarization process, and a careful review of all reported data for consistency and reasonableness.

State data are published for selected states for young chickens and young turkeys. State data are not published if less than three plants operate for a species in a State, or if one plant has 60 percent or more of the total live weight for that species. Data for all states not published are included in the “Other States” category. Also included in this category are data for published states that are confidential (denoted by an *). Data for all states are included in the U.S. totals. For 2004, young chickens were killed in 34 states, young turkeys in 22 states.

Definitions

Ante-Mortem Condemnations - Birds condemned prior to their entry into the slaughter plant.

Certified Ready-to-Cook - The weight of poultry certified wholesome by inspection after post-mortem condemnation pounds are removed. Ready-to-cook represents poultry meat ready for the marketing channel.

Ducks - Includes all ducks regardless of age and weight.

Fryer-Roaster Turkeys - Young immature birds, usually under 16 weeks of age. Included with young turkeys.

Mature Chickens - Fowl from breeder and market egg flocks and stags and cocks.

New York Dressed Weight - Carcass weight after only feathers and blood are removed. This weight is approximately 90% of live weight.

Old Turkeys (Breeders) - Fully matured birds held for egg production, usually over 15 months of age.

Other Poultry - Includes all other ready-to-cook products which bear the USDA Inspected for Wholesomeness legend.

Post-Mortem Condemnations - Carcasses or parts condemned by the inspector because of disease or mishandling and removed from the slaughter line and destroyed.

Young Chickens - Commercially grown broilers-fryers and other young immature birds such as roasters and capons.

Young Turkeys (Mature) - Young birds grown to a matured market age, about 5 months.

ACCESS TO REPORTS!!

For your convenience, there are several ways to obtain NASS reports, data products, and services:

INTERNET ACCESS

All NASS reports are available free of charge on the worldwide Internet. For access, connect to the Internet and go to the NASS Home Page at: www.nass.usda.gov.

E-MAIL SUBSCRIPTION

All NASS reports are available by subscription free of charge direct to your e-mail address. Starting with the NASS Home Page at www.nass.usda.gov, under the right navigation, *Receive reports by Email*, click on **National** or **State**. Follow the instructions on the screen.

PRINTED REPORTS OR DATA PRODUCTS

CALL OUR TOLL-FREE ORDER DESK: 800-999-6779 (U.S. and Canada)
Other areas, please call 703-605-6220 FAX: 703-605-6900
(Visa, MasterCard, check, or money order acceptable for payment.)

ASSISTANCE

For **assistance** with general agricultural statistics or further information about NASS or its products or services, contact the **Agricultural Statistics Hotline** at **800-727-9540**, 7:30 a.m. to 4:00 p.m. ET, or e-mail: nass@nass.usda.gov.

The U.S. Department of Agriculture (USDA) prohibits discrimination in all its programs and activities on the basis of race, color, national origin, age, disability, and where applicable, sex, marital status, familial status, parental status, religion, sexual orientation, genetic information, political beliefs, reprisal, or because all or part of an individual's income is derived from any public assistance program. (Not all prohibited bases apply to all programs.) Persons with disabilities who require alternative means for communication of program information (Braille, large print, audiotape, etc.) should contact USDA's TARGET Center at (202) 720-2600 (voice and TDD).

To file a complaint of discrimination, write to USDA, Director, Office of Civil Rights, 1400 Independence Avenue, S.W., Washington, D.C. 20250-9410, or call (800) 795-3272 (voice) or (202) 720-6382 (TDD). USDA is an equal opportunity provider and employer.