



# NASS

FACT FINDERS FOR AGRICULTURE  
UNITED STATES DEPARTMENT OF AGRICULTURE

Washington, D.C.

# Poultry Slaughter

---

Released February 28, 2006, by the National Agricultural Statistics Service (NASS), Agricultural Statistics Board, U.S. Department of Agriculture. For information on *Poultry Slaughter* call John Lange at 202-720-0585, office hours 7:00 a.m. to 4:30 p.m. ET.

## Ready-to-Cook Weight Up 5 Percent

Poultry certified wholesome during January 2006 (ready-to-cook weight) totaled 3.55 billion pounds, up 5 percent from the amount certified in January 2005. Updated totals for December 2005 show that 3.41 billion pounds were certified.

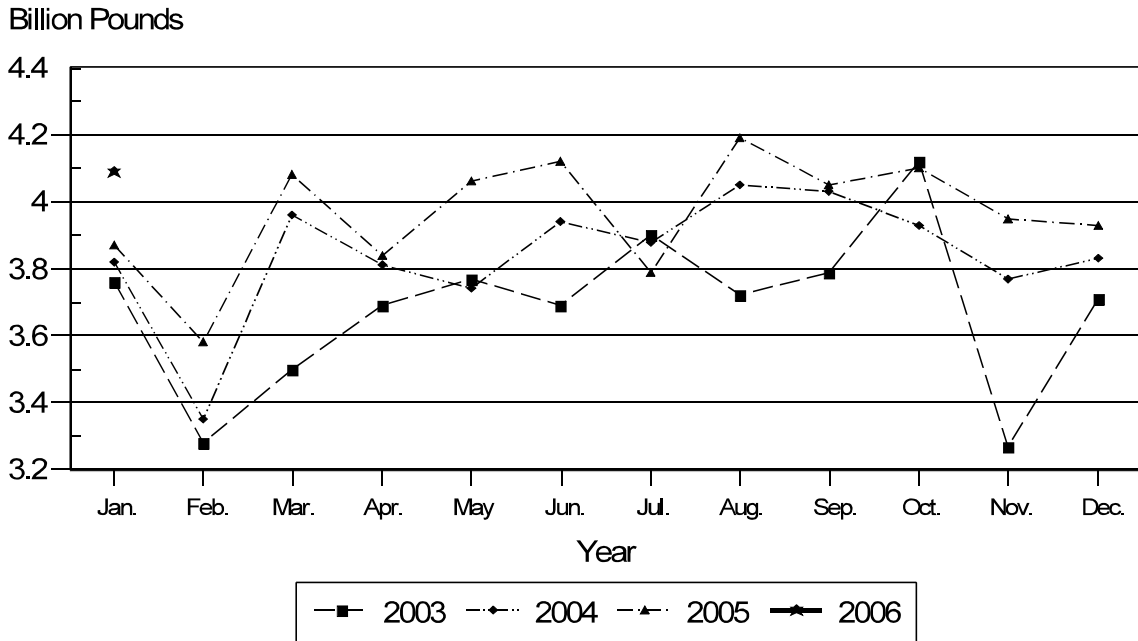
The preliminary total live weight of poultry inspected during January 2006 was 4.75 billion pounds, up 5 percent from 4.52 billion pounds a year ago. Young chickens inspected totaled 4.09 billion pounds, up 6 percent from January 2005, and mature chickens, at 70.1 million pounds, were up 12 percent from the previous year. Turkey inspections totaled 566 million pounds, down 2 percent from a year ago. Ducks totaled 15.9 million pounds, up 2 percent from last year.

Young chickens slaughtered during January 2006 averaged 5.50 pounds per bird, up 2 percent from January 2005. The average live weight of mature chickens was 5.58 pounds per bird, down 1 percent from a year ago. Turkeys slaughtered during January 2006 averaged 30.3 pounds per bird, 2 percent above January 2005.

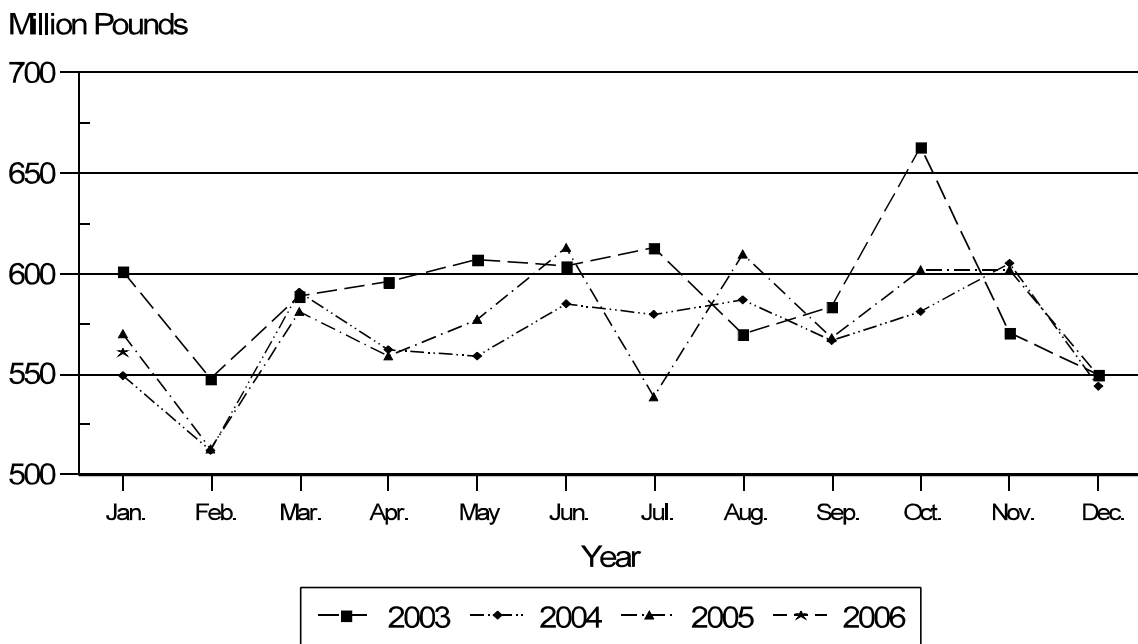
Ante-mortem condemnations during January 2006 totaled 15.5 million pounds. Condemnations were 0.33 percent of the live weight inspected, compared to 0.38 percent a year earlier. Post-mortem condemnations, at 49.3 million pounds (N.Y. dressed weight), were 1.15 percent of quantities inspected, compared with 1.20 percent a year earlier.

January 2006 contained 22 weekdays (including two holidays) and four Saturdays. January 2005 contained 21 weekdays (including one holiday) and five Saturdays.

## Young Chickens: Live Weight Slaughtered, by Month, 2003-2006



## Young Turkeys: Live Weight Slaughtered, by Month, 2003-2006



## Contents

	<b>Page</b>
Poultry Slaughter .....	1
Young Chickens Slaughtered .....	7
Young Turkeys (Mature) Slaughtered .....	13
Reliability Statement .....	15
Definitions .....	16

**Poultry Slaughter: Number, Live Weight, and Average Live Weight by Type,  
United States, January 2005<sup>1</sup>**

Commodity	Jan 2005	Dec 2005	Jan 2006	Percent of	
				Jan 2005	Dec 2005
	<i>1,000 Head</i>	<i>1,000 Head</i>	<i>1,000 Head</i>	<i>Percent</i>	<i>Percent</i>
<b>Number Slaughtered</b>					
Chickens					
Young	719,859	717,637	744,669	103	104
Mature	11,164	11,827	12,568	113	106
Light	5,848	5,735	6,437	110	112
Heavy	5,316	6,092	6,131	115	101
Total	731,023	729,464	757,237	104	104
Turkeys					
Young	19,219	19,195	18,521	96	96
Old	197	167	191	97	114
Total	19,416	19,362	18,712	96	97
Ducks	2,303	2,555	2,347	102	92
	<i>1,000 pounds</i>	<i>1,000 pounds</i>	<i>1,000 pounds</i>	<i>Percent</i>	<i>Percent</i>
<b>Live Weight</b>					
Chickens					
Young	3,866,549	3,931,183	4,094,065	106	104
Mature	62,665	67,146	70,120	112	104
Light	19,481	19,302	21,299	109	110
Heavy	43,184	47,844	48,821	113	102
Total	3,929,214	3,998,329	4,164,185	106	104
Turkeys					
Young	570,418	548,561	560,735	98	102
Old	5,599	4,303	5,226	93	121
Total	576,017	552,864	565,961	98	102
Ducks	15,585	17,238	15,882	102	92
Other Poultry	363	372	292	80	78
Total Poultry	4,521,179	4,568,803	4,746,320	105	104
	<i>Pounds</i>	<i>Pounds</i>	<i>Pounds</i>	<i>Percent</i>	<i>Percent</i>
<b>Average Live Weight</b>					
Chickens					
Young	5.37	5.48	5.50	102	100
Mature	5.61	5.68	5.58	99	98
Light	3.33	3.37	3.31	99	98
Heavy	8.12	7.85	7.96	98	101
Total	5.37	5.48	5.50	102	100
Turkeys					
Young	29.68	28.58	30.28	102	106
Old	28.42	25.61	27.36	96	107
Total	29.67	28.55	30.25	102	106
Ducks	6.77	6.75	6.77	100	100

See footnote(s) at end of table.

--continued

**Poultry Slaughter: Number, Live Weight, and Average Live Weight by Type,  
United States, January 2006 <sup>1</sup> (continued)**

Commodity	January to Date			Percent of	
	2004	2005	2006	2004	2005
	<i>1,000 Head</i>	<i>1,000 Head</i>	<i>1,000 Head</i>	<i>Percent</i>	<i>Percent</i>
<b>Number Slaughtered</b>					
Chickens					
Young	720,976	719,859	744,669	103	103
Mature	11,325	11,164	12,568	111	113
Light	5,838	5,848	6,437	110	110
Heavy	5,487	5,316	6,131	112	115
Total	732,301	731,023	757,237	103	104
Turkeys					
Young	19,946	19,219	18,521	93	96
Old	207	197	191	92	97
Total	20,153	19,416	18,712	93	96
Ducks	2,153	2,303	2,347	109	102
	<i>1,000 pounds</i>	<i>1,000 pounds</i>	<i>1,000 pounds</i>	<i>Percent</i>	<i>Percent</i>
<b>Live Weight</b>					
Chickens					
Young	3,823,817	3,866,549	4,094,065	107	106
Mature	64,110	62,665	70,120	109	112
Light	20,188	19,481	21,299	106	109
Heavy	43,922	43,184	48,821	111	113
Total	3,887,927	3,929,214	4,164,185	107	106
Turkeys					
Young	549,136	570,418	560,735	102	98
Old	5,995	5,599	5,226	87	93
Total	555,131	576,017	565,961	102	98
Ducks	14,608	15,585	15,882	109	102
Other Poultry	222	363	292	132	80
Total Poultry	4,457,888	4,521,179	4,746,320	106	105
	<i>Pounds</i>	<i>Pounds</i>	<i>Pounds</i>	<i>Percent</i>	<i>Percent</i>
<b>Average Live Weight</b>					
Chickens					
Young	5.30	5.37	5.50	104	102
Mature	5.66	5.61	5.58	99	99
Light	3.46	3.33	3.31	96	99
Heavy	8.00	8.12	7.96	100	98
Total	5.31	5.37	5.50	104	102
Turkeys					
Young	27.53	29.68	30.28	110	102
Old	28.92	28.42	27.36	95	96
Total	27.55	29.67	30.25	110	102
Ducks	6.79	6.77	6.77	100	100

<sup>1</sup> Federally inspected only.

**Poultry Slaughter: Chilled and Frozen, Pounds Certified by Type,  
United States, January 2006 <sup>1</sup>**

Commodity	Jan 2005	Dec 2005	Jan 2006	Percent of	
				Jan 2005	Dec 2005
	<i>1,000 Pounds</i>	<i>1,000 Pounds</i>	<i>1,000 Pounds</i>	<i>Percent</i>	<i>Percent</i>
<b>Chilled</b>					
Chickens					
Young	2,626,172	2,643,826	2,765,410	105	105
Mature	38,483	41,315	42,326	110	102
Light	10,163	9,786	10,683	105	109
Heavy	28,320	31,529	31,643	112	100
Total	2,664,655	2,685,141	2,807,736	105	105
Turkeys					
Young	257,398	259,868	245,238	95	94
Old	3,970	2,537	3,306	83	130
Total	261,368	262,405	248,544	95	95
Ducks	5,704	6,075	5,788	101	95
Other Poultry	195	204	164	84	80
<b>Total Poultry</b>	<b>2,931,922</b>	<b>2,953,825</b>	<b>3,062,232</b>	<b>104</b>	<b>104</b>
<b>Frozen</b>					
Chickens					
Young	257,921	272,975	282,956	110	104
Mature	228	241	432	189	179
Light	2		2	100	
Heavy	226	241	430	190	178
Total	258,149	273,216	283,388	110	104
Turkeys					
Young	193,748	174,572	197,737	102	113
Old	230	725	656	285	90
Total	193,978	175,297	198,393	102	113
Ducks	5,450	6,213	5,563	102	90
Other Poultry	29	27	20	69	74
<b>Total Poultry</b>	<b>457,606</b>	<b>454,753</b>	<b>487,364</b>	<b>107</b>	<b>107</b>
<b>Total Chilled and Frozen</b>					
Chickens					
Young	2,884,093	2,916,801	3,048,366	106	105
Mature	38,711	41,556	42,758	110	103
Light	10,165	9,786	10,685	105	109
Heavy	28,546	31,770	32,073	112	101
Total	2,922,804	2,958,357	3,091,124	106	104
Turkeys					
Young	451,146	434,440	442,975	98	102
Old	4,200	3,262	3,962	94	121
Total	455,346	437,702	446,937	98	102
Ducks	11,154	12,288	11,351	102	92
Other Poultry	224	231	184	82	80
<b>Total Poultry</b>	<b>3,389,528</b>	<b>3,408,578</b>	<b>3,549,596</b>	<b>105</b>	<b>104</b>

See footnote(s) at end of table.

--continued

**Poultry Slaughter: Chilled and Frozen, Pounds Certified by Type,  
United States, January 2006<sup>1</sup> (continued)**

Commodity	January to Date			Percent of	
	2004	2005	2006	2004	2005
	<i>1,000 Pounds</i>	<i>1,000 Pounds</i>	<i>1,000 Pounds</i>	<i>Percent</i>	<i>Percent</i>
<b>Chilled</b>					
Chickens					
Young	2,553,222	2,626,172	2,765,410	108	105
Mature	39,039	38,483	42,326	108	110
Light	10,384	10,163	10,683	103	105
Heavy	28,655	28,320	31,643	110	112
Total	2,592,261	2,664,655	2,807,736	108	105
Turkeys					
Young	239,252	257,398	245,238	103	95
Old	3,823	3,970	3,306	86	83
Total	243,075	261,368	248,544	102	95
Ducks	7,132	5,704	5,788	81	101
Other Poultry	129	195	164	127	84
<b>Total Poultry</b>	<b>2,842,597</b>	<b>2,931,922</b>	<b>3,062,232</b>	<b>108</b>	<b>104</b>
<b>Frozen</b>					
Chickens					
Young	270,377	257,921	282,956	105	110
Mature	170	228	432	254	189
Light		2	2		100
Heavy	170	226	430	253	190
Total	270,547	258,149	283,388	105	110
Turkeys					
Young	196,235	193,748	197,737	101	102
Old	721	230	656	91	285
Total	196,956	193,978	198,393	101	102
Ducks	4,282	5,450	5,563	130	102
Other Poultry	39	29	20	51	69
<b>Total Poultry</b>	<b>471,824</b>	<b>457,606</b>	<b>487,364</b>	<b>103</b>	<b>107</b>
<b>Total Chilled and Frozen</b>					
Chickens					
Young	2,823,599	2,884,093	3,048,366	108	106
Mature	39,209	38,711	42,758	109	110
Light	10,384	10,165	10,685	103	105
Heavy	28,825	28,546	32,073	111	112
Total	2,862,808	2,922,804	3,091,124	108	106
Turkeys					
Young	435,487	451,146	442,975	102	98
Old	4,544	4,200	3,962	87	94
Total	440,031	455,346	446,937	102	98
Ducks	11,414	11,154	11,351	99	102
Other Poultry	168	224	184	110	82
<b>Total Poultry</b>	<b>3,314,421</b>	<b>3,389,528</b>	<b>3,549,596</b>	<b>107</b>	<b>105</b>

<sup>1</sup> Ready-to-cook weights.

**Poultry Slaughter: Ante-Mortem Condemnations by Type,  
United States, January 2006 <sup>1</sup>**

Commodity	Jan 2005	Dec 2005	Jan 2006	Percent of		January to Date		Percent of 2005
				Jan 2005	Dec 2005	2005	2006	
				<i>Percent</i>	<i>Percent</i>			
	<i>1,000 Pounds</i>	<i>1,000 Pounds</i>	<i>1,000 Pounds</i>	<i>Percent</i>	<i>Percent</i>	<i>1,000 Pounds</i>	<i>1,000 Pounds</i>	<i>Percent</i>
Live Weight								
Chickens								
Young	14,315	14,842	12,962	91	87	14,315	12,962	91
Mature	817	910	769	94	85	817	769	94
Light	322	310	292	91	94	322	292	91
Heavy	495	600	477	96	80	495	477	96
Total	15,132	15,752	13,731	91	87	15,132	13,731	91
Turkeys								
Young	1,853	1,600	1,700	92	106	1,853	1,700	92
Old	88	74	43	49	58	88	43	49
Total	1,941	1,674	1,743	90	104	1,941	1,743	90
Ducks	34	33	28	82	85	34	28	82
Other Poultry	1					1		
Total Poultry	17,108	17,459	15,502	91	89	17,108	15,502	91
	<i>Percent</i>	<i>Percent</i>	<i>Percent</i>	<i>Percent</i>	<i>Percent</i>	<i>Percent</i>	<i>Percent</i>	<i>Percent</i>
Percent of Total Weight Condemned <sup>2</sup>								
Chickens								
Young	0.37	0.38	0.32	86	84	0.37	0.32	86
Mature	1.30	1.36	1.10	85	81	1.30	1.10	85
Light	1.65	1.61	1.37	83	85	1.65	1.37	83
Heavy	1.15	1.26	0.98	85	78	1.15	0.98	85
Total	0.39	0.39	0.33	85	85	0.39	0.33	85
Turkeys								
Young	0.32	0.29	0.30	94	103	0.32	0.30	94
Old	1.57	1.72	0.82	52	48	1.57	0.82	52
Total	0.34	0.30	0.31	91	103	0.34	0.31	91
Ducks	0.22	0.19	0.18	82	95	0.22	0.18	82
Other Poultry	0.28					0.28		
Total Poultry	0.38	0.38	0.33	87	87	0.38	0.33	87

<sup>1</sup> Federally inspected only.

<sup>2</sup> Pounds condemned as a percent of live weight pounds inspected.



**Poultry Slaughter: Post-Mortem Condemnations by Type,  
United States, January 2006 <sup>1</sup>**

Commodity	Jan 2005	Dec 2005	Jan 2006	Percent of		January to Date		Percent of 2005
				Jan 2005	Dec 2005	2005	2006	
				<i>1,000 Pounds</i>				
<i>N.Y. Dressed Weight</i>	<i>1,000 Pounds</i>	<i>1,000 Pounds</i>	<i>1,000 Pounds</i>	<i>Percent</i>	<i>Percent</i>	<i>1,000 Pounds</i>	<i>1,000 Pounds</i>	<i>Percent</i>
Chickens								
Young	36,104	36,094	36,796	102	102	36,104	36,796	102
Mature	2,816	3,164	3,311	118	105	2,816	3,311	118
Light	1,300	1,582	1,730	133	109	1,300	1,730	133
Heavy	1,516	1,582	1,581	104	100	1,516	1,581	104
Total	38,920	39,258	40,107	103	102	38,920	40,107	103
Turkeys								
Young	9,125	7,544	8,522	93	113	9,125	8,522	93
Old	293	236	235	80	100	293	235	80
Total	9,418	7,780	8,757	93	113	9,418	8,757	93
Ducks	403	427	401	100	94	403	401	100
Other Poultry	5	4	3	60	75	5	3	60
Total Poultry	48,746	47,469	49,268	101	104	48,746	49,268	101
	<i>Percent</i>	<i>Percent</i>	<i>Percent</i>	<i>Percent</i>	<i>Percent</i>	<i>Percent</i>	<i>Percent</i>	<i>Percent</i>
<i>Percent of Total Weight Condemned <sup>2</sup></i>								
Chickens								
Young	1.04	1.02	1.00	96	98	1.04	1.00	96
Mature	4.99	5.24	5.25	105	100	4.99	5.25	105
Light	7.41	9.11	9.02	122	99	7.41	9.02	122
Heavy	3.90	3.67	3.60	92	98	3.90	3.60	92
Total	1.10	1.09	1.07	97	98	1.10	1.07	97
Turkeys								
Young	1.78	1.53	1.69	95	110	1.78	1.69	95
Old	5.82	6.07	5.00	86	82	5.81	5.00	86
Total	1.82	1.56	1.72	95	110	1.82	1.72	95
Ducks	2.87	2.75	2.81	98	102	2.87	2.81	98
Other Poultry	1.54	0.90	1.14	74	127	1.53	1.14	75
Total Poultry	1.20	1.15	1.15	96	100	1.20	1.15	96

<sup>1</sup> Federally inspected only.

<sup>2</sup> Pounds condemned as a percent of N.Y. dressed weight of quantity inspected.

**Young Chickens Slaughtered: Number, Live Weight, and Average Live Weight,  
by State and United States, January 2006**

State	Number Slaughtered		Live Weight		Average Live Weight	
	December	January	December	January	December	January
	<i>1,000 Head</i>	<i>1,000 Head</i>	<i>1,000 Pounds</i>	<i>1,000 Pounds</i>	<i>Pounds</i>	<i>Pounds</i>
AL	86,615	88,433	464,149	477,967	5.36	5.40
AR	92,967	99,878	494,882	529,643	5.32	5.30
CA	*	*	*	*	*	*
DE	24,731	26,357	170,519	178,052	6.89	6.76
FL	*	*	*	*	*	*
GA	103,478	106,567	533,846	546,761	5.16	5.13
KY	23,005	23,068	126,556	127,485	5.50	5.53
LA	16,237	16,902	92,519	99,545	5.70	5.89
MD	12,372	11,849	59,632	57,005	4.82	4.81
MS	61,570	62,643	353,818	357,214	5.75	5.70
MO	33,926	34,109	156,614	160,524	4.62	4.71
NJ	*	*	*	*	*	*
NY	*	*	*	*	*	*
NC	57,123	58,948	388,516	404,456	6.80	6.86
OH	3,672	3,787	19,933	20,566	5.43	5.43
PA	9,741	10,196	54,952	57,796	5.64	5.67
SC	21,419	22,324	131,538	139,866	6.14	6.27
TN	22,361	23,493	112,901	122,477	5.05	5.21
TX	51,222	56,369	266,938	297,519	5.21	5.28
VA	26,556	27,077	139,521	143,266	5.25	5.29
WA	*	*	*	*	*	*
Oth Sts	70,642	72,669	364,349	373,923	5.16	5.15
US	717,637	744,669	3,931,183	4,094,065	5.48	5.50

\* Included in "Other States" to avoid disclosing individual operations.

**Young Chickens Slaughtered: Pounds Certified and Post-Mortem Condemnations  
by State and United States, January 2006**

State	Total Chilled and Frozen Pounds Certified <sup>1</sup>		Post-Mortem Condemnations			
			N.Y. Dressed Weight		Percent <sup>2</sup>	
	December	January	December	January	December	January
	<i>1,000 Pounds</i>	<i>1,000 Pounds</i>	<i>1,000 Pounds</i>	<i>1,000 Pounds</i>	<i>Percent</i>	<i>Percent</i>
AL	344,798	357,679	4,393	4,470	1.05	1.04
AR	365,125	391,826	4,716	5,099	1.06	1.07
CA	*	*	*	*	*	*
DE	122,962	128,115	2,312	2,435	1.51	1.52
FL	*	*	*	*	*	*
GA	396,894	409,764	3,290	3,273	0.68	0.67
KY	93,430	93,433	1,168	872	1.03	0.76
LA	67,667	72,965	637	777	0.77	0.87
MD	43,659	41,586	769	695	1.43	1.35
MS	269,421	274,905	3,370	3,188	1.06	0.99
MO	114,953	117,666	1,336	1,518	0.95	1.05
NJ	*	*	*	*	*	*
NY	*	*	*	*	*	*
NC	296,534	310,160	3,978	4,066	1.14	1.12
OH	14,753	15,261	193	203	1.08	1.10
PA	38,256	40,538	854	857	1.73	1.65
SC	98,518	103,990	779	751	0.66	0.60
TN	82,304	89,685	1,151	1,142	1.13	1.04
TX	204,483	228,314	2,233	2,454	0.93	0.92
VA	97,130	99,353	1,079	1,138	0.86	0.88
WA	*	*	*	*	*	*
Oth Sts	265,914	273,126	3,836	3,858	1.17	1.15
US	2,916,801	3,048,366	36,094	36,796	1.02	1.00

\* Included in "Other States" to avoid disclosing individual operations.

<sup>1</sup> Ready-to-cook weights.

<sup>2</sup> Pounds condemned as percent of equivalent N.Y. dressed weight of quantity inspected.

**Chickens Slaughtered: Number Condemned Post-Mortem by Cause, by Type,  
by State and United States, December 2005**

State	Tuber- culosis	Leukosis	Septicemia	Airsac- culitis	Synovitis	Tumors
	<i>Number of Head</i>	<i>Number of Head</i>	<i>Number of Head</i>	<i>Number of Head</i>	<i>Number of Head</i>	<i>Number of Head</i>
Young Birds						
AL		245	109,791	77,480	1,133	4,667
AR		847	170,448	71,848	1,696	4,073
CA		*	*	*	*	*
DE		*	127,456	43,647	*	7,007
FL		*	*	*	*	*
GA		431	77,703	51,185	172	5,715
IN		*	*	*	*	*
KY		*	37,904	*	33	*
LA		*	19,604	6,527	*	379
MD		642	43,389	*	*	*
MS		*	66,809	53,743	*	1,618
MO		800	94,620	17,855	294	1,544
NJ		*	*	*	*	*
NY		*	*	*	*	*
NC		380	98,976	46,298	*	*
OH			6,496	*	*	86
PA		117	32,949	20,174	441	481
SC		*	10,507	4,930	15	*
TN		357	69,484	36,376	87	993
TX		140	67,371	48,115	*	2,120
VA		*	54,695	*	*	*
WA		*	*	*	*	*
Oth Sts		11,454	229,777	228,125	3,836	32,894
US		15,413	1,317,979	706,303	7,707	61,577
Mature Birds						
Light		3,274	216,823	43,395	1,040	89,449
Heavy		749	48,400	1,461	21	5,991
US		4,023	265,223	44,856	1,061	95,440

See footnote(s) at end of table.

--continued

**Chickens Slaughtered: Number Condemned Post-Mortem by Cause, by Type,  
by State and United States, December 2005 (continued)**

	Bruises	Cadaver	Contam-ination	Overscald	Other	Total <sup>1</sup>
	<i>Number of Head</i>	<i>Number of Head</i>	<i>Number of Head</i>	<i>Number of Head</i>	<i>Number of Head</i>	<i>Number of Head</i>
Young Birds						
AL	2,793	15,393	15,297	6,976	165,089	398,864
AR	4,466	19,051	24,741	1,849	88,902	387,921
CA	*	*	*	*	*	*
DE	2,721	8,610	10,920	*	53,016	267,571
FL	*	*	*	*	*	*
GA	1,963	35,603	8,662	3,516	96,522	281,472
IN	*	*	*	*	*	*
KY	*	4,501	2,929	*	*	*
LA	320	3,139	2,665	105	2,374	35,218
MD	*	7,864	*	*	*	*
MS	2,095	8,775	6,678	*	114,087	255,729
MO	1,276	4,881	7,672	*	*	206,443
NJ	*	*	*	*	*	*
NY	*	*	*	*	*	*
NC	2,057	19,902	12,533	7,240	94,225	296,735
OH	*	*	396	*	*	15,016
PA	1,035	3,051	11,249	48	10,910	80,455
SC	347	1,580	*	2,725	33,230	57,248
TN	1,187	9,207	6,062	*	*	141,683
TX	775	4,600	7,614	*	51,023	183,868
VA	1,167	5,783	3,923	*	*	139,464
WA	*	*	*	*	*	*
Oth Sts	4,974	20,307	37,754	20,558	292,051	764,256
US	27,176	172,247	159,095	43,017	1,001,429	3,511,943
Mature Birds						
Light	8,373	6,708	121,566	933	60,346	551,907
Heavy	993	6,697	13,489	515	76,115	154,431
US	9,366	13,405	135,055	1,448	136,461	706,338

\* Included in "Other States" to avoid disclosing individual operations.

<sup>1</sup> The sum of the individual diseases does not add across to the total for "Other States".

**Chickens Slaughtered: Number Condemned Post-Mortem by Cause, by Type,  
by State and United States, January 2006**

State	Tuber- culosis	Leukosis	Septicemia	Airsac- culitis	Synovitis	Tumors
	<i>Number of Head</i>	<i>Number of Head</i>	<i>Number of Head</i>	<i>Number of Head</i>	<i>Number of Head</i>	<i>Number of Head</i>
Young Birds						
AL		225	110,945	69,143	822	5,148
AR		983	183,394	81,494	1,811	4,682
CA		*	*	*	*	*
DE		*	121,832	52,530	*	9,155
FL		*	*	*	*	*
GA		406	77,651	59,266	234	6,747
IN		*	*	*	*	*
KY		42	38,428	*	12	*
LA		*	25,624	7,356	40	368
MD		494	41,734	*	36	*
MS		143	70,501	53,854	343	1,571
MO		779	110,957	18,385	*	1,765
NJ		*	*	*	*	*
NY		*	*	*	*	*
NC		393	94,242	57,893	*	*
OH		*	7,668	*	23	118
PA		*	30,134	17,827	295	537
SC		*	10,971	5,259	28	*
TN		*	66,005	33,066	160	1,167
TX		*	72,703	42,709	126	2,139
VA		*	50,150	*	12	*
WA		*	*	*	*	*
Oth Sts		22,757	225,125	141,274	2,468	33,715
US		26,222	1,338,064	640,056	6,410	67,112
Mature Birds						
Light		3,236	243,901	34,239	261	89,520
Heavy		957	50,337	1,494	40	6,296
US		4,193	294,238	35,733	301	95,816

See footnote(s) at end of table.

--continued

**Chickens Slaughtered: Number Condemned Post-Mortem by Cause, by Type,  
by State and United States, January 2006 (continued)**

	Bruises	Cadaver	Contam-ination	Overscald	Other	Total <sup>1</sup>
	<i>Number of Head</i>	<i>Number of Head</i>	<i>Number of Head</i>	<i>Number of Head</i>	<i>Number of Head</i>	<i>Number of Head</i>
Young Birds						
AL	2,782	13,810	17,222	5,842	160,677	386,616
AR	4,261	17,707	26,444	2,437	109,585	432,798
CA	*	*	*	*	*	*
DE	2,721	8,361	9,473	3,726	56,303	284,766
FL	*	*	*	*	*	*
GA	2,141	29,522	10,365	3,257	86,044	275,633
IN	*	*	*	*	*	*
KY	*	3,629	3,599	*	2,875	77,308
LA	306	3,576	*	105	3,435	44,099
MD	*	7,143	*	526	*	*
MS	2,084	8,140	5,245	1,062	102,382	245,325
MO	1,389	4,595	8,537	633	*	240,413
NJ	*	*	*	*	*	*
NY	*	*	*	*	*	*
NC	1,997	18,984	11,510	5,299	107,596	311,885
OH	56	*	*	*	*	16,656
PA	1,074	3,195	9,349	*	9,333	72,575
SC	479	1,680	*	*	40,394	65,072
TN	1,156	8,180	5,145	*	*	134,273
TX	713	4,143	10,117	*	44,434	178,974
VA	1,196	5,176	4,945	*	*	143,615
WA	*	*	*	*	*	*
Oth Sts	5,217	17,159	42,859	14,587	308,393	584,163
US	27,572	155,000	164,810	37,474	1,031,451	3,494,171
Mature Birds						
Light	12,930	7,966	132,744	1,431	67,435	593,663
Heavy	1,331	14,597	16,589	673	79,884	172,198
US	14,261	22,563	149,333	2,104	147,319	765,861

\* Included in "Other States" to avoid disclosing individual operations.

<sup>1</sup> The sum of the individual diseases does not add across to the total for "Other States".

**Young Turkeys (Mature) Slaughtered: Number, Live Weight, and Average Live Weight, by State and United States, January 2006**

State	Number Slaughtered		Live Weight		Average Live Weight	
	December	January	December	January	December	January
	<i>1,000 Head</i>	<i>1,000 Head</i>	<i>1,000 Pounds</i>	<i>1,000 Pounds</i>	<i>Pounds</i>	<i>Pounds</i>
AR	2,451	2,416	48,613	48,478	19.84	20.06
MN	2,667	2,511	75,615	70,810	28.35	28.21
MO	1,367	1,525	44,830	51,500	32.79	33.77
Oth Sts	12,710	12,069	379,503	389,947	29.86	32.31
US	19,195	18,521	548,561	560,735	28.58	30.28

**Young Turkeys (Mature) Slaughtered: Pounds Certified and Post-Mortem Condemnations, by State and United States, January 2006**

State	Total Chilled and Frozen Pounds Certified <sup>1</sup>		Post-Mortem Condemnations			
			N.Y. Dressed Weight		Percent <sup>2</sup>	
	December	January	December	January	December	January
	<i>1,000 Pounds</i>	<i>1,000 Pounds</i>	<i>1,000 Pounds</i>	<i>1,000 Pounds</i>	<i>Percent</i>	<i>Percent</i>
AR	39,646	39,820	695	728	1.59	1.67
MN	60,372	56,443	1,287	1,268	1.89	1.99
MO	35,300	40,397	628	825	1.56	1.78
Oth Sts	299,122	306,315	4,934	5,701	1.44	1.62
US	434,440	442,975	7,544	8,522	1.53	1.69

<sup>1</sup> Ready-to-cook weights.

<sup>2</sup> Pounds condemned as percent of equivalent N.Y. dressed weight of quantity inspected.



**Turkeys Slaughtered: Number Condemned Post-Mortem by Cause, by Type,  
United States, December 2005**

State	Tuber- culosis	Leukosis	Septicemia	Airsac- culitis	Synovitis	Tumors
	<i>Number of Head</i>	<i>Number of Head</i>	<i>Number of Head</i>	<i>Number of Head</i>	<i>Number of Head</i>	<i>Number of Head</i>
Young (Mature) US		150	72,105	7,646	4,061	197
Old (Breeders) US			2,145	289	1	104
	Bruises	Cadaver	Contam- ination	Overscald	Other	Total
	<i>Number of Head</i>	<i>Number of Head</i>	<i>Number of Head</i>	<i>Number of Head</i>	<i>Number of Head</i>	<i>Number of Head</i>
Young (Mature) US	440	4,134	4,538	953	19,790	114,014
Old (Breeders) US	11	61	87	9	2,165	4,872

**Turkeys Slaughtered: Number Condemned Post-Mortem by Cause, by Type,  
United States, January 2006**

State	Tuber- culosis	Leukosis	Septicemia	Airsac- culitis	Synovitis	Tumors
	<i>Number of Head</i>	<i>Number of Head</i>	<i>Number of Head</i>	<i>Number of Head</i>	<i>Number of Head</i>	<i>Number of Head</i>
Young (Mature) US		24	66,798	8,929	3,532	123
Old (Breeders) US		1	2,325	519	4	125
	Bruises	Cadaver	Contam- ination	Overscald	Other	Total
	<i>Number of Head</i>	<i>Number of Head</i>	<i>Number of Head</i>	<i>Number of Head</i>	<i>Number of Head</i>	<i>Number of Head</i>
Young (Mature) US	516	3,621	3,545	1,585	17,488	106,161
Old (Breeders) US	18	77	101	265	914	4,349

## Poultry Slaughter Estimates

**Data Sources:** Data for poultry slaughter estimates are collected by inspectors of the Food Safety and Inspection Service (FSIS), USDA for all Federally Inspected (FI) plants. Over 99 percent of the total U.S. slaughter for any species is under FI. The number of head slaughtered daily, by species and class, as well as condemnations and total live and dressed weights are obtained by shift for each plant. Approximately 320 plants slaughtered poultry in the U.S. under Federal Inspection in 2005. Young chickens were killed in 35 states, young turkeys in 24 states.

**Revision Policy:** Revisions are generally the result of late reports received by FSIS from plants and are usually less than one-half of 1 percent of the preliminary totals. Revisions for the previous month and year-to-date totals are published in each monthly release. Final data are published in the annual summary released in February and reflect any late reports or corrections which occurred after the monthly revisions were published.

**Procedures and Reliability:** Plant inspectors submit data electronically for each shift a plant operates. An edit provides checks for the detection of errors such as invalid plant information, duplication, and erroneous data. Data are accumulated to monthly totals for this release.

Data for major slaughter plants with missing reports are adjusted prior to publication to assure that all plants slaughtering a significant portion of a specific class are accounted for. Estimates for missing shifts are made only after verifying that the plant was in operation. Adjustments are based on a shift determined to be similar to the one missing. Late reports replace imputed data as they become available. While there is a varying degree of incompleteness from month to month, it has only a minimal impact on the published totals.

Poultry slaughter estimates are based on a census of operating plants and, therefore, have no sampling error. However, they may be subject to errors such as omissions, duplications, and mistakes in reporting, recording, and processing the data. These errors are minimized through strict quality controls in the edit and summarization process, and a careful review of all reported data for consistency and reasonableness.

State data are published for selected states for young chickens and young turkeys. State data are not published if less than three plants operate for a species in a State, or if one plant has 60 percent or more of the total live weight for that species. Data for all states not published are included in the "Other States" category. Also included in this category are data for published states that are confidential (denoted by an \*). Data for all states are included in the U.S. totals.

## Definitions

**Ante-Mortem Condemnations** - Birds condemned prior to their entry into the slaughter plant.

**Certified Ready-to-Cook** - The weight of poultry certified wholesome by inspection after post-mortem condemnation pounds are removed. Ready-to-cook represents poultry meat ready for the marketing channel.

**Ducks** - Includes all ducks regardless of age and weight.

**Fryer-Roaster Turkeys** - Young immature birds, usually under 16 weeks of age. Included with young turkeys.

**Mature Chickens** - Fowl from breeder and market egg flocks and stags and cocks.

**New York Dressed Weight** - Carcass weight after only feathers and blood are removed. This weight is approximately 90% of live weight.

**Old Turkeys (Breeders)** - Fully matured birds held for egg production, usually over 15 months of age.

**Other Poultry** - Includes all other ready-to-cook products which bear the USDA Inspected for Wholesomeness legend.

**Post-Mortem Condemnations** - Carcasses or parts condemned by the inspector because of disease or mishandling and removed from the slaughter line and destroyed.

**Young Chickens** - Commercially grown broilers-fryers and other young immature birds such as roasters and capons.

**Young Turkeys (Mature)** - Young birds grown to a matured market age, about 5 months.

## ACCESS TO REPORTS!!

---

For your convenience, there are several ways to obtain NASS reports, data products, and services:

### INTERNET ACCESS

All NASS reports are available free of charge on the worldwide Internet. For access, connect to the Internet and go to the NASS Home Page at: [www.nass.usda.gov](http://www.nass.usda.gov).

### E-MAIL SUBSCRIPTION

All NASS reports are available by subscription free of charge direct to your e-mail address. Starting with the NASS Home Page at [www.nass.usda.gov](http://www.nass.usda.gov), under the right navigation, *Receive reports by Email*, click on **National** or **State**. Follow the instructions on the screen.

-----

### PRINTED REPORTS OR DATA PRODUCTS

**CALL OUR TOLL-FREE ORDER DESK: 800-999-6779 (U.S. and Canada)**  
**Other areas, please call 703-605-6220      FAX: 703-605-6900**  
**(Visa, MasterCard, check, or money order acceptable for payment.)**

-----

### ASSISTANCE

For **assistance** with general agricultural statistics or further information about NASS or its products or services, contact the **Agricultural Statistics Hotline** at **800-727-9540**, 7:30 a.m. to 4:00 p.m. ET, or e-mail: [nass@nass.usda.gov](mailto:nass@nass.usda.gov).

The U.S. Department of Agriculture (USDA) prohibits discrimination in all its programs and activities on the basis of race, color, national origin, age, disability, and where applicable, sex, marital status, familial status, parental status, religion, sexual orientation, genetic information, political beliefs, reprisal, or because all or part of an individual's income is derived from any public assistance program. (Not all prohibited bases apply to all programs.) Persons with disabilities who require alternative means for communication of program information (Braille, large print, audiotape, etc.) should contact USDA's TARGET Center at (202) 720-2600 (voice and TDD).

To file a complaint of discrimination, write to USDA, Director, Office of Civil Rights, 1400 Independence Avenue, S.W., Washington, D.C. 20250-9410, or call (800) 795-3272 (voice) or (202) 720-6382 (TDD). USDA is an equal opportunity provider and employer.