



NASS

FACT FINDERS FOR AGRICULTURE
UNITED STATES DEPARTMENT OF AGRICULTURE

Washington, D.C.

Poultry Slaughter

Released March 31, 2006, by the National Agricultural Statistics Service (NASS), Agricultural Statistics Board, U.S. Department of Agriculture. For information on *Poultry Slaughter* call John Lange at 202-720-0585, office hours 7:00 a.m. to 4:30 p.m. ET.

Ready-to-Cook Weight Up 3 Percent

Poultry certified wholesome during February 2006 (ready-to-cook weight) totaled 3.21 billion pounds, up 3 percent from the amount certified in February 2005. Updated totals for January 2005 show that 3.55 billion pounds were certified.

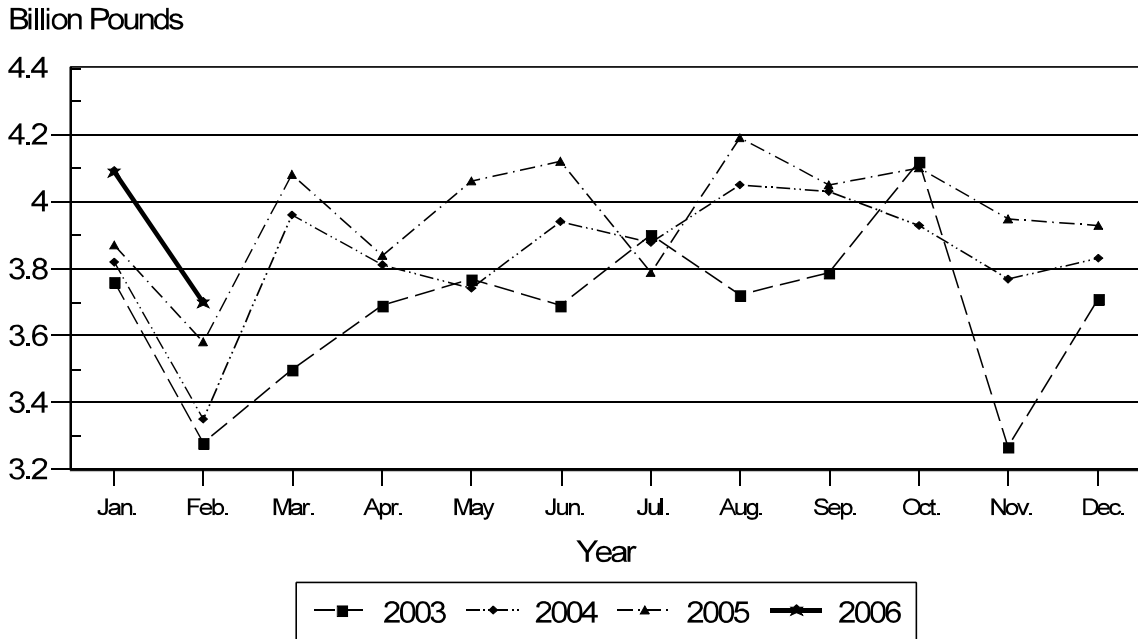
The preliminary total live weight of poultry inspected during February 2006 was 4.30 billion pounds, up 3 percent from 4.18 billion pounds a year ago. Young chickens inspected totaled 3.70 billion pounds, up 3 percent from February 2005, but mature chickens, at 58.7 million pounds, were down 6 percent from the previous year. Turkey inspections totaled 526 million pounds, up 2 percent from a year ago. Ducks totaled 14.5 million pounds, up 7 percent from last year.

Young chickens slaughtered during February 2006 averaged 5.45 pounds per bird, up 2 percent from February 2005. The average live weight of mature chickens was 5.87 pounds per bird, up 4 percent from a year ago. Turkeys slaughtered during February 2006 averaged 29.7 pounds per bird, 2 percent above February 2005.

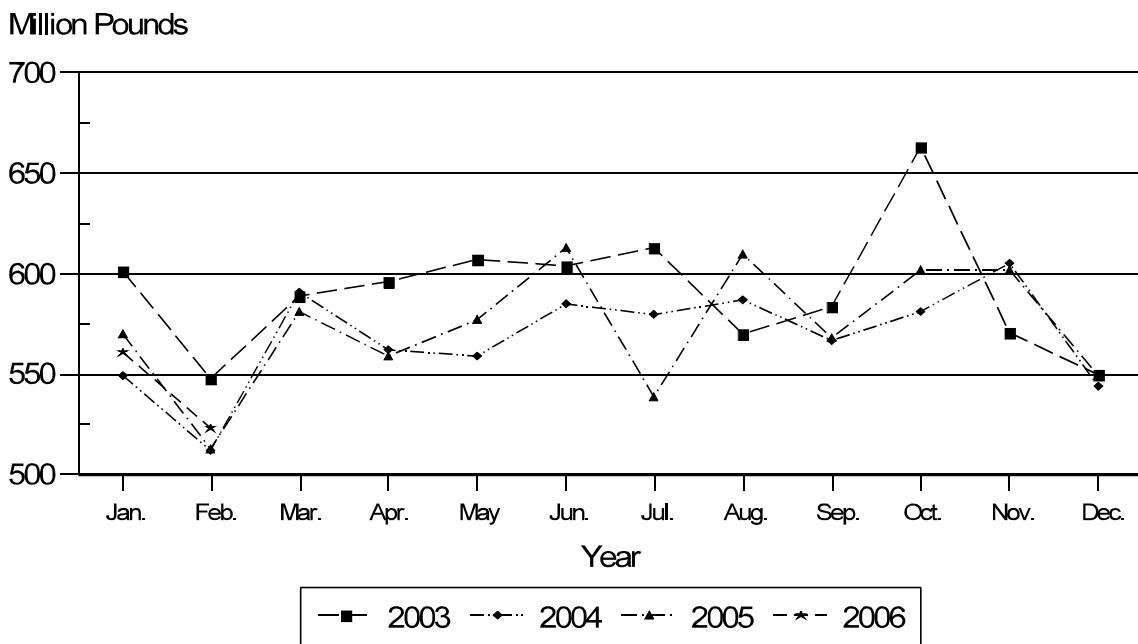
Ante-mortem condemnations during February 2006 totaled 14.7 million pounds. Condemnations were 0.34 percent of the live weight inspected, compared to 0.35 percent a year earlier. Post-mortem condemnations, at 46.5 million pounds (N.Y. dressed weight), were 1.20 percent of quantities inspected, compared with 1.23 percent a year earlier.

February 2006 contained 20 weekdays (including one holiday) and four Saturdays, the same as February 2005.

Young Chickens: Live Weight Slaughtered, by Month, 2003-2006



Young Turkeys: Live Weight Slaughtered, by Month, 2003-2006



Contents

	Page
Poultry Slaughter	1
Young Chickens Slaughtered	7
Young Turkeys (Mature) Slaughtered	13
Reliability Statement	15
Definitions	16

**Poultry Slaughter: Number, Live Weight, and Average Live Weight by Type,
United States, February 2005¹**

Commodity	Feb 2005	Jan 2006	Feb 2006	Percent of	
				Feb 2005	Jan 2006
	<i>1,000 Head</i>	<i>1,000 Head</i>	<i>1,000 Head</i>	<i>Percent</i>	<i>Percent</i>
Number Slaughtered					
Chickens					
Young	672,182	744,754	678,198	101	91
Mature	11,058	12,568	10,000	90	80
Light	5,577	6,437	4,483	80	70
Heavy	5,481	6,131	5,517	101	90
Total	683,240	757,322	688,198	101	91
Turkeys					
Young	17,566	18,521	17,579	100	95
Old	164	191	132	80	69
Total	17,730	18,712	17,711	100	95
Ducks	2,015	2,347	2,148	107	92
	<i>1,000 pounds</i>	<i>1,000 pounds</i>	<i>1,000 pounds</i>	<i>Percent</i>	<i>Percent</i>
Live Weight					
Chickens					
Young	3,580,820	4,094,586	3,695,687	103	90
Mature	62,722	70,120	58,650	94	84
Light	18,394	21,299	15,176	83	71
Heavy	44,328	48,821	43,474	98	89
Total	3,643,542	4,164,706	3,754,337	103	90
Turkeys					
Young	513,161	560,735	522,538	102	93
Old	4,472	5,226	3,427	77	66
Total	517,633	565,961	525,965	102	93
Ducks	13,611	15,882	14,529	107	91
Other Poultry	293	292	256	87	88
Total Poultry	4,175,079	4,746,841	4,295,087	103	90
	<i>Pounds</i>	<i>Pounds</i>	<i>Pounds</i>	<i>Percent</i>	<i>Percent</i>
Average Live Weight					
Chickens					
Young	5.33	5.50	5.45	102	99
Mature	5.67	5.58	5.87	104	105
Light	3.30	3.31	3.39	103	102
Heavy	8.09	7.96	7.88	97	99
Total	5.33	5.50	5.46	102	99
Turkeys					
Young	29.21	30.28	29.73	102	98
Old	27.27	27.36	25.96	95	95
Total	29.20	30.25	29.70	102	98
Ducks	6.75	6.77	6.76	100	100

See footnote(s) at end of table.

--continued

**Poultry Slaughter: Number, Live Weight, and Average Live Weight by Type,
United States, February 2006 ¹ (continued)**

Commodity	January to Date			Percent of	
	2004	2005	2006	2004	2005
	<i>1,000 Head</i>	<i>1,000 Head</i>	<i>1,000 Head</i>	<i>Percent</i>	<i>Percent</i>
Number Slaughtered					
Chickens					
Young	1,367,334	1,392,041	1,422,952	104	102
Mature	21,080	22,222	22,568	107	102
Light	11,087	11,425	10,920	98	96
Heavy	9,993	10,797	11,648	117	108
Total	1,388,414	1,414,263	1,445,520	104	102
Turkeys					
Young	38,281	36,785	36,100	94	98
Old	314	361	323	103	89
Total	38,595	37,146	36,423	94	98
Ducks	4,093	4,318	4,495	110	104
	<i>1,000 pounds</i>	<i>1,000 pounds</i>	<i>1,000 pounds</i>	<i>Percent</i>	<i>Percent</i>
Live Weight					
Chickens					
Young	7,170,896	7,447,369	7,790,273	109	105
Mature	117,225	125,387	128,770	110	103
Light	37,321	37,875	36,475	98	96
Heavy	79,904	87,512	92,295	116	105
Total	7,288,121	7,572,756	7,919,043	109	105
Turkeys					
Young	1,060,955	1,083,579	1,083,273	102	100
Old	8,825	10,071	8,653	98	86
Total	1,069,780	1,093,650	1,091,926	102	100
Ducks	27,658	29,196	30,411	110	104
Other Poultry	464	656	548	118	84
Total Poultry	8,386,023	8,696,258	9,041,928	108	104
	<i>Pounds</i>	<i>Pounds</i>	<i>Pounds</i>	<i>Percent</i>	<i>Percent</i>
Average Live Weight					
Chickens					
Young	5.24	5.35	5.47	104	102
Mature	5.56	5.64	5.71	103	101
Light	3.37	3.32	3.34	99	101
Heavy	8.00	8.11	7.92	99	98
Total	5.25	5.35	5.48	104	102
Turkeys					
Young	27.71	29.46	30.01	108	102
Old	28.05	27.90	26.79	96	96
Total	27.72	29.44	29.98	108	102
Ducks	6.76	6.76	6.77	100	100

¹ Federally inspected only.

**Poultry Slaughter: Chilled and Frozen, Pounds Certified by Type,
United States, February 2006 ¹**

Commodity	Feb 2005	Jan 2006	Feb 2006	Percent of	
				Feb 2005	Jan 2006
	<i>1,000 Pounds</i>	<i>1,000 Pounds</i>	<i>1,000 Pounds</i>	<i>Percent</i>	<i>Percent</i>
Chilled					
Chickens					
Young	2,423,886	2,765,789	2,485,933	103	90
Mature	38,451	42,326	36,763	96	87
Light	9,501	10,683	7,918	83	74
Heavy	28,950	31,643	28,845	100	91
Total	2,462,337	2,808,115	2,522,696	102	90
Turkeys					
Young	234,931	245,238	232,672	99	95
Old	2,984	3,306	2,180	73	66
Total	237,915	248,544	234,852	99	94
Ducks	5,120	5,788	5,246	102	91
Other Poultry	159	164	137	86	84
Total Poultry	2,705,531	3,062,611	2,762,931	102	90
Frozen					
Chickens					
Young	244,037	282,956	256,715	105	91
Mature	387	432	208	54	48
Light	3	2			
Heavy	384	430	208	54	48
Total	244,424	283,388	256,923	105	91
Turkeys					
Young	170,857	197,737	179,720	105	91
Old	387	656	401	104	61
Total	171,244	198,393	180,121	105	91
Ducks	4,619	5,563	5,157	112	93
Other Poultry	22	20	23	105	115
Total Poultry	420,309	487,364	442,224	105	91
Total Chilled and Frozen					
Chickens					
Young	2,667,923	3,048,745	2,742,648	103	90
Mature	38,838	42,758	36,971	95	86
Light	9,504	10,685	7,918	83	74
Heavy	29,334	32,073	29,053	99	91
Total	2,706,761	3,091,503	2,779,619	103	90
Turkeys					
Young	405,788	442,975	412,392	102	93
Old	3,371	3,962	2,581	77	65
Total	409,159	446,937	414,973	101	93
Ducks	9,739	11,351	10,403	107	92
Other Poultry	181	184	160	88	87
Total Poultry	3,125,840	3,549,975	3,205,155	103	90

See footnote(s) at end of table.

--continued

**Poultry Slaughter: Chilled and Frozen, Pounds Certified by Type,
United States, February 2006 ¹ (continued)**

Commodity	January to Date			Percent of	
	2004	2005	2006	2004	2005
	<i>1,000 Pounds</i>	<i>1,000 Pounds</i>	<i>1,000 Pounds</i>	<i>Percent</i>	<i>Percent</i>
Chilled					
Chickens					
Young	4,812,264	5,050,058	5,251,722	109	104
Mature	70,996	76,934	79,089	111	103
Light	19,178	19,664	18,601	97	95
Heavy	51,818	57,270	60,488	117	106
Total	4,883,260	5,126,992	5,330,811	109	104
Turkeys					
Young	452,680	492,329	477,910	106	97
Old	5,856	6,954	5,486	94	79
Total	458,536	499,283	483,396	105	97
Ducks	13,372	10,824	11,034	83	102
Other Poultry	251	354	301	120	85
Total Poultry	5,355,419	5,637,453	5,825,542	109	103
Frozen					
Chickens					
Young	479,086	501,958	539,671	113	108
Mature	557	615	640	115	104
Light		5	2		40
Heavy	557	610	638	115	105
Total	479,643	502,573	540,311	113	108
Turkeys					
Young	378,583	364,605	377,457	100	104
Old	875	617	1,057	121	171
Total	379,458	365,222	378,514	100	104
Ducks	8,224	10,069	10,720	130	106
Other Poultry	73	51	43	59	84
Total Poultry	867,398	877,915	929,588	107	106
Total Chilled and Frozen					
Chickens					
Young	5,291,350	5,552,016	5,791,393	109	104
Mature	71,553	77,549	79,729	111	103
Light	19,178	19,669	18,603	97	95
Heavy	52,375	57,880	61,126	117	106
Total	5,362,903	5,629,565	5,871,122	109	104
Turkeys					
Young	831,263	856,934	855,367	103	100
Old	6,731	7,571	6,543	97	86
Total	837,994	864,505	861,910	103	100
Ducks	21,596	20,893	21,754	101	104
Other Poultry	324	405	344	106	85
Total Poultry	6,222,817	6,515,368	6,755,130	109	104

¹ Ready-to-cook weights.

**Poultry Slaughter: Ante-Mortem Condemnations by Type,
United States, February 2006 ¹**

Commodity	Feb 2005	Jan 2006	Feb 2006	Percent of		January to Date		Percent of 2005
				Feb 2005	Jan 2006	2005	2006	
				<i>1,000 Pounds</i>	<i>1,000 Pounds</i>	<i>1,000 Pounds</i>	<i>Percent</i>	
Live Weight								
Chickens								
Young	12,231	12,963	12,352	101	95	26,546	25,315	95
Mature	785	769	635	81	83	1,602	1,404	88
Light	239	292	170	71	58	561	462	82
Heavy	546	477	465	85	97	1,041	942	90
Total	13,016	13,732	12,987	100	95	28,148	26,719	95
Turkeys								
Young	1,559	1,700	1,655	106	97	3,412	3,355	98
Old	44	43	28	64	65	132	71	54
Total	1,603	1,743	1,683	105	97	3,544	3,426	97
Ducks	26	28	28	108	100	60	56	93
Other Poultry						1		
Total Poultry	14,645	15,503	14,698	100	95	31,753	30,201	95
	<i>Percent</i>	<i>Percent</i>	<i>Percent</i>	<i>Percent</i>	<i>Percent</i>	<i>Percent</i>	<i>Percent</i>	<i>Percent</i>
Percent of Total Weight Condemned ²								
Chickens								
Young	0.34	0.32	0.33	97	103	0.36	0.32	89
Mature	1.25	1.10	1.08	86	98	1.28	1.09	85
Light	1.29	1.37	1.12	87	82	1.48	1.27	86
Heavy	1.23	0.98	1.07	87	109	1.19	1.02	86
Total	0.36	0.33	0.35	97	106	0.37	0.34	92
Turkeys								
Young	0.30	0.30	0.32	107	107	0.31	0.31	100
Old	0.98	0.82	0.82	84	100	1.31	0.82	63
Total	0.31	0.31	0.32	103	103	0.32	0.31	97
Ducks	0.19	0.18	0.19	100	106	0.21	0.18	86
Other Poultry						0.15		
Total Poultry	0.35	0.33	0.34	97	103	0.37	0.33	89

¹ Federally inspected only.

² Pounds condemned as a percent of live weight pounds inspected.

**Poultry Slaughter: Post-Mortem Condemnations by Type,
United States, February 2006 ¹**

Commodity	Feb 2005	Jan 2006	Feb 2006	Percent of		January to Date		Percent of 2005
				Feb 2005	Jan 2006	2005	2006	
				<i>1,000 Pounds</i>	<i>1,000 Pounds</i>	<i>1,000 Pounds</i>	<i>Percent</i>	
N.Y. Dressed Weight								
Chickens								
Young	34,234	36,807	35,396	103	96	70,338	72,203	103
Mature	2,959	3,311	2,497	84	75	5,775	5,808	101
Light	1,321	1,730	1,175	89	68	2,621	2,905	111
Heavy	1,638	1,581	1,322	81	84	3,154	2,903	92
Total	37,193	40,118	37,893	102	94	76,113	78,011	102
Turkeys								
Young	8,256	8,522	8,040	97	94	17,381	16,562	95
Old	305	235	186	61	79	598	421	70
Total	8,561	8,757	8,226	96	94	17,979	16,983	94
Ducks	318	401	399	125	100	721	800	111
Other Poultry	4	3	3	75	100	9	6	67
Total Poultry	46,076	49,279	46,521	101	94	94,822	95,800	101
	<i>Percent</i>	<i>Percent</i>	<i>Percent</i>	<i>Percent</i>	<i>Percent</i>	<i>Percent</i>	<i>Percent</i>	<i>Percent</i>
Percent of Total Weight Condemned ²								
Chickens								
Young	1.06	1.00	1.06	100	106	1.05	1.03	98
Mature	5.24	5.25	4.73	90	90	5.12	5.01	98
Light	7.97	9.02	8.60	108	95	7.69	8.85	115
Heavy	4.10	3.60	3.38	82	94	4.00	3.49	87
Total	1.13	1.07	1.12	99	105	1.12	1.09	97
Turkeys								
Young	1.79	1.69	1.71	96	101	1.78	1.70	96
Old	7.63	5.00	6.03	79	121	6.60	5.41	82
Total	1.84	1.72	1.74	95	101	1.83	1.73	95
Ducks	2.60	2.81	3.06	118	109	2.74	2.92	107
Other Poultry	1.52	1.14	0.87	57	76	1.52	1.22	80
Total Poultry	1.23	1.15	1.20	98	104	1.21	1.18	98

¹ Federally inspected only.

² Pounds condemned as a percent of N.Y. dressed weight of quantity inspected.

**Young Chickens Slaughtered: Number, Live Weight, and Average Live Weight,
by State and United States, February 2006**

State	Number Slaughtered		Live Weight		Average Live Weight	
	January	February	January	February	January	February
	<i>1,000 Head</i>	<i>1,000 Head</i>	<i>1,000 Pounds</i>	<i>1,000 Pounds</i>	<i>Pounds</i>	<i>Pounds</i>
AL	88,433	82,897	477,967	449,273	5.40	5.42
AR	99,878	90,194	529,643	465,447	5.30	5.16
CA	*	*	*	*	*	*
DE	26,357	23,118	178,052	153,733	6.76	6.65
FL	*	*	*	*	*	*
GA	106,567	96,449	546,761	492,881	5.13	5.11
KY	23,068	20,629	127,485	113,448	5.53	5.50
LA	16,902	14,981	99,545	85,312	5.89	5.69
MD	11,849	11,147	57,005	53,350	4.81	4.79
MS	62,643	58,412	357,214	338,231	5.70	5.79
MO	34,109	31,666	160,524	147,630	4.71	4.66
NJ	*	*	*	*	*	*
NY	*	*	*	*	*	*
NC	59,033	54,432	404,977	368,594	6.86	6.77
OH	3,787	3,479	20,566	18,523	5.43	5.32
PA	10,196	9,211	57,796	50,957	5.67	5.53
SC	22,324	20,946	139,866	131,180	6.27	6.26
TN	23,493	21,492	122,477	108,183	5.21	5.03
TX	56,369	50,878	297,519	266,032	5.28	5.23
VA	27,077	24,820	143,266	129,471	5.29	5.22
WA	*	*	*	*	*	*
Oth Sts	72,669	63,447	373,923	323,442	5.15	5.10
US	744,754	678,198	4,094,586	3,695,687	5.50	5.45

* Included in "Other States" to avoid disclosing individual operations.

**Young Chickens Slaughtered: Pounds Certified and Post-Mortem Condemnations
by State and United States, February 2006**

State	Total Chilled and Frozen Pounds Certified ¹		Post-Mortem Condemnations			
	January	February	N.Y. Dressed Weight		Percent ²	
			January	February	January	February
	<i>1,000 Pounds</i>	<i>1,000 Pounds</i>	<i>1,000 Pounds</i>	<i>1,000 Pounds</i>	<i>Percent</i>	<i>Percent</i>
AL	357,679	337,264	4,470	4,486	1.04	1.11
AR	391,826	342,333	5,099	5,170	1.07	1.23
CA	*	*	*	*	*	*
DE	128,115	110,605	2,435	2,454	1.52	1.77
FL	*	*	*	*	*	*
GA	409,764	368,345	3,273	3,193	0.67	0.72
KY	93,433	83,010	872	736	0.76	0.72
LA	72,965	62,455	777	717	0.87	0.93
MD	41,586	38,726	695	875	1.35	1.82
MS	274,905	254,071	3,188	3,131	0.99	1.03
MO	117,666	108,554	1,518	1,328	1.05	1.00
NJ	*	*	*	*	*	*
NY	*	*	*	*	*	*
NC	310,539	282,131	4,077	3,939	1.12	1.19
OH	15,261	13,703	203	172	1.10	1.03
PA	40,538	35,483	857	739	1.65	1.61
SC	103,990	97,323	751	638	0.60	0.54
TN	89,685	79,077	1,142	1,083	1.04	1.11
TX	228,314	203,562	2,454	2,282	0.92	0.95
VA	99,353	90,335	1,138	1,051	0.88	0.90
WA	*	*	*	*	*	*
Oth Sts	273,126	235,671	3,858	3,402	1.15	1.17
US	3,048,745	2,742,648	36,807	35,396	1.00	1.06

* Included in "Other States" to avoid disclosing individual operations.

¹ Ready-to-cook weights.

² Pounds condemned as percent of equivalent N.Y. dressed weight of quantity inspected.

**Chickens Slaughtered: Number Condemned Post-Mortem by Cause, by Type,
by State and United States, January 2006**

State	Tuber- culosis	Leukosis	Septicemia	Airsac- culitis	Synovitis	Tumors
	<i>Number of Head</i>	<i>Number of Head</i>	<i>Number of Head</i>	<i>Number of Head</i>	<i>Number of Head</i>	<i>Number of Head</i>
Young Birds						
AL		225	110,945	69,143	822	5,148
AR		983	183,394	81,494	1,811	4,682
CA		*	*	*	*	*
DE		*	121,832	52,530	*	9,155
FL		*	*	*	*	*
GA		406	77,651	59,266	234	6,747
IN		*	*	*	*	*
KY		42	38,428	*	12	*
LA		*	25,624	7,356	40	368
MD		494	41,734	*	36	*
MS		143	70,501	53,854	343	1,571
MO		779	110,957	18,385	*	1,765
NJ		*	*	*	*	*
NY		*	*	*	*	*
NC		393	94,396	58,569	*	*
OH		*	7,668	*	23	118
PA		*	30,134	17,827	295	537
SC		*	10,971	5,259	28	*
TN		*	66,005	33,066	160	1,167
TX		*	72,703	42,709	126	2,139
VA		*	50,150	*	12	*
WA		*	*	*	*	*
Oth Sts		22,757	225,125	141,274	2,468	33,719
US		26,222	1,338,218	640,732	6,410	67,116
Mature Birds						
Light		3,236	243,901	34,239	261	89,520
Heavy		957	50,337	1,494	40	6,296
US		4,193	294,238	35,733	301	95,816

See footnote(s) at end of table.

--continued

**Chickens Slaughtered: Number Condemned Post-Mortem by Cause, by Type,
by State and United States, January 2006 (continued)**

	Bruises	Cadaver	Contam-ination	Overscald	Other	Total ¹
	<i>Number of Head</i>	<i>Number of Head</i>	<i>Number of Head</i>	<i>Number of Head</i>	<i>Number of Head</i>	<i>Number of Head</i>
Young Birds						
AL	2,782	13,810	17,222	5,842	160,677	386,616
AR	4,261	17,707	26,444	2,437	109,585	432,798
CA	*	*	*	*	*	*
DE	2,721	8,361	9,473	3,726	56,303	284,766
FL	*	*	*	*	*	*
GA	2,141	29,522	10,365	3,257	86,044	275,633
IN	*	*	*	*	*	*
KY	*	3,629	3,599	*	2,875	77,308
LA	306	3,576	*	105	3,435	44,099
MD	*	7,143	*	526	*	*
MS	2,084	8,140	5,245	1,062	102,382	245,325
MO	1,389	4,595	8,537	633	*	240,413
NJ	*	*	*	*	*	*
NY	*	*	*	*	*	*
NC	1,998	19,002	11,524	5,299	107,614	312,770
OH	56	*	*	*	*	16,656
PA	1,074	3,195	9,349	*	9,333	72,575
SC	479	1,680	*	*	40,394	65,072
TN	1,156	8,180	5,145	*	*	134,273
TX	713	4,143	10,117	*	44,434	178,974
VA	1,196	5,176	4,945	*	*	143,615
WA	*	*	*	*	*	*
Oth Sts	5,217	17,159	42,859	14,587	308,393	584,163
US	27,573	155,018	164,824	37,474	1,031,469	3,495,056
Mature Birds						
Light	12,930	7,966	132,744	1,431	67,435	593,663
Heavy	1,331	14,597	16,589	673	79,884	172,198
US	14,261	22,563	149,333	2,104	147,319	765,861

* Included in "Other States" to avoid disclosing individual operations.

¹ The sum of the individual diseases does not add across to the total for "Other States".

**Chickens Slaughtered: Number Condemned Post-Mortem by Cause, by Type,
by State and United States, February 2006**

State	Tuber- culosis	Leukosis	Septicemia	Airsac- culitis	Synovitis	Tumors
	<i>Number of Head</i>	<i>Number of Head</i>	<i>Number of Head</i>	<i>Number of Head</i>	<i>Number of Head</i>	<i>Number of Head</i>
Young Birds						
AL		170	106,794	90,255	753	4,657
AR		1,003	185,825	106,048	1,739	4,008
CA		*	*	*	*	*
DE		*	121,295	53,302	*	8,234
FL		*	*	*	*	*
GA		466	73,114	63,384	363	7,159
IN		*	*	*	*	*
KY		*	31,006	15,010	*	*
LA		*	20,886	7,949	72	422
MD		1,045	*	*	25	*
MS		*	67,508	60,386	237	1,129
MO		1,185	95,474	18,863	254	1,290
NJ		*	*	*	*	*
NY		*	*	*	*	*
NC		506	83,040	65,138	*	*
OH		*	6,791	*	*	94
PA		*	23,797	15,949	219	323
SC		*	8,525	*	*	*
TN		432	67,221	40,739	*	1,071
TX		123	72,500	52,122	*	2,045
VA		*	48,019	*	13	*
WA		*	*	*	*	*
Oth Sts		29,041	247,940	127,449	1,930	36,390
US		33,971	1,259,735	716,594	5,605	66,822
Mature Birds						
Light		3,050	147,571	16,725	213	48,227
Heavy		1,022	47,831	1,330	52	6,529
US		4,072	195,402	18,055	265	54,756

See footnote(s) at end of table.

--continued

**Chickens Slaughtered: Number Condemned Post-Mortem by Cause, by Type,
by State and United States, February 2006 (continued)**

	Bruises	Cadaver	Contam-ination	Overscald	Other	Total ¹
	<i>Number of Head</i>	<i>Number of Head</i>	<i>Number of Head</i>	<i>Number of Head</i>	<i>Number of Head</i>	<i>Number of Head</i>
Young Birds						
AL	2,863	12,172	14,164	4,708	168,594	405,130
AR	4,297	18,908	27,942	2,296	124,629	476,695
CA	*	*	*	*	*	*
DE	2,377	7,800	9,475	2,352	56,413	288,772
FL	*	*	*	*	*	*
GA	2,034	28,013	7,761	2,815	83,931	269,040
IN	*	*	*	*	*	*
KY	*	3,056	3,151	*	*	60,319
LA	256	2,802	2,345	38	*	38,249
MD	*	7,562	*	*	*	*
MS	1,696	6,769	4,318	*	112,065	255,094
MO	1,048	3,947	7,676	*	*	215,269
NJ	*	*	*	*	*	*
NY	*	*	*	*	*	*
NC	2,115	17,182	10,552	7,162	110,173	310,092
OH	79	*	*	*	*	17,464
PA	791	2,615	*	*	8,296	62,349
SC	489	1,567	*	1,317	34,704	60,216
TN	821	7,412	5,052	*	*	141,024
TX	517	3,341	7,601	*	39,040	178,540
VA	923	4,127	4,890	1,220	*	133,417
WA	*	*	*	*	*	*
Oth Sts	4,716	16,586	49,106	12,148	308,182	574,054
US	25,022	143,859	154,033	34,056	1,046,027	3,485,724
Mature Birds						
Light	9,868	6,371	85,867	1,690	64,281	383,863
Heavy	841	9,939	9,989	320	74,117	151,970
US	10,709	16,310	95,856	2,010	138,398	535,833

* Included in "Other States" to avoid disclosing individual operations.

¹ The sum of the individual diseases does not add across to the total for "Other States".

Young Turkeys (Mature) Slaughtered: Number, Live Weight, and Average Live Weight, by State and United States, February 2006

State	Number Slaughtered		Live Weight		Average Live Weight	
	January	February	January	February	January	February
	<i>1,000 Head</i>	<i>1,000 Head</i>	<i>1,000 Pounds</i>	<i>1,000 Pounds</i>	<i>Pounds</i>	<i>Pounds</i>
AR	2,416	2,301	48,478	47,110	20.06	20.47
MN	2,511	1,808	70,810	58,237	28.21	32.21
MO	1,525	1,365	51,500	44,469	33.77	32.59
Oth Sts	12,069	12,105	389,947	372,722	32.31	30.79
US	18,521	17,579	560,735	522,538	30.28	29.73

Young Turkeys (Mature) Slaughtered: Pounds Certified and Post-Mortem Condemnations, by State and United States, February 2006

State	Total Chilled and Frozen Pounds Certified ¹		Post-Mortem Condemnations			
			N.Y. Dressed Weight		Percent ²	
	January	February	January	February	January	February
	<i>1,000 Pounds</i>	<i>1,000 Pounds</i>	<i>1,000 Pounds</i>	<i>1,000 Pounds</i>	<i>Percent</i>	<i>Percent</i>
AR	39,820	38,517	728	731	1.67	1.72
MN	56,443	46,409	1,268	1,073	1.99	2.05
MO	40,397	34,974	825	684	1.78	1.71
Oth Sts	306,315	292,492	5,701	5,552	1.62	1.66
US	442,975	412,392	8,522	8,040	1.69	1.71

¹ Ready-to-cook weights.

² Pounds condemned as percent of equivalent N.Y. dressed weight of quantity inspected.

**Turkeys Slaughtered: Number Condemned Post-Mortem by Cause, by Type,
United States, January 2006**

State	Tuber- culosis	Leukosis	Septicemia	Airsac- culitis	Synovitis	Tumors
	<i>Number of Head</i>	<i>Number of Head</i>	<i>Number of Head</i>	<i>Number of Head</i>	<i>Number of Head</i>	<i>Number of Head</i>
Young (Mature) US		24	66,798	8,929	3,532	123
Old (Breeders) US		1	2,325	519	4	125
	Bruises	Cadaver	Contam- ination	Overscald	Other	Total
	<i>Number of Head</i>	<i>Number of Head</i>	<i>Number of Head</i>	<i>Number of Head</i>	<i>Number of Head</i>	<i>Number of Head</i>
Young (Mature) US	516	3,621	3,545	1,585	17,488	106,161
Old (Breeders) US	18	77	101	265	914	4,349

**Turkeys Slaughtered: Number Condemned Post-Mortem by Cause, by Type,
United States, February 2006**

State	Tuber- culosis	Leukosis	Septicemia	Airsac- culitis	Synovitis	Tumors
	<i>Number of Head</i>	<i>Number of Head</i>	<i>Number of Head</i>	<i>Number of Head</i>	<i>Number of Head</i>	<i>Number of Head</i>
Young (Mature) US		34	65,361	9,014	4,170	332
Old (Breeders) US		1	1,884	476	4	45
	Bruises	Cadaver	Contam- ination	Overscald	Other	Total
	<i>Number of Head</i>	<i>Number of Head</i>	<i>Number of Head</i>	<i>Number of Head</i>	<i>Number of Head</i>	<i>Number of Head</i>
Young (Mature) US	437	3,348	3,095	1,552	19,193	106,536
Old (Breeders) US	12	22	75	27	1,193	3,739

Poultry Slaughter Estimates

Data Sources: Data for poultry slaughter estimates are collected by inspectors of the Food Safety and Inspection Service (FSIS), USDA for all Federally Inspected (FI) plants. Over 99 percent of the total U.S. slaughter for any species is under FI. The number of head slaughtered daily, by species and class, as well as condemnations and total live and dressed weights are obtained by shift for each plant. Approximately 320 plants slaughtered poultry in the U.S. under Federal Inspection in 2005. Young chickens were killed in 35 states, young turkeys in 24 states.

Revision Policy: Revisions are generally the result of late reports received by FSIS from plants and are usually less than one-half of 1 percent of the preliminary totals. Revisions for the previous month and year-to-date totals are published in each monthly release. Final data are published in the annual summary released in February and reflect any late reports or corrections which occurred after the monthly revisions were published.

Procedures and Reliability: Plant inspectors submit data electronically for each shift a plant operates. An edit provides checks for the detection of errors such as invalid plant information, duplication, and erroneous data. Data are accumulated to monthly totals for this release.

Data for major slaughter plants with missing reports are adjusted prior to publication to assure that all plants slaughtering a significant portion of a specific class are accounted for. Estimates for missing shifts are made only after verifying that the plant was in operation. Adjustments are based on a shift determined to be similar to the one missing. Late reports replace imputed data as they become available. While there is a varying degree of incompleteness from month to month, it has only a minimal impact on the published totals.

Poultry slaughter estimates are based on a census of operating plants and, therefore, have no sampling error. However, they may be subject to errors such as omissions, duplications, and mistakes in reporting, recording, and processing the data. These errors are minimized through strict quality controls in the edit and summarization process, and a careful review of all reported data for consistency and reasonableness.

State data are published for selected states for young chickens and young turkeys. State data are not published if less than three plants operate for a species in a State, or if one plant has 60 percent or more of the total live weight for that species. Data for all states not published are included in the "Other States" category. Also included in this category are data for published states that are confidential (denoted by an *). Data for all states are included in the U.S. totals.

Definitions

Ante-Mortem Condemnations - Birds condemned prior to their entry into the slaughter plant.

Certified Ready-to-Cook - The weight of poultry certified wholesome by inspection after post-mortem condemnation pounds are removed. Ready-to-cook represents poultry meat ready for the marketing channel.

Ducks - Includes all ducks regardless of age and weight.

Fryer-Roaster Turkeys - Young immature birds, usually under 16 weeks of age. Included with young turkeys.

Mature Chickens - Fowl from breeder and market egg flocks and stags and cocks.

New York Dressed Weight - Carcass weight after only feathers and blood are removed. This weight is approximately 90% of live weight.

Old Turkeys (Breeders) - Fully matured birds held for egg production, usually over 15 months of age.

Other Poultry - Includes all other ready-to-cook products which bear the USDA Inspected for Wholesomeness legend.

Post-Mortem Condemnations - Carcasses or parts condemned by the inspector because of disease or mishandling and removed from the slaughter line and destroyed.

Young Chickens - Commercially grown broilers-fryers and other young immature birds such as roasters and capons.

Young Turkeys (Mature) - Young birds grown to a matured market age, about 5 months.

ACCESS TO REPORTS!!

For your convenience, there are several ways to obtain NASS reports, data products, and services:

INTERNET ACCESS

All NASS reports are available free of charge on the worldwide Internet. For access, connect to the Internet and go to the NASS Home Page at: www.nass.usda.gov.

E-MAIL SUBSCRIPTION

All NASS reports are available by subscription free of charge direct to your e-mail address. Starting with the NASS Home Page at www.nass.usda.gov, under the right navigation, *Receive reports by Email*, click on **National** or **State**. Follow the instructions on the screen.

PRINTED REPORTS OR DATA PRODUCTS

CALL OUR TOLL-FREE ORDER DESK: 800-999-6779 (U.S. and Canada)
Other areas, please call 703-605-6220 FAX: 703-605-6900
(Visa, MasterCard, check, or money order acceptable for payment.)

ASSISTANCE

For **assistance** with general agricultural statistics or further information about NASS or its products or services, contact the **Agricultural Statistics Hotline** at **800-727-9540**, 7:30 a.m. to 4:00 p.m. ET, or e-mail: nass@nass.usda.gov.

The U.S. Department of Agriculture (USDA) prohibits discrimination in all its programs and activities on the basis of race, color, national origin, age, disability, and where applicable, sex, marital status, familial status, parental status, religion, sexual orientation, genetic information, political beliefs, reprisal, or because all or part of an individual's income is derived from any public assistance program. (Not all prohibited bases apply to all programs.) Persons with disabilities who require alternative means for communication of program information (Braille, large print, audiotape, etc.) should contact USDA's TARGET Center at (202) 720-2600 (voice and TDD).

To file a complaint of discrimination, write to USDA, Director, Office of Civil Rights, 1400 Independence Avenue, S.W., Washington, D.C. 20250-9410, or call (800) 795-3272 (voice) or (202) 720-6382 (TDD). USDA is an equal opportunity provider and employer.