



# NASS

FACT FINDERS FOR AGRICULTURE  
UNITED STATES DEPARTMENT OF AGRICULTURE

Washington, D.C.

# Poultry Slaughter

---

Released May 31, 2006, by the National Agricultural Statistics Service (NASS), Agricultural Statistics Board, U.S. Department of Agriculture. For information on *Poultry Slaughter* call John Lange at 202-720-0585, office hours 7:00 a.m. to 4:30 p.m. ET.

## Ready-to-Cook Weight Down 1 Percent

Poultry certified wholesome during April 2006 (ready-to-cook weight) totaled 3.31 billion pounds, down 1 percent from the amount certified in April 2005. Updated totals for March 2006 show that 3.70 billion pounds were certified.

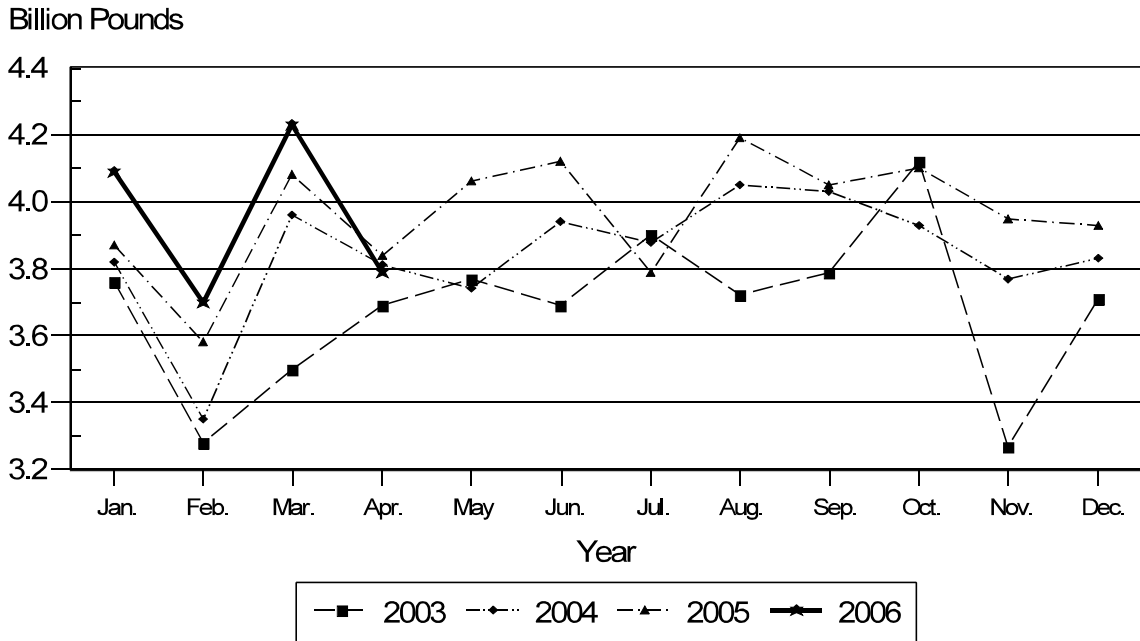
The preliminary total live weight of poultry inspected during April 2006 was 4.42 billion pounds, down 2 percent from 4.49 billion pounds a year ago. Young chickens inspected totaled 3.79 billion pounds, down 1 percent from April 2005. Mature chickens, at 64.5 million pounds, were down 10 percent from the previous year. Turkey inspections totaled 548 million pounds, down 3 percent from a year ago. Ducks totaled 16.0 million pounds, up 9 percent from last year.

Young chickens slaughtered during April 2006 averaged 5.46 pounds per bird, up 2 percent from April 2005. The average live weight of mature chickens was 6.03 pounds per bird, up 10 percent from a year ago. Turkeys slaughtered during April 2006 averaged 28.3 pounds per bird, 2 percent below April 2005.

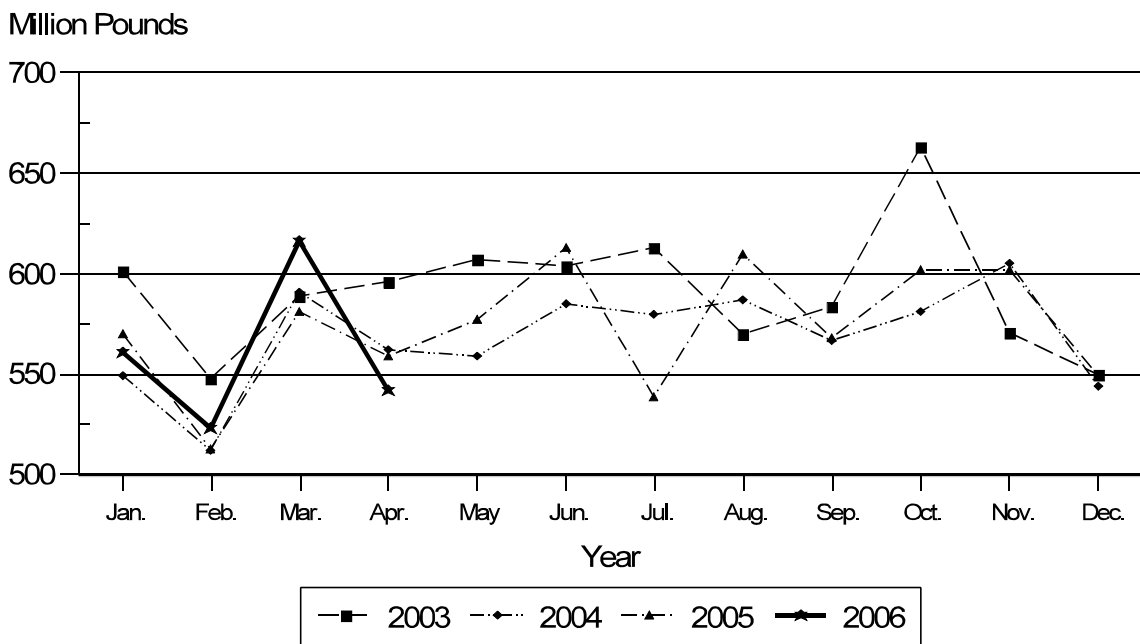
Ante-mortem condemnations during April 2006 totaled 14.0 million pounds. Condemnations were 0.32 percent of the live weight inspected, the same as a year earlier. Post-mortem condemnations, at 45.8 million pounds (N.Y. dressed weight), were 1.15 percent of quantities inspected, compared with 1.16 percent a year earlier.

April 2006 contained 20 weekdays and five Saturdays, while April 2005 had 21 weekdays and five Saturdays.

## Young Chickens: Live Weight Slaughtered, by Month, 2003-2006



## Young Turkeys: Live Weight Slaughtered, by Month, 2003-2006



## Contents

	<b>Page</b>
Poultry Slaughter .....	4
Young Chickens Slaughtered .....	10
Chickens Slaughtered: Number Condemned Post-Mortem .....	12
Young Turkeys (Mature) Slaughtered .....	16
Turkeys Slaughtered: Number Condemned Post-Mortem .....	17
Reliability Statement .....	18
Definitions .....	19
Information Contacts .....	19

**Poultry Slaughter: Number, Live Weight, and Average Live Weight by Type,  
United States, April 2006<sup>1</sup>**

Commodity	Apr 2005	Mar 2006	Apr 2006	Percent of	
				Apr 2005	Mar 2006
	<i>1,000 Head</i>	<i>1,000 Head</i>	<i>1,000 Head</i>	<i>Percent</i>	<i>Percent</i>
Number Slaughtered					
Chickens					
Young	714,995	777,624	694,110	97	89
Mature	13,056	11,617	10,698	82	92
Light	7,103	4,624	4,647	65	100
Heavy	5,953	6,993	6,051	102	87
Total	728,051	789,241	704,808	97	89
Turkeys					
Young	19,377	21,544	19,141	99	89
Old	171	202	240	140	119
Total	19,548	21,746	19,381	99	89
Ducks	2,173	2,520	2,289	105	91
	<i>1,000 pounds</i>	<i>1,000 pounds</i>	<i>1,000 pounds</i>	<i>Percent</i>	<i>Percent</i>
Live Weight					
Chickens					
Young	3,837,850	4,232,333	3,786,441	99	89
Mature	71,834	71,360	64,476	90	90
Light	23,545	15,357	15,512	66	101
Heavy	48,289	56,003	48,964	101	87
Total	3,909,684	4,303,693	3,850,917	98	89
Turkeys					
Young	558,908	615,810	542,249	97	88
Old	4,358	5,493	6,117	140	111
Total	563,266	621,303	548,366	97	88
Ducks	14,650	17,163	15,967	109	93
Other Poultry	322	312	294	91	94
Total Poultry	4,487,922	4,942,471	4,415,544	98	89
	<i>Pounds</i>	<i>Pounds</i>	<i>Pounds</i>	<i>Percent</i>	<i>Percent</i>
Average Live Weight					
Chickens					
Young	5.37	5.44	5.46	102	100
Mature	5.50	6.14	6.03	110	98
Light	3.32	3.32	3.34	101	101
Heavy	8.11	8.01	8.09	100	101
Total	5.37	5.45	5.46	102	100
Turkeys					
Young	28.84	28.58	28.33	98	99
Old	25.33	27.19	25.49	101	94
Total	28.81	28.57	28.29	98	99
Ducks	6.74	6.81	6.98	104	102

See footnote(s) at end of table.

--continued

**Poultry Slaughter: Number, Live Weight, and Average Live Weight by Type,  
United States, April 2006 <sup>1</sup> (continued)**

Commodity	January to Date			Percent of	
	2004	2005	2006	2004	2005
	<i>1,000 Head</i>	<i>1,000 Head</i>	<i>1,000 Head</i>	<i>Percent</i>	<i>Percent</i>
<b>Number Slaughtered</b>					
Chickens					
Young	2,859,926	2,875,812	2,894,775	101	101
Mature	45,343	48,959	44,883	99	92
Light	23,366	25,909	20,191	86	78
Heavy	21,977	23,050	24,692	112	107
Total	2,905,269	2,924,771	2,939,658	101	101
Turkeys					
Young	80,525	76,206	76,785	95	101
Old	751	711	765	102	108
Total	81,276	76,917	77,550	95	101
Ducks	8,499	8,907	9,304	109	104
	<i>1,000 pounds</i>	<i>1,000 pounds</i>	<i>1,000 pounds</i>	<i>Percent</i>	<i>Percent</i>
<b>Live Weight</b>					
Chickens					
Young	14,932,436	15,366,831	15,809,658	106	103
Mature	253,644	273,025	264,606	104	97
Light	78,508	85,900	67,344	86	78
Heavy	175,136	187,125	197,262	113	105
Total	15,186,080	15,639,856	16,074,264	106	103
Turkeys					
Young	2,213,755	2,223,622	2,241,332	101	101
Old	20,382	19,228	20,263	99	105
Total	2,234,137	2,242,850	2,261,595	101	101
Ducks	56,963	60,224	63,541	112	106
Other Poultry	1,180	1,346	1,154	98	86
Total Poultry	17,478,360	17,944,276	18,400,554	105	103
	<i>Pounds</i>	<i>Pounds</i>	<i>Pounds</i>	<i>Percent</i>	<i>Percent</i>
<b>Average Live Weight</b>					
Chickens					
Young	5.22	5.34	5.46	105	102
Mature	5.59	5.58	5.90	106	106
Light	3.36	3.32	3.34	99	101
Heavy	7.97	8.12	7.99	100	98
Total	5.23	5.35	5.47	105	102
Turkeys					
Young	27.49	29.18	29.19	106	100
Old	27.13	27.04	26.49	98	98
Total	27.49	29.16	29.16	106	100
Ducks	6.70	6.76	6.83	102	101

<sup>1</sup> Federally inspected only.

**Poultry Slaughter: Chilled and Frozen, Pounds Certified by Type,  
United States, April 2006 <sup>1</sup>**

Commodity	Apr 2005	Mar 2006	Apr 2006	Percent of	
				Apr 2005	Mar 2006
	<i>1,000 Pounds</i>	<i>1,000 Pounds</i>	<i>1,000 Pounds</i>	<i>Percent</i>	<i>Percent</i>
<b>Chilled</b>					
Chickens					
Young	2,589,651	2,850,685	2,557,752	99	90
Mature	44,025	45,051	40,128	91	89
Light	12,254	8,017	7,876	64	98
Heavy	31,771	37,034	32,252	102	87
Total	2,633,676	2,895,736	2,597,880	99	90
Turkeys					
Young	244,660	278,362	240,667	98	86
Old	2,368	3,404	3,874	164	114
Total	247,028	281,766	244,541	99	87
Ducks	5,167	6,378	6,043	117	95
Other Poultry	174	169	158	91	93
<b>Total Poultry</b>	<b>2,886,045</b>	<b>3,184,049</b>	<b>2,848,622</b>	<b>99</b>	<b>89</b>
<b>Frozen</b>					
Chickens					
Young	265,717	294,381	261,734	99	89
Mature	365	481	312	85	65
Light		40	57		143
Heavy	365	441	255	70	58
Total	266,082	294,862	262,046	98	89
Turkeys					
Young	198,122	209,530	189,663	96	91
Old	874	703	806	92	115
Total	198,996	210,233	190,469	96	91
Ducks	5,349	5,873	5,395	101	92
Other Poultry	29	28	29	100	104
<b>Total Poultry</b>	<b>470,456</b>	<b>510,996</b>	<b>457,939</b>	<b>97</b>	<b>90</b>
<b>Total Chilled and Frozen</b>					
Chickens					
Young	2,855,368	3,145,066	2,819,486	99	90
Mature	44,390	45,532	40,440	91	89
Light	12,254	8,057	7,933	65	98
Heavy	32,136	37,475	32,507	101	87
Total	2,899,758	3,190,598	2,859,926	99	90
Turkeys					
Young	442,782	487,892	430,330	97	88
Old	3,242	4,107	4,680	144	114
Total	446,024	491,999	435,010	98	88
Ducks	10,516	12,251	11,438	109	93
Other Poultry	203	197	187	92	95
<b>Total Poultry</b>	<b>3,356,501</b>	<b>3,695,045</b>	<b>3,306,561</b>	<b>99</b>	<b>89</b>

See footnote(s) at end of table.

--continued

**Poultry Slaughter: Chilled and Frozen, Pounds Certified by Type,  
United States, April 2006<sup>1</sup> (continued)**

Commodity	January to Date			Percent of	
	2004	2005	2006	2004	2005
	<i>1,000 Pounds</i>	<i>1,000 Pounds</i>	<i>1,000 Pounds</i>	<i>Percent</i>	<i>Percent</i>
<b>Chilled</b>					
Chickens					
Young	10,060,244	10,393,435	10,660,629	106	103
Mature	157,448	167,083	164,268	104	98
Light	39,705	44,331	34,494	87	78
Heavy	117,743	122,752	129,774	110	106
Total	10,217,692	10,560,518	10,824,897	106	103
Turkeys					
Young	949,697	1,006,357	996,939	105	99
Old	12,998	12,417	12,764	98	103
Total	962,695	1,018,774	1,009,703	105	99
Ducks	27,109	21,940	23,455	87	107
Other Poultry	658	728	628	95	86
<b>Total Poultry</b>	<b>11,208,154</b>	<b>11,601,960</b>	<b>11,858,683</b>	<b>106</b>	<b>102</b>
<b>Frozen</b>					
Chickens					
Young	948,525	1,050,390	1,095,786	116	104
Mature	1,351	1,329	1,433	106	108
Light	107	5	99	93	1,980
Heavy	1,244	1,324	1,334	107	101
Total	949,876	1,051,719	1,097,219	116	104
Turkeys					
Young	793,268	752,823	776,650	98	103
Old	2,081	2,036	2,566	123	126
Total	795,349	754,859	779,216	98	103
Ducks	17,163	21,163	21,988	128	104
Other Poultry	128	106	100	78	94
<b>Total Poultry</b>	<b>1,762,516</b>	<b>1,827,847</b>	<b>1,898,523</b>	<b>108</b>	<b>104</b>
<b>Total Chilled and Frozen</b>					
Chickens					
Young	11,008,769	11,443,825	11,756,415	107	103
Mature	158,799	168,412	165,701	104	98
Light	39,812	44,336	34,593	87	78
Heavy	118,987	124,076	131,108	110	106
Total	11,167,568	11,612,237	11,922,116	107	103
Turkeys					
Young	1,742,965	1,759,180	1,773,589	102	101
Old	15,079	14,453	15,330	102	106
Total	1,758,044	1,773,633	1,788,919	102	101
Ducks	44,272	43,103	45,443	103	105
Other Poultry	786	834	728	93	87
<b>Total Poultry</b>	<b>12,970,670</b>	<b>13,429,807</b>	<b>13,757,206</b>	<b>106</b>	<b>102</b>

<sup>1</sup> Ready-to-cook weights.

**Poultry Slaughter: Ante-Mortem Condemnations by Type,  
United States, April 2006 <sup>1</sup>**

Commodity	Apr 2005	Mar 2006	Apr 2006	Percent of		January to Date		Percent of 2005
				Apr 2005	Mar 2006	2005	2006	
				<i>1,000 Pounds</i>	<i>1,000 Pounds</i>			
Live Weight				<i>Percent</i>	<i>Percent</i>			<i>Percent</i>
Chickens								
Young	11,747	13,380	11,430	97	85	52,188	50,126	96
Mature	940	794	865	92	109	3,427	3,063	89
Light	392	190	295	75	155	1,320	947	72
Heavy	548	604	570	104	94	2,107	2,116	100
Total	12,687	14,174	12,295	97	87	55,615	53,189	96
Turkeys								
Young	1,481	1,905	1,593	108	84	6,571	6,853	104
Old	20	77	83	415	108	209	231	111
Total	1,501	1,982	1,676	112	85	6,780	7,084	104
Ducks	27	32	27	100	84	116	115	99
Other Poultry						1		
Total Poultry	14,215	16,188	13,998	98	86	62,512	60,388	97
	<i>Percent</i>	<i>Percent</i>	<i>Percent</i>	<i>Percent</i>	<i>Percent</i>	<i>Percent</i>	<i>Percent</i>	<i>Percent</i>
Percent of Total Weight Condemned <sup>2</sup>								
Chickens								
Young	0.31	0.32	0.30	97	94	0.34	0.32	94
Mature	1.31	1.11	1.34	102	121	1.26	1.16	92
Light	1.67	1.24	1.90	114	153	1.54	1.41	92
Heavy	1.13	1.08	1.16	103	107	1.13	1.07	95
Total	0.32	0.33	0.32	100	97	0.36	0.33	92
Turkeys								
Young	0.26	0.31	0.29	112	94	0.30	0.31	103
Old	0.48	1.40	1.36	283	97	1.09	1.14	105
Total	0.27	0.32	0.31	115	97	0.30	0.31	103
Ducks	0.18	0.19	0.17	94	89	0.19	0.18	95
Other Poultry						0.07		
Total Poultry	0.32	0.33	0.32	100	97	0.35	0.33	94

<sup>1</sup> Federally inspected only.

<sup>2</sup> Pounds condemned as a percent of live weight pounds inspected.



**Poultry Slaughter: Post-Mortem Condemnations by Type,  
United States, April 2006 <sup>1</sup>**

Commodity	Apr 2005	Mar 2006	Apr 2006	Percent of		January to Date		Percent of 2005
				Apr 2005	Mar 2006	2005	2006	
	<i>1,000 Pounds</i>	<i>1,000 Pounds</i>	<i>1,000 Pounds</i>	<i>Percent</i>	<i>Percent</i>	<i>1,000 Pounds</i>	<i>1,000 Pounds</i>	<i>Percent</i>
<b>N.Y. Dressed Weight</b>								
Chickens								
Young	34,302	39,272	34,194	100	87	143,666	145,677	101
Mature	3,150	3,005	2,785	88	93	12,559	11,598	92
Light	1,750	1,134	1,273	73	112	6,345	5,312	84
Heavy	1,400	1,871	1,512	108	81	6,214	6,286	101
Total	37,452	42,277	36,979	99	87	156,225	157,275	101
Turkeys								
Young	8,519	9,405	8,078	95	86	35,383	34,045	96
Old	343	275	294	86	107	1,199	990	83
Total	8,862	9,680	8,372	94	86	36,582	35,035	96
Ducks	398	440	396	99	90	1,548	1,636	106
Other Poultry	4	3	3	75	100	18	12	67
<b>Total Poultry</b>	<b>46,716</b>	<b>52,400</b>	<b>45,750</b>	<b>98</b>	<b>87</b>	<b>194,373</b>	<b>193,958</b>	<b>100</b>
	<i>Percent</i>	<i>Percent</i>	<i>Percent</i>	<i>Percent</i>	<i>Percent</i>	<i>Percent</i>	<i>Percent</i>	<i>Percent</i>
<b>Percent of Total Weight Condemned <sup>2</sup></b>								
Chickens								
Young	0.99	1.03	1.00	101	97	1.04	1.02	98
Mature	4.87	4.68	4.80	99	103	5.11	4.87	95
Light	8.25	8.20	9.12	111	111	8.21	8.76	107
Heavy	3.22	3.71	3.43	107	92	3.69	3.54	96
Total	1.06	1.09	1.07	101	98	1.11	1.09	98
Turkeys								
Young	1.69	1.70	1.66	98	98	1.77	1.69	95
Old	8.77	5.54	5.36	61	97	6.93	5.43	78
Total	1.75	1.73	1.70	97	98	1.81	1.72	95
Ducks	3.02	2.84	2.76	91	97	2.86	2.86	100
Other Poultry	1.04	1.07	1.13	109	106	1.49	1.16	78
<b>Total Poultry</b>	<b>1.16</b>	<b>1.18</b>	<b>1.15</b>	<b>99</b>	<b>97</b>	<b>1.20</b>	<b>1.17</b>	<b>98</b>

<sup>1</sup> Federally inspected only.

<sup>2</sup> Pounds condemned as a percent of N.Y. dressed weight of quantity inspected.

**Young Chickens Slaughtered: Number, Live Weight, and Average Live Weight,  
by State and United States, April 2006**

State	Number Slaughtered		Live Weight		Average Live Weight	
	March	April	March	April	March	April
	<i>1,000 Head</i>	<i>1,000 Head</i>	<i>1,000 Pounds</i>	<i>1,000 Pounds</i>	<i>Pounds</i>	<i>Pounds</i>
AL	94,133	84,551	507,276	454,613	5.39	5.38
AR	103,042	92,678	531,467	482,496	5.16	5.21
CA	*	*	*	*	*	*
DE	26,139	22,520	173,719	151,577	6.65	6.73
FL	*	*	*	*	*	*
GA	111,759	101,962	572,784	525,244	5.13	5.15
KY	24,722	20,372	135,918	111,903	5.50	5.49
LA	17,351	15,497	101,083	88,780	5.83	5.73
MD	12,650	10,544	60,552	49,766	4.79	4.72
MS	67,431	58,649	385,362	337,378	5.71	5.75
MO	36,959	33,696	173,455	154,918	4.69	4.60
NJ	*	*	*	*	*	*
NY	*	*	*	*	*	*
NC	60,339	54,943	410,197	373,589	6.80	6.80
OH	3,986	3,430	21,077	18,401	5.29	5.36
PA	10,649	8,949	58,762	49,038	5.52	5.48
SC	24,236	22,059	149,783	136,810	6.18	6.20
TN	23,735	21,156	119,976	106,345	5.05	5.03
TX	59,564	53,020	314,573	278,806	5.28	5.26
VA	28,074	25,487	146,411	133,932	5.22	5.25
WA	*	*	*	*	*	*
Oth Sts	72,855	64,597	369,938	332,845	5.08	5.15
US	777,624	694,110	4,232,333	3,786,441	5.44	5.46

\* Included in "Other States" to avoid disclosing individual operations.

**Young Chickens Slaughtered: Pounds Certified and Post-Mortem Condemnations  
by State and United States, April 2006**

State	Total Chilled and Frozen Pounds Certified <sup>1</sup>		Post-Mortem Condemnations			
			N.Y. Dressed Weight		Percent <sup>2</sup>	
	March	April	March	April	March	April
	<i>1,000 Pounds</i>	<i>1,000 Pounds</i>	<i>1,000 Pounds</i>	<i>1,000 Pounds</i>	<i>Percent</i>	<i>Percent</i>
AL	380,894	339,442	4,732	4,185	1.04	1.02
AR	391,786	356,285	5,675	5,093	1.19	1.17
CA	*	*	*	*	*	*
DE	125,021	109,293	2,839	2,485	1.82	1.82
FL	*	*	*	*	*	*
GA	428,106	390,848	3,554	3,182	0.69	0.67
KY	99,767	82,273	939	623	0.77	0.62
LA	74,158	65,161	744	592	0.82	0.74
MD	43,491	35,775	854	643	1.57	1.44
MS	291,463	260,135	3,941	3,366	1.14	1.11
MO	127,398	114,153	1,440	1,134	0.92	0.81
NJ	*	*	*	*	*	*
NY	*	*	*	*	*	*
NC	313,122	285,289	4,507	3,798	1.22	1.13
OH	15,720	13,684	182	186	0.96	1.13
PA	41,731	35,306	827	679	1.56	1.54
SC	111,632	102,106	670	661	0.50	0.54
TN	87,887	77,786	961	816	0.89	0.85
TX	239,921	214,421	2,645	2,487	0.93	0.99
VA	102,946	93,946	1,044	855	0.79	0.71
WA	*	*	*	*	*	*
Oth Sts	270,023	243,583	3,718	3,409	1.12	1.14
US	3,145,066	2,819,486	39,272	34,194	1.03	1.00

\* Included in "Other States" to avoid disclosing individual operations.

<sup>1</sup> Ready-to-cook weights.

<sup>2</sup> Pounds condemned as percent of equivalent N.Y. dressed weight of quantity inspected.

**Chickens Slaughtered: Number Condemned Post-Mortem by Cause, by Type,  
by State and United States, March 2006**

State	Tuber- culosis	Leukosis	Septicemia	Airsac- culitis	Synovitis	Tumors
	<i>Number of Head</i>	<i>Number of Head</i>	<i>Number of Head</i>	<i>Number of Head</i>	<i>Number of Head</i>	<i>Number of Head</i>
Young Birds						
AL		*	109,878	71,723	*	5,410
AR		966	195,829	93,305	2,234	4,604
CA		*	*	*	*	*
DE		*	123,261	52,855	*	9,421
FL		*	*	*	*	*
GA		629	78,173	74,300	199	8,492
IN		*	*	*	*	*
KY		*	40,672	18,049	*	*
LA		*	26,998	8,130	*	478
MD		1,640	45,615	*	33	*
MS		167	75,962	94,718	229	1,431
MO		745	110,767	19,401	264	1,492
NJ		*	*	*	*	*
NY		*	*	*	*	*
NC		*	95,281	60,423	51	*
OH		3	7,428	*	*	91
PA		*	28,702	18,301	161	535
SC		*	*	*	*	*
TN		436	65,059	24,301	*	1,097
TX		*	81,381	53,716	176	1,741
VA		*	57,207	*	16	*
WA		*	*	*	*	*
Oth Sts		45,501	234,188	139,792	3,193	38,482
US		50,087	1,376,401	729,014	6,556	73,274
Mature Birds						
Light		2,694	139,182	18,266	148	62,824
Heavy		711	56,726	2,134	45	7,411
US		3,405	195,908	20,400	193	70,235

See footnote(s) at end of table.

--continued

**Chickens Slaughtered: Number Condemned Post-Mortem by Cause, by Type,  
by State and United States, March 2006 (continued)**

	Bruises	Cadaver	Contam-ination	Overscald	Other	Total <sup>1</sup>
	<i>Number of Head</i>	<i>Number of Head</i>	<i>Number of Head</i>	<i>Number of Head</i>	<i>Number of Head</i>	<i>Number of Head</i>
Young Birds						
AL	2,617	12,285	17,008	9,621	185,158	415,085
AR	5,281	20,814	35,406	4,363	153,846	516,648
CA	*	*	*	*	*	*
DE	2,473	7,652	11,482	*	60,337	310,454
FL	*	*	*	*	*	*
GA	1,959	26,130	8,628	3,793	89,210	291,513
IN	*	*	*	*	*	*
KY	*	3,711	4,250	1,321	*	94,724
LA	401	3,711	2,128	77	3,216	45,293
MD	*	9,825	*	*	*	*
MS	1,831	6,281	5,725	1,105	129,806	317,255
MO	1,154	4,268	8,090	*	*	229,004
NJ	*	*	*	*	*	*
NY	*	*	*	*	*	*
NC	2,234	18,573	11,465	6,554	118,973	329,807
OH	72	420	*	*	*	16,634
PA	850	4,656	7,750	*	11,166	72,868
SC	530	*	*	*	*	66,417
TN	896	6,072	4,811	618	*	117,928
TX	555	3,719	10,287	*	41,978	196,177
VA	1,017	3,443	5,145	1,395	*	133,796
WA	*	*	*	*	*	*
Oth Sts	5,118	18,957	45,668	12,786	372,456	644,856
US	26,988	150,517	177,843	41,633	1,166,146	3,798,459
Mature Birds						
Light	6,230	6,921	90,846	1,825	60,854	389,790
Heavy	974	11,379	11,487	658	93,497	185,022
US	7,204	18,300	102,333	2,483	154,351	574,812

\* Included in "Other States" to avoid disclosing individual operations.

<sup>1</sup> The sum of the individual diseases does not add across to the total for "Other States".

**Chickens Slaughtered: Number Condemned Post-Mortem by Cause, by Type,  
by State and United States, April 2006**

State	Tuber- culosis	Leukosis	Septicemia	Airsac- culitis	Synovitis	Tumors
	<i>Number of Head</i>	<i>Number of Head</i>	<i>Number of Head</i>	<i>Number of Head</i>	<i>Number of Head</i>	<i>Number of Head</i>
Young Birds						
AL		*	95,388	59,600	*	4,671
AR		1,334	170,052	71,542	1,856	3,921
CA		*	*	*	*	*
DE		*	107,635	41,401	*	6,716
FL		*	*	*	*	*
GA		475	70,827	55,955	187	6,027
IN		*	*	*	*	*
KY		*	30,046	11,518	22	*
LA		*	18,558	8,430	70	365
MD		*	30,566	*	*	*
MS		*	62,842	59,322	164	1,022
MO		601	79,723	12,028	250	1,259
NJ		*	*	*	*	*
NY		*	*	*	*	*
NC		*	85,153	42,199	*	7,229
OH		*	5,179	*	*	64
PA		151	21,356	16,980	*	401
SC		*	*	*	12	*
TN		351	55,644	23,925	122	807
TX		*	66,355	40,407	106	1,381
VA		323	43,533	24,264	*	*
WA		*	*	*	*	*
Oth Sts		49,848	212,590	79,384	3,106	17,245
US		53,083	1,155,447	546,955	5,895	51,108
Mature Birds						
Light		1,812	158,762	27,487	132	68,037
Heavy		532	43,731	1,524	34	6,393
US		2,344	202,493	29,011	166	74,430

See footnote(s) at end of table.

--continued

**Chickens Slaughtered: Number Condemned Post-Mortem by Cause, by Type,  
by State and United States, April 2006 (continued)**

	Bruises	Cadaver	Contam-ination	Overscald	Other	Total <sup>1</sup>
	<i>Number of Head</i>	<i>Number of Head</i>	<i>Number of Head</i>	<i>Number of Head</i>	<i>Number of Head</i>	<i>Number of Head</i>
Young Birds						
AL	2,541	11,658	14,708	8,916	148,558	347,506
AR	4,872	16,387	31,997	6,330	139,849	448,140
CA	*	*	*	*	*	*
DE	2,163	8,129	8,464	*	38,683	260,175
FL	*	*	*	*	*	*
GA	1,843	23,083	9,593	3,096	85,313	256,399
IN	*	*	*	*	*	*
KY	*	2,926	5,280	*	*	59,252
LA	308	2,309	2,143	*	3,759	36,020
MD	*	4,519	*	*	*	*
MS	1,629	4,674	4,677	*	106,562	242,739
MO	920	2,618	7,573	*	*	163,352
NJ	*	*	*	*	*	*
NY	*	*	*	*	*	*
NC	1,826	16,064	10,977	5,989	94,502	264,631
OH	*	437	*	*	*	14,342
PA	717	2,665	6,829	*	10,106	59,916
SC	583	*	*	2,453	*	60,837
TN	593	3,840	4,151	986	9,059	99,478
TX	637	2,993	6,982	*	37,194	158,150
VA	842	3,257	4,416	1,554	*	100,953
WA	*	*	*	*	*	*
Oth Sts	4,205	15,674	37,441	13,821	281,764	539,235
US	23,679	121,233	155,231	43,145	955,349	3,111,125
Mature Birds						
Light	10,916	3,192	88,959	1,973	66,191	427,461
Heavy	957	10,200	8,157	163	80,075	151,766
US	11,873	13,392	97,116	2,136	146,266	579,227

\* Included in "Other States" to avoid disclosing individual operations.

<sup>1</sup> The sum of the individual diseases does not add across to the total for "Other States".

**Young Turkeys (Mature) Slaughtered: Number, Live Weight, and Average Live Weight, by State and United States, April 2006**

State	Number Slaughtered		Live Weight		Average Live Weight	
	March	April	March	April	March	April
	<i>1,000 Head</i>	<i>1,000 Head</i>	<i>1,000 Pounds</i>	<i>1,000 Pounds</i>	<i>Pounds</i>	<i>Pounds</i>
AR	2,724	2,478	54,893	49,102	20.16	19.82
MN	3,023	2,578	85,184	70,695	28.18	27.43
MO	1,530	1,395	49,396	45,359	32.29	32.52
Oth Sts	14,267	12,690	426,337	377,093	29.88	29.72
US	21,544	19,141	615,810	542,249	28.58	28.33

**Young Turkeys (Mature) Slaughtered: Pounds Certified and Post-Mortem Condemnations, by State and United States, April 2006**

State	Total Chilled and Frozen Pounds Certified <sup>1</sup>		Post-Mortem Condemnations			
			N.Y. Dressed Weight		Percent <sup>2</sup>	
	March	April	March	April	March	April
	<i>1,000 Pounds</i>	<i>1,000 Pounds</i>	<i>1,000 Pounds</i>	<i>1,000 Pounds</i>	<i>Percent</i>	<i>Percent</i>
AR	44,833	40,372	778	737	1.57	1.67
MN	67,938	56,441	1,625	1,338	2.12	2.10
MO	38,807	35,841	851	749	1.91	1.84
Oth Sts	336,314	297,676	6,151	5,254	1.60	1.55
US	487,892	430,330	9,405	8,078	1.70	1.66

<sup>1</sup> Ready-to-cook weights.

<sup>2</sup> Pounds condemned as percent of equivalent N.Y. dressed weight of quantity inspected.



**Turkeys Slaughtered: Number Condemned Post-Mortem by Cause, by Type,  
United States, March 2006**

State	Tuber- culosis	Leukosis	Septicemia	Airsac- culitis	Synovitis	Tumors
	<i>Number of Head</i>	<i>Number of Head</i>	<i>Number of Head</i>	<i>Number of Head</i>	<i>Number of Head</i>	<i>Number of Head</i>
Young (Mature) US		22	74,606	11,342	4,617	185
Old (Breeders) US		3	2,860	639	12	89
	Bruises	Cadaver	Contam- ination	Overscald	Other	Total
	<i>Number of Head</i>	<i>Number of Head</i>	<i>Number of Head</i>	<i>Number of Head</i>	<i>Number of Head</i>	<i>Number of Head</i>
Young (Mature) US	488	3,417	4,141	1,904	20,509	121,231
Old (Breeders) US	19	47	107	6	1,575	5,357

**Turkeys Slaughtered: Number Condemned Post-Mortem by Cause, by Type,  
United States, April 2006**

State	Tuber- culosis	Leukosis	Septicemia	Airsac- culitis	Synovitis	Tumors
	<i>Number of Head</i>	<i>Number of Head</i>	<i>Number of Head</i>	<i>Number of Head</i>	<i>Number of Head</i>	<i>Number of Head</i>
Young (Mature) US		33	56,351	8,596	3,923	69
Old (Breeders) US		6	3,453	550	2	125
	Bruises	Cadaver	Contam- ination	Overscald	Other	Total
	<i>Number of Head</i>	<i>Number of Head</i>	<i>Number of Head</i>	<i>Number of Head</i>	<i>Number of Head</i>	<i>Number of Head</i>
Young (Mature) US	531	3,415	4,344	1,713	19,680	98,655
Old (Breeders) US	15	61	213	4	1,856	6,285

## Poultry Slaughter Estimates

**Data Sources:** Data for poultry slaughter estimates are collected by inspectors of the Food Safety and Inspection Service (FSIS), USDA for all Federally Inspected (FI) plants. Over 99 percent of the total U.S. slaughter for any species is under FI. The number of head slaughtered daily, by species and class, as well as condemnations and total live and dressed weights are obtained by shift for each plant. Approximately 320 plants slaughtered poultry in the U.S. under Federal Inspection in 2005. Young chickens were killed in 35 states, young turkeys in 24 states.

**Revision Policy:** Revisions are generally the result of late reports received by FSIS from plants and are usually less than one-half of 1 percent of the preliminary totals. Revisions for the previous month and year-to-date totals are published in each monthly release. Final data are published in the annual summary released in February and reflect any late reports or corrections which occurred after the monthly revisions were published.

**Procedures and Reliability:** Plant inspectors submit data electronically for each shift a plant operates. An edit provides checks for the detection of errors such as invalid plant information, duplication, and erroneous data. Data are accumulated to monthly totals for this release.

Data for major slaughter plants with missing reports are adjusted prior to publication to assure that all plants slaughtering a significant portion of a specific class are accounted for. Estimates for missing shifts are made only after verifying that the plant was in operation. Adjustments are based on a shift determined to be similar to the one missing. Late reports replace imputed data as they become available. While there is a varying degree of incompleteness from month to month, it has only a minimal impact on the published totals.

Poultry slaughter estimates are based on a census of operating plants and, therefore, have no sampling error. However, they may be subject to errors such as omissions, duplications, and mistakes in reporting, recording, and processing the data. These errors are minimized through strict quality controls in the edit and summarization process, and a careful review of all reported data for consistency and reasonableness.

State data are published for selected states for young chickens and young turkeys. State data are not published if less than three plants operate for a species in a State, or if one plant has 60 percent or more of the total live weight for that species. Data for all states not published are included in the "Other States" category. Also included in this category are data for published states that are confidential (denoted by an \*). Data for all states are included in the U.S. totals.

## Definitions

**Ante-Mortem Condemnations** - Birds condemned prior to their entry into the slaughter plant.

**Certified Ready-to-Cook** - The weight of poultry certified wholesome by inspection after post-mortem condemnation pounds are removed. Ready-to-cook represents poultry meat ready for the marketing channel.

**Ducks** - Includes all ducks regardless of age and weight.

**Fryer-Roaster Turkeys** - Young immature birds, usually under 16 weeks of age. Included with young turkeys.

**Mature Chickens** - Fowl from breeder and market egg flocks and stags and cocks.

**New York Dressed Weight** - Carcass weight after only feathers and blood are removed. This weight is approximately 90% of live weight.

**Old Turkeys (Breeders)** - Fully matured birds held for egg production, usually over 15 months of age.

**Other Poultry** - Includes all other ready-to-cook products which bear the USDA Inspected for Wholesomeness legend.

**Post-Mortem Condemnations** - Carcasses or parts condemned by the inspector because of disease or mishandling and removed from the slaughter line and destroyed.

**Young Chickens** - Commercially grown broilers-fryers and other young immature birds such as roasters and capons.

**Young Turkeys (Mature)** - Young birds grown to a matured market age, about 5 months.

## Information Contacts

Listed below are the commodity specialists in the Livestock Branch of the National Agricultural Statistics Service to contact for additional information.

Dan Kerestes, Chief, Livestock Branch . . . . . (202) 720-3570

Darin Jantzi, Head, Poultry and Specialty Commodities Section . . . . . (202) 720-3570

    David Colwell - Cold Storage . . . . . (202) 720-8784

    Fleming Gibson - Egg Products . . . . . (202) 690-3237

    John Lange - Turkeys . . . . . (202) 720-0585

    Sharyn Lavender - Chickens and Eggs . . . . . (202) 720-3244

    Jody Roberts - Broilers . . . . . (202) 690-8632

## ACCESS TO REPORTS!!

---

For your convenience, there are several ways to obtain NASS reports, data products, and services:

### INTERNET ACCESS

All NASS reports are available free of charge on the worldwide Internet. For access, connect to the Internet and go to the NASS Home Page at: [www.nass.usda.gov](http://www.nass.usda.gov).

### E-MAIL SUBSCRIPTION

All NASS reports are available by subscription free of charge direct to your e-mail address. Starting with the NASS Home Page at [www.nass.usda.gov](http://www.nass.usda.gov), under the right navigation, *Receive reports by Email*, click on **National** or **State**. Follow the instructions on the screen.

-----

### PRINTED REPORTS OR DATA PRODUCTS

**CALL OUR TOLL-FREE ORDER DESK: 800-999-6779 (U.S. and Canada)**  
**Other areas, please call 703-605-6220      FAX: 703-605-6900**  
**(Visa, MasterCard, check, or money order acceptable for payment.)**

-----

### ASSISTANCE

For **assistance** with general agricultural statistics or further information about NASS or its products or services, contact the **Agricultural Statistics Hotline** at **800-727-9540**, 7:30 a.m. to 4:00 p.m. ET, or e-mail: [nass@nass.usda.gov](mailto:nass@nass.usda.gov).

The U.S. Department of Agriculture (USDA) prohibits discrimination in all its programs and activities on the basis of race, color, national origin, age, disability, and where applicable, sex, marital status, familial status, parental status, religion, sexual orientation, genetic information, political beliefs, reprisal, or because all or part of an individual's income is derived from any public assistance program. (Not all prohibited bases apply to all programs.) Persons with disabilities who require alternative means for communication of program information (Braille, large print, audiotape, etc.) should contact USDA's TARGET Center at (202) 720-2600 (voice and TDD).

To file a complaint of discrimination, write to USDA, Director, Office of Civil Rights, 1400 Independence Avenue, S.W., Washington, D.C. 20250-9410, or call (800) 795-3272 (voice) or (202) 720-6382 (TDD). USDA is an equal opportunity provider and employer.