



# NASS

FACT FINDERS FOR AGRICULTURE  
UNITED STATES DEPARTMENT OF AGRICULTURE

Washington, D.C.

# Poultry Slaughter

---

Released June 30, 2006, by the National Agricultural Statistics Service (NASS), Agricultural Statistics Board, U.S. Department of Agriculture. For information on *Poultry Slaughter* call John Lange at 202-720-0585, office hours 7:00 a.m. to 4:30 p.m. ET.

## Ready-to-Cook Weight Up 6 Percent From Last Year

Poultry certified wholesome during May 2006 (ready-to-cook weight) totaled 3.76 billion pounds, up 6 percent from the amount certified in May 2005. Totals for April 2006 were unchanged with 3.31 billion pounds certified.

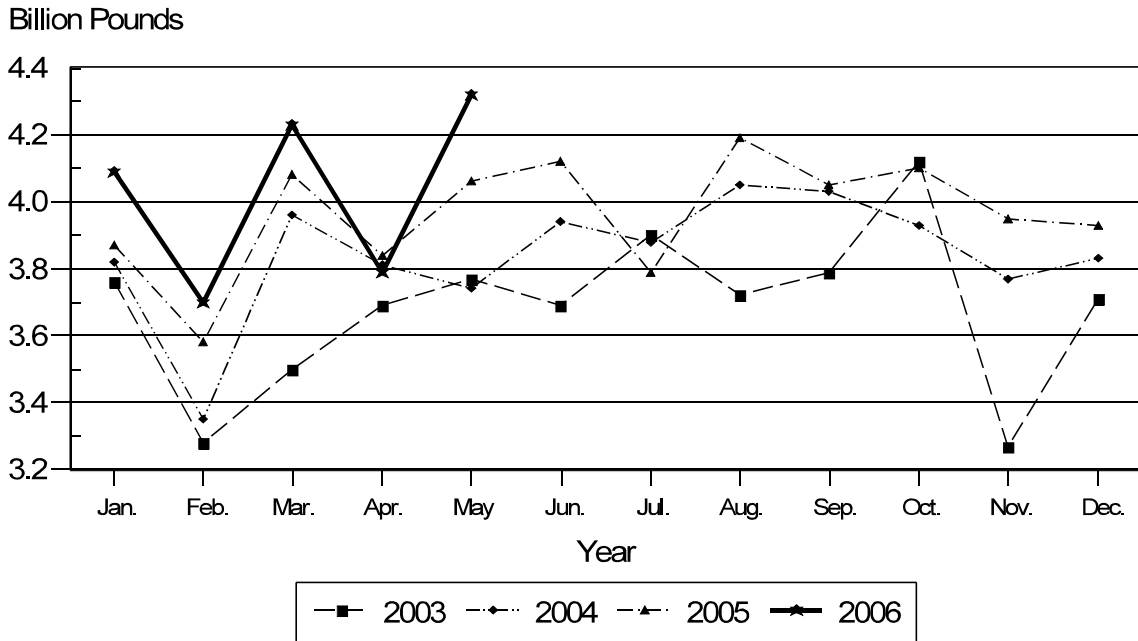
The preliminary total live weight of poultry inspected during May 2006 was 5.03 billion pounds, up 6 percent from 4.73 billion pounds a year ago. Young chickens inspected totaled 4.32 billion pounds, up 6 percent from May 2005. Mature chickens, at 72.3 million pounds, were down slightly from the previous year. Turkey inspections totaled 625 million pounds, an increase of 7 percent from a year ago. Ducks totaled 17.1 million pounds, up 10 percent from last year.

Young chickens slaughtered during May 2006 averaged 5.49 pounds per bird, up 2 percent from May 2005. The average live weight of mature chickens was 6.11 pounds per bird, up 9 percent from a year ago. Turkeys slaughtered during May 2006 averaged 28.6 pounds per bird, 1 percent above May 2005.

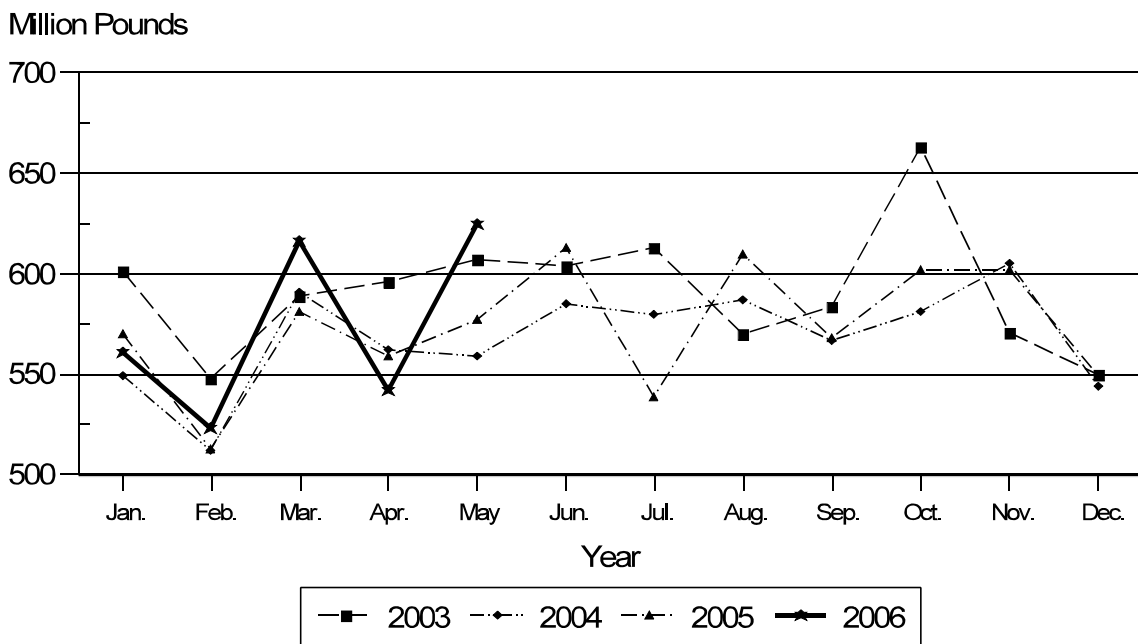
Ante-mortem condemnations during May 2006 totaled 16.7 million pounds. Condemnations were 0.33 percent of the live weight inspected, as compared with 0.32 a year earlier. Post-mortem condemnations, at 49.9 million pounds (N.Y. dressed weight), were 1.10 percent of quantities inspected, compared with 1.14 percent a year earlier.

May 2006 contained 23 weekdays (including one holiday) and four Saturdays, while May 2005 had 22 weekdays (including one holiday) and four Saturdays.

## Young Chickens: Live Weight Slaughtered, by Month, 2003-2006



## Young Turkeys: Live Weight Slaughtered, by Month, 2003-2006



## Contents

	<b>Page</b>
Poultry Slaughter .....	4
Young Chickens Slaughtered .....	10
Chickens Slaughtered: Number Condemned Post-Mortem .....	12
Young Turkeys (Mature) Slaughtered .....	16
Turkeys Slaughtered: Number Condemned Post-Mortem .....	17
Reliability Statement .....	18
Definitions .....	19
Information Contacts .....	19

**Poultry Slaughter: Number, Live Weight, and Average Live Weight by Type,  
United States, May 2006<sup>1</sup>**

Commodity	May 2005	Apr 2006	May 2006	Percent of	
				May 2005	Apr 2006
	<i>1,000 Head</i>	<i>1,000 Head</i>	<i>1,000 Head</i>	<i>Percent</i>	<i>Percent</i>
Number Slaughtered					
Chickens					
Young	758,078	694,110	786,854	104	113
Mature	12,977	10,698	11,834	91	111
Light	6,829	4,647	4,953	73	107
Heavy	6,148	6,051	6,881	112	114
Total	771,055	704,808	798,688	104	113
Turkeys					
Young	20,296	19,141	21,689	107	113
Old	203	240	129	64	54
Total	20,499	19,381	21,818	106	113
Ducks	2,321	2,289	2,523	109	110
	<i>1,000 pounds</i>	<i>1,000 pounds</i>	<i>1,000 pounds</i>	<i>Percent</i>	<i>Percent</i>
Live Weight					
Chickens					
Young	4,060,294	3,786,441	4,319,094	106	114
Mature	72,568	64,476	72,267	100	112
Light	22,648	15,512	16,369	72	106
Heavy	49,920	48,964	55,898	112	114
Total	4,132,862	3,850,917	4,391,361	106	114
Turkeys					
Young	576,830	542,249	621,081	108	115
Old	5,381	6,117	3,484	65	57
Total	582,211	548,366	624,565	107	114
Ducks	15,567	15,967	17,108	110	107
Other Poultry	422	294	381	90	130
Total Poultry	4,731,062	4,415,544	5,033,415	106	114
	<i>Pounds</i>	<i>Pounds</i>	<i>Pounds</i>	<i>Percent</i>	<i>Percent</i>
Average Live Weight					
Chickens					
Young	5.36	5.46	5.49	102	101
Mature	5.59	6.03	6.11	109	101
Light	3.32	3.34	3.30	99	99
Heavy	8.12	8.09	8.12	100	100
Total	5.36	5.46	5.50	103	101
Turkeys					
Young	28.42	28.33	28.64	101	101
Old	26.51	25.49	27.01	102	106
Total	28.40	28.29	28.63	101	101
Ducks	6.70	6.98	6.78	101	97

See footnote(s) at end of table.

--continued

**Poultry Slaughter: Number, Live Weight, and Average Live Weight by Type,  
United States, May 2006<sup>1</sup> (continued)**

Commodity	January to Date			Percent of	
	2004	2005	2006	2004	2005
	<i>1,000 Head</i>	<i>1,000 Head</i>	<i>1,000 Head</i>	<i>Percent</i>	<i>Percent</i>
<b>Number Slaughtered</b>					
Chickens					
Young	3,574,647	3,633,890	3,681,629	103	101
Mature	56,934	61,936	56,717	100	92
Light	29,478	32,738	25,144	85	77
Heavy	27,456	29,198	31,573	115	108
Total	3,631,581	3,695,826	3,738,346	103	101
Turkeys					
Young	100,759	96,502	98,474	98	102
Old	947	914	894	94	98
Total	101,706	97,416	99,368	98	102
Ducks	10,545	11,228	11,827	112	105
	<i>1,000 pounds</i>	<i>1,000 pounds</i>	<i>1,000 pounds</i>	<i>Percent</i>	<i>Percent</i>
<b>Live Weight</b>					
Chickens					
Young	18,676,232	19,427,125	20,128,752	108	104
Mature	317,944	345,593	336,873	106	97
Light	98,949	108,548	83,713	85	77
Heavy	218,995	237,045	253,160	116	107
Total	18,994,176	19,772,718	20,465,625	108	104
Turkeys					
Young	2,772,432	2,800,452	2,862,413	103	102
Old	25,686	24,609	23,747	92	96
Total	2,798,118	2,825,061	2,886,160	103	102
Ducks	70,729	75,791	80,649	114	106
Other Poultry	1,559	1,768	1,535	98	87
Total Poultry	21,864,582	22,675,338	23,433,969	107	103
	<i>Pounds</i>	<i>Pounds</i>	<i>Pounds</i>	<i>Percent</i>	<i>Percent</i>
<b>Average Live Weight</b>					
Chickens					
Young	5.22	5.35	5.47	105	102
Mature	5.58	5.58	5.94	106	106
Light	3.36	3.32	3.33	99	100
Heavy	7.98	8.12	8.02	101	99
Total	5.23	5.35	5.47	105	102
Turkeys					
Young	27.52	29.02	29.07	106	100
Old	27.12	26.92	26.56	98	99
Total	27.51	29.00	29.05	106	100
Ducks	6.71	6.75	6.82	102	101

<sup>1</sup> Federally inspected only.

**Poultry Slaughter: Chilled and Frozen, Pounds Certified by Type,  
United States, May 2006 <sup>1</sup>**

Commodity	May 2005	Apr 2006	May 2006	Percent of	
				May 2005	Apr 2006
	<i>1,000 Pounds</i>	<i>1,000 Pounds</i>	<i>1,000 Pounds</i>	<i>Percent</i>	<i>Percent</i>
<b>Chilled</b>					
Chickens					
Young	2,743,732	2,557,752	2,916,351	106	114
Mature	44,396	40,128	44,981	101	112
Light	11,836	7,876	8,376	71	106
Heavy	32,560	32,252	36,605	112	113
Total	2,788,128	2,597,880	2,961,332	106	114
Turkeys					
Young	250,637	240,667	268,988	107	112
Old	3,448	3,874	2,439	71	63
Total	254,085	244,541	271,427	107	111
Ducks	5,827	6,043	6,208	107	103
Other Poultry	232	158	202	87	128
<b>Total Poultry</b>	<b>3,048,272</b>	<b>2,848,622</b>	<b>3,239,169</b>	<b>106</b>	<b>114</b>
<b>Frozen</b>					
Chickens					
Young	279,507	261,734	293,693	105	112
Mature	706	312	398	56	128
Light		57			
Heavy	706	255	398	56	156
Total	280,213	262,046	294,091	105	112
Turkeys					
Young	206,387	189,663	223,814	108	118
Old	547	806	152	28	19
Total	206,934	190,469	223,966	108	118
Ducks	5,392	5,395	6,082	113	113
Other Poultry	28	29	41	146	141
<b>Total Poultry</b>	<b>492,567</b>	<b>457,939</b>	<b>524,180</b>	<b>106</b>	<b>114</b>
<b>Total Chilled and Frozen</b>					
Chickens					
Young	3,023,239	2,819,486	3,210,044	106	114
Mature	45,102	40,440	45,379	101	112
Light	11,836	7,933	8,376	71	106
Heavy	33,266	32,507	37,003	111	114
Total	3,068,341	2,859,926	3,255,423	106	114
Turkeys					
Young	457,024	430,330	492,802	108	115
Old	3,995	4,680	2,591	65	55
Total	461,019	435,010	495,393	107	114
Ducks	11,219	11,438	12,290	110	107
Other Poultry	260	187	243	93	130
<b>Total Poultry</b>	<b>3,540,839</b>	<b>3,306,561</b>	<b>3,763,349</b>	<b>106</b>	<b>114</b>

See footnote(s) at end of table.

--continued

**Poultry Slaughter: Chilled and Frozen, Pounds Certified by Type,  
United States, May 2006<sup>1</sup> (continued)**

Commodity	January to Date			Percent of	
	2004	2005	2006	2004	2005
	<i>1,000 Pounds</i>	<i>1,000 Pounds</i>	<i>1,000 Pounds</i>	<i>Percent</i>	<i>Percent</i>
<b>Chilled</b>					
Chickens					
Young	12,583,795	13,137,167	13,576,980	108	103
Mature	196,303	211,479	209,249	107	99
Light	49,671	56,167	42,870	86	76
Heavy	146,632	155,312	166,379	113	107
Total	12,780,098	13,348,646	13,786,229	108	103
Turkeys					
Young	1,178,320	1,256,994	1,265,927	107	101
Old	16,118	15,865	15,203	94	96
Total	1,194,438	1,272,859	1,281,130	107	101
Ducks	33,033	27,767	29,663	90	107
Other Poultry	856	960	830	97	86
<b>Total Poultry</b>	<b>14,008,425</b>	<b>14,650,232</b>	<b>15,097,852</b>	<b>108</b>	<b>103</b>
<b>Frozen</b>					
Chickens					
Young	1,196,409	1,329,897	1,389,479	116	104
Mature	1,720	2,035	1,831	106	90
Light	274	5	99	36	1,980
Heavy	1,446	2,030	1,732	120	85
Total	1,198,129	1,331,932	1,391,310	116	104
Turkeys					
Young	1,009,964	959,210	1,000,464	99	104
Old	2,778	2,583	2,718	98	105
Total	1,012,742	961,793	1,003,182	99	104
Ducks	21,285	26,555	28,070	132	106
Other Poultry	177	134	141	80	105
<b>Total Poultry</b>	<b>2,232,333</b>	<b>2,320,414</b>	<b>2,422,703</b>	<b>109</b>	<b>104</b>
<b>Total Chilled and Frozen</b>					
Chickens					
Young	13,780,204	14,467,064	14,966,459	109	103
Mature	198,023	213,514	211,080	107	99
Light	49,945	56,172	42,969	86	76
Heavy	148,078	157,342	168,111	114	107
Total	13,978,227	14,680,578	15,177,539	109	103
Turkeys					
Young	2,188,284	2,216,204	2,266,391	104	102
Old	18,896	18,448	17,921	95	97
Total	2,207,180	2,234,652	2,284,312	103	102
Ducks	54,318	54,322	57,733	106	106
Other Poultry	1,033	1,094	971	94	89
<b>Total Poultry</b>	<b>16,240,758</b>	<b>16,970,646</b>	<b>17,520,555</b>	<b>108</b>	<b>103</b>

<sup>1</sup> Ready-to-cook weights.

**Poultry Slaughter: Ante-Mortem Condemnations by Type,  
United States, May 2006 <sup>1</sup>**

Commodity	May 2005	Apr 2006	May 2006	Percent of		January to Date		Percent of 2005
				May 2005	Apr 2006	2005	2006	
	<i>1,000 Pounds</i>	<i>1,000 Pounds</i>	<i>1,000 Pounds</i>	<i>Percent</i>	<i>Percent</i>	<i>1,000 Pounds</i>	<i>1,000 Pounds</i>	<i>Percent</i>
Live Weight								
Chickens								
Young	12,695	11,430	13,958	110	122	64,883	64,084	99
Mature	984	865	996	101	115	4,411	4,059	92
Light	347	295	283	82	96	1,667	1,230	74
Heavy	637	570	713	112	125	2,744	2,829	103
Total	13,679	12,295	14,954	109	122	69,294	68,143	98
Turkeys								
Young	1,426	1,593	1,662	117	104	7,997	8,515	106
Old	32	83	59	184	71	241	290	120
Total	1,458	1,676	1,721	118	103	8,238	8,805	107
Ducks	33	27	37	112	137	149	152	102
Other Poultry			1			1	1	100
Total Poultry	15,170	13,998	16,713	110	119	77,682	77,101	99
	<i>Percent</i>	<i>Percent</i>	<i>Percent</i>	<i>Percent</i>	<i>Percent</i>	<i>Percent</i>	<i>Percent</i>	<i>Percent</i>
Percent of Total Weight Condemned <sup>2</sup>								
Chickens								
Young	0.31	0.30	0.32	103	107	0.33	0.32	97
Mature	1.36	1.34	1.38	101	103	1.28	1.20	94
Light	1.54	1.90	1.73	112	91	1.54	1.47	95
Heavy	1.28	1.16	1.28	100	110	1.16	1.12	97
Total	0.33	0.32	0.34	103	106	0.35	0.33	94
Turkeys								
Young	0.25	0.29	0.27	108	93	0.29	0.30	103
Old	0.58	1.36	1.69	291	124	0.98	1.22	124
Total	0.25	0.31	0.28	112	90	0.29	0.31	107
Ducks	0.21	0.17	0.22	105	129	0.20	0.19	95
Other Poultry			0.26			0.06	0.07	117
Total Poultry	0.32	0.32	0.33	103	103	0.34	0.33	97

<sup>1</sup> Federally inspected only.

<sup>2</sup> Pounds condemned as a percent of live weight pounds inspected.



**Poultry Slaughter: Post-Mortem Condemnations by Type,  
United States, May 2006 <sup>1</sup>**

Commodity	May 2005	Apr 2006	May 2006	Percent of		January to Date		Percent of 2005
				May 2005	Apr 2006	2005	2006	
				<i>1,000 Pounds</i>				
<i>N.Y. Dressed Weight</i>	<i>1,000 Pounds</i>	<i>1,000 Pounds</i>	<i>1,000 Pounds</i>	<i>Percent</i>	<i>Percent</i>	<i>1,000 Pounds</i>	<i>1,000 Pounds</i>	<i>Percent</i>
Chickens								
Young	36,278	34,194	37,320	103	109	179,944	182,997	102
Mature	3,249	2,785	3,045	94	109	15,808	14,643	93
Light	1,774	1,273	1,321	74	104	8,119	6,633	82
Heavy	1,475	1,512	1,724	117	114	7,689	8,010	104
Total	39,527	36,979	40,365	102	109	195,752	197,640	101
Turkeys								
Young	8,362	8,078	8,936	107	111	43,745	42,981	98
Old	399	294	196	49	67	1,598	1,186	74
Total	8,761	8,372	9,132	104	109	45,343	44,167	97
Ducks	374	396	399	107	101	1,922	2,035	106
Other Poultry	5	3	5	100	167	23	17	74
Total Poultry	48,667	45,750	49,901	103	109	243,040	243,859	100
	<i>Percent</i>	<i>Percent</i>	<i>Percent</i>	<i>Percent</i>	<i>Percent</i>	<i>Percent</i>	<i>Percent</i>	<i>Percent</i>
<i>Percent of Total Weight Condemned <sup>2</sup></i>								
Chickens								
Young	0.99	1.00	0.96	97	96	1.03	1.01	98
Mature	4.97	4.80	4.68	94	98	5.08	4.83	95
Light	8.70	9.12	8.97	103	98	8.31	8.80	106
Heavy	3.29	3.43	3.43	104	100	3.60	3.52	98
Total	1.06	1.07	1.02	96	95	1.10	1.07	97
Turkeys								
Young	1.61	1.66	1.60	99	96	1.74	1.67	96
Old	8.26	5.36	6.25	76	117	7.22	5.55	77
Total	1.67	1.70	1.63	98	96	1.78	1.70	96
Ducks	2.68	2.76	2.59	97	94	2.82	2.80	99
Other Poultry	1.04	1.13	1.46	140	129	1.45	1.23	85
Total Poultry	1.14	1.15	1.10	96	96	1.19	1.16	97

<sup>1</sup> Federally inspected only.

<sup>2</sup> Pounds condemned as a percent of N.Y. dressed weight of quantity inspected.

**Young Chickens Slaughtered: Number, Live Weight, and Average Live Weight,  
by State and United States, May 2006**

State	Number Slaughtered		Live Weight		Average Live Weight	
	April	May	April	May	April	May
	<i>1,000 Head</i>	<i>1,000 Head</i>	<i>1,000 Pounds</i>	<i>1,000 Pounds</i>	<i>Pounds</i>	<i>Pounds</i>
AL	84,551	96,706	454,613	519,472	5.38	5.37
AR	92,678	100,947	482,496	530,432	5.21	5.25
CA	*	*	*	*	*	*
DE	22,520	26,769	151,577	181,096	6.73	6.77
FL	*	*	*	*	*	*
GA	101,962	115,407	525,244	594,429	5.15	5.15
KY	20,372	24,424	111,903	136,047	5.49	5.57
LA	15,497	18,063	88,780	102,838	5.73	5.69
MD	10,544	11,917	49,766	57,572	4.72	4.83
MS	58,649	67,835	337,378	391,217	5.75	5.77
MO	33,696	36,612	154,918	169,940	4.60	4.64
NJ	*	*	*	*	*	*
NY	*	*	*	*	*	*
NC	54,943	62,374	373,589	430,091	6.80	6.90
OH	3,430	3,959	18,401	21,406	5.36	5.41
PA	8,949	10,500	49,038	58,565	5.48	5.58
SC	22,059	24,573	136,810	153,565	6.20	6.25
TN	21,156	24,836	106,345	127,265	5.03	5.12
TX	53,020	58,197	278,806	307,935	5.26	5.29
VA	25,487	28,760	133,932	148,910	5.25	5.18
WA	*	*	*	*	*	*
Oth Sts	64,597	74,975	332,845	388,314	5.15	5.18
US	694,110	786,854	3,786,441	4,319,094	5.46	5.49

\* Included in "Other States" to avoid disclosing individual operations.

**Young Chickens Slaughtered: Pounds Certified and Post-Mortem Condemnations  
by State and United States, May 2006**

State	Total Chilled and Frozen Pounds Certified <sup>1</sup>		Post-Mortem Condemnations			
			N.Y. Dressed Weight		Percent <sup>2</sup>	
	April	May	April	May	April	May
	<i>1,000 Pounds</i>	<i>1,000 Pounds</i>	<i>1,000 Pounds</i>	<i>1,000 Pounds</i>	<i>Percent</i>	<i>Percent</i>
AL	339,442	387,176	4,185	4,550	1.02	0.97
AR	356,285	392,425	5,093	5,126	1.17	1.07
CA	*	*	*	*	*	*
DE	109,293	130,941	2,485	2,927	1.82	1.80
FL	*	*	*	*	*	*
GA	390,848	441,819	3,182	3,506	0.67	0.66
KY	82,273	99,508	623	848	0.62	0.69
LA	65,161	75,279	592	568	0.74	0.61
MD	35,775	41,657	643	574	1.44	1.11
MS	260,135	300,598	3,366	3,649	1.11	1.04
MO	114,153	124,765	1,134	1,116	0.81	0.73
NJ	*	*	*	*	*	*
NY	*	*	*	*	*	*
NC	285,289	324,259	3,798	4,249	1.13	1.10
OH	13,684	15,915	186	229	1.13	1.19
PA	35,306	42,092	679	899	1.54	1.71
SC	102,106	114,354	661	871	0.54	0.63
TN	77,786	92,983	816	960	0.85	0.84
TX	214,421	237,009	2,487	2,425	0.99	0.87
VA	93,946	104,654	855	970	0.71	0.72
WA	*	*	*	*	*	*
Oth Sts	243,583	284,610	3,409	3,853	1.14	1.10
US	2,819,486	3,210,044	34,194	37,320	1.00	0.96

\* Included in "Other States" to avoid disclosing individual operations.

<sup>1</sup> Ready-to-cook weights.

<sup>2</sup> Pounds condemned as percent of equivalent N.Y. dressed weight of quantity inspected.

**Chickens Slaughtered: Number Condemned Post-Mortem by Cause, by Type,  
by State and United States, April 2006**

State	Tuber- culosis	Leukosis	Septicemia	Airsac- culitis	Synovitis	Tumors
	<i>Number of Head</i>	<i>Number of Head</i>	<i>Number of Head</i>	<i>Number of Head</i>	<i>Number of Head</i>	<i>Number of Head</i>
Young Birds						
AL		*	95,388	59,600	*	4,671
AR		1,334	170,052	71,542	1,856	3,921
CA		*	*	*	*	*
DE		*	107,635	41,401	*	6,716
FL		*	*	*	*	*
GA		475	70,827	55,955	187	6,027
IN		*	*	*	*	*
KY		*	30,046	11,518	22	*
LA		*	18,558	8,430	70	365
MD		*	30,566	*	*	*
MS		*	62,842	59,322	164	1,022
MO		601	79,723	12,028	250	1,259
NJ		*	*	*	*	*
NY		*	*	*	*	*
NC		*	85,153	42,199	*	7,229
OH		*	5,179	*	*	64
PA		151	21,356	16,980	*	401
SC		*	*	*	12	*
TN		351	55,644	23,925	122	807
TX		*	66,355	40,407	106	1,381
VA		323	43,533	24,264	*	*
WA		*	*	*	*	*
Oth Sts		49,848	212,590	79,384	3,106	17,245
US		53,083	1,155,447	546,955	5,895	51,108
Mature Birds						
Light		1,812	158,762	27,487	132	68,037
Heavy		532	43,731	1,524	34	6,393
US		2,344	202,493	29,011	166	74,430

See footnote(s) at end of table.

--continued

**Chickens Slaughtered: Number Condemned Post-Mortem by Cause, by Type,  
by State and United States, April 2006 (continued)**

	Bruises	Cadaver	Contam-ination	Overscald	Other	Total <sup>1</sup>
	<i>Number of Head</i>	<i>Number of Head</i>	<i>Number of Head</i>	<i>Number of Head</i>	<i>Number of Head</i>	<i>Number of Head</i>
Young Birds						
AL	2,541	11,658	14,708	8,916	148,558	347,506
AR	4,872	16,387	31,997	6,330	139,849	448,140
CA	*	*	*	*	*	*
DE	2,163	8,129	8,464	*	38,683	260,175
FL	*	*	*	*	*	*
GA	1,843	23,083	9,593	3,096	85,313	256,399
IN	*	*	*	*	*	*
KY	*	2,926	5,280	*	*	59,252
LA	308	2,309	2,143	*	3,759	36,020
MD	*	4,519	*	*	*	*
MS	1,629	4,674	4,677	*	106,562	242,739
MO	920	2,618	7,573	*	*	163,352
NJ	*	*	*	*	*	*
NY	*	*	*	*	*	*
NC	1,826	16,064	10,977	5,989	94,502	264,631
OH	*	437	*	*	*	14,342
PA	717	2,665	6,829	*	10,106	59,916
SC	583	*	*	2,453	*	60,837
TN	593	3,840	4,151	986	9,059	99,478
TX	637	2,993	6,982	*	37,194	158,150
VA	842	3,257	4,416	1,554	*	100,953
WA	*	*	*	*	*	*
Oth Sts	4,205	15,674	37,441	13,821	281,764	539,235
US	23,679	121,233	155,231	43,145	955,349	3,111,125
Mature Birds						
Light	10,916	3,192	88,959	1,973	66,191	427,461
Heavy	957	10,200	8,157	163	80,075	151,766
US	11,873	13,392	97,116	2,136	146,266	579,227

\* Included in "Other States" to avoid disclosing individual operations.

<sup>1</sup> The sum of the individual diseases does not add across to the total for "Other States".

**Chickens Slaughtered: Number Condemned Post-Mortem by Cause, by Type,  
by State and United States, May 2006**

State	Tuber- culosis	Leukosis	Septicemia	Airsac- culitis	Synovitis	Tumors
	<i>Number of Head</i>	<i>Number of Head</i>	<i>Number of Head</i>	<i>Number of Head</i>	<i>Number of Head</i>	<i>Number of Head</i>
Young Birds						
AL		236	99,985	51,728	1,055	4,961
AR		*	182,589	66,100	*	3,469
CA		*	*	*	*	*
DE		*	130,002	38,455	*	8,738
FL		*	*	*	*	*
GA		479	77,059	51,639	284	7,409
IN		*	*	*	*	*
KY		68	39,246	*	*	*
LA		*	21,373	6,519	85	537
MD		5,392	35,688	*	40	*
MS		*	64,061	38,829	417	929
MO		695	77,851	10,104	*	1,321
NJ		*	*	*	*	*
NY		*	*	*	*	*
NC		*	88,156	40,107	*	7,622
OH		*	6,706	*	*	70
PA		*	26,288	17,615	125	352
SC		90	10,208	*	10	*
TN		*	56,467	22,580	*	871
TX		*	62,684	27,665	164	1,338
VA		*	44,792	21,479	*	*
WA		*	*	*	*	*
Oth Sts		62,914	237,353	86,572	6,222	16,609
US		69,874	1,260,508	479,392	8,402	54,226
Mature Birds						
Light		1,399	161,484	28,312	76	76,805
Heavy		625	46,644	1,729	48	6,827
US		2,024	208,128	30,041	124	83,632

See footnote(s) at end of table.

--continued

**Chickens Slaughtered: Number Condemned Post-Mortem by Cause, by Type,  
by State and United States, May 2006 (continued)**

	Bruises	Cadaver	Contam-ination	Overscald	Other	Total <sup>1</sup>
	<i>Number of Head</i>	<i>Number of Head</i>	<i>Number of Head</i>	<i>Number of Head</i>	<i>Number of Head</i>	<i>Number of Head</i>
Young Birds						
AL	2,735	13,534	17,351	14,172	162,237	367,994
AR	5,559	18,218	35,672	5,832	108,708	430,312
CA	*	*	*	*	*	*
DE	2,515	7,688	9,516	3,989	38,383	292,556
FL	*	*	*	*	*	*
GA	2,268	21,518	11,191	7,661	89,599	269,107
IN	*	*	*	*	*	*
KY	*	3,102	6,005	839	*	85,331
LA	358	2,296	2,440	*	2,398	36,116
MD	*	4,659	*	390	*	*
MS	1,895	5,637	5,754	*	97,278	216,305
MO	1,253	2,329	8,218	371	*	156,146
NJ	*	*	*	*	*	*
NY	*	*	*	*	*	*
NC	1,865	16,285	11,018	8,012	111,488	285,215
OH	*	*	*	*	*	17,407
PA	896	3,147	7,089	*	10,107	70,970
SC	724	*	*	4,177	43,583	76,304
TN	600	4,552	4,312	1,125	7,006	97,951
TX	662	2,942	7,182	*	28,602	133,765
VA	896	3,778	6,515	3,732	23,831	110,334
WA	*	*	*	*	*	*
Oth Sts	5,096	18,393	41,162	15,406	222,368	566,708
US	27,322	128,078	173,425	65,706	945,588	3,212,521
Mature Birds						
Light	10,393	4,705	94,362	916	71,860	450,312
Heavy	947	9,051	7,594	369	88,807	162,641
US	11,340	13,756	101,956	1,285	160,667	612,953

\* Included in "Other States" to avoid disclosing individual operations.

<sup>1</sup> The sum of the individual diseases does not add across to the total for "Other States".

**Young Turkeys (Mature) Slaughtered: Number, Live Weight, and Average Live Weight, by State and United States, May 2006**

State	Number Slaughtered		Live Weight		Average Live Weight	
	April	May	April	May	April	May
	<i>1,000 Head</i>	<i>1,000 Head</i>	<i>1,000 Pounds</i>	<i>1,000 Pounds</i>	<i>Pounds</i>	<i>Pounds</i>
AR	2,478	2,812	49,102	56,048	19.82	19.93
MN	2,578	3,293	70,695	90,036	27.43	27.34
MO	1,395	1,501	45,359	49,198	32.52	32.78
Oth Sts	12,690	14,083	377,093	425,799	29.72	30.23
US	19,141	21,689	542,249	621,081	28.33	28.64

**Young Turkeys (Mature) Slaughtered: Pounds Certified and Post-Mortem Condemnations, by State and United States, May 2006**

State	Total Chilled and Frozen Pounds Certified <sup>1</sup>		Post-Mortem Condemnations			
			N.Y. Dressed Weight		Percent <sup>2</sup>	
	April	May	April	May	April	May
	<i>1,000 Pounds</i>	<i>1,000 Pounds</i>	<i>1,000 Pounds</i>	<i>1,000 Pounds</i>	<i>Percent</i>	<i>Percent</i>
AR	40,372	46,095	737	661	1.67	1.31
MN	56,441	72,056	1,338	1,659	2.10	2.05
MO	35,841	38,665	749	845	1.84	1.91
Oth Sts	297,676	335,986	5,254	5,771	1.55	1.51
US	430,330	492,802	8,078	8,936	1.66	1.60

<sup>1</sup> Ready-to-cook weights.

<sup>2</sup> Pounds condemned as percent of equivalent N.Y. dressed weight of quantity inspected.



**Turkeys Slaughtered: Number Condemned Post-Mortem by Cause, by Type,  
United States, April 2006**

State	Tuber- culosis	Leukosis	Septicemia	Airsac- culitis	Synovitis	Tumors
	<i>Number of Head</i>	<i>Number of Head</i>	<i>Number of Head</i>	<i>Number of Head</i>	<i>Number of Head</i>	<i>Number of Head</i>
Young (Mature) US		33	56,351	8,596	3,923	69
Old (Breeders) US		6	3,453	550	2	125
	Bruises	Cadaver	Contam- ination	Overscald	Other	Total
	<i>Number of Head</i>	<i>Number of Head</i>	<i>Number of Head</i>	<i>Number of Head</i>	<i>Number of Head</i>	<i>Number of Head</i>
Young (Mature) US	531	3,415	4,344	1,713	19,680	98,655
Old (Breeders) US	15	61	213	4	1,856	6,285

**Turkeys Slaughtered: Number Condemned Post-Mortem by Cause, by Type,  
United States, May 2006**

State	Tuber- culosis	Leukosis	Septicemia	Airsac- culitis	Synovitis	Tumors
	<i>Number of Head</i>	<i>Number of Head</i>	<i>Number of Head</i>	<i>Number of Head</i>	<i>Number of Head</i>	<i>Number of Head</i>
Young (Mature) US		68	61,280	9,720	3,638	107
Old (Breeders) US			2,873	258	10	80
	Bruises	Cadaver	Contam- ination	Overscald	Other	Total
	<i>Number of Head</i>	<i>Number of Head</i>	<i>Number of Head</i>	<i>Number of Head</i>	<i>Number of Head</i>	<i>Number of Head</i>
Young (Mature) US	553	4,835	4,087	2,835	24,975	112,098
Old (Breeders) US	41	70	78	32	183	3,625

## Poultry Slaughter Estimates

**Data Sources:** Data for poultry slaughter estimates are collected by inspectors of the Food Safety and Inspection Service (FSIS), USDA for all Federally Inspected (FI) plants. Over 99 percent of the total U.S. slaughter for any species is under FI. The number of head slaughtered daily, by species and class, as well as condemnations and total live and dressed weights are obtained by shift for each plant. Approximately 320 plants slaughtered poultry in the U.S. under Federal Inspection in 2005. Young chickens were killed in 35 states, young turkeys in 24 states.

**Revision Policy:** Revisions are generally the result of late reports received by FSIS from plants and are usually less than one-half of 1 percent of the preliminary totals. Revisions for the previous month and year-to-date totals are published in each monthly release. Final data are published in the annual summary released in February and reflect any late reports or corrections which occurred after the monthly revisions were published.

**Procedures and Reliability:** Plant inspectors submit data electronically for each shift a plant operates. An edit provides checks for the detection of errors such as invalid plant information, duplication, and erroneous data. Data are accumulated to monthly totals for this release.

Data for major slaughter plants with missing reports are adjusted prior to publication to assure that all plants slaughtering a significant portion of a specific class are accounted for. Estimates for missing shifts are made only after verifying that the plant was in operation. Adjustments are based on a shift determined to be similar to the one missing. Late reports replace imputed data as they become available. While there is a varying degree of incompleteness from month to month, it has only a minimal impact on the published totals.

Poultry slaughter estimates are based on a census of operating plants and, therefore, have no sampling error. However, they may be subject to errors such as omissions, duplications, and mistakes in reporting, recording, and processing the data. These errors are minimized through strict quality controls in the edit and summarization process, and a careful review of all reported data for consistency and reasonableness.

State data are published for selected states for young chickens and young turkeys. State data are not published if less than three plants operate for a species in a State, or if one plant has 60 percent or more of the total live weight for that species. Data for all states not published are included in the "Other States" category. Also included in this category are data for published states that are confidential (denoted by an \*). Data for all states are included in the U.S. totals.

## Definitions

**Ante-Mortem Condemnations** - Birds condemned prior to their entry into the slaughter plant.

**Certified Ready-to-Cook** - The weight of poultry certified wholesome by inspection after post-mortem condemnation pounds are removed. Ready-to-cook represents poultry meat ready for the marketing channel.

**Ducks** - Includes all ducks regardless of age and weight.

**Fryer-Roaster Turkeys** - Young immature birds, usually under 16 weeks of age. Included with young turkeys.

**Mature Chickens** - Fowl from breeder and market egg flocks and stags and cocks.

**New York Dressed Weight** - Carcass weight after only feathers and blood are removed. This weight is approximately 90% of live weight.

**Old Turkeys (Breeders)** - Fully matured birds held for egg production, usually over 15 months of age.

**Other Poultry** - Includes all other ready-to-cook products which bear the USDA Inspected for Wholesomeness legend.

**Post-Mortem Condemnations** - Carcasses or parts condemned by the inspector because of disease or mishandling and removed from the slaughter line and destroyed.

**Young Chickens** - Commercially grown broilers-fryers and other young immature birds such as roasters and capons.

**Young Turkeys (Mature)** - Young birds grown to a matured market age, about 5 months.

## Information Contacts

Listed below are the commodity specialists in the Livestock Branch of the National Agricultural Statistics Service to contact for additional information.

Dan Kerestes, Chief, Livestock Branch .....	(202) 720-3570
Darin Jantzi, Head, Poultry and Specialty Commodities Section .....	(202) 720-3570
David Colwell - Cold Storage .....	(202) 720-8784
Fleming Gibson - Egg Products, Poultry Slaughter, Catfish Processing, Mink .....	(202) 690-3237
John Lange - Turkeys Raised, Turkey Hatchery, Catfish Production, Trout Production, Census of Aquaculture .....	(202) 720-0585
Sharyn Lavender - Layers, Eggs .....	(202) 720-3244
Jody Roberts - Broiler Hatchery, Chicken Hatchery, Honey .....	(202) 690-8632

## ACCESS TO REPORTS!!

---

For your convenience, there are several ways to obtain NASS reports, data products, and services:

### INTERNET ACCESS

All NASS reports are available free of charge on the worldwide Internet. For access, connect to the Internet and go to the NASS Home Page at: [www.nass.usda.gov](http://www.nass.usda.gov).

### E-MAIL SUBSCRIPTION

All NASS reports are available by subscription free of charge direct to your e-mail address. Starting with the NASS Home Page at [www.nass.usda.gov](http://www.nass.usda.gov), under the right navigation, *Receive reports by Email*, click on **National** or **State**. Follow the instructions on the screen.

-----

### PRINTED REPORTS OR DATA PRODUCTS

**CALL OUR TOLL-FREE ORDER DESK: 800-999-6779 (U.S. and Canada)**  
**Other areas, please call 703-605-6220      FAX: 703-605-6900**  
**(Visa, MasterCard, check, or money order acceptable for payment.)**

-----

### ASSISTANCE

For **assistance** with general agricultural statistics or further information about NASS or its products or services, contact the **Agricultural Statistics Hotline** at **800-727-9540**, 7:30 a.m. to 4:00 p.m. ET, or e-mail: [nass@nass.usda.gov](mailto:nass@nass.usda.gov).

The U.S. Department of Agriculture (USDA) prohibits discrimination in all its programs and activities on the basis of race, color, national origin, age, disability, and where applicable, sex, marital status, familial status, parental status, religion, sexual orientation, genetic information, political beliefs, reprisal, or because all or part of an individual's income is derived from any public assistance program. (Not all prohibited bases apply to all programs.) Persons with disabilities who require alternative means for communication of program information (Braille, large print, audiotape, etc.) should contact USDA's TARGET Center at (202) 720-2600 (voice and TDD).

To file a complaint of discrimination, write to USDA, Director, Office of Civil Rights, 1400 Independence Avenue, S.W., Washington, D.C. 20250-9410, or call (800) 795-3272 (voice) or (202) 720-6382 (TDD). USDA is an equal opportunity provider and employer.