



Prospective Plantings

ISSN: 1949-159X

Released March 31, 2010, by the National Agricultural Statistics Service (NASS), Agricultural Statistics Board, United States Department of Agriculture (USDA).

Special Note

NASS is in the process of modifying report layouts in order to improve readability. This is the first issue produced using the new layout. This report issue is published using both layouts but future issues will only be produced using this layout. The previous layout is available on the NASS website: www.nass.usda.gov.

Corn Planted Acreage Up 3 Percent from 2009 Soybean Acreage Up Less Than 1 Percent All Wheat Acreage Down 9 Percent All Cotton Acreage Up 15 Percent

Corn growers intend to plant 88.8 million acres of corn for all purposes in 2010, up 3 percent from both last year and 2008. Expected acreage is up in many States due to reduced winter wheat acreage and expectations of improved net returns. Acreage increases of 300,000 or more are expected in Illinois, Kansas, Missouri, and Ohio. The largest decreases are expected in Iowa, down 200,000 acres, and Texas, down 150,000 acres.

Soybean producers intend to plant 78.1 million acres in 2010, up less than 1 percent from last year. If realized, the United States planted area will be the largest on record. Acreage increases of 100,000 or more are expected in Illinois, Iowa, Kansas, Nebraska, North Dakota, and South Dakota. The largest decreases are expected in Georgia and North Carolina, both 150,000 acres less than 2009. If intentions are realized, the planted acreage in Kansas, North Dakota, and Pennsylvania will be the largest on record.

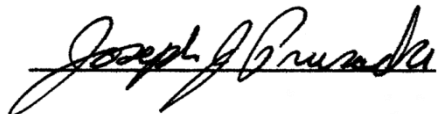
All wheat planted area is estimated at 53.8 million acres, down 9 percent from 2009. The 2010 winter wheat planted area, at 37.7 million acres, is 13 percent below last year but up 2 percent from the previous estimate. Of this total, about 28.3 million acres are Hard Red Winter, 6.0 million acres are Soft Red Winter, and 3.4 million acres are White Winter. Area planted to other spring wheat for 2010 is estimated at 13.9 million acres, up 5 percent from 2009. Of this total, about 13.3 million acres are Hard Red Spring wheat. Durum planted area for 2010 is estimated at 2.22 million acres, down 13 percent from the previous year.

All cotton plantings for 2010 are expected to total 10.5 million acres, 15 percent above last year. Upland acreage is expected to total 10.3 million acres, up 15 percent. Growers intend to increase planted area in all States except Arkansas, Kansas, and Louisiana. The largest acreage increase is in Texas where producers intend to plant 600,000 acres more acres of upland cotton than in 2009. American-Pima cotton growers intend to increase their plantings by 34 percent from 2009 to 190,000 acres. California producers intend to plant 165,000 acres, up 39 percent from last year.

This report was approved on March 31, 2010.



Acting Secretary of
Agriculture
Michael T. Scuse



Agricultural Statistics Board
Acting Chairperson
Joseph J. Prusacki

Contents

Corn Area Planted - States and United States: 2008-2010	6
United States Corn and Soybean Planted Acreage Map	7
Sorghum Area Planted - States and United States: 2008-2010.....	7
Oat Area Planted - States and United States: 2008-2010.....	8
Barley Area Planted - States and United States: 2008-2010.....	9
All Wheat Area Planted - States and United States: 2008-2010.....	10
Winter Wheat Planted - States and United States: 2008-2010.....	11
Durum Wheat Area Planted - States and United States: 2008-2010.....	12
Other Spring Wheat Planted - States and United States: 2008-2010.....	12
All Hay Area Harvested - States and United States: 2008-2010.....	13
Rice Area Planted by Class - States and United States: 2008-2010.....	14
Canola Area Planted - States and United States: 2008-2010	14
Soybean Area Planted - States and United States: 2008-2010.....	15
Peanut Area Planted - States and United States: 2008-2010.....	15
Sunflower Area Planted by Type - States and United States: 2008-2010.....	16
Flaxseed Area Planted - States and United States: 2008-2010	16
Cotton Area Planted by Type - States and United States: 2008-2010	17
Sugarbeet Area Planted - States and United States: 2008-2010.....	18
Tobacco Area Harvested - States and United States: 2008-2010.....	18
Tobacco Area Harvested by Class and Type - States and United States: 2008-2010.....	19
Dry Edible Bean Area Planted - States and United States: 2008-2010.....	20
Chickpea (Garbanzo Beans) Area Planted - States and United States: 2008-2010.....	21
Lentil Area Planted - States and United States: 2008-2010.....	22
Dry Edible Pea Area Planted - States and United States: 2008-2010.....	22
Austrian Winter Pea Area Planted - States and United States: 2008-2010.....	22
Sweet Potato Area Planted - States and United States: 2008-2010.....	23

Crop Area Planted and Harvested - United States: 2009 and 2010 (Domestic Units)	24
Crop Yield and Production - United States: 2009 and 2010 (Domestic Units).....	25
Crop Area Planted and Harvested - United States: 2009 and 2010 (Metric Units).....	26
Crop Yield and Production - United States: 2009 and 2010 (Metric Units)	27
Winter Weather Summary	28
Crop Comments	29
Statistical Methodology.....	34
Reliability of Prospective Plantings Planted Acreage Estimates	35
Information Contacts.....	36

This page intentionally left blank.

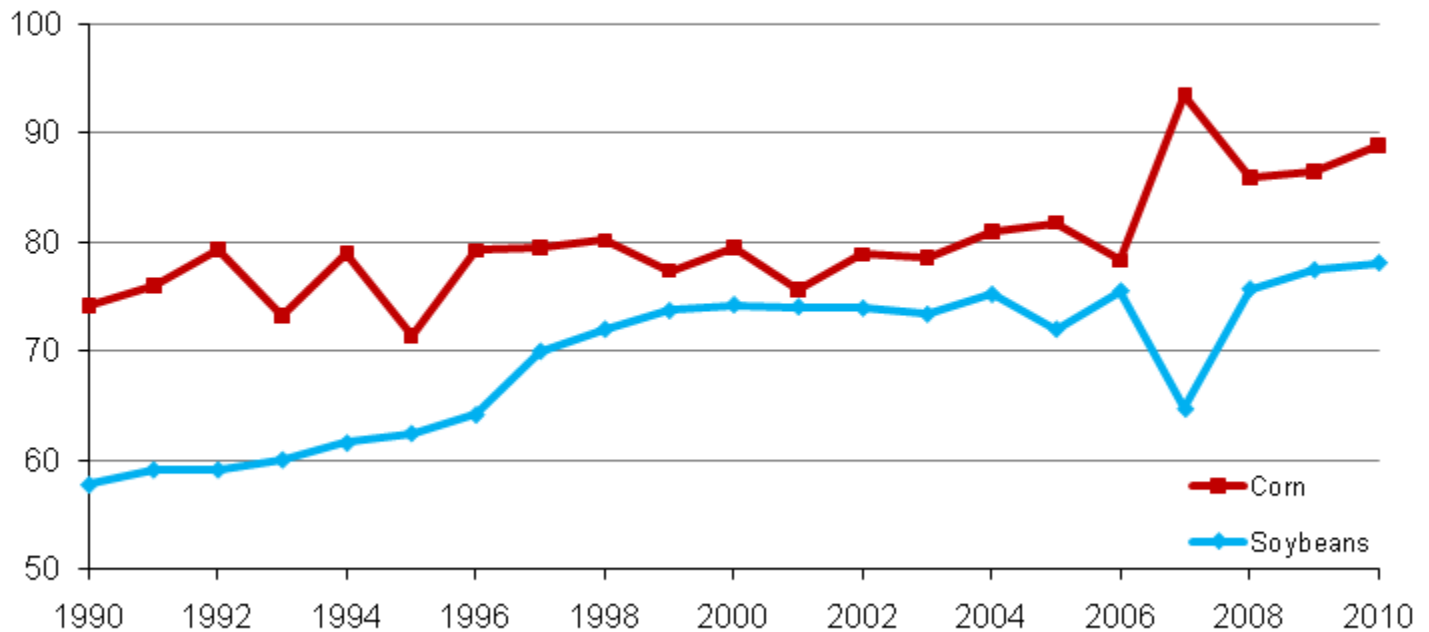
Corn Area Planted - States and United States: 2008-2010

State	Area planted			
	2008 (1,000 acres)	2009 (1,000 acres)	2010 ¹ (1,000 acres)	2010/2009 (percent)
Alabama	260	280	250	89
Arizona	50	50	55	110
Arkansas	440	430	410	95
California	670	550	650	118
Colorado	1,250	1,100	1,350	123
Connecticut	27	26	27	104
Delaware	160	170	185	109
Florida	70	70	65	93
Georgia	370	420	380	90
Idaho	300	300	300	100
Illinois	12,100	12,000	12,600	105
Indiana	5,700	5,600	5,700	102
Iowa	13,300	13,700	13,500	99
Kansas	3,850	4,100	4,700	115
Kentucky	1,210	1,220	1,320	108
Louisiana	520	630	530	84
Maine	29	28	30	107
Maryland	460	470	490	104
Massachusetts	19	17	19	112
Michigan	2,400	2,350	2,400	102
Minnesota	7,700	7,600	7,600	100
Mississippi	720	730	800	110
Missouri	2,800	3,000	3,300	110
Montana	78	72	80	111
Nebraska	8,800	9,150	9,200	101
Nevada	5	4	4	100
New Hampshire	15	15	15	100
New Jersey	85	80	80	100
New Mexico	140	130	120	92
New York	1,090	1,070	1,080	101
North Carolina	900	870	870	100
North Dakota	2,550	1,950	2,100	108
Ohio	3,300	3,350	3,700	110
Oklahoma	370	390	330	85
Oregon	60	60	65	108
Pennsylvania	1,350	1,350	1,350	100
Rhode Island	2	2	2	100
South Carolina	355	335	340	101
South Dakota	4,750	5,000	5,000	100
Tennessee	690	670	710	106
Texas	2,300	2,350	2,200	94
Utah	70	65	65	100
Vermont	94	91	97	107
Virginia	470	480	480	100
Washington	165	170	205	121
West Virginia	43	47	49	104
Wisconsin	3,800	3,850	3,900	101
Wyoming	95	90	95	106
United States	85,982	86,482	88,798	103

¹ Intended plantings in 2010 as indicated by reports from farmers.

United States Corn and Soybean Planted Acreage

Million acres



Sorghum Area Planted - States and United States: 2008-2010

State	Area planted			
	2008 (1,000 acres)	2009 (1,000 acres)	2010 ¹ (1,000 acres)	2010/2009 (percent)
Alabama ²	12	(NA)	(NA)	(X)
Arizona	57	35	30	86
Arkansas	125	40	40	100
California ²	47	(NA)	(NA)	(X)
Colorado	230	180	200	111
Georgia	60	55	50	91
Illinois	80	40	40	100
Kansas	2,900	2,700	2,700	100
Kentucky ²	13	(NA)	(NA)	(X)
Louisiana	120	70	100	143
Mississippi	85	13	15	115
Missouri	90	50	40	80
Nebraska	300	235	210	89
New Mexico	130	85	85	100
North Carolina ²	16	(NA)	(NA)	(X)
Oklahoma	350	250	250	100
Pennsylvania ²	11	(NA)	(NA)	(X)
South Carolina ²	12	(NA)	(NA)	(X)
South Dakota	170	180	200	111
Tennessee ²	26	(NA)	(NA)	(X)
Texas	3,450	2,700	2,400	89
United States	8,284	6,633	6,360	96

(NA) Not available.

(X) Not applicable.

¹ Intended plantings in 2010 as indicated by reports from farmers.

² Estimates discontinued in 2009.

Oat Area Planted - States and United States: 2008-2010

[Includes area planted in preceding fall]

State	Area planted			
	2008 (1,000 acres)	2009 (1,000 acres)	2010 ¹ (1,000 acres)	2010/2009 (percent)
Alabama	50	50	35	70
Arkansas ²	(NA)	10	10	100
California	260	250	240	96
Colorado	45	60	45	75
Georgia	65	60	45	75
Idaho	70	80	70	88
Illinois	45	40	40	100
Indiana	15	15	20	133
Iowa	150	200	195	98
Kansas	60	85	90	106
Maine	32	32	33	103
Michigan	75	70	65	93
Minnesota	250	250	275	110
Missouri	15	15	20	133
Montana	60	70	60	86
Nebraska	95	100	100	100
New York	80	90	80	89
North Carolina	60	50	40	80
North Dakota	320	350	320	91
Ohio	75	65	60	92
Oklahoma	50	50	50	100
Oregon	45	45	35	78
Pennsylvania	105	110	115	105
South Carolina	33	30	25	83
South Dakota	220	200	210	105
Texas	600	600	650	108
Utah	40	45	45	100
Virginia	12	12	16	133
Washington	20	20	15	75
Wisconsin	270	310	320	103
Wyoming	30	40	40	100
United States	3,247	3,404	3,364	99

(NA) Not available.

¹ Intended plantings in 2010 as indicated by reports from farmers.

² Estimates began in 2009.

Barley Area Planted - States and United States: 2008-2010

[Includes area planted in preceding fall]

State	Area planted			
	2008 (1,000 acres)	2009 (1,000 acres)	2010 ¹ (1,000 acres)	2010/2009 (percent)
Arizona	42	48	45	94
California	95	90	100	111
Colorado	80	78	73	94
Delaware	25	28	20	71
Idaho	600	530	530	100
Kansas	17	14	12	86
Kentucky ²	8	(NA)	(NA)	(X)
Maine	20	16	16	100
Maryland	45	55	45	82
Michigan	12	13	14	108
Minnesota	125	95	115	121
Montana	860	870	790	91
Nevada ²	3	(NA)	(NA)	(X)
New Jersey ²	3	(NA)	(NA)	(X)
New York	13	12	13	108
North Carolina	21	23	23	100
North Dakota	1,650	1,210	980	81
Ohio ²	6	(NA)	(NA)	(X)
Oregon	57	40	45	113
Pennsylvania	60	60	60	100
South Dakota	63	48	35	73
Utah	40	40	37	93
Virginia	63	67	105	157
Washington	205	105	95	90
Wisconsin	43	45	50	111
Wyoming	90	80	70	88
United States	4,246	3,567	3,273	92

(NA) Not available.

(X) Not applicable.

¹ Intended plantings in 2010 as indicated by reports from farmers.

² Estimates discontinued in 2009.

All Wheat Area Planted - States and United States: 2008-2010

[Includes area planted in preceding fall]

State	Area planted			
	2008 (1,000 acres)	2009 (1,000 acres)	2010 ¹ (1,000 acres)	2010/2009 (percent)
Alabama	240	220	210	95
Arizona	159	132	87	66
Arkansas	1,070	430	210	49
California	840	770	715	93
Colorado	2,190	2,630	2,485	94
Delaware	80	70	55	79
Florida	25	17	16	94
Georgia	480	340	200	59
Idaho	1,400	1,310	1,380	105
Illinois	1,200	850	350	41
Indiana	580	470	300	64
Iowa	40	28	15	54
Kansas	9,600	9,300	8,600	92
Kentucky	580	510	450	88
Louisiana	400	185	150	81
Maryland	255	230	210	91
Michigan	730	620	500	81
Minnesota	1,925	1,655	1,570	95
Mississippi	520	180	150	83
Missouri	1,250	780	390	50
Montana	5,740	5,520	5,350	97
Nebraska	1,750	1,700	1,600	94
Nevada	21	20	22	110
New Jersey	35	34	32	94
New Mexico	430	450	480	107
New York	130	115	110	96
North Carolina	820	700	550	79
North Dakota	9,230	8,680	8,540	98
Ohio	1,120	1,010	800	79
Oklahoma	5,600	5,700	5,200	91
Oregon	960	890	965	108
Pennsylvania	195	190	170	89
South Carolina	220	165	140	85
South Dakota	3,661	3,209	2,858	89
Tennessee	620	430	290	67
Texas	5,800	6,400	5,600	88
Utah	150	154	150	97
Virginia	310	250	220	88
Washington	2,290	2,290	2,290	100
West Virginia	11	9	7	78
Wisconsin	373	335	250	75
Wyoming	163	155	160	103
United States	63,193	59,133	53,827	91

¹ Intended plantings for 2010 as indicated by reports from farmers.

Winter Wheat Area Planted - States and United States: 2008-2010

[Includes area planted in preceding fall]

State	Area planted			
	2008 (1,000 acres)	2009 (1,000 acres)	2010 (1,000 acres)	2010/2009 (percent)
Alabama	240	220	210	95
Arizona	9	7	7	100
Arkansas	1,070	430	210	49
California	680	590	600	102
Colorado	2,150	2,600	2,450	94
Delaware	80	70	55	79
Florida	25	17	16	94
Georgia	480	340	200	59
Idaho	850	740	780	105
Illinois	1,200	850	350	41
Indiana	580	470	300	64
Iowa	40	28	15	54
Kansas	9,600	9,300	8,600	92
Kentucky	580	510	450	88
Louisiana	400	185	150	81
Maryland	255	230	210	91
Michigan	730	620	500	81
Minnesota	75	55	70	127
Mississippi	520	180	150	83
Missouri	1,250	780	390	50
Montana	2,600	2,550	2,050	80
Nebraska	1,750	1,700	1,600	94
Nevada	12	16	16	100
New Jersey	35	34	32	94
New Mexico	430	450	480	107
New York	130	115	110	96
North Carolina	820	700	550	79
North Dakota	630	580	340	59
Ohio	1,120	1,010	800	79
Oklahoma	5,600	5,700	5,200	91
Oregon	780	760	840	111
Pennsylvania	195	190	170	89
South Carolina	220	165	140	85
South Dakota	2,050	1,700	1,250	74
Tennessee	620	430	290	67
Texas	5,800	6,400	5,600	88
Utah	130	140	130	93
Virginia	310	250	220	88
Washington	1,750	1,700	1,750	103
West Virginia	11	9	7	78
Wisconsin	350	335	250	75
Wyoming	150	155	160	103
United States	46,307	43,311	37,698	87

Durum Wheat Area Planted - States and United States: 2008-2010

[Includes area planted in preceding fall in Arizona and California]

State	Area planted			
	2008 (1,000 acres)	2009 (1,000 acres)	2010 ¹ (1,000 acres)	2010/2009 (percent)
Arizona	150	125	80	64
California	160	180	115	64
Idaho	10	20	20	100
Montana	590	570	500	88
North Dakota	1,800	1,650	1,500	91
South Dakota	11	9	8	89
United States	2,721	2,554	2,223	87

¹ Intended plantings in 2010 as indicated by reports from farmers.

Other Spring Wheat Area Planted - States and United States: 2008-2010

State	Area planted			
	2008 (1,000 acres)	2009 (1,000 acres)	2010 ¹ (1,000 acres)	2010/2009 (percent)
Colorado	40	30	35	117
Idaho	540	550	580	105
Minnesota	1,850	1,600	1,500	94
Montana	2,550	2,400	2,800	117
Nevada	9	4	6	150
North Dakota	6,800	6,450	6,700	104
Oregon	180	130	125	96
South Dakota	1,600	1,500	1,600	107
Utah	20	14	20	143
Washington	540	590	540	92
Wisconsin ²	23	(NA)	(NA)	(X)
Wyoming ²	13	(NA)	(NA)	(X)
United States	14,165	13,268	13,906	105

(NA) Not available.

(X) Not applicable.

¹ Intended plantings in 2010 as indicated by reports from farmers.

² Estimates discontinued in 2009.

All Hay Area Harvested - State and United States: 2008-2010

State	Area harvested			
	2008 (1,000 acres)	2009 (1,000 acres)	2010 ¹ (1,000 acres)	2010/2009 (percent)
Alabama	900	800	800	100
Arizona	295	310	320	103
Arkansas	1,405	1,415	1,450	102
California	1,610	1,520	1,500	99
Colorado	1,570	1,600	1,630	102
Connecticut	55	62	65	105
Delaware	18	17	18	106
Florida	300	300	300	100
Georgia	720	700	780	111
Idaho	1,410	1,510	1,480	98
Illinois	620	610	610	100
Indiana	590	620	610	98
Iowa	1,550	1,220	1,250	102
Kansas	2,750	2,550	2,700	106
Kentucky	2,640	2,520	2,450	97
Louisiana	430	380	440	116
Maine	138	149	150	101
Maryland	205	210	215	102
Massachusetts	73	81	80	99
Michigan	1,020	990	1,000	101
Minnesota	1,950	2,050	2,000	98
Mississippi	720	700	700	100
Missouri	4,200	3,880	4,100	106
Montana	2,400	2,500	2,400	96
Nebraska	2,570	2,700	2,650	98
Nevada	455	490	500	102
New Hampshire	53	57	60	105
New Jersey	115	110	110	100
New Mexico	340	320	340	106
New York	1,320	1,360	1,350	99
North Carolina	808	847	860	102
North Dakota	3,220	2,960	2,950	100
Ohio	1,140	1,040	1,150	111
Oklahoma	2,910	3,220	3,250	101
Oregon	1,025	1,030	1,000	97
Pennsylvania	1,750	1,550	1,500	97
Rhode Island	7	7	7	100
South Carolina	330	350	360	103
South Dakota	3,850	3,800	3,800	100
Tennessee	1,870	1,915	1,900	99
Texas	4,430	4,620	4,800	104
Utah	695	690	700	101
Vermont	180	190	200	105
Virginia	1,270	1,180	1,170	99
Washington	710	810	800	99
West Virginia	605	625	635	102
Wisconsin	1,900	1,920	2,050	107
Wyoming	1,030	1,270	1,270	100
United States	60,152	59,755	60,460	101

¹ Intended area harvested in 2010 as indicated by reports from farmers.

Rice Area Planted by Class - States and United States: 2008-2010

Class and State	Area planted			
	2008 (1,000 acres)	2009 (1,000 acres)	2010 ¹ (1,000 acres)	2010/2009 (percent)
Long grain				
Arkansas	1,300	1,260	1,430	113
California	9	5	10	200
Louisiana	455	415	470	113
Mississippi	230	245	270	110
Missouri	198	199	215	108
Texas	173	166	180	108
United States	2,365	2,290	2,575	112
Medium grain				
Arkansas	100	225	200	89
California	460	505	540	107
Louisiana	15	55	40	73
Missouri	2	3	2	67
Texas	2	5	3	60
United States	579	793	785	99
Short grain				
Arkansas	1	1	1	100
California ²	50	51	50	98
United States	51	52	51	98
All				
Arkansas	1,401	1,486	1,631	110
California	519	561	600	107
Louisiana	470	470	510	109
Mississippi	230	245	270	110
Missouri	200	202	217	107
Texas	175	171	183	107
United States	2,995	3,135	3,411	109

¹ Intended plantings in 2010 as indicated by reports from farmers.

² Includes sweet rice.

Canola Area Planted - States and United States: 2008-2010

State	Area planted			
	2008 (1,000 acres)	2009 (1,000 acres)	2010 ¹ (1,000 acres)	2010/2009 (percent)
Idaho ²	(D)	15.0	18.0	120
Minnesota	23.0	13.0	31.0	238
Montana	7.5	6.5	18.0	277
North Dakota	910.0	730.0	1,060.0	145
Oklahoma ²	(D)	42.0	80.0	190
Oregon ²	(D)	4.9	5.5	112
Other States ³	70.5	15.6	15.6	100
United States	1,011.0	827.0	1,228.1	149

(D) Withheld to avoid disclosing data for individual operations.

¹ Intended plantings in 2010 as indicated by reports from farmers.

² Beginning in 2009, Idaho, Oklahoma, and Oregon are published individually.

³ For 2008, Other States include Colorado, Idaho, Kansas, Michigan, Oklahoma, Oregon, and Washington. Beginning in 2009, Other States include Colorado, Kansas, and Washington. 2010 estimates carried forward from 2009. First 2010 estimate will be published in "Acreage" on June 30, 2010.

Soybean Area Planted - States and United States: 2008-2010

State	Area planted			
	2008	2009	2010 ¹	2010/2009
	(1,000 acres)	(1,000 acres)	(1,000 acres)	(percent)
Alabama	360	440	350	80
Arkansas	3,300	3,420	3,300	96
Delaware	195	185	185	100
Florida	32	37	35	95
Georgia	430	470	320	68
Illinois	9,200	9,400	9,500	101
Indiana	5,450	5,450	5,500	101
Iowa	9,750	9,600	9,900	103
Kansas	3,300	3,700	4,100	111
Kentucky	1,390	1,430	1,370	96
Louisiana	1,050	1,020	1,010	99
Maryland	495	485	495	102
Michigan	1,900	2,000	2,050	103
Minnesota	7,050	7,200	7,200	100
Mississippi	2,000	2,160	2,160	100
Missouri	5,200	5,350	5,400	101
Nebraska	4,900	4,800	4,900	102
New Jersey	92	89	90	101
New York	230	255	250	98
North Carolina	1,690	1,800	1,650	92
North Dakota	3,800	3,900	4,000	103
Ohio	4,500	4,550	4,600	101
Oklahoma	400	405	460	114
Pennsylvania	435	450	465	103
South Carolina	540	590	560	95
South Dakota	4,100	4,250	4,400	104
Tennessee	1,490	1,570	1,430	91
Texas	230	215	250	116
Virginia	580	580	600	103
West Virginia	19	20	18	90
Wisconsin	1,610	1,630	1,550	95
United States	75,718	77,451	78,098	101

¹ Intended plantings in 2010 as indicated by reports from farmers.

Peanut Area Planted - States and United States: 2008-2010

State	Area planted			
	2008	2009	2010 ¹	2010/2009
	(1,000 acres)	(1,000 acres)	(1,000 acres)	(percent)
Alabama	195.0	155.0	170.0	110
Florida	150.0	115.0	120.0	104
Georgia	690.0	510.0	540.0	106
Mississippi	22.0	21.0	25.0	119
New Mexico	8.0	7.0	8.0	114
North Carolina	98.0	67.0	80.0	119
Oklahoma	19.0	14.0	13.0	93
South Carolina	71.0	50.0	70.0	140
Texas	257.0	165.0	155.0	94
Virginia	24.0	12.0	20.0	167
United States	1,534.0	1,116.0	1,201.0	108

¹ Intended plantings in 2010 as indicated by reports from farmers.

Sunflower Area Planted by Type - States and United States: 2008-2010

Varietal type and State	Area planted			
	2008 (1,000 acres)	2009 (1,000 acres)	2010 ¹ (1,000 acres)	2010/2009 (percent)
Oil				
California ²	(D)	34.0	30.0	88
Colorado	170.0	70.0	110.0	157
Kansas	220.0	150.0	130.0	87
Minnesota	75.0	45.0	46.0	102
Nebraska	45.0	27.0	30.0	111
North Dakota	960.0	770.0	800.0	104
Oklahoma ²	(D)	13.0	13.0	100
South Dakota	550.0	520.0	510.0	98
Texas	65.0	69.0	45.0	65
Other States ³	78.0	(X)	(X)	(X)
United States	2,163.0	1,698.0	1,714.0	101
Non-Oil				
California ²	(D)	8.0	13.0	163
Colorado	24.0	21.0	35.0	167
Kansas	21.0	18.0	25.0	139
Minnesota	40.0	26.0	28.0	108
Nebraska	19.0	25.0	40.0	160
North Dakota	155.0	115.0	175.0	152
Oklahoma ²	(D)	3.0	1.0	33
South Dakota	50.0	50.0	95.0	190
Texas	36.0	66.0	55.0	83
Other States ³	8.5	(X)	(X)	(X)
United States	353.5	332.0	467.0	141
All				
California ²	(D)	42.0	43.0	102
Colorado	194.0	91.0	145.0	159
Kansas	241.0	168.0	155.0	92
Minnesota	115.0	71.0	74.0	104
Nebraska	64.0	52.0	70.0	135
North Dakota	1,115.0	885.0	975.0	110
Oklahoma ²	(D)	16.0	14.0	88
South Dakota	600.0	570.0	605.0	106
Texas	101.0	135.0	100.0	74
Other States ³	86.5	(X)	(X)	(X)
United States	2,516.5	2,030.0	2,181.0	107

(D) Withheld to avoid disclosing data for individual operations.

(X) Not applicable.

¹ Intended plantings in 2010 as indicated by reports from farmers.

² Beginning in 2009, California and Oklahoma are published individually.

³ For 2008, Other States include California, Illinois, Michigan, Missouri, Montana, Oklahoma, Wisconsin, and Wyoming. Beginning in 2009, Other States is discontinued.

Flaxseed Area Planted - States and United States: 2008-2010

State	Area planted			
	2008 (1,000 acres)	2009 (1,000 acres)	2010 ¹ (1,000 acres)	2010/2009 (percent)
Minnesota	3	3	4	133
Montana	9	11	13	118
North Dakota	335	295	395	134
South Dakota	7	8	8	100
United States	354	317	420	132

¹ Intended plantings in 2010 as indicated by reports from farmers.

Cotton Area Planted by Type - States and United States: 2008-2010

Type and State	Area planted			
	2008 (1,000 acres)	2009 (1,000 acres)	2010 ¹ (1,000 acres)	2010/2009 (percent)
Upland				
Alabama	290.0	255.0	360.0	141
Arizona	135.0	145.0	185.0	128
Arkansas	620.0	520.0	520.0	100
California	120.0	71.0	100.0	141
Florida	67.0	82.0	90.0	110
Georgia	940.0	1,000.0	1,150.0	115
Kansas	35.0	38.0	35.0	92
Louisiana	300.0	230.0	200.0	87
Mississippi	365.0	305.0	340.0	111
Missouri	306.0	272.0	290.0	107
New Mexico	38.0	30.5	35.0	115
North Carolina	430.0	375.0	540.0	144
Oklahoma	170.0	205.0	240.0	117
South Carolina	135.0	115.0	175.0	152
Tennessee	285.0	300.0	380.0	127
Texas	5,000.0	5,000.0	5,600.0	112
Virginia	61.0	64.0	75.0	117
United States	9,297.0	9,007.5	10,315.0	115
American Pima				
Arizona	0.8	1.7	3.0	176
California	155.0	119.0	165.0	139
New Mexico	2.6	3.0	4.0	133
Texas	15.6	18.0	18.0	100
United States	174.0	141.7	190.0	134
All				
Alabama	290.0	255.0	360.0	141
Arizona	135.8	146.7	188.0	128
Arkansas	620.0	520.0	520.0	100
California	275.0	190.0	265.0	139
Florida	67.0	82.0	90.0	110
Georgia	940.0	1,000.0	1,150.0	115
Kansas	35.0	38.0	35.0	92
Louisiana	300.0	230.0	200.0	87
Mississippi	365.0	305.0	340.0	111
Missouri	306.0	272.0	290.0	107
New Mexico	40.6	33.5	39.0	116
North Carolina	430.0	375.0	540.0	144
Oklahoma	170.0	205.0	240.0	117
South Carolina	135.0	115.0	175.0	152
Tennessee	285.0	300.0	380.0	127
Texas	5,015.6	5,018.0	5,618.0	112
Virginia	61.0	64.0	75.0	117
United States	9,471.0	9,149.2	10,505.0	115

¹ Intended plantings in 2010 as indicated by reports from farmers.

Sugarbeet Area Planted - States and United States: 2008-2010

[Relates to year of intended harvest in all States except California]

State	Area planted			
	2008	2009	2010 ¹	2010/2009
	(1,000 acres)	(1,000 acres)	(1,000 acres)	(percent)
California ²	26.0	25.1	25.0	100
Colorado	33.8	35.1	29.8	85
Idaho	131.0	164.0	169.0	103
Michigan	137.0	138.0	147.0	107
Minnesota	440.0	463.0	445.0	96
Montana	31.7	38.4	42.4	110
Nebraska	45.2	53.0	46.0	87
North Dakota	208.0	225.0	227.0	101
Oregon	6.7	10.6	11.0	104
Washington ³	1.6	(NA)	(NA)	(X)
Wyoming	29.7	31.0	32.0	103
United States	1,090.7	1,183.2	1,174.2	99

(NA) Not available.

(X) Not applicable.

¹ Intended plantings in 2010 as indicated by reports from processors.

² Relates to year of intended harvest for fall planted beets in central California and to year of planting for overwintered beets in central and southern California.

³ Estimates discontinued in 2009.

Tobacco Area Harvested - States and United States: 2008-2010

State	Area harvested			
	2008	2009	2010 ¹	2010/2009
	(acres)	(acres)	(acres)	(percent)
Connecticut	2,600	1,800	(D)	(X)
Georgia	16,000	14,000	10,000	71
Kentucky	87,800	88,700	83,500	94
Massachusetts	690	390	(D)	(X)
Missouri ²	1,500	(NA)	(NA)	(X)
North Carolina	174,300	177,400	167,600	94
Ohio	3,400	3,400	2,900	85
Pennsylvania	7,900	8,200	8,500	104
South Carolina	19,000	18,500	17,000	92
Tennessee	21,800	21,600	22,300	103
Virginia	19,500	20,150	18,750	93
Other States ³	(X)	(X)	3,470	(X)
United States	354,490	354,140	334,020	94

(D) Withheld to avoid disclosing data for individual operations.

(NA) Not available.

(X) Not applicable.

¹ Intended area harvested in 2010 as indicated by reports from farmers.

² Estimates discontinued in 2009.

³ For 2010, Other States include Connecticut and Massachusetts.

Tobacco Area Harvested by Class and Type - States and United States: 2008-2010

Class and type	Area harvested			
	2008 (acres)	2009 (acres)	2010 ¹ (acres)	2010/2009 (percent)
Class 1, Flue-cured (11-14)				
Georgia	16,000	14,000	10,000	71
North Carolina	171,000	174,000	164,000	94
South Carolina	19,000	18,500	17,000	92
Virginia	17,000	17,500	16,000	91
United States	223,000	224,000	207,000	92
Class 2, Fire-cured (21-23)				
Kentucky	10,900	9,100	9,000	99
Tennessee	7,200	6,400	6,000	94
Virginia	500	650	650	100
United States	18,600	16,150	15,650	97
Class 3A, Light air-cured				
Type 31, Burley:				
Kentucky	70,000	75,000	70,000	93
Missouri ²	1,500	(NA)	(NA)	(X)
North Carolina	3,300	3,400	3,600	106
Ohio	3,400	3,400	2,900	85
Pennsylvania	4,300	4,100	4,200	102
Tennessee	13,000	14,000	15,000	107
Virginia	2,000	2,000	2,100	105
United States	97,500	101,900	97,800	96
Type 32, Southern Maryland:				
Pennsylvania	1,800	2,100	2,200	105
Total light air-cured (31-32)	99,300	104,000	100,000	96
Class 3b, Dark air-cured (35-37)				
Kentucky	6,900	4,600	4,500	98
Tennessee	1,600	1,200	1,300	108
United States	8,500	5,800	5,800	100
Class 4, Cigar filler				
Type 41, Pennsylvania Seedleaf:				
Pennsylvania	1,800	2,000	2,100	105
Class 5, Cigar binder				
Type 51 Connecticut Valley Broadleaf:				
Connecticut	1,700	1,000	1,900	190
Massachusetts	500	300	850	283
United States	2,200	1,300	2,750	212
Class 6, Cigar wrapper				
Type 61, Connecticut Valley Shade-grown:				
Connecticut	900	800	(D)	(X)
Massachusetts	190	90	(D)	(X)
United States	1,090	890	720	81
Total cigar types (41-61)	5,090	4,190	5,570	133
All Tobacco	354,490	354,140	334,020	94

(D) Withheld to avoid disclosing data for individual operations.

(NA) Not available.

(X) Not applicable.

¹ Intended area harvested in 2010 as indicated by reports from farmers.

² Estimates discontinued in 2009.

Dry Edible Bean Area Planted - States and United States: 2008-2010

[Excludes beans grown for garden seed]

State	Area planted			
	2008 (1,000 acres)	2009 (1,000 acres)	2010 ¹ (1,000 acres)	2010/2009 (percent)
Arizona ²	(NA)	15.5	13.0	84
California	52.0	68.5	63.5	93
Colorado	48.0	57.0	58.0	102
Idaho	80.0	100.0	125.0	125
Kansas	6.0	8.5	7.0	82
Michigan	200.0	200.0	240.0	120
Minnesota	150.0	150.0	200.0	133
Montana	11.2	11.9	10.6	89
Nebraska	135.0	130.0	160.0	123
New Mexico	9.3	12.5	12.5	100
New York	17.0	16.0	19.0	119
North Dakota	660.0	610.0	680.0	111
Oregon	4.8	6.4	7.0	109
South Dakota	8.5	10.3	12.0	117
Texas	24.0	37.0	35.0	95
Utah ³	1.2	(NA)	(NA)	(X)
Washington	50.0	60.0	75.0	125
Wisconsin	6.5	6.4	6.0	94
Wyoming	31.5	37.5	43.0	115
United States	1,495.0	1,537.5	1,766.6	115

(NA) Not available.

(X) Not applicable.

¹ Intended plantings in 2010 as indicated by reports from farmers.

² Estimates began in 2009.

³ Estimates discontinued in 2009.

Chickpea (Garbanzo Bean) Area Planted - States and United States: 2008-2010

Size and State	Area planted			
	2008 (1,000 acres)	2009 (1,000 acres)	2010 ¹ (1,000 acres)	2010/2009 (percent)
Small Chickpeas ²				
Idaho	4.3	10.5	18.0	171
Montana	0.9	1.9	1.6	84
North Dakota	4.0	9.0	7.0	78
South Dakota	0.9	1.1	1.0	91
Washington	1.6	-	4.0	(X)
United States	11.7	22.5	31.6	140
Large Chickpeas ³				
California	6.4	14.4	11.5	80
Idaho	26.7	22.0	25.0	114
Montana	1.7	0.4	-	(X)
North Dakota	5.3	4.2	10.0	238
Oregon	0.7	0.4	1.5	375
South Dakota	1.5	1.0	1.0	100
Washington	29.5	31.1	50.0	161
United States	71.8	73.5	99.0	135
All Chickpeas				
California	6.4	14.4	11.5	80
Idaho	31.0	32.5	43.0	132
Montana	2.6	2.3	1.6	70
North Dakota	9.3	13.2	17.0	129
Oregon	0.7	0.4	1.5	375
South Dakota	2.4	2.1	2.0	95
Washington	31.1	31.1	54.0	174
United States	83.5	96.0	130.6	136

- Represents zero.

(X) Not applicable.

¹ Intended plantings in 2010 as indicated by reports from farmers. Chickpea acres included with dry bean acres.

² Garbanzo beans smaller than 20/64 inch.

³ Garbanzo beans larger than 20/64 inch.

Lentil Area Planted - States and United States: 2008-2010

State	Area planted			
	2008	2009	2010 ¹	2010/2009
	(1,000 acres)	(1,000 acres)	(1,000 acres)	(percent)
Idaho	38.0	53.0	50.0	94
Montana	83.0	122.0	195.0	160
North Dakota	95.0	165.0	200.0	121
Washington	55.0	75.0	65.0	87
United States	271.0	415.0	510.0	123

¹ Intended plantings in 2010 as indicated by reports from farmers.

Dry Edible Pea Area Planted - States and United States: 2008-2010

State	Area planted			
	2008	2009	2010 ¹	2010/2009
	(1,000 acres)	(1,000 acres)	(1,000 acres)	(percent)
Idaho	37.0	42.0	30.0	71
Montana	245.0	240.0	240.0	100
North Dakota	520.0	490.0	490.0	100
Oregon	5.5	6.3	7.0	111
Washington	75.0	85.0	70.0	82
United States	882.5	863.3	837.0	97

¹ Intended plantings in 2010 as indicated by reports from farmers.

Austrian Winter Pea Area Planted - States and United States: 2008-2010

State	Area planted			
	2008	2009	2010 ¹	2010/2009
	(1,000 acres)	(1,000 acres)	(1,000 acres)	(percent)
Idaho	5.0	8.0	13.0	163
Montana	10.0	10.0	13.0	130
Oregon	2.5	2.5	3.5	140
United States	17.5	20.5	29.5	144

¹ Intended plantings in 2010 as indicated by reports from farmers.

Sweet Potato Area Planted - States and United States: 2008-2010

State	Area planted			
	2008 (1,000 acres)	2009 (1,000 acres)	2010 ¹ (1,000 acres)	2010/2009 (percent)
Alabama	2.6	2.6	3.0	115
Arkansas ²	(NA)	3.0	3.3	110
California	14.8	17.4	18.5	106
Florida ²	(NA)	3.0	3.8	127
Louisiana	15.0	14.0	16.0	114
Mississippi	20.0	20.0	20.0	100
New Jersey	1.2	1.2	1.2	100
North Carolina	47.0	47.0	50.0	106
South Carolina ³	0.6	(NA)	(NA)	(X)
Texas	1.7	1.4	1.3	93
Virginia ³	0.3	(NA)	(NA)	(X)
United States	103.2	109.6	117.1	107

(NA) Not available.

(X) Not applicable.

¹ Intended plantings in 2010 as indicated by reports from farmers.

² Estimates began in 2009.

³ Estimates discontinued in 2009.

Crop Area Planted and Harvested - United States: 2009 and 2010 (Domestic Units)

[Data are the latest estimates available, either from the current report or from previous reports. Current year estimates are for the full 2010 crop year. Blank data cells indicate estimation period has not yet begun]

Crop	Area planted		Area harvested	
	2009	2010	2009	2010
	(1,000 acres)	(1,000 acres)	(1,000 acres)	(1,000 acres)
Grains and hay				
Barley	3,567.0	3,273.0	3,113.0	
Corn for grain ¹	86,482.0	88,798.0	79,620.0	
Corn for silage	(NA)		5,605.0	
Hay, all	(NA)	(NA)	59,755.0	60,460.0
Alfalfa	(NA)		21,227.0	
All other	(NA)		38,528.0	
Oats	3,404.0	3,364.0	1,379.0	
Proso millet	350.0		293.0	
Rice	3,135.0	3,411.0	3,103.0	
Rye	1,241.0		252.0	
Sorghum for grain ¹	6,633.0	6,360.0	5,520.0	
Sorghum for silage	(NA)		254.0	
Wheat, all	59,133.0	53,827.0	49,868.0	
Winter	43,311.0	37,698.0	34,485.0	
Durum	2,554.0	2,223.0	2,428.0	
Other spring	13,268.0	13,906.0	12,955.0	
Oilseeds				
Canola	827.0	1,228.1	814.0	
Cottonseed	(X)	(X)	(X)	
Flaxseed	317.0	420.0	314.0	
Mustard seed	51.5		49.8	
Peanuts	1,116.0	1,201.0	1,081.0	
Rapeseed	1.0		0.9	
Safflower	175.0		165.5	
Soybeans for beans	77,451.0	78,098.0	76,372.0	
Sunflower	2,030.0	2,181.0	1,953.5	
Cotton, tobacco, and sugar crops				
Cotton, all	9,149.2	10,505.0	7,690.5	
Upland	9,007.5	10,315.0	7,552.0	
American Pima	141.7	190.0	138.5	
Sugarbeets	1,183.2	1,174.2	1,145.3	
Sugarcane	(NA)		877.7	
Tobacco	(NA)	(NA)	354.1	334.0
Dry beans, peas, and lentils				
Austrian winter peas	20.5	29.5	13.7	
Dry edible beans	1,537.5	1,766.6	1,463.0	
Dry edible peas	863.3	837.0	837.9	
Lentils	415.0	510.0	407.0	
Wrinkled seed peas	(NA)		(NA)	
Potatoes and miscellaneous				
Coffee (Hawaii)	(NA)		6.3	
Hops	(NA)		39.7	
Peppermint oil	(NA)		69.8	
Potatoes, all	1,069.8		1,045.0	
Winter	9.0		8.7	
Spring	79.2		73.7	
Summer	44.5		43.0	
Fall	937.1		919.6	
Spearmint oil	(NA)		20.5	
Sweet potatoes	109.6	117.1	97.7	
Taro (Hawaii) ²	(NA)		0.4	

(NA) Not available.

(X) Not applicable.

¹ Area planted for all purposes.

² Area is total acres in crop, not harvested acreage.

Crop Yield and Production - United States: 2009 and 2010 (Domestic Units)

[Data are the latest estimates available, either from the current report or from previous reports. Current year estimates are for the full 2010 crop year. Blank data cells indicate estimation period has not yet begun]

Crop	Yield		Production	
	2009	2010	2009	2010
			(1,000)	(1,000)
Grains and hay				
Barley	bushels	73.0	227,323	
Corn for grain	bushels	164.9	13,130,632	
Corn for silage	tons	19.3	108,209	
Hay, all	tons	2.47	147,442	
Alfalfa	tons	3.35	71,030	
All other	tons	1.98	76,412	
Oats	bushels	67.5	93,081	
Proso millet	bushels	33.7	9,865	
Rice ¹	cwt	7,085	219,850	
Rye	bushels	27.8	6,993	
Sorghum for grain	bushels	69.4	382,983	
Sorghum for silage	tons	14.5	3,680	
Wheat, all	bushels	44.4	2,216,171	
Winter	bushels	44.2	1,522,718	
Durum	bushels	44.9	109,042	
Other spring	bushels	45.1	584,411	
Oilseeds				
Canola	pounds	1,811	1,474,130	
Cottonseed	tons	(X)	4,178.0	
Flaxseed	bushels	23.6	7,423	
Mustard seed	pounds	991	49,364	
Peanuts	pounds	3,412	3,688,350	
Rapeseed	pounds	1,700	1,530	
Safflower	pounds	1,462	241,970	
Soybeans for beans	bushels	44.0	3,359,011	
Sunflower	pounds	1,554	3,036,460	
Cotton, tobacco, and sugar crops				
Cotton, all ¹	bales	774	12,401.3	
Upland ¹	bales	763	12,011.0	
American Pima ¹	bales	1,353	390.3	
Sugarbeets	tons	25.8	29,519	
Sugarcane	tons	34.4	30,151	
Tobacco	pounds	2,325	823,290	
Dry beans, peas, and lentils				
Austrian winter peas ¹	cwt	1,328	182	
Dry edible beans ¹	cwt	1,733	25,360	
Dry edible peas ¹	cwt	2,045	17,137	
Lentils ¹	cwt	1,440	5,859	
Wrinkled seed peas	cwt	(NA)	874	
Potatoes and miscellaneous				
Coffee (Hawaii)	pounds	1,270	8,000	
Hops	pounds	2,383	94,677.9	
Peppermint oil	pounds	91	6,379	
Potatoes, all	cwt	413	431,425	
Winter	cwt	245	2,132	
Spring	cwt	289	21,321	
Summer	cwt	336	14,469	
Fall	cwt	428	393,503	
Spearmint oil	pounds	132	2,698	
Sweet potatoes	cwt	201	19,647	
Taro (Hawaii)	pounds	(NA)	4,000	

(NA) Not available.

(X) Not applicable.

¹ Yield in pounds.

Crop Area Planted and Harvested - United States: 2009 and 2010 (Metric Units)

[Data are the latest estimates available, either from the current report or from previous reports. Current year estimates are for the full 2010 crop year. Blank data cells indicate estimation period has not yet begun]

Crop	Area planted		Area harvested	
	2009	2010	2009	2010
	(hectares)	(hectares)	(hectares)	(hectares)
Grains and hay				
Barley	1,443,530	1,324,550	1,259,800	
Corn for grain ¹	34,998,400	35,935,660	32,221,420	
Corn for silage	(NA)		2,268,290	
Hay, all ²	(NA)	(NA)	24,182,250	24,467,560
Alfalfa	(NA)		8,590,350	
All other	(NA)		15,591,900	
Oats	1,377,560	1,361,380	558,070	
Proso millet	141,640		118,570	
Rice	1,268,700	1,380,400	1,255,750	
Rye	502,220		101,980	
Sorghum for grain ¹	2,684,310	2,573,830	2,233,890	
Sorghum for silage	(NA)		102,790	
Wheat, all ²	23,930,530	21,783,250	20,181,080	
Winter	17,527,530	15,256,000	13,955,730	
Durum	1,033,580	899,630	982,590	
Other spring	5,369,430	5,627,620	5,242,760	
Oilseeds				
Canola	334,680	497,000	329,420	
Cottonseed	(X)	(X)	(X)	
Flaxseed	128,290	169,970	127,070	
Mustard seed	20,840		20,150	
Peanuts	451,630	486,030	437,470	
Rapeseed	400		360	
Safflower	70,820		66,980	
Soybeans for beans	31,343,650	31,605,480	30,906,980	
Sunflower	821,520	882,630	790,560	
Cotton, tobacco, and sugar crops				
Cotton, all ²	3,702,590	4,251,270	3,112,270	
Upland	3,645,250	4,174,380	3,056,220	
American Pima	57,340	76,890	56,050	
Sugarbeets	478,830	475,190	463,490	
Sugarcane	(NA)		355,200	
Tobacco	(NA)	(NA)	143,320	135,170
Dry beans, peas, and lentils				
Austrian winter peas	8,300	11,940	5,540	
Dry edible beans	622,210	714,930	592,060	
Dry edible peas	349,370	338,730	339,090	
Lentils	167,950	206,390	164,710	
Wrinkled seed peas	(NA)		(NA)	
Potatoes and miscellaneous				
Coffee (Hawaii)	(NA)		2,550	
Hops	(NA)		16,080	
Peppermint oil	(NA)		28,250	
Potatoes, all ²	432,940		422,900	
Winter	3,640		3,520	
Spring	32,050		29,830	
Summer	18,010		17,400	
Fall	379,230		372,150	
Spearmint oil	(NA)		8,300	
Sweet potatoes	44,350	47,390	39,540	
Taro (Hawaii) ³	(NA)		180	

(NA) Not available.

(X) Not applicable.

¹ Area planted for all purposes.

² Total may not add due to rounding.

³ Area is total hectares in crop, not harvested hectares.

Crop Yield and Production - United States: 2009 and 2010 (Metric Units)

[Data are the latest estimates available, either from the current report or from previous reports. Current year estimates are for the full 2010 crop year. Blank data cells indicate estimation period has not yet begun]

Crop	Yield		Production	
	2009	2010	2009	2010
	(metric tons)	(metric tons)	(metric tons)	(metric tons)
Grains and hay				
Barley	3.93		4,949,370	
Corn for grain	10.35		333,533,420	
Corn for silage	43.28		98,165,550	
Hay, all ¹	5.53		133,757,130	
Alfalfa	7.50		64,437,330	
All other	4.45		69,319,800	
Oats	2.42		1,351,070	
Proso millet	1.89		223,730	
Rice	7.94		9,972,230	
Rye	1.74		177,630	
Sorghum for grain	4.35		9,728,220	
Sorghum for silage	32.48		3,338,440	
Wheat, all ¹	2.99		60,314,290	
Winter	2.97		41,441,590	
Durum	3.02		2,967,640	
Other spring	3.03		15,905,060	
Oilseeds				
Canola	2.03		668,650	
Cottonseed	(X)		3,790,220	
Flaxseed	1.48		188,550	
Mustard seed	1.11		22,390	
Peanuts	3.82		1,673,010	
Rapeseed	1.91		690	
Safflower	1.64		109,760	
Soybeans for beans	2.96		91,417,300	
Sunflower	1.74		1,377,320	
Cotton, tobacco, and sugar crops				
Cotton, all ¹	0.87		2,700,070	
Upland	0.86		2,615,090	
American Pima	1.52		84,980	
Sugarbeets	57.78		26,779,190	
Sugarcane	77.01		27,352,530	
Tobacco	2.61		373,440	
Dry beans, peas, and lentils				
Austrian winter peas	1.49		8,260	
Dry edible beans	1.94		1,150,310	
Dry edible peas	2.29		777,320	
Lentils	1.61		265,760	
Wrinkled seed peas	(NA)		39,640	
Potatoes and miscellaneous				
Coffee (Hawaii)	1.42		3,630	
Hops	2.67		42,950	
Peppermint oil	0.10		2,890	
Potatoes, all ¹	46.27		19,569,110	
Winter	27.47		96,710	
Spring	32.43		967,100	
Summer	37.71		656,300	
Fall	47.96		17,849,000	
Spearmint oil	0.15		1,220	
Sweet potatoes	22.54		891,170	
Taro (Hawaii)	(NA)		1,810	

(NA) Not available.

(X) Not applicable.

¹ Production may not add due to rounding.

Winter Weather Summary

Highlights: With weather patterns governed by El Niño and a persistent high-pressure system over eastern Canada and the northern Atlantic Ocean, cold, stormy conditions dominated the United States. El Niño supplied the energy for an active storm track across the central and southern United States, while the high-pressure system acted as an atmospheric block that repeatedly forced cold air southeastward across the Plains, Midwest, and Southeast.

According to preliminary information provided by the National Climatic Data Center, the Nation experienced its 18th-coldest and 19th wettest winter on record. The United States winter average temperature of 31.2 degrees Fahrenheit was 1.8 degrees Fahrenheit below the 1901-2000 mean, resulting in the coldest December-February period since 1984-85. It was among the ten coldest winters in nine southern States from Oklahoma and Texas eastward to South Carolina, Georgia, and Florida. Meanwhile, Maine posted its third-warmest winter since 1895-96.

Winter precipitation averaged 7.20 inches (111 percent of the long-term mean) across the contiguous United States. It was among the ten driest winters on record in Wyoming and Idaho, while top-ten wetness affected South Dakota, Alabama, and seven Atlantic Coast States from Florida to New Jersey.

Individual monthly highlights included a pair of December blizzards across parts of the Plains and upper Midwest, a severe, early-January freeze in Florida, and record-setting February snowfall in the Mid-Atlantic States and adjoining areas. The winter of 2009-10 will also be remembered for snow accumulations across the Deep South. Following a 3-year drought, California's key watershed areas received near-normal winter snowfall.

December: Cold, stormy December weather in the wake of a mild November stressed livestock but buried winter grains beneath a protective blanket of snow. Monthly temperatures generally averaged 4 to 12 degrees Fahrenheit below normal across the Plains, with early- to mid-month readings falling to -40 degrees Fahrenheit in parts of Montana and below 0 degrees Fahrenheit as far south as the central Plains.

Major storms struck the Nation's midsection on December 7-9 and 23-26, leaving late-month snow depths of 1 to 2 feet across the north-central United States. The snow hampered rural travel in the Plains and Midwest, and necessitated supplemental feeding for livestock. By December 20, the United States corn harvest was 95 percent complete, although nearly one in three fields (32 percent) remained unharvested in North Dakota.

Meanwhile, heavy rain soaked areas from southern Texas to the southern and middle Atlantic States. Monthly rainfall topped 20 inches in parts of the central Gulf Coast region, slowing late-season sugarcane harvesting. In addition, the Nation's cotton harvest was just 94 percent complete by December 20, with Georgia and Alabama reporting 82 and 84 percent harvested, respectively. From December 18-20, major snow accumulations (1 to 2 feet) were reported from the southern Appalachians into southern New England.

Elsewhere, beneficial precipitation fell during December from central and southern California into the Intermountain West, while drier-than-normal conditions prevailed in the Northwest.

January: A protracted and severe cold outbreak struck Florida's peninsula during the first half of the month, causing varying degrees of damage to citrus, sugarcane, vegetables, and specialty crops. Much of the significant damage occurred on January 6-7 and 10-12, when temperatures dipped below 20 degrees Fahrenheit in some northwestern citrus areas and fell to 32 degrees Fahrenheit or below as far south as the winter vegetable production area near Homestead, south of Miami.

Monthly temperatures averaged at least 5 degrees Fahrenheit below normal across much of Florida's peninsula, and were also below normal across the remainder of the Southeast. Below-normal temperatures were also noted in much of the western Corn Belt, where a very deep snow cover was established during December and persisted through January. In contrast, above-normal January temperatures dominated the Nation's northern tier and much of the West. Monthly readings averaged at least 5 degrees Fahrenheit above normal in northern New England and portions of the Northwest. At some Northwestern locations, it was the warmest January on record.

Relatively dry conditions accompanied the Northwestern warmth, consistent with the maturation of a strong El Niño. Meanwhile, a barrage of mid- to late-month storms struck areas from California to the southern Plains, more than doubling the water content of the Sierra Nevada snow pack and improving water-supply prospects throughout the Nation's southwestern quadrant.

Across the Nation's midsection, short-term dryness on the central Plains contrasted with wetter-than-normal conditions on the northern and southern Plains. On the northern Plains, snow helped to protect winter wheat from a variety of weather extremes. On the southern Plains, several episodes of wintry precipitation caused travel disruptions but aided pastures and winter grains.

Farther north and east, wintry weather added to already impressive snow depths in the western Corn Belt. In contrast, relatively dry conditions prevailed in the eastern Corn Belt, another signal consistent with a strong, mature El Niño. Elsewhere, frequent precipitation maintained unfavorably soggy conditions from Alabama, Georgia, and northern Florida into the southern Mid-Atlantic States. The Southeastern wetness hampered fieldwork, including final summer crop harvest efforts, and left standing water in some winter wheat fields.

February: A weather regime driven by El Niño and a high-pressure block over eastern Canada and the northern Atlantic Ocean persisted through the end of February. El Niño contributed to an active sub-tropical jet stream, resulting in generally wet conditions from California into the Southeast. However, storm systems carried by the jet stream were prevented by the high-pressure block from quickly exiting the eastern United States, resulting in numerous slow-moving storms near the Atlantic Seaboard. The block also helped to drive cold air southward across the Plains, Midwest, and Southeast. Monthly temperatures generally ranged from 5 to 10 degrees Fahrenheit below normal from the Plains into the Southeast, while above-average values were noted in the Northwest and from the Great Lakes region into New England.

Historic snowfall totals were noted during February in the Mid-Atlantic States and neighboring areas. On February 12, snow briefly covered at least a portion of all 48 contiguous States. In the Southeast, excessive moisture remained a concern with respect to the soft red winter wheat crop, which in some cases was already suffering due to late planting and poor establishment.

Farther north, much of the Midwest experienced another cold, snowy month. At times during February, snow covered the entire Midwest, although coverage was deepest and most persistent in the western Corn Belt. Upper Midwestern livestock continued to endure a very difficult winter, which had begun in earnest with a pair of December blizzards.

Meanwhile on the Plains, snow helped to insulate much of the hard red winter wheat crop, which continued to overwinter with no major concerns. On the southern Plains, February precipitation aided wheat which had been previously stressed by drier-than-normal conditions.

Elsewhere, California received another burst of beneficial precipitation toward month's end, following a brief lull in storminess in early to mid-February. The Southwest also continued to receive drought-easing rain and snow. In contrast, unfavorably dry conditions and sub-par snow packs in much of the Northwest increased the likelihood of drought development and below-average spring and summer runoff.

Crop Comments

Corn: Growers intend to plant 88.8 million acres of corn for all purposes in 2010, up 3 percent from both last year and 2008. Planted acreage is expected to be up in many States due to reduced winter wheat acreage and expectations of improved net returns.

The largest increases are expected in Illinois and Kansas, both up 600,000 acres from last year. Ohio and Missouri corn acreage is expected to be up 350,000 and 300,000 acres, respectively. The largest declines are expected in Iowa, down 200,000 acres, Texas, down 150,000 acres, and Louisiana, down 100,000 acres.

Sorghum: The 2010 sorghum area intended to be planted for all purposes is estimated at 6.36 million acres, down 4 percent from 2009. Producers in Kansas intend to plant 2.70 million acres, unchanged from last year. The largest decline

is expected in Texas, where farmers intend to plant 300,000 acres less than 2009. Planting was underway in early March in the Coastal Bend region of Texas, as 24 percent of the State's crop was planted by March 21, five percentage points behind the 5-year average.

Oats: Growers intend to plant an estimated 3.36 million acres, down 1 percent from the 3.40 million acres planted in 2009. If realized, this will be the second lowest planted acreage on record. Most of the decrease in acreage is expected to be in the Pacific Northwest, Rocky Mountain States, and the Southeast. The largest decrease is expected to occur in North Dakota, where growers intend to plant 320,000 acres, 30,000 less than last year. The largest increase is in Texas, where 650,000 acres are expected, an increase of 50,000 acres from 2009.

Barley: Producers intend to plant 3.27 million acres for the 2010 crop year, down 8 percent from the previous year. If realized, this will be the lowest barley planted acreage on record, well below the previous record low of 3.45 million acres established in 2006. Planted area is expected to total 980,000 acres in North Dakota, the largest barley-producing State, down 230,000 acres or 19 percent from 2009. If realized, this will establish a new record low for the State. Planted acreage is also anticipated to decline to record low levels in South Dakota and Utah.

Winter Wheat: The 2010 winter wheat planted area is estimated at 37.7 million acres, down 13 percent from 2009 but up 2 percent from the *Winter Wheat Seedings* report. This is the lowest United States total since 1970 and record lows are estimated in Illinois, Indiana, Missouri, Nebraska, and Ohio. States with notable acreage increases from the previous estimate were Nebraska and Texas, up 100,000 and 200,000 acres, respectively. Of the 2010 total acreage, about 28.3 million acres are Hard Red Winter, 6.0 million acres are Soft Red Winter, and 3.4 million acres are White Winter. Winter wheat conditions declined over the winter in several States. Adequate moisture levels were reported throughout much of the Great Plains.

Durum Wheat: Area seeded to Durum wheat is estimated at 2.22 million acres, down 13 percent from 2009. Planted acreage is expected to be down in all producing States except Idaho. Growers in North Dakota and Montana intend to reduce acreage from last year by 150,000 and 70,000 acres, respectively.

Other Spring Wheat: Growers intend to plant 13.9 million acres this year, up 5 percent from 2009. Of the total, about 13.3 million acres are Hard Red Spring wheat. The largest expected acreage increases are in Montana and North Dakota, up 400,000 and 250,000, respectively. Growers in Minnesota intend to plant 100,000 fewer acres than last year.

Rice: Area planted to rice in 2010 is expected to total 3.41 million acres, up 9 percent from 2009. Acreage in all rice-producing States is expected to increase from the previous year, mainly due to the higher price of rice compared to other commodities such as corn and soybeans. Growers in Arkansas, the largest rice-producing State, intend to plant 1.63 million acres, up 10 percent from last year. California growers intend to plant 600,000 acres to rice, an increase of 7 percent from last year, and planted area in Louisiana is expected to total 510,000 acres, 9 percent higher than last season.

Long grain planted acreage, representing 75 percent of the total, is expected to be up 12 percent from last year. Medium grain planted acreage, representing 23 percent of the total, is expected to decrease 1 percent from 2009 due to anticipated decreases in all States except California. Area to be planted to short grain varieties, which accounts for 2 percent of total acres, is down 1,000 acres from 2009.

Hay: Producers expect to harvest 60.5 million acres of all hay in 2010, up 1 percent from 2009. Harvested area is expected to increase from last year throughout most of the Southern Great Plains, Southwest, and Coastal Plains. The largest increases in acreage harvested are expected in Kansas, Missouri, Ohio, Texas, and Wisconsin. Compared with last year, producers in Missouri and Texas intend to harvest 220,000 and 180,000 more acres, respectively, while growers in Montana and Kentucky expect to harvest 100,000 and 70,000 less acres, respectively.

Soybeans: Growers intend to plant an estimated 78.1 million acres in 2010, up less than 1 percent from the acreage planted in 2009 and the largest on record, if realized. Compared with last year, increases in planted area are expected across the Great Plains and most of the Corn Belt. The largest increases are expected in Iowa and Kansas, up 300,000 and 400,000 acres from last year, respectively. Meanwhile, planted area is expected to decline from last year or remain the

same across the Delta and Southeastern States with decreases of more than 100,000 acres expected in Arkansas, Georgia, North Carolina, and Tennessee. If intentions are realized, the planted acreage in Kansas, North Dakota, and Pennsylvania will be the largest on record.

Peanuts: Growers intend to plant 1.20 million acres of peanuts in 2010, up 8 percent from the previous year. An increase in planted area is expected in the Southeast and Virginia-Carolina regions while peanut acreage is expected to decrease in the Southwest region.

Southeast growers (Alabama, Florida, Georgia, Mississippi, and South Carolina) intend to plant 925,000 acres of peanuts, an increase of 9 percent from 2009. In Georgia, the largest peanut-producing State, planted area is expected to increase 6 percent from last season to 540,000 acres. Plantings in the Virginia-North Carolina region are expected to total 100,000 acres, up 27 percent from 2009. The increase in planted area in these two regions is due to the expectation of higher contract prices and the anticipated decrease of corn and soybean acres.

Growers in the Southwest (New Mexico, Oklahoma, and Texas) intend to plant 176,000 acres, down 5 percent from the previous year. Growers in this region expect to plant more acres to cotton this year.

Sunflower: Growers intend to plant a total of 2.18 million acres in 2010, up 7 percent from last year but down 13 percent from 2008. Area intended for oil type varieties, at 1.71 million acres, is up less than 1 percent from 2009. The area intended for non-oil varieties, estimated at 467,000 acres, is up 41 percent from last year.

North Dakota sunflower growers intend to plant 975,000 acres in 2010, up 90,000 acres from 2009. Compared with last year, six of the nine major sunflower-producing States are expecting an increase in planted area in 2010, with only Kansas, Oklahoma, and Texas showing decreases in expected acreage.

Canola: Producers intend to plant 1.23 million acres in 2010, up 49 percent from 2009. Compared with last year, planted area is expected to increase in the six major canola-producing States, with acreage in Minnesota and Montana expected to more than double the previous year's area. Producers in North Dakota, the leading canola State, intend to plant 1.06 million acres, up 330,000 acres from last year.

Flaxseed: Producers intend to plant 420,000 acres of flaxseed in 2010, up 32 percent from last year. Planted area is expected to increase or remain unchanged from last year in all estimating States. In North Dakota, the largest flaxseed-producing State, growers intend to plant 395,000 acres, 100,000 acres more than was planted in 2009.

Cotton: Area planted to cotton for 2010 is expected to total 10.5 million acres, up 15 percent from last year. Upland acreage is expected to total 10.3 million acres, 15 percent above last year. American-Pima cotton growers intend to plant 190,000 acres, up 34 percent from last year. Producers intend to plant more acres of cotton due to higher cotton prices over the last few months.

Upland growers in the Delta States (Arkansas, Louisiana, Mississippi, Missouri, and Tennessee) intend to plant 1.73 million acres, a 6 percent increase from the previous year. Farmers in Mississippi expect to plant 340,000 acres, 11 percent more than last year. Louisiana producers intend to plant 200,000 acres, down 13 percent from last year and the lowest on record. In Arkansas, producers intend to plant 520,000 acres, unchanged from last year. Tennessee producers, at 380,000 acres, intend to plant 27 percent more than last year.

In the Southeastern States (Alabama, Florida, Georgia, North Carolina, South Carolina, and Virginia) growers intend to plant 2.39 million acres, an increase of 26 percent from last year. Georgia producers intend to plant 1,150,000 acres, up 15 percent from last year. North Carolina, at 540,000 acres, is 44 percent more than 2009. Alabama producers intend to plant 360,000 acres, up 41 percent from last year. In South Carolina, producers intend to plant 175,000 acres, up 52 percent from 2009.

Upland cotton producers in Kansas, New Mexico, Oklahoma, and Texas intend to plant 5.91 million acres, a 12 percent increase from last year. Texas producers intend to plant 5.60 million acres, up 600,000 acres from last year. In Southern Texas, planting is underway. Oklahoma producers intend to plant 240,000 acres, up 17 percent from last year.

Upland planted acreage in Arizona and California is expected to total 285,000 acres, up 32 percent from last year. California farmers are expected to plant 100,000 acres, an increase of 41 percent and the first increase since 2004. The significant increase stems from an improved water outlook and decreased demand for competitive crops. Arizona producers intend to plant 185,000 acres, up 28 percent from last year.

American-Pima acreage intentions are 190,000 acres, an increase of 34 percent from 2009. California producers intend to plant 165,000 acres of American-Pima, up 46,000 acres from last year. Expected area is unchanged in Texas, where producers intend to plant 18,000 acres.

Sugarbeets: Area planted to sugarbeets for the 2010 crop year is expected to total 1.17 million acres, down 1 percent from the previous year. Planting intentions decreased from the previous year in California, Colorado, Minnesota, and Nebraska. In Minnesota, the largest sugarbeet-producing State, an 18,000 acre or 4 percent decrease is anticipated. Planted area in California is expected to total 25,000 acres. If realized, this will establish a new record low for the sixth consecutive year for California.

Intended plantings increased in 6 of the 10 estimating States. The largest increase in acreage is expected in Michigan, where producers intend to plant 9,000 more acres than in 2009.

Tobacco: U.S. all tobacco area for harvest in 2010 is expected to be 334,020 acres, down 6 percent from 2009 and 2008. Expected decreases in flue-cured, burley, and fire-cured tobacco will offset increases in cigar type tobacco.

Flue-cured tobacco intentions, at 207,000 acres, are 8 percent below 2009 and 7 percent lower than 2008. Flue-cured tobacco accounts for 62 percent of this year's expected total tobacco acreage. Acreage in North Carolina, the leading flue-cured State, is down 6 percent from last year and 4 percent below 2008. Growers in Georgia, South Carolina, and Virginia expect acreage to decrease from a year ago by 29 percent, 8 percent, and 9 percent, respectively.

Light air-cured tobacco type acreage is expected to be down 4 percent from a year ago but 1 percent above 2008. Burley tobacco, at 97,800 acres, is 4 percent below last year but slightly above the low record established in 2008 at 97,500 acres. Acreage in Kentucky, the leading burley tobacco State, is expected to decrease by 7 percent from a year ago. Growers in Ohio expect acreage to decrease from 2009 by 15 percent. Pennsylvania's southern Maryland type tobacco acres are estimated at 2,200, up 5 percent from 2009 and 22 percent above 2008.

Fire-cured tobacco intentions, at 15,650 acres, are down 3 percent from 2009 and 16 percent below 2008. Acreage in Kentucky and Tennessee is expected to decrease from last year by 1 percent and 6 percent, respectively. Acreage in Virginia is expected to remain unchanged from a year ago.

Dark air-cured tobacco intentions, at 5,800 acres, are unchanged from last year but down 32 percent from 2008. Fewer acres are being contracted for the dark tobacco types. Growers in Kentucky are expecting acreage to decrease from a year ago by 2 percent. Acreage in Tennessee is expected to increase 8 percent from the previous year.

All cigar type tobacco intentions, at 5,570 acres, are 33 percent above last year and 9 percent higher than 2008. Increases in cigar binder and cigar filler are expected to more than offset decreases in shade-grown tobacco. Connecticut Valley Broadleaf area for harvest, at 2,750 acres, is 112 percent above the previous hail affected crop year and 25 percent higher than 2008. Pennsylvania Seedleaf, at 2,100 acres, is expected to be up 5 percent from a year ago. Expected acres of Connecticut Valley Shade-grown tobacco are 720, down 19 percent from a year ago.

Sweet Potatoes: Planted area of sweet potatoes is expected to total 117,100 acres for the 2010 season, up 7 percent from last year and 13 percent above 2008. The largest increases are expected in California, Louisiana, and North Carolina.

Strong demand has led to an increase in expected acres in six of the nine estimating States. In Louisiana, a new processing facility is lending additional support to higher acreage intentions. Planted acreage in Mississippi and New Jersey is expected to be unchanged from last year, while growers in Texas intend to plant fewer acres than last season.

Dry Beans: Growers intend to plant 1.77 million acres in 2010, up 15 percent from last year. Expected area planted for all chickpeas is 130,600 acres, up 36 percent from last year and 56 percent higher than 2008. Small chickpea area, at 31,600 acres, is 40 percent higher than 2009, while large chickpea acreage is expected to increase 35 percent. Small chickpeas are defined as peas that will pass through a 20/64 inch round hole screen.

Acreage increases are expected in 11 of the 18 dry bean estimating States. In North Dakota, the largest producing State, growers intend to plant 680,000 acres, up 11 percent from last season. The top five States all show anticipated acreage increases between 11 and 33 percent.

Lentils: Area planted for the 2010 crop year is expected to total 510,000 acres, up 23 percent from 2009 and 88 percent above two years ago. If realized, this will be the highest planted acreage since records began in 1986. Montana and North Dakota anticipate higher planted acreages this season, while Idaho and Washington expect lower plantings from a year ago.

Farmers in North Dakota, the largest producing State, intend to plant 200,000 acres of lentils this year, up 21 percent from 2009. Acreage in Montana is expected to increase from last year by 60 percent to an anticipated 195,000 acres.

Dry Edible Peas: Growers intend to plant 837,000 acres, down 3 percent from 2009. Idaho and Washington anticipate lower planted acreages this season, while no acreage change is expected in Montana and North Dakota.

Farmers in North Dakota, the largest producing State, intend to plant 490,000 acres this year, while Montana growers plan to plant 240,000 acres. Growers in Idaho and Washington are expected to reduce their planted acreage from last year by 29 percent and 18 percent, respectively. Oregon growers anticipate an 11 percent increase from a year ago.

Austrian Winter Peas: Area planted for the 2010 crop year is expected to total 29,500 acres, up 44 percent from a year ago. Idaho, Montana, and Oregon anticipate higher planted acreages this season.

Statistical Methodology

Survey Procedures: The acreage estimates in this report are based primarily on surveys conducted during the first 2 weeks of March. The March Agricultural Survey is a probability survey that includes a sample of approximately 86,000 farm operators selected from a list of producers that ensures all operations in the United States have a chance to be selected. These operators were contacted by mail, internet, telephone, or personal interview to obtain information on crop acreage planned for the 2010 crop year.

Estimating Procedures: National, Regional, State, and grower reported data were reviewed for reasonableness and consistency with historical estimates. Each State Field Office submits their analysis of the current situation to the Agricultural Statistics Board (ASB). Survey data are compiled to the National level and are reviewed at this level independently of each State's review. Acreage estimates were based on survey data and the historical relationship of official estimates to the survey data.

Revision Policy: Acreage estimates in the "**Prospective Plantings**" report will not be revised. These estimates are intended to reflect grower intentions as of the survey period. New acreage estimates will be made based on surveys conducted in June when crop acreages have been established or planting intentions are firm. These new estimates will be published in the "**Acreage**" report scheduled for June 30, 2010. Winter wheat is an exception. Since winter wheat was seeded prior to the March survey, any changes in estimates in this report are considered revisions. The estimate of the harvested acreage of winter wheat will be published on May 11, 2010, along with the first production forecast of the crop year.

Reliability: The survey used to make acreage estimates is subject to sampling and non-sampling errors that are common to all surveys. Sampling errors represent the variability between estimates that would result if many different samples were surveyed at the same time. Sampling errors for major crops are generally between 1.0 and 3.0 percent, but they cannot be applied directly to the acreage published in this report to determine confidence intervals because the official estimates represent a composite of information from more than a single source.

Non-sampling errors cannot be measured directly. They may occur due to incorrect reporting and/or recording, data omissions or duplications, and errors in processing. To minimize non-sampling errors, vigorous quality controls are used in the data collection process and all data are carefully reviewed for consistency and reasonableness.

To assist users in evaluating the reliability of acreage estimates in this report, the "Root Mean Square Error," a statistical measure based on past performance, is computed. The deviations between the acreage estimates in this report and the final estimates are expressed as a percentage of the final estimates. The average of squared percentage deviations for the latest 20-year period is computed. The square root of the average becomes statistically the "Root Mean Square Error." Probability statements can be made concerning expected differences in the current estimates relative to the final end-of-season estimates, assuming that factors affecting this year's estimates are not different from those influencing recent years. For example, the "Root Mean Square Error" for the corn planted estimate is 2.0 percent. This means that chances are 2 out of 3 that the current corn acreage estimate will not be above or below the final estimate by more than 2.0 percent. Chances are 9 out of 10 (90 percent confidence level) that the difference will not exceed 3.5 percent.

Also, shown in the following table is a 20-year record for selected crops of the difference between the "**Prospective Plantings**" planted acreage estimates and the final estimates. Using corn again as an example, changes between the intentions estimates and the final estimates during the past 20 years have averaged 1.15 million acres, ranging from 32,000 acres to 3.84 million acres. The prospective plantings estimates have been below the final estimate 8 times and above 12 times. This does not imply that the planted estimate this year is likely to understate or overstate the final estimate.

Reliability of Prospective Plantings Planted Acreage Estimates

Crop	Root mean Square Error percent	90 percent confidence interval	20-year record of differences between forecast and final estimate				
			Thousand acres			Number of years	
			Average (1,000 acres)	Smallest (1,000 acres)	Largest (1,000 acres)	Below final (number)	Above final (number)
Corn	2.0	3.5	1,147	32	3,844	8	12
Sorghum	8.9	15.3	693	31	2,471	11	9
Oats	5.8	10.0	269	4	865	2	18
Barley	5.5	9.5	268	31	667	5	15
Winter wheat	1.5	2.5	516	6	1,415	8	12
Durum wheat	6.7	11.6	162	12	552	15	5
Other spring wheat	5.2	9.0	695	12	2,543	10	10
Soybeans	2.1	3.6	1,199	25	2,582	13	7
Upland cotton	4.5	7.7	440	6	1,320	11	9

Information Contacts

Listed below are the commodity statisticians in the Crops Branch of the National Agricultural Statistics Service to contact for additional information. Email inquiries may be sent to nass@nass.usda.gov

Lance Honig, Chief, Crops Branch	(202) 720-2127
Jacqueline Moore, Head, Field Crops Section	(202) 720-2127
Suzanne Avilla – Peanuts, Rice.....	(202) 720-7688
Shiela Corley – Cotton, Cotton Ginnings, Sorghum	(202) 720-5944
Bryan Durham – Hay, Oats	(202) 690-3234
Anthony Prillaman – Corn, Proso Millet, Flaxseed	(202) 720-9526
Nick Schauer – Wheat, Rye	(202) 720-8068
Julie Schmidt – Crop Weather, Barley, Sugar Crops	(202) 720-7621
Travis Thorson – Soybeans, Sunflower, Other Oilseeds.....	(202) 720-7369
Jorge Garcia-Pratts, Head, Fruits, Vegetables and Special Crops Section.....	(202) 720-2127
Debbie Flippin – Fresh and Processing Vegetables, Onions, Strawberries.....	(202) 720-2157
Fred Granja – Apples, Apricots, Cherries, Plums, Prunes, Tobacco	(202) 720-4288
Dawn Keen – Floriculture, Maple Syrup, Nursery, Tree Nuts	(202) 720-4215
Steve Maliszewski – Citrus, Coffee, Grapes, Tropical Fruits	(202) 720-5412
Tierra Mobley – Berries, Cranberries, Potatoes, Sweet Potatoes	(202) 720-4285
Dan Norris – Austrian Winter Peas, Dry Edible Peas, Lentils, Mints, Mushrooms, Peaches, Pears, Wrinkled Seed Peas, Dry Beans	(202) 720-3250
Kim Ritchie – Hops.....	(360) 902-1940

Access to NASS Reports

For your convenience, you may access NASS reports and products the following ways:

- All reports are available electronically, at no cost, on the NASS web site: <http://www.nass.usda.gov>
- Both national and state specific reports are available via a free e-mail subscription. To set-up this free subscription, visit <http://www.nass.usda.gov> and in the “Receive NASS Updates” box under “Receive reports by Email,” click on “National” or “State” to select the reports you would like to receive.
- Printed reports may be purchased from the National Technical Information Service (NTIS) by calling toll-free (800) 999-6779, or (703) 605-6220 if calling from outside the United States or Canada. Accepted methods of payment are Visa, MasterCard, check, or money order.

For more information on NASS surveys and reports, call the NASS Agricultural Statistics Hotline at (800) 727-9540, 7:30 a.m. to 4:00 p.m. ET, or e-mail: nass@nass.usda.gov.

The United States Department of Agriculture (USDA) prohibits discrimination in all its programs and activities on the basis of race, color, national origin, age, disability, and where applicable, sex, marital status, familial status, parental status, religion, sexual orientation, genetic information, political beliefs, reprisal, or because all or a part of an individual's income is derived from any public assistance program. (Not all prohibited bases apply to all programs.) Persons with disabilities who require alternative means for communication of program information (Braille, large print, audiotape, etc.) should contact USDA's TARGET Center at (202) 720-2600 (voice and TDD).

To file a complaint of discrimination, write to USDA, Director, Office of Civil Rights, 1400 Independence Avenue, S.W., Washington, D.C. 20250-9410, or call (800) 795-3272 (voice) or (202) 720-6382 (TDD). USDA is an equal opportunity provider and employer.