

Sheep and Goats

Released February 1, 2008, by the National Agricultural Statistics Service (NASS), Agricultural Statistics Board, U.S. Department of Agriculture. For information on *Sheep and Goats* call Scott Hollis at 202-720-4751, office hours 7:30 a.m. to 4:00 p.m. ET.

Total Sheep and Lamb Inventory Down 2 Percent

All sheep and lamb inventory in the United States on January 1, 2008, totaled 6.06 million head, down 2 percent from 2007. After consecutive increases in 2005 and 2006, inventory has now declined for the past two years.

Breeding sheep inventory decreased to 4.51 million head on January 1, 2008, down 2 percent from 4.61 million head on January 1, 2007. Ewes one year old and older, at 3.62 million head, were 2 percent below last year.

Market sheep and lambs on January 1, 2008, totaled 1.55 million head, down slightly from January 1, 2007. Market lambs comprised 95 percent of the total marketings. Twenty-four percent were lambs under 65 pounds, 14 percent were 65 - 84 pounds, 26 percent were 85 - 105 pounds, and 36 percent were over 105 pounds. Market sheep comprised the remaining 5 percent of total marketings.

The 2007 lamb crop of 4.05 million head, was down slightly from 2006. The 2007 lambing rate was 110 lambs per 100 ewes one year old and older on January 1, 2007, down 1 percent from 2006.

Shorn wool production in the United States during 2007 was 34.5 million pounds, down 4 percent from 2006. Sheep and lambs shorn totaled 4.71 million head, down 3 percent from 2006. The average price paid for wool sold in 2007 was \$0.88 per pound for a total value of 30.3 million dollars, up 23 percent from 24.5 million dollars in 2006.

Total Goat and Kid Inventory Up 3 Percent

All goat inventory in the United States on January 1, 2008, totaled 3.02 million head, up 3 percent from 2007. **Breeding goat inventory** totaled 2.50 million head up 2 percent from 2007. **All market goats and kids** totaled 520,000 head, up 4 percent from a year ago. On January 1, 2008 **meat and all other goats** totaled 2.50 million head, up 4 percent from 2007. **Milk goat** inventory increased 4 percent to 305,000 head while **angora goats** were down 12 percent totaling 210,000 head. The 2007 **kid crop** totaled 1.94 million head for all goats, up 1 percent from 2006.

Mohair production in the United States during 2007 was 1.14 million pounds. **Goats and kids clipped** totaled 185,000 head. Average weight per clip was 6.20 pounds. **Mohair price** was \$3.78 per pound with a value of 4.31 million dollars.

Contents

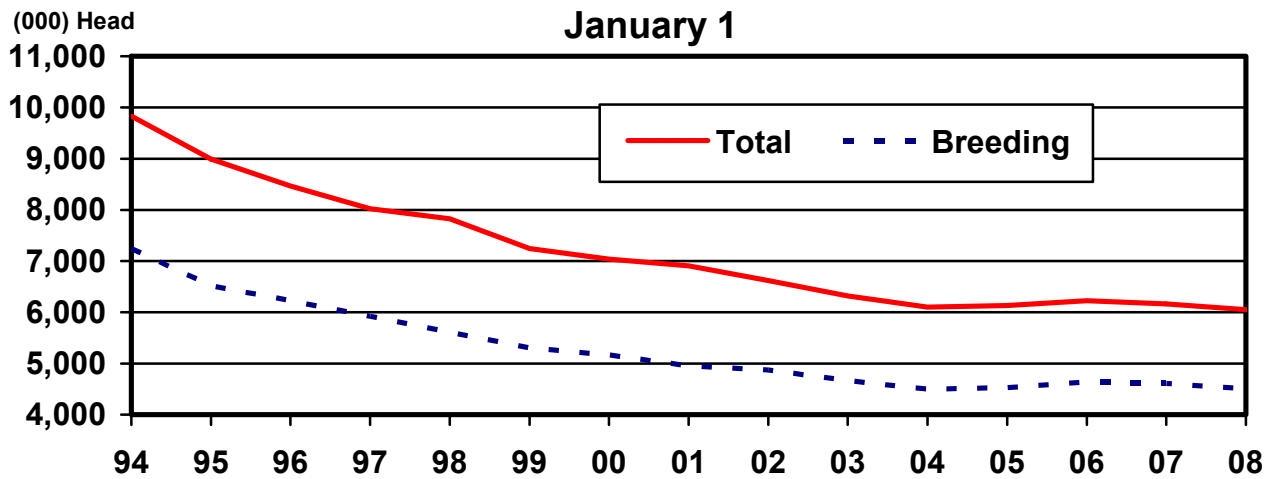
	Page
Sheep and Lambs	
U.S. Inventory by Class, 2006-2008	1
U.S. Wool Production, Price, and Value, 2005-2007	2
Inventory and Class by State, 2007-2008	3
Sheep Shorn and Wool Production by State, 2006-2007	8
Wool Price and Value by State, 2006-2007	9
Goats	
U.S. All Goat Inventory by Class 2006-2008	10
U.S. Angora Goat Inventory by Class 2006-2008	11
U.S. Milk Goat Inventory by Class 2006-2008	11
U.S. Meat Goat Inventory by Class 2006-2008	11
Angora Goat Inventory by State 2007-2008	12
Mohair Production, Price, and Value 2006-2007	12
Milk Goat Inventory by State 2007-2008	13
Meat and Other Goat Inventory by State 2007-2008	14
Reliability Statement	15
Information Contacts	16

**Sheep and Lambs: Number by Class, United States,
January 1, 2006-2008¹**

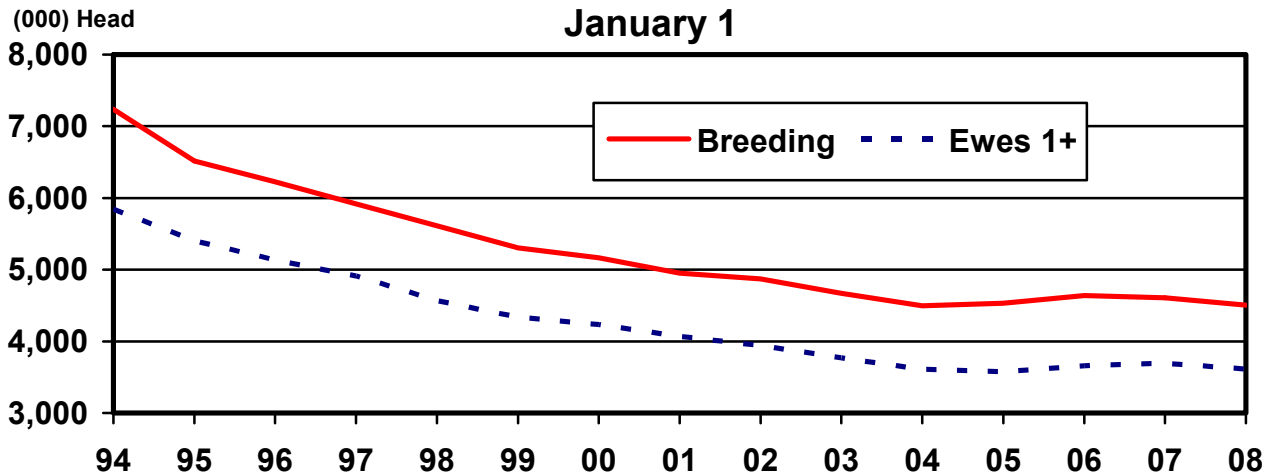
Class	2006	2007	2008	2008 as % of 2007
	<i>1,000 head</i>	<i>1,000 head</i>	<i>1,000 head</i>	<i>Percent</i>
All Sheep and Lambs	6,230	6,165	6,055	98
Breeding Sheep and Lambs	4,640	4,610	4,505	98
Replacement Lambs				
Under One Year Old	783	719	695	97
Ewes - One Year Old and Older	3,661	3,696	3,617	98
Rams - One Year Old and Older	196	195	193	99
Market	1,590	1,555	1,550	100

¹ May not add due to rounding.

**U.S. Sheep and Lambs Inventory
January 1**



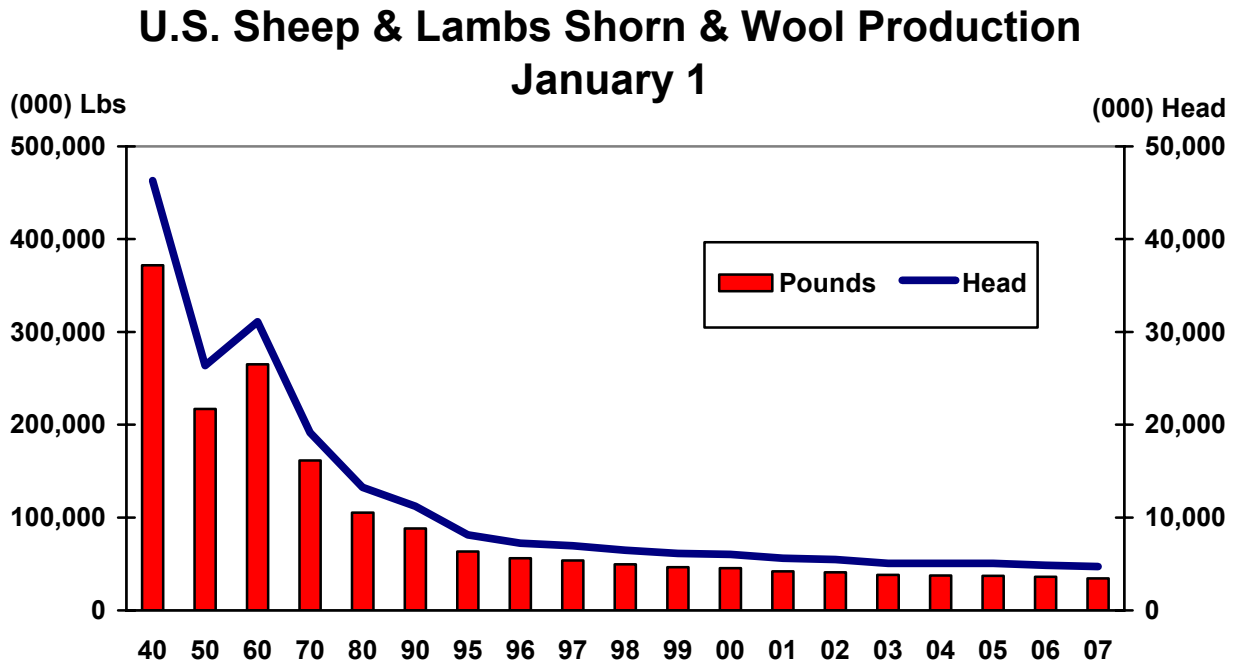
**U.S. Total Breeding and Ewes 1+
January 1**



Wool: Production, Price, and Value, United States, 2005-2007

Year	Sheep Shorn ¹	Weight per Fleece	Shorn Wool Production	Price per Pound	Value
	<i>1,000 Head</i>	<i>Pounds</i>	<i>1,000 Pounds</i>	<i>Dollars</i>	<i>1,000 Dollars</i>
2005	5,072	7.34	37,232	0.71	26,272
2006	4,852	7.42	36,019	0.68	24,510
2007	4,705	7.34	34,533	0.88	30,258

¹ Includes shearing at commercial feeding yards.



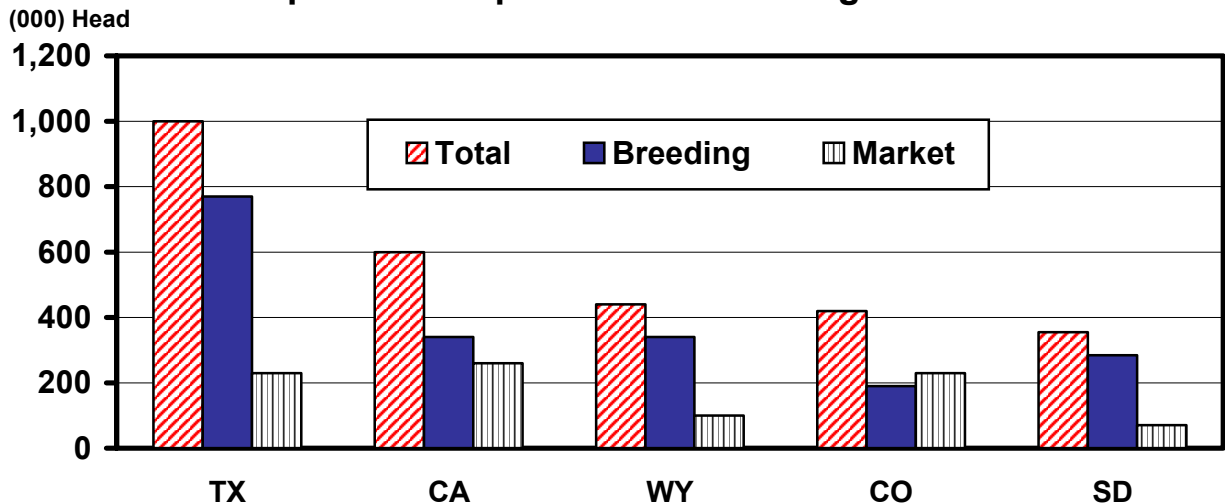
**All Sheep and Lambs: Number by Class,
State, and United States, January 1, 2007-2008**

State	All Sheep and Lambs			Total Breeding		Total Market	
	2007	2008	2008 as % of 2007	2007	2008	2007	2008
	<i>1,000 Head</i>	<i>1,000 Head</i>	<i>Percent</i>	<i>1,000 Head</i>	<i>1,000 Head</i>	<i>1,000 Head</i>	<i>1,000 Head</i>
AZ	110.0	120.0	109	72.0	70.0	38.0	50.0
CA	610.0	600.0	98	340.0	340.0	270.0	260.0
CO	400.0	420.0	105	190.0	190.0	210.0	230.0
ID	260.0	240.0	92	220.0	200.0	40.0	40.0
IL	70.0	68.0	97	60.0	59.0	10.0	9.0
IN	53.0	52.0	98	47.0	46.0	6.0	6.0
IA	235.0	260.0	111	175.0	180.0	60.0	80.0
KS	107.0	98.0	92	77.0	71.0	30.0	27.0
KY	37.0	37.0	100	30.0	30.0	7.0	7.0
MD	23.0	24.0	104	18.0	18.0	5.0	6.0
MI	81.0	82.0	101	60.0	62.0	21.0	20.0
MN	150.0	145.0	97	105.0	100.0	45.0	45.0
MO	78.0	82.0	105	70.0	72.0	8.0	10.0
MT	290.0	290.0	100	265.0	265.0	25.0	25.0
NE	95.0	85.0	89	70.0	67.0	25.0	18.0
NV	75.0	70.0	93	65.0	58.0	10.0	12.0
N ENG ¹	44.0	48.0	109	36.5	40.5	7.5	7.5
NM	130.0	130.0	100	110.0	112.0	20.0	18.0
NY	74.0	67.0	91	56.0	51.0	18.0	16.0
NC	21.0	22.0	105	17.0	17.0	4.0	5.0
ND	100.0	95.0	95	78.0	72.0	22.0	23.0
OH	141.0	139.0	99	114.0	111.0	27.0	28.0
OK	80.0	80.0	100	62.0	65.0	18.0	15.0
OR	215.0	220.0	102	144.0	147.0	71.0	73.0
PA	108.0	98.0	91	97.0	82.0	11.0	16.0
SD	380.0	355.0	93	285.0	285.0	95.0	70.0
TN	25.0	28.0	112	22.0	23.0	3.0	5.0
TX	1,050.0	1,000.0	95	810.0	770.0	240.0	230.0
UT	295.0	275.0	93	270.0	250.0	25.0	25.0
VA	72.0	81.0	113	56.0	65.0	16.0	16.0
WA	51.0	49.0	96	41.5	40.5	9.5	8.5
WV	34.0	35.0	103	28.0	30.0	6.0	5.0
WI	92.0	90.0	98	76.0	73.0	16.0	17.0
WY	460.0	440.0	96	350.0	340.0	110.0	100.0
Oth Sts ²	119.0	130.0	109	93.0	103.0	26.0	27.0
US	6,165.0	6,055.0	98	4,610.0	4,505.0	1,555.0	1,550.0

¹ N ENG includes CT, ME, MA, NH, RI, and VT.

² Individual state estimates not available for states not shown, but are included in Other States.

**Total Inventory, January 1, 2008
Top Five Sheep & Lamb Producing States**



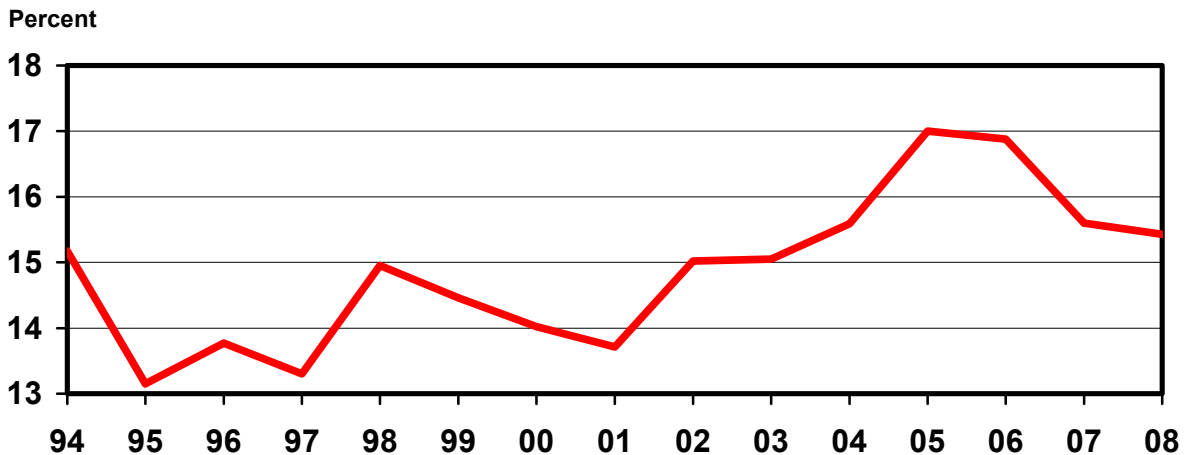
**Breeding Sheep and Lambs: Number by Class, State,
and United States, January 1, 2007-2008**

State	Breeding Sheep-One Year Old & Older				Replacement Lambs		Total Breeding Sheep and Lambs	
	Ewes		Rams		2007	2008	2007	2008
	2007	2008	2007	2008				
	<i>1,000 Head</i>	<i>1,000 Head</i>	<i>1,000 Head</i>	<i>1,000 Head</i>	<i>1,000 Head</i>	<i>1,000 Head</i>	<i>1,000 Head</i>	<i>1,000 Head</i>
AZ	58.0	59.0	4.0	4.0	10.0	7.0	72.0	70.0
CA	280.0	280.0	10.0	10.0	50.0	50.0	340.0	340.0
CO	152.0	150.0	6.0	6.0	32.0	34.0	190.0	190.0
ID	178.0	162.0	5.0	5.0	37.0	33.0	220.0	200.0
IL	47.0	46.0	3.0	4.0	10.0	9.0	60.0	59.0
IN	36.0	35.0	2.5	2.5	8.5	8.5	47.0	46.0
IA	141.0	148.0	8.0	8.0	26.0	24.0	175.0	180.0
KS	60.0	57.0	3.0	3.0	14.0	11.0	77.0	71.0
KY	22.0	23.0	2.0	2.0	6.0	5.0	30.0	30.0
MD	14.0	14.0	1.0	1.5	3.0	2.5	18.0	18.0
MI	44.0	46.0	3.0	3.0	13.0	13.0	60.0	62.0
MN	80.0	80.0	5.0	5.0	20.0	15.0	105.0	100.0
MO	55.0	57.0	4.0	4.0	11.0	11.0	70.0	72.0
MT	209.0	209.0	7.0	7.0	49.0	49.0	265.0	265.0
NE	58.0	55.0	3.0	3.0	9.0	9.0	70.0	67.0
NV	53.0	47.0	2.0	2.0	10.0	9.0	65.0	58.0
N ENG ¹	26.5	30.0	2.5	2.5	7.5	8.0	36.5	40.5
NM	90.0	89.0	5.0	6.0	15.0	17.0	110.0	112.0
NY	43.0	40.0	4.0	3.0	9.0	8.0	56.0	51.0
NC	12.5	13.0	1.0	1.0	3.5	3.0	17.0	17.0
ND	62.0	58.0	2.5	2.0	13.5	12.0	78.0	72.0
OH	88.0	86.0	6.0	5.0	20.0	20.0	114.0	111.0
OK	46.0	46.0	5.0	5.0	11.0	14.0	62.0	65.0
OR	115.0	118.0	7.0	7.0	22.0	22.0	144.0	147.0
PA	81.0	66.0	5.0	5.0	11.0	11.0	97.0	82.0
SD	240.0	237.0	9.0	9.0	36.0	39.0	285.0	285.0
TN	16.0	17.0	2.0	2.0	4.0	4.0	22.0	23.0
TX	665.0	630.0	40.0	40.0	105.0	100.0	810.0	770.0
UT	220.0	210.0	10.0	8.0	40.0	32.0	270.0	250.0
VA	41.0	50.0	3.0	3.0	12.0	12.0	56.0	65.0
WA	33.0	32.0	2.5	2.5	6.0	6.0	41.5	40.5
WV	23.0	24.0	1.0	1.0	4.0	5.0	28.0	30.0
WI	58.0	56.0	3.0	3.0	15.0	14.0	76.0	73.0
WY	280.0	272.0	10.0	9.0	60.0	59.0	350.0	340.0
Oth Sts ²	69.0	75.0	8.0	9.0	16.0	19.0	93.0	103.0
US	3,696.0	3,617.0	195.0	193.0	719.0	695.0	4,610.0	4,505.0

¹ N ENG includes CT, ME, MA, NH, RI, and VT.

² Individual state estimates not available for states not shown, but are included in Other States.

**U.S. Replacement Lambs, Percent of All Breeding Sheep
January 1**



Lamb Crop: Per 100 Ewes 1+, Number and Percent of Previous Year, by State, and United States, 2006-2007

State	Breeding Ewes 1 Year & Older Jan 1		Lambs per 100 Ewes 1+ Jan 1		Lamb Crop ¹		
	2006	2007	2006	2007	2006	2007	2007 as % of 2006
	<i>1,000 Head</i>	<i>1,000 Head</i>	<i>Percent</i>	<i>Percent</i>	<i>1,000 Head</i>	<i>1,000 Head</i>	<i>Percent</i>
AZ	57.0	58.0	77	72	44.0	42.0	95
CA	270.0	280.0	93	86	250.0	240.0	96
CO	148.0	152.0	128	118	190.0	180.0	95
ID	178.0	178.0	118	124	210.0	220.0	105
IL	48.0	47.0	127	132	61.0	62.0	102
IN	33.0	36.0	136	122	45.0	44.0	98
IA	132.0	141.0	159	163	210.0	230.0	110
KS	52.0	60.0	131	120	68.0	72.0	106
KY	22.5	22.0	111	141	25.0	31.0	124
MD	12.5	14.0	120	114	15.0	16.0	107
MI	46.0	44.0	122	143	56.0	63.0	113
MN	85.0	80.0	159	175	135.0	140.0	104
MO	52.0	55.0	138	145	72.0	80.0	111
MT	208.0	209.0	130	129	270.0	270.0	100
NE	65.0	58.0	125	138	81.0	80.0	99
NV	51.0	53.0	102	89	52.0	47.0	90
N ENG ²	30.5	26.5	105	136	32.0	36.0	113
NM	102.0	90.0	74	83	75.0	75.0	100
NY	41.0	43.0	124	105	51.0	45.0	88
NC	10.0	12.5	120	104	12.0	13.0	108
ND	59.0	62.0	136	129	80.0	80.0	100
OH	89.0	88.0	135	133	120.0	117.0	98
OK	46.0	46.0	109	109	50.0	50.0	100
OR	114.0	115.0	123	130	140.0	150.0	107
PA	73.0	81.0	126	104	92.0	84.0	91
SD	230.0	240.0	124	126	285.0	303.0	106
TN	15.0	16.0	107	119	16.0	19.0	119
TX	690.0	665.0	72	68	500.0	450.0	90
UT	210.0	220.0	117	107	245.0	235.0	96
VA	37.0	41.0	132	134	49.0	55.0	112
WA	33.0	33.0	161	158	53.0	52.0	98
WV	22.0	23.0	132	139	29.0	32.0	110
WI	56.0	58.0	139	133	78.0	77.0	99
WY	278.0	280.0	112	104	310.0	290.0	94
Oth Sts ³	65.5	69.0	98	101	64.0	70.0	109
US	3,661.0	3,696.0	111	110	4,065.0	4,050.0	100

¹ Lamb crop is defined as lambs born in the Eastern States and lambs docked or branded in the Western States.

² N ENG includes CT, ME, MA, NH, RI, and VT.

³ Individual state estimates not available for states not shown, but are included in Other States.

**Market Sheep and Lambs: Number by Weight Group, State,
and United States, January 1, 2007**

State	Market Lambs					Market Sheep	Total Market Sheep and Lambs
	Under 65 Pounds	65 to 84 Pounds	85 to 105 Pounds	Over 105 Pounds	Total		
	<i>1,000 Head</i>	<i>1,000 Head</i>	<i>1,000 Head</i>	<i>1,000 Head</i>	<i>1,000 Head</i>	<i>1,000 Head</i>	<i>1,000 Head</i>
AZ	10.0	6.0	11.0	9.0	36.0	2.0	38.0
CA	120.0	35.0	50.0	55.0	260.0	10.0	270.0
CO	1.0	20.0	37.0	150.0	208.0	2.0	210.0
ID	3.0	4.0	5.0	27.0	39.0	1.0	40.0
IL	5.0	1.0	2.0	1.0	9.0	1.0	10.0
IN	2.3	1.0	0.7	1.0	5.0	1.0	6.0
IA	9.0	9.0	18.0	20.0	56.0	4.0	60.0
KS	16.0	1.0	4.0	5.0	26.0	4.0	30.0
KY	2.8	1.8	1.0	0.4	6.0	1.0	7.0
MD	2.3	0.5	0.1	0.1	3.0	2.0	5.0
MI	3.0	3.0	7.0	7.0	20.0	1.0	21.0
MN	9.0	8.0	14.0	12.0	43.0	2.0	45.0
MO	2.5	1.5	1.5	2.0	7.5	0.5	8.0
MT	1.0	7.0	8.0	3.0	19.0	6.0	25.0
NE	3.0	3.0	7.0	11.0	24.0	1.0	25.0
NV	1.0	1.0	5.0	2.0	9.0	1.0	10.0
N ENG ¹	1.8	1.6	1.1	0.5	5.0	2.5	7.5
NM	3.0	6.0	7.0	2.0	18.0	2.0	20.0
NY	10.0	3.0	2.0	2.0	17.0	1.0	18.0
NC	2.1	0.7	0.4	0.3	3.5	0.5	4.0
ND	2.5	3.0	7.5	8.0	21.0	1.0	22.0
OH	9.0	8.0	6.0	3.0	26.0	1.0	27.0
OK	6.0	5.0	3.0	2.0	16.0	2.0	18.0
OR	11.0	11.0	25.0	21.0	68.0	3.0	71.0
PA	4.0	2.0	2.0	1.0	9.0	2.0	11.0
SD	5.0	8.0	30.0	48.0	91.0	4.0	95.0
TN	1.3	0.2	0.5	0.5	2.5	0.5	3.0
TX	90.0	30.0	50.0	55.0	225.0	15.0	240.0
UT	1.0	3.5	6.0	12.5	23.0	2.0	25.0
VA	6.0	2.5	5.0	1.5	15.0	1.0	16.0
WA	2.5	1.0	1.8	3.2	8.5	1.0	9.5
WV	2.0	1.0	1.0	1.0	5.0	1.0	6.0
WI	3.0	4.0	4.0	3.0	14.0	2.0	16.0
WY	2.0	4.0	45.0	57.0	108.0	2.0	110.0
Oth Sts ²	9.0	3.5	4.0	3.5	20.0	6.0	26.0
US	362.1	200.8	372.6	530.5	1,466.0	89.0	1,555.0

¹ N ENG includes CT, ME, MA, NH, RI, and VT.

² Individual state estimates not available for states not shown, but are included in Other States.

**Market Sheep and Lambs: Number by Weight Group, State,
and United States, January 1, 2008**

State	Market Lambs					Market Sheep	Total Market Sheep and Lambs
	Under 65 Pounds	65 to 84 Pounds	85 to 105 Pounds	Over 105 Pounds	Total		
	<i>1,000 Head</i>	<i>1,000 Head</i>	<i>1,000 Head</i>	<i>1,000 Head</i>	<i>1,000 Head</i>	<i>1,000 Head</i>	<i>1,000 Head</i>
AZ	11.0	5.0	11.0	19.0	46.0	4.0	50.0
CA	105.0	30.0	55.0	60.0	250.0	10.0	260.0
CO	4.0	28.0	41.0	155.0	228.0	2.0	230.0
ID	4.0	1.0	8.0	25.0	38.0	2.0	40.0
IL	3.0	3.5	1.5	0.5	8.5	0.5	9.0
IN	2.9	0.5	0.7	0.9	5.0	1.0	6.0
IA	7.0	7.0	30.0	32.0	76.0	4.0	80.0
KS	12.0	3.0	5.0	3.0	23.0	4.0	27.0
KY	3.5	0.5	1.5	0.5	6.0	1.0	7.0
MD	2.3	1.1	0.5	0.1	4.0	2.0	6.0
MI	3.0	5.0	4.0	7.0	19.0	1.0	20.0
MN	11.0	10.0	13.0	10.0	44.0	1.0	45.0
MO	3.5	2.5	2.0	1.0	9.0	1.0	10.0
MT	1.0	4.0	12.0	5.0	22.0	3.0	25.0
NE	2.0	3.0	5.0	7.0	17.0	1.0	18.0
NV	1.0	1.5	3.0	5.5	11.0	1.0	12.0
N ENG ¹	2.2	1.3	1.2	0.6	5.3	2.2	7.5
NM	4.0	5.0	5.0	2.0	16.0	2.0	18.0
NY	9.0	3.0	1.5	1.0	14.5	1.5	16.0
NC	2.2	1.0	0.5	0.5	4.2	0.8	5.0
ND	2.0	5.0	9.0	6.0	22.0	1.0	23.0
OH	9.0	8.0	7.0	3.0	27.0	1.0	28.0
OK	5.0	3.0	3.0	3.0	14.0	1.0	15.0
OR	10.0	10.0	27.0	23.0	70.0	3.0	73.0
PA	5.0	4.0	3.0	1.0	13.0	3.0	16.0
SD	7.0	9.0	14.0	38.0	68.0	2.0	70.0
TN	2.6	0.6	0.5	0.8	4.5	0.5	5.0
TX	85.0	35.0	50.0	50.0	220.0	10.0	230.0
UT	1.0	3.0	9.0	11.0	24.0	1.0	25.0
VA	8.0	2.0	3.0	2.0	15.0	1.0	16.0
WA	3.5	1.0	2.0	1.5	8.0	0.5	8.5
WV	1.5	1.5	1.5	0.5	5.0		5.0
WI	4.0	3.0	4.0	4.0	15.0	2.0	17.0
WY	2.0	5.0	40.0	50.0	97.0	3.0	100.0
Oth Sts ²	13.0	3.0	3.0	2.0	21.0	6.0	27.0
US	352.2	209.0	377.4	531.4	1,470.0	80.0	1,550.0

¹ N ENG includes CT, ME, MA, NH, RI, and VT.

² Individual state estimates not available for states not shown, but are included in Other States.

**Wool: Number of Sheep and Lambs Shorn, Weight per Fleece,
and Production by State, and United States, 2006-2007**

State	Sheep Shorn		Weight per Fleece		Production	
	2006	2007	2006	2007	2006	2007
	<i>1,000 Head</i>	<i>1,000 Head</i>	<i>Pounds</i>	<i>Pounds</i>	<i>1,000 Pounds</i>	<i>1,000 Pounds</i>
AZ	100.0	105.0	6.0	5.9	600	620
CA	490.0	460.0	7.1	6.7	3,500	3,100
CO	380.0	400.0	6.8	6.8	2,600	2,700
ID	215.0	200.0	9.2	9.4	1,980	1,880
IL	55.0	53.0	6.7	7.7	370	410
IN	44.0	40.0	6.3	6.3	275	250
IA	200.0	250.0	6.2	5.1	1,230	1,280
KS	63.0	74.0	7.1	6.2	449	460
KY	17.0	16.0	6.5	6.3	110	100
MD	15.0	15.0	7.0	6.8	105	102
MI	70.0	70.0	6.0	6.0	420	420
MN	140.0	150.0	6.5	6.5	910	980
MO	65.0	63.0	6.3	6.7	410	425
MT	255.0	255.0	9.2	9.2	2,350	2,350
NE	80.0	70.0	7.5	7.7	600	540
NV	56.0	51.0	9.3	9.7	520	495
N ENG ¹	37.0	38.0	7.0	7.0	259	266
NM	125.0	120.0	7.5	7.5	940	900
NY	51.0	48.0	7.1	6.7	360	320
NC	6.0	8.0	6.3	6.3	38	50
ND	80.0	72.0	8.7	8.7	695	625
OH	127.0	108.0	6.0	5.9	760	640
OK	40.0	45.0	6.3	5.6	252	250
OR	188.0	195.0	6.2	6.5	1,170	1,270
PA	60.0	64.0	6.7	6.7	400	430
SD	335.0	295.0	7.2	7.7	2,415	2,270
TN	16.0	17.0	6.3	6.2	100	105
TX	700.0	600.0	7.0	7.3	4,900	4,400
UT	260.0	255.0	9.0	8.5	2,350	2,180
VA	35.0	37.0	5.7	5.7	200	210
WA	41.0	37.0	7.3	7.6	300	280
WV	23.0	24.0	5.7	5.4	131	130
WI	73.0	72.0	7.1	7.1	520	510
WY	370.0	360.0	9.6	9.2	3,550	3,325
Oth Sts ²	40.0	38.0	6.3	6.8	250	260
US	4,852.0	4,705.0	7.4	7.3	36,019	34,533

¹ N ENG includes CT, ME, MA, NH, RI, and VT.

² Individual state estimates not available for states not shown, but are included in Other States.

Wool: Price and Value by State and United States, 2006-2007

State	Price per Pound		Value ¹	
	2006	2007	2006	2007
	<i>Dollars</i>	<i>Dollars</i>	<i>1,000 Dollars</i>	<i>1,000 Dollars</i>
AZ	0.35	0.34	210	211
CA	0.72	0.85	2,520	2,635
CO	0.75	1.00	1,950	2,700
ID	0.71	0.94	1,406	1,767
IL	0.28	0.26	104	107
IN	0.17	0.24	47	60
IA	0.24	0.31	295	397
KS	0.35	0.52	157	239
KY	0.29	0.30	32	30
MD	0.51	0.40	54	41
MI	0.45	0.36	189	151
MN	0.34	0.34	309	333
MO	0.42	0.73	172	310
MT	0.91	1.30	2,139	3,055
NE	0.36	0.40	216	216
NV	0.81	1.10	421	545
N ENG ²	0.55	0.55	142	146
NM	0.90	1.40	846	1,260
NY	0.25	0.20	90	64
NC	0.50	0.50	19	25
ND	0.60	0.65	417	406
OH	0.25	0.34	190	218
OK	0.40	0.50	101	125
OR	0.59	0.56	690	711
PA	0.30	0.31	120	133
SD	0.63	0.85	1,521	1,930
TN	0.35	0.45	35	47
TX	0.91	1.21	4,459	5,324
UT	0.71	0.90	1,669	1,962
VA	0.41	0.45	82	95
WA	0.75	1.10	225	308
WV	0.49	0.41	64	53
WI	0.27	0.40	140	204
WY	0.92	1.26	3,266	4,190
Oth Sts ³	0.85	1.00	213	260
US ⁴	0.68	0.88	24,510	30,258

¹ Production multiplied by marketing year average price. U.S. value is the summation of State values.

² N ENG includes CT, ME, MA, NH, RI, and VT.

³ Individual state estimates not available for states not shown, but are included in Other States.

⁴ U.S. Value may not add due to rounding.

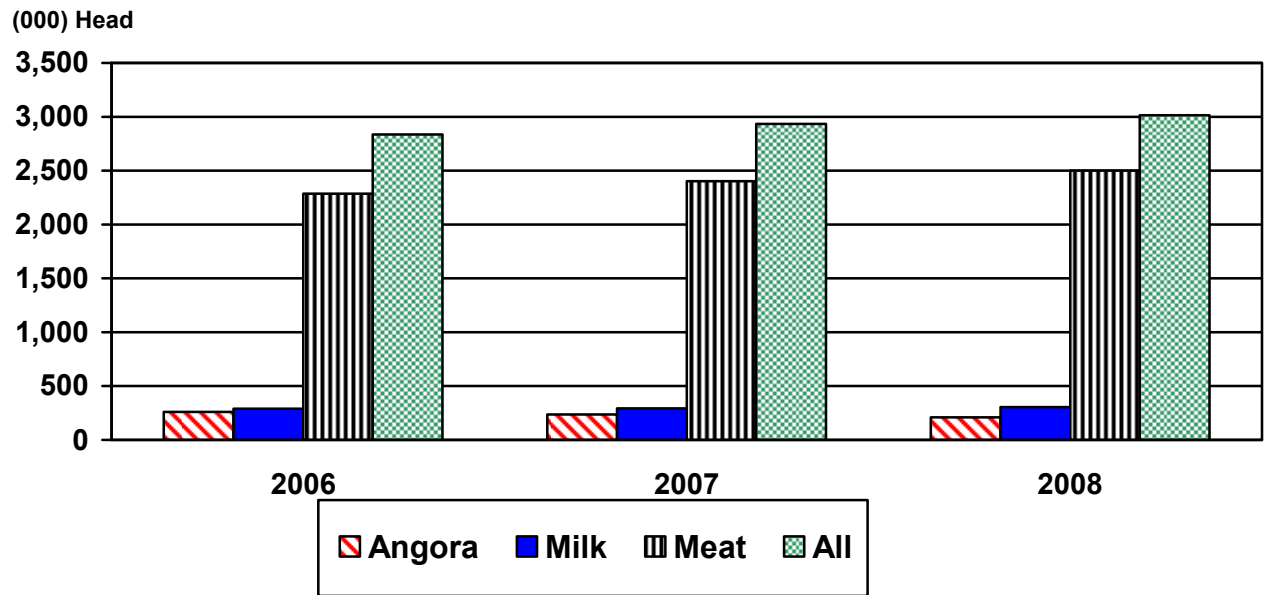
**All Goats: Number by Class, United States,
January 1, 2006-2008¹**

Class	2006	2007	2008	2008 as % of 2007
	<i>Head</i>	<i>Head</i>	<i>Head</i>	<i>Percent</i>
All Goats	2,837,000	2,934,000	3,015,000	103
Breeding All Goats	2,363,000	2,436,000	2,495,000	102
Replacement Kids - Under One Year	460,000	470,000	472,000	100
Does - One Year Old and Older	1,741,000	1,798,000	1,848,000	103
Bucks - One Year Old and Older	162,000	168,000	175,000	104
All, Market Goats & Kids	474,000	498,000	520,000	104
Kid Crop ²	1,839,000	1,917,000	1,938,000	101

¹ May not add due to rounding.

² Kid crop refers to kids born the previous year.

**U.S. Goat Inventory
January 1**



**Angora Goats: Number by Class, United States,
January 1, 2006-2008 ¹**

Class	2006	2007	2008	2008 as % of 2007
	<i>Head</i>	<i>Head</i>	<i>Head</i>	<i>Percent</i>
All Angora Goats	260,000	238,000	210,000	88
Breeding Angora Goats	226,000	207,000	182,000	88
Replacement Kids - Under One Year	37,000	34,000	28,000	82
Does - One Year Old and Older	177,000	162,000	143,000	88
Bucks - One Year Old and Older	12,000	11,000	11,000	100
Angora, Market Goats & Kids	34,000	31,000	28,000	90
Kid Crop ²	144,000	129,000	108,000	84

¹ May not add due to rounding.

² Kid crop refers to kids born the previous year.

**Milk Goats: Number by Class, United States,
January 1, 2006-2008 ¹**

Class	2006	2007	2008	2008 as % of 2007
	<i>Head</i>	<i>Head</i>	<i>Head</i>	<i>Percent</i>
All Milk Goats	290,000	294,000	305,000	104
Breeding Milk Goats	263,000	266,000	277,000	104
Replacement Kids - Under One Year	59,000	61,000	63,000	103
Does - One Year Old and Older	184,000	185,000	193,000	104
Bucks - One Year Old and Older	20,000	20,000	21,000	105
Milk, Market Goats & Kids	27,000	28,000	28,000	100
Kid Crop ²	203,000	214,000	220,000	103

¹ May not add due to rounding.

² Kid crop refers to kids born the previous year.

**Meat and Other Goats: Number by Class, United States,
January 1, 2006-2008 ¹**

Class	2006	2007	2008	2008 as % of 2007
	<i>Head</i>	<i>Head</i>	<i>Head</i>	<i>Percent</i>
All Meat & Other Goats	2,287,000	2,402,000	2,500,000	104
Breeding Meat & Other Goats	1,874,000	1,963,000	2,036,000	104
Replacement Kids - Under One Year	364,000	375,000	381,000	102
Does - One Year Old and Older	1,380,000	1,451,000	1,512,000	104
Bucks - One Year Old and Older	130,000	137,000	143,000	104
Meat & Other, Market Goats & Kids	413,000	439,000	464,000	106
Kid Crop ²	1,492,000	1,574,000	1,610,000	102

¹ May not add due to rounding.

² Kid crop refers to kids born the previous year.

Angora Goats: Number by State and United States, 2007-2008

State	2007		2008	
	<i>Head</i>		<i>Head</i>	
AZ		18,000		18,000
CA		3,000		4,000
CO		1,500		2,000
MI		1,000		
MN		1,300		1,500
MO		1,500		1,400
NE		1,300		1,500
N ENG ¹		1,000		1,300
NM		7,000		7,500
NY		1,000		
OH				1,200
OK		1,000		1,000
OR		1,300		1,400
TX		180,000		150,000
WA		1,000		1,000
WI		1,000		1,000
Oth Sts ^{2 3 4}		17,100		17,200
US		238,000		210,000

¹ N ENG includes CT, ME, MA, NH, RI, and VT.

² Individual state estimates not available for states not shown, but are included in Other States.

³ OH is included in Other States for 2007.

⁴ MI and NY are included in Other States for 2008.

**Mohair: Production, Price, and Value by Selected States,
United States, 2006-2007**

State	Goats Clipped		Average Clip per Goat		Production		Price per Pound		Value ¹	
	2006	2007	2006	2007	2006	2007	2006	2007	2006	2007
	<i>Head</i>	<i>Head</i>	<i>Pounds</i>	<i>Pounds</i>	<i>1,000 Pounds</i>	<i>1,000 Pounds</i>	<i>Dollars</i>	<i>Dollars</i>	<i>1,000 Dollars</i>	<i>1,000 Dollars</i>
AZ	16,000	15,000	5.0	5.0	80	75	1.30	2.00	104	150
CA	2,500	4,000	8.0	6.3	20	25	5.50	7.00	110	175
NM	7,000	6,000	6.3	6.7	44	40	4.00	4.50	176	180
TX	170,000	140,000	6.5	6.4	1,100	900	4.00	4.00	4,400	3,600
Oth Sts ²	20,500	20,000	5.4	5.0	110	100	2.00	2.00	220	200
US	216,000	185,000	6.3	6.2	1,354	1,140	3.70	3.78	5,010	4,305

¹ Production multiplied by marketing year average price. U.S. value is summation of State values.

² Individual state estimates not available for states not shown, but are included in Other States.

Milk Goats: Number by State and United States, 2007-2008

State	2007	2008
	<i>Head</i>	<i>Head</i>
AL	2,000	3,000
AZ	2,000	2,000
AR	4,700	5,900
CA	30,000	30,000
CO	8,000	9,000
FL	3,700	4,100
GA	3,000	4,000
ID	3,000	3,000
IL	4,500	4,900
IN	8,400	9,100
IA	17,700	19,000
KS	3,500	3,850
KY	5,300	5,900
LA	1,200	1,350
MD	3,000	3,100
MI	8,600	7,900
MN	6,400	6,600
MS	1,000	1,400
MO	11,000	13,000
MT	2,200	2,000
NE	3,000	2,500
NV	2,700	3,300
N ENG ¹	9,000	11,600
NJ	1,600	1,400
NM	3,000	4,000
NY	12,000	13,000
NC	5,000	6,000
OH	9,500	9,200
OK	8,000	8,000
OR	5,700	5,700
PA	11,800	13,000
SC	3,500	3,500
SD	1,100	1,000
TN	6,600	5,800
TX	30,000	25,000
UT	2,400	2,400
VA	3,800	3,900
WA	8,200	8,400
WV	1,700	1,800
WI	33,000	33,000
WY	1,800	1,700
Oth Sts ²	1,400	1,700
US	294,000	305,000

¹ N ENG includes CT, ME, MA, NH, RI, and VT.

² Individual state estimates not available for states not shown, but are included in Other States.

Meat and Other Goats: Number by State and United States, 2007-2008

State	2007	2008
	<i>Head</i>	<i>Head</i>
AL	48,000	59,000
AZ	10,000	11,000
AR	28,000	33,500
CA	100,000	100,000
CO	35,000	32,000
FL	65,000	71,000
GA	95,000	100,000
HI	5,500	5,900
ID	7,500	7,900
IL	16,500	19,600
IN	24,800	28,500
IA	28,000	30,400
KS	24,300	27,400
KY	74,000	81,400
LA	12,600	12,500
MD	11,500	13,500
MI	9,500	10,200
MN	12,300	11,000
MS	19,400	18,600
MO	68,500	80,000
MT	12,000	11,000
NE	20,000	22,000
NV	3,900	3,350
N ENG ¹	12,100	12,600
NJ	8,000	8,000
NM	15,000	15,000
NY	18,800	20,500
NC	70,000	82,000
ND	2,350	2,250
OH	28,000	31,500
OK	81,000	86,000
OR	23,200	24,800
PA	38,000	40,000
SC	45,500	45,000
SD	5,750	6,000
TN	117,000	118,000
TX	1,090,000	1,090,000
UT	9,000	11,000
VA	44,000	50,000
WA	24,000	25,000
WV	21,000	24,000
WI	12,000	12,000
WY	4,000	3,600
Oth Sts ²	2,000	3,000
US	2,402,000	2,500,000

¹ N ENG includes CT, ME, MA, NH, RI, and VT.

² Individual state estimates not available for states not shown, but are included in Other States.

Reliability of January 1 Sheep, Lamb, and Goat Estimates

Survey Procedures: A random sample of U.S. producers was surveyed to provide data for these estimates. Survey procedures ensured that all sheep and goat producers, regardless of size, had a chance to be included in the survey. Large producers were sampled more heavily than small operations. About 24,000 operators were contacted during the first half of January by mail, telephone and face-to-face personal interview and 86 percent of the reports were usable. Regardless of when operators responded, they were asked to report inventories as of January 1.

Estimation Procedures: These sheep and goat estimates were prepared by the Agricultural Statistics Board. National and State survey data were reviewed for reasonableness and with estimates from past years. A projected balance sheet for calendar year 2007 was also used. The balance sheet begins with the previous inventory estimate, adds estimates of births and imports, and subtracts estimates of slaughter, exports and deaths. This indicated ending inventory level is compared with the Agricultural Statistics Board estimate for reasonableness.

Revision Policy: Revisions to previous estimates are made to improve the current estimate. Previous year estimates are subject to revision when current estimates are made. Estimates will also be reviewed after data from the Department of Agriculture's five-year Census of Agriculture are available. No revisions will be made after that date.

Reliability: Since all operations raising sheep and goats are not included in the sample, survey estimates are subject to sampling variability. Survey results are also subject to non-sampling errors, such as omissions, duplications, and mistakes in reporting, recording, and processing the data. The effects of these errors cannot be measured directly. They are minimized through rigid quality controls in the data collection process and through a careful review of all reported data for consistency and reasonableness.

To assist users in evaluating reliability of the estimates in this report, the "**Root Mean Square Error**" is shown for selected sheep items in the following table. The "Root Mean Square Error" is a statistical measure based on past performance and is computed using the differences between the first and latest estimates. The "Root Mean Square Error" for sheep and lamb inventory estimates over the past 10 years is 0.9 percent. This means that chances are 2 out of 3 that the final estimate will not be above or below the current estimate of 6.06 million head by more than 0.9 percent. Chances are 9 out of 10 that the difference will not exceed 1.7 percent.

The "Root Mean Square Error" for sheep shorn over the past 10 years is 1.0 percent. This means that chances are 2 out of 3 that the final estimate will not be above or below the current estimate of 4.71 million head by more than 1.0 percent. Chances are 9 out of 10 that the difference will not exceed 1.9 percent.

Also shown in the table is a 10-year record showing the range between the first inventory estimate and the latest estimate. Using estimates for All Sheep and Lambs as an example, changes between the first inventory estimate and the latest estimate during the past 10 years have averaged 36,000 head, ranging from 0 to 209,000 head. The initial inventory estimate of All Sheep and Lambs has been below the latest estimate 4 times and above the latest estimate 4 times in the last 10 years.

For Sheep and Lambs Shorn, changes between the first inventory estimate and the latest estimate during the past 10 years have averaged 39,000 head, ranging from 0 to 148,000 head. The initial inventory estimate of Sheep and Lambs Shorn has been below the latest estimate 3 times and above 4 times in the last 10 years.

Reliability of U.S. January 1 Sheep and Lamb Estimates ¹

Item	Root Mean Square Error	90% Confidence Level		Difference Between First and Final Estimates ¹			Number of Years	
		Percent	(000) Head	Average	Smallest	Largest	First Above Final	First Below Final
	<i>Percent</i>	<i>Percent</i>	<i>1,000 Head</i>	<i>1,000 Head</i>	<i>1,000 Head</i>	<i>1,000 Head</i>	<i>Number</i>	<i>Number</i>
All Sheep & Lambs	0.9	1.7	102.0	36.2	0	209.1	4	4
Breeding Sheep	0.6	1.0	45.8	19.5	0	74.5	4	4
Lamb Crop	0.8	1.4	57.5	31.8	0	111.5	3	6
Sheep Shorn	1.0	1.9	88.0	39.1	0	148.0	4	3
	<i>Percent</i>	<i>Percent</i>	<i>1,000 Pounds</i>	<i>1,000 Pounds</i>	<i>1,000 Pounds</i>	<i>1,000 Pounds</i>	<i>Number</i>	<i>Number</i>
Wool Prod	1.1	1.9	672.4	278.8	0	1,095.0	5	2

¹ Based on data for the past 10 years.

Information Contacts

Listed below are the commodity specialists in the Livestock Branch of the National Agricultural Statistics Service to contact for additional information.

Dan Kerestes, Chief, Livestock Branch (202) 720-3570

Livestock Section

Shawn Clark, Head, Livestock Section (202) 720-3570
 Bruce Boess - Hogs and Pigs (202) 720-3106
 Jim Collom - Dairy Products (202) 690-3236
 Joe Gaynor - Dairy Products Prices (202) 690-2168
 Jason Hardegree - Milk Production and Milk Cows (202) 720-3278
 Benita Hodge - Livestock Slaughter (515) 284-4340
 Scott Hollis - Sheep and Goats (202) 720-4751
 Mike Miller - Cattle, Cattle on Feed (202) 720-3040

ACCESS TO REPORTS!!

For your convenience, there are several ways to obtain NASS reports, data products, and services:

INTERNET ACCESS

All NASS reports are available free of charge on the worldwide Internet. For access, connect to the Internet and go to the NASS Home Page at: www.nass.usda.gov.

E-MAIL SUBSCRIPTION

All NASS reports are available by subscription free of charge direct to your e-mail address. Starting with the NASS Home Page at www.nass.usda.gov, under the right navigation, *Receive reports by Email*, click on **National** or **State**. Follow the instructions on the screen.

PRINTED REPORTS OR DATA PRODUCTS

CALL OUR TOLL-FREE ORDER DESK: 800-999-6779 (U.S. and Canada)
Other areas, please call 703-605-6220 FAX: 703-605-6900
(Visa, MasterCard, check, or money order acceptable for payment.)

ASSISTANCE

For **assistance** with general agricultural statistics or further information about NASS or its products or services, contact the **Agricultural Statistics Hotline** at **800-727-9540**, 7:30 a.m. to 4:00 p.m. ET, or e-mail: nass@nass.usda.gov.

The U.S. Department of Agriculture (USDA) prohibits discrimination in all its programs and activities on the basis of race, color, national origin, age, disability, and where applicable, sex, marital status, familial status, parental status, religion, sexual orientation, genetic information, political beliefs, reprisal, or because all or a part of an individual's income is derived from any public assistance program. (Not all prohibited bases apply to all programs.) Persons with disabilities who require alternative means for communication of program information (Braille, large print, audiotape, etc.) should contact USDA's TARGET Center at (202) 720-2600 (voice and TDD).

To file a complaint of discrimination, write to USDA, Director, Office of Civil Rights, 1400 Independence Avenue, S.W., Washington, D.C. 20250-9410, or call (800) 795-3272 (voice) or (202) 720-6382 (TDD). USDA is an equal opportunity provider and employer.