
Released July 25, 2008, by the National Agricultural Statistics Service (NASS), Agricultural Statistics Board, U.S. Department of Agriculture. For information on *Sheep and Goats* call Everett Olbert at 202-720-4751, office hours 7:30 a.m. to 4:00 p.m. ET.

All Sheep and Lamb Inventory Down 3 Percent

All sheep and lamb inventory in the United States on July 1, 2008 totaled 7.35 million head, down 3 percent from July 1, 2007, and 5 percent below July 1, 2006. Breeding sheep inventory at 4.42 million head on July 1, 2008 was down 3 percent from July 1, 2007. Market sheep and lambs (including newborn lambs), at 2.93 million head, were down 4 percent from last July.

The breeding herd consists of 3.62 million ewes one year old and older, 180,000 rams one year old and older, and 620,000 replacement lambs (including newborn lambs). Market lamb inventory at 2.86 million head was comprised of 1.67 million lambs under 65 pounds, 595,000 lambs 65-84 pounds, 340,000 lambs 85-105 pounds, and 250,000 lambs over 105 pounds. Market sheep inventory was 75,000 head.

Lamb Crop Down 2 Percent

The 2008 lamb crop in the United States is expected to total 3.97 million head, down 2 percent from the 2007 lamb crop of 4.05 million head. Lambs born during January through June 2008 totaled 3.48 million head or 88 percent of the yearly total. An additional 490,000 head are expected to be born during the period July through December 2008.

Total Goat and Kid Inventory Up 4 Percent

All goat inventory on July 1, 2008 totaled 3.73 million head, up 4 percent from the previous July number. **Breeding goat inventory** totaled 2.81 million head, up 4 percent from July 2007. **All market goats and kids** totaled 925,000 head, up 2 percent from the previous July. On July 1, 2008 meat and all other goats totaled 3.15 million head, up 5 percent from July 2007. Milk goat inventory was up 4 percent increasing to 350,000 head while **angora goat** numbers fell 12 percent to 230,000 head. The 2008 **kid crop** is expected to total 2.03 million head, up 5 percent from the 2007 kid crop of 1.94 million head.

**Sheep and Lambs: Number by Class,
United States, July 1, 2006-2008**

| Class | 2006 | 2007 | 2008 | 2008 as % of 2007 |
|----------------------------------|-------------------|-------------------|-------------------|----------------------|
| | <i>1,000 Head</i> | <i>1,000 Head</i> | <i>1,000 Head</i> | <i>Percent</i> |
| All Sheep and Lambs | 7,770 | 7,600 | 7,350 | 97 |
| Breeding Sheep and Lambs | 4,635 | 4,540 | 4,420 | 97 |
| Replacement Lambs | | | | |
| Under One Year Old | 670 | 645 | 620 | 96 |
| Ewes - One Year Old and Older | 3,780 | 3,710 | 3,620 | 98 |
| Rams - One Year Old and Older | 185 | 185 | 180 | 97 |
| Market | 3,135 | 3,060 | 2,930 | 96 |

**Market Sheep and Lambs Inventory: By Weight Class,
United States, July 1, 2006-2008**

| Period | Market Lambs | | | | | Market Sheep | Market Sheep and Lambs |
|--------|-----------------------|--------------------|---------------------|-----------------------|-------------------|-------------------|------------------------------|
| | Under 65 Pounds | 65 to 84 lbs | 85 to 105 lbs | Over 105 Pounds | Total | | |
| | <i>1,000 Head</i> | <i>1,000 Head</i> | <i>1,000 Head</i> | <i>1,000 Head</i> | <i>1,000 Head</i> | <i>1,000 Head</i> | <i>1,000 Head</i> |
| 2006 | 1,795 | 630 | 370 | 260 | 3,055 | 80 | 3,135 |
| 2007 | 1,760 | 625 | 360 | 250 | 2,995 | 65 | 3,060 |
| 2008 | 1,670 | 595 | 340 | 250 | 2,855 | 75 | 2,930 |

**Lamb Crop: Number and Percent of Total by
Six-Month Period, United States, 2008¹**

| Period | Number | % of Total |
|----------------------|-------------------|----------------|
| | <i>1,000 Head</i> | <i>Percent</i> |
| Jan-Jun ² | 3,480 | 87.7 |
| Jul-Dec ³ | 490 | 12.3 |
| Total | 3,970 | 100.0 |

¹ Lamb crop is lambs born in the Eastern States and lambs docked or branded in the Western States.

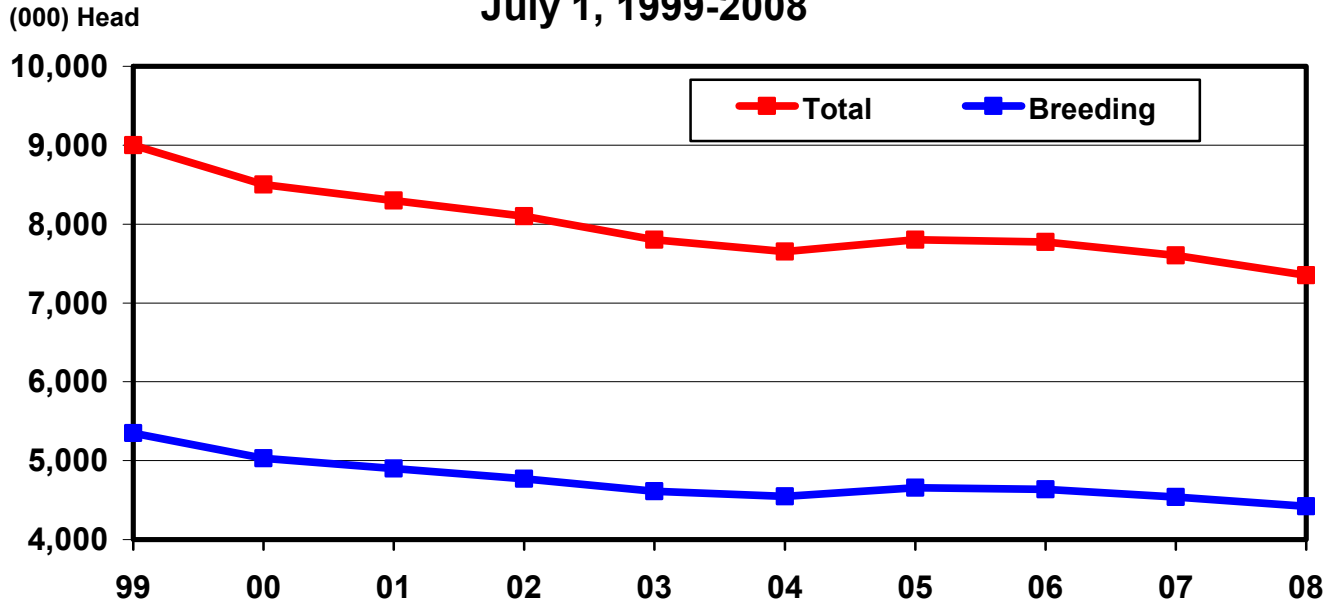
² Lambs born alive January 1, 2008 through June 30, 2008.

³ Lambs expected to be born July 1, 2008 through December 21, 2008.

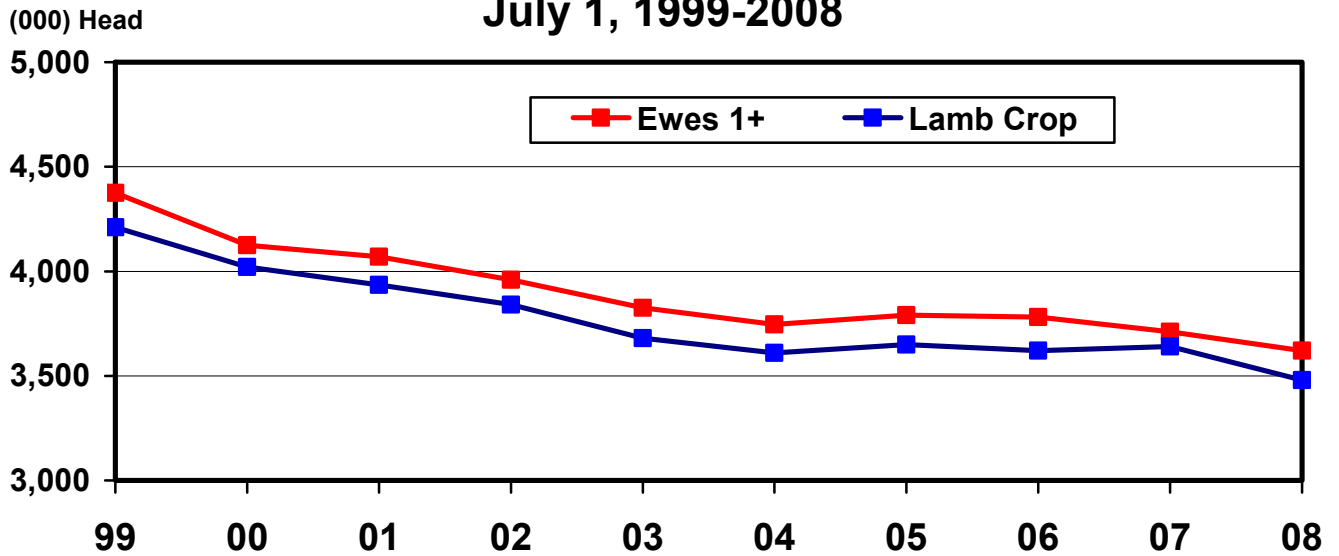
Lamb Crop: Per 100 Ewes 1+, United States, 2006-2008

| Period | Lamb Crop | Breeding Ewes 1+ Jan 1 | Lambs per 100 Ewes 1+ Jan 1 |
|--------|-------------------|---------------------------|--------------------------------|
| | <i>1,000 Head</i> | <i>1,000 Head</i> | <i>Number</i> |
| 2006 | 4,065 | 3,661 | 111 |
| 2007 | 4,050 | 3,696 | 110 |
| 2008 | 3,970 | 3,617 | 110 |

U.S. Sheep and Lambs July 1, 1999-2008



U.S. Total Breeding Ewes 1+ and Lamb Crop July 1, 1999-2008



Goats: Number by Class, United States, July 1, 2006-2008

| Item | Total | Breeding | Market | Kid Crop ¹ |
|--------|-------------|-------------|-------------|-----------------------|
| | <i>Head</i> | <i>Head</i> | <i>Head</i> | <i>Head</i> |
| 2006 | | | | |
| Angora | 285,000 | 225,000 | 60,000 | 129,000 |
| Milk | 320,000 | 270,000 | 50,000 | 214,000 |
| Meat | 2,860,000 | 2,080,000 | 780,000 | 1,574,000 |
| All | 3,465,000 | 2,575,000 | 890,000 | 1,917,000 |
| 2007 | | | | |
| Angora | 260,000 | 205,000 | 55,000 | 108,000 |
| Milk | 335,000 | 285,000 | 50,000 | 220,000 |
| Meat | 3,000,000 | 2,200,000 | 800,000 | 1,610,000 |
| All | 3,595,000 | 2,690,000 | 905,000 | 1,938,000 |
| 2008 | | | | |
| Angora | 230,000 | 180,000 | 50,000 | 100,000 |
| Milk | 350,000 | 295,000 | 55,000 | 230,000 |
| Meat | 3,150,000 | 2,330,000 | 820,000 | 1,700,000 |
| All | 3,730,000 | 2,805,000 | 925,000 | 2,030,000 |

¹ Kid Crop for 2006 and 2007 refers to the actual kids born during 2006 and 2007. Kid Crop for 2008 is the kids born alive between January 1 and June 30, 2008 plus the kids expected to be born July through December 2008.

Kid Crop: Per 100 Does 1+, United States, 2006-2008

| Period | Kid Crop | Breeding Does 1+ Jan 1 | Kids per 100 Does 1+ Jan 1 |
|--------|-------------------|---------------------------|-------------------------------|
| | <i>1,000 Head</i> | <i>1,000 Head</i> | <i>Number</i> |
| 2006 | 1,917,000 | 1,741,000 | 110 |
| 2007 | 1,938,000 | 1,798,000 | 108 |
| 2008 | 2,030,000 | 1,848,000 | 110 |

Reliability of July 1 Sheep and Goats Estimates

Survey Procedures: A random sample of U.S. producers was surveyed to provide data for these estimates. Survey procedures ensured that all sheep and goat producers, regardless of size, had a chance to be included in the survey. Data were collected during the first half of June from about 38,000 operations. These operators were contacted by face-to-face personal interviews. About 4,600 producers and feedlots were contacted during the first half of July by mail, telephone, and face-to-face personal interviews. Operators were asked to report inventories as of the first of the month and lamb crop for the entire year of 2008.

Estimation Procedures: These sheep and goat estimates were prepared by the Agricultural Statistics Board. National and State survey data were reviewed for reasonableness and with estimates from past years. A projected balance sheet for calendar year 2008 was also used. The balance sheet begins with the previous inventory estimate, adds estimates of births and imports, and subtracts estimates of slaughter, exports and deaths. This indicated ending inventory level is compared with the Agricultural Statistics Board estimate for reasonableness.

Revision Policy: Revisions to previous estimates are made to improve the current estimate. Previous year estimates are subject to revision when current estimates are made. Estimates will also be reviewed after data from the Department of Agriculture's five-year Census of Agriculture are available. No revisions will be made after that date.

Reliability: Since all operations raising sheep and goats are not included in the sample, survey estimates are subject to sampling variability. Survey results are also subject to non-sampling errors, such as omissions, duplications, and mistakes in reporting, recording, and processing the data. The effects of these errors cannot be measured directly. They are minimized through rigid quality controls in the data collection process and through a careful review of all reported data for consistency and reasonableness.

To assist users in evaluating reliability of the estimates in this report, the "**Root Mean Square Error**" is shown for lamb crop in the following table. The "Root Mean Square Error" is a statistical measure based on past performance and is computed using the differences between the first and latest estimates. The "Root Mean Square Error" for lamb crop estimates over the past 10 years is 1.5 percent. This means that chances are 2 out of 3 that the final estimate will not be above or below the current estimate of 3.97 million head by more than 1.5 percent. Chances are 9 out of 10 that the difference will not exceed 2.8 percent.

Also shown in the table is a 10-year record showing the range between the first inventory estimate and the latest estimate. Estimate changes for Lamb Crop between the first inventory estimate and the latest estimate during the past 10 years have averaged 53,400 head, ranging from 3,000 to 132,000 head. The initial inventory estimate of Lamb Crop has been below the latest estimate 7 times and above the latest estimate 3 times in the last 10 years.

Reliability of U.S. July 1 Sheep and Lamb Estimates ¹

| Item | Root Mean Square Error | 90% Confidence Level | | Difference Between First and Final Estimates | | | Number of Years | |
|-----------|------------------------|----------------------|-------------------|--|-------------------|-------------------|-------------------|-------------------|
| | | Percent | Head | Average | Smallest | Largest | First Above Final | First Below Final |
| | <i>Percent</i> | <i>Percent</i> | <i>1,000 Head</i> | <i>1,000 Head</i> | <i>1,000 Head</i> | <i>1,000 Head</i> | <i>Number</i> | <i>Number</i> |
| Lamb Crop | 1.5 | 2.8 | 111 | 53 | 3 | 132 | 3 | 7 |

¹ Based on data for the past 10 years.

Information Contacts

Listed below are the commodity specialists in the Livestock Branch of the National Agricultural Statistics Service to contact for additional information.

Dan Kerestes, Chief, Livestock Branch (202) 720-3570

Livestock Section

Scott Hollis, Head, Livestock Section (202) 690-2424
 Jim Collom - Dairy Products (202) 690-3236
 Joe Gaynor - Dairy Products Prices (202) 690-2168
 Jason Hardegree - Cattle, Cattle on Feed (202) 720-3040
 Benita Hodge - Livestock Slaughter (515) 284-4340
 Everett Olbert - Sheep and Goats (202) 720-4751
 Mike Miller - Milk Production and Milk Cows (202) 720-3278
 Nick Streff - Hogs and Pigs (202) 720-3106

ACCESS TO REPORTS!!

For your convenience, there are several ways to obtain NASS reports, data products, and services:

INTERNET ACCESS

All NASS reports are available free of charge on the worldwide Internet. For access, connect to the Internet and go to the NASS Home Page at: **www.nass.usda.gov**.

E-MAIL SUBSCRIPTION

All NASS reports are available by subscription free of charge direct to your e-mail address. Starting with the NASS Home Page at **www.nass.usda.gov**, under the right navigation, *Receive reports by Email*, click on **National** or **State**. Follow the instructions on the screen.

PRINTED REPORTS OR DATA PRODUCTS

CALL OUR TOLL-FREE ORDER DESK: 800-999-6779 (U.S. and Canada)
Other areas, please call 703-605-6220 FAX: 703-605-6900
(Visa, MasterCard, check, or money order acceptable for payment.)

ASSISTANCE

For **assistance** with general agricultural statistics or further information about NASS or its products or services, contact the **Agricultural Statistics Hotline** at **800-727-9540**, 7:30 a.m. to 4:00 p.m. ET, or e-mail: **nass@nass.usda.gov**.

The U.S. Department of Agriculture (USDA) prohibits discrimination in all its programs and activities on the basis of race, color, national origin, age, disability, and where applicable, sex, marital status, familial status, parental status, religion, sexual orientation, genetic information, political beliefs, reprisal, or because all or a part of an individual's income is derived from any public assistance program. (Not all prohibited bases apply to all programs.) Persons with disabilities who require alternative means for communication of program information (Braille, large print, audiotape, etc.) should contact USDA's TARGET Center at (202) 720-2600 (voice and TDD).

To file a complaint of discrimination, write to USDA, Director, Office of Civil Rights, 1400 Independence Avenue, S.W., Washington, D.C. 20250-9410, or call (800) 795-3272 (voice) or (202) 720-6382 (TDD). USDA is an equal opportunity provider and employer.