

Sheep and Goats

Released January 30, 2009, by the National Agricultural Statistics Service (NASS), Agricultural Statistics Board, U.S. Department of Agriculture. For information on *Sheep and Goats* call Everett Olbert at 202-720-4751, office hours 7:30 a.m. to 4:00 p.m. ET.

Total Sheep and Lamb Inventory Down 3 Percent

All sheep and lamb inventory in the United States on January 1, 2009, totaled 5.75 million head, down 3 percent from 2008.

Breeding sheep inventory decreased to 4.25 million head on January 1, 2009, down 4 percent from 4.43 million head on January 1, 2008. Ewes one year old and older, at 3.40 million head, were 4 percent below last year.

Market sheep and lambs on January 1, 2009, totaled 1.50 million head, down 1 percent from January 1, 2008. Market lambs comprised 95 percent of the total marketings. Twenty-three percent were lambs under 65 pounds, 11 percent were 65 - 84 pounds, 21 percent were 85 - 105 pounds, and 39 percent were over 105 pounds. Market sheep comprised the remaining 5 percent of total marketings.

The 2008 lamb crop of 3.71 million head, was down 5 percent from 2007. The 2008 lambing rate was 105 lambs per 100 ewes one year old and older on January 1, 2008, down 3 percent from 2007.

Shorn wool production in the United States during 2008 was 33.0 million pounds, down 5 percent from 2007. Sheep and lambs shorn totaled 4.43 million head, down 5 percent from 2007. The average price paid for wool sold in 2008 was \$0.99 per pound for a total value of 32.5 million dollars, up 7 percent from 30.2 million dollars in 2007.

Total Goat and Kid Inventory Down 2 Percent

All goat inventory in the United States on January 1, 2009, totaled 3.07 million head, down 2 percent from 2008. **Breeding goat inventory** totaled 2.54 million head down 2 percent from 2008. **All market goats and kids** totaled 528,000 head, up 1 percent from a year ago. On January 1, 2009 **meat and all other goats** totaled 2.55 million head, down 2 percent from 2008. **Milk goat** inventory increased 4 percent to 335,000 head while **angora goats** were down 10 percent totaling 185,000 head. The 2008 **kid crop** totaled 1.96 million head for all goats, down 2 percent from 2007.

Mohair production in the United States during 2008 was 1.18 million pounds. **Goats and kids clipped** totaled 193,500 head. Average weight per clip was 6.10 pounds. **Mohair price** was \$3.31 per pound with a value of 3.91 million dollars.

Special Note

Data from the 2007 Census of Agriculture were used in the review process for the 2009 and 2008 estimates included in this publication. The impact of the 5-year historical revision process may cause a discontinuity in the data series. January 1, 2008 and prior estimates contained in this publication will be republished in the *Sheep and Goats, Final Estimates 2004-2008* publication which is scheduled for release on March 5, 2009.

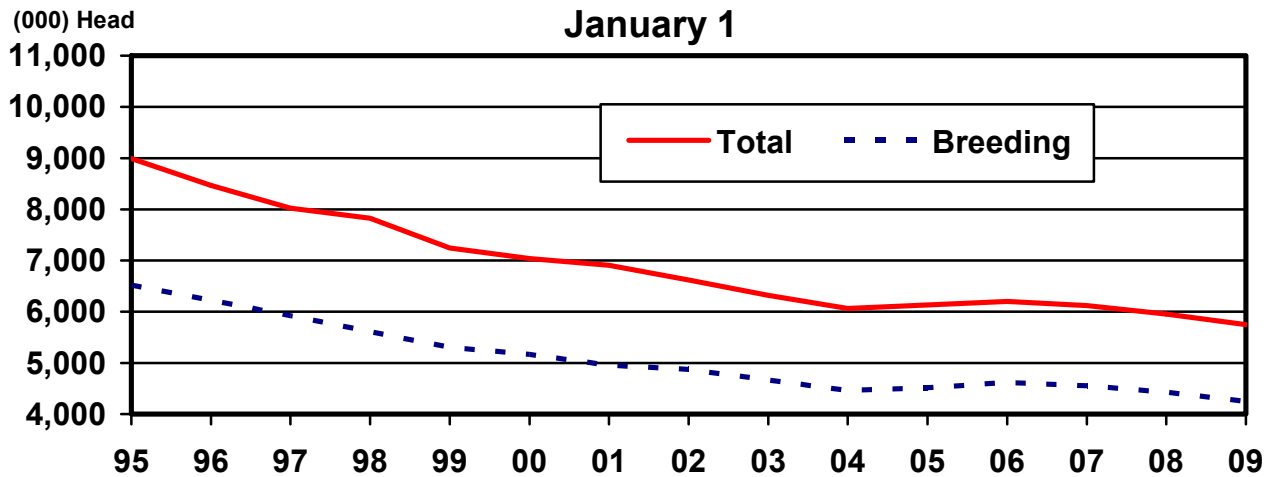
Contents

	Page
Sheep and Lambs	
U.S. Inventory by Class, 2008-2009	1
U.S. Wool Production, Price, and Value, 2007-2008	2
Inventory and Class by State, 2008-2009	3
Sheep Shorn and Wool Production by State, 2007-2008	8
Wool Price and Value by State, 2007-2008	9
Goats	
U.S. All Goat Inventory by Class 2008-2009	10
U.S. Angora Goat Inventory by Class 2008-2009	11
U.S. Milk Goat Inventory by Class 2008-2009	11
U.S. Meat Goat Inventory by Class 2008-2009	11
Angora Goat Inventory by State 2008-2009	12
Mohair Production, Price, and Value 2008-2009	12
Milk Goat Inventory by State 2008-2009	13
Meat and Other Goat Inventory by State 2008-2009	14
Reliability Statement	15
Information Contacts	16

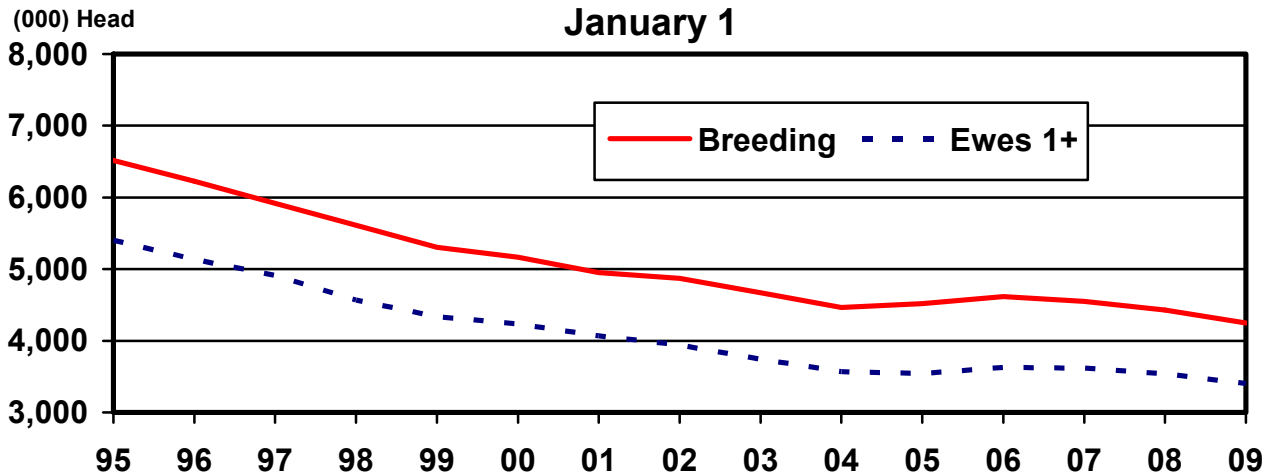
**Sheep and Lambs: Number by Class,
United States, January 1, 2008-2009**

Class	2008	2009	2009 as % of 2008
	<i>1,000 Head</i>	<i>1,000 Head</i>	<i>Percent</i>
All Sheep and Lambs	5,950	5,747	97
Breeding Sheep and Lambs	4,432	4,247	96
Replacement Lambs			
Under One Year Old	697	649	93
Ewes - One Year Old and Older	3,540	3,404	96
Rams - One Year Old and Older	195	195	100
Market	1,519	1,500	99

**U.S. Sheep and Lambs Inventory
January 1**



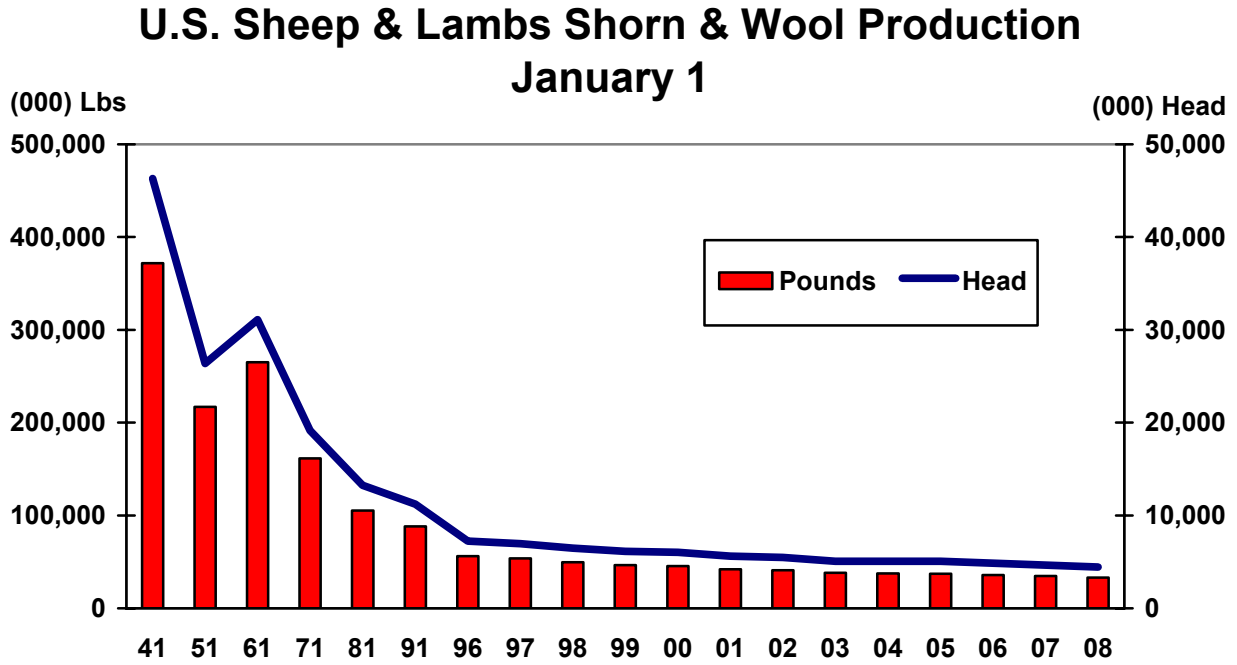
**U.S. Total Breeding and Ewes 1+
January 1**



Wool: Production, Price, and Value, United States, 2007-2008

Year	Sheep Shorn ¹	Weight per Fleece	Shorn Wool Production	Price per Pound	Value
	<i>1,000 Head</i>	<i>Pounds</i>	<i>1,000 Pounds</i>	<i>Dollars</i>	<i>1,000 Dollars</i>
2007	4,657	7.46	34,723	0.87	30,242
2008	4,434	7.43	32,963	0.99	32,486

¹ Includes shearing at commercial feeding yards.



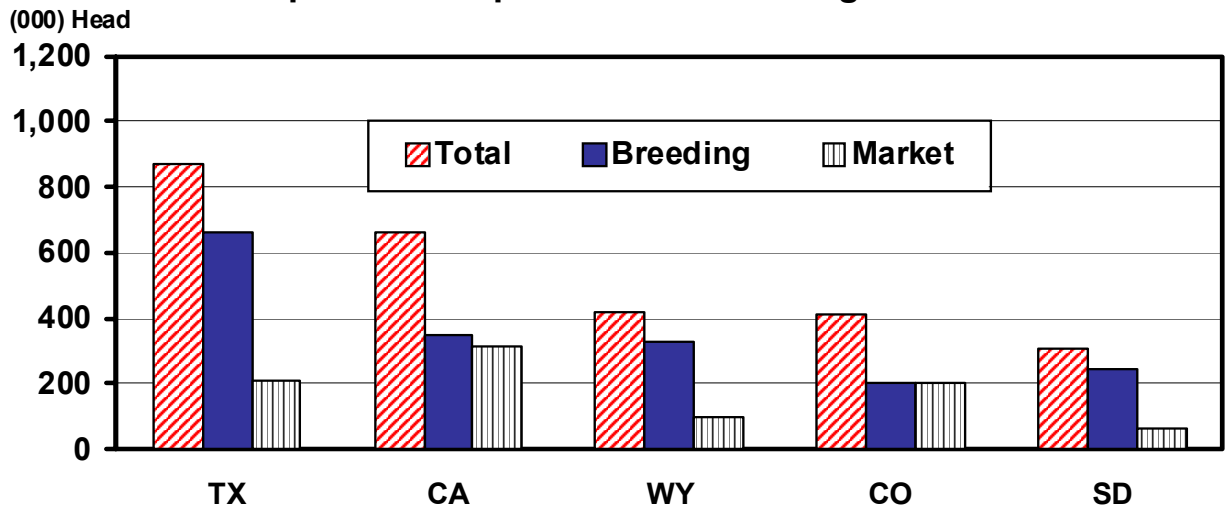
**All Sheep and Lambs: Number by Class,
State, and United States, January 1, 2008-2009**

State	All Sheep and Lambs			Total Breeding		Total Market	
	2008	2009	2009 as % of 2008	2008	2009	2008	2009
	<i>1,000 Head</i>	<i>1,000 Head</i>	<i>Percent</i>	<i>1,000 Head</i>	<i>1,000 Head</i>	<i>1,000 Head</i>	<i>1,000 Head</i>
AZ	155.0	150.0	97	90.0	90.0	65.0	60.0
CA	620.0	660.0	106	340.0	345.0	280.0	315.0
CO	420.0	410.0	98	210.0	205.0	210.0	205.0
ID	235.0	210.0	89	197.0	178.0	38.0	32.0
IL	60.0	58.0	97	50.0	50.0	10.0	8.0
IN	52.0	50.0	96	46.0	43.0	6.0	7.0
IA	225.0	200.0	89	162.0	145.0	63.0	55.0
KS	90.0	80.0	89	67.0	57.0	23.0	23.0
KY	37.0	40.0	108	30.0	33.0	7.0	7.0
MD	24.0	24.0	100	18.0	18.0	6.0	6.0
MI	82.0	78.0	95	63.0	60.0	19.0	18.0
MN	145.0	140.0	97	106.0	102.0	39.0	38.0
MO	82.0	83.0	101	72.0	74.0	10.0	9.0
MT	270.0	255.0	94	245.0	230.0	25.0	25.0
NE	80.0	71.0	89	64.0	57.0	16.0	14.0
NV	70.0	67.0	96	59.0	57.0	11.0	10.0
N ENG ¹	50.0	48.0	96	42.5	41.0	7.5	7.0
NM	130.0	120.0	92	112.0	103.0	18.0	17.0
NY	65.0	62.0	95	53.0	50.0	12.0	12.0
NC	27.0	28.0	104	22.0	24.0	5.0	4.0
ND	93.0	88.0	95	72.0	67.0	21.0	21.0
OH	125.0	130.0	104	100.0	100.0	25.0	30.0
OK	80.0	80.0	100	65.0	63.0	15.0	17.0
OR	220.0	220.0	100	149.0	150.0	71.0	70.0
PA	98.0	100.0	102	82.0	84.0	16.0	16.0
SD	340.0	305.0	90	270.0	245.0	70.0	60.0
TN	30.0	34.0	113	24.0	27.0	6.0	7.0
TX	960.0	870.0	91	730.0	660.0	230.0	210.0
UT	280.0	290.0	104	250.0	260.0	30.0	30.0
VA	81.0	75.0	93	65.0	62.0	16.0	13.0
WA	52.0	53.0	102	44.0	43.0	8.0	10.0
WV	35.0	33.0	94	30.0	28.0	5.0	5.0
WI	90.0	85.0	94	73.0	68.0	17.0	17.0
WY	425.0	420.0	99	330.0	325.0	95.0	95.0
Oth Sts ²	122.0	130.0	107	99.0	103.0	23.0	27.0
US	5,950.0	5,747.0	97	4,431.5	4,247.0	1,518.5	1,500.0

¹ N ENG includes CT, ME, MA, NH, RI, and VT.

² Individual state estimates not available for states not shown, but are included in Other States.

**Total Inventory, January 1, 2009
Top Five Sheep & Lamb Producing States**



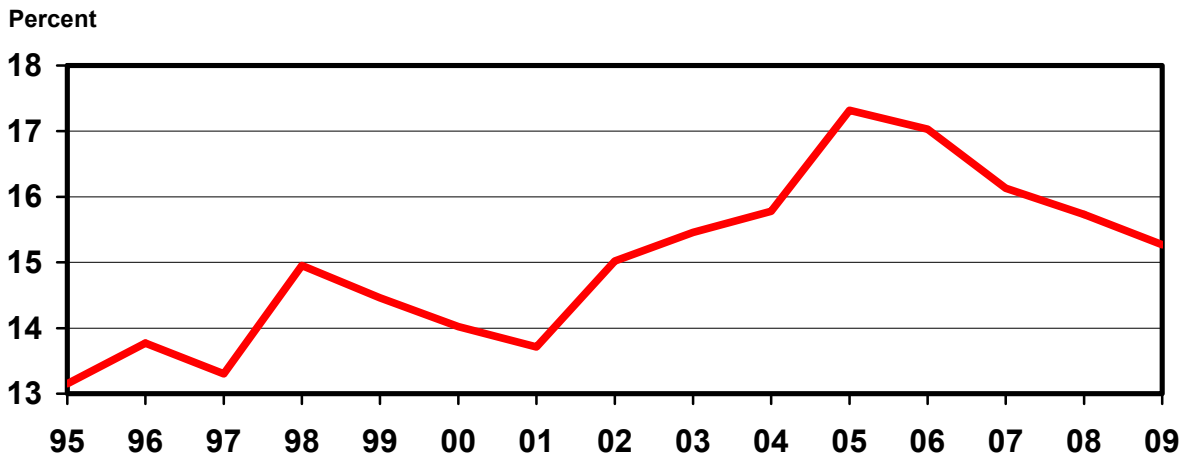
**Breeding Sheep and Lambs: Number by Class, State,
and United States, January 1, 2008-2009**

State	Breeding Sheep-One Year Old & Older				Replacement Lambs		Total Breeding Sheep and Lambs	
	Ewes		Rams		2008	2009	2008	2009
	2008	2009	2008	2009				
	<i>1,000 Head</i>	<i>1,000 Head</i>	<i>1,000 Head</i>	<i>1,000 Head</i>	<i>1,000 Head</i>	<i>1,000 Head</i>	<i>1,000 Head</i>	<i>1,000 Head</i>
AZ	76.0	75.0	6.0	6.0	8.0	9.0	90.0	90.0
CA	285.0	290.0	10.0	10.0	45.0	45.0	340.0	345.0
CO	170.0	165.0	6.0	6.0	34.0	34.0	210.0	205.0
ID	162.0	148.0	5.0	5.0	30.0	25.0	197.0	178.0
IL	35.0	35.0	4.0	3.0	11.0	12.0	50.0	50.0
IN	35.0	34.0	2.5	2.5	8.5	6.5	46.0	43.0
IA	130.0	120.0	8.0	7.0	24.0	18.0	162.0	145.0
KS	53.0	47.0	3.0	3.0	11.0	7.0	67.0	57.0
KY	23.0	25.0	2.0	2.0	5.0	6.0	30.0	33.0
MD	14.0	14.0	1.5	1.0	2.5	3.0	18.0	18.0
MI	48.0	47.0	3.0	3.0	12.0	10.0	63.0	60.0
MN	86.0	83.0	5.0	5.0	15.0	14.0	106.0	102.0
MO	57.0	58.0	4.0	4.0	11.0	12.0	72.0	74.0
MT	190.0	180.0	7.0	7.0	48.0	43.0	245.0	230.0
NE	52.0	46.0	3.0	3.0	9.0	8.0	64.0	57.0
NV	46.0	44.0	2.0	2.0	11.0	11.0	59.0	57.0
N ENG ¹	32.0	31.5	2.5	2.5	8.0	7.0	42.5	41.0
NM	89.0	83.0	6.0	5.0	17.0	15.0	112.0	103.0
NY	43.0	40.0	3.0	3.0	7.0	7.0	53.0	50.0
NC	16.0	17.0	1.0	2.0	5.0	5.0	22.0	24.0
ND	60.0	55.0	2.0	2.0	10.0	10.0	72.0	67.0
OH	75.0	77.0	5.0	5.0	20.0	18.0	100.0	100.0
OK	46.0	46.0	5.0	5.0	14.0	12.0	65.0	63.0
OR	120.0	121.0	7.0	7.0	22.0	22.0	149.0	150.0
PA	63.0	64.0	5.0	6.0	14.0	14.0	82.0	84.0
SD	220.0	205.0	9.0	8.0	41.0	32.0	270.0	245.0
TN	18.0	20.0	2.0	2.0	4.0	5.0	24.0	27.0
TX	590.0	520.0	40.0	40.0	100.0	100.0	730.0	660.0
UT	210.0	220.0	8.0	9.0	32.0	31.0	250.0	260.0
VA	50.0	48.0	3.0	3.0	12.0	11.0	65.0	62.0
WA	36.0	35.0	2.0	2.0	6.0	6.0	44.0	43.0
WV	24.0	23.0	1.0	1.0	5.0	4.0	30.0	28.0
WI	56.0	54.0	3.0	3.0	14.0	11.0	73.0	68.0
WY	260.0	260.0	9.0	10.0	61.0	55.0	330.0	325.0
Oth Sts ²	70.0	73.0	9.0	10.0	20.0	20.0	99.0	103.0
US	3,540.0	3,403.5	194.5	195.0	697.0	648.5	4,431.5	4,247.0

¹ N ENG includes CT, ME, MA, NH, RI, and VT.

² Individual state estimates not available for states not shown, but are included in Other States.

**U.S. Replacement Lambs, Percent of All Breeding Sheep
January 1**



Lamb Crop: Per 100 Ewes 1+, Number and Percent of Previous Year, by State, and United States, 2007-2008

State	Breeding Ewes 1 Year & Older Jan 1		Lambs per 100 Ewes 1+ Jan 1		Lamb Crop ¹		
	2007	2008	2007	2008	2007	2008	2008 as % of 2007
	<i>1,000 Head</i>	<i>1,000 Head</i>	<i>Number</i>	<i>Number</i>	<i>1,000 Head</i>	<i>1,000 Head</i>	<i>Percent</i>
AZ	70.0	76.0	71	62	50.0	47.0	94
CA	290.0	285.0	83	81	240.0	230.0	96
CO	162.0	170.0	130	124	210.0	210.0	100
ID	166.0	162.0	120	117	200.0	190.0	95
IL	38.0	35.0	132	129	50.0	45.0	90
IN	36.0	35.0	119	117	43.0	41.0	95
IA	131.0	130.0	149	141	195.0	183.0	94
KS	54.0	53.0	119	109	64.0	58.0	91
KY	22.0	23.0	127	117	28.0	27.0	96
MD	14.0	14.0	114	107	16.0	15.0	94
MI	47.0	48.0	145	135	68.0	65.0	96
MN	87.0	86.0	172	169	150.0	145.0	97
MO	55.0	57.0	138	123	76.0	70.0	92
MT	195.0	190.0	131	124	255.0	235.0	92
NE	58.0	52.0	136	135	79.0	70.0	89
NV	49.0	46.0	88	91	43.0	42.0	98
N ENG ²	31.0	32.0	119	113	37.0	36.0	97
NM	90.0	89.0	82	73	74.0	65.0	88
NY	43.0	43.0	102	102	44.0	44.0	100
NC	13.0	16.0	100	94	13.0	15.0	115
ND	62.0	60.0	127	128	79.0	77.0	97
OH	80.0	75.0	131	136	105.0	102.0	97
OK	46.0	46.0	107	107	49.0	49.0	100
OR	118.0	120.0	130	131	153.0	157.0	103
PA	66.0	63.0	102	116	67.0	73.0	109
SD	225.0	220.0	127	120	285.0	265.0	93
TN	17.0	18.0	118	128	20.0	23.0	115
TX	650.0	590.0	65	61	425.0	360.0	85
UT	215.0	210.0	105	110	225.0	230.0	102
VA	43.0	50.0	133	120	57.0	60.0	105
WA	35.0	36.0	154	147	54.0	53.0	98
WV	23.0	24.0	135	125	31.0	30.0	97
WI	58.0	56.0	131	125	76.0	70.0	92
WY	265.0	260.0	102	100	270.0	260.0	96
Oth Sts ³	66.0	70.0	97	97	64.0	68.0	106
US	3,620.0	3,540.0	108	105	3,895.0	3,710.0	95

¹ Lamb crop is defined as lambs born in the Eastern States and lambs docked or branded in the Western States.

² N ENG includes CT, ME, MA, NH, RI, and VT.

³ Individual state estimates not available for states not shown, but are included in Other States.

**Market Sheep and Lambs: Number by Weight Group, State,
and United States, January 1, 2008**

State	Market Lambs					Market Sheep	Total Market Sheep and Lambs
	Under 65 Pounds	65 to 84 Pounds	85 to 105 Pounds	Over 105 Pounds	Total		
	<i>1,000 Head</i>	<i>1,000 Head</i>	<i>1,000 Head</i>	<i>1,000 Head</i>	<i>1,000 Head</i>	<i>1,000 Head</i>	<i>1,000 Head</i>
AZ	17.0	6.0	13.0	23.0	59.0	6.0	65.0
CA	105.0	30.0	55.0	80.0	270.0	10.0	280.0
CO	4.0	22.0	41.0	141.0	208.0	2.0	210.0
ID	4.0	1.0	8.0	23.0	36.0	2.0	38.0
IL	3.5	3.5	1.5	0.5	9.0	1.0	10.0
IN	2.9	0.5	0.7	0.9	5.0	1.0	6.0
IA	7.0	7.0	20.0	25.0	59.0	4.0	63.0
KS	10.0	3.0	4.0	3.0	20.0	3.0	23.0
KY	3.5	0.5	1.5	0.5	6.0	1.0	7.0
MD	2.3	1.1	0.5	0.1	4.0	2.0	6.0
MI	3.0	5.0	4.0	6.0	18.0	1.0	19.0
MN	9.0	8.0	11.0	10.0	38.0	1.0	39.0
MO	3.5	2.5	2.0	1.0	9.0	1.0	10.0
MT	1.0	4.0	12.0	5.0	22.0	3.0	25.0
NE	2.0	3.0	4.0	6.0	15.0	1.0	16.0
NV	1.0	1.0	3.0	5.0	10.0	1.0	11.0
N ENG ¹	2.2	1.3	1.2	0.6	5.3	2.2	7.5
NM	4.0	5.0	5.0	2.0	16.0	2.0	18.0
NY	7.0	2.0	1.0	1.0	11.0	1.0	12.0
NC	2.2	1.0	0.5	0.5	4.2	0.8	5.0
ND	2.0	4.0	8.0	6.0	20.0	1.0	21.0
OH	8.0	7.0	6.0	3.0	24.0	1.0	25.0
OK	5.0	3.0	3.0	3.0	14.0	1.0	15.0
OR	10.0	10.0	26.0	23.0	69.0	2.0	71.0
PA	5.0	4.0	3.0	1.0	13.0	3.0	16.0
SD	7.0	9.0	14.0	38.0	68.0	2.0	70.0
TN	3.6	0.6	0.5	0.8	5.5	0.5	6.0
TX	85.0	35.0	50.0	50.0	220.0	10.0	230.0
UT	2.0	2.0	9.0	13.0	26.0	4.0	30.0
VA	8.0	2.0	3.0	2.0	15.0	1.0	16.0
WA	3.5	1.0	1.5	1.5	7.5	0.5	8.0
WV	1.5	1.5	1.5	0.5	5.0		5.0
WI	4.0	3.0	4.0	4.0	15.0	2.0	17.0
WY	2.0	5.0	35.0	50.0	92.0	3.0	95.0
Oth Sts ²	10.0	3.0	2.5	2.0	17.5	5.5	23.0
US	350.7	197.5	355.9	531.9	1,436.0	82.5	1,518.5

¹ N ENG includes CT, ME, MA, NH, RI, and VT.

² Individual state estimates not available for states not shown, but are included in Other States.

**Market Sheep and Lambs: Number by Weight Group, State,
and United States, January 1, 2009**

State	Market Lambs					Market Sheep	Total Market Sheep and Lambs
	Under 65 Pounds	65 to 84 Pounds	85 to 105 Pounds	Over 105 Pounds	Total		
	<i>1,000 Head</i>	<i>1,000 Head</i>	<i>1,000 Head</i>	<i>1,000 Head</i>	<i>1,000 Head</i>	<i>1,000 Head</i>	<i>1,000 Head</i>
AZ	15.0	6.0	13.0	21.0	55.0	5.0	60.0
CA	110.0	25.0	50.0	120.0	305.0	10.0	315.0
CO	3.0	10.0	25.0	165.0	203.0	2.0	205.0
ID	1.0	1.0	7.0	22.0	31.0	1.0	32.0
IL	4.0	1.0	1.0	1.0	7.0	1.0	8.0
IN	3.5	0.6	1.4	0.5	6.0	1.0	7.0
IA	9.0	6.0	17.0	21.0	53.0	2.0	55.0
KS	12.0	1.0	3.0	3.0	19.0	4.0	23.0
KY	2.5	1.0	2.0	0.5	6.0	1.0	7.0
MD	1.4	0.9	0.6	0.1	3.0	3.0	6.0
MI	2.0	3.0	5.0	6.0	16.0	2.0	18.0
MN	8.0	8.0	10.0	11.0	37.0	1.0	38.0
MO	3.0	1.5	1.5	2.0	8.0	1.0	9.0
MT	1.0	4.0	13.0	4.0	22.0	3.0	25.0
NE	2.0	2.0	3.5	5.5	13.0	1.0	14.0
NV	1.0	2.0	2.0	4.0	9.0	1.0	10.0
N ENG ¹	2.2	1.2	1.0	0.6	5.0	2.0	7.0
NM	3.0	5.0	4.0	2.0	14.0	3.0	17.0
NY	6.0	2.0	2.0	1.0	11.0	1.0	12.0
NC	1.1	1.0	0.8	0.1	3.0	1.0	4.0
ND	3.0	4.5	8.0	4.5	20.0	1.0	21.0
OH	9.0	6.0	7.0	7.0	29.0	1.0	30.0
OK	8.0	3.0	2.0	3.0	16.0	1.0	17.0
OR	10.0	10.0	23.0	24.0	67.0	3.0	70.0
PA	6.0	4.0	2.0	1.0	13.0	3.0	16.0
SD	4.0	15.0	15.0	25.0	59.0	1.0	60.0
TN	3.7	0.7	0.7	0.9	6.0	1.0	7.0
TX	80.0	25.0	25.0	70.0	200.0	10.0	210.0
UT	2.0	2.0	10.0	13.0	27.0	3.0	30.0
VA	6.0	2.0	3.0	1.0	12.0	1.0	13.0
WA	5.0	1.0	1.5	1.5	9.0	1.0	10.0
WV	2.5	1.0	1.0	0.5	5.0		5.0
WI	4.0	3.0	4.0	4.0	15.0	2.0	17.0
WY	4.0	7.0	46.0	37.0	94.0	1.0	95.0
Oth Sts ²	12.0	4.0	3.0	2.0	21.0	6.0	27.0
US	349.9	170.4	314.0	584.7	1,419.0	81.0	1,500.0

¹ N ENG includes CT, ME, MA, NH, RI, and VT.

² Individual state estimates not available for states not shown, but are included in Other States.

**Wool: Number of Sheep and Lambs Shorn, Weight per Fleece,
and Production by State, and United States, 2007-2008**

State	Sheep Shorn		Weight per Fleece		Production	
	2007	2008	2007	2008	2007	2008
	<i>1,000 Head</i>	<i>1,000 Head</i>	<i>Pounds</i>	<i>Pounds</i>	<i>1,000 Pounds</i>	<i>1,000 Pounds</i>
AZ	120.0	120.0	6.3	6.3	750	750
CA	460.0	470.0	6.7	7.0	3,100	3,300
CO	400.0	380.0	6.8	6.8	2,700	2,600
ID	200.0	180.0	9.4	9.5	1,880	1,710
IL	53.0	48.0	7.7	7.5	410	360
IN	40.0	40.0	6.3	6.3	250	250
IA	215.0	195.0	6.2	6.1	1,330	1,180
KS	65.0	56.0	7.1	6.9	460	384
KY	16.0	13.0	6.9	6.5	110	85
MD	15.0	12.0	6.8	6.8	102	82
MI	70.0	67.0	6.1	6.0	430	400
MN	150.0	140.0	6.5	6.6	980	930
MO	63.0	69.0	6.6	6.0	415	415
MT	245.0	230.0	9.2	9.3	2,250	2,150
NE	70.0	55.0	7.6	7.2	530	395
NV	51.0	48.0	9.7	9.9	495	475
N ENG ¹	38.0	37.0	7.0	7.1	266	263
NM	120.0	105.0	7.5	7.6	900	800
NY	48.0	40.0	6.7	6.5	320	260
NC	8.0	6.0	6.3	6.3	50	38
ND	72.0	70.0	8.8	8.3	635	580
OH	108.0	103.0	6.0	6.0	650	620
OK	45.0	40.0	5.6	5.5	250	220
OR	195.0	182.0	6.5	6.5	1,270	1,190
PA	64.0	60.0	6.7	6.7	430	400
SD	295.0	280.0	7.7	7.8	2,270	2,184
TN	18.0	18.0	5.8	5.8	105	105
TX	620.0	600.0	7.3	7.0	4,500	4,200
UT	255.0	255.0	9.2	9.2	2,345	2,350
VA	37.0	36.0	5.7	5.7	210	205
WA	37.0	36.0	7.6	7.8	280	280
WV	24.0	24.0	5.4	5.1	130	122
WI	72.0	62.0	7.1	7.1	510	440
WY	330.0	320.0	9.5	9.4	3,150	3,000
Oth Sts ²	38.0	37.0	6.8	6.5	260	240
US	4,657.0	4,434.0	7.5	7.4	34,723	32,963

¹ N ENG includes CT, ME, MA, NH, RI, and VT.

² Individual state estimates not available for states not shown, but are included in Other States.

Wool: Price and Value by State and United States, 2007-2008

State	Price per Pound		Value ¹	
	2007	2008	2007	2008
	<i>Dollars</i>	<i>Dollars</i>	<i>1,000 Dollars</i>	<i>1,000 Dollars</i>
AZ	0.34	0.30	255	225
CA	0.85	1.10	2,635	3,630
CO	1.00	1.12	2,700	2,912
ID	0.94	1.14	1,767	1,949
IL	0.26	0.36	107	130
IN	0.24	0.18	60	45
IA	0.31	0.35	412	413
KS	0.52	0.65	239	250
KY	0.30	0.45	33	38
MD	0.40	0.55	41	45
MI	0.36	0.34	155	136
MN	0.34	0.36	333	335
MO	0.73	0.57	303	237
MT	1.30	1.40	2,925	3,010
NE	0.40	0.41	212	162
NV	1.10	1.35	545	641
N ENG ²	0.55	0.55	146	145
NM	1.40	1.70	1,260	1,360
NY	0.20	0.30	64	78
NC	0.50	0.40	25	15
ND	0.65	0.80	413	464
OH	0.34	0.37	221	229
OK	0.50	0.40	125	88
OR	0.56	0.68	711	809
PA	0.31	0.31	133	124
SD	0.85	0.91	1,930	1,987
TN	0.45	0.53	47	56
TX	1.21	1.16	5,445	4,872
UT	0.90	1.20	2,111	2,820
VA	0.45	0.50	95	103
WA	1.10	1.35	308	378
WV	0.41	0.44	53	54
WI	0.40	0.45	204	198
WY	1.26	1.46	3,969	4,380
Oth Sts ³	1.00	0.70	260	168
US ⁴	0.87	0.99	30,242	32,486

¹ Production multiplied by marketing year average price. U.S. value is the summation of State values.

² N ENG includes CT, ME, MA, NH, RI, and VT.

³ Individual state estimates not available for states not shown, but are included in Other States.

⁴ U.S. Value may not add due to rounding.

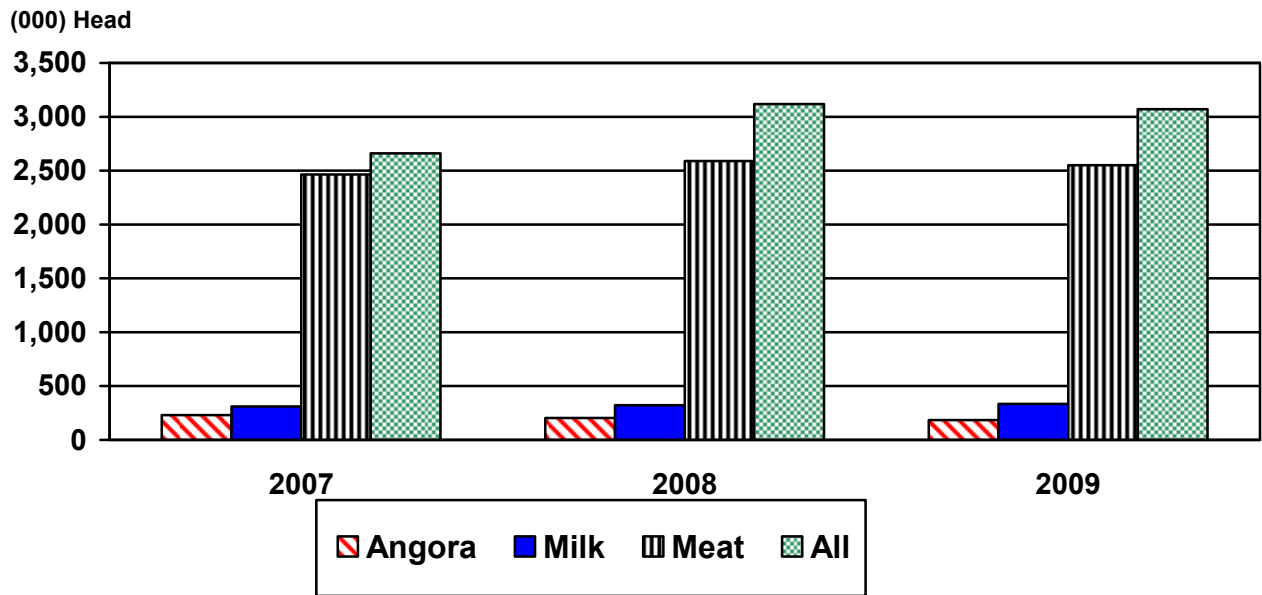
**All Goats: Number by Class, United States,
January 1, 2008-2009¹**

Class	2008	2009	2009 as % of 2008
	<i>Head</i>	<i>Head</i>	<i>Percent</i>
All Goats	3,118,000	3,070,000	98
Breeding All Goats	2,593,000	2,542,000	98
Replacement Kids - Under One Year	484,000	460,000	95
Does - One Year Old and Older	1,922,000	1,897,000	99
Bucks - One Year Old and Older	187,000	185,000	99
All, Market Goats & Kids	525,000	528,000	101
Kid Crop ²	2,001,000	1,963,000	98

¹ May not add due to rounding.

² Kid crop refers to kids born the previous year.

U.S. Goat Inventory January 1



**Angora Goats: Number by Class, United States,
January 1, 2008-2009¹**

Class	2008	2009	2009 as % of 2008
	<i>Head</i>	<i>Head</i>	<i>Percent</i>
All Angora Goats	205,000	185,000	90
Breeding Angora Goats	180,000	166,000	92
Replacement Kids - Under One Year	28,000	24,000	86
Does - One Year Old and Older	141,000	132,000	94
Bucks - One Year Old and Older	11,000	10,000	91
Angora, Market Goats & Kids	25,000	19,000	76
Kid Crop ²	109,000	96,000	88

¹ May not add due to rounding.

² Kid crop refers to kids born the previous year.

**Milk Goats: Number by Class, United States,
January 1, 2008-2009¹**

Class	2008	2009	2009 as % of 2008
	<i>Head</i>	<i>Head</i>	<i>Percent</i>
All Milk Goats	323,000	335,000	104
Breeding Milk Goats	293,000	302,000	103
Replacement Kids - Under One Year	65,000	66,000	102
Does - One Year Old and Older	206,000	215,000	104
Bucks - One Year Old and Older	22,000	21,000	95
Milk, Market Goats & Kids	30,000	33,000	110
Kid Crop ²	230,000	240,000	104

¹ May not add due to rounding.

² Kid crop refers to kids born the previous year.

**Meat and Other Goats: Number by Class, United States,
January 1, 2008-2009¹**

Class	2008	2009	2009 as % of 2008
	<i>Head</i>	<i>Head</i>	<i>Percent</i>
All Meat & Other Goats	2,590,000	2,550,000	98
Breeding Meat & Other Goats	2,120,000	2,074,000	98
Replacement Kids - Under One Year	391,000	370,000	95
Does - One Year Old and Older	1,575,000	1,550,000	98
Bucks - One Year Old and Older	154,000	154,000	100
Meat & Other, Market Goats & Kids	470,000	476,000	101
Kid Crop ²	1,662,000	1,627,000	98

¹ May not add due to rounding.

² Kid crop refers to kids born the previous year.

Angora Goats: Number by State and United States, 2008-2009

State	2008		2009	
	<i>Head</i>		<i>Head</i>	
AZ		25,000		24,000
CA		4,000		4,000
CO		1,400		1,000
MN		1,000		1,000
MO		1,400		1,500
NE		1,000		
N ENG ¹		1,300		1,250
NM		13,600		12,500
NC		1,000		
OH		1,300		1,400
OK		1,000		1,000
OR		1,700		1,800
PA		1,200		1,100
TX		134,000		120,000
WA		1,000		1,000
WI		1,000		1,000
Oth Sts ^{2 3}		14,100		12,450
US		205,000		185,000

¹ N ENG includes CT, ME, MA, NH, RI, and VT.

² Individual state estimates not available for states not shown, but are included in Other States.

³ NE and NC are included in Other States for 2009.

**Mohair: Production, Price, and Value by Selected States,
United States, 2007-2008**

State	Goats Clipped		Average Clip per Goat		Production		Price per Pound		Value ¹	
	2007	2008	2007	2008	2007	2008	2007	2008	2007	2008
	<i>Head</i>	<i>Head</i>	<i>Pounds</i>	<i>Pounds</i>	<i>1,000 Pounds</i>	<i>1,000 Pounds</i>	<i>Dollars</i>	<i>Dollars</i>	<i>1,000 Dollars</i>	<i>1,000 Dollars</i>
AZ	22,000	21,000	5.7	5.2	125	110	2.00	1.00	250	110
CA	3,500	3,000	6.3	6.0	22	18	7.00	4.00	154	72
NM	13,500	12,500	5.9	6.1	80	76	4.50	4.00	360	304
TX	150,000	130,000	6.4	6.3	960	820	4.00	3.80	3,840	3,116
Oth Sts ²	27,500	27,000	6.2	5.9	170	160	2.00	1.95	340	312
US	216,500	193,500	6.3	6.1	1,357	1,184	3.64	3.31	4,944	3,914

¹ Production multiplied by marketing year average price. U.S. value is summation of State values.

² Individual state estimates not available for states not shown, but are included in Other States.

Milk Goats: Number by State and United States, 2008-2009

State	2008	2009
	<i>Head</i>	<i>Head</i>
AL	4,000	4,500
AZ	2,000	2,000
AR	5,100	4,900
CA	36,000	37,000
CO	8,000	8,300
FL	6,000	6,000
GA	4,000	4,500
ID	3,000	2,500
IL	5,000	5,500
IN	10,000	10,500
IA	22,500	24,500
KS	4,000	4,750
KY	6,000	7,000
LA	1,300	1,200
MD	3,000	2,800
MI	8,400	8,700
MN	11,000	11,500
MS	3,000	2,800
MO	9,000	9,000
MT	1,800	1,900
NE	2,500	1,900
NV	3,700	4,300
N ENG ¹	12,000	10,500
NJ	1,700	1,700
NM	3,000	2,000
NY	12,000	13,550
NC	8,000	9,500
ND		1,000
OH	10,000	9,000
OK	8,000	8,000
OR	8,000	9,200
PA	13,000	14,500
SC	3,000	3,000
SD	2,000	1,500
TN	5,800	5,800
TX	21,000	20,000
UT	2,400	2,600
VA	4,500	4,500
WA	8,300	7,100
WV	2,000	2,200
WI	35,000	40,000
WY	1,700	1,800
Oth Sts ^{2 3}	2,300	1,500
US	323,000	335,000

¹ N ENG includes CT, ME, MA, NH, RI, and VT.

² Individual state estimates not available for states not shown, but are included in Other States.

³ ND is included in Other States for 2008.

Meat and Other Goats: Number by State and United States, 2008-2009

State	2008	2009
	<i>Head</i>	<i>Head</i>
AL	70,000	65,000
AZ	13,000	12,000
AR	45,000	47,000
CA	89,000	95,000
CO	39,000	34,000
FL	51,000	55,000
GA	79,000	80,300
HI	7,600	7,500
ID	12,000	12,000
IL	25,000	24,500
IN	36,000	31,000
IA	32,000	33,500
KS	43,000	50,000
KY	86,000	79,000
LA	20,000	20,000
MD	13,500	13,600
MI	12,000	12,500
MN	24,000	20,000
MS	25,000	26,000
MO	86,200	86,500
MT	10,000	9,000
NE	30,000	27,000
NV	7,000	6,100
N ENG ¹	14,000	12,100
NJ	8,000	8,000
NM	18,000	17,000
NY	25,000	27,000
NC	86,500	86,000
ND	3,200	2,800
OH	50,000	55,600
OK	115,000	115,000
OR	27,000	27,000
PA	44,000	42,000
SC	40,000	38,000
SD	8,000	7,500
TN	124,000	133,000
TX	1,030,000	980,000
UT	12,000	14,000
VA	56,000	62,000
WA	23,000	27,000
WV	24,000	23,500
WI	18,000	18,000
WY	6,000	5,000
Oth Sts ²	3,000	3,000
US	2,590,000	2,550,000

¹ N ENG includes CT, ME, MA, NH, RI, and VT.

² Individual state estimates not available for states not shown, but are included in Other States.

Reliability of January 1 Sheep, Lamb, and Goat Estimates

Survey Procedures: A random sample of U.S. producers was surveyed to provide data for these estimates. Survey procedures ensured that all sheep and goat producers, regardless of size, had a chance to be included in the survey. Large producers were sampled more heavily than small operations. About 24,000 operators were contacted during the first half of January by mail, telephone and face-to-face personal interview and 87 percent of the reports were usable. Regardless of when operators responded, they were asked to report inventories as of January 1.

Estimation Procedures: These sheep and goat estimates were prepared by the Agricultural Statistics Board. National and State survey data were reviewed for reasonableness and with estimates from past years. A projected balance sheet for calendar year 2008 was also used. The balance sheet begins with the previous inventory estimate, adds estimates of births and imports, and subtracts estimates of slaughter, exports and deaths. This indicated ending inventory level is compared with the Agricultural Statistics Board estimate for reasonableness.

Revision Policy: Revisions to previous estimates are made to improve the current estimate. Previous year estimates are subject to revision when current estimates are made. Estimates will also be reviewed after data from the Department of Agriculture's five-year Census of Agriculture are available. No revisions will be made after that date.

Reliability: Since all operations raising sheep and goats are not included in the sample, survey estimates are subject to sampling variability. Survey results are also subject to non-sampling errors, such as omissions, duplications, and mistakes in reporting, recording, and processing the data. The effects of these errors cannot be measured directly. They are minimized through rigid quality controls in the data collection process and through a careful review of all reported data for consistency and reasonableness.

To assist users in evaluating reliability of the estimates in this report, the "**Root Mean Square Error**" is shown for selected sheep items in the following table. The "Root Mean Square Error" is a statistical measure based on past performance and is computed using the differences between the first and latest estimates. The "Root Mean Square Error" for sheep and lamb inventory estimates over the past 10 years is 0.7 percent. This means that chances are 2 out of 3 that the final estimate will not be above or below the current estimate of 5.75 million head by more than 0.7 percent. Chances are 9 out of 10 that the difference will not exceed 1.2 percent.

The "Root Mean Square Error" for sheep shorn over the past 10 years is 0.9 percent. This means that chances are 2 out of 3 that the final estimate will not be above or below the current estimate of 4.43 million head by more than 0.9 percent. Chances are 9 out of 10 that the difference will not exceed 1.6 percent.

Also shown in the table is a 10-year record showing the range between the first inventory estimate and the latest estimate. Using estimates for All Sheep and Lambs as an example, changes between the first inventory estimate and the latest estimate during the past 10 years have averaged 26,000 head, ranging from 0 to 105,000 head. The initial inventory estimate of All Sheep and Lambs has been below the latest estimate 3 times and above the latest estimate 5 times in the last 10 years.

For Sheep and Lambs Shorn, changes between the first inventory estimate and the latest estimate during the past 10 years have averaged 32,000 head, ranging from 0 to 108,000 head. The initial inventory estimate of Sheep and Lambs Shorn has been below the latest estimate 3 times and above 4 times in the last 10 years.

Reliability of U.S. December 1 Sheep and Lamb Estimates ¹

Item	Root Mean Square Error	90% Confidence Level		Difference Between First and Final Estimates ¹			Number of Years	
		Percent	(000) Head	Average	Smallest	Largest	First Above Final	First Below Final
All Sheep & Lambs	0.7	1.2	69	26	0	105	5	3
Breeding Sheep	0.6	1.2	51	19	0	74	5	3
Lamb Crop	4.6	8.4	312	70	0	510	4	5
Sheep Shorn	0.9	1.6	71	32	0	108	4	3
Wool Prod	4.6	8.4	2,729	649	0	4,291	5	2

¹ Based on data for the past 10 years.

Information Contacts

Listed below are the commodity specialists in the Livestock Branch of the National Agricultural Statistics Service to contact for additional information.

Dan Kerestes, Chief, Livestock Branch (202) 720-3570

Livestock Section

Scott Hollis, Head, Livestock Section (202) 690-2424
 Jim Collom - Dairy Products (202) 690-3236
 Joe Gaynor - Dairy Products Prices (202) 690-2168
 Jason Hardegree - Cattle, Cattle on Feed (202) 720-3040
 Sherry Bertramsen - Livestock Slaughter (515) 284-4340
 Everett Olbert - Sheep and Goats (202) 720-4751
 Mike Miller - Milk Production and Milk Cows (202) 720-3278
 Nick Streff - Hogs and Pigs (202) 720-3106

ACCESS TO REPORTS!!

For your convenience, there are several ways to obtain NASS reports, data products, and services:

INTERNET ACCESS

All NASS reports are available free of charge on the worldwide Internet. For access, connect to the Internet and go to the NASS Home Page at: www.nass.usda.gov.

E-MAIL SUBSCRIPTION

All NASS reports are available by subscription free of charge direct to your e-mail address. Starting with the NASS Home Page at www.nass.usda.gov, under the right navigation, *Receive reports by Email*, click on **National** or **State**. Follow the instructions on the screen.

PRINTED REPORTS OR DATA PRODUCTS

CALL OUR TOLL-FREE ORDER DESK: 800-999-6779 (U.S. and Canada)
Other areas, please call 703-605-6220 FAX: 703-605-6900
(Visa, MasterCard, check, or money order acceptable for payment.)

ASSISTANCE

For **assistance** with general agricultural statistics or further information about NASS or its products or services, contact the **Agricultural Statistics Hotline** at **800-727-9540**, 7:30 a.m. to 4:00 p.m. ET, or e-mail: nass@nass.usda.gov.

The U.S. Department of Agriculture (USDA) prohibits discrimination in all its programs and activities on the basis of race, color, national origin, age, disability, and where applicable, sex, marital status, familial status, parental status, religion, sexual orientation, genetic information, political beliefs, reprisal, or because all or a part of an individual's income is derived from any public assistance program. (Not all prohibited bases apply to all programs.) Persons with disabilities who require alternative means for communication of program information (Braille, large print, audiotape, etc.) should contact USDA's TARGET Center at (202) 720-2600 (voice and TDD).

To file a complaint of discrimination, write to USDA, Director, Office of Civil Rights, 1400 Independence Avenue, S.W., Washington, D.C. 20250-9410, or call (800) 795-3272 (voice) or (202) 720-6382 (TDD). USDA is an equal opportunity provider and employer.