

---

Released July 24, 2009, by the National Agricultural Statistics Service (NASS), Agricultural Statistics Board, U.S. Department of Agriculture. For information on *Sheep and Goats* call Everett Olbert at 202-720-4751, office hours 7:30 a.m. to 4:00 p.m. ET.

## All Sheep and Lamb Inventory Down 3 Percent

**All sheep and lamb inventory** in the United States on July 1, 2009 totaled 7.05 million head, down 3 percent from July 1, 2008. Breeding sheep inventory at 4.28 million head on July 1, 2009 was down 3 percent from July 1, 2008. Market sheep and lambs (including newborn lambs), at 2.77 million head, were down 3 percent from last July.

**The breeding herd** consists of 3.47 million ewes one year old and older, 180,000 rams one year old and older, and 630,000 replacement lambs (including newborn lambs). Market lamb inventory at 2.69 million head was comprised of 1.60 million lambs under 65 pounds, 560,000 lambs 65-84 pounds, 290,000 lambs 85-105 pounds, and 240,000 lambs over 105 pounds. Market sheep inventory was 80,000 head.

## Lamb Crop Down Slightly

**The 2009 lamb crop** in the United States is expected to total 3.70 million head, down slightly from the 2008 lamb crop of 3.71 million head. Lambs born during January through June 2009 totaled 3.25 million head or 88 percent of the yearly total. An additional 450,000 head are expected to be born during the period July through December 2009.

## Total Goat and Kid Inventory Down 2 Percent

**All goat inventory** on July 1, 2009 totaled 3.71 million head, down 2 percent from the previous July number. **Breeding goat inventory** totaled 2.79 million head, down 2 percent from July 2008. **All market goats and kids** totaled 925,000 head, down 2 percent from the previous July. On July 1, 2009 meat and all other goats totaled 3.16 million head, down 1 percent from July 2008. Milk goat inventory was up 4 percent increasing to 385,000 head while angora goat numbers fell 28 percent to 165,000 head.

## Kid Crop Virtually Unchanged

**The 2009 kid crop** in the United States is expected to total 1.96 million head, virtually unchanged from the 2008 kid crop. The 2009 expected kidding rate of 103 kids per 100 does is up 1 percent from the 2008 kid rate of 102.

**Sheep and Lambs: Number by Class,  
United States, July 1, 2008-2009**

Class	2008	2009	2009 as % of 2008
	<i>1,000 Head</i>	<i>1,000 Head</i>	<i>Percent</i>
All Sheep and Lambs	7,270	7,050	97
Breeding Sheep and Lambs	4,400	4,280	97
Replacement Lambs			
Under One Year Old	630	630	100
Ewes - One Year Old and Older	3,590	3,470	97
Rams - One Year Old and Older	180	180	100
Market	2,870	2,770	97

**Market Sheep and Lambs Inventory: By Weight Class,  
United States, July 1, 2008-2009**

Period	Market Lambs					Market Sheep	Market Sheep and Lambs
	Under 65 Pounds	65 to 84 lbs	85 to 105 lbs	Over 105 Pounds	Total		
	<i>1,000 Head</i>	<i>1,000 Head</i>	<i>1,000 Head</i>	<i>1,000 Head</i>	<i>1,000 Head</i>	<i>1,000 Head</i>	<i>1,000 Head</i>
2008	1,630	585	330	250	2,795	75	2,870
2009	1,600	560	290	240	2,690	80	2,770

**Lamb Crop: Number and Percent of Total by  
Six-Month Period, United States, 2009<sup>1</sup>**

Period	Number	% of Total
	<i>1,000 Head</i>	<i>Percent</i>
Jan-Jun <sup>2</sup>	3,250	87.8
Jul-Dec <sup>3</sup>	450	12.2
Total	3,700	100.0

<sup>1</sup> Lamb crop is lambs born in the Eastern States and lambs docked or branded in the Western States.

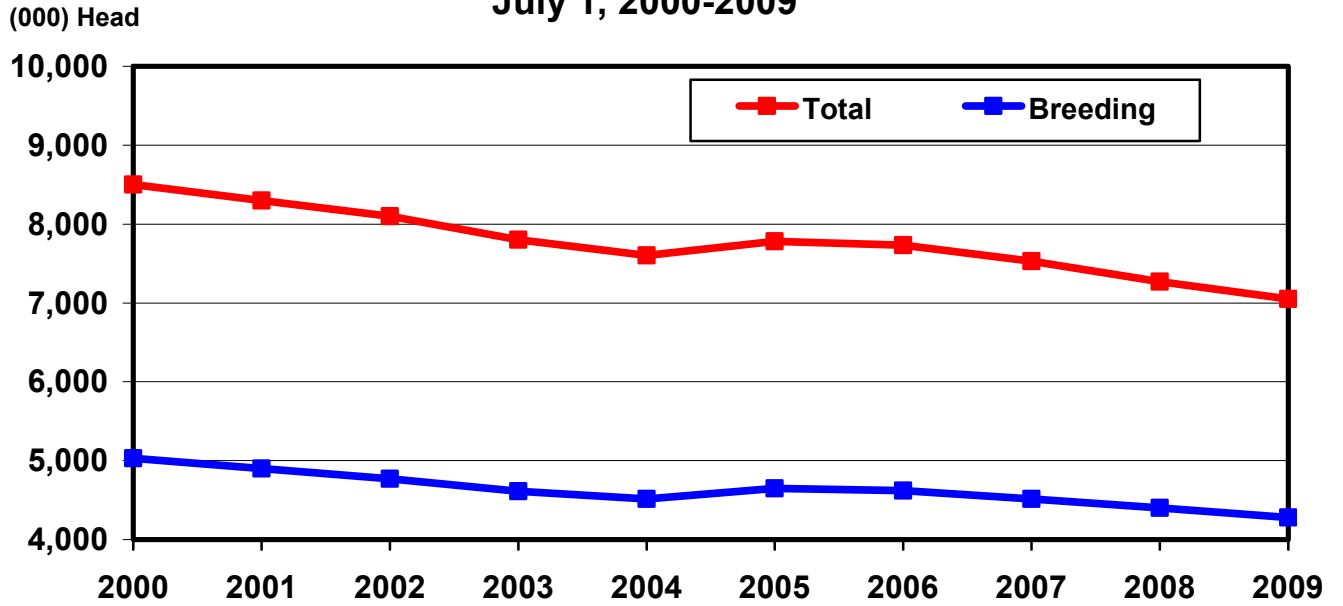
<sup>2</sup> Lambs born alive January 1, 2009 through June 30, 2009.

<sup>3</sup> Lambs expected to be born July 1, 2009 through December 31, 2009.

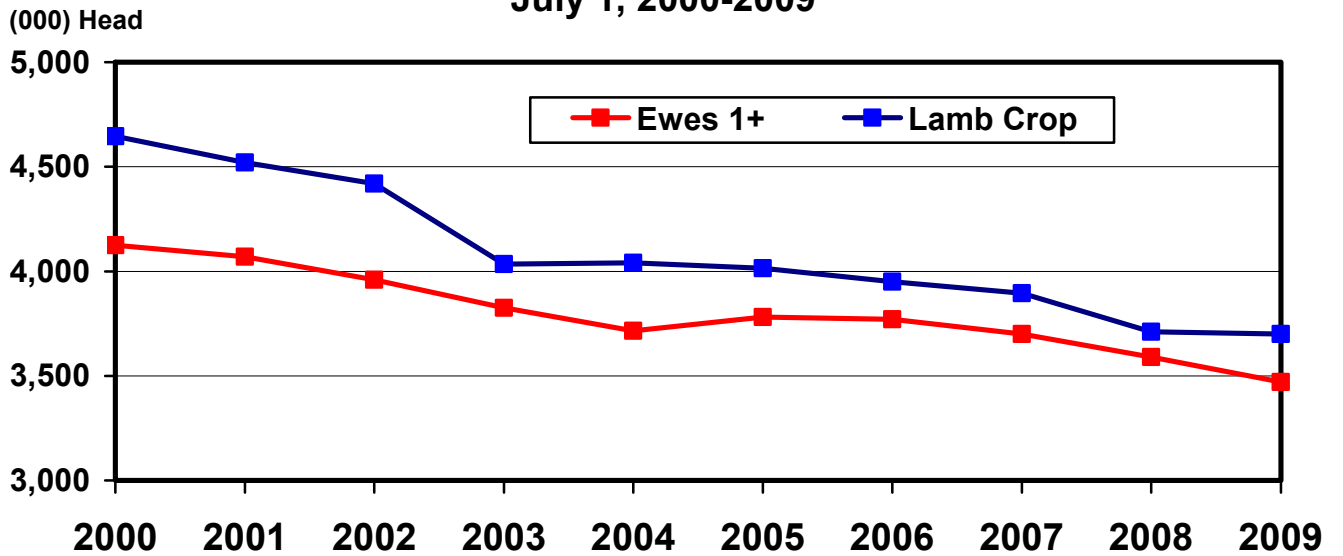
**Lamb Crop: Per 100 Ewes 1+, United States, 2008-2009**

Period	Lamb Crop	Breeding Ewes 1+ Jan 1	Lambs per 100 Ewes 1+ Jan 1
	<i>1,000 Head</i>	<i>1,000 Head</i>	<i>Number</i>
2008	3,710	3,540	105
2009	3,700	3,404	109

### U.S. Sheep and Lambs July 1, 2000-2009



### U.S. Total Breeding Ewes 1+ and Lamb Crop July 1, 2000-2009



**Goats: Number by Class, United States, July 1, 2008-2009**

Item	Total	Breeding	Market	Kid Crop <sup>1</sup>
	<i>Head</i>	<i>Head</i>	<i>Head</i>	<i>Head</i>
2008				
Angora	230,000	185,000	45,000	96,000
Milk	370,000	310,000	60,000	240,000
Meat	3,200,000	2,360,000	840,000	1,627,000
All	3,800,000	2,855,000	945,000	1,963,000
2009				
Angora	165,000	130,000	35,000	80,000
Milk	385,000	325,000	60,000	250,000
Meat	3,160,000	2,330,000	830,000	1,630,000
All	3,710,000	2,785,000	925,000	1,960,000

<sup>1</sup> Kid Crop for 2008 refers to the actual kids born during 2008. Kid Crop for 2009 is the kids born alive between January 1 and June 30, 2009 plus the kids expected to be born July through December 2009.

**Kid Crop: Per 100 Does 1+, United States, 2008-2009**

Period	Kid Crop	Breeding Does 1+ Jan 1	Kids per 100 Does 1+ Jan 1
	<i>Head</i>	<i>Head</i>	<i>Number</i>
2008	1,963,000	1,922,000	102
2009	1,960,000	1,897,000	103

## Reliability of July 1 Sheep and Goats Estimates

**Survey Procedures:** A random sample of U.S. producers was surveyed to provide data for these estimates. Survey procedures ensured that all sheep and goat producers, regardless of size, had a chance to be included in the survey. Data were collected during the first half of June from about 39,000 operations. These operators were contacted by face-to-face personal interviews. About 4,600 producers and feedlots were contacted during the first half of July by mail, telephone, and face-to-face personal interviews. Operators were asked to report inventories as of the first of the month and lamb crop for the entire year of 2009.

**Estimation Procedures:** These sheep and goat estimates were prepared by the Agricultural Statistics Board. National and State survey data were reviewed for reasonableness and with estimates from past years. A projected balance sheet for calendar year 2009 was also used. The balance sheet begins with the previous inventory estimate, adds estimates of births and imports, and subtracts estimates of slaughter, exports and deaths. This indicated ending inventory level is compared with the Agricultural Statistics Board estimate for reasonableness.

**Revision Policy:** Revisions to previous estimates are made to improve the current estimate. Previous year estimates are subject to revision when current estimates are made. Estimates will also be reviewed after data from the Department of Agriculture's five-year Census of Agriculture are available. No revisions will be made after that date.

**Reliability:** Since all operations raising sheep and goats are not included in the sample, survey estimates are subject to sampling variability. Survey results are also subject to non-sampling errors, such as omissions, duplications, and mistakes in reporting, recording, and processing the data. The effects of these errors cannot be measured directly. They are minimized through rigid quality controls in the data collection process and through a careful review of all reported data for consistency and reasonableness.

To assist users in evaluating reliability of the estimates in this report, the "**Root Mean Square Error**" is shown for lamb crop in the following table. The "Root Mean Square Error" is a statistical measure based on past performance and is computed using the differences between the first and latest estimates. The "Root Mean Square Error" for lamb crop estimates over the past 10 years is 3.6 percent. This means that chances are 2 out of 3 that the final estimate will not be above or below the current estimate of 3.70 million head by more than 3.6 percent. Chances are 9 out of 10 that the difference will not exceed 6.6 percent.

Also shown in the table is a 10-year record showing the range between the first inventory estimate and the latest estimate. Estimate changes for Lamb Crop between the first inventory estimate and the latest estimate during the past 10 years have averaged 121,000 head, ranging from 4,000 to 260,000 head. The initial inventory estimate of Lamb Crop has been below the latest estimate 4 times and above the latest estimate 6 times in the last 10 years.

**Reliability of U.S. July 1 Sheep and Lamb Estimates <sup>1</sup>**

Item	Root Mean Square Error	90% Confidence Level		Difference Between First and Final Estimates			Number of Years	
		Percent	Head	Average	Smallest	Largest	First Above Final	First Below Final
	<i>Percent</i>	<i>Percent</i>	<i>1,000 Head</i>	<i>1,000 Head</i>	<i>1,000 Head</i>	<i>1,000 Head</i>	<i>Number</i>	<i>Number</i>
Lamb Crop	3.6	6.6	244	121	4	260	6	4

<sup>1</sup> Based on data for the past 10 years.

**Information Contacts**

Listed below are the commodity specialists in the Livestock Branch of the National Agricultural Statistics Service to contact for additional information.

Dan Kerestes, Chief, Livestock Branch ..... (202) 720-3570

Livestock Section

Scott Hollis, Head, Livestock Section ..... (202) 690-2424  
 Jim Collom - Dairy Products ..... (202) 690-3236  
 Joe Gaynor - Dairy Products Prices ..... (202) 690-2168  
 Jason Hardegree - Cattle, Cattle on Feed ..... (202) 720-3040  
 Sherry Bertramsen - Livestock Slaughter ..... (515) 284-4340  
 Everett Olbert - Sheep and Goats ..... (202) 720-4751  
 Mike Miller - Milk Production and Milk Cows ..... (202) 720-3278  
 Nick Streff - Hogs and Pigs ..... (202) 720-3106

## ACCESS TO REPORTS!!

---

For your convenience, there are several ways to obtain NASS reports, data products, and services:

### INTERNET ACCESS

All NASS reports are available free of charge. For free access, connect to the Internet and go to the NASS Home Page at: **www.nass.usda.gov**.

### E-MAIL SUBSCRIPTION

All NASS reports are available by subscription free of charge direct to your e-mail address. Starting with the NASS Home Page at **www.nass.usda.gov**, under the right navigation, *Receive reports by Email*, click on **National** or **State**. Follow the instructions on the screen.

-----

### PRINTED REPORTS OR DATA PRODUCTS

**CALL OUR TOLL-FREE ORDER DESK: 800-999-6779 (U.S. and Canada)**  
**Other areas, please call 703-605-6220      FAX: 703-605-6900**  
**(Visa, MasterCard, check, or money order acceptable for payment.)**

-----

### ASSISTANCE

For **assistance** with general agricultural statistics or further information about NASS or its products or services, contact the **Agricultural Statistics Hotline** at **800-727-9540**, 7:30 a.m. to 4:00 p.m. ET, or e-mail: **nass@nass.usda.gov**.

The U.S. Department of Agriculture (USDA) prohibits discrimination in all its programs and activities on the basis of race, color, national origin, age, disability, and where applicable, sex, marital status, familial status, parental status, religion, sexual orientation, genetic information, political beliefs, reprisal, or because all or a part of an individual's income is derived from any public assistance program. (Not all prohibited bases apply to all programs.) Persons with disabilities who require alternative means for communication of program information (Braille, large print, audiotape, etc.) should contact USDA's TARGET Center at (202) 720-2600 (voice and TDD).

To file a complaint of discrimination, write to USDA, Director, Office of Civil Rights, 1400 Independence Avenue, S.W., Washington, D.C. 20250-9410, or call (800) 795-3272 (voice) or (202) 720-6382 (TDD). USDA is an equal opportunity provider and employer.