



Sheep and Goats

ISSN: 1949-1611

Released January 27, 2012, by the National Agricultural Statistics Service (NASS), Agricultural Statistics Board, United States Department of Agriculture (USDA).

Total Sheep and Lamb Inventory Down 2 Percent

All sheep and lamb inventory in the United States on January 1, 2012, totaled 5.35 million head, down 2 percent from 2011. Breeding sheep inventory decreased to 3.98 million head on January 1, 2012, down 3 percent from 4.08 million head on January 1, 2011. Ewes one year old and older, at 3.16 million head, were 2 percent below last year. Market sheep and lambs on January 1, 2012, totaled 1.37 million head, down 2 percent from January 1, 2011. Market lambs comprised 94 percent of the total market inventory. Twenty-two percent were lambs under 65 pounds, 12 percent were 65 - 84 pounds, 22 percent were 85 - 105 pounds, and 38 percent were over 105 pounds. Market sheep comprised the remaining 6 percent of total market inventory.

The 2011 lamb crop of 3.51 million head, was down 2 percent from 2010. The 2011 lambing rate was 109 lambs per 100 ewes one year old and older on January 1, 2011, an increase of 2 percent from 2010.

Shorn wool production in the United States during 2011 was 29.3 million pounds, down 4 percent from 2010. Sheep and lambs shorn totaled 4.03 million head, also down 4 percent from 2010. The average price paid for wool sold in 2011 was a record high \$1.67 per pound for a total value of 48.9 million dollars, up 40 percent from 35.0 million dollars in 2010.

Sheep death loss during 2011 totaled 240 thousand head, an increase of 4 percent from 2010. Lamb death loss increased 3 percent from 370 thousand head in 2010 to 380 thousand head in 2011.

Total Goat and Kid Inventory Down 4 Percent

All goat inventory in the United States on January 1, 2012, totaled 2.86 million head, down 4 percent from 2011. Breeding goat inventory totaled 2.38 million head, down 4 percent from 2011. Does one year old and older, at 1.78 million head, were 3 percent below last year's number. Market goats and kids totaled 487 thousand head, down 5 percent from a year ago.

Kid crop for 2011 totaled 1.88 million head for all goats, down 2 percent from 2010.

Meat and all other goats totaled 2.36 million head on January 1, 2012, down 4 percent from 2011. Milk goat inventory was 360 thousand head, unchanged from January 1, 2011, while Angora goats were down 15 percent, totaling 146 thousand head.

Mohair production in the United States during 2011 was 865 thousand pounds. Goats and kids clipped totaled 149 thousand head. Average weight per clip was 5.8 pounds. Mohair price was \$4.12 per pound with a value of 3.56 million dollars.

Contents

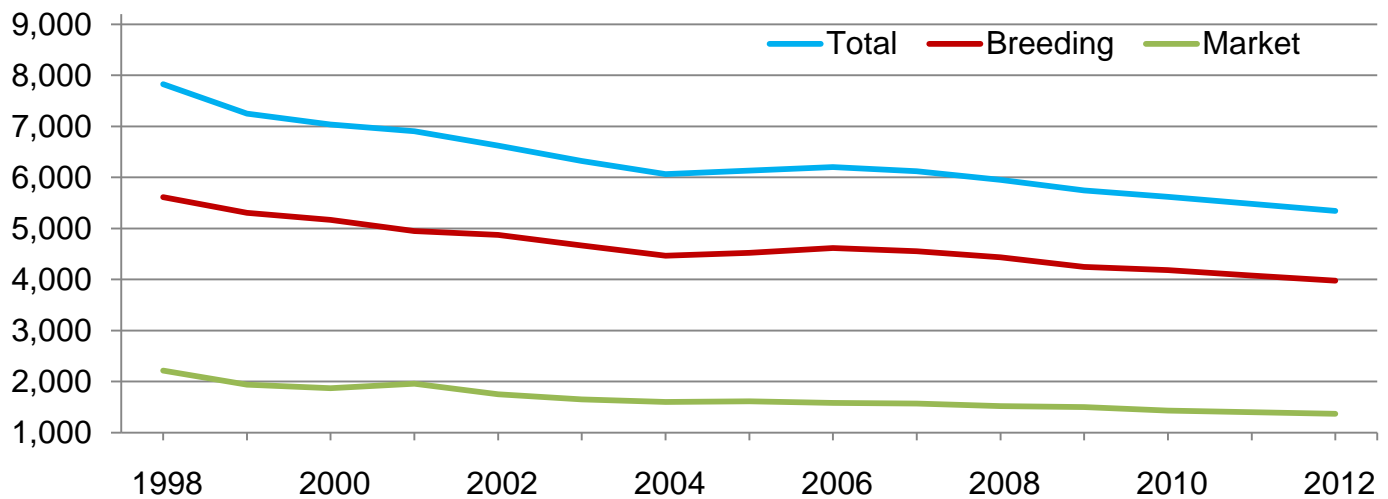
| | |
|---|----|
| Sheep and Lamb Inventory by Class – United States: January 1, 2011 and 2012 | 3 |
| Sheep and Lamb Inventory – United States: January 1..... | 3 |
| Wool Production, Price, and Value – United States: 2010 and 2011 | 3 |
| Sheep and Lamb Inventory by Class – States and United States: January 1, 2011 and 2012 | 4 |
| Breeding Sheep and Lamb Inventory by Class – States and United States: January 1, 2011 and 2012 | 5 |
| Lamb Crop – States and United States: 2010 and 2011 | 6 |
| Market Sheep and Lamb Inventory by Weight Group – States and United States: January 1, 2011 | 7 |
| Market Sheep and Lamb Inventory by Weight Group – States and United States: January 1, 2012 | 8 |
| Sheep and Lamb Farm Slaughter and Death Loss – States and United States: 2010 and 2011 | 9 |
| Wool Production – States and United States: 2010 and 2011 | 10 |
| Wool Price and Value – States and United States: 2010 and 2011 | 11 |
| Goat Inventory by Class – United States: January 1, 2011 and 2012 | 12 |
| Goat Inventory – United States: January 1..... | 12 |
| Angora Goat Inventory by Class – United States: January 1, 2011 and 2012 | 13 |
| Milk Goat Inventory by Class – United States: January 1, 2011 and 2012..... | 13 |
| Meat and Other Goat Inventory by Class – United States: January 1, 2011 and 2012 | 13 |
| Angora Goat Inventory – States and United States: January 1, 2011 and 2012..... | 14 |
| Mohair Production, Price, and Value – States and United States: 2010 and 2011..... | 14 |
| Milk Goat Inventory – States and United States: January 1, 2011 and 2012..... | 15 |
| Meat and Other Goat Inventory – States and United States: January 1, 2011 and 2012..... | 16 |
| Statistical Methodology..... | 17 |
| Reliability of January 1 Sheep and Lamb Estimates | 18 |
| Information Contacts..... | 18 |

Sheep and Lamb Inventory by Class – United States: January 1, 2011 and 2012

| Class | 2011 | 2012 | 2012 as percent of 2011 |
|--|--------------|--------------|-------------------------|
| | (1,000 head) | (1,000 head) | (percent) |
| All sheep and lambs | 5,480.0 | 5,345.0 | 98 |
| Breeding sheep and lambs | 4,080.0 | 3,975.0 | 97 |
| Replacement lambs under one year old | 665.0 | 650.0 | 98 |
| Ewes - one year old and older | 3,225.0 | 3,155.0 | 98 |
| Rams - one year old and older | 190.0 | 170.0 | 89 |
| Market | 1,400.0 | 1,370.0 | 98 |

Sheep and Lamb Inventory – United States: January 1

Thousand head



Wool Production, Price, and Value – United States: 2010 and 2011

| Year | Sheep shorn ¹ | Weight per fleece | Shorn wool production | Price per pound | Value |
|------------|--------------------------|-------------------|-----------------------|-----------------|-----------------|
| | (1,000 head) | (pounds) | (1,000 pounds) | (dollars) | (1,000 dollars) |
| 2010 | 4,180 | 7.3 | 30,370 | 1.15 | 35,018 |
| 2011 | 4,030 | 7.3 | 29,290 | 1.67 | 48,925 |

¹ Includes shearing at commercial feeding yards.

Sheep and Lamb Inventory by Class – States and United States: January 1, 2011 and 2012

| State | All sheep and lambs | | | Total breeding | | Total market | |
|---------------------------------|---------------------|--------------|-------------------------|----------------|--------------|--------------|--------------|
| | 2011 | 2012 | 2012 as percent of 2011 | 2011 | 2012 | 2011 | 2012 |
| | (1,000 head) | (1,000 head) | (percent) | (1,000 head) | (1,000 head) | (1,000 head) | (1,000 head) |
| Arizona | 150.0 | 140.0 | 93 | 100.0 | 97.0 | 50.0 | 43.0 |
| California | 600.0 | 570.0 | 95 | 330.0 | 320.0 | 270.0 | 250.0 |
| Colorado | 370.0 | 460.0 | 124 | 175.0 | 190.0 | 195.0 | 270.0 |
| Idaho | 235.0 | 240.0 | 102 | 183.0 | 199.0 | 52.0 | 41.0 |
| Illinois | 56.0 | 57.0 | 102 | 47.0 | 48.0 | 9.0 | 9.0 |
| Indiana | 50.0 | 55.0 | 110 | 44.0 | 48.0 | 6.0 | 7.0 |
| Iowa | 200.0 | 195.0 | 98 | 127.0 | 143.0 | 73.0 | 52.0 |
| Kansas | 70.0 | 70.0 | 100 | 43.0 | 44.0 | 27.0 | 26.0 |
| Kentucky | 34.0 | 40.0 | 118 | 28.0 | 34.0 | 6.0 | 6.0 |
| Michigan | 74.0 | 79.0 | 107 | 58.0 | 58.0 | 16.0 | 21.0 |
| Minnesota | 130.0 | 150.0 | 115 | 95.0 | 106.0 | 35.0 | 44.0 |
| Missouri | 81.0 | 83.0 | 102 | 72.0 | 73.0 | 9.0 | 10.0 |
| Montana | 230.0 | 225.0 | 98 | 215.0 | 210.0 | 15.0 | 15.0 |
| Nebraska | 74.0 | 77.0 | 104 | 57.0 | 62.0 | 17.0 | 15.0 |
| Nevada | 68.0 | 70.0 | 103 | 58.0 | 63.0 | 10.0 | 7.0 |
| New England ¹ | 51.0 | 45.0 | 88 | 43.0 | 38.0 | 8.0 | 7.0 |
| New Mexico | 110.0 | 100.0 | 91 | 95.0 | 89.0 | 15.0 | 11.0 |
| New York | 70.0 | 62.0 | 89 | 56.0 | 51.0 | 14.0 | 11.0 |
| North Carolina | 27.0 | 26.0 | 96 | 22.0 | 21.0 | 5.0 | 5.0 |
| North Dakota | 78.0 | 73.0 | 94 | 61.0 | 57.0 | 17.0 | 16.0 |
| Ohio | 129.0 | 126.0 | 98 | 102.0 | 102.0 | 27.0 | 24.0 |
| Oklahoma | 75.0 | 70.0 | 93 | 60.0 | 56.0 | 15.0 | 14.0 |
| Oregon | 215.0 | 200.0 | 93 | 148.0 | 140.0 | 67.0 | 60.0 |
| Pennsylvania | 98.0 | 89.0 | 91 | 84.0 | 75.0 | 14.0 | 14.0 |
| South Dakota | 265.0 | 285.0 | 108 | 210.0 | 225.0 | 55.0 | 60.0 |
| Tennessee | 35.0 | 35.0 | 100 | 29.0 | 28.0 | 6.0 | 7.0 |
| Texas | 850.0 | 650.0 | 76 | 680.0 | 520.0 | 170.0 | 130.0 |
| Utah | 280.0 | 305.0 | 109 | 255.0 | 280.0 | 25.0 | 25.0 |
| Virginia | 90.0 | 84.0 | 93 | 67.0 | 74.0 | 23.0 | 10.0 |
| Washington | 56.0 | 52.0 | 93 | 46.0 | 42.0 | 10.0 | 10.0 |
| West Virginia | 34.0 | 33.0 | 97 | 29.0 | 28.0 | 5.0 | 5.0 |
| Wisconsin | 90.0 | 84.0 | 93 | 76.0 | 69.0 | 14.0 | 15.0 |
| Wyoming | 365.0 | 370.0 | 101 | 275.0 | 270.0 | 90.0 | 100.0 |
| Other States ² | 140.0 | 145.0 | 104 | 110.0 | 115.0 | 30.0 | 30.0 |
| United States | 5,480.0 | 5,345.0 | 98 | 4,080.0 | 3,975.0 | 1,400.0 | 1,370.0 |

¹ New England includes Connecticut, Maine, Massachusetts, New Hampshire, Rhode Island, and Vermont.

² Unpublished states.

Breeding Sheep and Lamb Inventory by Class – States and United States: January 1, 2011 and 2012

| State | Breeding sheep | | | | Replacement lambs | | Total breeding sheep and lambs | |
|---------------------------------|----------------|--------------|--------------|--------------|-------------------|--------------|--------------------------------|--------------|
| | Ewes | | Rams | | 2011 | 2012 | 2011 | 2012 |
| | 2011 | 2012 | 2011 | 2012 | | | | |
| | (1,000 head) | (1,000 head) | (1,000 head) | (1,000 head) | (1,000 head) | (1,000 head) | (1,000 head) | (1,000 head) |
| Arizona | 75.0 | 71.0 | 7.0 | 6.0 | 18.0 | 20.0 | 100.0 | 97.0 |
| California | 273.0 | 265.0 | 12.0 | 10.0 | 45.0 | 45.0 | 330.0 | 320.0 |
| Colorado | 142.0 | 154.0 | 5.0 | 5.0 | 28.0 | 31.0 | 175.0 | 190.0 |
| Idaho | 151.0 | 166.0 | 6.0 | 5.0 | 26.0 | 28.0 | 183.0 | 199.0 |
| Illinois | 36.0 | 37.0 | 2.5 | 3.0 | 8.5 | 8.0 | 47.0 | 48.0 |
| Indiana | 34.0 | 37.0 | 3.0 | 3.0 | 7.0 | 8.0 | 44.0 | 48.0 |
| Iowa | 104.0 | 115.0 | 5.0 | 5.0 | 18.0 | 23.0 | 127.0 | 143.0 |
| Kansas | 33.0 | 34.0 | 2.0 | 2.0 | 8.0 | 8.0 | 43.0 | 44.0 |
| Kentucky | 22.0 | 27.0 | 1.5 | 2.0 | 4.5 | 5.0 | 28.0 | 34.0 |
| Michigan | 44.0 | 43.0 | 3.0 | 3.0 | 11.0 | 12.0 | 58.0 | 58.0 |
| Minnesota | 77.0 | 83.0 | 4.0 | 4.0 | 14.0 | 19.0 | 95.0 | 106.0 |
| Missouri | 57.0 | 58.0 | 3.0 | 3.0 | 12.0 | 12.0 | 72.0 | 73.0 |
| Montana | 170.0 | 165.0 | 7.0 | 6.0 | 38.0 | 39.0 | 215.0 | 210.0 |
| Nebraska | 46.0 | 51.0 | 3.0 | 3.0 | 8.0 | 8.0 | 57.0 | 62.0 |
| Nevada | 46.0 | 49.0 | 2.0 | 2.0 | 10.0 | 12.0 | 58.0 | 63.0 |
| New England ¹ | 32.0 | 29.0 | 3.0 | 2.0 | 8.0 | 7.0 | 43.0 | 38.0 |
| New Mexico | 75.0 | 72.0 | 5.0 | 4.0 | 15.0 | 13.0 | 95.0 | 89.0 |
| New York | 43.0 | 38.0 | 3.0 | 3.0 | 10.0 | 10.0 | 56.0 | 51.0 |
| North Carolina | 16.0 | 15.0 | 2.0 | 2.0 | 4.0 | 4.0 | 22.0 | 21.0 |
| North Dakota | 50.0 | 46.0 | 2.0 | 2.0 | 9.0 | 9.0 | 61.0 | 57.0 |
| Ohio | 81.0 | 78.0 | 6.0 | 6.0 | 15.0 | 18.0 | 102.0 | 102.0 |
| Oklahoma | 45.0 | 42.0 | 4.0 | 4.0 | 11.0 | 10.0 | 60.0 | 56.0 |
| Oregon | 118.0 | 109.0 | 7.0 | 6.0 | 23.0 | 25.0 | 148.0 | 140.0 |
| Pennsylvania | 62.0 | 56.0 | 6.0 | 6.0 | 16.0 | 13.0 | 84.0 | 75.0 |
| South Dakota | 173.0 | 185.0 | 7.0 | 7.0 | 30.0 | 33.0 | 210.0 | 225.0 |
| Tennessee | 22.0 | 21.0 | 2.0 | 2.0 | 5.0 | 5.0 | 29.0 | 28.0 |
| Texas | 515.0 | 415.0 | 40.0 | 30.0 | 125.0 | 75.0 | 680.0 | 520.0 |
| Utah | 210.0 | 230.0 | 9.0 | 9.0 | 36.0 | 41.0 | 255.0 | 280.0 |
| Virginia | 55.0 | 57.0 | 3.0 | 3.0 | 9.0 | 14.0 | 67.0 | 74.0 |
| Washington | 36.0 | 33.0 | 3.0 | 2.0 | 7.0 | 7.0 | 46.0 | 42.0 |
| West Virginia | 24.0 | 23.0 | 1.0 | 1.0 | 4.0 | 4.0 | 29.0 | 28.0 |
| Wisconsin | 59.0 | 54.0 | 3.0 | 3.0 | 14.0 | 12.0 | 76.0 | 69.0 |
| Wyoming | 220.0 | 215.0 | 8.0 | 7.0 | 47.0 | 48.0 | 275.0 | 270.0 |
| Other States ² | 79.0 | 82.0 | 10.0 | 9.0 | 21.0 | 24.0 | 110.0 | 115.0 |
| United States | 3,225.0 | 3,155.0 | 190.0 | 170.0 | 665.0 | 650.0 | 4,080.0 | 3,975.0 |

¹ New England includes Connecticut, Maine, Massachusetts, New Hampshire, Rhode Island, and Vermont.

² Unpublished states.

Lamb Crop – States and United States: 2010 and 2011

| State | Ewes 1 year and older January 1 | | Lambs per 100 ewes January 1 | | Lamb crop ¹ | | |
|---------------------------------|---------------------------------|--------------|------------------------------|----------|------------------------|--------------|-------------------------|
| | 2010 | 2011 | 2010 | 2011 | 2010 | 2011 | 2011 as percent of 2010 |
| | (1,000 head) | (1,000 head) | (number) | (number) | (1,000 head) | (1,000 head) | (percent) |
| Arizona | 75.0 | 75.0 | 64 | 64 | 48.0 | 48.0 | 100 |
| California | 263.0 | 273.0 | 99 | 92 | 260.0 | 250.0 | 96 |
| Colorado | 150.0 | 142.0 | 113 | 134 | 170.0 | 190.0 | 112 |
| Idaho | 150.0 | 151.0 | 137 | 139 | 205.0 | 210.0 | 102 |
| Illinois | 41.0 | 36.0 | 124 | 136 | 51.0 | 49.0 | 96 |
| Indiana | 36.0 | 34.0 | 122 | 138 | 44.0 | 47.0 | 107 |
| Iowa | 116.0 | 104.0 | 138 | 149 | 160.0 | 155.0 | 97 |
| Kansas | 41.0 | 33.0 | 122 | 142 | 50.0 | 47.0 | 94 |
| Kentucky | 23.0 | 22.0 | 109 | 136 | 25.0 | 30.0 | 120 |
| Michigan | 46.0 | 44.0 | 130 | 145 | 60.0 | 64.0 | 107 |
| Minnesota | 76.0 | 77.0 | 164 | 175 | 125.0 | 135.0 | 108 |
| Missouri | 55.5 | 57.0 | 128 | 126 | 71.0 | 72.0 | 101 |
| Montana | 185.0 | 170.0 | 119 | 121 | 220.0 | 205.0 | 93 |
| Nebraska | 47.0 | 46.0 | 143 | 152 | 67.0 | 70.0 | 104 |
| Nevada | 49.0 | 46.0 | 86 | 102 | 42.0 | 47.0 | 112 |
| New England ² | 30.0 | 32.0 | 120 | 106 | 36.0 | 34.0 | 94 |
| New Mexico | 84.0 | 75.0 | 67 | 67 | 56.0 | 50.0 | 89 |
| New York | 42.0 | 43.0 | 117 | 100 | 49.0 | 43.0 | 88 |
| North Carolina | 15.0 | 16.0 | 113 | 106 | 17.0 | 17.0 | 100 |
| North Dakota | 59.0 | 50.0 | 119 | 126 | 70.0 | 63.0 | 90 |
| Ohio | 81.0 | 81.0 | 128 | 123 | 104.0 | 100.0 | 96 |
| Oklahoma | 43.0 | 45.0 | 112 | 102 | 48.0 | 46.0 | 96 |
| Oregon | 121.0 | 118.0 | 127 | 114 | 154.0 | 135.0 | 88 |
| Pennsylvania | 63.0 | 62.0 | 111 | 103 | 70.0 | 64.0 | 91 |
| South Dakota | 210.0 | 173.0 | 110 | 136 | 230.0 | 235.0 | 102 |
| Tennessee | 19.0 | 22.0 | 142 | 118 | 27.0 | 26.0 | 96 |
| Texas | 510.0 | 515.0 | 71 | 66 | 360.0 | 340.0 | 94 |
| Utah | 215.0 | 210.0 | 102 | 112 | 220.0 | 235.0 | 107 |
| Virginia | 55.0 | 55.0 | 116 | 109 | 64.0 | 60.0 | 94 |
| Washington | 38.0 | 36.0 | 142 | 131 | 54.0 | 47.0 | 87 |
| West Virginia | 20.0 | 24.0 | 155 | 129 | 31.0 | 31.0 | 100 |
| Wisconsin | 57.0 | 59.0 | 135 | 119 | 77.0 | 70.0 | 91 |
| Wyoming | 240.0 | 220.0 | 96 | 100 | 230.0 | 220.0 | 96 |
| Other States ³ | 79.5 | 79.0 | 94 | 95 | 75.0 | 75.0 | 100 |
| United States | 3,335.0 | 3,225.0 | 107 | 109 | 3,570.0 | 3,510.0 | 98 |

¹ Lamb crop is defined as lambs born in the Eastern States and lambs docked or branded in the Western States.

² New England includes Connecticut, Maine, Massachusetts, New Hampshire, Rhode Island, and Vermont.

³ Unpublished states.

Market Sheep and Lamb Inventory by Weight Group – States and United States: January 1, 2011

| State | Market lambs | | | | | Market sheep | Total market sheep and lambs |
|---------------------------------|-----------------|----------------|-----------------|-----------------|--------------|--------------|------------------------------|
| | Under 65 pounds | 65 - 84 pounds | 85 - 105 pounds | Over 105 pounds | Total | | |
| | (1,000 head) | (1,000 head) | (1,000 head) | (1,000 head) | (1,000 head) | (1,000 head) | (1,000 head) |
| Arizona | 12.0 | 6.0 | 13.0 | 14.0 | 45.0 | 5.0 | 50.0 |
| California | 140.0 | 15.0 | 35.0 | 70.0 | 260.0 | 10.0 | 270.0 |
| Colorado | 2.0 | 10.0 | 42.0 | 139.0 | 193.0 | 2.0 | 195.0 |
| Idaho | 1.0 | 8.0 | 7.0 | 34.0 | 50.0 | 2.0 | 52.0 |
| Illinois | 3.0 | 2.3 | 0.9 | 1.8 | 8.0 | 1.0 | 9.0 |
| Indiana | 3.2 | 0.5 | 0.9 | 0.4 | 5.0 | 1.0 | 6.0 |
| Iowa | 6.0 | 8.0 | 30.0 | 28.0 | 72.0 | 1.0 | 73.0 |
| Kansas | 13.0 | 3.5 | 3.5 | 3.0 | 23.0 | 4.0 | 27.0 |
| Kentucky | 2.0 | 1.0 | 1.5 | 0.5 | 5.0 | 1.0 | 6.0 |
| Michigan | 2.0 | 3.0 | 4.0 | 5.0 | 14.0 | 2.0 | 16.0 |
| Minnesota | 8.0 | 7.0 | 6.0 | 13.0 | 34.0 | 1.0 | 35.0 |
| Missouri | 4.0 | 1.5 | 1.7 | 0.8 | 8.0 | 1.0 | 9.0 |
| Montana | 1.0 | 2.0 | 8.0 | 2.0 | 13.0 | 2.0 | 15.0 |
| Nebraska | 1.5 | 4.5 | 5.0 | 5.0 | 16.0 | 1.0 | 17.0 |
| Nevada | 1.0 | 4.0 | 3.0 | 1.0 | 9.0 | 1.0 | 10.0 |
| New England ¹ | 2.6 | 1.7 | 1.2 | 0.5 | 6.0 | 2.0 | 8.0 |
| New Mexico | 3.0 | 5.0 | 3.0 | 2.0 | 13.0 | 2.0 | 15.0 |
| New York | 7.0 | 2.0 | 2.0 | 1.0 | 12.0 | 2.0 | 14.0 |
| North Carolina | 2.5 | 0.8 | 0.6 | 0.1 | 4.0 | 1.0 | 5.0 |
| North Dakota | 1.5 | 3.0 | 6.0 | 5.5 | 16.0 | 1.0 | 17.0 |
| Ohio | 8.0 | 5.7 | 5.5 | 6.8 | 26.0 | 1.0 | 27.0 |
| Oklahoma | 6.0 | 3.0 | 1.0 | 4.0 | 14.0 | 1.0 | 15.0 |
| Oregon | 10.0 | 12.5 | 18.0 | 23.5 | 64.0 | 3.0 | 67.0 |
| Pennsylvania | 5.0 | 3.0 | 2.0 | 1.0 | 11.0 | 3.0 | 14.0 |
| South Dakota | 3.0 | 9.0 | 17.0 | 25.0 | 54.0 | 1.0 | 55.0 |
| Tennessee | 2.2 | 2.0 | 1.0 | 0.5 | 5.7 | 0.3 | 6.0 |
| Texas | 80.0 | 25.0 | 15.0 | 40.0 | 160.0 | 10.0 | 170.0 |
| Utah | 2.0 | 2.0 | 6.0 | 11.0 | 21.0 | 4.0 | 25.0 |
| Virginia | 7.0 | 11.5 | 2.9 | 1.1 | 22.5 | 0.5 | 23.0 |
| Washington | 3.0 | 1.5 | 2.3 | 1.0 | 7.8 | 2.2 | 10.0 |
| West Virginia | 2.0 | 1.0 | 0.5 | 0.5 | 4.0 | 1.0 | 5.0 |
| Wisconsin | 5.0 | 3.0 | 2.0 | 2.0 | 12.0 | 2.0 | 14.0 |
| Wyoming | 2.0 | 5.0 | 45.0 | 36.0 | 88.0 | 2.0 | 90.0 |
| Other States ² | 12.5 | 5.0 | 4.5 | 2.0 | 24.0 | 6.0 | 30.0 |
| United States | 364.0 | 178.0 | 297.0 | 481.0 | 1,320.0 | 80.0 | 1,400.0 |

¹ New England includes Connecticut, Maine, Massachusetts, New Hampshire, Rhode Island, and Vermont.

² Unpublished states.

Market Sheep and Lamb Inventory by Weight Group – States and United States: January 1, 2012

| State | Market lambs | | | | | Market sheep | Total market sheep and lambs |
|---------------------------------|-----------------|----------------|-----------------|-----------------|--------------|--------------|------------------------------|
| | Under 65 pounds | 65 - 84 pounds | 85 - 105 pounds | Over 105 pounds | Total | | |
| | (1,000 head) | (1,000 head) | (1,000 head) | (1,000 head) | (1,000 head) | (1,000 head) | (1,000 head) |
| Arizona | 10.0 | 3.0 | 5.0 | 21.0 | 39.0 | 4.0 | 43.0 |
| California | 105.0 | 20.0 | 15.0 | 105.0 | 245.0 | 5.0 | 250.0 |
| Colorado | 3.0 | 14.0 | 85.0 | 167.0 | 269.0 | 1.0 | 270.0 |
| Idaho | 2.0 | 2.0 | 8.0 | 27.0 | 39.0 | 2.0 | 41.0 |
| Illinois | 3.5 | 1.9 | 1.2 | 1.4 | 8.0 | 1.0 | 9.0 |
| Indiana | 4.0 | 0.6 | 1.0 | 0.4 | 6.0 | 1.0 | 7.0 |
| Iowa | 9.0 | 8.0 | 17.0 | 17.0 | 51.0 | 1.0 | 52.0 |
| Kansas | 11.0 | 3.0 | 2.0 | 6.0 | 22.0 | 4.0 | 26.0 |
| Kentucky | 2.0 | 1.0 | 1.5 | 0.5 | 5.0 | 1.0 | 6.0 |
| Michigan | 2.0 | 2.0 | 6.0 | 9.0 | 19.0 | 2.0 | 21.0 |
| Minnesota | 9.0 | 10.0 | 10.0 | 14.0 | 43.0 | 1.0 | 44.0 |
| Missouri | 3.0 | 2.5 | 2.0 | 1.5 | 9.0 | 1.0 | 10.0 |
| Montana | 2.0 | 3.0 | 7.0 | 2.0 | 14.0 | 1.0 | 15.0 |
| Nebraska | 2.0 | 2.0 | 5.0 | 5.0 | 14.0 | 1.0 | 15.0 |
| Nevada | 1.0 | 1.0 | 2.0 | 2.0 | 6.0 | 1.0 | 7.0 |
| New England ¹ | 2.0 | 1.4 | 1.0 | 0.6 | 5.0 | 2.0 | 7.0 |
| New Mexico | 3.0 | 3.0 | 2.0 | 1.0 | 9.0 | 2.0 | 11.0 |
| New York | 6.0 | 2.0 | 1.0 | 1.0 | 10.0 | 1.0 | 11.0 |
| North Carolina | 2.5 | 1.0 | 0.4 | 0.1 | 4.0 | 1.0 | 5.0 |
| North Dakota | 1.0 | 3.0 | 7.0 | 4.0 | 15.0 | 1.0 | 16.0 |
| Ohio | 6.0 | 6.0 | 6.0 | 5.0 | 23.0 | 1.0 | 24.0 |
| Oklahoma | 7.0 | 2.0 | 2.0 | 1.0 | 12.0 | 2.0 | 14.0 |
| Oregon | 7.0 | 8.0 | 17.0 | 25.0 | 57.0 | 3.0 | 60.0 |
| Pennsylvania | 5.0 | 3.0 | 2.0 | 1.0 | 11.0 | 3.0 | 14.0 |
| South Dakota | 3.0 | 10.0 | 20.0 | 26.0 | 59.0 | 1.0 | 60.0 |
| Tennessee | 3.0 | 1.6 | 0.9 | 1.0 | 6.5 | 0.5 | 7.0 |
| Texas | 55.0 | 20.0 | 10.0 | 25.0 | 110.0 | 20.0 | 130.0 |
| Utah | 2.0 | 2.0 | 6.0 | 11.0 | 21.0 | 4.0 | 25.0 |
| Virginia | 5.0 | 2.0 | 1.0 | 1.0 | 9.0 | 1.0 | 10.0 |
| Washington | 2.0 | 2.0 | 2.5 | 1.0 | 7.5 | 2.5 | 10.0 |
| West Virginia | 2.5 | 1.0 | 1.0 | 0.5 | 5.0 | | 5.0 |
| Wisconsin | 3.0 | 2.0 | 5.0 | 3.0 | 13.0 | 2.0 | 15.0 |
| Wyoming | 1.0 | 10.0 | 51.0 | 34.0 | 96.0 | 4.0 | 100.0 |
| Other States ² | 12.5 | 5.0 | 4.5 | 2.0 | 24.0 | 6.0 | 30.0 |
| United States | 297.0 | 159.0 | 308.0 | 522.0 | 1,286.0 | 84.0 | 1,370.0 |

¹ New England includes Connecticut, Maine, Massachusetts, New Hampshire, Rhode Island, and Vermont.

² Unpublished states.

Sheep and Lamb Farm Slaughter and Death Loss – States and United States: 2010 and 2011

| State | Farm slaughter ¹ | | Deaths | | | |
|---------------------------------|-----------------------------|--------------|--------------|--------------|--------------|--------------|
| | | | Sheep | | Lambs | |
| | 2010 | 2011 | 2010 | 2011 | 2010 | 2011 |
| | (1,000 head) | (1,000 head) | (1,000 head) | (1,000 head) | (1,000 head) | (1,000 head) |
| Arizona | 13.0 | 12.5 | 4.5 | 6.0 | 4.0 | 6.0 |
| California | 5.0 | 4.5 | 16.0 | 15.0 | 9.0 | 9.0 |
| Colorado | 2.5 | 2.5 | 9.0 | 16.0 | 15.0 | 20.0 |
| Idaho | 3.0 | 2.5 | 7.0 | 8.0 | 10.0 | 13.0 |
| Illinois | 2.0 | 2.0 | 3.0 | 3.0 | 6.0 | 6.0 |
| Indiana | 3.3 | 3.3 | 2.0 | 3.0 | 7.0 | 6.0 |
| Iowa | 1.5 | 1.4 | 10.0 | 9.0 | 20.0 | 20.0 |
| Kansas | 2.5 | 2.5 | 3.0 | 3.0 | 6.0 | 6.0 |
| Kentucky | 0.5 | 0.5 | 2.5 | 2.0 | 3.0 | 4.0 |
| Michigan | 2.0 | 2.0 | 3.0 | 4.0 | 7.0 | 7.0 |
| Minnesota | 4.0 | 4.0 | 9.0 | 10.0 | 16.0 | 18.0 |
| Missouri | 1.0 | 1.0 | 2.5 | 3.0 | 10.0 | 9.0 |
| Montana | 1.5 | 1.5 | 13.0 | 12.0 | 17.0 | 16.0 |
| Nebraska | 0.4 | 0.4 | 3.2 | 3.4 | 8.0 | 8.0 |
| Nevada | 1.0 | 1.0 | 5.0 | 5.0 | 9.0 | 10.0 |
| New England ² | 2.3 | 2.2 | 2.0 | 1.5 | 2.8 | 2.7 |
| New Mexico | 6.0 | 5.5 | 8.0 | 8.0 | 4.0 | 4.0 |
| New York | 2.5 | 2.5 | 2.5 | 2.0 | 5.0 | 5.0 |
| North Carolina | 0.2 | 0.2 | 1.3 | 1.6 | 2.7 | 2.3 |
| North Dakota | 0.5 | 0.5 | 3.0 | 3.0 | 7.0 | 7.0 |
| Ohio | 3.0 | 3.0 | 8.0 | 7.0 | 11.0 | 12.0 |
| Oklahoma | 1.3 | 1.3 | 4.0 | 4.0 | 8.0 | 7.0 |
| Oregon | 4.0 | 4.0 | 7.0 | 7.0 | 7.0 | 7.0 |
| Pennsylvania | 2.0 | 2.0 | 5.0 | 4.0 | 9.0 | 9.0 |
| South Dakota | 1.4 | 1.5 | 10.0 | 10.0 | 30.0 | 29.0 |
| Tennessee | 1.3 | 1.3 | 2.5 | 2.0 | 4.0 | 4.0 |
| Texas | 2.0 | 2.0 | 40.0 | 40.0 | 60.0 | 64.0 |
| Utah | 6.0 | 6.0 | 12.0 | 12.0 | 15.0 | 15.0 |
| Virginia | 3.0 | 3.0 | 3.0 | 5.0 | 9.0 | 8.0 |
| Washington | 6.0 | 6.0 | 4.0 | 3.0 | 3.0 | 2.0 |
| West Virginia | 0.1 | 0.1 | 2.5 | 2.5 | 5.0 | 5.5 |
| Wisconsin | 1.5 | 1.5 | 4.0 | 4.0 | 10.0 | 9.0 |
| Wyoming | 2.0 | 2.0 | 9.0 | 11.0 | 13.0 | 13.0 |
| Other States ³ | 7.0 | 7.0 | 9.5 | 10.0 | 17.5 | 16.5 |
| United States | 95.3 | 93.2 | 230.0 | 240.0 | 370.0 | 380.0 |

¹ Excludes custom slaughter for farmers at commercial establishments.

² New England includes Connecticut, Maine, Massachusetts, New Hampshire, Rhode Island, and Vermont.

³ Unpublished states.

Wool Production – States and United States: 2010 and 2011

| State | Sheep shorn | | Weight per fleece | | Production | |
|---------------------------------|----------------------|----------------------|-------------------|------------------|------------------------|------------------------|
| | 2010 (1,000 head) | 2011 (1,000 head) | 2010 (pounds) | 2011 (pounds) | 2010 (1,000 pounds) | 2011 (1,000 pounds) |
| Arizona | 120.0 | 110.0 | 6.3 | 6.3 | 750 | 690 |
| California | 490.0 | 470.0 | 6.1 | 6.2 | 3,000 | 2,900 |
| Colorado | 345.0 | 370.0 | 7.2 | 7.0 | 2,500 | 2,600 |
| Idaho | 205.0 | 215.0 | 9.6 | 9.3 | 1,960 | 2,000 |
| Illinois | 46.0 | 45.0 | 7.0 | 6.8 | 320 | 305 |
| Indiana | 37.0 | 40.0 | 6.2 | 6.0 | 230 | 240 |
| Iowa | 200.0 | 190.0 | 5.0 | 5.3 | 1,000 | 1,000 |
| Kansas | 42.0 | 44.0 | 6.5 | 6.5 | 275 | 285 |
| Kentucky | 10.0 | 13.0 | 7.0 | 6.5 | 70 | 85 |
| Michigan | 63.0 | 66.0 | 6.0 | 6.2 | 380 | 410 |
| Minnesota | 130.0 | 140.0 | 6.4 | 6.2 | 830 | 870 |
| Missouri | 50.0 | 50.0 | 6.2 | 6.0 | 310 | 300 |
| Montana | 215.0 | 200.0 | 9.3 | 9.3 | 2,000 | 1,850 |
| Nebraska | 55.0 | 57.0 | 7.0 | 7.2 | 385 | 410 |
| Nevada | 53.0 | 54.0 | 9.8 | 9.9 | 520 | 535 |
| New England ¹ | 39.0 | 34.0 | 6.9 | 6.9 | 270 | 235 |
| New Mexico | 95.0 | 90.0 | 7.8 | 7.8 | 740 | 700 |
| New York | 38.0 | 33.0 | 6.4 | 6.4 | 245 | 210 |
| North Carolina | 7.0 | 6.0 | 5.0 | 5.7 | 35 | 34 |
| North Dakota | 70.0 | 66.0 | 8.1 | 8.2 | 570 | 540 |
| Ohio | 100.0 | 97.0 | 6.3 | 6.0 | 625 | 585 |
| Oklahoma | 30.0 | 27.0 | 5.3 | 5.2 | 160 | 140 |
| Oregon | 174.0 | 166.0 | 6.4 | 6.6 | 1,120 | 1,100 |
| Pennsylvania | 56.0 | 52.0 | 6.7 | 6.8 | 375 | 355 |
| South Dakota | 240.0 | 260.0 | 7.8 | 7.6 | 1,870 | 1,970 |
| Tennessee | 17.0 | 18.0 | 5.9 | 5.8 | 100 | 105 |
| Texas | 490.0 | 360.0 | 7.0 | 7.2 | 3,450 | 2,600 |
| Utah | 260.0 | 275.0 | 8.5 | 8.7 | 2,220 | 2,400 |
| Virginia | 30.0 | 35.0 | 5.5 | 5.7 | 165 | 200 |
| Washington | 50.0 | 45.0 | 7.8 | 7.7 | 390 | 345 |
| West Virginia | 23.0 | 21.0 | 5.4 | 6.0 | 125 | 126 |
| Wisconsin | 70.0 | 61.0 | 7.1 | 7.0 | 500 | 425 |
| Wyoming | 285.0 | 275.0 | 9.1 | 8.9 | 2,600 | 2,450 |
| Other States ² | 45.0 | 45.0 | 6.2 | 6.4 | 280 | 290 |
| United States | 4,180.0 | 4,030.0 | 7.3 | 7.3 | 30,370 | 29,290 |

¹ New England includes Connecticut, Maine, Massachusetts, New Hampshire, Rhode Island, and Vermont.

² Unpublished states.

Wool Price and Value – States and United States: 2010 and 2011

[United States value may not add due to rounding]

| State | Price per pound | | Value ¹ | |
|---------------------------------|-------------------|-------------------|-------------------------|-------------------------|
| | 2010 (dollars) | 2011 (dollars) | 2010 (1,000 dollars) | 2011 (1,000 dollars) |
| Arizona | 0.30 | 0.50 | 225 | 345 |
| California | 1.25 | 1.70 | 3,750 | 4,930 |
| Colorado | 1.49 | 2.15 | 3,725 | 5,590 |
| Idaho | 1.26 | 1.70 | 2,470 | 3,400 |
| Illinois | 0.39 | 0.46 | 125 | 140 |
| Indiana | 0.38 | 0.41 | 87 | 98 |
| Iowa | 0.29 | 0.58 | 290 | 580 |
| Kansas | 0.46 | 0.70 | 127 | 200 |
| Kentucky | 0.50 | 0.55 | 35 | 47 |
| Michigan | 0.55 | 0.60 | 209 | 246 |
| Minnesota | 0.43 | 0.62 | 357 | 539 |
| Missouri | 0.55 | 0.71 | 171 | 213 |
| Montana | 1.60 | 2.40 | 3,200 | 4,440 |
| Nebraska | 0.58 | 0.80 | 223 | 328 |
| Nevada | 1.40 | 1.90 | 728 | 1,017 |
| New England ² | 0.60 | 0.70 | 162 | 165 |
| New Mexico | 1.50 | 1.85 | 1,110 | 1,295 |
| New York | 0.40 | 0.60 | 98 | 126 |
| North Carolina | 0.80 | 1.00 | 28 | 34 |
| North Dakota | 0.90 | 1.40 | 513 | 756 |
| Ohio | 0.28 | 0.56 | 175 | 328 |
| Oklahoma | 0.60 | 0.70 | 96 | 98 |
| Oregon | 0.86 | 1.70 | 963 | 1,870 |
| Pennsylvania | 0.37 | 0.44 | 139 | 156 |
| South Dakota | 1.11 | 1.84 | 2,076 | 3,625 |
| Tennessee | 0.51 | 0.72 | 51 | 76 |
| Texas | 1.58 | 2.21 | 5,451 | 5,746 |
| Utah | 1.20 | 1.90 | 2,664 | 4,560 |
| Virginia | 0.55 | 0.65 | 91 | 130 |
| Washington | 1.50 | 1.65 | 585 | 569 |
| West Virginia | 0.48 | 0.82 | 60 | 103 |
| Wisconsin | 0.40 | 0.70 | 200 | 298 |
| Wyoming | 1.73 | 2.57 | 4,498 | 6,297 |
| Other States ³ | 1.20 | 2.00 | 336 | 580 |
| United States | 1.15 | 1.67 | 35,018 | 48,925 |

¹ Production multiplied by marketing year average price. United States value is the summation of State values.

² New England includes Connecticut, Maine, Massachusetts, New Hampshire, Rhode Island, and Vermont.

³ Unpublished states.

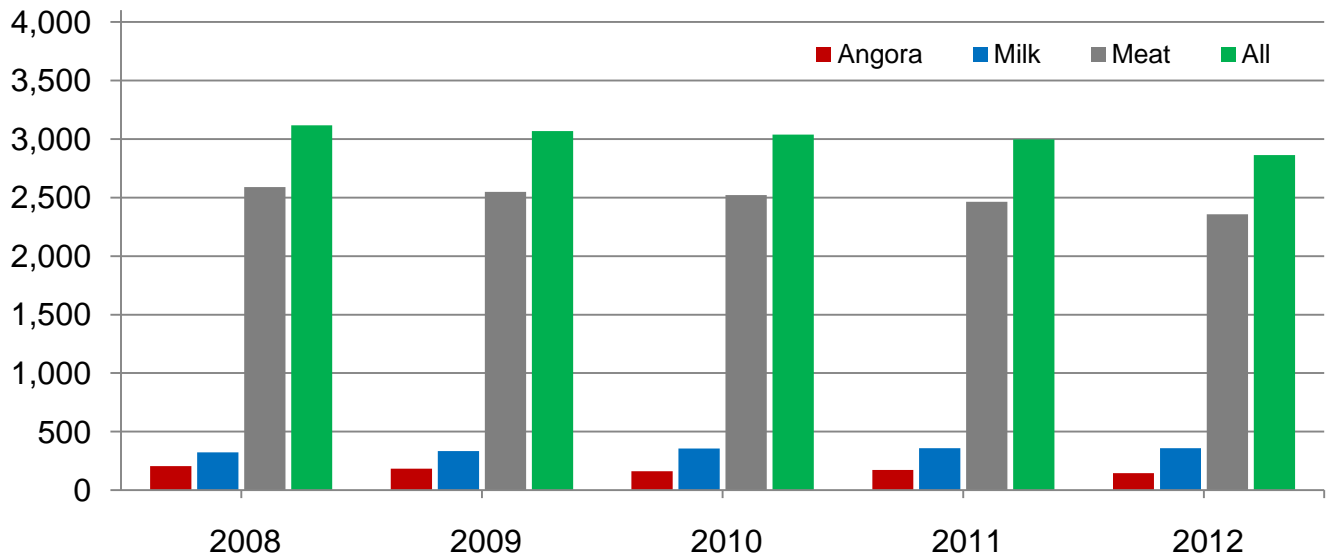
Goat Inventory by Class – United States: January 1, 2011 and 2012

| Class | 2011 | 2012 | 2012 as percent of 2011 |
|---|-----------|-----------|-------------------------|
| | (head) | (head) | (percent) |
| All goats and kids | 2,996,000 | 2,862,000 | 96 |
| All, breeding goats | 2,486,000 | 2,375,000 | 96 |
| Replacement kids - under one year | 462,000 | 421,000 | 91 |
| Does - one year old and older | 1,839,000 | 1,775,000 | 97 |
| Bucks - one year old and older | 185,000 | 179,000 | 97 |
| All, market goats and kids | 510,000 | 487,000 | 95 |
| Kid crop ¹ | 1,911,000 | 1,879,000 | 98 |

¹ Kid crop refers to kids born the previous year.

Goat Inventory – United States: January 1

Thousand head



Angora Goat Inventory by Class – United States: January 1, 2011 and 2012

| Class | 2011 | 2012 | 2012 as percent of 2011 |
|---|---------|---------|-------------------------|
| | (head) | (head) | (percent) |
| Angora goats and kids | 172,000 | 146,000 | 85 |
| Angora, breeding goats | 150,000 | 130,000 | 87 |
| Replacement kids - under one year | 23,000 | 20,000 | 87 |
| Does - one year old and older | 118,000 | 102,000 | 86 |
| Bucks - one year old and older | 9,000 | 8,000 | 89 |
| Angora, market goats and kids | 22,000 | 16,000 | 73 |
| Kid crop ¹ | 80,000 | 81,000 | 101 |

¹ Kid crop refers to kids born the previous year.

Milk Goat Inventory by Class – United States: January 1, 2011 and 2012

| Class | 2011 | 2012 | 2012 as percent of 2011 |
|---|---------|---------|-------------------------|
| | (head) | (head) | (percent) |
| Milk goats and kids | 360,000 | 360,000 | 100 |
| Milk, breeding goats | 325,000 | 324,000 | 100 |
| Replacement kids - under one year | 70,000 | 68,000 | 97 |
| Does - one year old and older | 232,000 | 233,000 | 100 |
| Bucks - one year old and older | 23,000 | 23,000 | 100 |
| Milk, market goats and kids | 35,000 | 36,000 | 103 |
| Kid crop ¹ | 265,000 | 267,000 | 101 |

¹ Kid crop refers to kids born the previous year.

Meat and Other Goat Inventory by Class – United States: January 1, 2011 and 2012

| Class | 2011 | 2012 | 2012 as percent of 2011 |
|---|-----------|-----------|-------------------------|
| | (head) | (head) | (percent) |
| Meat and other goats and kids | 2,464,000 | 2,356,000 | 96 |
| Meat and other, breeding goats | 2,011,000 | 1,921,000 | 96 |
| Replacement kids - under one year | 369,000 | 333,000 | 90 |
| Does - one year old and older | 1,489,000 | 1,440,000 | 97 |
| Bucks - one year old and older | 153,000 | 148,000 | 97 |
| Meat and other, market goats and kids | 453,000 | 435,000 | 96 |
| Kid crop ¹ | 1,566,000 | 1,531,000 | 98 |

¹ Kid crop refers to kids born the previous year.

Angora Goat Inventory – States and United States: January 1, 2011 and 2012

| State | 2011 | 2012 | 2012 as percent of 2011 |
|---------------------------------|---------|---------|-------------------------|
| | (head) | (head) | (percent) |
| Arizona | 25,000 | 23,000 | 92 |
| California | 3,500 | 3,500 | 100 |
| Colorado | 1,000 | 1,000 | 100 |
| Minnesota | 1,000 | 1,000 | 100 |
| Missouri | 1,300 | 1,500 | 115 |
| New England ¹ | 1,300 | 1,100 | 85 |
| New Mexico | 11,500 | 11,500 | 100 |
| Ohio | 1,000 | (D) | (D) |
| Oregon | 2,100 | 2,400 | 114 |
| Texas | 110,000 | 85,000 | 77 |
| Wisconsin | 1,000 | (D) | (D) |
| Other States ² | 13,300 | 16,000 | (X) |
| United States | 172,000 | 146,000 | 85 |

(D) Withheld to avoid disclosing data for individual operations.

(X) Not applicable.

¹ New England includes Connecticut, Maine, Massachusetts, New Hampshire, Rhode Island, and Vermont.

² Unpublished states.

Mohair Production, Price, and Value – States and United States: 2010 and 2011

| State | Goats clipped | | Average clip per goat | | Production | | Price per pound | | Value ¹ | |
|------------------------------|---------------|---------|-----------------------|----------|----------------|----------------|-----------------|-----------|--------------------|-----------------|
| | 2010 | 2011 | 2010 | 2011 | 2010 | 2011 | 2010 | 2011 | 2010 | 2011 |
| | (head) | (head) | (pounds) | (pounds) | (1,000 pounds) | (1,000 pounds) | (dollars) | (dollars) | (1,000 dollars) | (1,000 dollars) |
| Arizona | 23,000 | 23,000 | 5.2 | 4.8 | 120 | 110 | 1.10 | 2.00 | 132 | 220 |
| California | 3,000 | 3,000 | 6.7 | 6.7 | 20 | 20 | 4.25 | 6.00 | 85 | 120 |
| New Mexico | 11,500 | 11,500 | 6.5 | 6.5 | 75 | 75 | 2.50 | 2.60 | 188 | 195 |
| Texas | 120,000 | 90,000 | 6.1 | 5.9 | 730 | 530 | 4.20 | 5.10 | 3,066 | 2,703 |
| Other States ² .. | 23,500 | 21,500 | 6.0 | 6.0 | 140 | 130 | 2.25 | 2.49 | 315 | 324 |
| United States ... | 181,000 | 149,000 | 6.0 | 5.8 | 1,085 | 865 | 3.49 | 4.12 | 3,786 | 3,562 |

¹ Production multiplied by marketing year average price. United States value is summation of State values.

² Unpublished states.

Milk Goat Inventory – States and United States: January 1, 2011 and 2012

| State | 2011 | 2012 | 2012 as percent of 2011 |
|---------------------------------|---------|---------|-------------------------|
| | (head) | (head) | (percent) |
| Alabama | 4,000 | 3,300 | 83 |
| Arizona | 2,000 | 3,000 | 150 |
| Arkansas | 4,800 | 4,700 | 98 |
| California | 38,000 | 41,000 | 108 |
| Colorado | 8,200 | 11,000 | 134 |
| Florida | 5,000 | 6,000 | 120 |
| Georgia | 3,000 | 2,900 | 97 |
| Idaho | 3,500 | 4,000 | 114 |
| Illinois | 4,500 | 3,900 | 87 |
| Indiana | 12,000 | 11,500 | 96 |
| Iowa | 31,000 | 32,500 | 105 |
| Kansas | 4,700 | 5,300 | 113 |
| Kentucky | 5,500 | 7,000 | 127 |
| Louisiana | 1,200 | 1,300 | 108 |
| Maryland | 1,800 | 2,300 | 128 |
| Michigan | 10,800 | 10,000 | 93 |
| Minnesota | 12,000 | 11,500 | 96 |
| Mississippi | 3,000 | 3,100 | 103 |
| Missouri | 11,000 | 9,000 | 82 |
| Montana | 2,600 | 2,500 | 96 |
| Nebraska | 2,900 | 3,100 | 107 |
| New England ¹ | 12,700 | 11,100 | 87 |
| New Jersey | 2,500 | 2,000 | 80 |
| New Mexico | 2,800 | 2,800 | 100 |
| New York | 13,000 | 12,800 | 98 |
| North Carolina | 7,000 | 6,300 | 90 |
| Ohio | 8,000 | 10,000 | 125 |
| Oklahoma | 6,000 | 7,000 | 117 |
| Oregon | 9,100 | 10,700 | 118 |
| Pennsylvania | 16,000 | 15,000 | 94 |
| South Carolina | 2,800 | 3,000 | 107 |
| South Dakota | 2,300 | 2,100 | 91 |
| Tennessee | 7,500 | 9,000 | 120 |
| Texas | 20,000 | 20,000 | 100 |
| Utah | 2,400 | 1,800 | 75 |
| Virginia | 5,900 | 5,200 | 88 |
| Washington | 8,500 | 6,700 | 79 |
| West Virginia | 2,500 | 2,500 | 100 |
| Wisconsin | 50,000 | 44,000 | 88 |
| Wyoming | 1,400 | 1,100 | 79 |
| Other States ² | 8,100 | 8,000 | 99 |
| United States | 360,000 | 360,000 | 100 |

¹ New England includes Connecticut, Maine, Massachusetts, New Hampshire, Rhode Island, and Vermont.

² Unpublished states.

Meat and Other Goat Inventory – States and United States: January 1, 2011 and 2012

| State | 2011 | 2012 | 2012 as percent of 2011 |
|---------------------------------|-----------|-----------|-------------------------|
| | (head) | (head) | (percent) |
| Alabama | 56,500 | 53,500 | 95 |
| Arizona | 35,000 | 29,000 | 83 |
| Arkansas | 48,000 | 53,000 | 110 |
| California | 100,000 | 96,500 | 97 |
| Colorado | 35,000 | 39,000 | 111 |
| Florida | 55,000 | 56,000 | 102 |
| Georgia | 71,000 | 65,100 | 92 |
| Hawaii | 9,000 | 7,700 | 86 |
| Idaho | 12,700 | 12,300 | 97 |
| Illinois | 20,000 | 24,000 | 120 |
| Indiana | 30,400 | 30,000 | 99 |
| Iowa | 25,000 | 27,000 | 108 |
| Kansas | 40,000 | 43,000 | 108 |
| Kentucky | 72,500 | 68,000 | 94 |
| Louisiana | 21,000 | 20,000 | 95 |
| Maryland | 12,000 | 10,600 | 88 |
| Michigan | 14,500 | 18,000 | 124 |
| Minnesota | 25,000 | 23,500 | 94 |
| Mississippi | 28,000 | 27,000 | 96 |
| Missouri | 80,000 | 83,500 | 104 |
| Montana | 7,000 | 6,900 | 99 |
| Nebraska | 22,000 | 20,000 | 91 |
| Nevada | 4,700 | 5,000 | 106 |
| New England ¹ | 13,000 | 12,400 | 95 |
| New Jersey | 9,000 | 7,200 | 80 |
| New Mexico | 15,000 | 13,000 | 87 |
| New York | 30,000 | 27,000 | 90 |
| North Carolina | 85,000 | 72,000 | 85 |
| North Dakota | 2,700 | 2,800 | 104 |
| Ohio | 59,000 | 65,500 | 111 |
| Oklahoma | 91,000 | 91,000 | 100 |
| Oregon | 27,000 | 25,000 | 93 |
| Pennsylvania | 46,000 | 45,500 | 99 |
| South Carolina | 42,500 | 43,500 | 102 |
| South Dakota | 8,500 | 7,800 | 92 |
| Tennessee | 115,000 | 121,000 | 105 |
| Texas | 950,000 | 850,000 | 89 |
| Utah | 12,000 | 12,000 | 100 |
| Virginia | 58,000 | 65,000 | 112 |
| Washington | 26,000 | 25,000 | 96 |
| West Virginia | 24,500 | 23,000 | 94 |
| Wisconsin | 17,000 | 21,000 | 124 |
| Wyoming | 5,500 | 4,700 | 85 |
| Other States ² | 3,000 | 3,000 | 100 |
| United States | 2,464,000 | 2,356,000 | 96 |

¹ New England includes Connecticut, Maine, Massachusetts, New Hampshire, Rhode Island, and Vermont.

² Unpublished states.

Statistical Methodology

Survey Procedures: A random sample of United States producers was surveyed to provide data for these estimates. Survey procedures ensured that all sheep and goat producers, regardless of size, had a chance to be included in the survey. Large producers were sampled more heavily than small operations. About 23,000 operators were contacted during the first half of January by mail, telephone and face-to-face personal interview and 77 percent of the reports were usable. Regardless of when operators responded, they were asked to report inventories as of January 1.

Estimating Procedures: These sheep and goat estimates were prepared by the Agricultural Statistics Board. National and State survey data were reviewed for reasonableness and with estimates from past years. A projected balance sheet for calendar year 2011 was also used. The balance sheet begins with the previous inventory estimate, adds estimates of births and imports, and subtracts estimates of slaughter, exports and deaths. This indicated ending inventory level is compared with the Agricultural Statistics Board estimate for reasonableness.

Revision Policy: Revisions to previous estimates are made to improve the current estimate. Previous year estimates are subject to revision when current estimates are made. Estimates will also be reviewed after data from the Department of Agriculture's five-year Census of Agriculture are available. No revisions will be made after that date.

Reliability: Since all operations raising sheep and goats are not included in the sample, survey estimates are subject to sampling variability. Survey results are also subject to non-sampling errors, such as omissions, duplications, and mistakes in reporting, recording, and processing the data. The effects of these errors cannot be measured directly. They are minimized through rigid quality controls in the data collection process and through a careful review of all reported data for consistency and reasonableness.

To assist users in evaluating reliability of the estimates in this report, the "**Root Mean Square Error**" is shown for selected sheep items in the following table. The "Root Mean Square Error" is a statistical measure based on past performance and is computed using the differences between the first and latest estimates.

The "Root Mean Square Error" for sheep and lamb inventory estimates over the past 10 years is 0.8 percent. This means that chances are 2 out of 3 that the final estimate will not be above or below the current estimate of 5.35 million head by more than 0.8 percent. Chances are 9 out of 10 that the difference will not exceed 1.5 percent.

The "Root Mean Square Error" for sheep shorn over the past 10 years is 0.7 percent. This means that chances are 2 out of 3 that the final estimate will not be above or below the current estimate of 4.03 million head by more than 0.7 percent. Chances are 9 out of 10 that the difference will not exceed 1.3 percent.

Also shown in the table is a 10-year record showing the range between the first inventory estimate and the latest estimate. Using estimates for All Sheep and Lambs as an example, changes between the first inventory estimate and the latest estimate during the past 10 years have averaged 38,000 head, ranging from 0 to 105,000 head. The initial inventory estimate of All Sheep and Lambs has been below the latest estimate 0 times and above the latest estimate 8 times in the last 10 years.

For Sheep and Lambs Shorn, changes between the first inventory estimate and the latest estimate during the past 10 years have averaged 22,000 head, ranging from 0 to 93,000 head. The initial inventory estimate of Sheep and Lambs Shorn has been below the latest estimate 2 times and above 7 times in the last 10 years.

Reliability of January 1 Sheep and Lamb Estimates

[Based on data for the past ten years]

| Item | Root mean square error | 90 percent confidence level | Difference between first and latest estimate | | | | |
|---------------------------|------------------------|-----------------------------|--|----------------|----------------|--------------|--------------|
| | | | Average | Smallest | Largest | Years | |
| | | | | | | Below latest | Above latest |
| | (percent) | (percent) | (1,000 head) | (1,000 head) | (1,000 head) | (number) | (number) |
| All sheep and lambs | 0.8 | 1.5 | 38 | 0 | 105 | 0 | 8 |
| Breeding sheep | 0.8 | 1.5 | 29 | 0 | 74 | 0 | 9 |
| Lamb crop | 2.1 | 3.9 | 67 | 0 | 155 | 2 | 6 |
| Sheep shorn | 0.7 | 1.3 | 22 | 0 | 93 | 2 | 7 |
| | (percent) | (percent) | (1,000 pounds) | (1,000 pounds) | (1,000 pounds) | (number) | (number) |
| Wool production | 0.7 | 1.3 | 157 | 0 | 860 | 1 | 8 |

Information Contacts

Listed below are the commodity specialists in the Livestock Branch of the National Agricultural Statistics Service to contact for additional information. E-mail inquiries may be sent to nass@nass.usda.gov

| | |
|---|----------------|
| Dan Kerestes, Chief, Livestock Branch | (202) 720-3570 |
| Scott Hollis, Head, Livestock Section | (202) 690-2424 |
| Travis Averill – Cattle, Cattle on Feed | (202) 720-3040 |
| Sherry Bertramsen – Livestock Slaughter | (515) 284-4340 |
| Doug Bounds – Hogs and Pigs, Goats | (202) 720-3106 |
| Mike Miller – Milk Production and Milk Cows | (202) 720-3278 |
| Everett Olbert – Dairy Products Prices | (202) 720-4751 |
| Lorie Warren – Dairy Products, Sheep | (202) 690-3236 |

Access to NASS Reports

For your convenience, you may access NASS reports and products the following ways:

- All reports are available electronically, at no cost, on the NASS web site: <http://www.nass.usda.gov>
- Both national and state specific reports are available via a free e-mail subscription. To set-up this free subscription, visit <http://www.nass.usda.gov> and in the “Follow NASS” box under “Receive reports by Email,” click on “National” or “State” to select the reports you would like to receive.
- Printed reports may be purchased from the National Technical Information Service (NTIS) by calling toll-free (800) 999-6779, or (703) 605-6220 if calling from outside the United States or Canada. Accepted methods of payment are Visa, MasterCard, check, or money order.

For more information on NASS surveys and reports, call the NASS Agricultural Statistics Hotline at (800) 727-9540, 7:30 a.m. to 4:00 p.m. ET, or e-mail: nass@nass.usda.gov.

The United States Department of Agriculture (USDA) prohibits discrimination in all its programs and activities on the basis of race, color, national origin, age, disability, and where applicable, sex, marital status, familial status, parental status, religion, sexual orientation, political beliefs, genetic information, reprisal, or because all or a part of an individual's income is derived from any public assistance program. (Not all prohibited bases apply to all programs.) Persons with disabilities who require alternative means for communication of program information (Braille, large print, audiotape, etc.) should contact USDA's TARGET Center at (202) 720-2600 (voice and TDD).

To file a complaint of discrimination, write to USDA, Assistant Secretary for Civil Rights, Office of the Assistant Secretary for Civil Rights, 1400 Independence Avenue, S.W., Stop 9410, Washington, DC 20250-9410, or call toll-free at (866) 632-9992 (English) or (800) 877-8339 (TDD) or (866) 377-8642 (English Federal-relay) or (800) 845-6136 (Spanish Federal-relay). USDA is an equal opportunity provider and employer.



United States Department of Agriculture



Moving Agriculture Forward

USDA – Growing, Innovating, and Celebrating 150 Years

February 23-24, 2012

Crystal Gateway Marriott Hotel • Arlington, Virginia

Early Registration \$375 until January 23, 2012

\$425 after January 23

To register, go to:

www.usda.gov/oce/forum

— more than 80 speakers —

Program at a Glance is available online