



Turkey Hatchery

Released November 12, 2004, by the National Agricultural Statistics Service (NASS), Agricultural Statistics Board, U.S. Department of Agriculture. For information on *Turkey Hatchery* call John Lange at (202) 720-0585, office hours 7:30 a.m. to 4:00 p.m. ET.

Eggs in Incubators on November Down 4 Percent

Turkey eggs in incubators on November 1, 2004, in the United States totaled 27.4 million, 4 percent below November 1 a year ago. Eggs in incubators were 2 percent above the October 2004 total of 26.7 million eggs. Regional changes from the previous year were: East North Central down 4 percent, West North Central up 4 percent, North and South Atlantic down 11 percent, South Central down 19 percent, and West down slightly.

Poults Placed During October Down 9 Percent From Last Year

The 20.8 million poults placed during October 2004 in the United States were down 9 percent from the number placed during the same month a year ago. Placements were down 2 percent from the September 2004 total of 21.3 million. Regional changes from the previous year were: East North Central down 10 percent, West North Central down 12 percent, North and South Atlantic down 5 percent, South Central down 15 percent, and West up 4 percent.

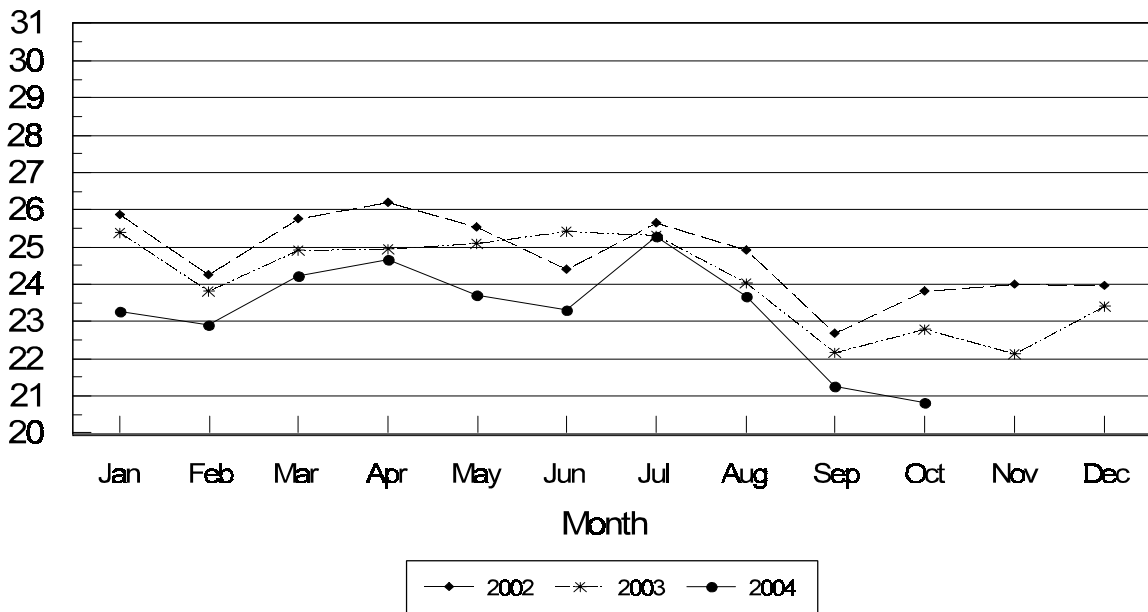
**Turkey Hatchery Production: Monthly Poultry Placements,
United States, 2003-05 ¹**

Month	Total All Breeds		Percent of Previous Year	Cumulative Total		Percent of Previous Year
	2003-04	2004-05		2003-04	2004-05	
	<i>1,000</i>	<i>1,000</i>	<i>Percent</i>	<i>1,000</i>	<i>1,000</i>	<i>Percent</i>
Sep	22,171	21,268	96	22,171	21,268	96
Oct	22,805	20,806	91	44,976	42,074	94
Nov	22,155			67,131		
Dec	23,424			90,555		
Jan	23,273			113,828		
Feb	22,905			136,733		
Mar	24,215			160,948		
Apr	24,664			185,612		
May	23,692			209,304		
Jun	23,291			232,595		
Jul	25,275			257,870		
Aug	23,674			281,544		

¹ Excludes exported poult.

Turkey Poults Placed United States 2002-2004

Million Poults



**Eggs in Incubators: First of Month by Region
and United States, November 2004 with Comparisons**

Geographic Division	Nov 1 2003	Oct 1 2004	Nov 1 2004	Percent of Previous Year	Percent of Previous Month
	<i>1,000</i>	<i>1,000</i>	<i>1,000</i>	<i>Percent</i>	<i>Percent</i>
E N Central	4,534	4,345	4,368	96	101
W N Central	10,169	10,533	10,568	104	100
N & S Atlantic	9,564	8,092	8,541	89	106
S Central	2,447	2,079	1,981	81	95
West	1,936	1,695	1,927	100	114
US	28,650	26,744	27,385	96	102

* Revised.

**Poults Placements: Entire Month by Region and United States,
October 2004 with Comparisons¹**

Geographic Division	Oct 2003	Sep 2004	Oct 2004	Percent of Previous Year	Percent of Previous Month
	<i>1,000</i>	<i>1,000</i>	<i>1,000</i>	<i>Percent</i>	<i>Percent</i>
E N Central	3,359	3,125	3,009	90	96
W N Central	9,141	8,200	8,074	88	98
N & S Atlantic	7,091	6,668	6,743	95	101
S Central	1,934	1,839	1,649	85	90
West	1,280	1,436	1,331	104	93
US	22,805	21,268	20,806	91	98

* Revised.

¹ Regional placements refer to poults placed from hatcheries located in that region, and not the actual location of the birds after placement.

Regional Listing:

North Atlantic: CT, ME, MA, NH, NJ, NY, PA, RI, VT.

East North Central: IL, IN, MI, OH, WI.

West North Central: IA, KS, MN, MO, NE, ND, SD.

South Atlantic: DE, FL, GA, MD, NC, SC, VA, WV.

South Central: AL, AR, KY, LA, MS, OK, TN, TX.

West: AZ, CA, CO, ID, MT, NM, NV, OR, UT, WA, WY.

Turkey Hatchery Estimates

Data Sources: Primary data for the "**Turkey Hatchery**" report are collected from weekly and/or monthly questionnaires sent to turkey hatcheries in 18 States. An attempt is made to collect hatchery information from all known hatcheries in these 18 monthly States. Approximately 40 hatcheries are contacted each month.

Revisions: Revisions are generally the result of late or corrected data and are usually less than 1 percent at the U.S. level. Revisions to the previous month are published in the monthly "**Turkey Hatchery**" report, while annual revisions are published in the "**Hatchery Production - Annual Summary**" report at the end of the marketing year.

Procedures and Reliability: Hatcheries are mailed a questionnaire and given adequate time to respond by mail. Those that do not respond by mail are called by phone. Diligent effort is made to ensure that all hatcheries are accounted for in the estimate. An allowance is made for all non-reporting hatcheries.

Accumulated poult placements beginning on September 1 and ending on August 31 are shown in the monthly "**Turkey Hatchery**" report. This time period corresponds with the placements of poults which will reach maturity and be available for slaughter during the calendar year. Only regional and U.S. level estimates are published due to the limited number of hatcheries involved. Regional placement data in the report refer to placement of poults from hatcheries located in that region, not the actual location of the birds after placement. Poults exported out of the U.S. and poults imported from outside of the U.S. are not included in the report.

Turkey hatchery estimates are based on a census of operating hatcheries and, therefore, have no sampling error. However, they may be subject to errors such as omission, duplication, and mistakes in reporting, recording, and processing the data. These errors are minimized through strict quality controls in the edit and summarization process, and a careful review of all reported data for consistency and reasonableness.

States in the monthly estimating program are Arkansas, California, Indiana, Iowa, Massachusetts, Michigan, Minnesota, Missouri, North Carolina, Ohio, Oklahoma, Pennsylvania, Rhode Island, Texas, Utah, Virginia, West Virginia, and Wisconsin.

The next *Turkey Hatchery* report will be released at 3 p.m. ET on December 14, 2004.

ACCESS TO REPORTS!!

For your convenience, there are several ways to obtain NASS reports, data products, and services:

INTERNET ACCESS

All NASS reports are available free of charge on the worldwide Internet. For access, connect to the Internet and go to the NASS Home Page at: www.usda.gov/nass/. Select "Today's Reports" or Publications and then Reports Calendar or Publications and then Search, by Title or Subject.

E-MAIL SUBSCRIPTION

All NASS reports are available by subscription free of charge direct to your e-mail address. Starting with the NASS Home Page at www.usda.gov/nass/, click on **Publications**, then click on the **Subscribe by E-mail** button which takes you to the page describing e-mail delivery of reports. Finally, click on **Go to the Subscription Page** and follow the instructions.

PRINTED REPORTS OR DATA PRODUCTS

CALL OUR TOLL-FREE ORDER DESK: 800-999-6779 (U.S. and Canada)
Other areas, please call 703-605-6220 FAX: 703-605-6900
(Visa, MasterCard, check, or money order acceptable for payment.)

ASSISTANCE

For **assistance** with general agricultural statistics or further information about NASS or its products or services, contact the **Agricultural Statistics Hotline** at **800-727-9540**, 7:30 a.m. to 4:00 p.m. ET, or e-mail: nass@nass.usda.gov.

The United States Department of Agriculture (USDA) prohibits discrimination in all its programs on the basis of race, color, national origin, gender, religion, age, disability, political beliefs, sexual orientation, and marital or family status. (Not all prohibited bases apply to all programs.) Persons with disabilities who require alternative means for communication of program information (braille, large print, audiotape, etc.) should contact the USDA's TARGET Center at 202-720-2600 (voice and TDD).

To file a complaint of discrimination, write USDA, Director, Office of Civil Rights, Room 326-W, Whitten Building, 1400 Independence Avenue, SW, Washington, D.C., 20250-9410, or call 202-720-5964 (voice or TDD). USDA is an equal opportunity provider and employer.