

Released April 13, 2005, by the National Agricultural Statistics Service (NASS), Agricultural Statistics Board, U.S. Department of Agriculture. For information on *Turkey Hatchery* call John Lange at (202) 720-0585, office hours 7:30 a.m. to 4:00 p.m. ET.

## Eggs in Incubators on April 1 Down 4 Percent From Last Year

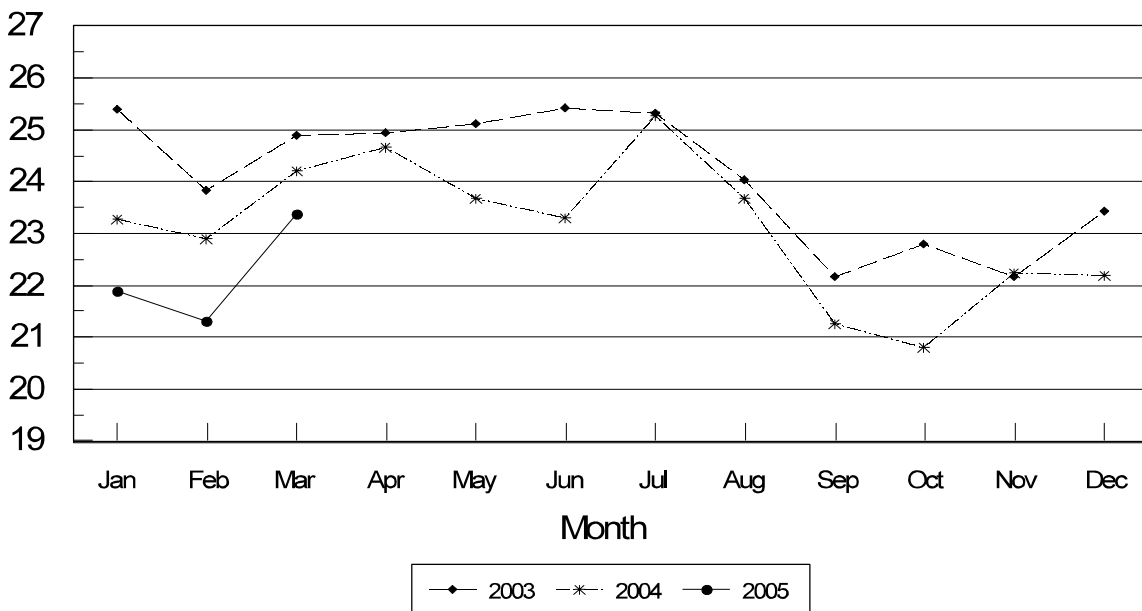
Turkey eggs in incubators on April 1, 2005, in the United States totaled 29.1 million, 4 percent below April 1 a year ago. Eggs in incubators were 4 percent above the March 1, 2005 total of 28.1 million eggs. Regional changes from the previous year were: East North Central down slightly, West North Central down 1 percent, North and South Atlantic down 11 percent, South Central down 13 percent, and West up 11 percent.

## Poults Placed During March Down 3 Percent From Last Year

The 23.4 million poults placed during March 2005 in the United States were down 3 percent from the number placed during the same month a year ago. Placements were up 10 percent from February 2005. Regional changes from the previous year were: East North Central down 8 percent, West North Central up 1 percent, North and South Atlantic down 8 percent, South Central down 14 percent, and West up 15 percent.

## Turkey Poults Placed United States 2003-2005

Million Poults



**Turkey Hatchery Production: Monthly Poultry Placements,  
United States, 2003-05<sup>1</sup>**

Month	Total All Breeds		Percent of Previous Year	Cumulative Total		Percent of Previous Year
	2003-04	2004-05		2003-04	2004-05	
	<i>1,000</i>	<i>1,000</i>	<i>Percent</i>	<i>1,000</i>	<i>1,000</i>	<i>Percent</i>
Sep	22,171	21,268	96	22,171	21,268	96
Oct	22,805	20,806	91	44,976	42,074	94
Nov	22,155	22,232	100	67,131	64,306	96
Dec	23,424	22,205	95	90,555	86,511	96
Jan	23,273	21,887	94	113,828	108,398	95
Feb	22,905	21,321	93	136,733	129,719	95
Mar	24,215	23,376	97	160,948	153,095	95
Apr	24,664			185,612		
May	23,692			209,304		
Jun	23,291			232,595		
Jul	25,013			257,608		
Aug	23,674			281,282		

\* Revised.

<sup>1</sup> Excludes exported poult.

**Eggs in Incubators: First of Month by Region  
and United States, April 2005 with Comparisons**

Geographic Division	Apr 1 2004	Mar 1 2005	Apr 1 2005	Percent of Previous Year	Percent of Previous Month
	<i>1,000</i>	<i>1,000</i>	<i>1,000</i>	<i>Percent</i>	<i>Percent</i>
E N Central	4,772	4,517	4,758	100	105
W N Central	11,025	10,938	10,893	99	100
N & S Atlantic	9,644	7,879	8,543	89	108
S Central	2,475	*2,282	2,152	87	94
West	2,447	2,435	2,713	111	111
US	30,363	*28,051	29,059	96	104

\* Revised.

**Poult Placements: Entire Month by Region and United States,  
March 2005 with Comparisons<sup>1</sup>**

Geographic Division	Mar 2004	Feb 2005	Mar 2005	Percent of Previous Year	Percent of Previous Month
	<i>1,000</i>	<i>1,000</i>	<i>1,000</i>	<i>Percent</i>	<i>Percent</i>
E N Central	3,708	3,339	3,420	92	102
W N Central	9,139	8,316	9,257	101	111
N & S Atlantic	7,621	6,275	6,989	92	111
S Central	2,056	1,599	1,758	86	110
West	1,691	1,792	1,952	115	109
US	24,215	21,321	23,376	97	110

\* Revised.

<sup>1</sup> Regional placements refer to poult placed from hatcheries located in that region, and not the actual location of the birds after placement.

## Turkey Hatchery Estimates

**Data Sources:** Primary data for the "**Turkey Hatchery**" report are collected from weekly and/or monthly questionnaires sent to turkey hatcheries in 18 States. An attempt is made to collect hatchery information from all known hatcheries in these 18 monthly States. Approximately 40 hatcheries are contacted each month.

**Revisions:** Revisions are generally the result of late or corrected data and are usually less than 1 percent at the U.S. level. Revisions to the previous month are published in the monthly "**Turkey Hatchery**" report, while annual revisions are published in the "**Hatchery Production - Annual Summary**" report at the end of the marketing year.

**Procedures and Reliability:** Hatcheries are mailed a questionnaire and given adequate time to respond by mail. Those that do not respond by mail are called by phone. Diligent effort is made to ensure that all hatcheries are accounted for in the estimate. An allowance is made for all non-reporting hatcheries.

Accumulated poult placements beginning on September 1 and ending on August 31 are shown in the monthly "**Turkey Hatchery**" report. This time period corresponds with the placements of poult which will reach maturity and be available for slaughter during the calendar year. Only regional and U.S. level estimates are published due to the limited number of hatcheries involved. Regional placement data in the report refer to placement of poult from hatcheries located in that region, not the actual location of the birds after placement. Poults exported out of the U.S. and poults imported from outside of the U.S. are not included in the report.

Turkey hatchery estimates are based on a census of operating hatcheries and, therefore, have no sampling error. However, they may be subject to errors such as omission, duplication, and mistakes in reporting, recording, and processing the data. These errors are minimized through strict quality controls in the edit and summarization process, and a careful review of all reported data for consistency and reasonableness.

States in the monthly estimating program are Arkansas, California, Indiana, Iowa, Massachusetts, Michigan, Minnesota, Missouri, North Carolina, Ohio, Oklahoma, Pennsylvania, Rhode Island, Texas, Utah, Virginia, West Virginia, and Wisconsin.

### Regional Listing:

North Atlantic: CT, ME, MA, NH, NJ, NY, PA, RI, VT.  
East North Central: IL, IN, MI, OH, WI.  
West North Central: IA, KS, MN, MO, NE, ND, SD.  
South Atlantic: DE, FL, GA, MD, NC, SC, VA, WV.  
South Central: AL, AR, KY, LA, MS, OK, TN, TX.  
West: AZ, CA, CO, ID, MT, NM, NV, OR, UT, WA, WY.

## ACCESS TO REPORTS!!

---

For your convenience, there are several ways to obtain NASS reports, data products, and services:

### INTERNET ACCESS

All NASS reports are available free of charge on the worldwide Internet. For access, connect to the Internet and go to the NASS Home Page at: [www.usda.gov/nass/](http://www.usda.gov/nass/). Select "Today's Reports" or Publications and then Reports Calendar or Publications and then Search, by Title or Subject.

### E-MAIL SUBSCRIPTION

All NASS reports are available by subscription free of charge direct to your e-mail address. Starting with the NASS Home Page at [www.usda.gov/nass/](http://www.usda.gov/nass/), click on **Publications**, then click on the **Subscribe by E-mail** button which takes you to the page describing e-mail delivery of reports. Finally, click on **Go to the Subscription Page** and follow the instructions.

-----

### PRINTED REPORTS OR DATA PRODUCTS

**CALL OUR TOLL-FREE ORDER DESK: 800-999-6779 (U.S. and Canada)**  
**Other areas, please call 703-605-6220      FAX: 703-605-6900**  
**(Visa, MasterCard, check, or money order acceptable for payment.)**

-----

### ASSISTANCE

For **assistance** with general agricultural statistics or further information about NASS or its products or services, contact the **Agricultural Statistics Hotline** at **800-727-9540**, 7:30 a.m. to 4:00 p.m. ET, or e-mail: [nass@nass.usda.gov](mailto:nass@nass.usda.gov).

The U.S. Department of Agriculture (USDA) prohibits discrimination in all its programs and activities on the basis of race, color, national origin, sex, religion, age, disability, political beliefs, sexual orientation, and marital or family status. (Not all prohibited bases apply to all programs.) Persons with disabilities who require alternative means for communication of program information (Braille, large print, audiotape, etc.) should contact USDA's TARGET Center at 202-720-2600 (voice and TDD).

To file a complaint of discrimination, write USDA, Director, Office of Civil Rights, Room 326-W, Whitten Building, 14th and Independence Avenue, SW, Washington, DC 20250-9410 or call 202-720-5964 (voice and TDD). USDA is an equal opportunity provider and employer.