



NASS

FACT FINDERS FOR AGRICULTURE
UNITED STATES DEPARTMENT OF AGRICULTURE

Washington, D.C.

Turkey Hatchery

Released December 14, 2005, by the National Agricultural Statistics Service (NASS), Agricultural Statistics Board, U.S. Department of Agriculture. For information on *Turkey Hatchery* call John Lange at (202) 720-0585, office hours 7:30 a.m. to 4:00 p.m. ET.

Eggs in Incubators on December 1 Up 2 Percent

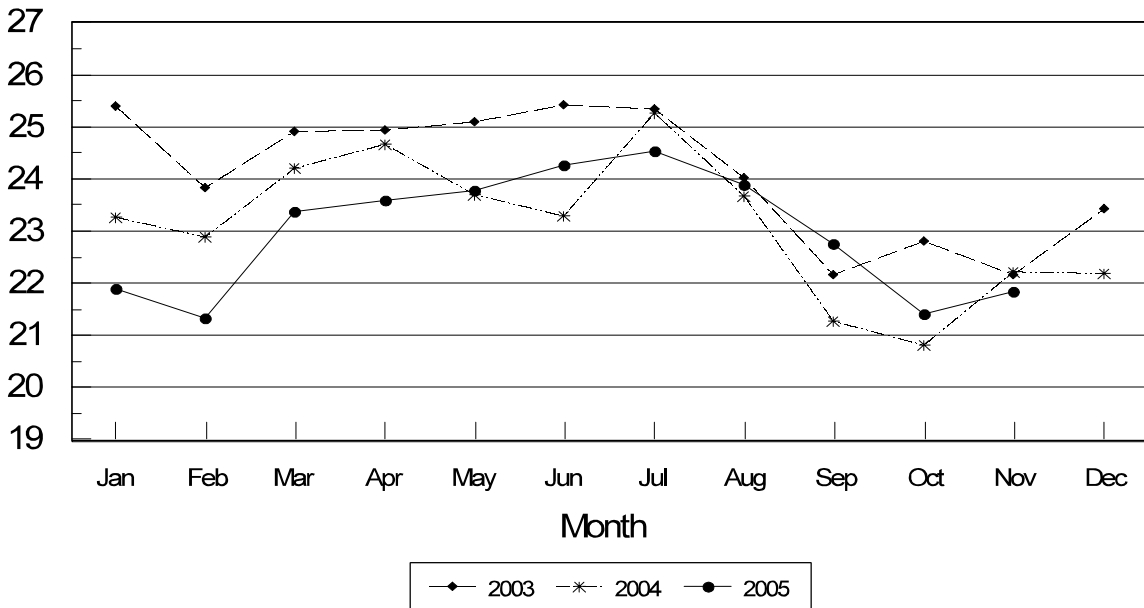
Turkey eggs in incubators on December 1, 2005, in the United States totaled 28.3 million, up 2 percent from December 1 a year ago. Eggs in incubators were 3 percent above the November 1, 2005 total of 27.4 million eggs. Regional changes from the previous year were: East North Central up 3 percent, West North Central up 1 percent, North and South Atlantic up 15 percent, South Central down 32 percent, and West down 1 percent.

Poults Placed During November Down 2 Percent From Last Year

The 21.8 million poults placed during November 2005 in the United States were down 2 percent from the number placed during the same month a year ago. Placements were up 2 percent from October 2005. Regional changes from the previous year were: East North Central up 10 percent, West North Central up 3 percent, North and South Atlantic down 8 percent, South Central down 15 percent, and West down 9 percent.

Turkey Poults Placed United States 2003-2005

Million Poults



**Turkey Hatchery Production: Monthly Poults Placements,
United States, 2004-06 ¹**

Month	Total All Breeds		Percent of Previous Year	Cumulative Total		Percent of Previous Year
	2004-05	2005-06		2004-05	2005-06	
	<i>1,000</i>	<i>1,000</i>	<i>Percent</i>	<i>1,000</i>	<i>1,000</i>	<i>Percent</i>
Sep	21,268	22,747	107	21,268	22,747	107
Oct	20,806	*21,400	103	42,074	44,147	105
Nov	22,232	21,847	98	64,306	65,994	103
Dec	22,230			86,536		
Jan	21,887			108,423		
Feb	21,321			129,744		
Mar	23,376			153,120		
Apr	23,587			176,707		
May	23,781			200,488		
Jun	24,253			224,741		
Jul	24,533			249,274		
Aug	23,899			273,173		

* Revised.

¹ Excludes exported poults.

**Eggs in Incubators: First of Month by Region
and United States, December 2005 with Comparisons**

Geographic Division	Dec 1 2004	Nov 1 2005	Dec 1 2005	Percent of Previous Year	Percent of Previous Month
	<i>1,000</i>	<i>1,000</i>	<i>1,000</i>	<i>Percent</i>	<i>Percent</i>
E N Central	4,576	4,500	4,691	103	104
W N Central	11,045	10,719	11,140	101	104
N & S Atlantic	7,677	8,624	8,845	115	103
S Central	2,421	*1,894	1,653	68	87
West	1,989	1,709	1,973	99	115
US	27,708	*27,446	28,302	102	103

* Revised.

**Poults Placements: Entire Month by Region and United States,
November 2005 with Comparisons ¹**

Geographic Division	Nov 2004	Oct 2005	Nov 2005	Percent of Previous Year	Percent of Previous Month
	<i>1,000</i>	<i>1,000</i>	<i>1,000</i>	<i>Percent</i>	<i>Percent</i>
E N Central	3,144	3,441	3,472	110	101
W N Central	8,382	8,650	8,656	103	100
N & S Atlantic	7,344	6,871	6,770	92	99
S Central	1,827	*1,132	1,545	85	136
West	1,535	1,306	1,404	91	108
US	22,232	*21,400	21,847	98	102

* Revised.

¹ Regional placements refer to poults placed from hatcheries located in that region, and not the actual location of the birds after placement.

**Turkey Hatchery Production
2004 and Revised 2005**

Month	United States			East North Central	West North Central	North & South Atlantic	South Central	West
	2004	2005	2005 As Percent Of 2004					
Eggs in Incubators, First of Month								
	<i>1,000</i>	<i>1,000</i>	<i>Percent</i>	<i>1,000</i>	<i>1,000</i>	<i>1,000</i>	<i>1,000</i>	<i>1,000</i>
All Breeds								
Jan	28,394	27,994	99	4,469	10,620	8,448	2,077	2,380
Feb	28,774	27,015	94	4,604	10,337	7,836	2,025	2,213
Mar	29,613	28,051	95	4,517	10,938	7,879	2,282	2,435
Apr	30,363	29,105	96	4,763	10,893	8,543	2,152	2,754
May	29,871	29,340	98	4,506	11,435	8,851	2,035	2,513
Jun	29,910	30,365	102	4,841	11,405	9,056	2,355	2,708
Jul	30,979	30,554	99	5,013	11,278	8,745	2,086	3,432
Aug	30,603	30,399	99	4,864	11,617	9,198	2,113	2,607
Sep	28,288	28,186	100	4,601	11,046	8,585	1,895	2,059
Oct	26,744	26,538	99	4,408	10,753	8,341	1,427	1,609
Nov	28,275	27,446	97	4,500	10,719	8,624	1,894	1,709
Dec	27,708	28,302	102	4,691	11,140	8,845	1,653	1,973
Poults Placed ¹								
	<i>1,000</i>	<i>1,000</i>	<i>Percent</i>	<i>1,000</i>	<i>1,000</i>	<i>1,000</i>	<i>1,000</i>	<i>1,000</i>
All Breeds								
Jan	23,273	21,887	94	3,353	8,298	6,667	1,653	1,916
Feb	22,905	21,321	93	3,339	8,316	6,275	1,599	1,792
Mar	24,215	23,376	97	3,420	9,257	6,989	1,758	1,952
Apr	24,664	23,587	96	3,404	9,224	7,172	1,693	2,094
May	23,692	23,781	100	3,398	9,474	7,278	1,606	2,025
Jun	23,291	24,253	104	3,872	9,232	7,261	1,850	2,038
Jul	25,013	24,533	98	3,625	9,151	7,614	1,549	2,594
Aug	23,674	23,899	101	3,843	9,394	7,078	1,665	1,919
Sep	21,268	22,747	107	3,424	9,230	6,979	1,557	1,557
Oct	20,806	21,400	103	3,441	8,650	6,871	1,132	1,306
Nov	22,232	21,847	98	3,472	8,656	6,770	1,545	1,404
Dec	22,230							
Total	277,238							

¹ Regional placements refer to poults placed from hatcheries located in that region, and not the actual location of the birds after placement. Excludes exported poults.

Regional Listing:

North Atlantic: CT, ME, MA, NH, NJ, NY, PA, RI, VT.
 East North Central: IL, IN, MI, OH, WI.
 West North Central: IA, KS, MN, MO, NE, ND, SD.
 South Atlantic: DE, FL, GA, MD, NC, SC, VA, WV.
 South Central: AL, AR, KY, LA, MS, OK, TN, TX.
 West: AZ, CA, CO, ID, MT, NM, NV, OR, UT, WA, WY.

Turkey Hatchery Estimates

Data Sources: Primary data for the "**Turkey Hatchery**" report are collected from weekly and/or monthly questionnaires sent to turkey hatcheries in 18 States. An attempt is made to collect hatchery information from all known hatcheries in these 18 monthly States. Approximately 40 hatcheries are contacted each month.

Revisions: Revisions are generally the result of late or corrected data and are usually less than 1 percent at the U.S. level. Revisions to the previous month are published in the monthly "**Turkey Hatchery**" report, while annual revisions are published in the "**Hatchery Production - Annual Summary**" report at the end of the marketing year.

Procedures and Reliability: Hatcheries are mailed a questionnaire and given adequate time to respond by mail. Those that do not respond by mail are called by phone. Diligent effort is made to ensure that all hatcheries are accounted for in the estimate. An allowance is made for all non-reporting hatcheries.

Accumulated poult placements beginning on September 1 and ending on August 31 are shown in the monthly "**Turkey Hatchery**" report. This time period corresponds with the placements of poults which will reach maturity and be available for slaughter during the calendar year. Only regional and U.S. level estimates are published due to the limited number of hatcheries involved. Regional placement data in the report refer to placement of poults from hatcheries located in that region, not the actual location of the birds after placement. Poults exported out of the U.S. and poults imported from outside of the U.S. are not included in the report.

Turkey hatchery estimates are based on a census of operating hatcheries and, therefore, have no sampling error. However, they may be subject to errors such as omission, duplication, and mistakes in reporting, recording, and processing the data. These errors are minimized through strict quality controls in the edit and summarization process, and a careful review of all reported data for consistency and reasonableness.

States in the monthly estimating program are Arkansas, California, Indiana, Iowa, Massachusetts, Michigan, Minnesota, Missouri, North Carolina, Ohio, Oklahoma, Pennsylvania, Rhode Island, Texas, Utah, Virginia, West Virginia, and Wisconsin.

ACCESS TO REPORTS!!

For your convenience, there are several ways to obtain NASS reports, data products, and services:

INTERNET ACCESS

All NASS reports are available free of charge on the worldwide Internet. For access, connect to the Internet and go to the NASS Home Page at: www.usda.gov/nass/. Select "Today's Reports" or Publications and then Reports Calendar or Publications and then Search, by Title or Subject.

E-MAIL SUBSCRIPTION

All NASS reports are available by subscription free of charge direct to your e-mail address. Starting with the NASS Home Page at www.usda.gov/nass/, click on **Publications**, then click on the **Subscribe by E-mail** button which takes you to the page describing e-mail delivery of reports. Finally, click on **Go to the Subscription Page** and follow the instructions.

PRINTED REPORTS OR DATA PRODUCTS

CALL OUR TOLL-FREE ORDER DESK: 800-999-6779 (U.S. and Canada)
Other areas, please call 703-605-6220 FAX: 703-605-6900
(Visa, MasterCard, check, or money order acceptable for payment.)

ASSISTANCE

For **assistance** with general agricultural statistics or further information about NASS or its products or services, contact the **Agricultural Statistics Hotline** at **800-727-9540**, 7:30 a.m. to 4:00 p.m. ET, or e-mail: nass@nass.usda.gov.

The U.S. Department of Agriculture (USDA) prohibits discrimination in all its programs and activities on the basis of race, color, national origin, age, disability, and where applicable, sex, marital status, familial status, parental status, religion, sexual orientation, genetic information, political beliefs, reprisal, or because all or part of an individual's income is derived from any public assistance program. (Not all prohibited bases apply to all programs.) Persons with disabilities who require alternative means for communication of program information (Braille, large print, audiotape, etc.) should contact USDA's TARGET Center at (202) 720-2600 (voice and TDD).

To file a complaint of discrimination, write to USDA, Director, Office of Civil Rights, 1400 Independence Avenue, S.W., Washington, D.C. 20250-9410, or call (800) 795-3272 (voice) or (202) 720-6382 (TDD). USDA is an equal opportunity provider and employer.