



NASS

FACT FINDERS FOR AGRICULTURE
UNITED STATES DEPARTMENT OF AGRICULTURE

Washington, D.C.

Turkey Hatchery

Released April 13, 2006, by the National Agricultural Statistics Service (NASS), Agricultural Statistics Board, U.S. Department of Agriculture. For information on *Turkey Hatchery* call John Lange at (202) 720-0585, office hours 7:30 a.m. to 4:00 p.m. ET.

Eggs in Incubators on April 1 Up 3 Percent

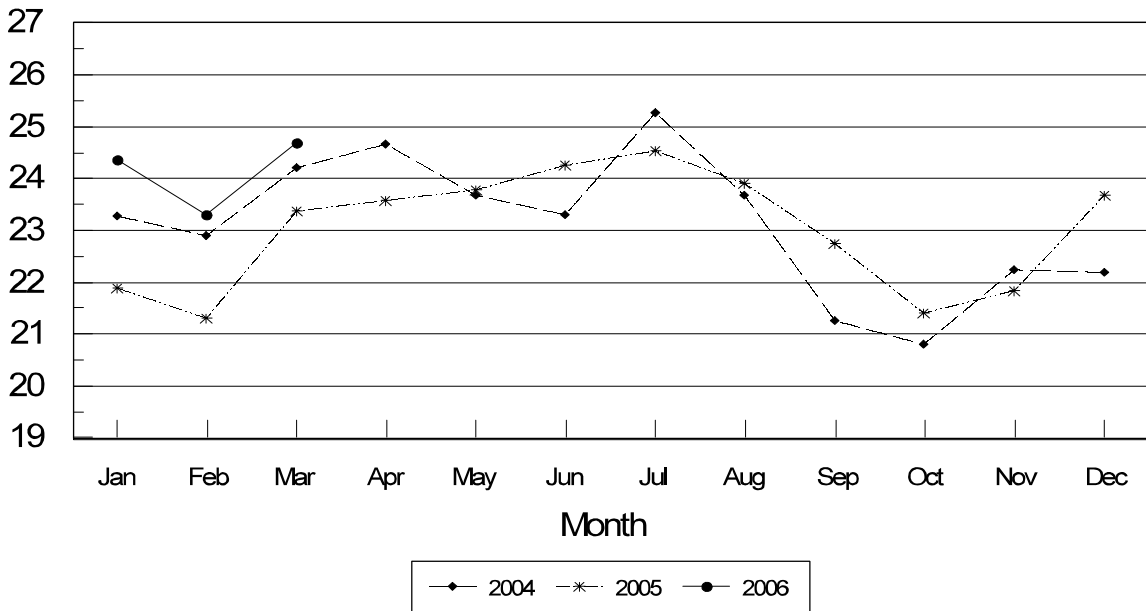
Turkey eggs in incubators on April 1, 2006, in the United States totaled 29.9 million, up 3 percent from April 1 a year ago. Eggs in incubators were down slightly from the March 1, 2006 total of 29.9 million eggs. Regional changes from the previous year were: East North Central up 2 percent, West North Central down slightly, North and South Atlantic up 12 percent, and South Central and West combined, down 6 percent.

Poults Placed During March Up 6 Percent From Last Year

The 24.7 million poults placed during March 2006 in the United States were up 6 percent from the number placed during the same month a year ago. Placements were also up 6 percent from February 2006. Regional changes from the previous year were: East North Central up 9 percent, West North Central up 2 percent, North and South Atlantic up 17 percent, and South Central and West were down 12 percent.

Turkey Poults Placed United States 2004-2006

Million Poults



**Turkey Hatchery Production: Monthly Poultry Placements,
United States, 2004-2006 ¹**

Month	Total All Breeds		Percent of Previous Year	Cumulative Total		Percent of Previous Year
	2004-05	2005-06		2004-05	2005-06	
	<i>1,000</i>	<i>1,000</i>	<i>Percent</i>	<i>1,000</i>	<i>1,000</i>	<i>Percent</i>
Sep	21,268	22,747	107	21,268	22,747	107
Oct	20,806	21,400	103	42,074	44,147	105
Nov	22,232	21,850	98	64,306	65,997	103
Dec	22,230	23,673	106	86,536	89,670	104
Jan	21,887	24,364	111	108,423	114,034	105
Feb	21,321	*23,296	109	129,744	137,330	106
Mar	23,376	24,674	106	153,120	162,004	106
Apr	23,587			176,707		
May	23,781			200,488		
Jun	24,253			224,741		
Jul	24,533			249,274		
Aug	23,899			273,173		

* Revised.

¹ Excludes exported poult.

**Eggs in Incubators: First of Month by Region
and United States, April 2006 with Comparisons**

Geographic Division	Apr 1 2005	Mar 1 2006	Apr 1 2006	Percent of Previous Year	Percent of Previous Month
	<i>1,000</i>	<i>1,000</i>	<i>1,000</i>	<i>Percent</i>	<i>Percent</i>
E N Central	4,763	4,663	4,880	102	105
W N Central	10,893	11,443	10,885	100	95
N & S Atlantic ¹	8,543	9,535	9,527	112	100
S Central & West ¹	4,906	*4,273	4,598	94	108
US	29,105	*29,914	29,890	103	100

* Revised.

¹ Regions combined to avoid disclosure of individual operations.

**Poult Placements: Entire Month by Region and United States,
March 2006 with Comparisons ¹**

Geographic Division	Mar 2005	Feb 2006	Mar 2006	Percent of Previous Year	Percent of Previous Month
	<i>1,000</i>	<i>1,000</i>	<i>1,000</i>	<i>Percent</i>	<i>Percent</i>
E N Central	3,420	3,501	3,743	109	107
W N Central	9,257	9,050	9,471	102	105
N & S Atlantic ²	6,989	7,693	8,180	117	106
S Central & West ²	3,710	*3,052	3,280	88	107
US	23,376	*23,296	24,674	106	106

* Revised.

¹ Regional placements refer to poult placed from hatcheries located in that region, and not the actual location of the birds after placement.

² Regions combined to avoid disclosure of individual operations.

**Turkey Hatchery Production: Eggs in Incubators and Poults Placements,
by Region and United States, Monthly, 2004-2005**

Month	United States			East North Central	West North Central	North & South Atlantic	South Central	West
	2004	2005	2005 As Percent Of 2004					
	2005							
Eggs in Incubators, First of Month								
	<i>1,000</i>	<i>1,000</i>	<i>Percent</i>	<i>1,000</i>	<i>1,000</i>	<i>1,000</i>	<i>1,000</i>	<i>1,000</i>
All Breeds								
Jan	28,394	27,994	99	4,469	10,620	8,448	2,077	2,380
Feb	28,774	27,015	94	4,604	10,337	7,836	2,025	2,213
Mar	29,613	28,051	95	4,517	10,938	7,879	2,282	2,435
Apr	30,363	29,105	96	4,763	10,893	8,543	2,152	2,754
May	29,871	29,340	98	4,506	11,435	8,851	2,035	2,513
Jun	29,910	30,365	102	4,841	11,405	9,056	2,355	2,708
Jul	30,979	30,554	99	5,013	11,278	8,745	2,086	3,432
Aug	30,603	30,399	99	4,864	11,617	9,198	2,113	2,607
Sep	28,288	28,186	100	4,601	11,046	8,585	1,895	2,059
Oct	26,744	26,538	99	4,408	10,753	8,341	1,427	1,609
Nov	28,275	27,446	97	4,500	10,719	8,624	1,894	1,709
Dec	27,708	28,477	103	4,694	11,140	8,845	1,825	1,973
Poults Placed ¹								
	<i>1,000</i>	<i>1,000</i>	<i>Percent</i>	<i>1,000</i>	<i>1,000</i>	<i>1,000</i>	<i>1,000</i>	<i>1,000</i>
All Breeds								
Jan	23,273	21,887	94	3,353	8,298	6,667	1,653	1,916
Feb	22,905	21,321	93	3,339	8,316	6,275	1,599	1,792
Mar	24,215	23,376	97	3,420	9,257	6,989	1,758	1,952
Apr	24,664	23,587	96	3,404	9,224	7,172	1,693	2,094
May	23,692	23,781	100	3,398	9,474	7,278	1,606	2,025
Jun	23,291	24,253	104	3,872	9,232	7,261	1,850	2,038
Jul	25,013	24,533	98	3,625	9,151	7,614	1,549	2,594
Aug	23,674	23,899	101	3,843	9,394	7,078	1,665	1,919
Sep	21,268	22,747	107	3,424	9,230	6,979	1,557	1,557
Oct	20,806	21,400	103	3,441	8,650	6,871	1,132	1,306
Nov	22,232	21,850	98	3,475	8,656	6,770	1,545	1,404
Dec	22,230	23,673	106	3,683	9,229	7,649	1,510	1,602
Total	277,263	276,307	100	42,277	108,111	84,603	19,117	22,199

¹ Regional placements refer to poults placed from hatcheries located in that region, and not the actual location of the birds after placement. Excludes exported poults.

Regions:

E North Central = IL, IN, MI, OH, WI.

W North Central = IA, KS, MN, MO, NE, ND, SD.

North Atlantic = CT, ME, MA, NH, NJ, NY, PA, RI, VT.

South Atlantic = DE, FL, GA, MD, NC, SC, VA, WV.

South Central = AL, AR, KY, LA, MS, OK, TN, TX.

West = AK, AZ, CA, CO, HI, ID, MT, NM, NV, OR, UT, WA, WY.

Turkey Hatchery Estimates

Data Sources: Primary data for the "**Turkey Hatchery**" report are collected from weekly and/or monthly questionnaires sent to turkey hatcheries in 16 States. An attempt is made to collect hatchery information from all known hatcheries in these 16 monthly States. Approximately 30 hatcheries are contacted each month.

Revisions: Revisions are generally the result of late or corrected data and are usually less than 1 percent at the U.S. level. Revisions to the previous month are published in the monthly "**Turkey Hatchery**" report, while annual revisions are published in the "**Hatchery Production - Annual Summary**" report at the end of the marketing year.

Procedures and Reliability: Hatcheries are mailed a questionnaire and given adequate time to respond by mail. Those that do not respond by mail are called by phone. Diligent effort is made to ensure that all hatcheries are accounted for in the estimate. An allowance is made for all non-reporting hatcheries.

Accumulated poult placements beginning on September 1 and ending on August 31 are shown in the monthly "**Turkey Hatchery**" report. This time period corresponds with the placements of poult which will reach maturity and be available for slaughter during the calendar year. Only regional and U.S. level estimates are published due to the limited number of hatcheries involved. Regional placement data in the report refer to placement of poult from hatcheries located in that region, not the actual location of the birds after placement. Poults exported out of the U.S. and poults imported from outside of the U.S. are not included in the report.

Turkey hatchery estimates are based on a census of operating hatcheries and, therefore, have no sampling error. However, they may be subject to errors such as omission, duplication, and mistakes in reporting, recording, and processing the data. These errors are minimized through strict quality controls in the edit and summarization process, and a careful review of all reported data for consistency and reasonableness.

States in the monthly estimating program are Arkansas, California, Indiana, Massachusetts, Michigan, Minnesota, Missouri, North Carolina, Ohio, Oklahoma, Pennsylvania, Rhode Island, Utah, Virginia, West Virginia, and Wisconsin.

ACCESS TO REPORTS!!

For your convenience, there are several ways to obtain NASS reports, data products, and services:

INTERNET ACCESS

All NASS reports are available free of charge on the worldwide Internet. For access, connect to the Internet and go to the NASS Home Page at: www.nass.usda.gov.

E-MAIL SUBSCRIPTION

All NASS reports are available by subscription free of charge direct to your e-mail address. Starting with the NASS Home Page at www.nass.usda.gov, under the right navigation, *Receive reports by Email*, click on **National** or **State**. Follow the instructions on the screen.

PRINTED REPORTS OR DATA PRODUCTS

CALL OUR TOLL-FREE ORDER DESK: 800-999-6779 (U.S. and Canada)
Other areas, please call 703-605-6220 FAX: 703-605-6900
(Visa, MasterCard, check, or money order acceptable for payment.)

ASSISTANCE

For **assistance** with general agricultural statistics or further information about NASS or its products or services, contact the **Agricultural Statistics Hotline** at **800-727-9540**, 7:30 a.m. to 4:00 p.m. ET, or e-mail: nass@nass.usda.gov.

The U.S. Department of Agriculture (USDA) prohibits discrimination in all its programs and activities on the basis of race, color, national origin, age, disability, and where applicable, sex, marital status, familial status, parental status, religion, sexual orientation, genetic information, political beliefs, reprisal, or because all or part of an individual's income is derived from any public assistance program. (Not all prohibited bases apply to all programs.) Persons with disabilities who require alternative means for communication of program information (Braille, large print, audiotape, etc.) should contact USDA's TARGET Center at (202) 720-2600 (voice and TDD).

To file a complaint of discrimination, write to USDA, Director, Office of Civil Rights, 1400 Independence Avenue, S.W., Washington, D.C. 20250-9410, or call (800) 795-3272 (voice) or (202) 720-6382 (TDD). USDA is an equal opportunity provider and employer.