



NASS

FACT FINDERS FOR AGRICULTURE
UNITED STATES DEPARTMENT OF AGRICULTURE

Washington, D.C.

Turkey Hatchery

Released July 13, 2006, by the National Agricultural Statistics Service (NASS), Agricultural Statistics Board, U.S. Department of Agriculture. For information on *Turkey Hatchery* call John Lange at (202) 720-0585, office hours 7:30 a.m. to 4:00 p.m. ET.

Eggs in Incubators on July 1 Up 5 Percent From Last Year

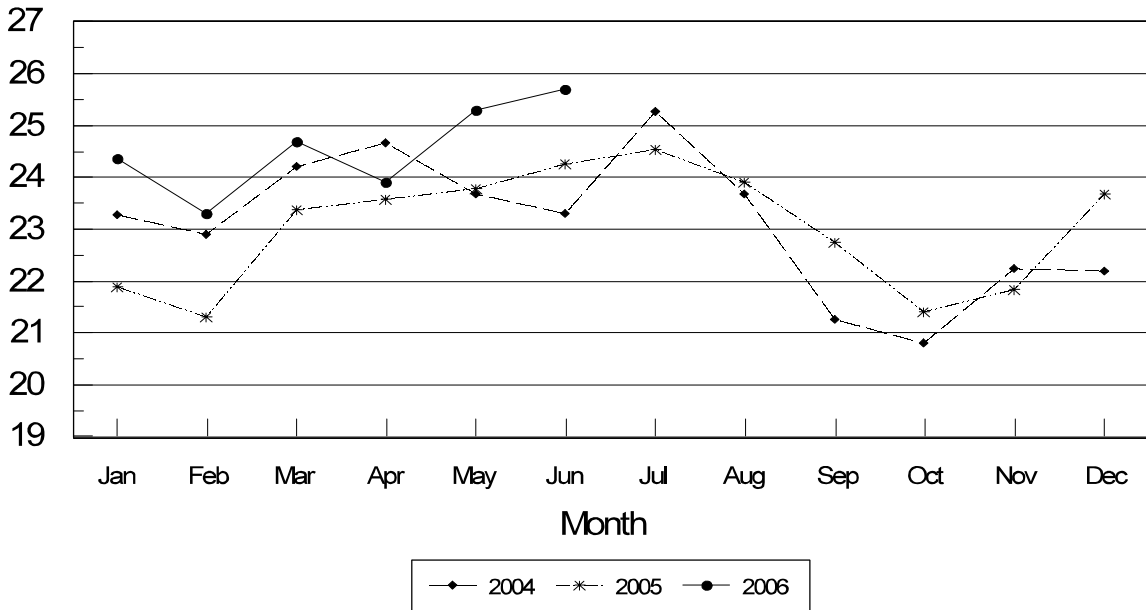
Turkey eggs in incubators on July 1, 2006, in the United States totaled 32.2 million, up 5 percent from July 1 a year ago. Eggs in incubators were up 2 percent from the June 1, 2006 total of 31.6 million eggs. Regional changes from the previous year were: East North Central up slightly, West North Central up 2 percent, North and South Atlantic up 16 percent, and South Central and West combined, up 1 percent.

Poults Placed During June Up 6 Percent From Last Year

The 25.7 million poults placed during June 2006 in the United States were up 6 percent from the number placed during the same month a year ago. Placements were 2 percent above May 2006. Regional changes from the previous year were: East North Central up 1 percent, West North Central up 5 percent, North and South Atlantic up 18 percent, and South Central and West were down 9 percent.

Turkey Poults Placed United States 2004-2006

Million Poults



**Turkey Hatchery Production: Monthly Poulth Placements,
United States, 2004-2006 ¹**

Month	Total All Breeds		Percent of Previous Year	Cumulative Total		Percent of Previous Year
	2004-05	2005-06		2004-05	2005-06	
	<i>1,000</i>	<i>1,000</i>	<i>Percent</i>	<i>1,000</i>	<i>1,000</i>	<i>Percent</i>
Sep	21,268	22,747	107	21,268	22,747	107
Oct	20,806	21,400	103	42,074	44,147	105
Nov	22,232	21,850	98	64,306	65,997	103
Dec	22,230	23,673	106	86,536	89,670	104
Jan	21,887	24,364	111	108,423	114,034	105
Feb	21,321	23,296	109	129,744	137,330	106
Mar	23,376	24,659	105	153,120	161,989	106
Apr	23,587	23,902	101	176,707	185,891	105
May	23,781	25,313	106	200,488	211,204	105
Jun	24,253	25,743	106	224,741	236,947	105
Jul	24,533			249,274		
Aug	23,899			273,173		

¹ Excludes exported poulth.

**Eggs in Incubators: First of Month by Region
and United States, July 2006 with Comparisons**

Geographic Division	Jul 1 2005	Jun 1 2006	Jul 1 2006	Percent of Previous Year	Percent of Previous Month
	<i>1,000</i>	<i>1,000</i>	<i>1,000</i>	<i>Percent</i>	<i>Percent</i>
E N Central	5,013	4,990	5,017	100	101
W N Central	11,278	11,928	11,452	102	96
N & S Atlantic ¹	8,745	*10,193	10,118	116	99
S Central & West ¹	5,518	4,528	5,596	101	124
US	30,554	*31,639	32,183	105	102

* Revised.

¹ Regions combined to avoid disclosure of individual operations.

**Poulth Placements: Entire Month by Region and United States,
June 2006 with Comparisons ¹**

Geographic Division	Jun 2005	May 2006	Jun 2006	Percent of Previous Year	Percent of Previous Month
	<i>1,000</i>	<i>1,000</i>	<i>1,000</i>	<i>Percent</i>	<i>Percent</i>
E N Central	3,872	3,943	3,923	101	99
W N Central	9,232	9,798	9,709	105	99
N & S Atlantic ²	7,261	8,200	8,578	118	105
S Central & West ²	3,888	3,372	3,533	91	105
US	24,253	25,313	25,743	106	102

¹ Regional placements refer to poulth placed from hatcheries located in that region, and not the actual location of the birds after placement.

² Regions combined to avoid disclosure of individual operations.

Turkey Hatchery Estimates

Data Sources: Primary data for the "**Turkey Hatchery**" report are collected from weekly and/or monthly questionnaires sent to turkey hatcheries in 16 States. An attempt is made to collect hatchery information from all known hatcheries in these 16 monthly States. Approximately 30 hatcheries are contacted each month.

Revisions: Revisions are generally the result of late or corrected data and are usually less than 1 percent at the U.S. level. Revisions to the previous month are published in the monthly "**Turkey Hatchery**" report, while annual revisions are published in the "**Hatchery Production - Annual Summary**" report at the end of the marketing year.

Procedures and Reliability: Hatcheries are mailed a questionnaire and given adequate time to respond by mail. Those that do not respond by mail are called by phone. Diligent effort is made to ensure that all hatcheries are accounted for in the estimate. An allowance is made for all non-reporting hatcheries.

Accumulated poult placements beginning on September 1 and ending on August 31 are shown in the monthly "**Turkey Hatchery**" report. This time period corresponds with the placements of poult which will reach maturity and be available for slaughter during the calendar year. Only regional and U.S. level estimates are published due to the limited number of hatcheries involved. Regional placement data in the report refer to placement of poult from hatcheries located in that region, not the actual location of the birds after placement. Poults exported out of the U.S. and poults imported from outside of the U.S. are not included in the report.

Turkey hatchery estimates are based on a census of operating hatcheries and, therefore, have no sampling error. However, they may be subject to errors such as omission, duplication, and mistakes in reporting, recording, and processing the data. These errors are minimized through strict quality controls in the edit and summarization process, and a careful review of all reported data for consistency and reasonableness.

States in the monthly estimating program are Arkansas, California, Indiana, Massachusetts, Michigan, Minnesota, Missouri, North Carolina, Ohio, Oklahoma, Pennsylvania, Rhode Island, Utah, Virginia, West Virginia, and Wisconsin.

Regional Listing:

North Atlantic: CT, ME, MA, NH, NJ, NY, PA, RI, VT.
East North Central: IL, IN, MI, OH, WI.
West North Central: IA, KS, MN, MO, NE, ND, SD.
South Atlantic: DE, FL, GA, MD, NC, SC, VA, WV.
South Central: AL, AR, KY, LA, MS, OK, TN, TX.
West: AZ, CA, CO, ID, MT, NM, NV, OR, UT, WA, WY.

Information Contacts

Listed below are the commodity specialists in the Livestock Branch of the National Agricultural Statistics Service to contact for additional information.

Dan Kerestes, Chief, Livestock Branch	(202) 720-3570
Darin Jantzi, Head, Poultry and Specialty Commodities Section	(202) 720-3570
David Colwell - Cold Storage	(202) 720-8784
Fleming Gibson - Egg Products, Poultry Slaughter, Catfish Processing, Mink	(202) 690-3237
John Lange - Turkeys Raised, Turkey Hatchery, Catfish Production, Trout Production, Census of Aquaculture	(202) 720-0585
Sharyn Lavender - Layers, Eggs	(202) 720-3244
Jody Roberts - Broiler Hatchery, Chicken Hatchery, Honey	(202) 690-8632

ACCESS TO REPORTS!!

For your convenience, there are several ways to obtain NASS reports, data products, and services:

INTERNET ACCESS

All NASS reports are available free of charge on the worldwide Internet. For access, connect to the Internet and go to the NASS Home Page at: **www.nass.usda.gov**.

E-MAIL SUBSCRIPTION

All NASS reports are available by subscription free of charge direct to your e-mail address. Starting with the NASS Home Page at **www.nass.usda.gov**, under the right navigation, *Receive reports by Email*, click on **National** or **State**. Follow the instructions on the screen.

PRINTED REPORTS OR DATA PRODUCTS

CALL OUR TOLL-FREE ORDER DESK: 800-999-6779 (U.S. and Canada)
Other areas, please call 703-605-6220 FAX: 703-605-6900
(Visa, MasterCard, check, or money order acceptable for payment.)

ASSISTANCE

For **assistance** with general agricultural statistics or further information about NASS or its products or services, contact the **Agricultural Statistics Hotline** at **800-727-9540**, 7:30 a.m. to 4:00 p.m. ET, or e-mail: **nass@nass.usda.gov**.

The U.S. Department of Agriculture (USDA) prohibits discrimination in all its programs and activities on the basis of race, color, national origin, age, disability, and where applicable, sex, marital status, familial status, parental status, religion, sexual orientation, genetic information, political beliefs, reprisal, or because all or part of an individual's income is derived from any public assistance program. (Not all prohibited bases apply to all programs.) Persons with disabilities who require alternative means for communication of program information (Braille, large print, audiotope, etc.) should contact USDA's TARGET Center at (202) 720-2600 (voice and TDD).

To file a complaint of discrimination, write to USDA, Director, Office of Civil Rights, 1400 Independence Avenue, S.W., Washington, D.C. 20250-9410, or call (800) 795-3272 (voice) or (202) 720-6382 (TDD). USDA is an equal opportunity provider and employer.