



NASS

FACT FINDERS FOR AGRICULTURE
UNITED STATES DEPARTMENT OF AGRICULTURE

Washington, D.C.

Turkey Hatchery

Released August 14, 2006, by the National Agricultural Statistics Service (NASS), Agricultural Statistics Board, U.S. Department of Agriculture. For information on *Turkey Hatchery* call John Lange at (202) 720-0585, office hours 7:30 a.m. to 4:00 p.m. ET.

Eggs in Incubators on August 1 Up 1 Percent From Last Year

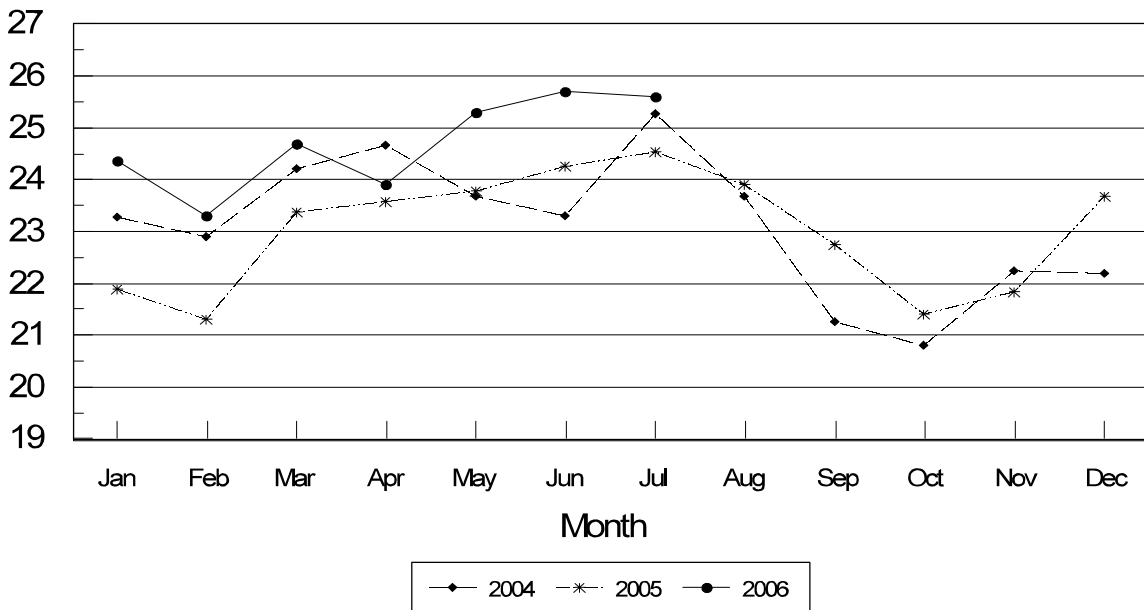
Turkey eggs in incubators on August 1, 2006, in the United States totaled 30.7 million, up 1 percent from August 1 a year ago. Eggs in incubators were down 5 percent from the July 1, 2006 total of 32.2 million eggs. Regional changes from the previous year were: East North Central up slightly, West North Central up 3 percent, North and South Atlantic up 2 percent, and South Central and West combined, down 4 percent.

Poults Placed During July Up 4 Percent From Last Year

The 25.6 million poults placed during July 2006 in the United States were up 4 percent from the number placed during the same month a year ago. Placements were 1 percent below June 2006. Regional changes from the previous year were: East North Central up 2 percent, West North Central up 2 percent, North and South Atlantic up 9 percent, and South Central and West were up 3 percent.

Turkey Poults Placed United States 2004-2006

Million Poults



**Turkey Hatchery Production: Monthly Poultry Placements,
United States, 2004-2006¹**

Month	Total All Breeds		Percent of Previous Year	Cumulative Total		Percent of Previous Year
	2004-05	2005-06		2004-05	2005-06	
	<i>1,000</i>	<i>1,000</i>	<i>Percent</i>	<i>1,000</i>	<i>1,000</i>	<i>Percent</i>
Sep	21,268	22,747	107	21,268	22,747	107
Oct	20,806	21,400	103	42,074	44,147	105
Nov	22,232	21,850	98	64,306	65,997	103
Dec	22,230	23,673	106	86,536	89,670	104
Jan	21,887	24,364	111	108,423	114,034	105
Feb	21,321	23,296	109	129,744	137,330	106
Mar	23,376	*24,692	106	153,120	162,022	106
Apr	23,587	23,902	101	176,707	185,924	105
May	23,781	25,313	106	200,488	211,237	105
Jun	24,253	*25,764	106	224,741	237,001	105
Jul	24,533	25,575	104	249,274	262,576	105
Aug	23,899			273,173		

* Revised.

¹ Excludes exported poult.

**Eggs in Incubators: First of Month by Region
and United States, August 2006 with Comparisons**

Geographic Division	Aug 1 2005	Jul 1 2006	Aug 1 2006	Percent of Previous Year	Percent of Previous Month
	<i>1,000</i>	<i>1,000</i>	<i>1,000</i>	<i>Percent</i>	<i>Percent</i>
E N Central	4,864	5,017	4,876	100	97
W N Central	11,617	11,452	11,941	103	104
N & S Atlantic ¹	9,198	10,118	9,362	102	93
S Central & West ¹	4,720	5,596	4,521	96	81
US	30,399	32,183	30,700	101	95

* Revised.

¹ Regions combined to avoid disclosure of individual operations.

**Poult Placements: Entire Month by Region and United States,
July 2006 with Comparisons¹**

Geographic Division	Jul 2005	Jun 2006	Jul 2006	Percent of Previous Year	Percent of Previous Month
	<i>1,000</i>	<i>1,000</i>	<i>1,000</i>	<i>Percent</i>	<i>Percent</i>
E N Central	3,625	3,923	3,712	102	95
W N Central	9,151	9,709	9,296	102	96
N & S Atlantic ²	7,614	8,578	8,311	109	97
S Central & West ²	4,143	*3,554	4,256	103	120
US	24,533	*25,764	25,575	104	99

* Revised.

¹ Regional placements refer to poult placed from hatcheries located in that region, and not the actual location of the birds after placement.

² Regions combined to avoid disclosure of individual operations.

**Turkey Hatchery Production
2005 and Revised 2006**

Month	United States			East North Central	West North Central	North & South Atlantic	South Central & West
	2005	2006	2006 As Percent Of 2005				
2006							
Eggs in Incubators, First of Month							
	<i>1,000</i>	<i>1,000</i>	<i>Percent</i>	<i>1,000</i>	<i>1,000</i>	<i>1,000</i>	<i>1,000</i>
All Breeds							
Jan	27,994	29,773	106	4,616	11,360	9,407	4,390
Feb	27,015	30,077	111	4,819	11,226	9,971	4,061
Mar	28,051	29,914	107	4,663	11,443	9,535	4,273
Apr	29,105	*30,104	103	4,880	10,885	9,727	*4,612
May	29,340	31,582	108	5,030	11,922	10,321	4,309
Jun	30,365	31,639	104	4,990	11,928	10,193	4,528
Jul	30,554	32,183	105	5,017	11,452	10,118	5,596
Aug	30,399	30,700	101	4,876	11,941	9,362	4,521
Sep	28,186						
Oct	26,538						
Nov	27,446						
Dec	28,477						
Poults Placed ¹							
	<i>1,000</i>	<i>1,000</i>	<i>Percent</i>	<i>1,000</i>	<i>1,000</i>	<i>1,000</i>	<i>1,000</i>
All Breeds							
Jan	21,887	24,364	111	3,510	9,352	7,945	3,557
Feb	21,321	23,296	109	3,501	9,050	7,693	3,052
Mar	23,376	*24,692	106	3,743	9,471	8,180	*3,298
Apr	23,587	23,902	101	3,630	8,670	7,978	3,624
May	23,781	25,313	106	3,943	9,798	8,200	3,372
Jun	24,253	*25,764	106	3,923	9,709	8,578	*3,554
Jul	24,533	25,575	104	3,712	9,296	8,311	4,256
Aug	23,899						
Sep	22,747						
Oct	21,400						
Nov	21,850						
Dec	23,673						
Total	276,307						

* Revised.

¹ Regional placements refer to poults placed from hatcheries located in that region, and not the actual location of the birds after placement. Excludes exported poults.

Turkey Hatchery Estimates

Data Sources: Primary data for the "**Turkey Hatchery**" report are collected from weekly and/or monthly questionnaires sent to turkey hatcheries in 16 States. An attempt is made to collect hatchery information from all known hatcheries in these 16 monthly States. Approximately 30 hatcheries are contacted each month.

Revisions: Revisions are generally the result of late or corrected data and are usually less than 1 percent at the U.S. level. Revisions to the previous month are published in the monthly "**Turkey Hatchery**" report, while annual revisions are published in the "**Hatchery Production - Annual Summary**" report at the end of the marketing year.

Procedures and Reliability: Hatcheries are mailed a questionnaire and given adequate time to respond by mail. Those that do not respond by mail are called by phone. Diligent effort is made to ensure that all hatcheries are accounted for in the estimate. An allowance is made for all non-reporting hatcheries.

Accumulated poult placements beginning on September 1 and ending on August 31 are shown in the monthly "**Turkey Hatchery**" report. This time period corresponds with the placements of poults which will reach maturity and be available for slaughter during the calendar year. Only regional and U.S. level estimates are published due to the limited number of hatcheries involved. Regional placement data in the report refer to placement of poults from hatcheries located in that region, not the actual location of the birds after placement. Poults exported out of the U.S. and poults imported from outside of the U.S. are not included in the report.

Turkey hatchery estimates are based on a census of operating hatcheries and, therefore, have no sampling error. However, they may be subject to errors such as omission, duplication, and mistakes in reporting, recording, and processing the data. These errors are minimized through strict quality controls in the edit and summarization process, and a careful review of all reported data for consistency and reasonableness.

States in the monthly estimating program are Arkansas, California, Indiana, Massachusetts, Michigan, Minnesota, Missouri, North Carolina, Ohio, Oklahoma, Pennsylvania, Rhode Island, Utah, Virginia, West Virginia, and Wisconsin.

Regional Listing:

North Atlantic: CT, ME, MA, NH, NJ, NY, PA, RI, VT.

East North Central: IL, IN, MI, OH, WI.

West North Central: IA, KS, MN, MO, NE, ND, SD.

South Atlantic: DE, FL, GA, MD, NC, SC, VA, WV.

South Central: AL, AR, KY, LA, MS, OK, TN, TX.

West: AZ, CA, CO, ID, MT, NM, NV, OR, UT, WA, WY.

ACCESS TO REPORTS!!

For your convenience, there are several ways to obtain NASS reports, data products, and services:

INTERNET ACCESS

All NASS reports are available free of charge on the worldwide Internet. For access, connect to the Internet and go to the NASS Home Page at: www.nass.usda.gov.

E-MAIL SUBSCRIPTION

All NASS reports are available by subscription free of charge direct to your e-mail address. Starting with the NASS Home Page at www.nass.usda.gov, under the right navigation, *Receive reports by Email*, click on **National** or **State**. Follow the instructions on the screen.

PRINTED REPORTS OR DATA PRODUCTS

CALL OUR TOLL-FREE ORDER DESK: 800-999-6779 (U.S. and Canada)
Other areas, please call 703-605-6220 FAX: 703-605-6900
(Visa, MasterCard, check, or money order acceptable for payment.)

ASSISTANCE

For **assistance** with general agricultural statistics or further information about NASS or its products or services, contact the **Agricultural Statistics Hotline** at **800-727-9540**, 7:30 a.m. to 4:00 p.m. ET, or e-mail: nass@nass.usda.gov.

The U.S. Department of Agriculture (USDA) prohibits discrimination in all its programs and activities on the basis of race, color, national origin, age, disability, and where applicable, sex, marital status, familial status, parental status, religion, sexual orientation, genetic information, political beliefs, reprisal, or because all or part of an individual's income is derived from any public assistance program. (Not all prohibited bases apply to all programs.) Persons with disabilities who require alternative means for communication of program information (Braille, large print, audiotape, etc.) should contact USDA's TARGET Center at (202) 720-2600 (voice and TDD).

To file a complaint of discrimination, write to USDA, Director, Office of Civil Rights, 1400 Independence Avenue, S.W., Washington, D.C. 20250-9410, or call (800) 795-3272 (voice) or (202) 720-6382 (TDD). USDA is an equal opportunity provider and employer.