



# NASS

FACT FINDERS FOR AGRICULTURE  
UNITED STATES DEPARTMENT OF AGRICULTURE

Washington, D.C.

# Turkey Hatchery

Released September 13, 2006, by the National Agricultural Statistics Service (NASS), Agricultural Statistics Board, U.S. Department of Agriculture. For information on *Turkey Hatchery* call Fleming Gibson at (202) 690-3237, office hours 7:30 a.m. to 4:00 p.m. ET.

## Eggs in Incubators on September 1 Up 5 Percent From Last Year

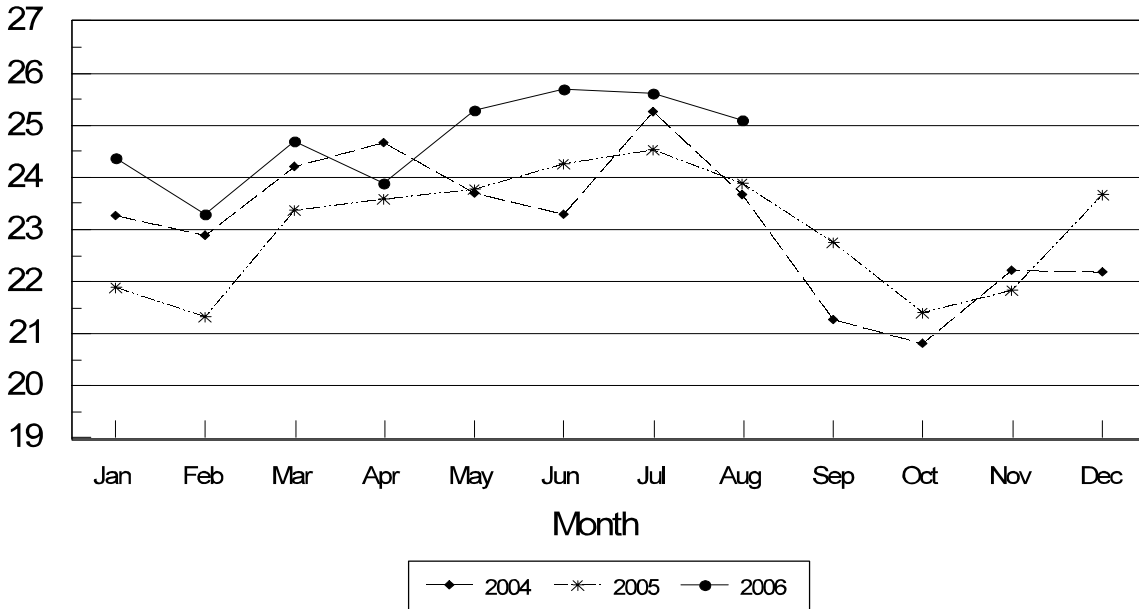
Turkey eggs in incubators on September 1, 2006, in the United States totaled 29.5 million, up 5 percent from September 1 a year ago. Eggs in incubators were down 4 percent from the August 1, 2006 total of 30.8 million eggs. Regional changes from the previous year were: East North Central up 5 percent, West North Central up 3 percent, North and South Atlantic up 7 percent, and South Central and West combined, up 5 percent.

## Poults Placed During August Up 5 Percent From Last Year

The 25.1 million poults placed during August 2006 in the United States were up 5 percent from the number placed during the same month a year ago. Placements were 2 percent below July 2006. Regional changes from the previous year were: East North Central up 2 percent, West North Central up 5 percent, North and South Atlantic up 11 percent, and South Central and West were down 4 percent.

## Turkey Poults Placed United States 2004-2006

Million Poults



**Turkey Hatchery Production: Monthly Poultry Placements,  
United States, 2004-2006 <sup>1</sup>**

Month	Total All Breeds		Percent of Previous Year	Cumulative Total		Percent of Previous Year
	2004-05	2005-06		2004-05	2005-06	
	<i>1,000</i>	<i>1,000</i>	<i>Percent</i>	<i>1,000</i>	<i>1,000</i>	<i>Percent</i>
Sep	21,268	22,747	107	21,268	22,747	107
Oct	20,806	21,400	103	42,074	44,147	105
Nov	22,232	21,850	98	64,306	65,997	103
Dec	22,230	23,673	106	86,536	89,670	104
Jan	21,887	24,364	111	108,423	114,034	105
Feb	21,321	23,296	109	129,744	137,330	106
Mar	23,376	24,692	106	153,120	162,022	106
Apr	23,587	23,902	101	176,707	185,924	105
May	23,781	25,313	106	200,488	211,237	105
Jun	24,253	25,764	106	224,741	237,001	105
Jul	24,533	*25,631	104	249,274	262,632	105
Aug	23,899	25,089	105	273,173	287,721	105

\* Revised.

<sup>1</sup> Excludes exported poult.

**Eggs in Incubators: First of Month by Region  
and United States, September 2006 with Comparisons**

Geographic Division	Sep 1 2005	Aug 1 2006	Sep 1 2006	Percent of Previous Year	Percent of Previous Month
	<i>1,000</i>	<i>1,000</i>	<i>1,000</i>	<i>Percent</i>	<i>Percent</i>
E N Central	4,601	*4,976	4,830	105	97
W N Central	11,046	*11,919	11,367	103	95
N & S Atlantic <sup>1</sup>	8,585	9,362	9,144	107	98
S Central & West <sup>1</sup>	3,954	4,521	4,160	105	92
US	28,186	*30,778	29,501	105	96

\* Revised.

<sup>1</sup> Regions combined to avoid disclosure of individual operations.

**Poult Placements: Entire Month by Region and United States,  
August 2006 with Comparisons <sup>1</sup>**

Geographic Division	Aug 2005	Jul 2006	Aug 2006	Percent of Previous Year	Percent of Previous Month
	<i>1,000</i>	<i>1,000</i>	<i>1,000</i>	<i>Percent</i>	<i>Percent</i>
E N Central	3,843	3,712	3,928	102	106
W N Central	9,394	*9,352	9,848	105	105
N & S Atlantic <sup>2</sup>	7,078	8,311	7,861	111	95
S Central & West <sup>2</sup>	3,584	4,256	3,452	96	81
US	23,899	*25,631	25,089	105	98

\* Revised.

<sup>1</sup> Regional placements refer to poult placed from hatcheries located in that region, and not the actual location of the birds after placement.

<sup>2</sup> Regions combined to avoid disclosure of individual operations.

## Reliability of Turkey Hatchery Estimates

**Survey Procedures:** Primary data for the "**Turkey Hatchery**" report are collected from monthly questionnaires sent to turkey hatcheries in 16 States. An attempt is made to collect hatchery information from all known hatcheries in these 16 monthly States. Approximately 30 hatcheries are contacted each month. Hatcheries are mailed a questionnaire and given adequate time to respond by mail. Those that do not respond by mail are called by phone. Diligent effort is made to ensure that all hatcheries are accounted for in the estimate. An allowance is made for all non-reporting hatcheries.

**Estimating Procedures:** Individual hatchery data are summed to State, regional, and U.S. totals. All hatchery data are analyzed for unusual values. Data from each hatchery are compared to their past operating profile. Data for missing hatcheries are estimated based on historical data by State offices. Individual State estimates are reviewed by the Agricultural Statistics Board for reasonableness. Only regional and U.S. level estimates are published due to the limited number of hatcheries involved. Regional placement data in the report refer to placement of poults from hatcheries located in that region, not the actual location of the birds after placement. Poults exported out of the U.S. and poults imported from outside of the U.S. are not included in the report.

Accumulated poult placements beginning on September 1 and ending on August 31 are shown in the monthly "**Turkey Hatchery**" report. This time period corresponds with the placements of poults which will reach maturity and be available for slaughter during the calendar year.

**Revision Policy:** Revisions are generally the result of late or corrected data and are usually less than 1 percent at the U.S. level. Revisions to the previous month are published in the monthly "**Turkey Hatchery**" report, while annual revisions are published in the "**Hatchery Production - Annual Summary**" report at the end of the marketing year.

**Reliability:** Turkey hatchery estimates are based on a census of operating hatcheries and, therefore, have no sampling error. However, they may be subject to errors such as omission, duplication, and mistakes in reporting, recording, and processing the data. These errors are minimized through strict quality controls in the edit and summarization process, and a careful review of all reported data for consistency and reasonableness.

States in the monthly estimating program are Arkansas, California, Indiana, Massachusetts, Michigan, Minnesota, Missouri, North Carolina, Ohio, Oklahoma, Pennsylvania, Rhode Island, Utah, Virginia, West Virginia, and Wisconsin.

### Regional Listing:

North Atlantic: CT, ME, MA, NH, NJ, NY, PA, RI, VT.  
East North Central: IL, IN, MI, OH, WI.  
West North Central: IA, KS, MN, MO, NE, ND, SD.  
South Atlantic: DE, FL, GA, MD, NC, SC, VA, WV.  
South Central: AL, AR, KY, LA, MS, OK, TN, TX.  
West: AZ, CA, CO, ID, MT, NM, NV, OR, UT, WA, WY.

## Information Contacts

Listed below are the commodity specialists in the Livestock Branch of the National Agricultural Statistics Service to contact for additional information.

Dan Kerestes, Chief, Livestock Branch ..... (202) 720-3570

Darin Jantzi, Head, Poultry and Specialty Commodities Section ..... (202) 720-3570

David Colwell - Cold Storage ..... (202) 720-8784

Fleming Gibson - Egg Products, Poultry Slaughter, Catfish Processing,  
Mink, Turkey Hatchery ..... (202) 690-3237

John Lange - Turkeys Raised, Catfish Production, Trout Production,  
Census of Aquaculture ..... (202) 720-0585

Sharyn Lavender - Layers, Eggs, Broiler Hatchery, Chicken Hatchery,  
Honey ..... (202) 720-3244

## ACCESS TO REPORTS!!

---

For your convenience, there are several ways to obtain NASS reports, data products, and services:

### INTERNET ACCESS

All NASS reports are available free of charge on the worldwide Internet. For access, connect to the Internet and go to the NASS Home Page at: [www.nass.usda.gov](http://www.nass.usda.gov).

### E-MAIL SUBSCRIPTION

All NASS reports are available by subscription free of charge direct to your e-mail address. Starting with the NASS Home Page at [www.nass.usda.gov](http://www.nass.usda.gov), under the right navigation, *Receive reports by Email*, click on **National** or **State**. Follow the instructions on the screen.

-----

### PRINTED REPORTS OR DATA PRODUCTS

**CALL OUR TOLL-FREE ORDER DESK: 800-999-6779 (U.S. and Canada)**  
**Other areas, please call 703-605-6220      FAX: 703-605-6900**  
**(Visa, MasterCard, check, or money order acceptable for payment.)**

-----

### ASSISTANCE

For **assistance** with general agricultural statistics or further information about NASS or its products or services, contact the **Agricultural Statistics Hotline** at **800-727-9540**, 7:30 a.m. to 4:00 p.m. ET, or e-mail: [nass@nass.usda.gov](mailto:nass@nass.usda.gov).

The U.S. Department of Agriculture (USDA) prohibits discrimination in all its programs and activities on the basis of race, color, national origin, age, disability, and where applicable, sex, marital status, familial status, parental status, religion, sexual orientation, genetic information, political beliefs, reprisal, or because all or part of an individual's income is derived from any public assistance program. (Not all prohibited bases apply to all programs.) Persons with disabilities who require alternative means for communication of program information (Braille, large print, audiotape, etc.) should contact USDA's TARGET Center at (202) 720-2600 (voice and TDD).

To file a complaint of discrimination, write to USDA, Director, Office of Civil Rights, 1400 Independence Avenue, S.W., Washington, D.C. 20250-9410, or call (800) 795-3272 (voice) or (202) 720-6382 (TDD). USDA is an equal opportunity provider and employer.