



NASS

FACT FINDERS FOR AGRICULTURE
UNITED STATES DEPARTMENT OF AGRICULTURE

Washington, D.C.

Turkey Hatchery

Released October 13, 2006, by the National Agricultural Statistics Service (NASS), Agricultural Statistics Board, U.S. Department of Agriculture. For information on *Turkey Hatchery* call Fleming Gibson at (202) 690-3237, office hours 7:30 a.m. to 4:00 p.m. ET.

Eggs in Incubators on October 1 Up 12 Percent From Last Year

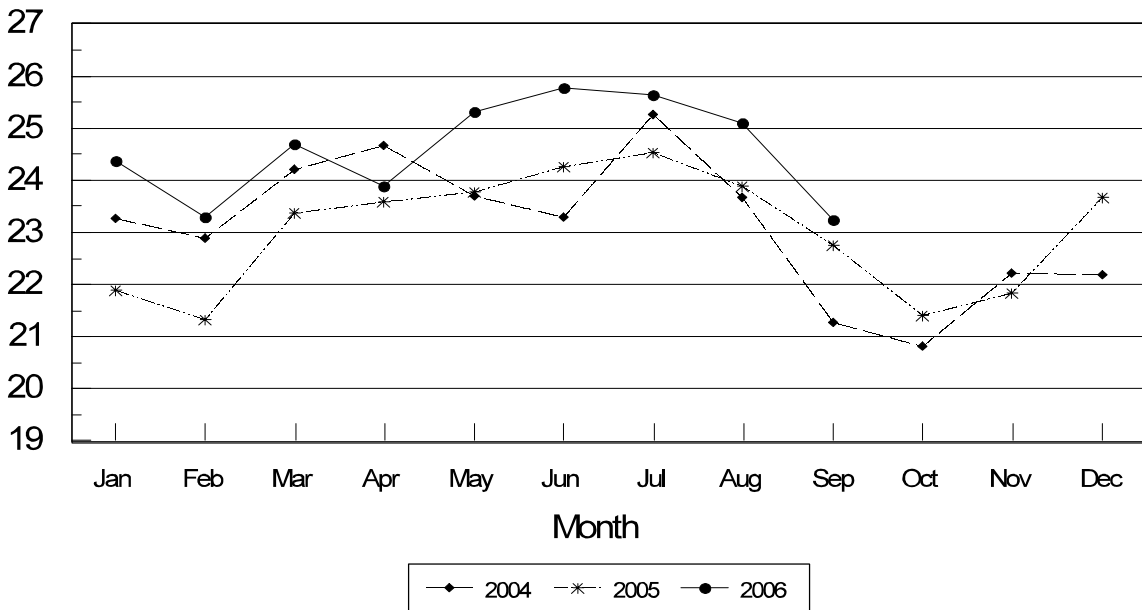
Turkey eggs in incubators on October 1, 2006, in the United States totaled 29.8 million, up 12 percent from October 1, 2005. Eggs in incubators were up 1 percent from the September 1, 2006 total of 29.5 million eggs. Regional changes from the previous year were: East North Central up 8 percent, West North Central up 7 percent, North and South Atlantic up 16 percent, and South Central and West up 28 percent.

Poults Placed During September Up 2 Percent From Last Year

The 23.2 million poults placed during September 2006 in the United States were up 2 percent from the number placed during the same month a year earlier. Placements were 7 percent below August 2006. Regional changes from the previous year were: East North Central up 9 percent, West North Central down 2 percent, North and South Atlantic up 5 percent, and South Central and West up 1 percent.

Turkey Poults Placed United States 2004-2006

Million Poults



**Turkey Hatchery Production: Monthly Poults Placements,
United States, 2005-07 ¹**

Month	Total All Breeds		Percent of Previous Year	Cumulative Total		Percent of Previous Year
	2005-06	2006-07		2005-06	2006-07	
	<i>1,000</i>	<i>1,000</i>	<i>Percent</i>	<i>1,000</i>	<i>1,000</i>	<i>Percent</i>
Sep	22,747	23,249	102	22,747	23,249	102
Oct	21,400			44,147		
Nov	21,850			65,997		
Dec	23,673			89,670		
Jan	24,364			114,034		
Feb	23,296			137,330		
Mar	24,692			162,022		
Apr	23,902			185,924		
May	25,313			211,237		
Jun	25,764			237,001		
Jul	25,631			262,632		
Aug	25,089			287,721		

¹ Excludes exported poults.

**Eggs in Incubators: First of Month by Region
and United States, October 2006 with Comparisons**

Geographic Division	Oct 1 2005	Sep 1 2006	Oct 1 2006	Percent of Previous Year	Percent of Previous Month
	<i>1,000</i>	<i>1,000</i>	<i>1,000</i>	<i>Percent</i>	<i>Percent</i>
E N Central	4,408	4,830	4,762	108	99
W N Central	10,753	11,367	11,501	107	101
N & S Atlantic ¹	8,341	9,144	9,666	116	106
S Central & West ¹	3,036	*4,206	3,871	128	92
US	26,538	*29,547	29,800	112	101

* Revised.

¹ Regions combined to avoid disclosure of individual operations.

**Poults Placements: Entire Month by Region and United States,
September 2006 with Comparisons ¹**

Geographic Division	Sep 2005	Aug 2006	Sep 2006	Percent of Previous Year	Percent of Previous Month
	<i>1,000</i>	<i>1,000</i>	<i>1,000</i>	<i>Percent</i>	<i>Percent</i>
E N Central	3,424	3,928	3,722	109	95
W N Central	9,230	9,848	9,073	98	92
N & S Atlantic ²	6,979	7,861	7,307	105	93
S Central & West ²	3,114	3,452	3,147	101	91
US	22,747	25,089	23,249	102	93

¹ Regional placements refer to poults placed from hatcheries located in that region, and not the actual location of the birds after placement.

² Regions combined to avoid disclosure of individual operations.

Reliability of Turkey Hatchery Estimates

Survey Procedures: Primary data for the "**Turkey Hatchery**" report are collected from monthly questionnaires sent to turkey hatcheries in 16 States. An attempt is made to collect hatchery information from all known hatcheries in these 16 monthly States. Approximately 30 hatcheries are contacted each month. Hatcheries are mailed a questionnaire and given adequate time to respond by mail. Those that do not respond by mail are called by phone. Diligent effort is made to ensure that all hatcheries are accounted for in the estimate. An allowance is made for all non-reporting hatcheries.

Estimating Procedures: Individual hatchery data are summed to State, regional, and U.S. totals. All hatchery data are analyzed for unusual values. Data from each hatchery are compared to their past operating profile. Data for missing hatcheries are estimated based on historical data by State offices. Individual State estimates are reviewed by the Agricultural Statistics Board for reasonableness. Only regional and U.S. level estimates are published due to the limited number of hatcheries involved. Regional placement data in the report refer to placement of poults from hatcheries located in that region, not the actual location of the birds after placement. Poults exported out of the U.S. and poults imported from outside of the U.S. are not included in the report.

Accumulated poult placements beginning on September 1 and ending on August 31 are shown in the monthly "**Turkey Hatchery**" report. This time period corresponds with the placements of poults which will reach maturity and be available for slaughter during the calendar year.

Revision Policy: Revisions are generally the result of late or corrected data and are usually less than 1 percent at the U.S. level. Revisions to the previous month are published in the monthly "**Turkey Hatchery**" report, while annual revisions are published in the "**Hatchery Production - Annual Summary**" report at the end of the marketing year.

Reliability: Turkey hatchery estimates are based on a census of operating hatcheries and, therefore, have no sampling error. However, they may be subject to errors such as omission, duplication, and mistakes in reporting, recording, and processing the data. These errors are minimized through strict quality controls in the edit and summarization process, and a careful review of all reported data for consistency and reasonableness.

States in the monthly estimating program are Arkansas, California, Indiana, Massachusetts, Michigan, Minnesota, Missouri, North Carolina, Ohio, Oklahoma, Pennsylvania, Rhode Island, Utah, Virginia, West Virginia, and Wisconsin.

Regional Listing:

North Atlantic: CT, ME, MA, NH, NJ, NY, PA, RI, VT.

East North Central: IL, IN, MI, OH, WI.

West North Central: IA, KS, MN, MO, NE, ND, SD.

South Atlantic: DE, FL, GA, MD, NC, SC, VA, WV.

South Central: AL, AR, KY, LA, MS, OK, TN, TX.

West: AZ, CA, CO, ID, MT, NM, NV, OR, UT, WA, WY.

Information Contacts

Listed below are the commodity specialists in the Livestock Branch of the National Agricultural Statistics Service to contact for additional information.

Dan Kerestes, Chief, Livestock Branch (202) 720-3570

Darin Jantzi, Head, Poultry and Specialty Commodities Section (202) 720-3570

David Colwell - Cold Storage (202) 720-8784

Fleming Gibson - Egg Products, Poultry Slaughter, Catfish Processing,
Mink, Turkey Hatchery (202) 690-3237

Darin Jantzi - Turkeys Raised, Catfish Production, Trout Production,
Census of Aquaculture (202) 720-3570

Sharyn Lavender - Layers, Eggs, Broiler Hatchery, Chicken Hatchery,
Honey (202) 720-3244

ACCESS TO REPORTS!!

For your convenience, there are several ways to obtain NASS reports, data products, and services:

INTERNET ACCESS

All NASS reports are available free of charge on the worldwide Internet. For access, connect to the Internet and go to the NASS Home Page at: **www.nass.usda.gov**.

E-MAIL SUBSCRIPTION

All NASS reports are available by subscription free of charge direct to your e-mail address. Starting with the NASS Home Page at **www.nass.usda.gov**, under the right navigation, *Receive reports by Email*, click on **National** or **State**. Follow the instructions on the screen.

PRINTED REPORTS OR DATA PRODUCTS

CALL OUR TOLL-FREE ORDER DESK: 800-999-6779 (U.S. and Canada)
Other areas, please call 703-605-6220 FAX: 703-605-6900
(Visa, MasterCard, check, or money order acceptable for payment.)

ASSISTANCE

For **assistance** with general agricultural statistics or further information about NASS or its products or services, contact the **Agricultural Statistics Hotline** at **800-727-9540**, 7:30 a.m. to 4:00 p.m. ET, or e-mail: **nass@nass.usda.gov**.

The U.S. Department of Agriculture (USDA) prohibits discrimination in all its programs and activities on the basis of race, color, national origin, age, disability, and where applicable, sex, marital status, familial status, parental status, religion, sexual orientation, genetic information, political beliefs, reprisal, or because all or part of an individual's income is derived from any public assistance program. (Not all prohibited bases apply to all programs.) Persons with disabilities who require alternative means for communication of program information (Braille, large print, audiotope, etc.) should contact USDA's TARGET Center at (202) 720-2600 (voice and TDD).

To file a complaint of discrimination, write to USDA, Director, Office of Civil Rights, 1400 Independence Avenue, S.W., Washington, D.C. 20250-9410, or call (800) 795-3272 (voice) or (202) 720-6382 (TDD). USDA is an equal opportunity provider and employer.