



# NASS

FACT FINDERS FOR AGRICULTURE  
UNITED STATES DEPARTMENT OF AGRICULTURE

Washington, D.C.

# Turkey Hatchery

Released January 12, 2007, by the National Agricultural Statistics Service (NASS), Agricultural Statistics Board, U.S. Department of Agriculture. For information on *Turkey Hatchery* call Fleming Gibson at (202) 690-3237, office hours 7:30 a.m. to 4:00 p.m. ET.

## Eggs in Incubators on January 1 Up 5 Percent from Last Year

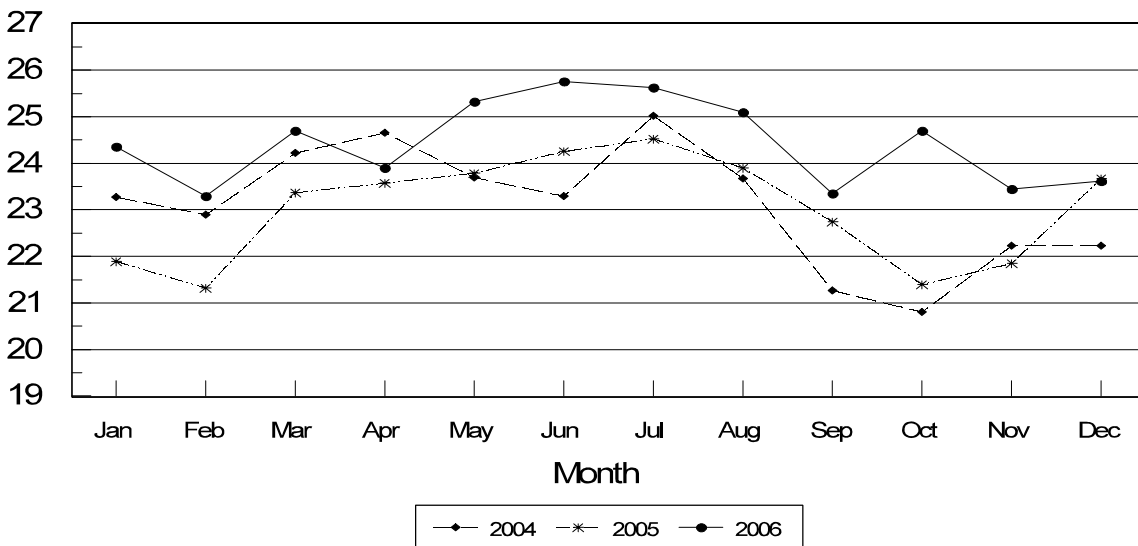
Turkey eggs in incubators on January 1, 2007, in the United States totaled 31.2 million, up 5 percent from January 1, 2006. Eggs in incubators were up 7 percent from the December 1, 2006 total of 29.2 million eggs. Regional changes from the previous year were: East North Central up 9 percent, West North Central up 6 percent, North and South Atlantic up 5 percent, and South Central and West down 5 percent.

## Poults Placed During December Down Slightly from Last Year

The 23.6 million poults placed during December 2006 in the United States were down slightly from the number placed during the same month a year earlier. Placements were up 1 percent from the November 2006 total of 23.4 million. Regional changes from the previous year were: East North Central down 2 percent, West North Central down 7 percent, North and South Atlantic up 4 percent, and South Central and West up 13 percent.

## Turkey Poults Placed United States 2004-2006

Million Poults



**Turkey Poults Placed: By Month,  
United States, 2005-2007 <sup>1</sup>**

Month	Total All Breeds		Percent of Previous Year	Cumulative Total		Percent of Previous Year
	2005-06	2006-07		2005-06	2006-07	
	<i>1,000</i>	<i>1,000</i>	<i>Percent</i>	<i>1,000</i>	<i>1,000</i>	<i>Percent</i>
Sep	22,747	23,355	103	22,747	23,355	103
Oct	21,400	24,706	115	44,147	48,061	109
Nov <sup>2</sup>	21,850	23,443	107	65,997	71,504	108
Dec	23,673	23,615	100	89,670	95,119	106
Jan	24,364			114,034		
Feb	23,296			137,330		
Mar	24,692			162,022		
Apr	23,902			185,924		
May	25,313			211,237		
Jun	25,764			237,001		
Jul	25,631			262,632		
Aug	25,089			287,721		

<sup>1</sup> Excludes exported poults.

<sup>2</sup> Revised 2006 data only.

**Turkey Eggs in Incubators: First of Month by Region  
and United States, January 2007 with Comparisons**

Region	Jan 1 2006	Dec 1 2006	Jan 1 2007	Percent of Previous Year	Percent of Previous Month
	<i>1,000</i>	<i>1,000</i>	<i>1,000</i>	<i>Percent</i>	<i>Percent</i>
E N Central	4,616	*5,019	5,015	109	100
W N Central	11,360	*10,651	12,092	106	114
N & S Atlantic <sup>1</sup>	9,407	9,379	9,908	105	106
S Central & West <sup>1</sup>	4,390	*4,193	4,162	95	99
US	29,773	*29,242	31,177	105	107

\* Revised.

<sup>1</sup> Regions combined to avoid disclosure of individual operations.

**Turkey Poults Placed: Entire Month by Region  
and United States, December 2006 with Comparisons <sup>1</sup>**

Region	Dec 2005	Nov 2006	Dec 2006	Percent of Previous Year	Percent of Previous Month
	<i>1,000</i>	<i>1,000</i>	<i>1,000</i>	<i>Percent</i>	<i>Percent</i>
E N Central	3,683	3,857	3,597	98	93
W N Central	9,229	9,464	8,563	93	90
N & S Atlantic <sup>2</sup>	7,649	7,374	7,933	104	108
S Central & West <sup>2</sup>	3,112	*2,748	3,522	113	128
US	23,673	*23,443	23,615	100	101

\* Revised.

<sup>1</sup> Regional placements refer to poults placed from hatcheries located in that region, and not the actual location of the birds after placement. Excludes exported poults.

<sup>2</sup> Regions combined to avoid disclosure of individual operations.

## Reliability of Turkey Hatchery Estimates

**Survey Procedures:** Primary data for the "**Turkey Hatchery**" report are collected from monthly questionnaires sent to turkey hatcheries in 16 States. An attempt is made to collect hatchery information from all known hatcheries in these 16 monthly States. Approximately 30 hatcheries are contacted each month. Hatcheries are mailed a questionnaire and given adequate time to respond by mail. Those that do not respond by mail are contacted by phone. Diligent effort is made to ensure that all hatcheries are accounted for in the estimate. An allowance is made for all non-reporting hatcheries.

**Estimating Procedures:** Individual hatchery data are summed to State, regional, and U.S. totals. All hatchery data are analyzed for unusual values. Data from each hatchery are compared to their past operating profile. Data for missing hatcheries are estimated based on historical data by State offices. Individual State estimates are reviewed by the Agricultural Statistics Board for reasonableness. Only regional and U.S. level estimates are published due to the limited number of hatcheries involved. Regional placement data in the report refer to placement of poults from hatcheries located in that region, not the actual location of the birds after placement. Poults exported out of the U.S. and poults imported from outside of the U.S. are not included in the report.

Accumulated poult placements beginning on September 1 and ending on August 31 are shown in the monthly "**Turkey Hatchery**" report. This time period corresponds with the placements of poults which will reach maturity and be available for slaughter during the calendar year.

**Revision Policy:** Revisions are generally the result of late or corrected data and are usually less than 1 percent at the U.S. level. Revisions to the previous month are published in the monthly "**Turkey Hatchery**" report, while annual revisions are published in the "**Hatchery Production - Annual Summary**" report in April.

**Reliability:** Turkey hatchery estimates are based on a census of operating hatcheries and, therefore, have no sampling error. However, they may be subject to errors such as omission, duplication, and mistakes in reporting, recording, and processing the data. These errors are minimized through strict quality controls in the edit and summarization process and a careful review of all reported data for consistency and reasonableness.

States in the monthly estimating program are Arkansas, California, Indiana, Massachusetts, Michigan, Minnesota, Missouri, North Carolina, Ohio, Oklahoma, Pennsylvania, Rhode Island, Utah, Virginia, West Virginia, and Wisconsin.

### Regional Listing:

North Atlantic: CT, ME, MA, NH, NJ, NY, PA, RI, VT.

East North Central: IL, IN, MI, OH, WI.

West North Central: IA, KS, MN, MO, NE, ND, SD.

South Atlantic: DE, FL, GA, MD, NC, SC, VA, WV.

South Central: AL, AR, KY, LA, MS, OK, TN, TX.

West: AZ, CA, CO, ID, MT, NM, NV, OR, UT, WA, WY.

## Information Contacts

Listed below are the commodity specialists in the Livestock Branch of the National Agricultural Statistics Service to contact for additional information.

Dan Kerestes, Chief, Livestock Branch ..... (202) 720-3570

Darin Jantzi, Head, Poultry and Specialty Commodities Section ..... (202) 720-3570

Mark Aitken - Layers, Eggs ..... (202) 690-8632

David Colwell - Cold Storage ..... (202) 720-8784

Fleming Gibson - Egg Products, Poultry Slaughter, Catfish Processing, Mink,  
Turkey Hatchery, Turkeys Raised ..... (202) 690-3237

Darin Jantzi - Catfish Production, Trout Production, Census of Aquaculture ..... (202) 720-3570

Sharyn Lavender - Broiler Hatchery, Chicken Hatchery, Honey ..... (202) 720-3244

## ACCESS TO REPORTS!!

---

For your convenience, there are several ways to obtain NASS reports, data products, and services:

### INTERNET ACCESS

All NASS reports are available free of charge on the worldwide Internet. For access, connect to the Internet and go to the NASS Home Page at: **www.nass.usda.gov**.

### E-MAIL SUBSCRIPTION

All NASS reports are available by subscription free of charge direct to your e-mail address. Starting with the NASS Home Page at **www.nass.usda.gov**, under the right navigation, *Receive reports by Email*, click on **National** or **State**. Follow the instructions on the screen.

-----

### PRINTED REPORTS OR DATA PRODUCTS

**CALL OUR TOLL-FREE ORDER DESK: 800-999-6779 (U.S. and Canada)**  
**Other areas, please call 703-605-6220      FAX: 703-605-6900**  
**(Visa, MasterCard, check, or money order acceptable for payment.)**

-----

### ASSISTANCE

For **assistance** with general agricultural statistics or further information about NASS or its products or services, contact the **Agricultural Statistics Hotline** at **800-727-9540**, 7:30 a.m. to 4:00 p.m. ET, or e-mail: **nass@nass.usda.gov**.

The U.S. Department of Agriculture (USDA) prohibits discrimination in all its programs and activities on the basis of race, color, national origin, age, disability, and where applicable, sex, marital status, familial status, parental status, religion, sexual orientation, genetic information, political beliefs, reprisal, or because all or a part of an individual's income is derived from any public assistance program. (Not all prohibited bases apply to all programs.) Persons with disabilities who require alternative means for communication of program information (Braille, large print, audiotope, etc.) should contact USDA's TARGET Center at (202) 720-2600 (voice and TDD).

To file a complaint of discrimination, write to USDA, Director, Office of Civil Rights, 1400 Independence Avenue, S.W., Washington, D.C. 20250-9410, or call (800) 795-3272 (voice) or (202) 720-6382 (TDD). USDA is an equal opportunity provider and employer.