



NASS

FACT FINDERS FOR AGRICULTURE
UNITED STATES DEPARTMENT OF AGRICULTURE

Washington, D.C.

Turkey Hatchery

Released February 14, 2007, by the National Agricultural Statistics Service (NASS), Agricultural Statistics Board, U.S. Department of Agriculture. For information on *Turkey Hatchery* call Fleming Gibson at (202) 690-3237, office hours 7:30 a.m. to 4:00 p.m. ET.

Eggs in Incubators on February 1 Up 3 Percent from Last Year

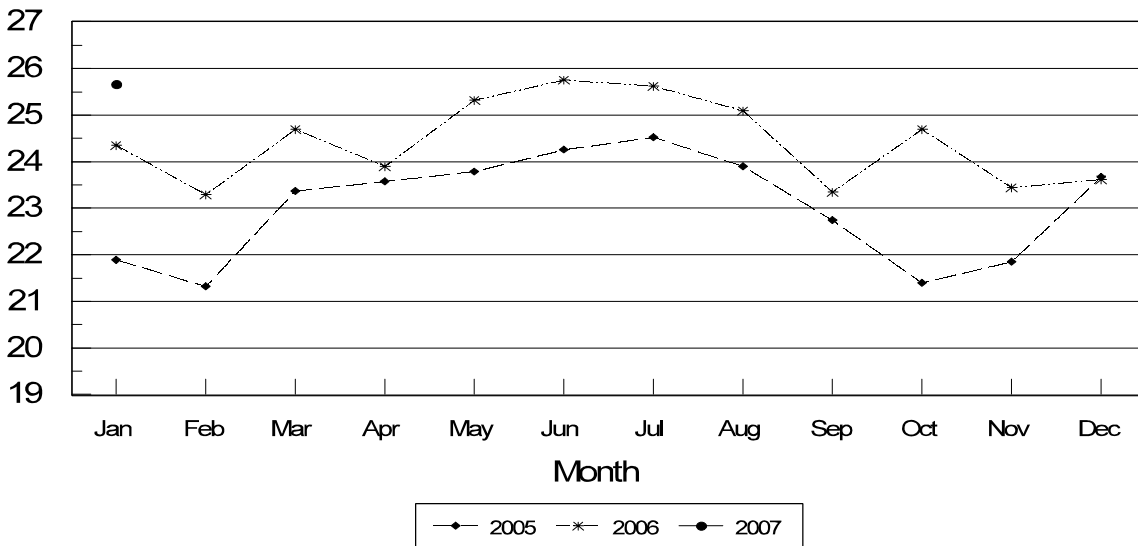
Turkey eggs in incubators on February 1, 2007, in the United States totaled 31.1 million, up 3 percent from February 1, 2006. Eggs in incubators were up slightly from the January 1, 2007 total of 31.1 million eggs. Regional changes from the previous year were: East North Central up 1 percent, West North Central up 5 percent, North and South Atlantic up 1 percent, and South Central and West up 6 percent.

Poults Placed During January Up 5 Percent from Last Year

The 25.7 million poults placed during January 2007 in the United States were up 5 percent from the number placed during the same month a year earlier. Placements were up 9 percent from the December 2006 total of 23.6 million. Regional changes from the previous year were: East North Central up 12 percent, West North Central up 7 percent, North and South Atlantic up 6 percent, and South Central and West down 8 percent.

Turkey Poults Placed United States 2005-2007

Million Poults



**Turkey Poults Placed: By Month,
United States, 2005-2007 ¹**

Month	Total All Breeds		Percent of Previous Year	Cumulative Total		Percent of Previous Year
	2005-06	2006-07		2005-06	2006-07	
	<i>1,000</i>	<i>1,000</i>	<i>Percent</i>	<i>1,000</i>	<i>1,000</i>	<i>Percent</i>
Sep	22,747	23,355	103	22,747	23,355	103
Oct	21,400	24,706	115	44,147	48,061	109
Nov	21,850	23,443	107	65,997	71,504	108
Dec	23,673	23,615	100	89,670	95,119	106
Jan	24,364	25,655	105	114,034	120,774	106
Feb	23,296			137,330		
Mar	24,692			162,022		
Apr	23,902			185,924		
May	25,313			211,237		
Jun	25,764			237,001		
Jul	25,631			262,632		
Aug	25,089			287,721		

¹ Excludes exported poults.

**Turkey Eggs in Incubators: First of Month by Region
and United States, February 2007 with Comparisons**

Region	Feb 1 2006	Jan 1 2007	Feb 1 2007	Percent of Previous Year	Percent of Previous Month
	<i>1,000</i>	<i>1,000</i>	<i>1,000</i>	<i>Percent</i>	<i>Percent</i>
E N Central	4,819	5,015	4,890	101	98
W N Central	11,226	*12,029	11,827	105	98
N & S Atlantic ¹	9,971	9,908	10,119	101	102
S Central & West ¹	4,061	4,162	4,289	106	103
US	30,077	*31,114	31,125	103	100

* Revised.

¹ Regions combined to avoid disclosure of individual operations.

**Turkey Poults Placed: Entire Month by Region
and United States, January 2007 with Comparisons ¹**

Region	Jan 2006	Dec 2006	Jan 2007	Percent of Previous Year	Percent of Previous Month
	<i>1,000</i>	<i>1,000</i>	<i>1,000</i>	<i>Percent</i>	<i>Percent</i>
E N Central	3,510	3,597	3,918	112	109
W N Central	9,352	8,563	10,043	107	117
N & S Atlantic ²	7,945	7,933	8,419	106	106
S Central & West ²	3,557	3,522	3,275	92	93
US	24,364	23,615	25,655	105	109

¹ Regional placements refer to poults placed from hatcheries located in that region, and not the actual location of the birds after placement. Excludes exported poults.

² Regions combined to avoid disclosure of individual operations.

Reliability of Turkey Hatchery Estimates

Survey Procedures: Data for the "**Turkey Hatchery**" report are collected from all known turkey hatcheries. Individual NASS field offices maintain a list of all known turkey hatcheries and use known sources of hatcheries to update their lists. Approximately 30 hatcheries are contacted each month. All known turkey hatcheries are mailed a questionnaire as close to the first of the month as possible and given adequate time to respond via mail, fax, or EDR. Those that do not respond are contacted by phone. Care is exercised to ensure that all hatcheries are accounted for in the estimate.

Estimating Procedures: Sound statistical methodology is employed to derive the estimates from reported data. All data are analyzed for unusual values. Data from each operation are compared to their own past operating profile and to trends from similar operations. Data for missing operations were estimated based on similar operations or historical data. NASS field offices prepare these estimates by using a combination of survey indications and historic trends. Individual State estimates are reviewed by the Agricultural Statistics Board for reasonableness. Individual hatchery data are summed to State, regional, and U.S. totals. Only regional and U.S. level estimates are published due to the limited number of hatcheries involved. Regional placement data in the report refer to placement of poults from hatcheries located in that region, not the actual location of the birds after placement. Poults exported out of the U.S. and poults imported from outside of the U.S. are not included in the report.

Accumulated poult placements beginning on September 1 and ending on August 31 are shown in the monthly "**Turkey Hatchery**" report. This time period corresponds with the placements of poults which will reach maturity and be available for slaughter during the calendar year.

Revision Policy: Revisions are generally the result of late or corrected data. Revisions to the previous month are published in the monthly "**Turkey Hatchery**" report, while annual revisions are published in the "**Hatchery Production - Annual Summary**" report in April.

Reliability: Turkey hatchery estimates are based on a census of all known operating hatcheries and therefore, have no sampling error. However, estimates are subject to errors such as omission, duplication, and mistakes in reporting, recording, and processing the data. While these errors cannot be measured directly, they are minimized through strict quality controls in the data collection process and a careful review of all reported data for consistency and reasonableness.

States reporting turkey hatcheries are Arkansas, California, Indiana, Massachusetts, Michigan, Minnesota, Missouri, North Carolina, Ohio, Oklahoma, Pennsylvania, Rhode Island, Utah, Virginia, West Virginia, and Wisconsin.

Regional Listing:

North Atlantic: CT, ME, MA, NH, NJ, NY, PA, RI, VT.
East North Central: IL, IN, MI, OH, WI.
West North Central: IA, KS, MN, MO, NE, ND, SD.
South Atlantic: DE, FL, GA, MD, NC, SC, VA, WV.
South Central: AL, AR, KY, LA, MS, OK, TN, TX.
West: AZ, CA, CO, ID, MT, NM, NV, OR, UT, WA, WY.

Information Contacts

Listed below are the commodity specialists in the Livestock Branch of the National Agricultural Statistics Service to contact for additional information.

Dan Kerestes, Chief, Livestock Branch (202) 720-3570

Darin Jantzi, Head, Poultry and Specialty Commodities Section (202) 720-3570

Mark Aitken - Layers, Eggs (202) 690-8632

David Colwell - Cold Storage (202) 720-8784

Fleming Gibson - Egg Products, Poultry Slaughter, Catfish Processing, Mink,
Turkey Hatchery, Turkeys Raised (202) 690-3237

Sharyn Lavender - Broiler Hatchery, Chicken Hatchery, Honey (202) 720-3244

Toby Paterson - Catfish Production, Trout Production, Census of Aquaculture (202) 720-0585

ACCESS TO REPORTS!!

For your convenience, there are several ways to obtain NASS reports, data products, and services:

INTERNET ACCESS

All NASS reports are available free of charge on the worldwide Internet. For access, connect to the Internet and go to the NASS Home Page at: www.nass.usda.gov.

E-MAIL SUBSCRIPTION

All NASS reports are available by subscription free of charge direct to your e-mail address. Starting with the NASS Home Page at www.nass.usda.gov, under the right navigation, *Receive reports by Email*, click on **National** or **State**. Follow the instructions on the screen.

PRINTED REPORTS OR DATA PRODUCTS

CALL OUR TOLL-FREE ORDER DESK: 800-999-6779 (U.S. and Canada)
Other areas, please call 703-605-6220 FAX: 703-605-6900
(Visa, MasterCard, check, or money order acceptable for payment.)

ASSISTANCE

For **assistance** with general agricultural statistics or further information about NASS or its products or services, contact the **Agricultural Statistics Hotline** at **800-727-9540**, 7:30 a.m. to 4:00 p.m. ET, or e-mail: nass@nass.usda.gov.

The U.S. Department of Agriculture (USDA) prohibits discrimination in all its programs and activities on the basis of race, color, national origin, age, disability, and where applicable, sex, marital status, familial status, parental status, religion, sexual orientation, genetic information, political beliefs, reprisal, or because all or a part of an individual's income is derived from any public assistance program. (Not all prohibited bases apply to all programs.) Persons with disabilities who require alternative means for communication of program information (Braille, large print, audiotape, etc.) should contact USDA's TARGET Center at (202) 720-2600 (voice and TDD).

To file a complaint of discrimination, write to USDA, Director, Office of Civil Rights, 1400 Independence Avenue, S.W., Washington, D.C. 20250-9410, or call (800) 795-3272 (voice) or (202) 720-6382 (TDD). USDA is an equal opportunity provider and employer.