



NASS

FACT FINDERS FOR AGRICULTURE
UNITED STATES DEPARTMENT OF AGRICULTURE

Washington, D.C.

Turkey Hatchery

Released March 14, 2007, by the National Agricultural Statistics Service (NASS), Agricultural Statistics Board, U.S. Department of Agriculture. For information on *Turkey Hatchery* call Toby Paterson at (202) 720-0585, office hours 7:30 a.m. to 4:00 p.m. ET.

Eggs in Incubators on March 1 Up 4 Percent from Last Year

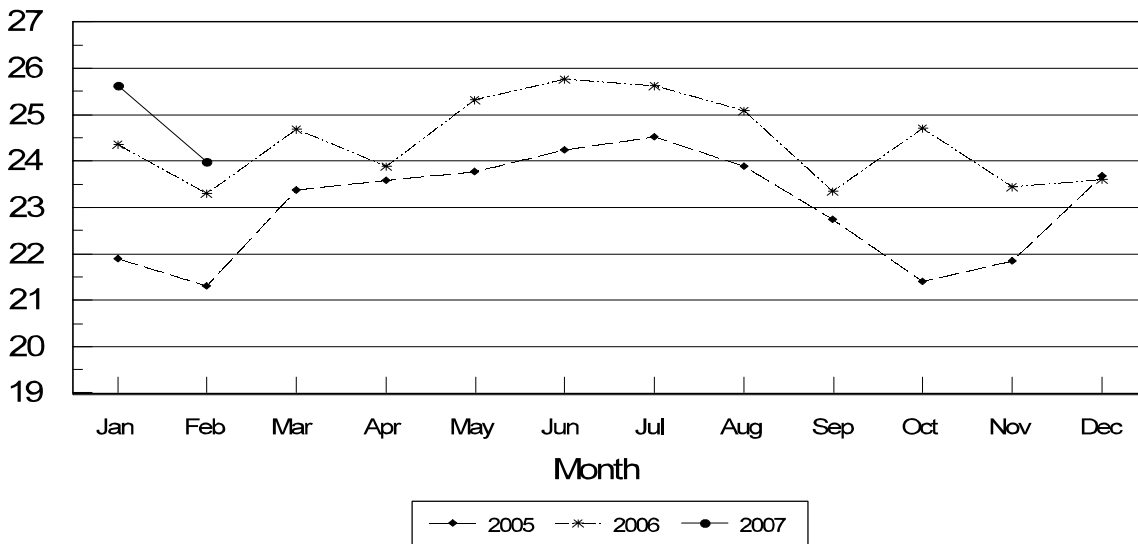
Turkey eggs in incubators on March 1, 2007, in the United States totaled 31.2 million, up 4 percent from March 1, 2006. Eggs in incubators were down slightly from the February 1, 2007 total of 31.3 million eggs. Regional changes from the previous year were: East North Central up 5 percent, West North Central up 6 percent, North and South Atlantic up 3 percent, and South Central and West up 3 percent.

Poults Placed During February Up 3 Percent from Last Year

The 24.0 million poults placed during February 2007 in the United States were up 3 percent from the number placed during the same month a year earlier. Placements were down 6 percent from the January 2007 total of 25.6 million. Regional changes from the previous year were: East North Central up 4 percent, West North Central up 6 percent, North and South Atlantic down 3 percent, and South Central and West up 7 percent.

Turkey Poults Placed United States 2005-2007

Million Poults



**Turkey Poults Placed: By Month,
United States, 2005-2007 ¹**

Month	Total All Breeds		Percent of Previous Year	Cumulative Total		Percent of Previous Year
	2005-06	2006-07		2005-06	2006-07	
	<i>1,000</i>	<i>1,000</i>	<i>Percent</i>	<i>1,000</i>	<i>1,000</i>	<i>Percent</i>
Sep	22,747	23,355	103	22,747	23,355	103
Oct	21,400	24,706	115	44,147	48,061	109
Nov	21,850	23,443	107	65,997	71,504	108
Dec	23,673	23,615	100	89,670	95,119	106
Jan ²	24,364	25,625	105	114,034	120,744	106
Feb	23,296	23,987	103	137,330	144,731	105
Mar	24,692			162,022		
Apr	23,902			185,924		
May	25,313			211,237		
Jun	25,764			237,001		
Jul	25,631			262,632		
Aug	25,089			287,721		

¹ Excludes exported poults.

² Revised 2007 data only.

**Turkey Eggs in Incubators: First of Month by Region
and United States, March 2007**

Region	Mar 1 2006	Feb 1 2007 ¹	Mar 1 2007	Percent of Previous Year	Percent of Previous Month
	<i>1,000</i>	<i>1,000</i>	<i>1,000</i>	<i>Percent</i>	<i>Percent</i>
E N Central	4,663	4,890	4,908	105	100
W N Central	11,443	11,903	12,098	106	102
N & S Atlantic ²	9,535	10,192	9,790	103	96
S Central & West ²	4,273	4,288	4,422	103	103
US	29,914	31,273	31,218	104	100

¹ Revised.

² Regions combined to avoid disclosure of individual operations.

**Turkey Poults Placed: Entire Month by Region
and United States, February 2007 ¹**

Region	Feb 2006	Jan 2007 ²	Feb 2007	Percent of Previous Year	Percent of Previous Month
	<i>1,000</i>	<i>1,000</i>	<i>1,000</i>	<i>Percent</i>	<i>Percent</i>
E N Central	3,501	3,918	3,658	104	93
W N Central	9,050	10,013	9,567	106	96
N & S Atlantic ³	7,693	8,419	7,483	97	89
S Central & West ³	3,052	3,275	3,279	107	100
US	23,296	25,625	23,987	103	94

¹ Regional placements refer to poults placed from hatcheries located in that region, and not the actual location of the birds after placement. Excludes exported poults.

² Revised.

³ Regions combined to avoid disclosure of individual operations.

Reliability of Turkey Hatchery Estimates

Survey Procedures: Data for the "**Turkey Hatchery**" report are collected from all known turkey hatcheries. Individual NASS field offices maintain a list of all known turkey hatcheries and use known sources of hatcheries to update their lists. Approximately 35 hatcheries are contacted each month. All known turkey hatcheries are mailed a questionnaire as close to the first of the month as possible and given adequate time to respond via mail, fax, or EDR. Those that do not respond are contacted by phone. Care is exercised to ensure that all hatcheries are accounted for in the estimate.

Estimating Procedures: Sound statistical methodology is employed to derive the estimates from reported data. All data are analyzed for unusual values. Data from each operation are compared to their own past operating profile and to trends from similar operations. Data for missing operations were estimated based on similar operations or historical data. NASS field offices prepare these estimates by using a combination of survey indications and historic trends. Individual State estimates are reviewed by the Agricultural Statistics Board for reasonableness. Individual hatchery data are summed to State, regional, and U.S. totals. Only regional and U.S. level estimates are published due to the limited number of hatcheries involved. Regional placement data in the report refer to placement of poults from hatcheries located in that region, not the actual location of the birds after placement. Poults exported out of the U.S. and poults imported from outside of the U.S. are not included in the report.

Accumulated poult placements beginning on September 1 and ending on August 31 are shown in the monthly "**Turkey Hatchery**" report. This time period corresponds with the placements of poults which will reach maturity and be available for slaughter during the calendar year.

Revision Policy: Revisions are generally the result of late or corrected data. Revisions to the previous month are published in the monthly "**Turkey Hatchery**" report, while annual revisions are published in the "**Hatchery Production - Annual Summary**" report in April.

Reliability: Turkey hatchery estimates are based on a census of all known operating hatcheries and therefore, have no sampling error. However, estimates are subject to errors such as omission, duplication, and mistakes in reporting, recording, and processing the data. While these errors cannot be measured directly, they are minimized through strict quality controls in the data collection process and a careful review of all reported data for consistency and reasonableness.

States reporting turkey hatcheries are: Arkansas, California, Florida, Indiana, Massachusetts, Michigan, Minnesota, Missouri, North Carolina, Ohio, Oklahoma, Pennsylvania, Rhode Island, Texas, Utah, Virginia, West Virginia, and Wisconsin.

Regional Listing:

North Atlantic: CT, ME, MA, NH, NJ, NY, PA, RI, VT.

East North Central: IL, IN, MI, OH, WI.

West North Central: IA, KS, MN, MO, NE, ND, SD.

South Atlantic: DE, FL, GA, MD, NC, SC, VA, WV.

South Central: AL, AR, KY, LA, MS, OK, TN, TX.

West: AZ, CA, CO, ID, MT, NM, NV, OR, UT, WA, WY.

Information Contacts

Listed below are the commodity specialists in the Livestock Branch of the National Agricultural Statistics Service to contact for additional information.

Dan Kerestes, Chief, Livestock Branch (202) 720-3570

Darin Jantzi, Head, Poultry and Specialty Commodities Section (202) 720-3570

Mark Aitken - Layers, Eggs (202) 690-8632

David Colwell - Cold Storage (202) 720-8784

Fleming Gibson - Egg Products, Poultry Slaughter, Catfish Processing, Mink (202) 690-3237

Sharyn Lavender - Broiler Hatchery, Chicken Hatchery, Honey (202) 720-3244

Toby Paterson - Catfish Production, Trout Production, Census of Aquaculture,
Turkey Hatchery, Turkeys Raised (202) 720-0585

ACCESS TO REPORTS!!

For your convenience, there are several ways to obtain NASS reports, data products, and services:

INTERNET ACCESS

All NASS reports are available free of charge on the worldwide Internet. For access, connect to the Internet and go to the NASS Home Page at: **www.nass.usda.gov**.

E-MAIL SUBSCRIPTION

All NASS reports are available by subscription free of charge direct to your e-mail address. Starting with the NASS Home Page at **www.nass.usda.gov**, under the right navigation, *Receive reports by Email*, click on **National** or **State**. Follow the instructions on the screen.

PRINTED REPORTS OR DATA PRODUCTS

CALL OUR TOLL-FREE ORDER DESK: 800-999-6779 (U.S. and Canada)
Other areas, please call 703-605-6220 FAX: 703-605-6900
(Visa, MasterCard, check, or money order acceptable for payment.)

ASSISTANCE

For **assistance** with general agricultural statistics or further information about NASS or its products or services, contact the **Agricultural Statistics Hotline** at **800-727-9540**, 7:30 a.m. to 4:00 p.m. ET, or e-mail: **nass@nass.usda.gov**.

The U.S. Department of Agriculture (USDA) prohibits discrimination in all its programs and activities on the basis of race, color, national origin, age, disability, and where applicable, sex, marital status, familial status, parental status, religion, sexual orientation, genetic information, political beliefs, reprisal, or because all or a part of an individual's income is derived from any public assistance program. (Not all prohibited bases apply to all programs.) Persons with disabilities who require alternative means for communication of program information (Braille, large print, audiotope, etc.) should contact USDA's TARGET Center at (202) 720-2600 (voice and TDD).

To file a complaint of discrimination, write to USDA, Director, Office of Civil Rights, 1400 Independence Avenue, S.W., Washington, D.C. 20250-9410, or call (800) 795-3272 (voice) or (202) 720-6382 (TDD). USDA is an equal opportunity provider and employer.