



# NASS

FACT FINDERS FOR AGRICULTURE  
UNITED STATES DEPARTMENT OF AGRICULTURE

Washington, D.C.

# Turkey Hatchery

Released September 13, 2007, by the National Agricultural Statistics Service (NASS), Agricultural Statistics Board, U.S. Department of Agriculture. For information on *Turkey Hatchery* call Toby Paterson at (202) 720-0585, office hours 7:30 a.m. to 4:00 p.m. ET.

## Eggs in Incubators on September 1 Up 4 Percent from Last Year

Turkey eggs in incubators on September 1, 2007, in the United States totaled 30.7 million, up 4 percent from September 1, 2006. Eggs in incubators were down 8 percent from the August 1, 2007 total of 33.5 million eggs. Regional changes from the previous year were: East North Central down 4 percent, West North Central up 4 percent, North and South Atlantic up 14 percent, and South Central and West down 10 percent.

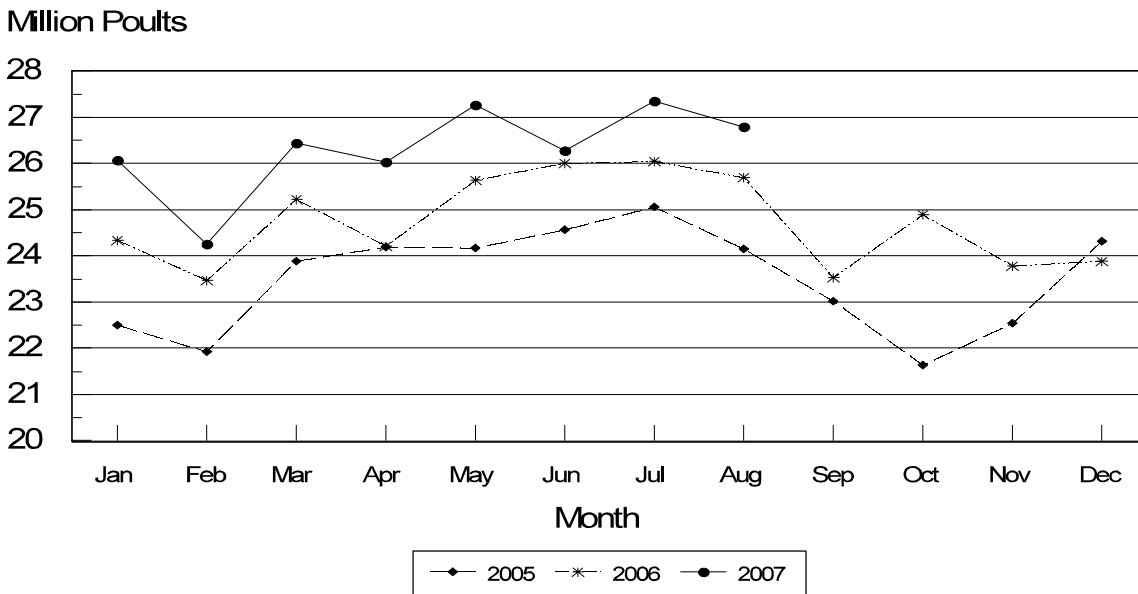
## Poults Hatched During August Up 4 Percent from Last Year

Turkey poults hatched during August 2007, in the United States totaled 26.9 million, up 4 percent from August 2006. Poults hatched were down 1 percent from July 2007 total of 27.3 million poults. Regional changes from the previous year were: East North Central down 3 percent, West North Central up 2 percent, North and South Atlantic up 8 percent, and South Central and West up 9 percent.

## Net Poults Placed During August Up 4 Percent from Last Year

The 26.8 million net poults placed during August 2007 in the United States were up 4 percent from the number placed during the same month a year earlier. Net placements were down 2 percent from the July 2007 total of 27.3 million.

## Turkey Net Poult Placements United States 2005-2007



**Eggs in Incubators: First of Month by Region  
and United States, September 2007**

Region	Sep 1 2006	Aug 1 2007	Sep 1 2007	Percent of Previous Year	Percent of Previous Month
	<i>1,000</i>	<i>1,000</i>	<i>1,000</i>	<i>Percent</i>	<i>Percent</i>
E N Central	4,830	5,036	4,619	96	92
W N Central	11,367	12,808	11,843	104	92
N & S Atlantic <sup>1</sup>	9,209	10,876	10,458	114	96
S Central & West <sup>1</sup>	4,206	4,819	3,778	90	78
US	29,612	33,539	30,698	104	92

<sup>1</sup> Regions combined to avoid disclosure of individual operations.

**Eggs Hatched: Entire Month by Region  
and United States, August 2007**

Region	Aug 2006	Jul 2007	Aug 2007	Percent of Previous Year	Percent of Previous Month
	<i>1,000</i>	<i>1,000</i>	<i>1,000</i>	<i>Percent</i>	<i>Percent</i>
E N Central	4,275	4,099	4,168	97	102
W N Central	10,033	10,416	10,274	102	99
N & S Atlantic <sup>1</sup>	7,997	8,844	8,608	108	97
S Central & West <sup>1</sup>	3,542	3,943	3,874	109	98
US	25,847	27,302	26,924	104	99

<sup>1</sup> Regions combined to avoid disclosure of individual operations.

**Net Poultry Placements: By Month,  
United States, 2005-2007 <sup>1</sup>**

Month	Total All Breeds		Percent of Previous Year	Cumulative Total		Percent of Previous Year
	2005-06	2006-07		2005-06	2006-07	
	<i>1,000</i>	<i>1,000</i>	<i>Percent</i>	<i>1,000</i>	<i>1,000</i>	<i>Percent</i>
Sep	23,018	23,534	102	23,018	23,534	102
Oct	21,633	24,891	115	44,651	48,425	108
Nov	22,540	23,792	106	67,191	72,217	107
Dec	24,329	23,879	98	91,520	96,096	105
Jan	24,341	26,068	107	115,861	122,164	105
Feb	23,473	24,249	103	139,334	146,413	105
Mar	25,230	26,433	105	164,564	172,846	105
Apr	24,212	26,040	108	188,776	198,886	105
May	25,639	27,271	106	214,415	226,157	105
Jun	26,002	26,277	101	240,417	252,434	105
Jul <sup>2</sup>	26,058	27,343	105	266,475	279,777	105
Aug	25,693	26,796	104	292,168	306,573	105

<sup>1</sup> Includes imports and excludes exports.

<sup>2</sup> Revised 2007 data only.

**Regional Listing:**

North Atlantic: CT, ME, MA, NH, NJ, NY, PA, RI, VT.

East North Central: IL, IN, MI, OH, WI.

West North Central: IA, KS, MN, MO, NE, ND, SD.

South Atlantic: DE, FL, GA, MD, NC, SC, VA, WV.

South Central: AL, AR, KY, LA, MS, OK, TN, TX.

West: AZ, CA, CO, ID, MT, NM, NV, OR, UT, WA, WY.

## Reliability of Turkey Hatchery Estimates

**Survey Procedures:** Data for turkey hatchery estimates are collected from all known turkey hatcheries. Individual NASS field offices maintain a list of all known turkey hatcheries and use known sources of hatcheries to update their lists. Approximately 40 hatcheries are contacted each month. All known turkey hatcheries are mailed a questionnaire as close to the first of the month as possible and given adequate time to respond via mail, fax, or EDR. Those that do not respond are contacted by phone. Care is exercised to ensure that all hatcheries are accounted for in the estimate.

**Estimating Procedures:** Sound statistical methodology is employed to derive the estimates from reported data. All data are analyzed for unusual values. Data from each operation are compared to their own past operating profile and to trends from similar operations. Data for missing operations were estimated based on similar operations or historical data. NASS field offices prepare these estimates by using a combination of survey indications and historic trends. Individual State estimates are reviewed by the Agricultural Statistics Board for reasonableness. Individual hatchery data are summed to State, regional, and U.S. totals. Only regional and U.S. level estimates are published due to the limited number of hatcheries involved. The Net Poult Placement data includes imported poult from outside the U.S. and excludes poult exported outside the U.S..

Cummulative net poult placements beginning on September 1 and ending on August 31 are shown in the monthly "**Turkey Hatchery**" report. This time period corresponds with the placements of poult which will reach maturity and be available for slaughter during the calendar year.

States reporting turkey hatcheries are: Arkansas, California, Florida, Indiana, Massachusetts, Michigan, Minnesota, Missouri, North Carolina, Ohio, Oklahoma, Pennsylvania, Rhode Island, Texas, Utah, Virginia, West Virginia, and Wisconsin.

**Revision Policy:** Revisions are generally the result of late or corrected data. Revisions to the previous month are published in the monthly "**Turkey Hatchery**" report, while annual revisions are published in the "**Hatchery Production - Annual Summary**" report in April.

**Reliability:** Turkey hatchery estimates are based on a census of all known operating hatcheries and therefore, have no sampling error. However, estimates are subject to errors such as omission, duplication, and mistakes in reporting, recording, and processing the data. While these errors cannot be measured directly, they are minimized through strict quality controls in the data collection process and a careful review of all reported data for consistency and reasonableness.

To assist in evaluating the reliability of the estimates in this report, the "Root Mean Square Error" is shown for selected items in the following table. The "Root Mean Square Error" is a statistical measure based on past performance and is computed using the differences between first and final estimates. The "Root Mean Square Error" for turkey eggs in incubators over the past 10 years is 1.0 percent. This means that chances are 2 out of 3 that the final estimate will not be above or below the current estimate of 30.7 million eggs by more than 1.0 percent. Chances are 9 out of 10 that the difference will not exceed 1.8 percent.

**Reliability of U.S. September 1 Turkey Hatchery Estimates <sup>1</sup>**

Item	Root Mean Square Error	90 Percent Confidence Level		Difference Between First and Latest Estimates			Number of Years	
				Average	Smallest	Largest	First Above Latest	First Below Latest
	<i>Percent</i>	<i>Percent</i>	<i>1,000</i>	<i>1,000</i>	<i>1,000</i>	<i>1,000</i>	<i>Number</i>	<i>Number</i>
Eggs In Incubators	1.0	1.8	537	202	0	757	2	7

<sup>1</sup> Based on data for the past 10 years.

## Information Contacts

Listed below are the commodity specialists in the Livestock Branch of the National Agricultural Statistics Service to contact for additional information.

Dan Kerestes, Chief, Livestock Branch ..... (202) 720-3570

Darin Jantzi, Head, Poultry and Specialty Commodities Section ..... (202) 720-3570

David Colwell - Cold Storage ..... (202) 720-8784

Fleming Gibson - Egg Products, Poultry Slaughter, Catfish Processing, Mink ..... (202) 690-3237

Sharyn Lavender - Broiler Hatchery, Chicken Hatchery, Honey ..... (202) 720-3244

Kim Linonis - Layers, Eggs ..... (202) 690-8632

Toby Paterson - Catfish Production, Trout Production, Census of Aquaculture,  
Turkey Hatchery, Turkeys Raised ..... (202) 720-0585

## ACCESS TO REPORTS!!

---

For your convenience, there are several ways to obtain NASS reports, data products, and services:

### INTERNET ACCESS

All NASS reports are available free of charge on the worldwide Internet. For access, connect to the Internet and go to the NASS Home Page at: [www.nass.usda.gov](http://www.nass.usda.gov).

### E-MAIL SUBSCRIPTION

All NASS reports are available by subscription free of charge direct to your e-mail address. Starting with the NASS Home Page at [www.nass.usda.gov](http://www.nass.usda.gov), under the right navigation, *Receive reports by Email*, click on **National** or **State**. Follow the instructions on the screen.

-----

### PRINTED REPORTS OR DATA PRODUCTS

**CALL OUR TOLL-FREE ORDER DESK: 800-999-6779 (U.S. and Canada)**  
**Other areas, please call 703-605-6220 FAX: 703-605-6900**  
**(Visa, MasterCard, check, or money order acceptable for payment.)**

-----

### ASSISTANCE

For **assistance** with general agricultural statistics or further information about NASS or its products or services, contact the **Agricultural Statistics Hotline** at **800-727-9540**, 7:30 a.m. to 4:00 p.m. ET, or e-mail: [nass@nass.usda.gov](mailto:nass@nass.usda.gov).

The U.S. Department of Agriculture (USDA) prohibits discrimination in all its programs and activities on the basis of race, color, national origin, age, disability, and where applicable, sex, marital status, familial status, parental status, religion, sexual orientation, genetic information, political beliefs, reprisal, or because all or a part of an individual's income is derived from any public assistance program. (Not all prohibited bases apply to all programs.) Persons with disabilities who require alternative means for communication of program information (Braille, large print, audiotope, etc.) should contact USDA's TARGET Center at (202) 720-2600 (voice and TDD).

To file a complaint of discrimination write to USDA, Director, Office of Civil Rights, 1400 Independence Avenue, S.W., Washington, D.C. 20250-9410 or call (800) 795-3272 (voice) or (202) 720-6382 (TDD). USDA is an equal opportunity provider and employer.