

Released January 14, 2008, by the National Agricultural Statistics Service (NASS), Agricultural Statistics Board, U.S. Department of Agriculture. For information on *Turkey Hatchery* call Toby Paterson at (202) 720-0585, office hours 7:30 a.m. to 4:00 p.m. ET.

Eggs in Incubators on January 1 Up 1 Percent from Last Year

Turkey eggs in incubators on January 1, 2008, in the United States totaled 31.5 million, up 1 percent from January 1, 2007. Eggs in incubators were up 4 percent from the December 1, 2007 total of 30.2 million eggs. Regional changes from the previous year were: East North Central down 9 percent, West North Central up 2 percent, North and South Atlantic up 8 percent, and South Central and West down 3 percent.

Poults Hatched During December Up 2 Percent from Last Year

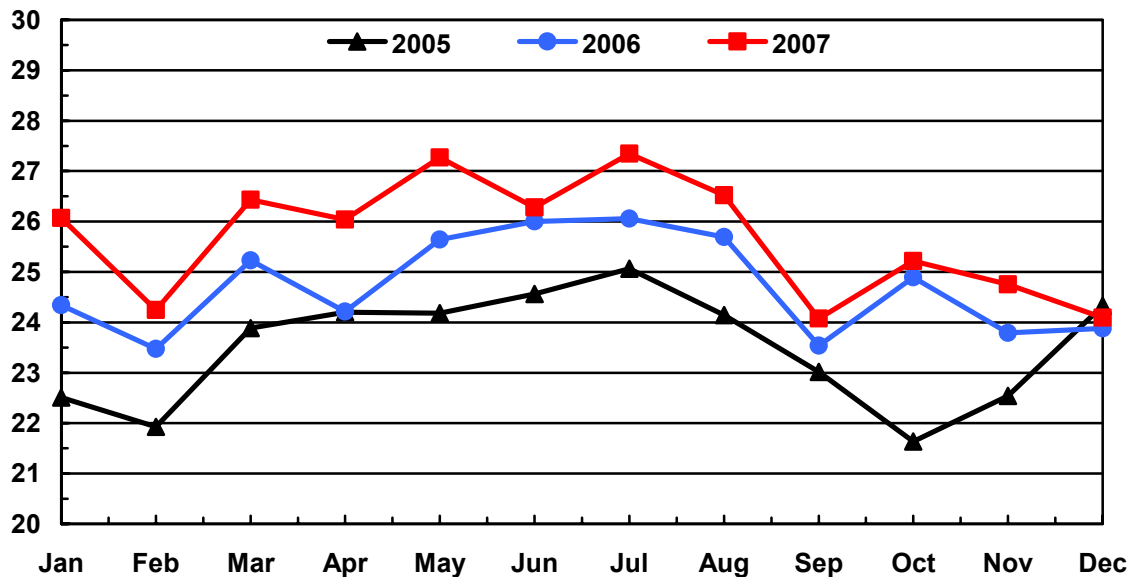
Turkey poults hatched during December 2007, in the United States totaled 24.9 million, up 2 percent from December 2006. Poults hatched were down 3 percent from the November 2007 total of 25.8 million poults. Regional changes from the previous year were: East North Central down 5 percent, West North Central up 7 percent, North and South Atlantic up 4 percent, and South Central and West down 9 percent.

Net Poults Placed During December Up 1 Percent from Last Year

The 24.1 million net poults placed during December 2007 in the United States were up 1 percent from the number placed during the same month a year earlier. Net placements were down 3 percent from the November 2007 total of 24.8 million.

Turkey Net Poulst Placements United States 2005 - 2007

Million Poults



**Eggs in Incubators: First of Month by Region
and United States, January 2008**

Region	Jan 1 2007	Dec 1 2007 ¹	Jan 1 2008	Percent of Previous Year	Percent of Previous Month
	<i>1,000</i>	<i>1,000</i>	<i>1,000</i>	<i>Percent</i>	<i>Percent</i>
E N Central	5,015	4,574	4,541	91	99
W N Central	12,029	11,460	12,231	102	107
N & S Atlantic ²	9,908	10,160	10,739	108	106
S Central & West ²	4,162	4,037	4,028	97	100
US	31,114	30,231	31,539	101	104

¹ Revised.

² Regions combined to avoid disclosure of individual operations.

**Poults Hatched: Entire Month by Region
and United States, December 2007**

Region	Dec 2006	Nov 2007 ¹	Dec 2007	Percent of Previous Year	Percent of Previous Month
	<i>1,000</i>	<i>1,000</i>	<i>1,000</i>	<i>Percent</i>	<i>Percent</i>
E N Central	3,993	4,037	3,793	95	94
W N Central	8,809	10,107	9,428	107	93
N & S Atlantic ²	8,073	8,533	8,410	104	99
S Central & West ²	3,570	3,084	3,266	91	106
US	24,445	25,761	24,897	102	97

¹ Revised.

² Regions combined to avoid disclosure of individual operations.

**Net Poultry Placements: By Month,
United States, 2006-2008 ¹**

Month	Total All Breeds		Percent of Previous Year	Cumulative Total		Percent of Previous Year
	2006-07	2007-08		2006-07	2007-08	
	<i>1,000</i>	<i>1,000</i>	<i>Percent</i>	<i>1,000</i>	<i>1,000</i>	<i>Percent</i>
Sep	23,534	24,073	102	23,534	24,073	102
Oct	24,891	25,217	101	48,425	49,290	102
Nov ²	23,792	24,755	104	72,217	74,045	103
Dec	23,879	24,096	101	96,096	98,141	102
Jan				122,164		
Feb				146,413		
Mar				172,846		
Apr				198,886		
May				226,157		
Jun				252,434		
Jul				279,777		
Aug				306,300		

¹ Includes imports and excludes exports.

² Revised 2007 data only.

Regional Listing:

North Atlantic: CT, ME, MA, NH, NJ, NY, PA, RI, VT.
 East North Central: IL, IN, MI, OH, WI.
 West North Central: IA, KS, MN, MO, NE, ND, SD.
 South Atlantic: DE, FL, GA, MD, NC, SC, VA, WV.
 South Central: AL, AR, KY, LA, MS, OK, TN, TX.
 West: AZ, CA, CO, ID, MT, NM, NV, OR, UT, WA, WY.

Reliability of Turkey Hatchery Estimates

Survey Procedures: Data for turkey hatchery estimates are collected from all known turkey hatcheries. Individual NASS field offices maintain a list of all known turkey hatcheries and use known sources of hatcheries to update their lists. Approximately 40 hatcheries are contacted each month. All known turkey hatcheries are mailed a questionnaire as close to the first of the month as possible and given adequate time to respond via mail, fax, or EDR. Those that do not respond are contacted by phone. Care is exercised to ensure that all hatcheries are accounted for in the estimate.

Estimating Procedures: Sound statistical methodology is employed to derive the estimates from reported data. All data are analyzed for unusual values. Data from each operation are compared to their own past operating profile and to trends from similar operations. Data for missing operations were estimated based on similar operations or historical data. NASS field offices prepare these estimates by using a combination of survey indications and historic trends. Individual State estimates are reviewed by the Agricultural Statistics Board for reasonableness. Individual hatchery data are summed to State, regional, and U.S. totals. Only regional and U.S. level estimates are published due to the limited number of hatcheries involved. The Net Poultry Placement data includes imported poult from outside the U.S. and excludes poult exported outside the U.S.

Cumulative net poult placements beginning on September 1 and ending on August 31 are shown in the monthly "**Turkey Hatchery**" report. This time period corresponds with the placements of poult which will reach maturity and be available for slaughter during the calendar year.

States reporting turkey hatcheries are: Arkansas, California, Florida, Indiana, Massachusetts, Michigan, Minnesota, Missouri, North Carolina, Ohio, Oklahoma, Pennsylvania, Rhode Island, Texas, Utah, Virginia, West Virginia, and Wisconsin.

Revision Policy: Revisions are generally the result of late or corrected data. Revisions to the previous month are published in the monthly "**Turkey Hatchery**" report, while annual revisions are published in the "**Hatchery Production - Annual Summary**" report in April.

Reliability: Turkey hatchery estimates are based on a census of all known operating hatcheries and therefore, have no sampling error. However, estimates are subject to errors such as omission, duplication, and mistakes in reporting, recording, and processing the data. While these errors cannot be measured directly, they are minimized through strict quality controls in the data collection process and a careful review of all reported data for consistency and reasonableness.

To assist in evaluating the reliability of the estimates in this report, the "Root Mean Square Error" is shown for selected items in the following table. The "Root Mean Square Error" is a statistical measure based on past performance and is computed using the differences between first and final estimates. The "Root Mean Square Error" for turkey eggs in incubators over the past 10 years is 0.7 percent. This means that chances are 2 out of 3 that the final estimate will not be above or below the current estimate of 31.5 million eggs by more than 0.7 percent. Chances are 9 out of 10 that the difference will not exceed 1.3 percent.

Reliability of U.S. January 1 Turkey Hatchery Estimates ¹

Item	Root Mean Square Error	90 Percent Confidence Level		Difference Between First and Latest Estimates			Number of Years	
				Average	Smallest	Largest	First Above Latest	First Below Latest
Eggs In Incubators	<i>Percent</i> 0.7	<i>Percent</i> 1.3	<i>1,000</i> 408	<i>1,000</i> 148	<i>1,000</i> 0	<i>1,000</i> 558	<i>Number</i> 7	<i>Number</i> 2

¹ Based on data for the past 10 years.

Information Contacts

Listed below are the commodity specialists in the Livestock Branch of the National Agricultural Statistics Service to contact for additional information.

Dan Kerestes, Chief, Livestock Branch..... (202) 720-3570

Darin Jantzi, Head, Poultry and Specialty Commodities Section..... (202) 720-3570

David Colwell - Cold Storage (202) 720-8784

Fleming Gibson - Egg Products, Poultry Slaughter, Catfish Processing, Mink (202) 690-3237

Sharyn Lavender - Broiler Hatchery, Chicken Hatchery, Honey (202) 720-3244

Kim Linonis - Layers, Eggs..... (202) 690-8632

Toby Paterson - Catfish Production, Trout Production, Census of Aquaculture,
Turkey Hatchery, Turkeys Raised (202) 720-0585

ACCESS TO REPORTS!!

For your convenience, there are several ways to obtain NASS reports, data products, and services:

INTERNET ACCESS

All NASS reports are available free of charge on the worldwide Internet. For access, connect to the Internet and go to the NASS Home Page at: www.nass.usda.gov.

E-MAIL SUBSCRIPTION

All NASS reports are available by subscription free of charge direct to your e-mail address. Starting with the NASS Home Page at www.nass.usda.gov, under the right navigation, *Receive reports by Email*, click on **National** or **State**. Follow the instructions on the screen.

PRINTED REPORTS OR DATA PRODUCTS

CALL OUR TOLL-FREE ORDER DESK: 800-999-6779 (U.S. and Canada)
Other areas, please call 703-605-6220 FAX: 703-605-6900
(Visa, MasterCard, check, or money order acceptable for payment.)

ASSISTANCE

For **assistance** with general agricultural statistics or further information about NASS or its products or services, contact the **Agricultural Statistics Hotline** at **800-727-9540**, 7:30 a.m. to 4:00 p.m. ET, or e-mail: nass@nass.usda.gov.

The U.S. Department of Agriculture (USDA) prohibits discrimination in all its programs and activities on the basis of race, color, national origin, age, disability, and where applicable, sex, marital status, familial status, parental status, religion, sexual orientation, genetic information, political beliefs, reprisal, or because all or a part of an individual's income is derived from any public assistance program. (Not all prohibited bases apply to all programs.) Persons with disabilities who require alternative means for communication of program information (Braille, large print, audiotape, etc.) should contact USDA's TARGET Center at (202) 720-2600 (voice and TDD).

To file a complaint of discrimination, write to USDA, Director, Office of Civil Rights, 1400 Independence Avenue, S.W., Washington, D.C. 20250-9410, or call (800) 795-3272 (voice) or (202) 720-6382 (TDD). USDA is an equal opportunity provider and employer.