

# Turkey Hatchery

Released March 14, 2008, by the National Agricultural Statistics Service (NASS), Agricultural Statistics Board, U.S. Department of Agriculture. For information on *Turkey Hatchery* call Toby Paterson at (202) 720-0585, office hours 7:30 a.m. to 4:00 p.m. ET.

## Eggs in Incubators on March 1 Up 2 Percent from Last Year

Turkey eggs in incubators on March 1, 2008, in the United States totaled 31.9 million, up 2 percent from March 1, 2007. Eggs in incubators were up 1 percent from the February 1, 2008 total of 31.5 million eggs. Regional changes from the previous year were: East North Central down 7 percent, West North Central unchanged, North and South Atlantic up 7 percent, and South Central and West up 8 percent.

## Poults Hatched During February Up 4 Percent from Last Year

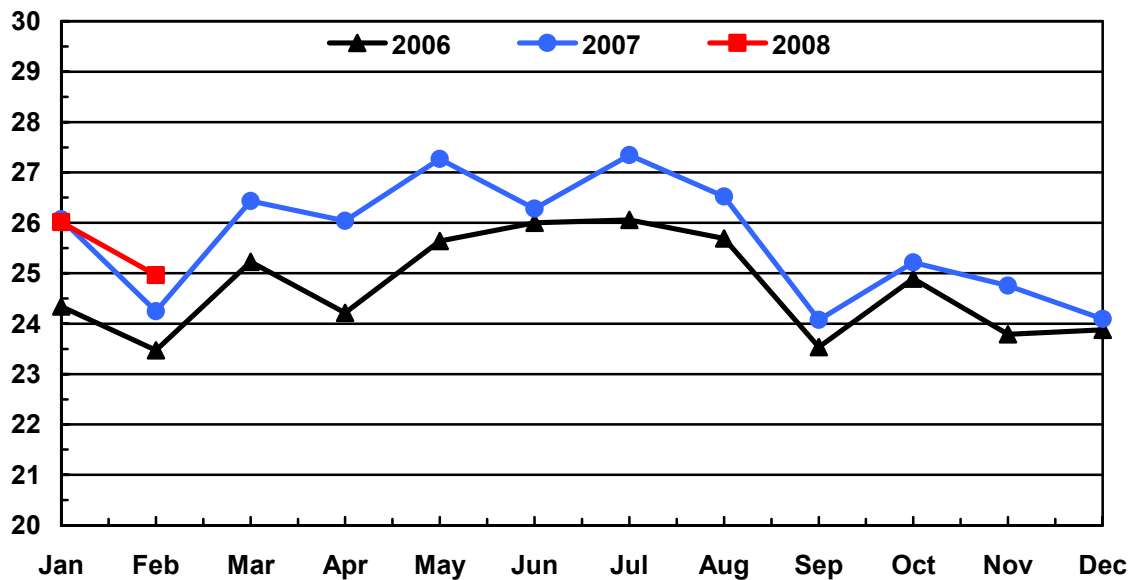
Turkey poults hatched during February 2008, in the United States totaled 25.8 million, up 4 percent from February 2007. Poults hatched were down 5 percent from the January 2008 total of 27.0 million poults. Regional changes from the previous year were: East North Central up 2 percent, West North Central up 4 percent, North and South Atlantic up 12 percent, and South Central and West down 10 percent.

## Net Poults Placed During February Up 3 Percent from Last Year

The 25.0 million net poults placed during February 2008 in the United States were up 3 percent from the number placed during the same month a year earlier. Net placements were down 4 percent from the January 2008 total of 26.1 million.

## Turkey Net Poult Placements United States 2006 - 2008

Million Poults



**Eggs in Incubators: First of Month by Region  
and United States, March 2008**

Region	Mar 1 2007	Feb 1 2008 <sup>1</sup>	Mar 1 2008	Percent of Previous Year	Percent of Previous Month
	<i>1,000</i>	<i>1,000</i>	<i>1,000</i>	<i>Percent</i>	<i>Percent</i>
E N Central	4,910	4,821	4,565	93	95
W N Central	12,098	12,005	12,099	100	101
N & S Atlantic <sup>2</sup>	9,782	10,761	10,509	107	98
S Central & West <sup>2</sup>	4,419	3,893	4,754	108	122
US	31,209	31,480	31,927	102	101

<sup>1</sup> Revised.

<sup>2</sup> Regions combined to avoid disclosure of individual operations.

**Poults Hatched: Entire Month by Region  
and United States, February 2008**

Region	Feb 2007	Jan 2008 <sup>1</sup>	Feb 2008	Percent of Previous Year	Percent of Previous Month
	<i>1,000</i>	<i>1,000</i>	<i>1,000</i>	<i>Percent</i>	<i>Percent</i>
E N Central	3,943	3,935	4,005	102	102
W N Central	9,613	10,272	10,019	104	98
N & S Atlantic <sup>2</sup>	7,702	9,591	8,603	112	90
S Central & West <sup>2</sup>	3,491	3,233	3,155	90	98
US	24,749	27,031	25,782	104	95

<sup>1</sup> Revised.

<sup>2</sup> Regions combined to avoid disclosure of individual operations.

**Net Poultry Placements: By Month,  
United States, 2006-2008 <sup>1</sup>**

Month	Total All Breeds		Percent of Previous Year	Cumulative Total		Percent of Previous Year
	2006-07	2007-08		2006-07	2007-08	
	<i>1,000</i>	<i>1,000</i>	<i>Percent</i>	<i>1,000</i>	<i>1,000</i>	<i>Percent</i>
Sep	23,534	24,073	102	23,534	24,073	102
Oct	24,891	25,217	101	48,425	49,290	102
Nov	23,792	24,755	104	72,217	74,045	103
Dec	23,879	24,096	101	96,096	98,141	102
Jan <sup>2</sup>	26,068	26,067	100	122,164	124,208	102
Feb	24,249	24,963	103	146,413	149,171	102
Mar	26,433			172,846		
Apr	26,040			198,886		
May	27,271			226,157		
Jun	26,277			252,434		
Jul	27,343			279,777		
Aug	26,523			306,300		

<sup>1</sup> Includes imports and excludes exports.

<sup>2</sup> Revised 2008 data only.

**Regional Listing:**

North Atlantic: CT, ME, MA, NH, NJ, NY, PA, RI, VT.  
 East North Central: IL, IN, MI, OH, WI.  
 West North Central: IA, KS, MN, MO, NE, ND, SD.  
 South Atlantic: DE, FL, GA, MD, NC, SC, VA, WV.  
 South Central: AL, AR, KY, LA, MS, OK, TN, TX.  
 West: AZ, CA, CO, ID, MT, NM, NV, OR, UT, WA, WY.

## Reliability of Turkey Hatchery Estimates

**Survey Procedures:** Data for turkey hatchery estimates are collected from all known turkey hatcheries. Individual NASS field offices maintain a list of all known turkey hatcheries and use known sources of hatcheries to update their lists. Approximately 40 hatcheries are contacted each month. All known turkey hatcheries are mailed a questionnaire as close to the first of the month as possible and given adequate time to respond via mail, fax, or EDR. Those that do not respond are contacted by phone. Care is exercised to ensure that all hatcheries are accounted for in the estimate.

**Estimating Procedures:** Sound statistical methodology is employed to derive the estimates from reported data. All data are analyzed for unusual values. Data from each operation are compared to their own past operating profile and to trends from similar operations. Data for missing operations were estimated based on similar operations or historical data. NASS field offices prepare these estimates by using a combination of survey indications and historic trends. Individual State estimates are reviewed by the Agricultural Statistics Board for reasonableness. Individual hatchery data are summed to State, regional, and U.S. totals. Only regional and U.S. level estimates are published due to the limited number of hatcheries involved. The Net Poultry Placement data includes imported poult from outside the U.S. and excludes poult exported outside the U.S.

Cumulative net poult placements beginning on September 1 and ending on August 31 are shown in the monthly "**Turkey Hatchery**" report. This time period corresponds with the placements of poult which will reach maturity and be available for slaughter during the calendar year.

States reporting turkey hatcheries are: Arkansas, California, Florida, Indiana, Massachusetts, Michigan, Minnesota, Missouri, North Carolina, Ohio, Oklahoma, Pennsylvania, Rhode Island, Texas, Utah, Virginia, West Virginia, and Wisconsin.

**Revision Policy:** Revisions are generally the result of late or corrected data. Revisions to the previous month are published in the monthly "**Turkey Hatchery**" report, while annual revisions are published in the "**Hatchery Production - Annual Summary**" report in April.

**Reliability:** Turkey hatchery estimates are based on a census of all known operating hatcheries and therefore, have no sampling error. However, estimates are subject to errors such as omission, duplication, and mistakes in reporting, recording, and processing the data. While these errors cannot be measured directly, they are minimized through strict quality controls in the data collection process and a careful review of all reported data for consistency and reasonableness.

To assist in evaluating the reliability of the estimates in this report, the "Root Mean Square Error" is shown for selected items in the following table. The "Root Mean Square Error" is a statistical measure based on past performance and is computed using the differences between first and final estimates. The "Root Mean Square Error" for turkey eggs in incubators over the past 10 years is 0.8 percent. This means that chances are 2 out of 3 that the final estimate will not be above or below the current estimate of 31.9 million eggs by more than 0.8 percent. Chances are 9 out of 10 that the difference will not exceed 1.5 percent.

**Reliability of U.S. March 1 Turkey Hatchery Estimates <sup>1</sup>**

Item	Root Mean Square Error	90 Percent Confidence Level		Difference Between First and Latest Estimates			Number of Years	
				Average	Smallest	Largest	First Above Latest	First Below Latest
Eggs In Incubators	<i>Percent</i> 0.8	<i>Percent</i> 1.5	<i>1,000</i> 478	<i>1,000</i> 152	<i>1,000</i> 0	<i>1,000</i> 672	<i>Number</i> 2	<i>Number</i> 6

<sup>1</sup> Based on data for the past 10 years.

## Information Contacts

Listed below are the commodity specialists in the Livestock Branch of the National Agricultural Statistics Service to contact for additional information.

Dan Kerestes, Chief, Livestock Branch.....	(202) 720-3570
Darin Jantzi, Head, Poultry and Specialty Commodities Section.....	(202) 720-3570
David Colwell - Cold Storage .....	(202) 720-8784
Fleming Gibson - Egg Products, Poultry Slaughter, Catfish Processing, Mink .....	(202) 690-3237
Sharyn Lavender - Broiler Hatchery, Chicken Hatchery, Honey .....	(202) 720-3244
Kim Linonis - Layers, Eggs.....	(202) 690-8632
Toby Paterson - Catfish Production, Trout Production, Census of Aquaculture, Turkey Hatchery, Turkeys Raised .....	(202) 720-0585

## ACCESS TO REPORTS!!

---

For your convenience, there are several ways to obtain NASS reports, data products, and services:

### INTERNET ACCESS

All NASS reports are available free of charge on the worldwide Internet. For access, connect to the Internet and go to the NASS Home Page at: [www.nass.usda.gov](http://www.nass.usda.gov).

### E-MAIL SUBSCRIPTION

All NASS reports are available by subscription free of charge direct to your e-mail address. Starting with the NASS Home Page at [www.nass.usda.gov](http://www.nass.usda.gov), under the right navigation, *Receive reports by Email*, click on **National** or **State**. Follow the instructions on the screen.

-----

### PRINTED REPORTS OR DATA PRODUCTS

**CALL OUR TOLL-FREE ORDER DESK: 800-999-6779 (U.S. and Canada)**  
**Other areas, please call 703-605-6220      FAX: 703-605-6900**  
**(Visa, MasterCard, check, or money order acceptable for payment.)**

-----

### ASSISTANCE

For **assistance** with general agricultural statistics or further information about NASS or its products or services, contact the **Agricultural Statistics Hotline** at **800-727-9540**, 7:30 a.m. to 4:00 p.m. ET, or e-mail: [nass@nass.usda.gov](mailto:nass@nass.usda.gov).

The U.S. Department of Agriculture (USDA) prohibits discrimination in all its programs and activities on the basis of race, color, national origin, age, disability, and where applicable, sex, marital status, familial status, parental status, religion, sexual orientation, genetic information, political beliefs, reprisal, or because all or a part of an individual's income is derived from any public assistance program. (Not all prohibited bases apply to all programs.) Persons with disabilities who require alternative means for communication of program information (Braille, large print, audiotape, etc.) should contact USDA's TARGET Center at (202) 720-2600 (voice and TDD).

To file a complaint of discrimination, write to USDA, Director, Office of Civil Rights, 1400 Independence Avenue, S.W., Washington, D.C. 20250-9410, or call (800) 795-3272 (voice) or (202) 720-6382 (TDD). USDA is an equal opportunity provider and employer.