

Turkey Hatchery

Released August 14, 2008, by the National Agricultural Statistics Service (NASS), Agricultural Statistics Board, U.S. Department of Agriculture. For information on *Turkey Hatchery* call Fleming Gibson at (202) 690-3237, office hours 7:30 a.m. to 4:00 p.m. ET.

Eggs in Incubators on August 1 Down 5 Percent from Last Year

Turkey eggs in incubators on August 1, 2008, in the United States totaled 31.9 million, down 5 percent from August 1, 2007. Eggs in incubators were down 3 percent from the July 1, 2008 total of 32.8 million eggs. Regional changes from the previous year were: East North Central down 7 percent, West North Central down 4 percent, North and South Atlantic down 3 percent, and South Central and West down 8 percent.

Poults Hatched During July Up 1 Percent from Last Year

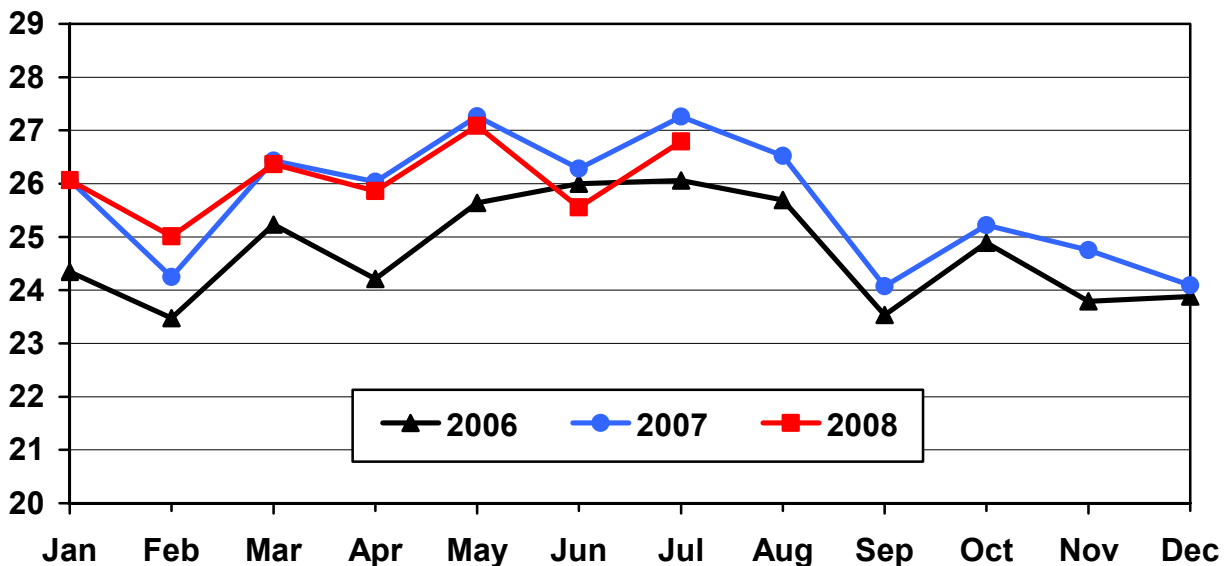
Turkey poults hatched during July 2008, in the United States totaled 27.5 million, up 1 percent from July 2007. Poults hatched were up 5 percent from June 2008 total of 26.2 million poults. Regional changes from the previous year were: East North Central up slightly, West North Central down 3 percent, North and South Atlantic up 4 percent, and South Central and West up 3 percent.

Net Poults Placed During July Down 2 Percent from Last Year

The 26.8 million net poults placed during July 2008 in the United States were down 2 percent from the number placed during the same month a year earlier. Net placements were up 5 percent from the June 2008 total of 25.6 million.

U.S. Turkey Net Poult Placements

Million Poults



Eggs in Incubators: First of Month by Region and United States, August 2008

Region	Aug 1 2007	Jul 1 2008 ¹	Aug 1 2008	Percent of Previous Year	Percent of Previous Month
	<i>1,000</i>	<i>1,000</i>	<i>1,000</i>	<i>Percent</i>	<i>Percent</i>
E N Central	4,954	4,776	4,599	93	96
W N Central	12,808	12,279	12,335	96	100
N & S Atlantic ²	10,876	10,678	10,524	97	99
S Central & West ²	4,819	5,081	4,425	92	87
US	33,457	32,814	31,883	95	97

¹ Revised.

² Regions combined to avoid disclosure of individual operations.

Poults Hatched: Entire Month by Region and United States, July 2008

Region	Jul 2007	Jun 2008 ¹	Jul 2008	Percent of Previous Year	Percent of Previous Month
	<i>1,000</i>	<i>1,000</i>	<i>1,000</i>	<i>Percent</i>	<i>Percent</i>
E N Central	4,099	3,913	4,104	100	105
W N Central	10,416	9,871	10,120	97	103
N & S Atlantic ²	8,844	8,870	9,176	104	103
S Central & West ²	3,943	3,542	4,063	103	115
US	27,302	26,196	27,463	101	105

¹ Revised.

² Regions combined to avoid disclosure of individual operations.

Net Poultry Placements: By Month, United States, 2006-2008 ¹

Month	Total All Breeds		Percent of Previous Year	Cumulative Total		Percent of Previous Year
	2006-07	2007-08		2006-07	2007-08	
	<i>1,000</i>	<i>1,000</i>	<i>Percent</i>	<i>1,000</i>	<i>1,000</i>	<i>Percent</i>
Sep	23,534	24,073	102	23,534	24,073	102
Oct	24,891	25,222	101	48,425	49,295	102
Nov	23,792	24,755	104	72,217	74,050	103
Dec	23,879	24,091	101	96,096	98,141	102
Jan	26,068	26,067	100	122,164	124,208	102
Feb	24,249	25,011	103	146,413	149,219	102
Mar	26,433	26,369	100	172,846	175,588	102
Apr	26,034	25,863	99	198,880	201,451	101
May	27,266	27,084	99	226,146	228,535	101
Jun ²	26,282	25,557	97	252,428	254,092	101
Jul	27,258	26,793	98	279,686	280,885	100
Aug	26,523			306,209		

¹ Includes imports and excludes exports.

² Revised 2008 data only.

Regional Listing:

North Atlantic: CT, ME, MA, NH, NJ, NY, PA, RI, VT.
 East North Central: IL, IN, MI, OH, WI.
 West North Central: IA, KS, MN, MO, NE, ND, SD.
 South Atlantic: DE, FL, GA, MD, NC, SC, VA, WV.
 South Central: AL, AR, KY, LA, MS, OK, TN, TX.
 West: AZ, CA, CO, ID, MT, NM, NV, OR, UT, WA, WY.

Reliability of Turkey Hatchery Estimates

Survey Procedures: Data for turkey hatchery estimates are collected from all known turkey hatcheries. Individual NASS field offices maintain a list of all known turkey hatcheries and use known sources of hatcheries to update their lists. Approximately 40 hatcheries are contacted each month. All known turkey hatcheries are mailed a questionnaire as close to the first of the month as possible and given adequate time to respond via mail, fax, or electronic data reporting (EDR). Those that do not respond are contacted by phone. Care is exercised to ensure that all hatcheries are accounted for in the estimate.

Estimating Procedures: Sound statistical methodology is employed to derive the estimates from reported data. All data are analyzed for unusual values. Data from each operation are compared to their own past operating profile and to trends from similar operations. Data for missing operations were estimated based on similar operations or historical data. NASS field offices prepare these estimates by using a combination of survey indications and historic trends. Individual State estimates are reviewed by the Agricultural Statistics Board for reasonableness. Individual hatchery data are summed to State, regional, and U.S. totals. Only regional and U.S. level estimates are published due to the limited number of hatcheries involved. The Net Poultry Placement data includes imported poults and excludes exported poults.

Cumulative net poultry placements beginning on September 1 and ending on August 31 are shown in the monthly "**Turkey Hatchery**" report. This time period corresponds with the placements of poults which will reach maturity and be available for slaughter during the calendar year.

States reporting turkey hatcheries are: Arkansas, California, Florida, Indiana, Massachusetts, Michigan, Minnesota, Missouri, North Carolina, Ohio, Oklahoma, Pennsylvania, Rhode Island, Texas, Utah, Virginia, West Virginia, and Wisconsin.

Revision Policy: Revisions are generally the result of late or corrected data. Revisions to the previous month are published in the monthly "**Turkey Hatchery**" report, while annual revisions are published in the "**Hatchery Production - Annual Summary**" report in April.

Reliability: Turkey hatchery estimates are based on a census of all known operating hatcheries and therefore, have no sampling error. However, estimates are subject to errors such as omission, duplication, and mistakes in reporting, recording, and processing the data. While these errors cannot be measured directly, they are minimized through strict quality controls in the data collection process and a careful review of all reported data for consistency and reasonableness.

To assist in evaluating the reliability of the estimates in this report, the "Root Mean Square Error" is shown for selected items in the following table. The "Root Mean Square Error" is a statistical measure based on past performance and is computed using the differences between first and final estimates. The "Root Mean Square Error" for turkey eggs in incubators over the past 24 months is 1.1 percent. This means that chances are 2 out of 3 that the final estimate will not be above or below the current estimate of 31.9 million eggs by more than 1.1 percent. Chances are 9 out of 10 that the difference will not exceed 1.9 percent.

Reliability of U.S. August 1 Turkey Hatchery Estimates ¹

Item	Root Mean Square Error	90 Percent Confidence Level			Difference Between First and Latest Estimates			Number of Months	
					Average	Smallest	Largest	First Above Latest	First Below Latest
		Percent	Percent	1,000	1,000	1,000	1,000	Number	Number
Eggs In Incubators	1.1	1.9	619	201	0	1,022	8	15	

¹ Based on data for the past 24 months.

Information Contacts

Listed below are the commodity specialists in the Livestock Branch of the National Agricultural Statistics Service to contact for additional information.

- Dan Kerestes, Chief, Livestock Branch..... (202) 720-3570
- Bruce Boess, Head, Poultry and Specialty Commodities Section (202) 720-4447
- David Colwell - Cold Storage (202) 720-8784
- Fleming Gibson - Poultry Slaughter, Turkey Hatchery, Turkeys Raised (202) 690-3237
- Sharyn Lavender - Broiler Hatchery, Chicken Hatchery, Honey (202) 720-3244
- Kim Linonis - Layers, Eggs..... (202) 690-8632
- Toby Paterson - Catfish Processing, Catfish Production, Trout Production,
Census of Aquaculture, Egg Products, Mink..... (202) 720-0585

ACCESS TO REPORTS!!

For your convenience, there are several ways to obtain NASS reports, data products, and services:

INTERNET ACCESS

All NASS reports are available free of charge on the worldwide Internet. For access, connect to the Internet and go to the NASS Home Page at: **www.nass.usda.gov**.

E-MAIL SUBSCRIPTION

All NASS reports are available by subscription free of charge direct to your e-mail address. Starting with the NASS Home Page at **www.nass.usda.gov**, under the right navigation, *Receive reports by Email*, click on **National** or **State**. Follow the instructions on the screen.

PRINTED REPORTS OR DATA PRODUCTS

CALL OUR TOLL-FREE ORDER DESK: 800-999-6779 (U.S. and Canada)
Other areas, please call 703-605-6220 FAX: 703-605-6900
(Visa, MasterCard, check, or money order acceptable for payment.)

ASSISTANCE

For **assistance** with general agricultural statistics or further information about NASS or its products or services, contact the **Agricultural Statistics Hotline** at **800-727-9540**, 7:30 a.m. to 4:00 p.m. ET, or e-mail: **nass@nass.usda.gov**.

The U.S. Department of Agriculture (USDA) prohibits discrimination in all its programs and activities on the basis of race, color, national origin, age, disability, and where applicable, sex, marital status, familial status, parental status, religion, sexual orientation, genetic information, political beliefs, reprisal, or because all or a part of an individual's income is derived from any public assistance program. (Not all prohibited bases apply to all programs.) Persons with disabilities who require alternative means for communication of program information (Braille, large print, audiotape, etc.) should contact USDA's TARGET Center at (202) 720-2600 (voice and TDD).

To file a complaint of discrimination, write to USDA, Director, Office of Civil Rights, 1400 Independence Avenue, S.W., Washington, D.C. 20250-9410, or call (800) 795-3272 (voice) or (202) 720-6382 (TDD). USDA is an equal opportunity provider and employer.