

Released February 13, 2009, by the National Agricultural Statistics Service (NASS), Agricultural Statistics Board, U.S. Department of Agriculture. For information on *Turkey Hatchery* call Fleming Gibson at (202) 690-3237, office hours 7:30 a.m. to 4:00 p.m. ET.

## Eggs in Incubators on February 1 Down 10 Percent from Last Year

Turkey eggs in incubators on February 1, 2009, in the United States totaled 28.4 million, down 10 percent from February 1, 2008. Eggs in incubators were down 4 percent from the January 1, 2009 total of 29.7 million eggs. Regional changes from the previous year were: East North Central down 11 percent, West North Central down 8 percent, North and South Atlantic down 5 percent, and South Central and West down 28 percent.

## Poults Hatched During January Down 8 Percent from Last Year

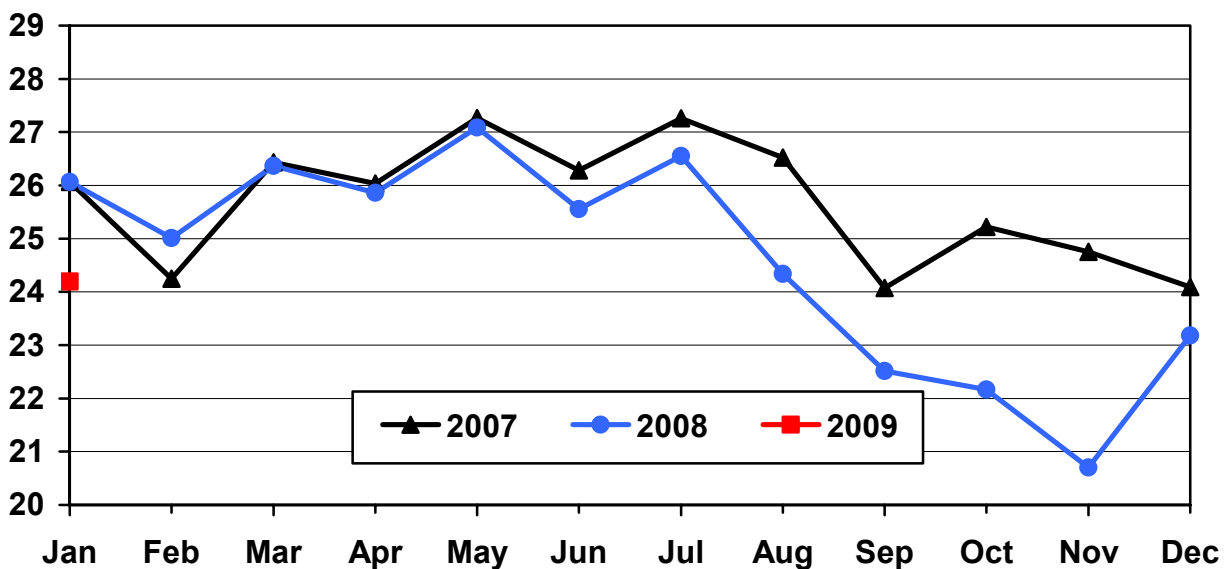
Turkey poults hatched during January 2009, in the United States totaled 24.9 million, down 8 percent from January 2008. Poults hatched were up 3 percent from December 2008 total of 24.3 million poults. Regional changes from the previous year were: East North Central down 3 percent, West North Central down 5 percent, North and South Atlantic down 9 percent, and South Central and West down 16 percent.

## Net Poults Placed During January Down 7 Percent from Last Year

The 24.2 million net poults placed during January 2009 in the United States were down 7 percent from the number placed during the same month a year earlier. Net placements were up 4 percent from the December 2008 total of 23.2 million.

## U.S. Turkey Net Poult Placements

Million Poults



**Eggs in Incubators: First of Month by Region and United States, February 2009**

Region	Feb 1 2008	Jan 1 2009	Feb 1 2009	Percent of Previous Year	Percent of Previous Month
	<i>1,000</i>	<i>1,000</i>	<i>1,000</i>	<i>Percent</i>	<i>Percent</i>
E N Central	4,821	4,403	4,298	89	98
W N Central	12,005	11,711	10,997	92	94
N & S Atlantic <sup>1</sup>	10,761	10,161	10,253	95	101
S Central & West <sup>1</sup>	3,893	3,389	2,803	72	83
US	31,480	29,664	28,351	90	96

<sup>1</sup> Regions combined to avoid disclosure of individual operations.

**Poults Hatched: Entire Month by Region and United States, January 2009**

Region	Jan 2008	Dec 2008	Jan 2009	Percent of Previous Year	Percent of Previous Month
	<i>1,000</i>	<i>1,000</i>	<i>1,000</i>	<i>Percent</i>	<i>Percent</i>
E N Central	3,935	3,602	3,798	97	105
W N Central	10,272	9,506	9,738	95	102
N & S Atlantic <sup>1</sup>	9,591	8,601	8,681	91	101
S Central & West <sup>1</sup>	3,233	2,580	2,730	84	106
US	27,031	24,289	24,947	92	103

<sup>1</sup> Regions combined to avoid disclosure of individual operations.

**Net Poultry Placements: By Month, United States, 2007-2009 <sup>1</sup>**

Month	Total All Breeds		Percent of Previous Year	Cumulative Total		Percent of Previous Year
	2007-08	2008-09		2007-08	2008-09	
	<i>1,000</i>	<i>1,000</i>	<i>Percent</i>	<i>1,000</i>	<i>1,000</i>	<i>Percent</i>
Sep	24,073	22,515	94	24,073	22,515	94
Oct	25,222	22,165	88	49,295	44,680	91
Nov	24,755	20,702	84	74,050	65,382	88
Dec <sup>2</sup>	24,091	23,179	96	98,141	88,561	90
Jan	26,067	24,195	93	124,208	112,756	91
Feb	25,011			149,219		
Mar	26,369			175,588		
Apr	25,863			201,451		
May	27,084			228,535		
Jun	25,557			254,092		
Jul	26,551			280,643		
Aug	24,337			304,980		

<sup>1</sup> Includes imports and excludes exports.

<sup>2</sup> Revised 2008 data only.

**Regional Listing:**

North Atlantic: CT, ME, MA, NH, NJ, NY, PA, RI, VT.  
 East North Central: IL, IN, MI, OH, WI.  
 West North Central: IA, KS, MN, MO, NE, ND, SD.  
 South Atlantic: DE, FL, GA, MD, NC, SC, VA, WV.  
 South Central: AL, AR, KY, LA, MS, OK, TN, TX.  
 West: AK, AZ, CA, CO, HI, ID, MT, NM, NV, OR, UT, WA, WY.

## Reliability of Turkey Hatchery Estimates

**Survey Procedures:** Data for turkey hatchery estimates are collected from all known turkey hatcheries. Individual NASS field offices maintain a list of all known turkey hatcheries and use known sources of hatcheries to update their lists. Approximately 40 hatcheries are contacted each month. All known turkey hatcheries are mailed a questionnaire as close to the first of the month as possible and given adequate time to respond via mail, fax, or electronic data reporting (EDR). Those that do not respond are contacted by phone. Care is exercised to ensure that all hatcheries are accounted for in the estimate.

**Estimating Procedures:** Sound statistical methodology is employed to derive the estimates from reported data. All data are analyzed for unusual values. Data from each operation are compared to their own past operating profile and to trends from similar operations. Data for missing operations were estimated based on similar operations or historical data. NASS field offices prepare these estimates by using a combination of survey indications and historic trends. Individual State estimates are reviewed by the Agricultural Statistics Board for reasonableness. Individual hatchery data are summed to State, regional, and U.S. totals. Only regional and U.S. level estimates are published due to the limited number of hatcheries involved. The Net Poultry Placement data includes imported poult and excludes exported poult.

Cumulative net poultry placements beginning on September 1 and ending on August 31 are shown in the monthly "**Turkey Hatchery**" report. This time period corresponds with the placements of poult which will reach maturity and be available for slaughter during the calendar year.

States reporting turkey hatcheries are: Arkansas, California, Florida, Indiana, Massachusetts, Michigan, Minnesota, Missouri, North Carolina, Ohio, Pennsylvania, Rhode Island, Texas, Utah, Virginia, West Virginia, and Wisconsin.

**Revision Policy:** Revisions are generally the result of late or corrected data. Revisions to the previous month are published in the monthly "**Turkey Hatchery**" report, while annual revisions are published in the "**Hatchery Production - Annual Summary**" report in May.

**Reliability:** Turkey hatchery estimates are based on a census of all known operating hatcheries and therefore, have no sampling error. However, estimates are subject to errors such as omission, duplication, and mistakes in reporting, recording, and processing the data. While these errors cannot be measured directly, they are minimized through strict quality controls in the data collection process and a careful review of all reported data for consistency and reasonableness.

To assist in evaluating the reliability of the estimates in this report, the "Root Mean Square Error" is shown for selected items in the following table. The "Root Mean Square Error" is a statistical measure based on past performance and is computed using the differences between first and final estimates. The "Root Mean Square Error" for turkey eggs in incubators on the first day of the month over the past 24 months is 1.0 percent. This means that chances are 2 out of 3 that the final estimate will not be above or below the current estimate of 28.4 million eggs by more than 1.0 percent. Chances are 9 out of 10 that the difference will not exceed 1.6 percent.

**Reliability of U.S. February Turkey Hatchery Estimates <sup>1</sup>**

Item	Root Mean Square Error	90 Percent Confidence Level			Difference Between First and Latest Estimates			Number of Months	
					Average	Smallest	Largest	First Above Latest	First Below Latest
	<i>Percent</i>	<i>Percent</i>	<i>1,000</i>	<i>1,000</i>	<i>1,000</i>	<i>1,000</i>	<i>Number</i>	<i>Number</i>	
Eggs In Incubators	1.0	1.6	467	171	0	1,022	8	12	
Poult Hatched	0.3	0.4	112	33	0	228	9	7	
Net Poultry Placements	0.9	1.5	372	161	0	570	14	8	

<sup>1</sup> Based on data for the past 24 months.

**Information Contacts**

Listed below are the commodity specialists in the Livestock Branch of the National Agricultural Statistics Service to contact for additional information.

- Dan Kerestes, Chief, Livestock Branch..... (202) 720-3570
- Bruce Boess, Head, Poultry and Specialty Commodities Section ..... (202) 720-4447
- David Colwell - Cold Storage ..... (202) 720-8784
- Fleming Gibson - Poultry Slaughter, Turkey Hatchery, Turkeys Raised ..... (202) 690-3237
- Sharyn Lavender - Broiler Hatchery, Chicken Hatchery, Honey ..... (202) 720-3244
- Kim Linonis - Layers, Eggs..... (202) 690-8632
- Bruce Boess - Catfish Processing, Catfish Production, Trout Production,  
        Census of Aquaculture, Egg Products, Mink..... (202) 720-4447

**ACCESS TO REPORTS!!**

---

For your convenience, there are several ways to obtain NASS reports, data products, and services:

**INTERNET ACCESS**

All NASS reports are available free of charge on the worldwide Internet. For access, connect to the Internet and go to the NASS Home Page at: **www.nass.usda.gov**.

**E-MAIL SUBSCRIPTION**

All NASS reports are available by subscription free of charge direct to your e-mail address. Starting with the NASS Home Page at **www.nass.usda.gov**, under the right navigation, *Receive reports by Email*, click on **National** or **State**. Follow the instructions on the screen.

-----  
**PRINTED REPORTS OR DATA PRODUCTS**

**CALL OUR TOLL-FREE ORDER DESK: 800-999-6779 (U.S. and Canada)**  
**Other areas, please call 703-605-6220                      FAX: 703-605-6900**  
**(Visa, MasterCard, check, or money order acceptable for payment.)**

-----  
**ASSISTANCE**

For **assistance** with general agricultural statistics or further information about NASS or its products or services, contact the **Agricultural Statistics Hotline** at **800-727-9540**, 7:30 a.m. to 4:00 p.m. ET, or e-mail: **nass@nass.usda.gov**.

The U.S. Department of Agriculture (USDA) prohibits discrimination in all its programs and activities on the basis of race, color, national origin, age, disability, and where applicable, sex, marital status, familial status, parental status, religion, sexual orientation, genetic information, political beliefs, reprisal, or because all or a part of an individual's income is derived from any public assistance program. (Not all prohibited bases apply to all programs.) Persons with disabilities who require alternative means for communication of program information (Braille, large print, audiotape, etc.) should contact USDA's TARGET Center at (202) 720-2600 (voice and TDD).

To file a complaint of discrimination, write to USDA, Director, Office of Civil Rights, 1400 Independence Avenue, S.W., Washington, D.C. 20250-9410, or call (800) 795-3272 (voice) or (202) 720-6382 (TDD). USDA is an equal opportunity provider and employer.