

Turkey Hatchery

Released August 14, 2009, by the National Agricultural Statistics Service (NASS), Agricultural Statistics Board, U.S. Department of Agriculture. For information on *Turkey Hatchery* call Troy Marshall at (202) 690-3237, office hours 7:30 a.m. to 4:00 p.m. ET.

Eggs in Incubators on August 1 Down 10 Percent from Last Year

Turkey eggs in incubators on August 1, 2009, in the United States totaled 28.6 million, down 10 percent from August 1, 2008. Eggs in incubators were down 5 percent from the July 1, 2009 total of 30.0 million eggs. Regional changes from the previous year were: East North Central down 9 percent, West North Central down 9 percent, North and South Atlantic down 13 percent, and South Central and West down 8 percent.

Poults Hatched During July Down 7 Percent from Last Year

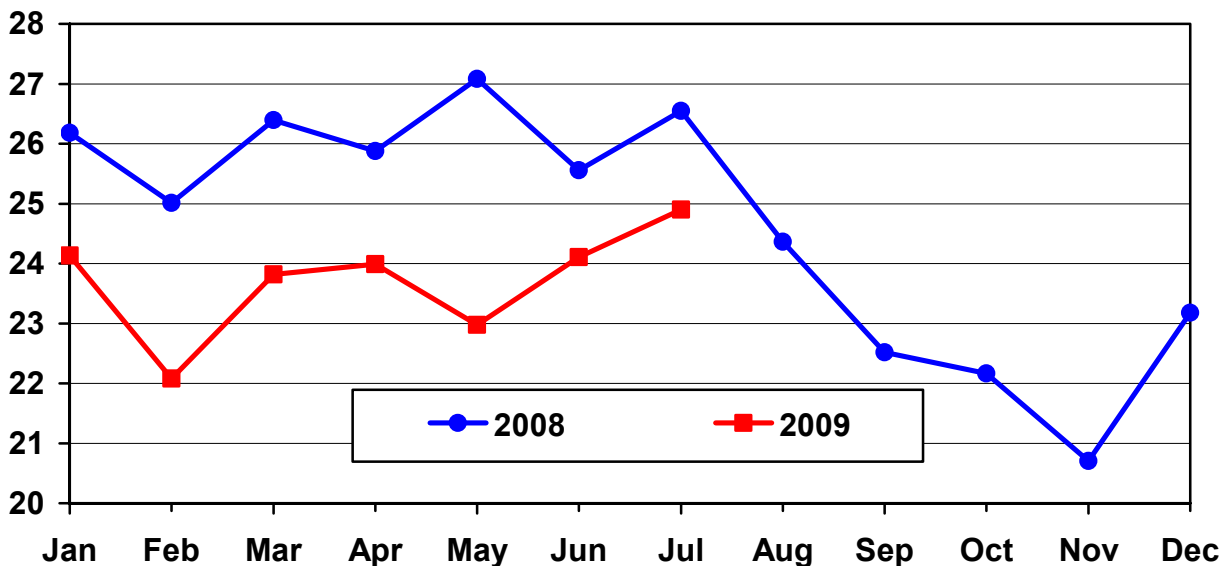
Turkey poults hatched during July 2009, in the United States totaled 25.6 million, down 7 percent from July 2008. Poults hatched were up 4 percent from June 2009 total of 24.6 million poults. Regional changes from the previous year were: East North Central down 9 percent, West North Central up 1 percent, North and South Atlantic down 14 percent, and South Central and West down 12 percent.

Net Poults Placed During July Down 6 Percent from Last Year

The 24.9 million net poults placed during July 2009 in the United States were down 6 percent from the number placed during the same month a year earlier. Net placements were up 3 percent from the June 2009 total of 24.1 million.

U.S. Turkey Net Poult Placements

Million Poults



Eggs in Incubators: First of Month by Region and United States, August 2009

Region	Aug 1 2008	Jul 1 2009 ¹	Aug 1 2009	Percent of Previous Year	Percent of Previous Month
	<i>1,000</i>	<i>1,000</i>	<i>1,000</i>	<i>Percent</i>	<i>Percent</i>
E N Central	4,599	4,371	4,190	91	96
W N Central	12,335	12,086	11,171	91	92
N & S Atlantic ²	10,875	9,089	9,472	87	104
S Central & West ²	4,074	4,442	3,754	92	85
US	31,883	29,988	28,587	90	95

¹ Revised.

² Regions combined to avoid disclosure of individual operations.

Poults Hatched: Entire Month by Region and United States, July 2009

Region	Jul 2008	Jun 2009 ¹	Jul 2009	Percent of Previous Year	Percent of Previous Month
	<i>1,000</i>	<i>1,000</i>	<i>1,000</i>	<i>Percent</i>	<i>Percent</i>
E N Central	4,094	3,806	3,709	91	97
W N Central	10,120	9,891	10,221	101	103
N & S Atlantic ²	9,358	7,842	8,089	86	103
S Central & West ²	4,063	3,055	3,575	88	117
US	27,635	24,594	25,594	93	104

¹ Revised.

² Regions combined to avoid disclosure of individual operations.

Net Poults Placements: By Month, United States, 2007-2009 ¹

Month	Total All Breeds		Percent of Previous Year	Cumulative Total		Percent of Previous Year
	2007-08	2008-09		2007-08	2008-09	
	<i>1,000</i>	<i>1,000</i>	<i>Percent</i>	<i>1,000</i>	<i>1,000</i>	<i>Percent</i>
Sep	24,073	22,515	94	24,073	22,515	94
Oct	25,222	22,165	88	49,295	44,680	91
Nov	24,755	20,702	84	74,050	65,382	88
Dec	24,091	23,179	96	98,141	88,561	90
Jan	26,183	24,131	92	124,324	112,692	91
Feb	25,011	22,079	88	149,335	134,771	90
Mar	26,394	23,817	90	175,729	158,588	90
Apr	25,880	23,988	93	201,609	182,576	91
May	27,084	22,975	85	228,693	205,551	90
Jun ²	25,557	24,107	94	254,250	229,658	90
Jul	26,551	24,900	94	280,801	254,558	91
Aug	24,363			305,164		

¹ Includes imports and excludes exports.

² Revised 2009 data only.

Regional Listing:

North Atlantic: CT, ME, MA, NH, NJ, NY, PA, RI, VT.
 East North Central: IL, IN, MI, OH, WI.
 West North Central: IA, KS, MN, MO, NE, ND, SD.
 South Atlantic: DE, FL, GA, MD, NC, SC, VA, WV.
 South Central: AL, AR, KY, LA, MS, OK, TN, TX.
 West: AK, AZ, CA, CO, HI, ID, MT, NM, NV, OR, UT, WA, WY.

Reliability of Turkey Hatchery Estimates

Survey Procedures: Data for turkey hatchery estimates are collected from all known turkey hatcheries. Individual NASS field offices maintain a list of all known turkey hatcheries and use known sources of hatcheries to update their lists. Approximately 40 hatcheries are contacted each month. All known turkey hatcheries are mailed a questionnaire as close to the first of the month as possible and given adequate time to respond via mail, fax, or electronic data reporting (EDR). Those that do not respond are contacted by phone. Care is exercised to ensure that all hatcheries are accounted for in the estimate.

Estimating Procedures: Sound statistical methodology is employed to derive the estimates from reported data. All data are analyzed for unusual values. Data from each operation are compared to their own past operating profile and to trends from similar operations. Data for missing operations were estimated based on similar operations or historical data. NASS field offices prepare these estimates by using a combination of survey indications and historic trends. Individual State estimates are reviewed by the Agricultural Statistics Board for reasonableness. Individual hatchery data are summed to State, regional, and U.S. totals. Only regional and U.S. level estimates are published due to the limited number of hatcheries involved. The Net Poultry Placement data includes imported poults and excludes exported poults.

Cumulative net poultry placements beginning on September 1 and ending on August 31 are shown in the monthly "**Turkey Hatchery**" report. This time period corresponds with the placements of poults which will reach maturity and be available for slaughter during the calendar year.

States reporting turkey hatcheries are: Arkansas, California, Florida, Indiana, Massachusetts, Michigan, Minnesota, Missouri, North Carolina, Ohio, Pennsylvania, Rhode Island, Texas, Virginia, West Virginia, and Wisconsin.

Revision Policy: Revisions are generally the result of late or corrected data. Revisions to the previous month are published in the monthly "**Turkey Hatchery**" report, while annual revisions are published in the "**Hatchery Production - Annual Summary**" report in May.

Reliability: Turkey hatchery estimates are based on a census of all known operating hatcheries and therefore, have no sampling error. However, estimates are subject to errors such as omission, duplication, and mistakes in reporting, recording, and processing the data. While these errors cannot be measured directly, they are minimized through strict quality controls in the data collection process and a careful review of all reported data for consistency and reasonableness.

To assist in evaluating the reliability of the estimates in this report, the "Root Mean Square Error" is shown for selected items in the following table. The "Root Mean Square Error" is a statistical measure based on past performance and is computed using the differences between first and final estimates. The "Root Mean Square Error" for turkey eggs in incubators on the first day of the month over the past 24 months is 0.5 percent. This means that chances are 2 out of 3 that the final estimate will not be above or below the current estimate of 28.6 million eggs by more than 0.5 percent. Chances are 9 out of 10 that the difference will not exceed 0.9 percent.

Reliability of U.S. August Turkey Hatchery Estimates ¹

Item	Root Mean Square Error	90 Percent Confidence Level			Difference Between First and Latest Estimates			Number of Months	
					Average	Smallest	Largest	First Above Latest	First Below Latest
		Percent	Percent	1,000	1,000	1,000	1,000	Number	Number
Eggs In Incubators	0.5	0.9	261	102	0	442	9	11	
Poults Hatched	0.3	0.5	136	48	0	228	10	7	
Net Poultry Placements	0.9	1.6	394	175	5	570	16	8	

¹ Based on data for the past 24 months.

Information Contacts

Listed below are the commodity specialists in the Livestock Branch of the National Agricultural Statistics Service to contact for additional information.

Dan Kerestes, Chief, Livestock Branch..... (202) 720-3570

Bruce Boess, Head, Poultry and Specialty Commodities Section (202) 720-4447

David Colwell - Cold Storage (202) 720-8784

Chris Hawthorn - Catfish Processing, Catfish Production, Trout Production,
Census of Aquaculture, Egg Products, Mink..... (202) 720-0585

Sharyn Lavender - Broiler Hatchery, Chicken Hatchery, Honey (202) 720-3244

Kim Linonis - Layers, Eggs..... (202) 690-8632

Troy Marshall - Poultry Slaughter, Turkey Hatchery, Turkeys Raised (202) 690-3237

ACCESS TO REPORTS!!

For your convenience, there are several ways to obtain NASS reports, data products, and services:

INTERNET ACCESS

All NASS reports are available free of charge. For free access, connect to the Internet and go to the NASS Home Page at: www.nass.usda.gov.

E-MAIL SUBSCRIPTION

All NASS reports are available by subscription free of charge direct to your e-mail address. Starting with the NASS Home Page at www.nass.usda.gov, under the right navigation, *Receive reports by Email*, click on **National** or **State**. Follow the instructions on the screen.

PRINTED REPORTS OR DATA PRODUCTS

CALL OUR TOLL-FREE ORDER DESK: 800-999-6779 (U.S. and Canada)
Other areas, please call 703-605-6220 FAX: 703-605-6900
(Visa, MasterCard, check, or money order acceptable for payment.)

ASSISTANCE

For **assistance** with general agricultural statistics or further information about NASS or its products or services, contact the **Agricultural Statistics Hotline** at **800-727-9540**, 7:30 a.m. to 4:00 p.m. ET, or e-mail: nass@nass.usda.gov.

The U.S. Department of Agriculture (USDA) prohibits discrimination in all its programs and activities on the basis of race, color, national origin, age, disability, and where applicable, sex, marital status, familial status, parental status, religion, sexual orientation, genetic information, political beliefs, reprisal, or because all or a part of an individual's income is derived from any public assistance program. (Not all prohibited bases apply to all programs.) Persons with disabilities who require alternative means for communication of program information (Braille, large print, audiotape, etc.) should contact USDA's TARGET Center at (202) 720-2600 (voice and TDD).

To file a complaint of discrimination, write to USDA, Director, Office of Civil Rights, 1400 Independence Avenue, S.W., Washington, D.C. 20250-9410, or call (800) 795-3272 (voice) or (202) 720-6382 (TDD). USDA is an equal opportunity provider and employer.