

# Turkey Hatchery

Released January 15, 2010, by the National Agricultural Statistics Service (NASS), Agricultural Statistics Board, U.S. Department of Agriculture. For information on *Turkey Hatchery* call Doug Bounds at (202) 690-3237, office hours 7:30 a.m. to 4:00 p.m. ET.

## Eggs in Incubators on January 1 Down 7 Percent from Last Year

Turkey eggs in incubators on January 1, 2010, in the United States totaled 27.5 million, down 7 percent from January 1, 2009. Eggs in incubators were up 4 percent from the December 1, 2009 total of 26.6 million eggs. Regional changes from the previous year were: East North Central down 8 percent, West North Central down 2 percent, North and South Atlantic down 10 percent, and South Central and West down 18 percent.

## Poults Hatched During December Down 7 Percent from Last Year

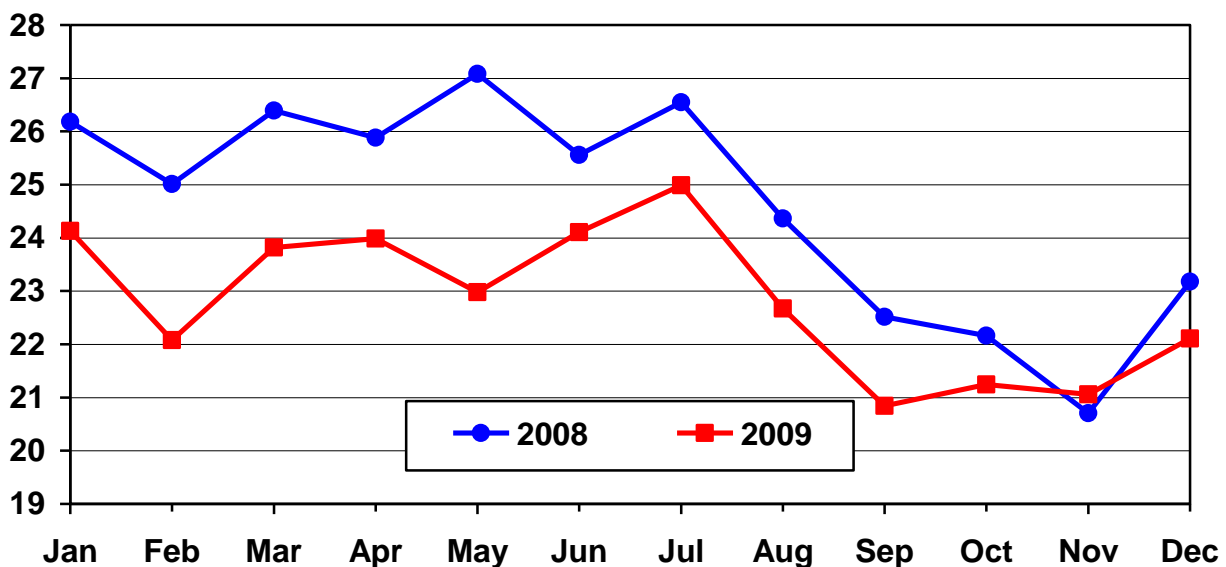
Turkey poults hatched during December 2009, in the United States totaled 22.6 million, down 7 percent from December 2008. Poults hatched were up 5 percent from the November 2009 total of 21.5 million poults. Regional changes from the previous year were: East North Central down 1 percent, West North Central up slightly, North and South Atlantic down 14 percent, and South Central and West down 19 percent.

## Net Poults Placed During December Down 5 Percent from Last Year

The 22.1 million net poults placed during December 2009 in the United States were down 5 percent from the number placed during the same month a year earlier. Net placements were up 5 percent from the November 2009 total of 21.1 million.

## U.S. Turkey Net Poult Placements

Million Poults



**Eggs in Incubators: First of Month by Region and United States, January 2010**

Region	Jan 1 2009	Dec 1 2009 <sup>1</sup>	Jan 1 2010	Percent of Previous Year	Percent of Previous Month
	<i>1,000</i>	<i>1,000</i>	<i>1,000</i>	<i>Percent</i>	<i>Percent</i>
E N Central	4,403	4,120	4,051	92	98
W N Central	11,711	11,166	11,462	98	103
N & S Atlantic <sup>2</sup>	10,161	8,722	9,191	90	105
S Central & West <sup>2</sup>	3,389	2,551	2,795	82	110
US	29,664	26,559	27,499	93	104

<sup>1</sup> Revised.

<sup>2</sup> Regions combined to avoid disclosure of individual operations.

**Poults Hatched: Entire Month by Region and United States, December 2009**

Region	Dec 2008	Nov 2009	Dec 2009	Percent of Previous Year	Percent of Previous Month
	<i>1,000</i>	<i>1,000</i>	<i>1,000</i>	<i>Percent</i>	<i>Percent</i>
E N Central	3,602	3,291	3,558	99	108
W N Central	9,506	9,172	9,534	100	104
N & S Atlantic <sup>1</sup>	8,601	6,783	7,422	86	109
S Central & West <sup>1</sup>	2,580	2,253	2,079	81	92
US	24,289	21,499	22,593	93	105

<sup>1</sup> Regions combined to avoid disclosure of individual operations.

**Net Poultry Placements: By Month, United States, 2008-2010 <sup>1</sup>**

Month	Total All Breeds		Percent of Previous Year	Cumulative Total		Percent of Previous Year
	2008-09	2009-10		2008-09	2009-10	
	<i>1,000</i>	<i>1,000</i>	<i>Percent</i>	<i>1,000</i>	<i>1,000</i>	<i>Percent</i>
Sep	22,515	20,843	93	22,515	20,843	93
Oct	22,165	21,245	96	44,680	42,088	94
Nov <sup>2</sup>	20,702	21,061	102	65,382	63,149	97
Dec	23,179	22,108	95	88,561	85,257	96
Jan	24,131			112,692		
Feb	22,079			134,771		
Mar	23,817			158,588		
Apr	23,988			182,576		
May	22,975			205,551		
Jun	24,107			229,658		
Jul	24,989			254,647		
Aug	22,674			277,321		

<sup>1</sup> Includes imports and excludes exports.

<sup>2</sup> Revised 2009 data only.

**Regional Listing:**

North Atlantic: CT, ME, MA, NH, NJ, NY, PA, RI, VT.

East North Central: IL, IN, MI, OH, WI.

West North Central: IA, KS, MN, MO, NE, ND, SD.

South Atlantic: DE, FL, GA, MD, NC, SC, VA, WV.

South Central: AL, AR, KY, LA, MS, OK, TN, TX.

West: AK, AZ, CA, CO, HI, ID, MT, NM, NV, OR, UT, WA, WY.

## Reliability of Turkey Hatchery Estimates

**Survey Procedures:** Data for turkey hatchery estimates are collected from all known turkey hatcheries. Individual NASS field offices maintain a list of all known turkey hatcheries and use known sources of hatcheries to update their lists. Approximately 40 hatcheries are contacted each month. All known turkey hatcheries are mailed a questionnaire as close to the first of the month as possible and given adequate time to respond via mail, fax, or electronic data reporting (EDR). Those that do not respond are contacted by phone. Care is exercised to ensure that all hatcheries are accounted for in the estimate.

**Estimating Procedures:** Sound statistical methodology is employed to derive the estimates from reported data. All data are analyzed for unusual values. Data from each operation are compared to their own past operating profile and to trends from similar operations. Data for missing operations were estimated based on similar operations or historical data. NASS field offices prepare these estimates by using a combination of survey indications and historic trends. Individual State estimates are reviewed by the Agricultural Statistics Board for reasonableness. Individual hatchery data are summed to State, regional, and U.S. totals. Only regional and U.S. level estimates are published due to the limited number of hatcheries involved. The Net Poultry Placement data includes imported poults and excludes exported poults.

Cumulative net poultry placements beginning on September 1 and ending on August 31 are shown in the monthly "**Turkey Hatchery**" report. This time period corresponds with the placements of poults which will reach maturity and be available for slaughter during the calendar year.

States reporting turkey hatcheries are: Arkansas, California, Florida, Indiana, Massachusetts, Michigan, Minnesota, Missouri, North Carolina, Ohio, Pennsylvania, Rhode Island, Texas, Virginia, West Virginia, and Wisconsin.

**Revision Policy:** Revisions are generally the result of late or corrected data. Revisions to the previous month are published in the monthly "**Turkey Hatchery**" report, while annual revisions are published in the "**Hatchery Production - Annual Summary**" report in May.

**Reliability:** Turkey hatchery estimates are based on a census of all known operating hatcheries and therefore, have no sampling error. However, estimates are subject to errors such as omission, duplication, and mistakes in reporting, recording, and processing the data. While these errors cannot be measured directly, they are minimized through strict quality controls in the data collection process and a careful review of all reported data for consistency and reasonableness.

To assist in evaluating the reliability of the estimates in this report, the "Root Mean Square Error" is shown for selected items in the following table. The "Root Mean Square Error" is a statistical measure based on past performance and is computed using the differences between first and final estimates. The "Root Mean Square Error" for turkey eggs in incubators on the first day of the month over the past 24 months is 0.9 percent. This means that chances are 2 out of 3 that the final estimate will not be above or below the current estimate of 27.5 million eggs by more than 0.9 percent. Chances are 9 out of 10 that the difference will not exceed 1.6 percent.

**Reliability of U.S. January Turkey Hatchery Estimates <sup>1</sup>**

Item	Root Mean Square Error	90 Percent Confidence Level		Difference Between First and Latest Estimates			Number of Months	
				Average	Smallest	Largest	First Above Latest	First Below Latest
Eggs In Incubators	0.9	1.6	427	152	0	800	8	13
Poults Hatched	0.3	0.6	134	52	0	236	9	9
Net Poultry Placements	0.9	1.5	334	160	5	570	13	11

<sup>1</sup> Based on data for the past 24 months.

## Information Contacts

Listed below are the commodity specialists in the Livestock Branch of the National Agricultural Statistics Service to contact for additional information.

Dan Kerestes, Chief, Livestock Branch..... (202) 720-3570

Bruce Boess, Head, Poultry and Specialty Commodities Section ..... (202) 720-4447  
Doug Bounds - Poultry Slaughter, Turkey Hatchery, Turkeys Raised ..... (202) 690-3237  
David Colwell - Cold Storage ..... (202) 720-8784  
Chris Hawthorn - Catfish Processing, Catfish Production, Trout Production,  
Census of Aquaculture, Egg Products, Mink ..... (202) 720-0585  
Kim Linonis - Layers, Eggs..... (202) 690-8632  
Troy Marshall - Broiler Hatchery, Chicken Hatchery, Honey ..... (202) 720-3244

## ACCESS TO REPORTS!!

---

For your convenience, there are several ways to obtain NASS reports, data products, and services:

### INTERNET ACCESS

All NASS reports are available free of charge. For free access, connect to the Internet and go to the NASS Home Page at: [www.nass.usda.gov](http://www.nass.usda.gov).

### E-MAIL SUBSCRIPTION

All NASS reports are available by subscription free of charge direct to your e-mail address. Starting with the NASS Home Page at [www.nass.usda.gov](http://www.nass.usda.gov), under the right navigation, *Receive reports by Email*, click on **National** or **State**. Follow the instructions on the screen.

-----

### PRINTED REPORTS OR DATA PRODUCTS

**CALL OUR TOLL-FREE ORDER DESK: 800-999-6779 (U.S. and Canada)**  
**Other areas, please call 703-605-6220      FAX: 703-605-6880**  
**(Visa, MasterCard, check, or money order acceptable for payment.)**

-----

### ASSISTANCE

For **assistance** with general agricultural statistics or further information about NASS or its products or services, contact the **Agricultural Statistics Hotline** at **800-727-9540**, 7:30 a.m. to 4:00 p.m. ET, or e-mail: [nass@nass.usda.gov](mailto:nass@nass.usda.gov).

The U.S. Department of Agriculture (USDA) prohibits discrimination in all its programs and activities on the basis of race, color, national origin, age, disability, and where applicable, sex, marital status, familial status, parental status, religion, sexual orientation, genetic information, political beliefs, reprisal, or because all or a part of an individual's income is derived from any public assistance program. (Not all prohibited bases apply to all programs.) Persons with disabilities who require alternative means for communication of program information (Braille, large print, audiotape, etc.) should contact USDA's TARGET Center at (202) 720-2600 (voice and TDD).

To file a complaint of discrimination, write to USDA, Director, Office of Civil Rights, 1400 Independence Avenue, S.W., Washington, D.C. 20250-9410, or call (800) 795-3272 (voice) or (202) 720-6382 (TDD). USDA is an equal opportunity provider and employer.