

Turkey Hatchery

Released December 15, 2010, by the National Agricultural Statistics Service (NASS), Agricultural Statistics Board, U.S. Department of Agriculture. For information on *Turkey Hatchery* call Doug Bounds at (202) 690-3237, office hours 7:30 a.m. to 4:00 p.m. ET.

Eggs in Incubators on December 1 Up 4 Percent from Last Year

Turkey eggs in incubators on December 1, 2010, in the United States totaled 27.8 million, up 4 percent from December 1, 2009. Eggs in incubators were down 2 percent from the November 1, 2010 total of 28.4 million eggs. Regional changes from the previous year were: East North Central up 6 percent, West North Central up 2 percent, North and South Atlantic up 5 percent, and South Central and West up 12 percent.

Poults Hatched During November Up 11 Percent from Last Year

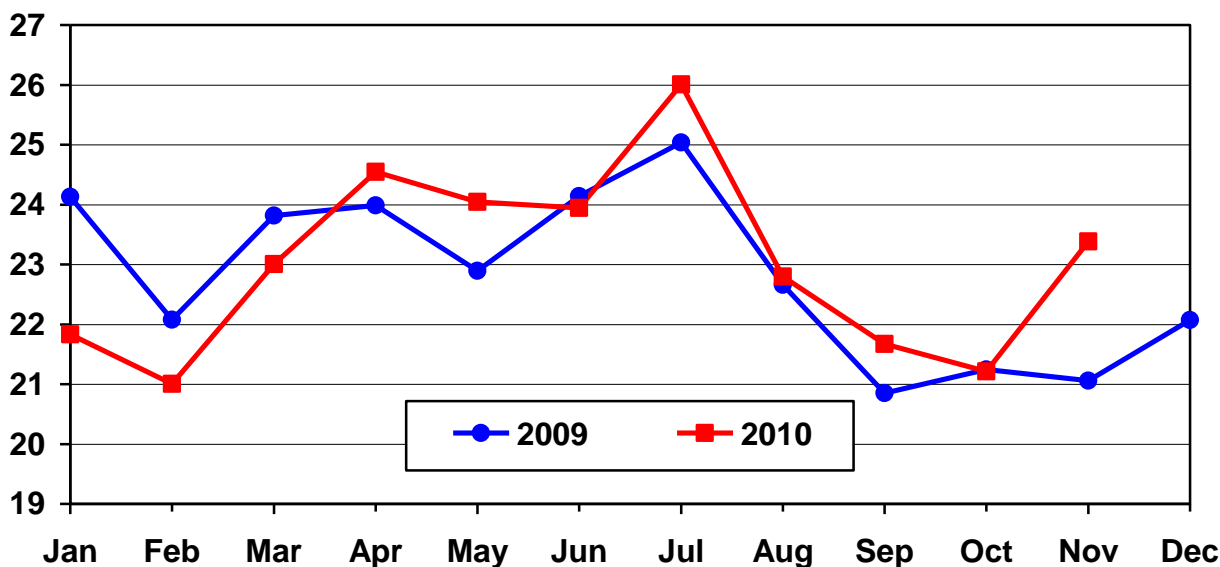
Turkey poults hatched during November 2010, in the United States totaled 23.8 million, up 11 percent from November 2009. Poults hatched were up 8 percent from the October 2010 total of 22.1 million poults. Regional changes from the previous year were: East North Central up 21 percent, West North Central up 8 percent, North and South Atlantic up 14 percent, and South Central and West down 1 percent.

Net Poults Placed During November Up 11 Percent from Last Year

The 23.4 million net poults placed during November 2010 in the United States were up 11 percent from the number placed during the same month a year earlier. Net placements were up 10 percent from the October 2010 total of 21.2 million.

U.S. Turkey Net Poult Placements

Million Poults



Eggs in Incubators: First of Month by Region and United States, December 2010

Region	Dec 1 2009	Nov 1 2010 ¹	Dec 1 2010	Percent of Previous Year	Percent of Previous Month
	<i>1,000</i>	<i>1,000</i>	<i>1,000</i>	<i>Percent</i>	<i>Percent</i>
E N Central	4,120	4,559	4,375	106	96
W N Central	11,166	11,694	11,339	102	97
N & S Atlantic ²	8,722	9,492	9,178	105	97
S Central & West ²	2,551	2,670	2,861	112	107
US	26,559	28,415	27,753	104	98

¹ Revised.

² Regions combined to avoid disclosure of individual operations.

Poults Hatched: Entire Month by Region and United States, November 2010

Region	Nov 2009	Oct 2010 ¹	Nov 2010	Percent of Previous Year	Percent of Previous Month
	<i>1,000</i>	<i>1,000</i>	<i>1,000</i>	<i>Percent</i>	<i>Percent</i>
E N Central	3,291	3,580	3,967	121	111
W N Central	9,172	9,555	9,921	108	104
N & S Atlantic ²	6,783	7,102	7,718	114	109
S Central & West ²	2,253	1,848	2,226	99	120
US	21,499	22,085	23,832	111	108

¹ Revised.

² Regions combined to avoid disclosure of individual operations.

Net Poultry Placements: By Month, United States, 2009-2011 ¹

Month	Total All Breeds		Percent of Previous Year	Cumulative Total		Percent of Previous Year
	2009-10	2010-11		2009-10	2010-11	
	<i>1,000</i>	<i>1,000</i>	<i>Percent</i>	<i>1,000</i>	<i>1,000</i>	<i>Percent</i>
Sep	20,852	21,670	104	20,852	21,670	104
Oct ²	21,245	21,211	100	42,097	42,881	102
Nov	21,061	23,383	111	63,158	66,264	105
Dec	22,074			85,232		
Jan	21,833			107,065		
Feb	21,005			128,070		
Mar	23,007			151,077		
Apr	24,546			175,623		
May	24,045			199,668		
Jun	23,946			223,614		
Jul	26,006			249,620		
Aug	22,798			272,418		

¹ Includes imports and excludes exports.

² Revised 2010 data only.

Regional Listing:

North Atlantic: CT, ME, MA, NH, NJ, NY, PA, RI, VT.

East North Central: IL, IN, MI, OH, WI.

West North Central: IA, KS, MN, MO, NE, ND, SD.

South Atlantic: DE, FL, GA, MD, NC, SC, VA, WV.

South Central: AL, AR, KY, LA, MS, OK, TN, TX.

West: AK, AZ, CA, CO, HI, ID, MT, NM, NV, OR, UT, WA, WY.

Reliability of Turkey Hatchery Estimates

Survey Procedures: Data for turkey hatchery estimates are collected from all known turkey hatcheries. Individual NASS field offices maintain a list of all known turkey hatcheries and use known sources of hatcheries to update their lists. Approximately 40 hatcheries are contacted each month. All known turkey hatcheries are mailed a questionnaire as close to the first of the month as possible and given adequate time to respond via mail, fax, or electronic data reporting (EDR). Those that do not respond are contacted by phone. Care is exercised to ensure that all hatcheries are accounted for in the estimate.

Estimating Procedures: Sound statistical methodology is employed to derive the estimates from reported data. All data are analyzed for unusual values. Data from each operation are compared to their own past operating profile and to trends from similar operations. Data for missing operations were estimated based on similar operations or historical data. NASS field offices prepare these estimates by using a combination of survey indications and historic trends. Individual State estimates are reviewed by the Agricultural Statistics Board for reasonableness. Individual hatchery data are summed to State, regional, and U.S. totals. Only regional and U.S. level estimates are published due to the limited number of hatcheries involved. The Net Poultry Placement data includes imported poults and excludes exported poults.

Cumulative net poultry placements beginning on September 1 and ending on August 31 are shown in the monthly "**Turkey Hatchery**" report. This time period corresponds with the placements of poults which will reach maturity and be available for slaughter during the calendar year.

States reporting turkey hatcheries are: Arkansas, California, Florida, Indiana, Massachusetts, Michigan, Minnesota, Missouri, North Carolina, Ohio, Pennsylvania, Rhode Island, Texas, Virginia, West Virginia, and Wisconsin.

Revision Policy: Revisions are generally the result of late or corrected data. Revisions to the previous month are published in the monthly "**Turkey Hatchery**" report, while annual revisions are published in the "**Hatchery Production - Annual Summary**" report in April.

Reliability: Turkey hatchery estimates are based on a census of all known operating hatcheries and therefore, have no sampling error. However, estimates are subject to errors such as omission, duplication, and mistakes in reporting, recording, and processing the data. While these errors cannot be measured directly, they are minimized through strict quality controls in the data collection process and a careful review of all reported data for consistency and reasonableness.

To assist in evaluating the reliability of the estimates in this report, the "Root Mean Square Error" is shown for selected items in the following table. The "Root Mean Square Error" is a statistical measure based on past performance and is computed using the differences between first and final estimates. The "Root Mean Square Error" for turkey eggs in incubators on the first day of the month over the past 24 months is 1.4 percent. This means that chances are 2 out of 3 that the final estimate will not be above or below the current estimate of 27.8 million eggs by more than 1.4 percent. Chances are 9 out of 10 that the difference will not exceed 2.4 percent.

Reliability of U.S. December Turkey Hatchery Estimates ¹

Item	Root Mean Square Error	90 Percent Confidence Level			Difference Between First and Latest Estimates			Number of Months	
					Average	Smallest	Largest	First Above Latest	First Below Latest
					<i>Percent</i>	<i>Percent</i>	<i>1,000</i>	<i>1,000</i>	<i>1,000</i>
Eggs In Incubators	1.4	2.4	659	249	0	886	6	17	
Poults Hatched	0.4	0.7	168	59	0	289	7	10	
Net Poultry Placements	1.0	1.7	393	169	18	570	10	14	

¹ Based on data for the past 24 months.

Information Contacts

Listed below are the commodity specialists in the Livestock Branch of the National Agricultural Statistics Service to contact for additional information.

Dan Kerestes, Chief, Livestock Branch..... (202) 720-3570

Bruce Boess, Head, Poultry and Specialty Commodities Section (202) 720-4447
Doug Bounds – Poultry Slaughter, Turkey Hatchery, Turkeys Raised (202) 690-3237
David Colwell – Cold Storage (202) 720-8784
Chris Hawthorn – Catfish Processing, Catfish Production, Trout Production,
Census of Aquaculture, Egg Products, Mink (202) 720-0585
Kim Linonis – Layers, Eggs (202) 690-8632
Troy Marshall – Broiler Hatchery, Chicken Hatchery, Honey (202) 720-3244

ACCESS TO REPORTS!!

For your convenience, there are several ways to obtain NASS reports, data products, and services:

INTERNET ACCESS

All NASS reports are available free of charge. For free access, connect to the Internet and go to the NASS Home Page at: www.nass.usda.gov.

E-MAIL SUBSCRIPTION

All NASS reports are available by subscription free of charge direct to your e-mail address. Starting with the NASS Home Page at www.nass.usda.gov, under the right navigation, *Receive reports by Email*, click on **National** or **State**. Follow the instructions on the screen.

PRINTED REPORTS OR DATA PRODUCTS

CALL OUR TOLL-FREE ORDER DESK: 800-999-6779 (U.S. and Canada)
Other areas, please call 703-605-6220 FAX: 703-605-6880
(Visa, MasterCard, check, or money order acceptable for payment.)

ASSISTANCE

For **assistance** with general agricultural statistics or further information about NASS or its products or services, contact the **Agricultural Statistics Hotline** at **800-727-9540**, 7:30 a.m. to 4:00 p.m. ET, or e-mail: nass@nass.usda.gov.

The U.S. Department of Agriculture (USDA) prohibits discrimination in all its programs and activities on the basis of race, color, national origin, age, disability, and where applicable, sex, marital status, familial status, parental status, religion, sexual orientation, political beliefs, genetic information, reprisal, or because all or a part of an individual's income is derived from any public assistance program. (Not all prohibited bases apply to all programs.) Persons with disabilities who require alternative means for communication of program information (Braille, large print, audiotape, etc.) should contact USDA's TARGET Center at (202) 720-2600 (voice and TDD).

To file a complaint of discrimination, write to USDA, Assistant Secretary for Civil Rights, Office of the Assistant Secretary for Civil Rights, 1400 Independence Avenue, S.W., Stop 9410, Washington, DC 20250-9410, or call toll-free at (866) 632-9992 (English) or (800) 877-8339 (TDD) or (866) 377-8642 (English Federal-relay) or (800) 845-6136 (Spanish Federal-relay). USDA is an equal opportunity provider and employer.