

Released October 14, 2011, by the National Agricultural Statistics Service (NASS), Agricultural Statistics Board, United States Department of Agriculture (USDA).

Eggs in Incubators on October 1 Up 5 Percent from Last Year

Turkey eggs in incubators on October 1, 2011, in the United States totaled 27.5 million, up 5 percent from October 1, 2010. Eggs in incubators were down 2 percent from the September 1, 2011 total of 28.1 million eggs.

Poults Hatched During September Up 8 Percent from Last Year

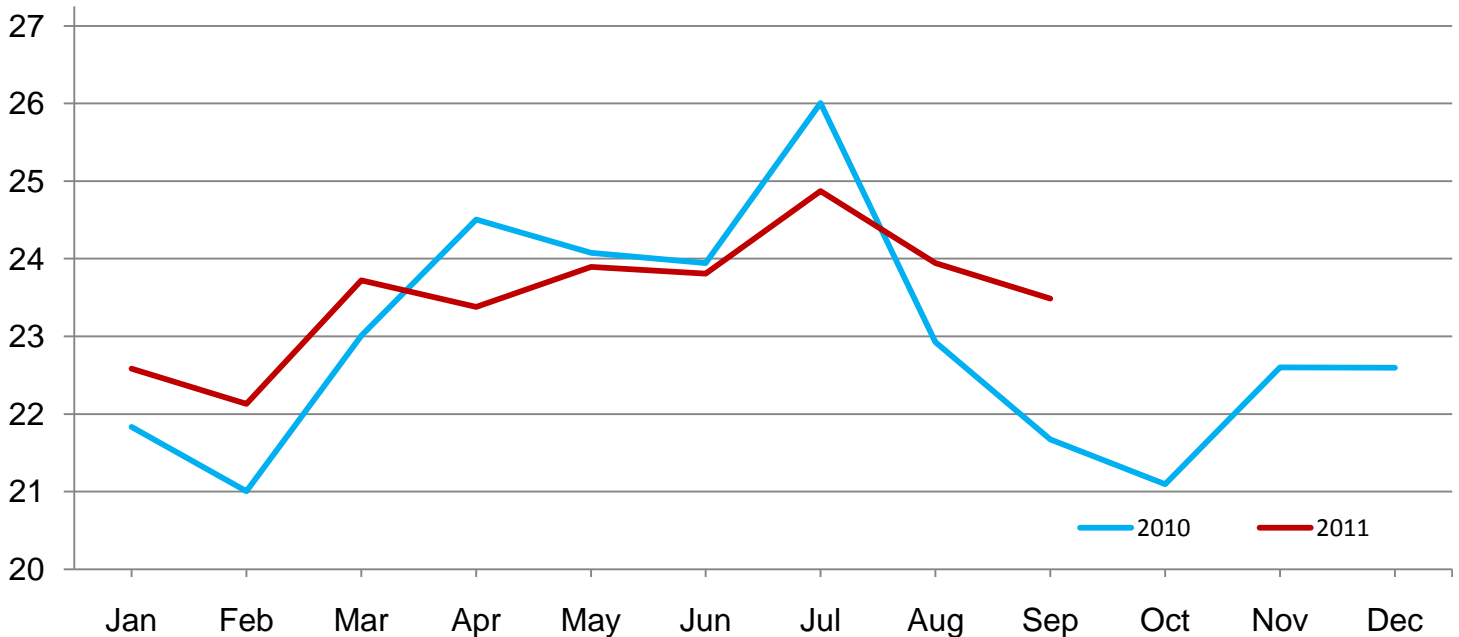
Turkey poults hatched during September 2011, in the United States totaled 23.8 million, up 8 percent from September 2010. Poults hatched were down slightly from the August 2011 total of 23.9 million poults.

Net Poults Placed During September Up 8 Percent from Last Year

The 23.5 million net poults placed during September 2011 in the United States were up 8 percent from the number placed during the same month a year earlier. Net placements were down 2 percent from the August 2011 total of 23.9 million.

Net Poults Placements – United States

Million poults



Eggs in Incubators and Poults Hatched by Month – United States: 2010-2012

[Blank data cells indicate estimation period has not yet begun]

Month	Eggs in incubators first of month		Percent of previous year	Poults hatched entire month		Percent of previous year
	2010-2011	2011-2012		2010-2011	2011-2012	
	(1,000 eggs)	(1,000 eggs)	(percent)	(1,000 poults)	(1,000 poults)	(percent)
September	26,353	28,072	107	22,065	23,829	108
October	26,223	27,510	105	22,085		
November	28,415			23,783		
December	27,327			23,519		
January	27,764			23,973		
February	28,431			23,079		
March	28,359			24,340		
April	27,720			23,735		
May	27,754			24,082		
June	28,215			23,812		
July	29,178			24,766		
August	28,427			23,887		

Net Poulst Placements by Month – United States: 2010-2012

[Includes imports and excludes exports. Blank data cells indicate estimation period has not yet begun]

Month	Total all breeds		Percent of previous year	Cumulative total		Percent of previous year
	2010-2011	2011-2012		2010-2011	2011-2012	
	(1,000 poults)	(1,000 poults)	(percent)	(1,000 poults)	(1,000 poults)	(percent)
September	21,672	23,485	108	21,672	23,485	108
October	21,094			42,766		
November	22,599			65,365		
December	22,596			87,961		
January	22,585			110,546		
February	22,130			132,676		
March	23,720			156,396		
April	23,378			179,774		
May	23,893			203,667		
June	23,810			227,477		
July	24,872			252,349		
August	23,946			276,295		

Statistical Methodology

Survey Procedures: Data for turkey hatchery estimates are collected from all known turkey hatcheries. Individual NASS field offices maintain a list of all known turkey hatcheries and use known sources of hatcheries to update their lists. Approximately 40 hatcheries are contacted each month. All known turkey hatcheries are mailed a questionnaire as close to the first of the month as possible and given adequate time to respond via mail, fax, or electronic data reporting (EDR). Those that do not respond are contacted by phone. Care is exercised to ensure that all hatcheries are accounted for in the estimate.

Estimating Procedures: Sound statistical methodology is employed to derive the estimates from reported data. All data are analyzed for unusual values. Data from each operation are compared to their own past operating profile and to trends from similar operations. Data for missing operations were estimated based on similar operations or historical data. NASS field offices prepare these estimates by using a combination of survey indications and historic trends. Individual State estimates are reviewed by the Agricultural Statistics Board for reasonableness. Individual hatchery data are summed to State, regional, and United States totals. Only United States level estimates are published due to the limited number of hatcheries involved. The Net Poult Placement data include imported poults and exclude exported poults.

Cumulative net poult placements beginning on September 1 and ending on August 31 are shown in the monthly *Turkey Hatchery* report. This time period corresponds with the placements of poults which will reach maturity and be available for slaughter during the calendar year.

States reporting turkey hatcheries are: Arkansas, California, Florida, Indiana, Massachusetts, Michigan, Minnesota, Missouri, North Carolina, Ohio, Pennsylvania, Rhode Island, Texas, Virginia, West Virginia, and Wisconsin.

Revision Policy: Revisions are generally the result of late or corrected data. Revisions to the previous month are published in the monthly *Turkey Hatchery* report, while annual revisions are published in the *Hatchery Production - Annual Summary* report in April.

Reliability: Turkey hatchery estimates are based on a census of all known operating hatcheries and therefore, have no sampling error. However, estimates are subject to errors such as omission, duplication, and mistakes in reporting, recording, and processing the data. While these errors cannot be measured directly, they are minimized through strict quality controls in the data collection process and a careful review of all reported data for consistency and reasonableness.

To assist in evaluating the reliability of the estimates in this report, the “Root Mean Square Error” is shown for selected items in the following table. The “Root Mean Square Error” is a statistical measure based on past performance and is computed using the differences between first and final estimates. The “Root Mean Square Error” for turkey eggs in incubators on the first day of the month over the past 24 months is 1.7 percent. This means that chances are 2 out of 3 that the final estimate will not be above or below the current estimate of 27.5 million eggs by more than 1.7 percent. Chances are 9 out of 10 that the difference will not exceed 2.9 percent.

Reliability of October Turkey Hatchery Estimates

[Based on data for the past 24 months]

Item	Root mean square error	90 percent confidence level	Difference between first and latest estimate				
			Average	Smallest	Largest	Years	
						Below latest	Above latest
	(percent)	(percent)	(1,000)	(1,000)	(1,000)	(number)	(number)
Eggs in incubators	1.7	2.9	333	2	963	19	5
Poults hatched	0.4	0.7	66	0	289	13	7
Net poult placements	1.2	2.0	216	34	784	14	10

Information Contacts

Listed below are the commodity specialists in the Livestock Branch of the National Agricultural Statistics Service to contact for additional information. E-mail inquiries may be sent to nass@nass.usda.gov

Dan Kerestes, Chief, Livestock Branch	(202) 720-3570
Bruce Boess, Head, Poultry and Specialty Commodities Section	(202) 720-4447
Cody Brokmeyer – Poultry Slaughter, Turkey Hatchery, Turkeys Raised	(202) 690-3237
David Colwell – Cold Storage	(202) 720-8784
Kim Linonis – Layers, Eggs	(202) 690-8632
Miste Salmon – Broiler Hatchery, Catfish Processing, Catfish Production, Census of Aquaculture, Chicken Hatchery, Egg Products, Honey, Mink, Trout Production	(202) 720-3244

Access to NASS Reports

For your convenience, you may access NASS reports and products the following ways:

- All reports are available electronically, at no cost, on the NASS web site: <http://www.nass.usda.gov>
- Both national and state specific reports are available via a free e-mail subscription. To set-up this free subscription, visit <http://www.nass.usda.gov> and in the “Receive NASS Updates” box under “Receive reports by Email,” click on “National” or “State” to select the reports you would like to receive.
- Printed reports may be purchased from the National Technical Information Service (NTIS) by calling toll-free (800) 999-6779, or (703) 605-6220 if calling from outside the United States or Canada. Accepted methods of payment are Visa, MasterCard, check, or money order.

For more information on NASS surveys and reports, call the NASS Agricultural Statistics Hotline at (800) 727-9540, 7:30 a.m. to 4:00 p.m. ET, or e-mail: nass@nass.usda.gov.

The United States Department of Agriculture (USDA) prohibits discrimination in all its programs and activities on the basis of race, color, national origin, age, disability, and where applicable, sex, marital status, familial status, parental status, religion, sexual orientation, political beliefs, genetic information, reprisal, or because all or a part of an individual's income is derived from any public assistance program. (Not all prohibited bases apply to all programs.) Persons with disabilities who require alternative means for communication of program information (Braille, large print, audiotope, etc.) should contact USDA's TARGET Center at (202) 720-2600 (voice and TDD).

To file a complaint of discrimination, write to USDA, Assistant Secretary for Civil Rights, Office of the Assistant Secretary for Civil Rights, 1400 Independence Avenue, S.W., Stop 9410, Washington, DC 20250-9410, or call toll-free at (866) 632-9992 (English) or (800) 877-8339 (TDD) or (866) 377-8642 (English Federal-relay) or (800) 845-6136 (Spanish Federal-relay). USDA is an equal opportunity provider and employer.