



ISSN: 1949-1964

Released June 17, 2013, by the National Agricultural Statistics Service (NASS), Agricultural Statistics Board, United States Department of Agriculture (USDA).

Eggs in Incubators on June 1 Down 13 Percent from Last Year

Turkey eggs in incubators on June 1, 2013, in the United States totaled 26.4 million, down 13 percent from June 1, 2012. Eggs in incubators were up slightly from the May 1, 2013 total of 26.3 million eggs.

Poults Hatched During May Down 13 Percent from Last Year

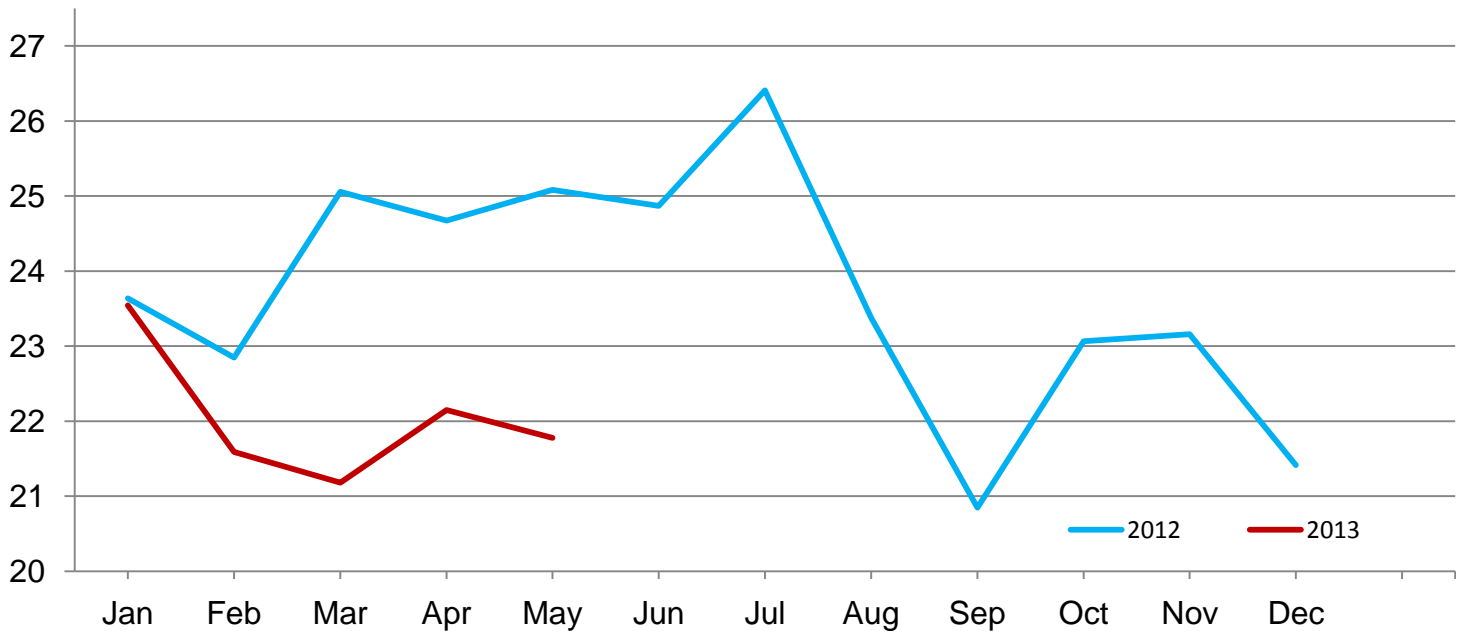
Turkey poults hatched during May 2013, in the United States totaled 22.1 million, down 13 percent from May 2012. Poults hatched were down 4 percent from the April 2013 total of 23.0 million poults.

Net Poults Placed During May Down 13 Percent from Last Year

The 21.8 million net poults placed during May 2013 in the United States were down 13 percent from the number placed during the same month a year earlier. Net placements were down 2 percent from the April 2013 total of 22.1 million.

Net Poults Placements – United States

Million poults



Eggs in Incubators and Poults Hatched by Month – United States: 2011-2013

[Blank data cells indicate estimation period has not yet begun]

Month	Eggs in incubators first of month		Percent of previous year	Poults hatched entire month		Percent of previous year
	2011-2012	2012-2013		2011-2012	2012-2013	
	(1,000 eggs)	(1,000 eggs)	(percent)	(1,000 poults)	(1,000 poults)	(percent)
September	28,072	26,366	94	23,157	21,429	93
October	27,170	27,015	99	22,423	23,292	104
November	27,502	27,622	100	22,734	23,677	104
December	28,741	26,700	93	24,698	22,020	89
January	28,308	27,887	99	24,463	24,106	99
February	28,104	27,923	99	23,185	22,212	96
March	29,041	26,318	91	25,234	21,698	86
April	28,231	27,501	97	24,291	23,000	95
May	29,648	26,346	89	25,483	22,069	87
June	30,385	26,350	87	25,021		
July	29,758			26,199		
August	28,891			23,814		

Net Poulst Placements by Month – United States: 2011-2013

[Includes imports and excludes exports. Blank data cells indicate estimation period has not yet begun]

Month	Total all breeds		Percent of previous year	Cumulative total		Percent of previous year
	2011-2012	2012-2013		2011-2012	2012-2013	
	(1,000 poults)	(1,000 poults)	(percent)	(1,000 poults)	(1,000 poults)	(percent)
September	22,320	20,848	93	22,320	20,848	93
October	21,407	23,067	108	43,727	43,915	100
November	22,090	23,159	105	65,817	67,074	102
December	23,779	21,417	90	89,596	88,491	99
January	23,636	23,542	100	113,232	112,033	99
February	22,849	21,589	94	136,081	133,622	98
March	25,055	21,182	85	161,136	154,804	96
April	24,675	22,147	90	185,811	176,951	95
May	25,082	21,776	87	210,893	198,727	94
June	24,868			235,761		
July	26,410			262,171		
August	23,378			285,549		

Statistical Methodology

Survey Procedures: Data for turkey hatchery estimates are collected from all known turkey hatcheries. Individual NASS field offices maintain a list of all known turkey hatcheries and use known sources of hatcheries to update their lists. Approximately 40 hatcheries are contacted each month. All known turkey hatcheries hatching 15,000 or more poults annually are mailed a questionnaire as close to the first of the month as possible. Adequate time is given to respond via mail, fax, or electronic data reporting (EDR). Those that do not respond are contacted by phone. Care is exercised to ensure that all hatcheries are accounted for in the estimate.

Estimating Procedures: Sound statistical methodology is employed to derive the estimates from reported data. All data are analyzed for unusual values. Data from each operation are compared to their own past operating profile and to trends from similar operations. Data for missing operations were estimated based on similar operations or historical data. NASS field offices prepare these estimates by using a combination of survey indications and historic trends. Individual State estimates are reviewed by the Agricultural Statistics Board for reasonableness. Individual hatchery data are summed to State, regional, and United States totals. Only United States level estimates are published due to the limited number of hatcheries involved. The Net Poult Placement data include imported poults and exclude exported poults.

Cumulative net poult placements beginning on September 1 and ending on August 31 are shown in the monthly *Turkey Hatchery* report. This time period corresponds with the placements of poults which will reach maturity and be available for slaughter during the calendar year.

States reporting turkey hatcheries are: Arkansas, California, Florida, Idaho, Indiana, Iowa, Massachusetts, Michigan, Minnesota, Missouri, North Carolina, Ohio, Pennsylvania, Texas, Virginia, West Virginia, and Wisconsin.

Revision Policy: Revisions are generally the result of late or corrected data. Revisions to the previous month are published in the monthly *Turkey Hatchery* report, while annual revisions are published in the *Hatchery Production - Annual Summary* report in April.

Reliability: Turkey hatchery estimates are based on a census of all known operating hatcheries and therefore, have no sampling error. However, estimates are subject to errors such as omission, duplication, and mistakes in reporting, recording, and processing the data. While these errors cannot be measured directly, they are minimized through strict quality controls in the data collection process and a careful review of all reported data for consistency and reasonableness.

To assist in evaluating the reliability of the estimates in this report, the “Root Mean Square Error” is shown for selected items in the following table. The “Root Mean Square Error” is a statistical measure based on past performance and is computed using the differences between first and final estimates. The “Root Mean Square Error” for turkey eggs in incubators on the first day of the month over the past 24 months is 2.0 percent. This means that chances are 2 out of 3 that the final estimate will not be above or below the current estimate of 26.4 million eggs by more than 2.0 percent. Chances are 9 out of 10 that the difference will not exceed 3.4 percent.

Reliability of June Turkey Hatchery Estimates

[Based on data for the past 24 months]

Item	Root mean square error	90 percent confidence level	Difference between first and latest estimate				
			Average	Smallest	Largest	Months	
						Below latest	Above latest
	(percent)	(percent)	(1,000)	(1,000)	(1,000)	(number)	(number)
Eggs in incubators	2.0	3.4	408	2	1,861	13	11
Poults hatched	1.0	1.7	128	0	672	14	8
Net poult placements	2.0	3.4	342	7	1,195	17	7

Information Contacts

Listed below are the commodity specialists in the Livestock Branch of the National Agricultural Statistics Service to contact for additional information. E-mail inquiries may be sent to nass@nass.usda.gov

Dan Kerestes, Chief, Livestock Branch	(202) 720-3570
Bruce Boess, Head, Poultry and Specialty Commodities Section	(202) 720-4447
Cody Brokmeyer – Poultry Slaughter, Turkey Hatchery, Turkeys Raised	(202) 690-3237
David Colwell – Cold Storage	(202) 720-8784
LaKeya Jones – Census of Aquaculture, Honey	(202) 720-0585
Dawn Keen – Egg Products	(202) 720-4448
Kim Linonis – Layers, Eggs	(202) 690-8632
Miste Salmon – Broiler Hatchery, Chicken Hatchery	(202) 720-3244

Access to NASS Reports

For your convenience, you may access NASS reports and products the following ways:

- All reports are available electronically, at no cost, on the NASS web site: <http://www.nass.usda.gov>
- Both national and state specific reports are available via a free e-mail subscription. To set-up this free subscription, visit <http://www.nass.usda.gov> and in the “Follow NASS” box under “Receive reports by Email,” click on “National” or “State” to select the reports you would like to receive.

For more information on NASS surveys and reports, call the NASS Agricultural Statistics Hotline at (800) 727-9540, 7:30 a.m. to 4:00 p.m. ET, or e-mail: nass@nass.usda.gov.

The United States Department of Agriculture (USDA) prohibits discrimination in all its programs and activities on the basis of race, color, national origin, age, disability, and where applicable, sex, marital status, familial status, parental status, religion, sexual orientation, political beliefs, genetic information, reprisal, or because all or a part of an individual's income is derived from any public assistance program. (Not all prohibited bases apply to all programs.) Persons with disabilities who require alternative means for communication of program information (Braille, large print, audiotape, etc.) should contact USDA's TARGET Center at (202) 720-2600 (voice and TDD).

To file a complaint of discrimination, write to USDA, Assistant Secretary for Civil Rights, Office of the Assistant Secretary for Civil Rights, 1400 Independence Avenue, S.W., Stop 9410, Washington, DC 20250-9410, or call toll-free at (866) 632-9992 (English) or (800) 877-8339 (TDD) or (866) 377-8642 (English Federal-relay) or (800) 845-6136 (Spanish Federal-relay). USDA is an equal opportunity provider and employer.