



ISSN: 1949-1964

Released September 16, 2014, by the National Agricultural Statistics Service (NASS), Agricultural Statistics Board, United States Department of Agriculture (USDA).

## Eggs in Incubators on September 1 Up 6 Percent from Last Year

Turkey eggs in incubators on September 1, 2014, in the United States totaled 27.1 million, up 6 percent from September 1, 2013. Eggs in incubators were down 3 percent from the August 1, 2014 total of 27.9 million eggs.

## Poults Hatched During August Up 3 Percent from Last Year

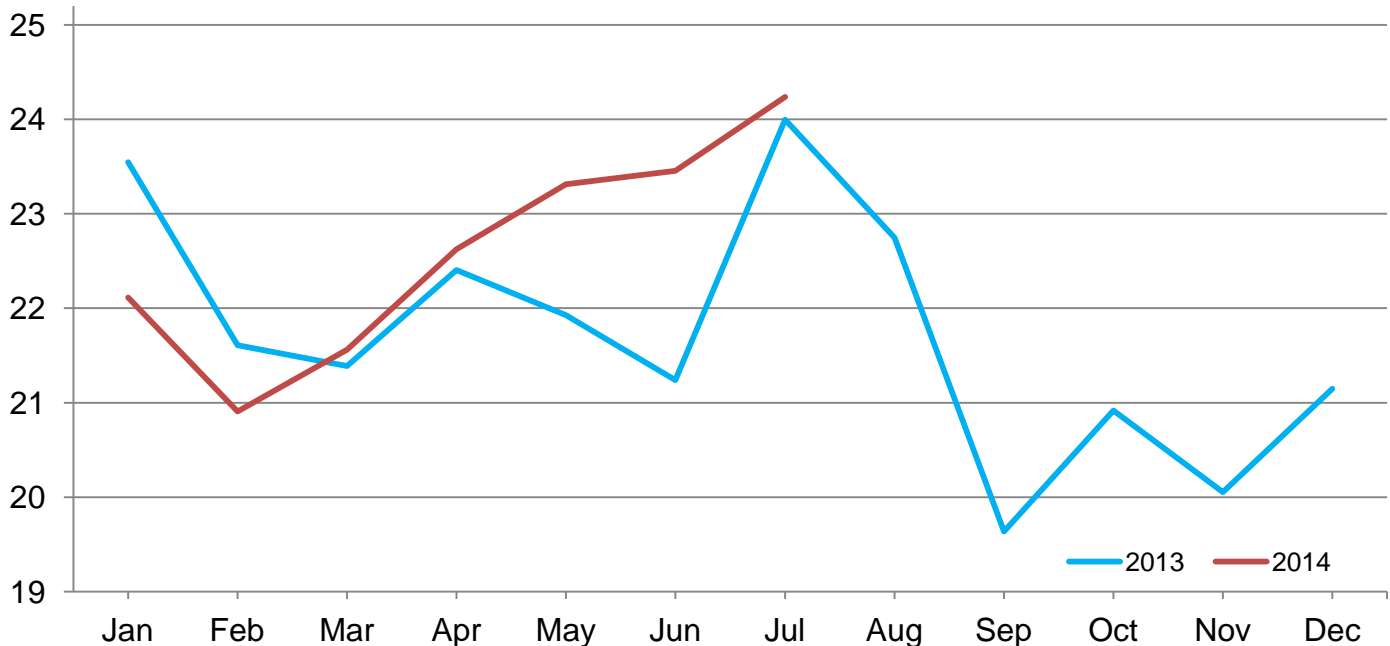
Turkey poults hatched during August 2014, in the United States totaled 23.6 million, up 3 percent from August 2013. Poults hatched were down 3 percent from the July 2014 total of 24.4 million poults.

## Net Poults Placed During August Up 2 Percent from Last Year

The 23.2 million net poults placed during August 2014 in the United States were up 2 percent from the number placed during the same month a year earlier. Net placements were down 4 percent from the July 2014 total of 24.2 million.

## Net Poult Placements – United States

Million poults



## Eggs in Incubators and Poults Hatched by Month – United States: 2012-2014

[Blank data cells indicate estimation period has not yet begun]

Month	Eggs in incubators first of month		Percent of previous year	Poults hatched entire month		Percent of previous year
	2013-2014	2014-2015		2013-2014	2014-2015	
	(1,000 eggs)	(1,000 eggs)	(percent)	(1,000 poults)	(1,000 poults)	(percent)
September .....	25,538	27,065	106	21,260	20,985	99
October .....	26,480			23,083	22,939	99
November .....	26,393			23,220	21,319	92
December .....	26,492			21,953	22,085	101
January .....	27,299			24,102	23,447	97
February .....	26,934			22,232	21,506	97
March .....	26,038			21,905	22,388	102
April .....	27,202			23,259	22,808	98
May .....	29,022			22,339	24,194	108
June .....	28,924			21,412	23,651	110
July .....	28,584			23,885	24,413	102
August .....	27,923			23,014	23,598	103

## Net Poultry Placements by Month – United States: 2012-2014

[Includes imports and excludes exports]

Month	Total all breeds		Percent of previous year	Cumulative total		Percent of previous year
	2013-2014	2014-2015		2013-2014	2014-2015	
	(1,000 poults)	(1,000 poults)	(percent)	(1,000 poults)	(1,000 poults)	(percent)
September .....	20,680	19,637	95	20,680	19,637	95
October .....	22,858	20,916	92	43,538	40,553	93
November .....	22,703	20,053	88	66,241	60,606	91
December .....	21,356	21,149	99	87,597	81,755	93
January .....	23,545	22,113	94	111,142	103,868	93
February .....	21,608	20,906	97	132,750	124,774	94
March .....	21,388	21,562	101	154,138	146,336	95
April .....	22,406	22,626	101	176,544	168,962	96
May .....	21,928	23,313	106	198,472	192,275	97
June .....	21,241	23,453	110	219,713	215,728	98
July .....	23,995	24,238	101	243,708	239,966	98
August .....	22,748	23,213	102	266,456	263,179	99

## Statistical Methodology

**Survey Procedures:** Data for turkey hatchery estimates are collected from all known turkey hatcheries. Individual NASS field offices maintain a list of all known turkey hatcheries and use known sources of hatcheries to update their lists. Approximately 40 hatcheries are contacted each month. All known turkey hatcheries hatching 15,000 or more poults annually are mailed a questionnaire as close to the first of the month as possible. Adequate time is given to respond via mail, fax, or electronic data reporting (EDR). Those that do not respond are contacted by phone. Care is exercised to ensure that all hatcheries are accounted for in the estimate.

**Estimating Procedures:** Sound statistical methodology is employed to derive the estimates from reported data. All data are analyzed for unusual values. Data from each operation are compared to their own past operating profile and to trends from similar operations. Data for missing operations were estimated based on similar operations or historical data. NASS field offices prepare these estimates by using a combination of survey indications and historic trends. Individual State estimates are reviewed by the Agricultural Statistics Board for reasonableness. Individual hatchery data are summed to State, regional, and United States totals. Only United States level estimates are published due to the limited number of hatcheries involved. The Net Poult Placement data include imported poults and exclude exported poults.

Cumulative net poult placements beginning on September 1 and ending on August 31 are shown in the monthly *Turkey Hatchery* report. This time period corresponds with the placements of poults which will reach maturity and be available for slaughter during the calendar year.

States reporting turkey hatcheries are: Arkansas, California, Florida, Idaho, Indiana, Iowa, Massachusetts, Michigan, Minnesota, Missouri, North Carolina, New Mexico, Ohio, Pennsylvania, Texas, Virginia, West Virginia, and Wisconsin.

**Revision Policy:** Revisions are generally the result of late or corrected data. Revisions to the previous month are published in the monthly *Turkey Hatchery* report, while annual revisions are published in the *Hatchery Production - Annual Summary* report in April.

**Reliability:** Turkey hatchery estimates are based on a census of all known operating hatcheries and therefore, have no sampling error. However, estimates are subject to errors such as omission, duplication, and mistakes in reporting, recording, and processing the data. While these errors cannot be measured directly, they are minimized through strict quality controls in the data collection process and a careful review of all reported data for consistency and reasonableness.

To assist in evaluating the reliability of the estimates in this report, the “Root Mean Square Error” is shown for selected items in the following table. The “Root Mean Square Error” is a statistical measure based on past performance and is computed using the differences between first and final estimates. The “Root Mean Square Error” for turkey eggs in incubators on the first day of the month over the past 24 months is 1.2 percent. This means that chances are 2 out of 3 that the final estimate will not be above or below the current estimate of 27.1 million eggs by more than 1.2 percent. Chances are 9 out of 10 that the difference will not exceed 2.1 percent.

### Reliability of September Turkey Hatchery Estimates

[Based on data for the past 24 months]

Item	Root mean square error	90 percent confidence level	Difference between first and latest estimate				
			Average	Smallest	Largest	Months	
						Below latest	Above latest
	(percent)	(percent)	(1,000)	(1,000)	(1,000)	(number)	(number)
Eggs in incubators .....	1.2	2.1	253	12	805	18	6
Poults hatched .....	0.9	1.5	157	0	463	15	7
Net poult placements .....	1.6	2.7	303	10	679	14	10

## Information Contacts

Listed below are the commodity specialists in the Livestock Branch of the National Agricultural Statistics Service to contact for additional information. E-mail inquiries may be sent to [nass@nass.usda.gov](mailto:nass@nass.usda.gov)

Dan Kerestes, Chief, Livestock Branch .....	(202) 720-3570
Bruce Boess, Head, Poultry and Specialty Commodities Section .....	(202) 720-4447
Alissa Cowell-Mytar – Cold Storage.....	(202) 720-4751
Heidi Gleich – Broiler Hatchery, Chicken Hatchery .....	(202) 720-0585
Michael Klamm – Poultry Slaughter, Turkey Hatchery, Turkeys Raised .....	(202) 690-3237
Tom Kruchten – Census of Aquaculture, Mink, Trout Production .....	(202) 690-4870
Kim Linonis – Layers, Eggs .....	(202) 690-8632
Joshua O’Rear – Catfish Production, Honey .....	(202) 690-3676
Vacant – Egg Products .....	(202) 720-3570

## Access to NASS Reports

For your convenience, you may access NASS reports and products the following ways:

- All reports are available electronically, at no cost, on the NASS web site: <http://www.nass.usda.gov>
- Both national and state specific reports are available via a free e-mail subscription. To set-up this free subscription, visit <http://www.nass.usda.gov> and in the “Follow NASS” box under “Receive reports by Email,” click on “National” or “State” to select the reports you would like to receive.

For more information on NASS surveys and reports, call the NASS Agricultural Statistics Hotline at (800) 727-9540, 7:30 a.m. to 4:00 p.m. ET, or e-mail: [nass@nass.usda.gov](mailto:nass@nass.usda.gov).

The U.S. Department of Agriculture (USDA) prohibits discrimination against its customers, employees, and applicants for employment on the basis of race, color, national origin, age, disability, sex, gender identity, religion, reprisal, and where applicable, political beliefs, marital status, familial or parental status, sexual orientation, or all or part of an individual's income is derived from any public assistance program, or protected genetic information in employment or in any program or activity conducted or funded by the Department. (Not all prohibited bases will apply to all programs and/or employment activities.)

If you wish to file a Civil Rights program complaint of discrimination, complete the [USDA Program Discrimination Complaint Form](#) (PDF), found online at [http://www.ascr.usda.gov/complaint\\_filing\\_cust.html](http://www.ascr.usda.gov/complaint_filing_cust.html), or at any USDA office, or call (866) 632-9992 to request the form. You may also write a letter containing all of the information requested in the form. Send your completed complaint form or letter to us by mail at U.S. Department of Agriculture, Director, Office of Adjudication, 1400 Independence Avenue, S.W., Washington, D.C. 20250-9410, by fax (202) 690-7442 or email at [program.intake@usda.gov](mailto:program.intake@usda.gov).