



Released December 16, 2014, by the National Agricultural Statistics Service (NASS), Agricultural Statistics Board, United States Department of Agriculture (USDA).

Eggs in Incubators on December 1 Up 5 Percent from Last Year

Turkey eggs in incubators on December 1, 2014, in the United States totaled 27.7 million, up 5 percent from December 1, 2013. Eggs in incubators were down 1 percent from the November 1, 2014 total of 28.2 million eggs.

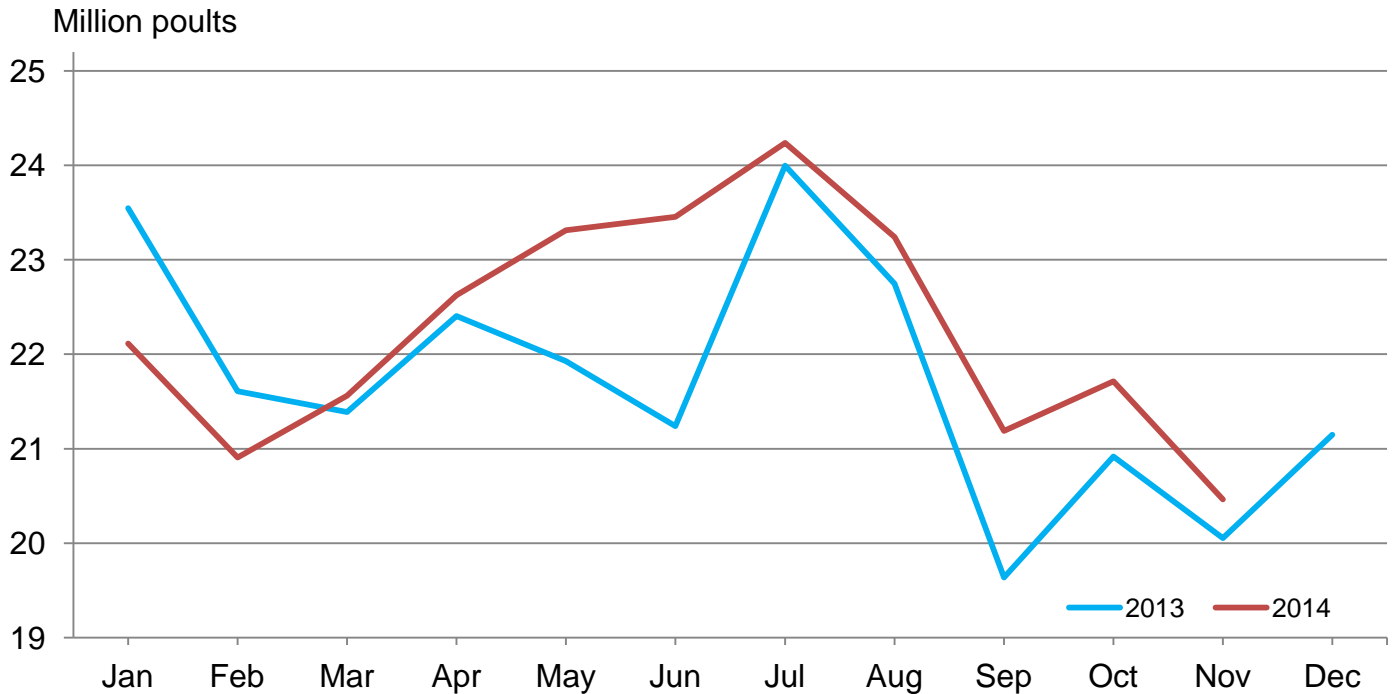
Poults Hatched During November Up 3 Percent from Last Year

Turkey poults hatched during November 2014, in the United States totaled 22.0 million, up 3 percent from November 2013. Poults hatched were down 7 percent from the October 2014 total of 23.8 million poults.

Net Poults Placed During November Up 2 Percent from Last Year

The 20.5 million net poults placed during November 2014 in the United States were up 2 percent from the number placed during the same month a year earlier. Net placements were down 6 percent from the October 2014 total of 21.7 million.

Net Poult Placements – United States



Eggs in Incubators and Poults Hatched by Month – United States: 2013-2015

[Blank data cells indicate estimation period has not yet begun]

Month	Eggs in incubators first of month		Percent of previous year	Poults hatched entire month		Percent of previous year
	2013-2014	2014-2015		2013-2014	2014-2015	
	(1,000 eggs)	(1,000 eggs)	(percent)	(1,000 poults)	(1,000 poults)	(percent)
September	25,538	27,299	107	20,985	22,866	109
October	26,480	27,733	105	22,939	23,764	104
November	26,393	28,162	107	21,319	22,015	103
December	26,492	27,743	105	22,085		
January	27,299			23,447		
February	26,934			21,506		
March	26,038			22,388		
April	27,202			22,808		
May	29,022			24,194		
June	28,924			23,651		
July	28,584			24,413		
August	27,923			23,518		

Net Poultry Placements by Month – United States: 2013-2015

[Includes imports and excludes exports. Blank data cells indicate estimation period has not yet begun]

Month	Total all breeds		Percent of previous year	Cumulative total		Percent of previous year
	2013-2014	2014-2015		2013-2014	2014-2015	
	(1,000 poults)	(1,000 poults)	(percent)	(1,000 poults)	(1,000 poults)	(percent)
September	19,637	21,188	108	19,637	21,188	108
October	20,916	21,712	104	40,553	42,900	106
November	20,053	20,465	102	60,606	63,365	105
December	21,149			81,755		
January	22,113			103,868		
February	20,906			124,774		
March	21,562			146,336		
April	22,626			168,962		
May	23,313			192,275		
June	23,453			215,728		
July	24,238			239,966		
August	23,240			263,206		

Statistical Methodology

Survey Procedures: Data for turkey hatchery estimates are collected from all known turkey hatcheries. Individual NASS field offices maintain a list of all known turkey hatcheries and use known sources of hatcheries to update their lists. Approximately 40 hatcheries are contacted each month. All known turkey hatcheries hatching 15,000 or more poults annually are mailed a questionnaire as close to the first of the month as possible. Adequate time is given to respond via mail, fax, or electronic data reporting (EDR). Those that do not respond are contacted by phone. Care is exercised to ensure that all hatcheries are accounted for in the estimate.

Estimating Procedures: Sound statistical methodology is employed to derive the estimates from reported data. All data are analyzed for unusual values. Data from each operation are compared to their own past operating profile and to trends from similar operations. Data for missing operations were estimated based on similar operations or historical data. NASS field offices prepare these estimates by using a combination of survey indications and historic trends. Individual State estimates are reviewed by the Agricultural Statistics Board for reasonableness. Individual hatchery data are summed to State, regional, and United States totals. Only United States level estimates are published due to the limited number of hatcheries involved. The Net Poult Placement data include imported poults and exclude exported poults.

Cumulative net poult placements beginning on September 1 and ending on August 31 are shown in the monthly *Turkey Hatchery* report. This time period corresponds with the placements of poults which will reach maturity and be available for slaughter during the calendar year.

States reporting turkey hatcheries are: Arkansas, California, Florida, Idaho, Indiana, Iowa, Massachusetts, Michigan, Minnesota, Missouri, North Carolina, New Mexico, Ohio, Pennsylvania, Texas, Virginia, West Virginia, and Wisconsin.

Revision Policy: Revisions are generally the result of late or corrected data. Revisions to the previous month are published in the monthly *Turkey Hatchery* report, while annual revisions are published in the *Hatchery Production - Annual Summary* report in April.

Reliability: Turkey hatchery estimates are based on a census of all known operating hatcheries and therefore, have no sampling error. However, estimates are subject to errors such as omission, duplication, and mistakes in reporting, recording, and processing the data. While the affects of these errors cannot be measured directly, they are minimized through strict quality controls in the data collection process and through a careful review of all reported data for consistency and reasonableness.

To assist in evaluating the reliability of the estimates in this report, the “Root Mean Square Error” is shown for selected items in the following table. The “Root Mean Square Error” is a statistical measure based on past performance and is computed using the differences between first and final estimates. The “Root Mean Square Error” for turkey eggs in incubators on the first day of the month over the past 24 months is 1.2 percent. This means that chances are 2 out of 3 that the final estimate will not be above or below the current estimate of 27.7 million eggs by more than 1.2 percent. Chances are 9 out of 10 that the difference will not exceed 2.0 percent.

Reliability of December Turkey Hatchery Estimates

[Based on data for the past 24 months]

Item	Root mean square error	90 percent confidence level	Difference between first and latest estimate				
			Average	Smallest	Largest	Months	
						Below latest	Above latest
	(percent)	(percent)	(1,000)	(1,000)	(1,000)	(number)	(number)
Eggs in incubators	1.2	2.0	234	0	805	19	4
Poults hatched	0.8	1.4	140	0	463	15	6
Net poult placements	1.5	2.5	286	10	631	14	10

Information Contacts

Listed below are the commodity specialists in the Livestock Branch of the National Agricultural Statistics Service to contact for additional information. E-mail inquiries may be sent to nass@nass.usda.gov

Dan Kerestes, Chief, Livestock Branch	(202) 720-3570
Bruce Boess, Head, Poultry and Specialty Commodities Section	(202) 720-4447
Alissa Cowell-Mytar – Cold Storage	(202) 720-4751
Heidi Gleich – Broiler Hatchery, Chicken Hatchery	(202) 720-0585
Michael Klamm – Poultry Slaughter, Turkey Hatchery, Turkeys Raised	(202) 690-3237
Tom Kruchten – Census of Aquaculture	(202) 690-4870
Kim Linonis – Layers, Eggs	(202) 690-8632
Joshua O’Rear – Honey	(202) 690-3676
Vacant – Catfish Production, Egg Products, Mink, Trout Production	(202) 720-3570

Access to NASS Reports

For your convenience, you may access NASS reports and products the following ways:

- All reports are available electronically, at no cost, on the NASS web site: <http://www.nass.usda.gov>
- Both national and state specific reports are available via a free e-mail subscription. To set-up this free subscription, visit <http://www.nass.usda.gov> and in the “Follow NASS” box under “Receive reports by Email,” click on “National” or “State” to select the reports you would like to receive.

For more information on NASS surveys and reports, call the NASS Agricultural Statistics Hotline at (800) 727-9540, 7:30 a.m. to 4:00 p.m. ET, or e-mail: nass@nass.usda.gov.

The U.S. Department of Agriculture (USDA) prohibits discrimination against its customers, employees, and applicants for employment on the basis of race, color, national origin, age, disability, sex, gender identity, religion, reprisal, and where applicable, political beliefs, marital status, familial or parental status, sexual orientation, or all or part of an individual's income is derived from any public assistance program, or protected genetic information in employment or in any program or activity conducted or funded by the Department. (Not all prohibited bases will apply to all programs and/or employment activities.)

If you wish to file a Civil Rights program complaint of discrimination, complete the [USDA Program Discrimination Complaint Form](#) (PDF), found online at http://www.ascr.usda.gov/complaint_filing_cust.html, or at any USDA office, or call (866) 632-9992 to request the form. You may also write a letter containing all of the information requested in the form. Send your completed complaint form or letter to us by mail at U.S. Department of Agriculture, Director, Office of Adjudication, 1400 Independence Avenue, S.W., Washington, D.C. 20250-9410, by fax (202) 690-7442 or email at program.intake@usda.gov.