



ISSN: 1949-1964

Released September 15, 2015, by the National Agricultural Statistics Service (NASS), Agricultural Statistics Board, United States Department of Agriculture (USDA).

## Eggs in Incubators on September 1 Down 15 Percent from Last Year

Turkey eggs in incubators on September 1, 2015, in the United States totaled 23.2 million, down 15 percent from September 1, 2014. Eggs in incubators were down 14 percent from the August 1, 2015 total of 27.0 million eggs.

## Poults Hatched During August Down 6 Percent from Last Year

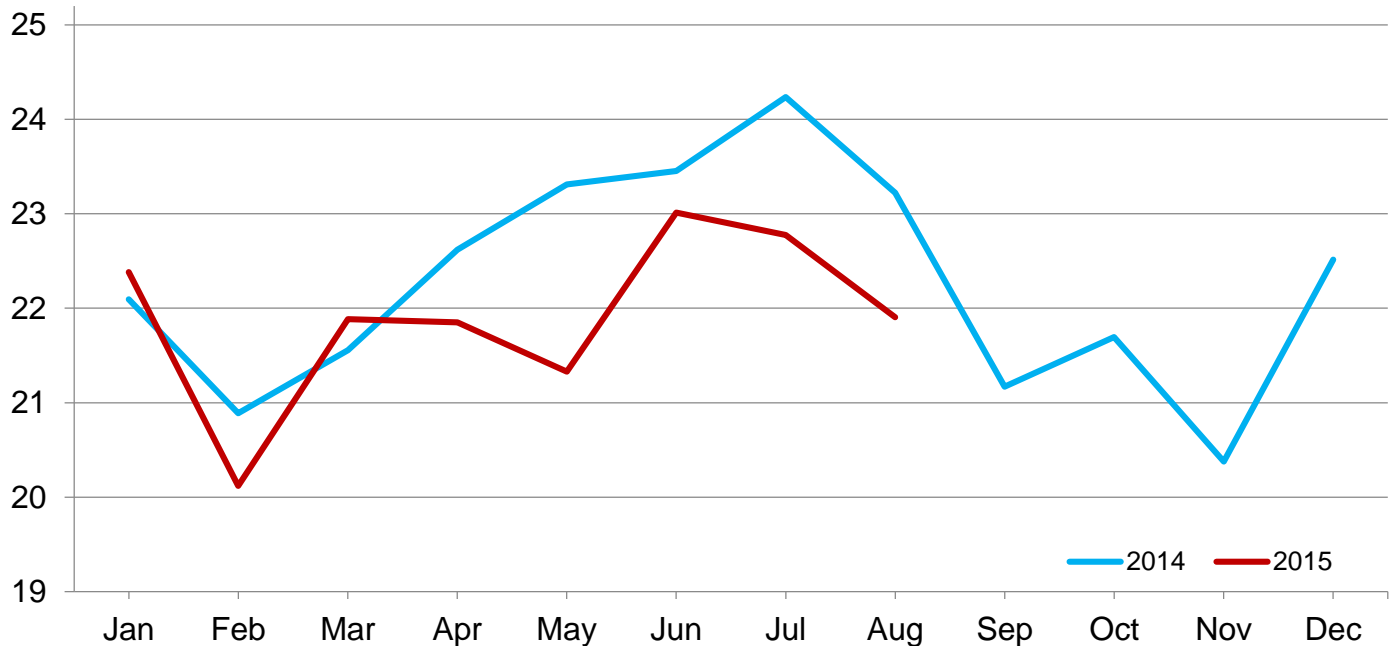
Turkey poults hatched during August 2015, in the United States totaled 22.2 million, down 6 percent from August 2014. Poults hatched were down 3 percent from the July 2015 total of 23.0 million poults.

## Net Poults Placed During August Down 6 Percent from Last Year

The 21.9 million net poults placed during August 2015 in the United States were down 6 percent from the number placed during the same month a year earlier. Net placements were down 4 percent from the July 2015 total of 22.8 million.

## Net Poult Placements – United States

Million poults



## Eggs in Incubators and Poults Hatched by Month – United States: 2013-2016

[Blank data cells indicate estimation period has not yet begun]

Month	Eggs in incubators first of month		Percent of previous year	Poults hatched entire month		Percent of previous year
	2014-2015	2015-2016		2013-2014	2014-2015	
	(1,000 eggs)	(1,000 eggs)	(percent)	(1,000 poults)	(1,000 poults)	(percent)
September .....	27,388	23,212	85	20,974	22,844	109
October .....	27,842			22,928	23,744	104
November .....	28,004			21,308	21,936	103
December .....	28,964			22,074	24,660	112
January .....	29,281			23,430	24,023	103
February .....	27,144			21,486	21,721	101
March .....	28,250			22,380	24,179	108
April .....	28,799			22,800	23,261	102
May .....	26,845			24,189	22,161	92
June .....	27,232			23,647	23,129	98
July .....	27,357			24,405	22,966	94
August .....	27,046			23,500	22,165	94

## Net Poultry Placements by Month – United States: 2013-2015

[Includes imports and excludes exports]

Month	Total all breeds		Percent of previous year	Cumulative total		Percent of previous year
	2013-2014	2014-2015		2013-2014	2014-2015	
	(1,000 poults)	(1,000 poults)	(percent)	(1,000 poults)	(1,000 poults)	(percent)
September .....	19,624	21,169	108	19,624	21,169	108
October .....	20,908	21,695	104	40,532	42,864	106
November .....	20,042	20,379	102	60,574	63,243	104
December .....	21,138	22,516	107	81,712	85,759	105
January .....	22,096	22,383	101	103,808	108,142	104
February .....	20,889	20,119	96	124,697	128,261	103
March .....	21,557	21,885	102	146,254	150,146	103
April .....	22,621	21,851	97	168,875	171,997	102
May .....	23,310	21,329	92	192,185	193,326	101
June .....	23,452	23,014	98	215,637	216,340	100
July .....	24,234	22,776	94	239,871	239,116	100
August .....	23,224	21,904	94	263,095	261,020	99

## Statistical Methodology

**Survey Procedures:** Data for turkey hatchery estimates are collected from all known turkey hatcheries. Individual NASS field offices maintain a list of all known turkey hatcheries and use known sources of hatcheries to update their lists. Approximately 40 hatcheries are contacted each month. All known turkey hatcheries hatching 15,000 or more poults annually are mailed a questionnaire as close to the first of the month as possible. Adequate time is given to respond via mail, fax, or electronic data reporting (EDR). Those that do not respond are contacted by phone. Care is exercised to ensure that all hatcheries are accounted for in the estimate.

**Estimating Procedures:** Sound statistical methodology is employed to derive the estimates from reported data. All data are analyzed for unusual values. Data from each operation are compared to their own past operating profile and to trends from similar operations. Data for missing operations were estimated based on similar operations or historical data. NASS field offices prepare these estimates by using a combination of survey indications and historic trends. Individual State estimates are reviewed by the Agricultural Statistics Board for reasonableness. Individual hatchery data are summed to State, regional, and United States totals. Only United States level estimates are published due to the limited number of hatcheries involved. The Net Poult Placement data include imported poults and exclude exported poults.

Cumulative net poult placements beginning on September 1 and ending on August 31 are shown in the monthly *Turkey Hatchery* report. This time period corresponds with the placements of poults which will reach maturity and be available for slaughter during the calendar year.

States reporting turkey hatcheries are: Arkansas, California, Florida, Idaho, Indiana, Iowa, Massachusetts, Michigan, Minnesota, Missouri, North Carolina, New Mexico, Ohio, Pennsylvania, Texas, Virginia, West Virginia, and Wisconsin.

**Revision Policy:** Revisions are generally the result of late or corrected data. Revisions to the previous month are published in the monthly *Turkey Hatchery* report, while annual revisions are published in the *Hatchery Production - Annual Summary* report in April.

**Reliability:** Turkey hatchery estimates are based on a census of all known operating hatcheries and therefore, have no sampling error. However, estimates are subject to errors such as omission, duplication, and mistakes in reporting, recording, and processing the data. While the affects of these errors cannot be measured directly, they are minimized through strict quality controls in the data collection process and through a careful review of all reported data for consistency and reasonableness.

To assist in evaluating the reliability of the estimates in this report, the “Root Mean Square Error” is shown for selected items in the following table. The “Root Mean Square Error” is a statistical measure based on past performance and is computed using the differences between first and final estimates. The “Root Mean Square Error” for turkey eggs in incubators on the first day of the month over the past 24 months is 1.2 percent. This means that chances are 2 out of 3 that the final estimate will not be above or below the current estimate of 23.2 million eggs by more than 1.2 percent. Chances are 9 out of 10 that the difference will not exceed 2.1 percent.

### Reliability of September Turkey Hatchery Estimates

[Based on data for the past 24 months]

Item	Root mean square error	90 percent confidence level	Difference between first and latest estimate				
			Average	Smallest	Largest	Months	
						Below latest	Above latest
	(percent)	(percent)	(1,000)	(1,000)	(1,000)	(number)	(number)
Eggs in incubators .....	1.2	2.1	206	5	1,221	18	6
Poults hatched .....	0.5	0.8	85	0	211	11	12
Net poult placements .....	1.5	2.6	276	11	659	9	15

## Information Contacts

Listed below are the commodity specialists in the Livestock Branch of the National Agricultural Statistics Service to contact for additional information. E-mail inquiries may be sent to [nass@nass.usda.gov](mailto:nass@nass.usda.gov)

Dan Kerestes, Chief, Livestock Branch .....	(202) 720-3570
Bruce Boess, Head, Poultry and Specialty Commodities Section .....	(202) 720-4447
Alissa Cowell-Mytar – Cold Storage .....	(202) 720-4751
Heidi Gleich – Broiler Hatchery, Chicken Hatchery .....	(202) 720-0585
Michael Klamm – Poultry Slaughter .....	(202) 720-3040
Tom Kruchten – Census of Aquaculture .....	(202) 690-4870
Kim Linonis – Layers, Eggs .....	(202) 690-8632
Sammy Neal – Catfish Production, Egg Products, Mink, Trout Production, Turkey Hatchery, Turkeys Raised .....	(202) 720-3244
Joshua O’Rear – Honey .....	(202) 690-3676

## Access to NASS Reports

For your convenience, you may access NASS reports and products the following ways:

- All reports are available electronically, at no cost, on the NASS web site: <http://www.nass.usda.gov>
- Both national and state specific reports are available via a free e-mail subscription. To set-up this free subscription, visit <http://www.nass.usda.gov> and in the “Follow NASS” box under “Receive reports by Email,” click on “National” or “State” to select the reports you would like to receive.

For more information on NASS surveys and reports, call the NASS Agricultural Statistics Hotline at (800) 727-9540, 7:30 a.m. to 4:00 p.m. ET, or e-mail: [nass@nass.usda.gov](mailto:nass@nass.usda.gov).

The U.S. Department of Agriculture (USDA) prohibits discrimination against its customers, employees, and applicants for employment on the basis of race, color, national origin, age, disability, sex, gender identity, religion, reprisal, and where applicable, political beliefs, marital status, familial or parental status, sexual orientation, or all or part of an individual's income is derived from any public assistance program, or protected genetic information in employment or in any program or activity conducted or funded by the Department. (Not all prohibited bases will apply to all programs and/or employment activities.)

If you wish to file a Civil Rights program complaint of discrimination, complete the [USDA Program Discrimination Complaint Form](#) (PDF), found online at [http://www.ascr.usda.gov/complaint\\_filing\\_cust.html](http://www.ascr.usda.gov/complaint_filing_cust.html), or at any USDA office, or call (866) 632-9992 to request the form. You may also write a letter containing all of the information requested in the form. Send your completed complaint form or letter to us by mail at U.S. Department of Agriculture, Director, Office of Adjudication, 1400 Independence Avenue, S.W., Washington, D.C. 20250-9410, by fax (202) 690-7442 or email at [program.intake@usda.gov](mailto:program.intake@usda.gov).