



ISSN: 1949-1964

Released September 15, 2016, by the National Agricultural Statistics Service (NASS), Agricultural Statistics Board, United States Department of Agriculture (USDA).

Eggs in Incubators on September 1 Up 21 Percent from Last Year

Turkey eggs in incubators on September 1, 2016, in the United States totaled 28.8 million, up 21 percent from September 1, 2015. Eggs in incubators were down 1 percent from the August 1, 2016 total of 29.0 million eggs.

Poults Hatched During August Up 11 Percent from Last Year

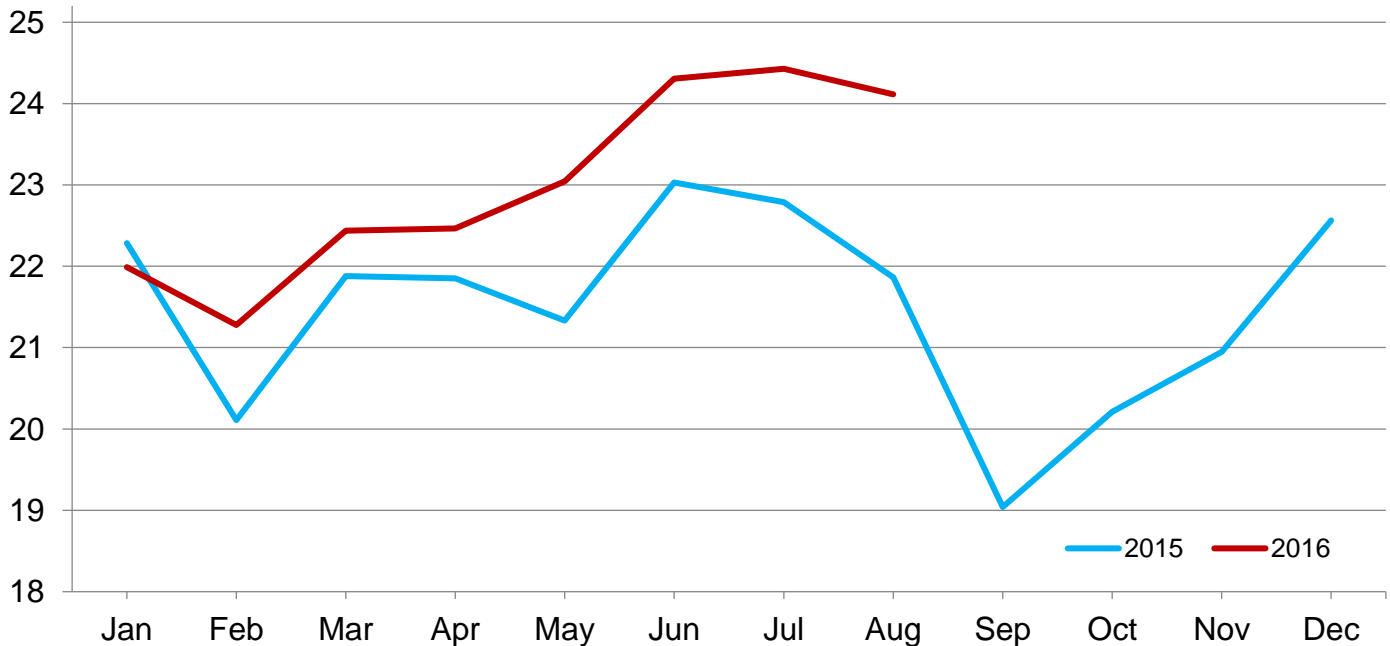
Turkey poults hatched during August 2016, in the United States totaled 24.5 million, up 11 percent from August 2015. Poults hatched were down 1 percent from the July 2016 total of 24.8 million poults.

Net Poults Placed During August Up 10 Percent from Last Year

The 24.1 million net poults placed during August 2016 in the United States were up 10 percent from the number placed during the same month a year earlier. Net placements were down 1 percent from the July 2016 total of 24.4 million.

Net Poult Placements – United States

Million poults



Eggs in Incubators and Poults Hatched by Month – United States: 2014-2017

[Blank data cells indicate estimation period has not yet begun]

Month	Eggs in incubators first of month		Percent of previous year	Poults hatched entire month		Percent of previous year
	2015-2016	2016-2017		2014-2015	2015-2016	
	(1,000 eggs)	(1,000 eggs)	(percent)	(1,000 poults)	(1,000 poults)	(percent)
September	23,793	28,805	121	22,855	19,528	85
October	24,211			23,744	20,621	87
November	25,125			21,936	20,996	96
December	25,727			24,660	22,642	92
January	27,473			23,921	22,783	95
February	27,057			21,712	22,016	101
March	27,628			24,178	23,496	97
April	29,443			23,263	23,765	102
May	28,149			22,164	23,513	106
June	30,047			23,148	25,021	108
July	29,899			22,976	24,757	108
August	29,043			22,006	24,464	111

Net Poultry Placements by Month – United States: 2014-2016

[Includes imports and excludes exports.]

Month	Total all breeds		Percent of previous year	Cumulative total		Percent of previous year
	2014-2015	2015-2016		2014-2015	2015-2016	
	(1,000 poults)	(1,000 poults)	(percent)	(1,000 poults)	(1,000 poults)	(percent)
September	21,180	19,041	90	21,180	19,041	90
October	21,695	20,213	93	42,875	39,254	92
November	20,379	20,946	103	63,254	60,200	95
December	22,516	22,562	100	85,770	82,762	96
January	22,283	21,991	99	108,053	104,753	97
February	20,110	21,278	106	128,163	126,031	98
March	21,880	22,436	103	150,043	148,467	99
April	21,852	22,465	103	171,895	170,932	99
May	21,331	23,042	108	193,226	193,974	100
June	23,030	24,306	106	216,256	218,280	101
July	22,788	24,428	107	239,044	242,708	102
August	21,863	24,114	110	260,907	266,822	102

Statistical Methodology

Survey Procedures: Data for turkey hatchery estimates are collected from all known turkey hatcheries. Individual NASS field offices maintain a list of all known turkey hatcheries and use known sources of hatcheries to update their lists. Approximately 40 hatcheries are contacted each month. All known turkey hatcheries hatching 15,000 or more poults annually are mailed a questionnaire as close to the first of the month as possible. Adequate time is given to respond via mail, fax, or electronic data reporting (EDR). Those that do not respond are contacted by phone. Care is exercised to ensure that all hatcheries are accounted for in the estimate.

Estimating Procedures: Sound statistical methodology is employed to derive the estimates from reported data. All data are analyzed for unusual values. Data from each operation are compared to their own past operating profile and to trends from similar operations. Data for missing operations were estimated based on similar operations or historical data. NASS field offices prepare these estimates by using a combination of survey indications and historic trends. Individual State estimates are reviewed by the Agricultural Statistics Board for reasonableness. Individual hatchery data are summed to State, regional, and United States totals. Only United States level estimates are published due to the limited number of hatcheries involved. The Net Poult Placement data include imported poults and exclude exported poults.

Cumulative net poult placements beginning on September 1 and ending on August 31 are shown in the monthly *Turkey Hatchery* report. This time period corresponds with the placements of poults which will reach maturity and be available for slaughter during the calendar year.

States reporting turkey hatcheries are: Arkansas, California, Florida, Idaho, Indiana, Iowa, Massachusetts, Michigan, Minnesota, Missouri, North Carolina, New Mexico, Ohio, Pennsylvania, Texas, Virginia, West Virginia, and Wisconsin.

Revision Policy: Revisions are generally the result of late or corrected data. Revisions to the previous month are published in the monthly *Turkey Hatchery* report, while annual revisions are published in the *Hatchery Production - Annual Summary* report in April.

Reliability: Turkey hatchery estimates are based on a census of all known operating hatcheries and therefore, have no sampling error. However, estimates are subject to errors such as omission, duplication, and mistakes in reporting, recording, and processing the data. While these errors cannot be measured directly, they are minimized through strict quality controls in the data collection process and through a careful review of all reported data for consistency and reasonableness.

To assist in evaluating the reliability of the estimates in this report, the “Root Mean Square Error” is shown for selected items in the following table. The “Root Mean Square Error” is a statistical measure based on past performance and is computed using the differences between first and final estimates. The “Root Mean Square Error” for turkey eggs in incubators on the first day of the month over the past 24 months is 1.6 percent. This means that chances are 2 out of 3 that the final estimate will not be above or below the current estimate of 28.8 million eggs by more than 1.6 percent. Chances are 9 out of 10 that the difference will not exceed 2.7 percent.

Reliability of September Turkey Hatchery Estimates

[Based on data for the past 24 months]

Item	Root mean square error	90 percent confidence level	Difference between first and latest estimate				
			Average	Smallest	Largest	Months	
						Below latest	Above latest
	(percent)	(percent)	(1,000)	(1,000)	(1,000)	(number)	(number)
Eggs in incubators	1.6	2.7	291	6	1,221	16	8
Poults hatched	0.7	1.2	88	0	715	9	14
Net poult placements	1.4	2.4	245	11	760	9	15

Information Contacts

Listed below are the commodity specialists in the Livestock Branch of the National Agricultural Statistics Service to contact for additional information. E-mail inquiries may be sent to nass@nass.usda.gov

Dan Kerestes, Chief, Livestock Branch	(202) 720-3570
Bruce Boess, Head, Poultry and Specialty Commodities Section	(202) 720-4447
Aaron Cosgrove – Egg Products, Poultry Slaughter, Trout Production	(202) 690-3237
Alissa Cowell-Mytar – Cold Storage	(202) 720-4751
Heidi Gleich – Broiler Hatchery, Chicken Hatchery	(202) 720-0585
Tom Kruchten – Census of Aquaculture	(202) 690-4870
Kim Linonis – Layers, Eggs	(202) 690-8632
Sammy Neal – Catfish Production, Mink, Turkey Hatchery, Turkeys Raised	(202) 720-3244
Joshua O’Rear – Honey, Honey Bee Colonies	(202) 690-3676

Access to NASS Reports

For your convenience, you may access NASS reports and products the following ways:

- All reports are available electronically, at no cost, on the NASS web site: www.nass.usda.gov
- Both national and state specific reports are available via a free e-mail subscription. To set-up this free subscription, visit www.nass.usda.gov and click on “National” or “State” in upper right corner above “search” box to create an account and select the reports you would like to receive.

For more information on NASS surveys and reports, call the NASS Agricultural Statistics Hotline at (800) 727-9540, 7:30 a.m. to 4:00 p.m. ET, or e-mail: nass@nass.usda.gov.

The U.S. Department of Agriculture (USDA) prohibits discrimination against its customers, employees, and applicants for employment on the basis of race, color, national origin, age, disability, sex, gender identity, religion, reprisal, and where applicable, political beliefs, marital status, familial or parental status, sexual orientation, or all or part of an individual's income is derived from any public assistance program, or protected genetic information in employment or in any program or activity conducted or funded by the Department. (Not all prohibited bases will apply to all programs and/or employment activities.)

If you wish to file a Civil Rights program complaint of discrimination, complete the [USDA Program Discrimination Complaint Form](#) (PDF), found online at http://www.ascr.usda.gov/complaint_filing_cust.html, or at any USDA office, or call (866) 632-9992 to request the form. You may also write a letter containing all of the information requested in the form. Send your completed complaint form or letter to us by mail at U.S. Department of Agriculture, Director, Office of Adjudication, 1400 Independence Avenue, S.W., Washington, D.C. 20250-9410, by fax (202) 690-7442 or email at program.intake@usda.gov.