



ISSN: 1949-1964

Released December 15, 2016, by the National Agricultural Statistics Service (NASS), Agricultural Statistics Board, United States Department of Agriculture (USDA).

Eggs in Incubators on December 1 Up 7 Percent from Last Year

Turkey eggs in incubators on December 1, 2016, in the United States totaled 27.4 million, up 7 percent from December 1, 2015. Eggs in incubators were down slightly from the November 1, 2016 total of 27.5 million eggs.

Poults Hatched During November Up 10 Percent from Last Year

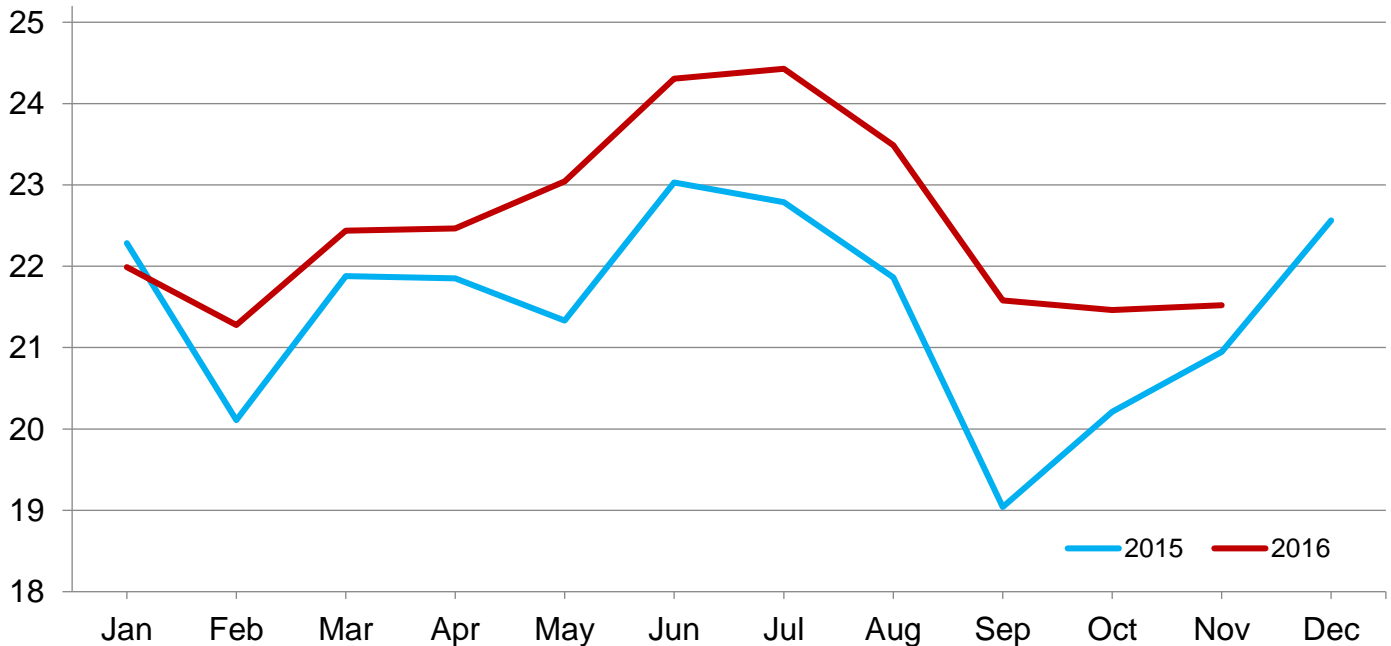
Turkey poults hatched during November 2016, in the United States totaled 23.0 million, up 10 percent from November 2015. Poults hatched were down 3 percent from the October 2016 total of 23.7 million poults.

Net Poults Placed During November Up 3 Percent from Last Year

The 21.5 million net poults placed during November 2016 in the United States were up 3 percent from the number placed during the same month a year earlier. Net placements were up slightly from the October 2016 total of 21.5 million.

Net Poult Placements – United States

Million poults



Eggs in Incubators and Poults Hatched by Month – United States: 2015-2017

[Blank data cells indicate estimation period has not yet begun]

Month	Eggs in incubators first of month		Percent of previous year	Poults hatched entire month		Percent of previous year
	2015-2016	2016-2017		2015-2016	2016-2017	
	(1,000 eggs)	(1,000 eggs)	(percent)	(1,000 poults)	(1,000 poults)	(percent)
September	23,793	28,922	122	19,528	23,645	121
October	24,211	28,409	117	20,621	23,652	115
November	25,125	27,526	110	20,996	22,999	110
December	25,727	27,436	107	22,642		
January	27,473			22,783		
February	27,057			22,016		
March	27,628			23,496		
April	29,443			23,765		
May	28,149			23,513		
June	30,047			25,021		
July	29,899			24,757		
August	29,043			24,232		

Net Poultry Placements by Month – United States: 2015-2017

[Includes imports and excludes exports. Blank data cells indicate estimation period has not yet begun]

Month	Total all breeds		Percent of previous year	Cumulative total		Percent of previous year
	2015-2016	2016-2017		2015-2016	2016-2017	
	(1,000 poults)	(1,000 poults)	(percent)	(1,000 poults)	(1,000 poults)	(percent)
September	19,041	21,581	113	19,041	21,581	113
October	20,213	21,461	106	39,254	43,042	110
November	20,946	21,523	103	60,200	64,565	107
December	22,562			82,762		
January	21,991			104,753		
February	21,278			126,031		
March	22,436			148,467		
April	22,465			170,932		
May	23,042			193,974		
June	24,306			218,280		
July	24,428			242,708		
August	23,489			266,197		

Statistical Methodology

Survey Procedures: Data for turkey hatchery estimates are collected from all known turkey hatcheries. Individual NASS field offices maintain a list of all known turkey hatcheries and use known sources of hatcheries to update their lists. Approximately 40 hatcheries are contacted each month. All known turkey hatcheries hatching 15,000 or more poults annually are mailed a questionnaire as close to the first of the month as possible. Adequate time is given to respond via mail, fax, or electronic data reporting (EDR). Those that do not respond are contacted by phone. Care is exercised to ensure that all hatcheries are accounted for in the estimate.

Estimating Procedures: Sound statistical methodology is employed to derive the estimates from reported data. All data are analyzed for unusual values. Data from each operation are compared to their own past operating profile and to trends from similar operations. Data for missing operations were estimated based on similar operations or historical data. NASS field offices prepare these estimates by using a combination of survey indications and historic trends. Individual State estimates are reviewed by the Agricultural Statistics Board for reasonableness. Individual hatchery data are summed to State, regional, and United States totals. Only United States level estimates are published due to the limited number of hatcheries involved. The Net Poult Placement data include imported poults and exclude exported poults.

Cumulative net poult placements beginning on September 1 and ending on August 31 are shown in the monthly *Turkey Hatchery* report. This time period corresponds with the placements of poults which will reach maturity and be available for slaughter during the calendar year.

States reporting turkey hatcheries are: Arkansas, California, Florida, Idaho, Indiana, Iowa, Massachusetts, Michigan, Minnesota, Missouri, North Carolina, New Mexico, Ohio, Pennsylvania, Texas, Virginia, West Virginia, and Wisconsin.

Revision Policy: Revisions are generally the result of late or corrected data. Revisions to the previous month are published in the monthly *Turkey Hatchery* report, while annual revisions are published in the *Hatchery Production - Annual Summary* report in April.

Reliability: Turkey hatchery estimates are based on a census of all known operating hatcheries and therefore, have no sampling error. However, estimates are subject to errors such as omission, duplication, and mistakes in reporting, recording, and processing the data. While these errors cannot be measured directly, they are minimized through strict quality controls in the data collection process and through a careful review of all reported data for consistency and reasonableness.

To assist in evaluating the reliability of the estimates in this report, the “Root Mean Square Error” is shown for selected items in the following table. The “Root Mean Square Error” is a statistical measure based on past performance and is computed using the differences between first and final estimates. The “Root Mean Square Error” for turkey eggs in incubators on the first day of the month over the past 24 months is 1.6 percent. This means that chances are 2 out of 3 that the final estimate will not be above or below the current estimate of 27.4 million eggs by more than 1.6 percent. Chances are 9 out of 10 that the difference will not exceed 2.7 percent.

Reliability of December Turkey Hatchery Estimates

[Based on data for the past 24 months]

Item	Root mean square error	90 percent confidence level	Difference between first and latest estimate				
			Average	Smallest	Largest	Months	
						Below latest	Above latest
	(percent)	(percent)	(1,000)	(1,000)	(1,000)	(number)	(number)
Eggs in incubators	1.6	2.7	288	6	1,221	15	9
Poults hatched	0.7	1.3	99	0	715	11	12
Net poult placements	1.6	2.7	288	41	760	8	16

Information Contacts

Listed below are the commodity specialists in the Livestock Branch of the National Agricultural Statistics Service to contact for additional information. E-mail inquiries may be sent to nass@nass.usda.gov

Dan Kerestes, Chief, Livestock Branch	(202) 720-3570
Bruce Boess, Head, Poultry and Specialty Commodities Section	(202) 720-4447
Aron Cosgrove – Catfish Production, Egg Products, Poultry Slaughter, Trout Production, Turkey Hatchery, Turkeys Raised	(202) 690-3237
Alissa Cowell-Mytar – Cold Storage	(202) 720-4751
Tom Kruchten – Census of Aquaculture	(202) 690-4870
Kim Linonis – Layers, Eggs	(202) 690-8632
Joshua O’Rear – Honey, Honey Bee Colonies	(202) 690-3676
Miste Salmon – Broiler Hatchery, Chicken Hatchery, Mink	(202) 720-3244

Access to NASS Reports

For your convenience, you may access NASS reports and products the following ways:

- All reports are available electronically, at no cost, on the NASS web site: www.nass.usda.gov
- Both national and state specific reports are available via a free e-mail subscription. To set-up this free subscription, visit www.nass.usda.gov and click on “National” or “State” in upper right corner above “search” box to create an account and select the reports you would like to receive.

For more information on NASS surveys and reports, call the NASS Agricultural Statistics Hotline at (800) 727-9540, 7:30 a.m. to 4:00 p.m. ET, or e-mail: nass@nass.usda.gov.

The U.S. Department of Agriculture (USDA) prohibits discrimination against its customers, employees, and applicants for employment on the basis of race, color, national origin, age, disability, sex, gender identity, religion, reprisal, and where applicable, political beliefs, marital status, familial or parental status, sexual orientation, or all or part of an individual's income is derived from any public assistance program, or protected genetic information in employment or in any program or activity conducted or funded by the Department. (Not all prohibited bases will apply to all programs and/or employment activities.)

If you wish to file a Civil Rights program complaint of discrimination, complete the [USDA Program Discrimination Complaint Form](#) (PDF), found online at http://www.ascr.usda.gov/complaint_filing_cust.html, or at any USDA office, or call (866) 632-9992 to request the form. You may also write a letter containing all of the information requested in the form. Send your completed complaint form or letter to us by mail at U.S. Department of Agriculture, Director, Office of Adjudication, 1400 Independence Avenue, S.W., Washington, D.C. 20250-9410, by fax (202) 690-7442 or email at program.intake@usda.gov.